

INSTRUCTION BOOK,

GIVING FULL INFORMATION FOR USING

The Self-Adjusting Tailor System,



OF

GARMENT CUTTING.



M. O. JONES,

-

Proprietor,

ROCHESTER, N. Y.



INSTRUCTION BOOK,  
GIVING FULL INFORMATION FOR USING  
The Self-Adjusting Tailor System,



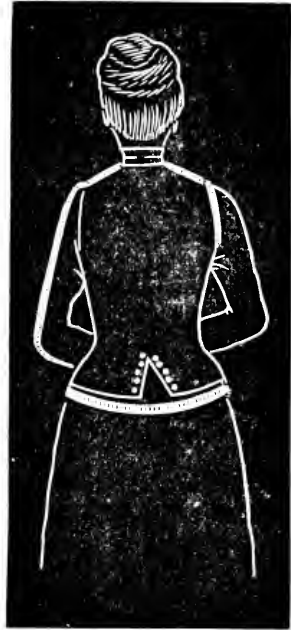
15  
94/6



OF  
GARMENT CUTTING.

M. O. JONES, - Proprietor,  
ROCHESTER, N. Y.

[Copyright.]  
Entered according to act of Congress in the year 1891. March 30th, in the office of the Librarian of Congress at Washington. All rights reserved. Any infringement on this book or any part will be punished to the full extent of the law.



# IMPORTANT.

---

We wish to call attention to a few errors :

On page 5, sec. 14.  $8\frac{3}{8}$  should read  $8\frac{3}{4}$ .

Page 7, 15 inch neck should read 12 inch.

Page 16, sec. 6, last line, left should read right and right should read left.

Page 25, last line, underarm dot should read underarm dart.

Page 30, fourth line, should read, and run outside line 8,  $\frac{1}{2}$  inch.

---





## ❁ Preface. ❁

---

IN this, our fourth issue, we wish to say to our old patrons that we have in this book the most complete instruction book ever issued, giving all the new shapes and most explicit directions for drafting also we have made some changes which makes the work much more simple, and of course an improvement. We wish to call your attention to some of them. We make dot B at the breast measure, leaving out dots  $\frac{1}{4}$  inch each side of K, also making dot L  $1\frac{3}{4}$  inch below dot K, leaving out line 9 and putting whole of space from dot O to line 6 in the two front darts, which simplifies the work very much, and with our new square we feel confident that the self-adjusting is the most complete system of cutting now before the public. It is only a matter of a perfect measure and a correct draft to get a most perfect fitting, easy feeling, and at the same time giving the most elegant figure, and it can be accomplished in less time than with any other system in use.

Now, if all this can be secured by the use of the self-adjusting system, does it not deserve some little attention? Will it not pay you to thoroughly learn the system? Dressmaking is no longer a drudge but an art, and if you wish to be an artist you must keep abreast of your business, with this fact in view, that any business worth doing at all is worth your close, undivided attention in order to make a success.

With our new book any lady of ordinary intelligence can learn the system.

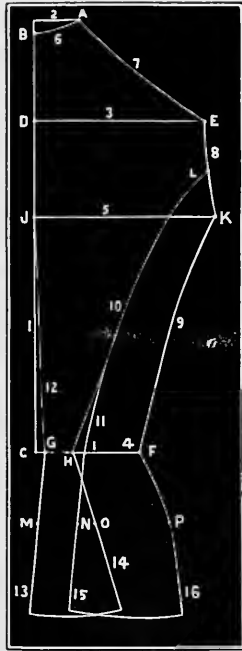


Fig. 1.

BACK OF CLOSE-FITTING BASQUE.

## Measures Used for Trial Lesson.

12 inch Neck.

16 inch Length Back.

6 inch Shoulder.

25 inch Around Waist.

$8\frac{3}{4}$  inch Side Seam.

13 inch Width Back.

SECTION 1. Place square on paper 1 inch from edge, short arm from you and near top of paper.

SEC. 2. Draw line 1 at long arm of square.



SEC. 3. Draw line 2 at short arm of square.

SEC. 4. Make dot A on line 2 at the neck measure, using back neck measure scale on short arm of square 12 inches in this measure.

SEC. 5. Make dot B  $\frac{1}{4}$  inch from corner of square on line 1.

SEC. 6. Make C 16 inches from dot B on line 1.

SEC. 7. Place X corner of square on line 1 and 2, (move the square up so inside of long arm is outside of line 1 and the metal curve on line 2).

SEC. 8. Make dot D at the shoulder measure, on line 1, using back shoulder measure on inside of long arm of square. 6 inches in this measure.

SEC. 9. Place corner of square at dot D, long arm on line 1 and draw line 3 at short arm of square.

SEC. 10. Place corner of square at dot C, short arm on line 1, long arm to your right.

SEC. 11. Make dot F at the waist measure, 25, using back waist measure scale on long arm of square.

SEC. 12. Draw line 4, (the back waist line), from dot C to dot F.

SEC. 13. Make dot G  $\frac{1}{4}$  inch from dot C on line 4, and make dot H  $1\frac{1}{4}$  inches from dot C, and make dot I  $\frac{1}{4}$  inch from dot H. Dot H may be varied according to taste, as it does not change the fit.

SEC. 14. Without moving square make dot J  $8\frac{3}{4}$  inches from dot C on line 1. This is length of side seam. *24*

SEC. 15. Place corner square at dot J, long arm on line 1, and draw line 5 at short arm of square, and make dot K  $6\frac{1}{2}$  inches from dot J. This is one-half width of back measure.

SEC. 16. Draw line 6 from dot A to dot B with curved end of square,

SEC. 17. Place curve end of square on dot A, short arm towards you, and draw a curve line 6 inches long to line 3, use the measure on inside of curved end of square, this is back shoulder, line 7 and dot E.

SEC. 18. Draw line 8 from dot E to dot K with curved end of square, the end  $1\frac{1}{2}$  inch above dot E, short arm toward you.

SEC. 19. Make dot L  $1\frac{1}{2}$  inch above dot K, on line 8, as the location of dot L does not alter the fit, it may be located according to taste.

SEC. 20. Place curve end of square at dot K, inside of long arm at dot F, short arm towards you, and draw line 9 from K to F.

SEC. 21. Place curve end of square at dot L, inside of long arm at dot C, short arm towards you.

SEC. 22. Draw line from dot L to line 5 and stop. Now move end of square down to end of line just drawn, and place inside of long arm at dot H, and finish line 10 from L to H.

SEC. 23. Draw line 11 from dot I, to intersect with line 10  $3\frac{1}{2}$  inches above dot I.

SEC. 24. Draw straight line from dot G to dot J, line 12.

SEC. 25. Place short arm of square on line 1, long arm at your right, move corner of square 3 inches below dot C, short arm still on line 1.

SEC. 26. Make dot M at corner of square. Make dot N as far from M as H is from G at the waist line. And make dot O  $\frac{1}{2}$  inch from dot N. And make dot P 1 inch beyond waist measure, as seen in back waist scale.

SEC. 27. Draw straight line from dot G through dot M six inches. This is line 13.

SEC. 28. Draw line 14 straight from dot H through dot O six inches.

SEC. 29. Draw line 15 straight from dot I through dot N six inches.

SEC. 30. Place curved end of square at dot F, inside of long arm at dot P, short arm from you, and draw line 16 from F through dot P 6 inches. After making draft of back, measure from line 2 to line 5. Also measure line 9 from K to F, and set the measure down on margin of paper for use in making front draft.

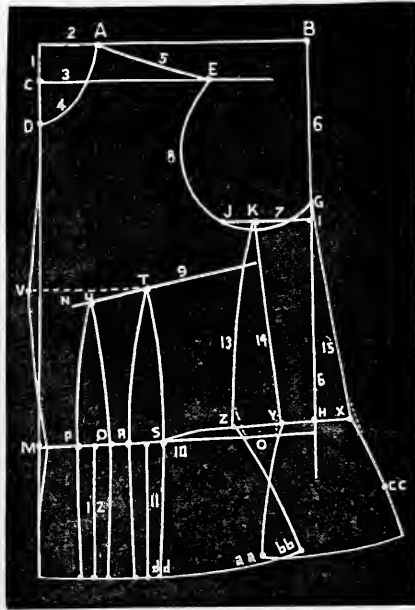


Fig. 2.

FRONT FOR TIGHT-FITTING BASQUE.

37 inch Bust.

19 inch Front.

13 inch Height Dart.

14 inch Arm Eye.

12 15 inch Neck

6 inch Shoulder.

45 inch Hip Measure.

Bust measure . . . . . 37 inches.

Width Back - - - 13 inches.

Subtracted from Bust, leaves —

Breast measure - - - 24 inches.

SECTION 1. Draw line 1 twenty four inches long, one inch from edge of paper.

SEC. 2. Place short arm on line 1, long arm near top of paper, and draw line 2 at long arm; make dot A on line 2 at the neck measure, (12). Use front neck measure on long arm of square.

SEC. 3. Make dot B on line 2 at the breast measure, (24), using breast measure on long arm of square. (The breast measure is obtained by subtracting width of back from bust measure).

SEC. 4. Make dot C on line 1, at the shoulder measure, using front shoulder measure on short arm of square.  $1\frac{3}{4}$  inches from corner of square in this measure.

SEC. 5. Make dot D on line 1, at the neck measure, (12), using height of neck on short arm of square  $3\frac{1}{2}$  inches from corner of square.

SEC. 6. Place corner of square at dot C, short arm on line 1, and draw line 3 at long arm of square 10 inches.

SEC. 7. Draw line 4 from A to D, curve for front neck. Place letter D on point of metal curve at dot D on line 1, upper part of curve at dot A on line 2, long arm towards you.

SEC. 8. Place curve end of square at dot A short arm down, and long arm across line 3; and make dot E on line 3  $5\frac{3}{4}$  inches from dot A, using measures on inside of long arm of square; draw curve line from dot A to dot E. Make front shoulder from  $\frac{1}{4}$  to  $\frac{1}{2}$  inch shorter than back shoulder.

SEC. 9. Place corner of square at dot B, short arm on line 2, long arm down; draw line 6 length of long arm of square.

SEC. 10. Make dot G on line 6 as far from dot B at corner of square as line 5 is below line 2 in the back. Refer to Back Drafting.

SEC. 11. Measure line 9 of back from K to F, and make dot H the same distance below dot G on line 6.

SEC. 12. Measure up from dot H toward dot G, the length of side seam,  $8\frac{3}{4}$  inches; and make dot I near dot G.

SEC. 13. Place corner of square at dot I, long arm on line 6, short arm toward you.

SEC. 14. Make dot J  $3\frac{1}{2}$  inches from dot I, (or one-fourth the arm eye measure whatever it may be), and draw line 7 from I to J.

SEC. 15. Make dot K  $\frac{3}{4}$  of an inch to the right of dot J.

SEC. 16. Place corner of square at dot K, short arm on line 7, and make dot L  $1\frac{3}{4}$  inches below dot K at long arm of square.

SEC. 17. Place letter J on point of metal curve at dot J on line 7, and upper end of curve at dot E, and draw line 8 from E to J; move curve to the right and continue line 8 to dot G about  $\frac{1}{4}$  inch below line 7.

SEC. 18. Place corner of square at dot A on line 2, long arm downward; move corner of square above dot A  $1\frac{1}{2}$  inches, or the length of line 6 back neck line of back draft.

SEC. 19. Move lower end of long arm over on line 1 without moving corner from its place, and make dot M on line 1 at 19 inches, or the length of front whatever it may be.

SEC. 20. Without moving square make dot N at 13 inches at long arm of square for height of dart.

SEC. 21. Draw line 9 from dot N to dot L. This line regulates the height of the darts.

SEC. 22. Place corner of square at dot M, short arm on line 1, and draw front waist line from dot M to line 6; this is line 10.

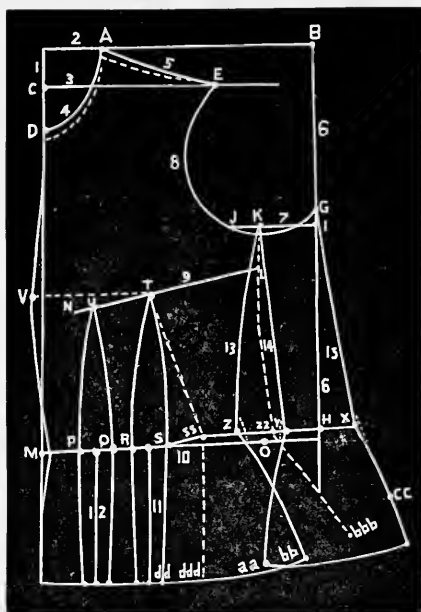


Fig. 3.

12 inch Neck.

19 inch Length Front.

13 inch Height Dart.

$8\frac{3}{4}$  inch Side Seam.

Distance from line 2 to line 5  $7\frac{1}{2}$  inches, length of line 9;  $9\frac{1}{4}$  inches.

SEC. 23. Measure line 4, back waist line, from C to F and take off  $\frac{1}{2}$  inch, it will leave  $3\frac{1}{2}$  inches in this measure; the  $\frac{1}{2}$  inch taken off is the  $\frac{1}{4}$  from C to G, and the  $\frac{1}{4}$  from H to I.

SEC. 24. Place long arm of square on line 10, short arm down.

SEC. 25. Draw the corner of square towards you  $3\frac{1}{2}$  inches outside of dot M, long arm on line 10.

SEC. 26. Make dot O at the waist measure on line 10, using: breast scale on long arm, 25 in this measure.

SEC. 27. The space on square outside of line 1 is what you have in the back, that with the space from dot M to dot O should make one-half of your waist measure,  $12\frac{1}{2}$  inches, if you have done the work correct.

SEC. 28. Measure the space from dot O to line 6. That must be taken up in darts.

SEC. 29. The space from dot O to line 6 is 3 inches; that is taken up in the two front darts  $1\frac{1}{2}$  inches in each dart.

SEC. 30. Place long arm on line 10, corner at dot M, and make dot P  $1\frac{1}{2}$  inches from dot M, and make dot Q  $1\frac{1}{2}$  inches from dot P.

SEC. 31. And make a dot in center between P and Q, make dot R  $\frac{3}{4}$  of an inch from Q.

SEC. 32. Make dot S  $1\frac{1}{2}$  inches from dot R, make a dot in center between R and S.

SEC. 33. Place corner of square at center dot of back dart, short arm on line 10, long arm down.

SEC. 34. And draw a line from center dot, 6 inches at long arm of square. This is line 11.

SEC. 35. Move the corner of square up to line 9, long arm along line 11, and make dot T on line 9 at corner of square.

SEC. 36. Place corner of square at center dot of front dart, short arm on line 10, long arm downward, and draw line 12 6 inches at long arm of square.

SEC. 37. Place long arm on line 1, short arm from you; now move square up until the short arm touching dot T on line 9.

SEC. 38. Draw the corner of square  $\frac{1}{2}$  inch outside line 1, and make dot V from this dot run a straight line up to within  $1\frac{1}{2}$  inch of dot D, on line 1.

SEC. 39. Turn square over, place the figures 18 on the square at dot V, short arm to you, and draw curve line to within 1 inch of dot M.

SEC. 40. Make dot U on line 9, in center between dot V and dot T for point of front dart.

SEC. 41. Place curve end of square at dot U short arm to you, inside of long arm at dot P and draw curved line from U to P.

SEC. 42. Place curved end of square at dot T, short arm to you, inside of long arm at dot R and draw curved line to dot R.

SEC. 43. Turn square over, short arm from you, and draw curved line from dot T to dot S.

SEC. 44. Place curved end of square at dot U, inside long arm at dot Q, short arm from you, and draw curved line from dot U to dot Q.

SEC. 45. Make a dot one-half inch each side of lower end of lines 11 and 12. The dot at the right of lower end of line 11 is dot DD.

SEC. 46. Now draw a straight line from dots P, Q, R, and S, to dots at lower end of lines 11 and 12, for lower end of darts. These lines may be curved in for full forms, or the dots may be made near to lines 11 and 12.

SEC. 47. Place curved end of square at dot S, inside of long arm at dot H, short arm up.

SEC. 48. Draw a curved line from dot S through dot H  $1\frac{1}{2}$  inches outside line 6, and make dot X.

SEC. 49. Make a dot in center between dot S and dot X on line just drawn, and make dot Y  $\frac{3}{4}$  of an inch to the right of dot just made, and make dot Z  $\frac{3}{4}$  of an inch to the left.

SEC. 50. Place curved end of square at dot K, inside of long arm at dot Z, short arm to you, and draw curve line to dot Z, line 13.

SEC. 51. Draw straight line from dot K to dot Y. This is line 14.

SEC. 52. Draw straight line from dot G to dot X, line 15. Always see that the line from G to X is same length as from dot G to dot H. If necessary, draw new waist line from dot Y.

SEC. 53. Place long arm on line 6, short arm from you. Move corner of square down below dot H. 4 inches; make dot cc 3 inches from corner of square at short arm.

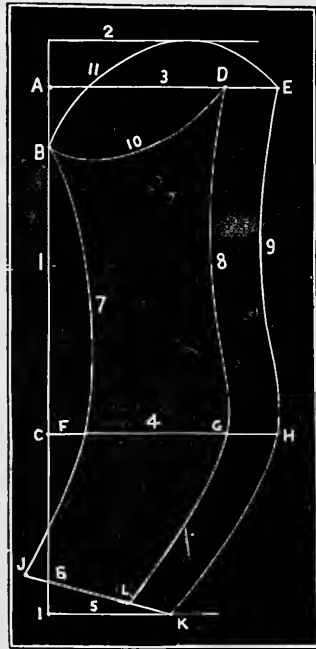
SEC. 54. Place curved end of square at dot X, inside of long arm at dot cc, short arm from you; and draw hip line from X to cc, 6 inches.



SEC. 55. Measure from dot dd to dot cc, and make a dot in center between dots cc and dd, and make dot aa one inch to left, and dots bb 1 inch to the right.

SEC. 56. Place curved end of square at dot Z, inside of long arm at dots bb, short arm from you, and draw line from Z to bb.

SEC. 57. Place curve end of square at dot Y, inside of long arm at dot aa, short arm to you and draw line from dot Y to dots aa. All of the lines may be carried down as long as desired.



COAT SLEEVE.

SEC. 1. Place square on paper one and one-half inch from edge of paper, short arm from you, and near top of paper, and draw line  $1\frac{1}{2}$  inches longer than measure taken for length of arm, and make dot I.

SEC. 2. Draw line 2 from upper end of line 1 at short arm of square, near top of paper. Dots A, B and C are made before moving square.

SEC. 3. Make dot A  $1\frac{1}{2}$  inches from corner of square on line 1.

SEC. 4. Make dot B  $\frac{1}{4}$  of arm eye measure, from corner of square on line 1.  $3\frac{1}{2}$  inches in this measure.

SEC. 5. Make dot C the length to elbow from corner of square. 13 inches in this measure.

SEC. 6. Move corner of square to dot A, long arm on line 1, and draw line 3 at short arm of square.

SEC. 7. Make dot D on line 3  $1\frac{1}{2}$  inches less than half the measure around the arm  $4\frac{1}{2}$  inches in this measure.

SEC. 8. Make dot E  $1\frac{1}{2}$  inches more than half the measure around the arm.  $7\frac{1}{2}$  inches in this measure.

SEC. 9. Place corner of square at dot C, long arm on line 1, and draw line 4 at short arm of square.

SEC. 10. Make dot F  $1\frac{1}{2}$  inches from dot C

SEC. 11. Move corner of square to dot F, and make dot G  $1\frac{1}{2}$  inch less than half of elbow measure from dot F.  $3\frac{1}{2}$  inches in this measure.

SEC. 12. Make dot H  $1\frac{1}{2}$  inches more than half elbow measure from dot F.  $6\frac{1}{2}$  inches in this measure.

SEC. 13. Place corner of square at dot I, long arm on line 1, and draw line 5 at short arm of square.

SEC. 14. Draw square towards you  $\frac{3}{4}$  of an inch, short arm still on line 5, and make dot J  $2\frac{1}{2}$  inches above the corner of square at long arm.

SEC. 15. Place corner of square at dot J, short arm on line 5, and make dot K on line 5,  $1\frac{1}{2}$  inches more than half the cuff measure from dot J.  $5\frac{1}{2}$  inches in this measure.

SEC. 16. Without moving square draw line 6 from dot J to dot K, and make dot L on line 6  $1\frac{1}{2}$  inches less than half the cuff measure from dot J.

SEC. 17. Place curved end of square at dot F inside of square at dot J, short arm from you, and draw line 7 from dot F to dot J.

SEC. 18. Place curved end of square at dot G, inside of long arm at dot L, and draw line 8 from G to L, short arm from you.

Place curved end of square at dot H inside of square at dot K, and draw lower end of line 9 from H to K, short arm from you.

SEC. 19. Draw straight line from dot E to dot H.

SEC. 20. Place curved end of square at dot D inside of long arm at dot G, short arm to you, and draw curved line from dot D to G.

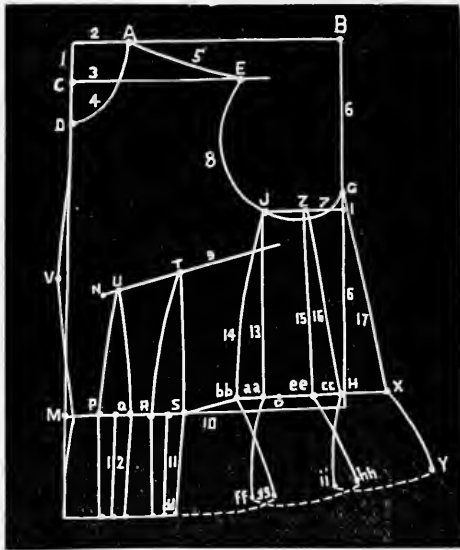
SEC. 21. Place curve end of square at dot F inside of long arm at dot B, short arm from you, draw line from F. to B.

SEC. 22. Make a dot  $\frac{1}{2}$  inch outside of dot B; place curved end of square at this dot, short arm from you and downward, and draw line from dot to join line 7 3 inches from dot outside of B. This line is used for under part of sleeve.

SEC. 23. Place the letter W on inside of short arm of square at dot D on line 3, and mettle curve at dot B, and draw line 10 from dot D through dot B to dot outside of line 1.

SEC. 24. Make dot W on line 2 half the distance from A to E.  $3\frac{3}{4}$  inches in this measure from line 1.

SEC. 25. Place the star on long arm of square over dot W and draw line from dot B to dot W. Move the square to your right so the letter W will be over dot W. Continue line 11 to dot E.



## DOUBLE SIDE BODY.

Make the draft regular. Draft darts. Draw new waist line from dot S through dot H to dot X, draw line from X to dot Y. Dot Y is used where dot cc is in the single side body. Make dot X 2 inches from dot H.

SEC. 3. Place corner of square at dot J, short arm on line 7, long arm downward, and draw line from dot J to the new waist line, and make dot aa, line 13.

SEC. 4. Make dot bb 1 inch to the left of dot aa, and draw curve line 14 from dot J to dot bb, short arm to you.

SEC. 5. Make dot Z in center between dot J and dot I.

SEC. 6. Make a dot in center between dot aa and dot X, and make dot cc  $\frac{1}{2}$  inch to the left, and dot ee  $\frac{1}{2}$  inch to the right.

SEC. 7. Draw straight lines 15 and 16 from Z to dot C C and E E.

SEC. 8. Measure from dots dd to dot Y, and make a dot  $\frac{1}{3}$  of the distance, from dots dd, and make dot ff  $\frac{1}{4}$  inch to the left, and dot gg  $\frac{3}{4}$  inch to the right.

SEC. 9. Measure from center dot between ff and gg to dot Y, and make a dot in center, and make dot hh  $\frac{1}{2}$  inch to the right and dot ii  $\frac{1}{2}$  inch to the left.

SEC. 10. Place curved end of square at dot B B and continue line 14 to dot G G, short arm from you.

SEC. 11. Place curved end end of square at dot A A, short arm to you, and continue line 13 to dot F F.

SEC. 12. Place curved end of square at dot E E, short arm from you, and continue line 15 to dot H H.

SEC. 13. Place curved end of square at dot C C, short arm to you, and continue line 16 to dot I I.

SEC. 1. For cutting bias dart, make a regular draft complete, make dot S S  $1\frac{1}{2}$  inches from dot S, make dot D D D  $1\frac{1}{2}$  inches to the right of D D.

SEC. 2. Draw straight line from dot T to dot S S, and from dot S S to dot D D D. Trace this line.

SEC. 3. Make Z Z  $1\frac{1}{2}$  inches from dot Z, make dot B B B  $1\frac{1}{2}$  inches to the right of dot B B, then draw curve same as dotted line from K through Z Z to B B B. Trace this line instead line 13.

---

## Instructions for Taking Measures.

---

**Take Neck Measure:** Tight inside of collar. This measure regulates size of dress at back. If you have a looseness at back and shoulder, you have taken the neck measure to large.

**Length of Back:** Place a line on bone at back of neck and take down as long as dress could be worn.

**Shoulder Measure:** Place line close up to neck with your thumb on end of line, the hand around the neck and measure to point of shoulder about one-inch longer than the dress should be when finished.

**Waist Measure:** Very tight around small part of waist.

**Width of Back:** Across the fullest part of back from side seam to side seam.

**Bust Measure:** Over fullest part of bust raised slightly in the back. A close measure, draw line close under the arm.

**Side Seam:** Place thumb on line close up under the arm the hand on right shoulder forming square of hand and thumb, and measure down to hip bone, the line a little back of straight down.

**Front Measure:** From bone in back of neck over right shoulder to waist line in front. Care should be used in taking this measure. Put a pin at the length of front, while the line is in position notice height of dart. It should be just below fullest part of bust.

**Arm Eye:** Around arm over point of shoulder; a close measure.

**Hip Measure:** Loose measure over largest part of hip.

**Length of Arm:** Arm raised bent in form of square. Measure from center of back around elbow to bone of wrist. Subtract width of back from whole measure and you have correct measure. Measure back draft from center to about where dot L is made.

**Length from Shoulder to Elbow:** Place end of line as for taking shoulder measure, and run line over point of shoulder to point of elbow. Subtract length of shoulder from whole measure.

**Around Arm Measure:** Place line close to body and measure straight around arm as you wish sleeve.

**Around Elbow:** Place line around arm over point of elbow with arm bent close.

**Cuff:** Measure around hand close.

**Test Breast:** Measure across breast about two inches below neck as wide as you wish the dress.

**Ballance:** Measure up from pin at length of front to length desired at neck.

The hip, test breast and ballance measures are test measures.

**After Draft is made:** Measure the draft about four inches below waist, from line 13 to 14 and 15 to 16 in back. Also the distance from line 1 to dots BB, and from dots AA to dots CC, leaving out

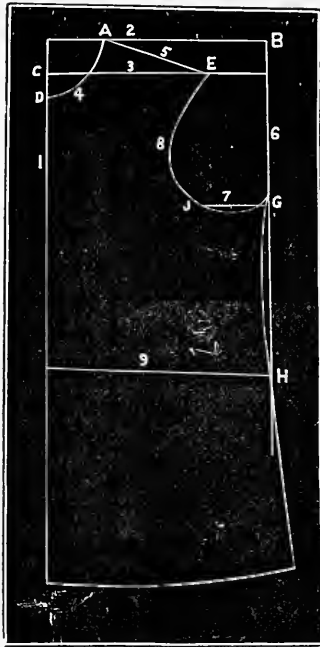
the lower end of darts. That should make one half of hip measure, if not some of the lines must be moved to make hip measure, and you must use your judgment; if large hip give more opening at hip if full front, take up less at lower part of darts by making dots near lines 11 and 12.

For Test Breast: Measure from line 1 to line 8, and it should be one-half of test breast measure; if not make line 8 from E to J a little straighter.

Balance Measure: Measure up from dot M, on line 1, towards dot D, and make a new dot. If there is a difference draw a new line 4, and lower the shoulder line the same distance below dot A.







FRONT FOR CHILD.

SEC. 1. Get lines from 1 to 8 same as Fig. 2, for large size, place corner of square at dot H, short arm on line 6, and draw line 9, front waist line, from H to line 1.

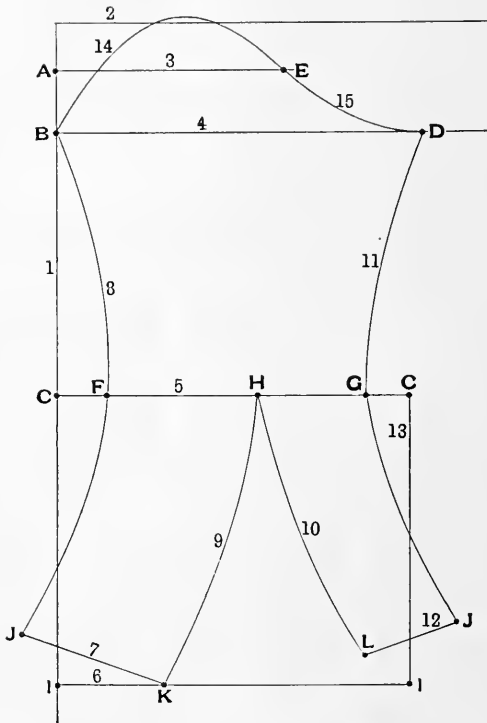
SEC. 2. Place curved end of square at dot G, inside of long arm at dot H, short arm to you, and draw curved line from G to H.

SEC. 3. Place curved end of square on line just drawn, the end 5 inches above dot H, and extend line just drawn at inside of square as long as desired.

SEC. 4. If there is any taper to the form a small under arm dart may be used, running to a point at armsay, and to a point about 4 inches below the waist, curving the lines in.

SEC. 5. Draft sleeve same as for large size, except a little straighter, by making dot F 1 inch from dot C, and make dot J  $\frac{1}{2}$  inch outside line 1, and make less difference between upper and under part of sleeve. If you have the dress open in the back allow for lap outside line 1, and line 1 of front should be placed on fold  
 seeds to trace.

FIG 7.



## SEAMLESS FROM ELBOW TO SHOULDER.

SECTION 1. For drafting this sleeve lines 1, 2, 3, 5 and 6 are made as in Fig. 4, page 10.

SEC. 2. Dots A, B, C, E, F, J and K are made same as Fig. 4, page 10. Place corner of square at dot A, long arm on line 1 and draw line 3. Make dot E 1 inch more than half measure around arm.

SEC. 3. Place corner of square at dot B, short arm on line 1 and draw draw line 4 and make dot D, the measure around the arm from dot B.

SEC. 4. Place corner of square at dot C, short arm on line 1 and draw line 5 and make dot F,  $1\frac{1}{2}$  inches from dot C.

SEC. 5. Move the corner of square to dot F and make dot H 1 inch more than half the measure around elbow, and make dot G, the elbow measure from dot F.

SEC. 6. Make line 1  $1\frac{1}{2}$  inches longer than length of arm and make dot I. Place corner of square at dot I short arm on line 1 and draw line 6 at long arm of square.

SEC. 7. Draw corner of square toward you  $\frac{3}{4}$  inch, keeping long arm on line 6 and make dot J  $2\frac{1}{2}$  inches above corner of square on short arm.

SEC. 8. Place corner of square at dot J, long arm across line 6, and make dot K 1 inch more than half cuff measure from dot J and draw line 7 from J to K.

SEC. 9. Place curved end of square at dot F, short arm from you, and inside of square at dot B, and draw line 8 from F to B.

SEC. 10. Place curved end at dot F, short arm from you and inside at dot J, and continue line 8 from dot F to dot J.

SEC. 11. Place curved end of square at dot H, short arm from you and inside of long arm at dot K, and draw line 9 from H to K.

SEC. 12. Extend line 5  $1\frac{1}{2}$  inches outside of dot G and make dot C, place corner of square at dot C short arm on line 5 and draw line 13 at long arm to line 6 and make dot I.

SEC. 13. Place corner of square at dot I just made, short arm on line 13, now draw corner of square  $\frac{3}{4}$  inch outside line 13 and make dot J,  $2\frac{1}{2}$  inches above corner of square on short arm.

SEC. 14. Place corner of square at dot J, long arm across line 6 and make dot K 1 inch more than half the cuff measure from dot J. Without moving square make dot L 1 inch less than half the cuff measure from dot J and draw line 12 from dot L to dot J.

SEC. 15. Place curved end of square at dot H, short arm to you and inside of long arm at dot L and draw line 10 from H to L.

SEC. 16. Place curved end of square at dot G, short arm toward you and inside of long arm at dot J, and draw line 11 from G to J. Place curved end of square at dot G, short arm toward you, and inside of long arm at dot D and continue line 11 from G to D. Lines 14 and 15 are drawn same as lines 11 and 12 in Fig. 6, or one seam sleeve.

SEC. 17. To cut a bell or tea gown sleeve, you run lines 8 and 9, Fig. 4, straight down from elbow as long as desired.

SEC. 18. To cut a bell sleeve with only one seam leave space between lines 9 and 10 uncut. See Fig. 7. Fold under par) to its place and trim cuff to suit.

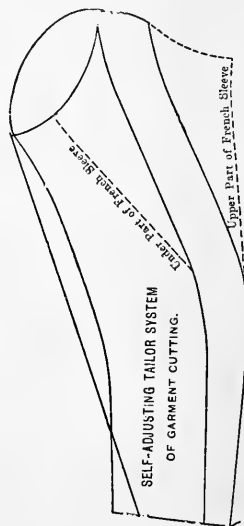
## Leg O'utton Sleeve.

SECTION 1. Make the close fitting draft. Place long arm of square on line 1, the corner  $\frac{1}{2}$  inch below dot B, short arm to you, make a dot 2 inches outside of line 1, at the short arm of square.

SEC. 2. Place curved end of square at dot F, inside of long arm, at dot just made, and draw another line 7, this will be used for the inside of upper.

SEC. 3. Make a dot 3 inches outside of dot E, and run straight line from dot H to dot just made, run a line from this dot to the dot 2 inches outside of line 1, and from 4 to 5 inches above line 2, this would be line 11.

FIG. 5.



FRENCH SLEEVE.

Draw the regular coat sleeve complete, place corner of square at dot B, short arm on line 1, and draw a line 12 inches at long arm

of square, measure from line 8 toward dot B, 3 inches and make a dot, and run a straight line from dot just made to dot G, this line to be used for back line of under part of sleeve.

Measure out from line 9 3 inches and make a dot, and run line from this dot to dot H, for outside for upper part of sleeve.

Run curved line from dot E to dot outside of line 9 in same way as line 10 is drawn. This may be varied by taking off from under part more or less than 3 inches, and adding outside of line 9 as much as taken off from under part.

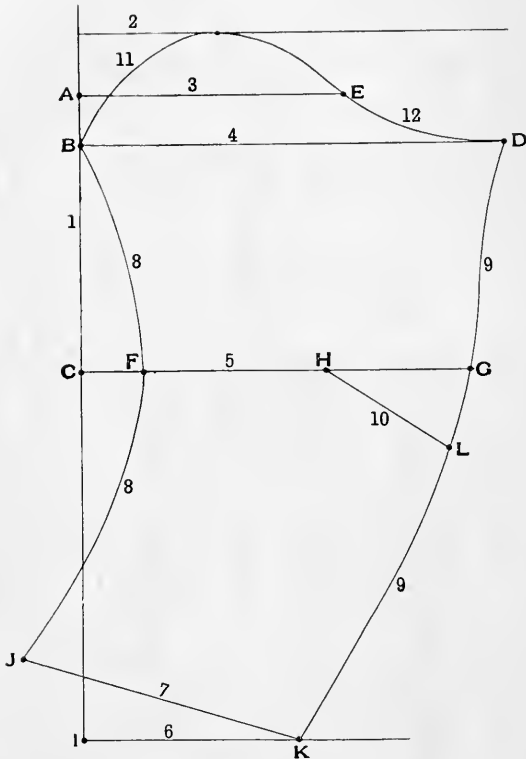
---

## To Draft on Cloth,

---

1. To draft on cloth for back draw lines 1, 2, 3, 4, 5, 6, 7, 8, 10 and 12, make dot G and H, also dot M, N and O; then trace and cut out, allowing seams, except arm, eye and neck.
2. Place the back on the goods in shape to use line 10 to make the side body curve with, pin fast to the cloth.
3. Then place the corner of square at dot C as before, short arm on line 1 and make dot F at waist measure; make dot I  $\frac{1}{4}$  inch from dot H, press hard with point of pencil to make impression through the lining.
4. Make dot N and P the regular way; place corner of square at dot J and get dot K.
5. Trace waist line; trace line 9 also from dot K to dot L, trace line 10 on the tracing of back commencing about  $3\frac{1}{2}$  inches above the waist line, trace from F through P.
6. With the tracer make a mark at dot N, then take the back off and trace from dot N through dot I to connect with line 10, cut out as usual.
7. In the front make dot B 2 inches beyond the breast measure; line 9 would be 2 inches to the right of dot K.
8. Make a dot in center between dots S and X, and make dot Z and Y 2 inches each side of center.
9. Make a dot in center between dd and cc, and run curve line from dot Z and Y to the dot just made, running the lower end of under arm dot to a point below the waist, trace and cut as usual.

FIG. 6.



SLEEVE WITH ONE SEAM.

SECTION 1. You draw lines 1, 2 and 3, same as Fig. 4.

SEC. 2. Make dots A, B and C the same as Fig. 4.

SEC. 3. Place corner of square at dot A, long arm on line 1, and draw line 3, at short arm, and make dot E 1 inch more than half the measure around the arm.

SEC. 4. Place the corner of square at dot B and short arm on line 1 and draw line 4 at long arm, across the paper.

SEC. 5. Make dot D as far from dot B as the measure around the arm, (12 inches in this measure.)

SEC. 6. Place corner of square at C, short arm on line 1 and draw line 5 at long arm across the paper.

SEC. 7. Make dot F  $1\frac{1}{2}$  inches from dot C on line 5, move corner square to dot F.

SEC. 8. Make dot H 1 inch more than half the elbow measure from dot F and make dot G, the elbow measure from dot F, or ten inches in this measure.

SEC. 9. Make line 1  $2\frac{1}{2}$  inches longer than the length of arm and make dot I.

SEC. 10. Place corner of square at dot I, short arm on line 1 and draw line 6 10 inches at long arm.

SEC. 11. Draw square toward you 1 inch, long arm on line 6 and make dot J  $2\frac{1}{2}$  inches above corner of square on short arm.

SEC. 12. Place corner of square at dot J, long arm across line 6 and make dot K, the full cuff measure from dot J. 8 inches in this measure.

SEC. 13. Place curved end of square at dot F, short arm from you, and draw line from dot F to dot B.

SEC. 14. Place curved end of square at dot F and inside of square at dot J, short arm from you, and continue line 8 to dot J.

SEC. 15. Place curved end at dot G, short arm from you, and inside at dot K and draw line from G to K, draw straight line from dot D to dot G.

SEC. 16. Draw lines 11 and 12 same as lines 10 and 11 in Fig. 4.

SEC. 17. Measure line from F to J and measure the same distance from dot K on line 9 and make dot L.

SEC. 18. Draw line 10 from L to H. The space from L to G is taken up in a dart, not gathered.

## Rules for Basting.

Place waist lines together and bast up from waist line and down from waist, bast from point of darts downward, stretch front shoulder to back, bast close and carefully if you wish the best results. Should the front come out longer than side body at arm hole, trim off upward about  $2\frac{1}{2}$  inches. The farther dot H is above line 10 the more you will have to trim off.

---

## Instructions for Cutting Princess.

After cutting the lining lay goods on cutting table and lay out as long as required, lay the front on the outside and measure down from the waist line the length required, and make the front 26 inch wide at bottom, and run a line from hip line to the 26 inch dot. The back is cut in same way. Carry lines 13 and 14 to the required length and make bottom 12 inches wide, bottom of side body should be about 17 inches.

---

## SKIRT CUTTING.

Take for trial measure 25 inch waist, first decide what you wish to have in the back, say in this case, we put 5 inches in the back, that is after it is pleated or gathered ready for the band, leaves 20 inches for front and side body, 10 inches folded would be 5 inches, to this must be added according to the form from 1 to 2 inches for darts, in this case we will add  $1\frac{1}{2}$  inches to the 5, will be  $6\frac{1}{2}$  inches, make dot A at  $6\frac{1}{2}$  inches at short arm of square, make dot B  $\frac{1}{2}$  inch below the corner of square on line 1, place curved end at dot A, inside of long arm at dot B, short arm down, and draw curved line from dot A to dot B.

Make dot C in center between dot A and B and make dot D  $\frac{3}{4}$  inch to right, and dot E  $\frac{3}{4}$  inch to the left of C, all on the curved line.

Place corner of square at dot C, short arm on curved line, long arm down, and draw a line 4 inches at long arm of square.



Draw curved line from dot D and E to lower end of line just drawn for the dart, then measure down on the fold the length of skirt in front from dot B, and place corner of square at the length, short arm on the fold, and make the bottom 11 inches at long arm of arm of square, make a dot  $\frac{1}{4}$  inch above dot just made, and draw straight line to this dot.

Make the side body just the same, except at the bottom, make the bottom 14 inches wide. The back is straight goods.

In drafting back, if size of waist is very large, it may be drafted at less than the waist measure, for instance, suppose your measure is 33, you may make dot F at 31, it would make line 4  $\frac{1}{2}$  inch shorter, and make dot O at waist measure (33) it makes the back narrower, and add the same to front.

And again, you can make dot H at any distance you wish from dot G, as it does not alter the fit of dress, dot L may be made wherever you choose on line 8, as the location of line 10 does not affect the fit of waist. And should you wish to run seam to center of shoulder, make dot L in center of shoulder, and run either a curved or straight line to dot L, from dot H. Make dot I and line 11 the same.

Another point we wish to call especial attention to. Should dot J for length of side seam be more or less than  $\frac{1}{4}$  of arm eye measure, from dot D, it should be just  $\frac{1}{4}$  of arm eye measure from dot D, regardless of the measure you have taken, and make the change on your measure book if dot J is more than  $\frac{1}{4}$  arm eye measure from dot D, the distance from line 2 to line 5 gives too much back arm shape, also makes dot G too far from dot B in the front, and the dress would be too large under the arm, it would have to be taken up on the shoulder and cut out at front neck.

On the other hand should dot J of back be too near dot D, then it would affect the front by making the dress tight on shoulder, and under the arm, making it necessary to cut out under the arm. This is always. Supposing you have taken length of shoulder and length of back correct.

In round shoulder shapes dot L should be made a little higher up on line 8, say  $\frac{1}{4}$  inch, and make a dot  $\frac{1}{2}$  inch below it on line 8, draw line 10 to dot L, then draw a line from about  $4\frac{1}{2}$  inches on line 10 to the other dot, and run outside line 8  $\frac{1}{2}$  inch, draw the line from the end of line outside of line 8 to dot K and use this line for back arm shape when tracing side body. In front the location of dot P may be varied. We think that  $1\frac{1}{2}$  inches is about right for medium size waist. For very large it may and should be a little farther, and if very slender it may be less. Also the space from dot Q to dot R may be varied to suit taste.

Also dot L may be lowered if a very low height of dart measure has been taken, as the point of back dart should not be over  $\frac{1}{2}$  inch higher than point of front dart.

You will notice dotted lines at dot X, also at under arm darts at waist line, if you use those lines in tracing it will give what is called cloak curves, and will add 1 inch to the size of the waist, so you must make dot O 1 inch less than waist measure. The curve can be made with tracer. Be careful not allow too much or the waist will be too loose.

For outside garment measure, use same as for close fitting, for light goods. For heavy goods add 1 inch to neck, arm eye, bust and waist measure, if for close fitting at the waist, as a rule, only 1 dart is used. Place dart in center between where dot Q and R would be if two darts were used.

If the space for darts is large, from  $\frac{1}{8}$  to  $\frac{1}{4}$  inch may be taken off at dot M, that would leave that amount less for darts for the rest of draft. Make it regular. If space is taken off at dot M run a line with curved end of square to connect with curve line of curve front then place curved end at the dot at waist line and draw a line to connect with line 1  $1\frac{1}{2}$  or two inches below dot M.

36 sleeve cutting may be varied to suit taste. With narrow or wide under part, 1 inch less and 1 inch more is a regular coat sleeve,  $1\frac{1}{2}$  inch less and more make a good proportion, however, it may be. Two inches less and 2 inches more, which will make 4 inches difference between upper and under part. You may make  $1\frac{1}{2}$  inches

less and more at line 3, 1 inch difference at elbow, and make under and upper the same at the cuff, this would be nice for a jacket.

Should the style change, requiring a straight sleeve, make dot F 1 inch from dot C, and make dot J  $\frac{3}{4}$  or  $\frac{1}{2}$  inch outside of line 1 or even on line 1.

---

## FRENCH BACK

is drafted same as Fig. 1, except lines 10, 11, 14 and 15 are left out. Dot G is  $\frac{1}{2}$  inch from dot C. M is made  $\frac{1}{2}$  inch outside of 1, and dot P is two inches beyond waist measure.

---

### Retail + Price + List.

1 System, with instructions.....	\$20 00
1 System, without instructions.....	10 00
1 Instruction Book,.....	2 00
1 Measure Book:.....	1 00

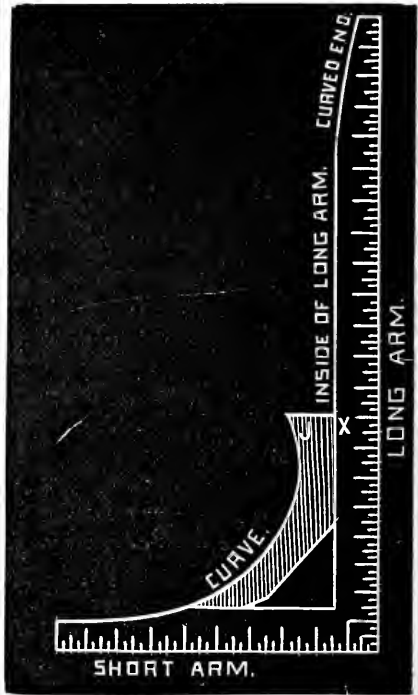
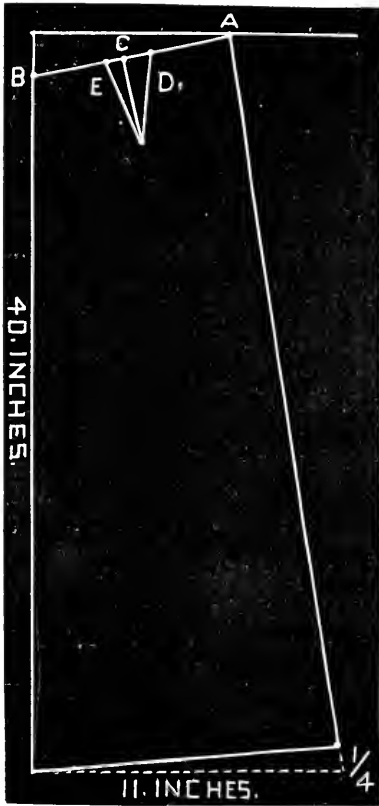
Square, Measure Book and Instruction Book constitute a system.

### A DISCOUNT TO DRESSMAKERS AND AGENTS.

Either lady or gentleman agent wanted in every city in the United States to open cutting schools. A good paying business can be worked up, making it the most pleasant and paying business for the capital invested.

For particulars address

M. O. JONES,  
Rochester, N. Y.



We wish to call the attention of dressmakers to the O. K. Press Board, indispensable to dressmakers. We are also agents for the Hall Bazar Skirt Form, and the Self-Adjusting Flat Holder, something that every milliner ought to have in her shop. We also keep on hand a full line of Tracers and Tape Lines.



LIBRARY OF CONGRESS



0 013 973 032 A ●