

A SYSTEM
—FOR—
CUTTING

LADIES' GARMENTS.

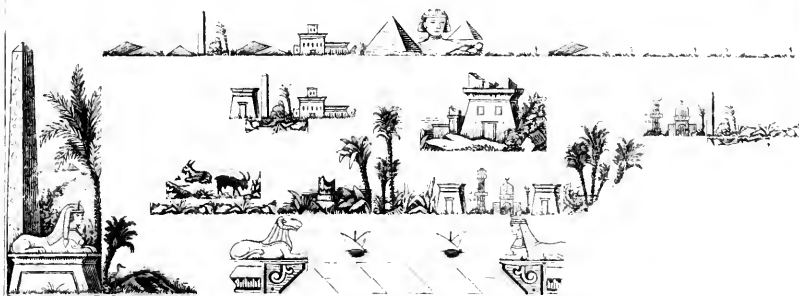
(INVENTED BY MRS. H. A. LEAKE,)

A Complete and Reliable Guide for Dress Makers

INSTRUCTIONS FOR ITS USE

INVENTIONS FOR SAVING LABOR SHOULD BE TESTED BEFORE
THEY ARE EITHER ACCEPTED OR REJECTED.

A COPYRIGHT FOR THE ABOVE IS CLAIMED BY MRS. H. A. LEAKE, RESIDING IN THE
CITY OF OAKLAND, STATE OF CALIFORNIA.





A SYSTEM

—FOR—

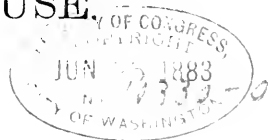
CUTTING

LADIES' GARMENTS:

(INVENTED BY MRS. H. A. LEAKE,)

A Complete and Reliable Guide for Dress Makers.

INSTRUCTIONS FOR ITS USE.



INVENTIONS FOR SAVING LABOR SHOULD BE TESTED BEFORE THEY
ARE EITHER ACCEPTED OR REJECTED.

A COPYRIGHT FOR THE ABOVE IS CLAIMED BY MRS. H. A. LEAKE, RESIDING IN THE
CITY OF OAKLAND, STATE OF CALIFORNIA.

Entered according to Act of Congress in the year 1883, by Mrs. H. A. LEAKE, in
the office of the Librarian of Congress at Washington.

N. B.—The penalties prescribed by law will be rigidly enforced against any person who infringes upon these instructions, or the system to which they relate.

INTRODUCTION.

THE System for Dress Fitting invented by Mrs. Leake in 1865, and improved in 1874, fully met the demands of the styles of garments worn at those dates, and was pronounced by all competent and unprejudiced persons to be the best Dress-fitting System in use.

In consequence of the changes that have since been made in the styles of dresses, the inventor has decided to further improve the System and adapt it to the modern style of ladies' garments. She not only is acquainted with all the principal systems, models and charts for dress fitting in use in the United States, but has a practical knowledge of dressmaking, and professes to be able to teach the art in any and all of its branches; and she ventures to assert that HER System, as now arranged, is more correct and reliable than any other in use. The principle upon which it is founded is that of an inch rule, and scales carefully and accurately arranged, and while the principle is the same as that adopted by tailors in fitting coats, it gives correct forms and curvatures, without which much time and labor would be required in fitting.

Some Dress-fitting Systems are learned with great difficulty, and the most expert cannot fit with them more than three or four Dresses in a day. It is clear that any System which requires much time, study and patience in its use, is of but little value to the often perplexed and harrassed dressmaker.

This System can be easily learned and waists can be drafted by it with ease and facility, and it will be found by actual test that such waists will fit perfectly in every case without any alteration from the original drawing. The System is both convenient to use and durable in quality,

and it embraces much more than any thing of the kind ever before offered to the public. With it a lady can fit dresses for herself as well as for others, and to dressmakers it will save a vast amount of time and labor. Figures or drawings of some of the garments that can be fitted with it are given. These figures have been drawn with a small photograph copy of the System, and it will be seen that if the drafts are made according to the directions given they will correspond exactly with the shape of the figures. The System is the result of much study and many careful tests. The more it is tested and criticised the better the inventor will be pleased, and a comparison of fitting by it and that of any other that can be produced, either by inventors or agents, is respectfully challenged by her.

Opportunities to examine and test her System and compare it with others will be cheerfully afforded, for the inventor is confident that such tests and comparisons will secure its adoption by all who understand what Dress Fitting should be and by all who desire to become first-class Fitters.

The following instructions are the result of much study and experience and many careful tests with the system, and they will be found correct. With a correct measurement of the person to be fitted, a mistake can not occur if the directions are followed specifically. Many styles and figures other than those given might be added, for, with this system, any of the garments that may be selected from either the French or New York fashion plates can be easily and accurately drafted. They are not added, because it is believed that any lady can easily learn to thus adapt the system, after obtaining a full and practical knowledge of the directions and of the methods of drafting which are given.

Communications should be addressed to

Mrs. H. A. LEAKE,

Oakland, Cal., or

Albany, N. Y.

INSTRUCTIONS
FOR
DRAFTING AND FITTING DRESSES, ETC.

It will be observed that this System gives the straight shoulder, with the exception of a slight curve at the neck, which is in accordance with the French style, and that adopted by tailors in fitting coats and all first-class Dress Fitters. This shape of shoulder will fit any form for which it is drafted.

Waist Linings.

A dress will fit better, wear longer, and have less wrinkles, by having a good firm lining. One and one-half yards of one yard wide lining is sufficient for a basque ten inches long below the waist line.

Before commencing to draft, take both ends of the lining and place them even together at the left on the table, so that both fronts may be cut out together. Draft the front first.

It is of the utmost importance that care should be exercised in taking the measures to get them correct and according to the rules given.

Directions for Taking Measures.

Place the belt around the waist and be sure it does not slope down at the front or back.

Measure half the size of neck by placing figure 1 on tape at the edge of lap in front, and as high as the dress is desired, before the bund is on, and measure to middle of back of neck.

Measure from neck in front to bottom of belt for length of front.

Measure from close under arm straight to bottom of belt for length under arm.

Measure from neck to arm size on shoulder seam for length of shoulder.

Measure half the width of chest by placing figure 1 on tape 3 inches down from neck in front straight to arm size.

Measure around arm at shoulder as tight as the arm size is desired to be worn.

Measure as tight around the bottom of waist as the dress is desired to be worn.

Measure from prominent bone in neck to bottom of belt for length of back. Draft the width of back one-half inch less than the width of chest. If the width of chest is eight inches, the back should be seven and one-half inches.

Measure for height of shoulder. To do this have the lady place both hands on the hips, three inches below the belt, and place the end of tape at the bottom of the belt $2\frac{1}{2}$ inches from straight under arm; bring tape over the point of shoulder at arm size seam down to bottom of belt in front 3 inches from first end of tape. If the number of inches is 28, dot $15\frac{1}{2}$ inches for height of front shoulder and $12\frac{1}{2}$ inches for height of back shoulder. When a lady has a slight figure with thin shoulders make the height of front 2 inches longer than the back, which will bring the shoulder seam at arm size in proper position for such a figure. In no case should the height of front be more than three inches longer than the back.

A test measure of the bust is obtained as follows:

Be sure the lady has the same amount of padding she desires to wear when the dress is fitted. Measure around the fullest part of the bust and over the shoulder blades as loose as the dress is desired when done.

In learning to draft use the following measures:

1.	Size of neck.....	7 inches.
2.	Length of front.....	14 “
3.	Length of under arm	8 “
4.	Height of front shoulder.....	$15\frac{1}{2}$ “
5.	Length of front shoulder....	6 “
6.	Width of chest.....	8 “
7.	Arm size	16 “
8.	Waist size.....	24 “
9.	Length of back	16 “
10.	Height of back shoulder.	$12\frac{1}{2}$ “
11.	Length of back shoulder.....	$6\frac{1}{2}$ “

Directions for Drafting Front for a Tight-fitting Basque with one Dart and one-side Body.

[See figure 1.]

Draw a straight line $1\frac{1}{2}$ inches from edge of cloth for lap; place square end of rule on the line $\frac{1}{2}$ an inch down from top of cloth with the point from you and dot at neck size (7); place A on neck rule at that dot with 7 on lower part of neck rule against the line for lap, and draw a line for neck; place square end of rule at lower part of neck in front with point of rule straight down and dot at 14 inches for length of front; place square end of rule at the length of front dot, with the point up and the edge of rule even on lap line, and dot at 15 inches for height of shoulder; place square end of rule at

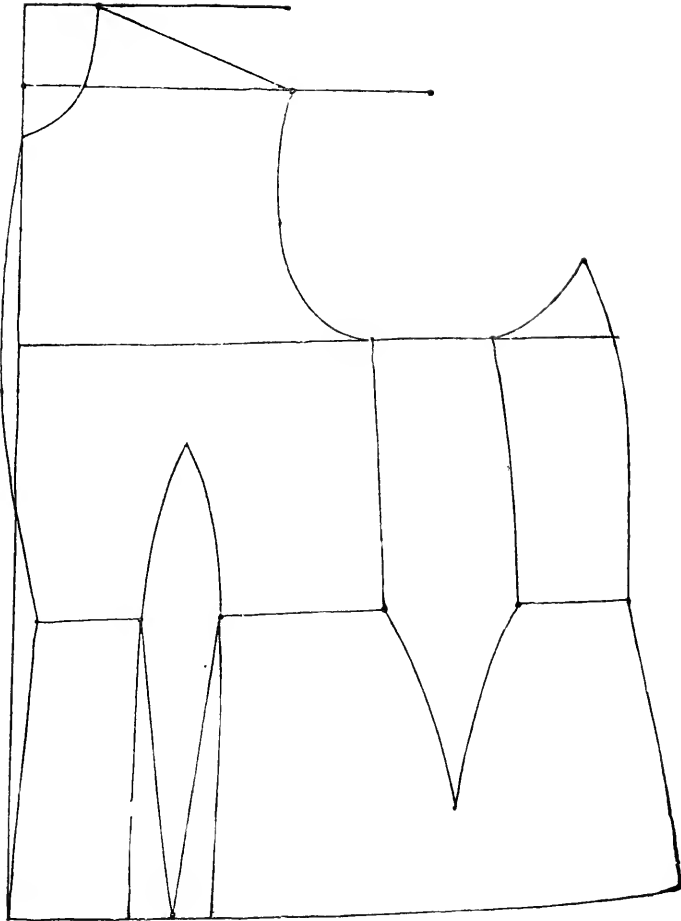


Figure No. 1.

that dot even on lap line, with the point from you, and draw a line out 14 inches; this line is for height of shoulder. Now, place 21 on point of rule at the upper part of neck with edge of rule at height of shoulder line, and draw a line 6 inches from neck in front; place square end of rule at that dot and even on lap line, with the point from you, and dot 8 inches for width of chest; place 8 on arm size at length of shoulder dot, with the edge at width of chest dot, and draw a line from shoulder to A on arm size; place square end of rule at that dot with the point straight down and dot at 8 inches for length under arm; place square end of rule at the length of front dot, with the edge at length under arm dot, and draw a line from dot to dot for waist line before moving the rule; dot

one inch from lap line in front; (this inch must be taken off when only one dart is desired;) dot $2\frac{1}{2}$ inches from the one inch in front, which will be the distance from front to dart; place rule straight across from under arm size with the square end even on lap line in front and draw a line on upper part of rule four inches beyond dot on arm size; (this line is for the purpose of applying the test measure after the waist is drafted), and dot at A on square end of rule; drop end of rule to dot, keeping the edge at arm size and dot four and one-half inches on lower part of rule for height of dart; place point of rule at that dot with the edge at the two and one-half inch dot on waist line, and draw dart the width of rule, unless the lady has a large bust, in which case make the dart two and one-half inches wide on the waist line; dot four inches out from dart on waist line; place 21 on rule at that dot with point of rule down and the edge at arm size, and draw a line inside of rule for seam under arm. Now measure the distance from the end of test measure in front to the four inch dot beyond the arm size; then dot two inches less than that distance on height of shoulder line from lap line on front where one side body is desired; place A on arm size to the four inch dot beyond arm size with the edge of back form rule at the dot on height of shoulder line, and draw a line to point on arm size for side body; place square end of rule to dot on front of side body and get length of under arm as before (eight inches); extend waist line and dot four inches out from first line under arm on waist line; place 21 on rule to that dot with point of rule down, and the edge at first dot on side body, and draw a line from dot to dot on outside of rule. This will make the same curved line as on the front; dot three and one-half inches out on waist line from seam under arm for width of side body; place point of rule at point on arm size with the edge of rule inside of dot on waist line; and draw a line from point of rule to waist line on outside of rule; place the edge of rule at the bottom of side body on waist line straight down by threads of cloth, and dot ten inches; dot three inches out from ten-inch dot for spring to bottom of basque and draw a line; dot six inches down from waist line directly through the center of the four-inch space to be taken out under arm, and, place point of rule to bottom of first line under arm on waist line and draw a line to the six-inch dot on outside of rule; place point of rule to side body line and draw a line to six-inch dot on inside of rule; be sure these two lines curve towards each other; dot three inches down from arm size on side body line and dot one third inch down from side body line at arm size; place point of rule at that dot and draw a line to lower dot on outside of rule; extend test measure line straight to outside of side body.

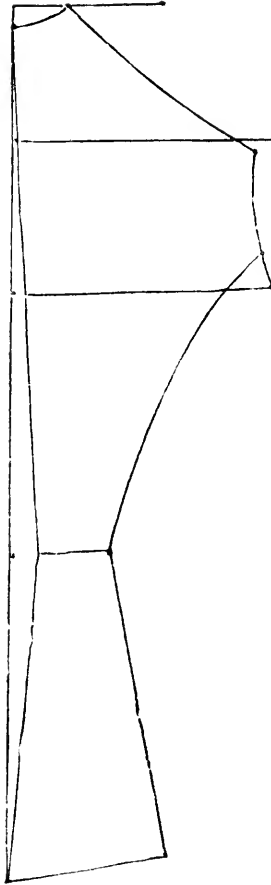


Figure No. 2.

Back for Front No. 1.

Place the lining in same position as for front; draw a line one inch from edge of cloth; while rule is in this position dot at 18 inches; dot one inch inside of line; draw a line from the top of the one inch line to the one inch inside of line; draw a line straight out from first line and down one inch from top of cloth; place the rule above this line with the square end even on first line, and dot at 7 for size of neck; dot on first line one-half inch down from upper line; draw neck with point of rule; place square end of rule at neck on first line with the point down and even on first line, and dot at 16 inches for length of back; place square end of rule at that dot, and even on first line with the point from

you, and draw a line out for waist line; place square end of rule at the 16 inch dot, with the point towards neck, and dot eight inches on first line (the length under arm), and at twelve and one-half inches (the height of shoulder); place square end of rule at the eight inch dot and even on first line, and draw a line out; move square end of rule to inside line, and dot seven and one-half inches for width of back, (the width of back must be drafted one-half inch less than the width of chest, so there is no necessity to take width of back measure); place square end of rule at the 12 inch dot, and even on first line with point from you, and draw a line for height of shoulder; place 21 on rule at the neck size dot, with the edge at the height of shoulder line, and draw a line six inches for length of shoulder. This six inch dot must be directly on height of shoulder line; draw the line one-half inch longer before moving rule; place O on back arm size, at width of back dot with edge at length of shoulder dot, and draw a line for back arm size; dot one inch on arm size from lower dot; place the square end of rule even on first line, and above the length of back dot and draw a line for waist; move the rule to inside line, and dot two inches for width of back on waist line; place C on back form rule to the one inch dot on arm size with the edge at width of back dot, and draw a line to waist line; place square end of rule at the width of back dot on waist line straight down and dot ten inches; dot three inches out from the ten inch dot for spring; draw a line from middle of back on waist line to edge of cloth. Apply the test measure before cutting out, and if there is too little room let out the front seam under arm.

Front of Basque with two Darts and two Side Bodies.

[See figure 3.]

Draft the same as No. 1, except do not take off one inch in front; dot at darts on lower edge of rule, and make the darts two inches wide on waist line, and draw the darts ten inches down from waist line; dot in center of each dart, and draw a straight line from each side of the dart on waist line to dot. Refer to waist measure for number of inches to be used between seams on waist line, and dot the same distance on height of shoulder line as on test line for width of side body arm size.

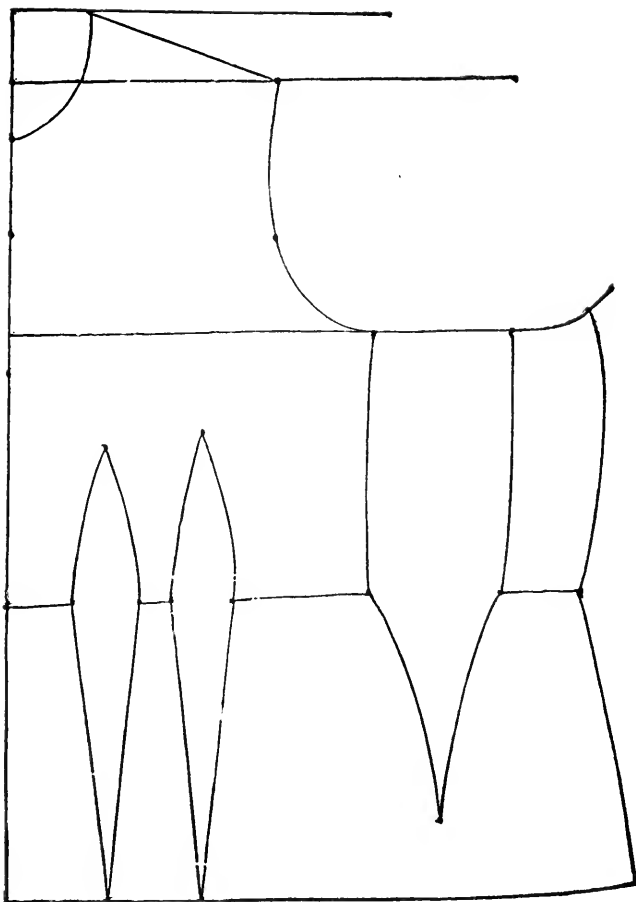


Figure No. 3.

Back of Basque with two Darts and two Side Bodies.

(See figure 4.)

Draft the same as No. 2, except use the number of inches described in waist measure (24), and dot one-third the distance from lower dot on arm size to point of shoulder; place C on back form rule at the dot on arm size, with the edge at width of back form on waist line and draw a line; cut out back allowing for seam, except at neck and arm size; place the back over on cloth far enough to admit spring in back of side body, and even on height of shoulder and width of back lines, so that the threads of back will correspond with those of side body; pin the back to side body and dot at the end of back form line on arm size, and under the same line on waist line; replace rule on width of back line, and extend

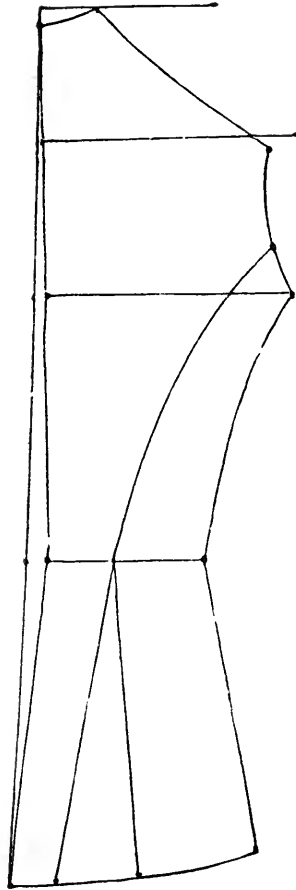


Figure No. 4.

line to seven and one-half inches as before cutting out back; draw the arm size as before; place rule and dot two inches straight out on waist line from bottom of form on back for width of side body; place point of rule at lower dot on arm size, with the edge at dot for width of side body, and draw a line on inside of rule; dot ten inches straight down from both sides of side body, and three inches out for spring; remove back and place C on back form rule at the upper dot on arm size with the edge at first dot on side body and draw a line on inside of back form rule; cut out side body, and allow seams except at neck and arm size.

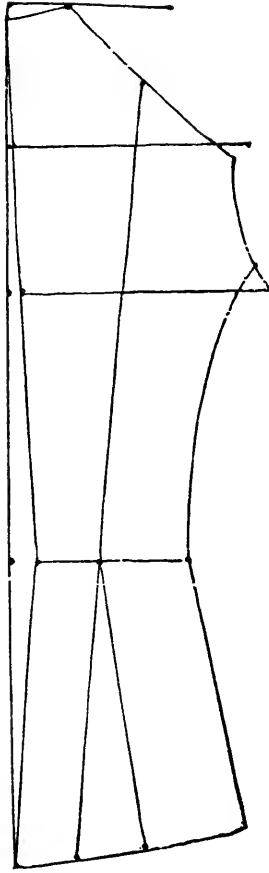


Figure No. 5.

Back with Seam running to Shoulder.

This back can be used with any kind of front.

Draft the same as back No. 4, except dot three inches from neck on shoulder; place 20 on rule at the width of back dot on waist line with the edge of rule at the three inch dot on shoulder, and draw a line on inside of rule; cut out back and place it over, and draft as before.

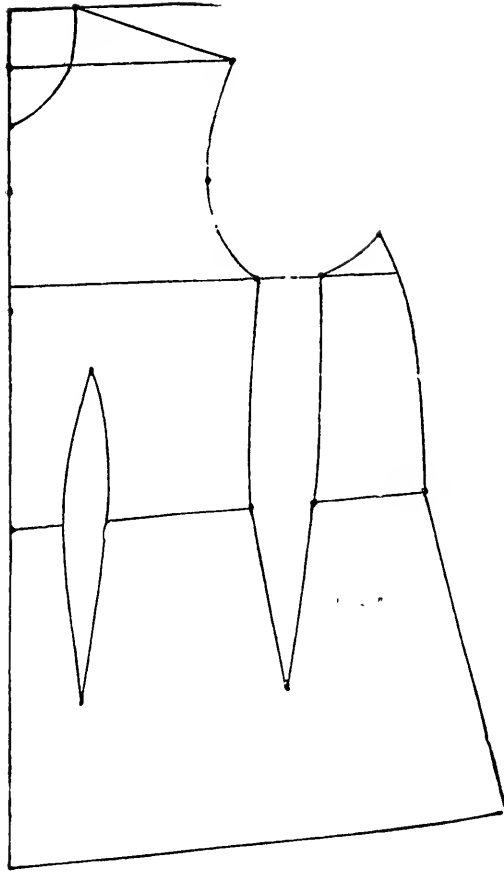


Figure No. 6.

Misses' Waists.

Take the measures the same as for ladies, except the width of back must be of the same width as the chest.

Front for a Tight-Fitting Basque for a Miss.

[See figure 6.]

This front is drafted the same as others, except place the folded edge of cloth toward you (the dress being open at the back); place O on neck rule at neck size dot; stop at B on arm size; dot two inches from neck to get the width of chest, dot two inches out on test line from B dot on arm size; place B on arm size at that dot with the edge at point of shoulder and draw a line to O for arm size; get width of front on

waist line with or without dart; dot two inches from width of front on waist line for dart under arm; dot six inches down on middle of the two inches on skirt and place 20 on rule at waist line to obtain curves; extend waist line and dot for width of side body; place 21 on rule at arm size with edge at width of side body on waist line and draw a line to waist; obtain the length of skirt down the front and the width of skirt from the length dot; draw a line from outside of side body to width of skirt.

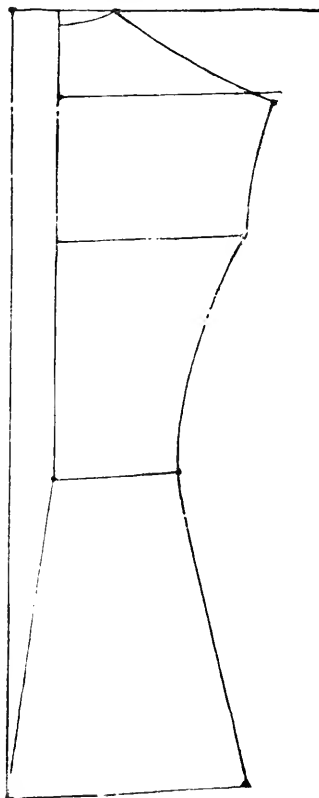


Figure No. 7.

Back for No. 6.

[See figure 7.]

This back is drafted the same as others, except draw first line one width of rule from edge of cloth. Do not take off

one inch on back arm size unless the front side body arm size is drawn one inch beyond O; place 21 cm rule at arm size on side body with the edge at width of side body on waist line; obtain length of skirt and width of skirt and draw a line from bottom of waist to width of skirt.

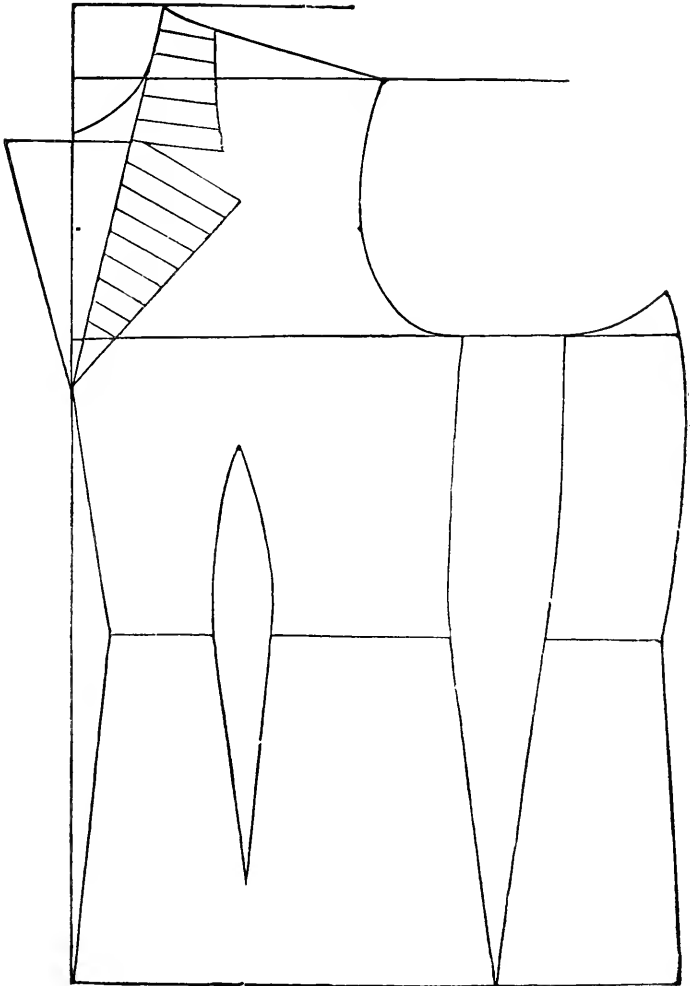


Figure No. 8.

Front for a Half Fitting Coat.

[See figure 8.]

Draft the same as for a tight-fitting basque except draw lap line two and one-half inches from edge of cloth; dot eight and one-half inches for width of chest; seven inches for length of shoulder, and thirty inches for waist measure; to obtain side body arm size, dot the same distance on height of shoulder line as on test or bust line; make space to be taken up on waist line and under arm three inches wide; dot in center of space twelve inches down, and place 20 on rule at waist line to get curves; make distance from front to dart on waist line three inches; from dart to seam under arm five inches; and side body three inches and dart two inches; get length from waist line on the front, and dot for width of skirt from the length dot, and draw a line from outside of form on waist line to width of skirt dot.

To draw the reverse, dot two inches in on coat from lower part of neck, and two inches out from lap line towards edge of cloth; draw a line from last dot to A dot on square end of rule on lap line; cut out the reverse to the two inch dot on coat; turn same over on coat and fit the collar as indicated in the figure.

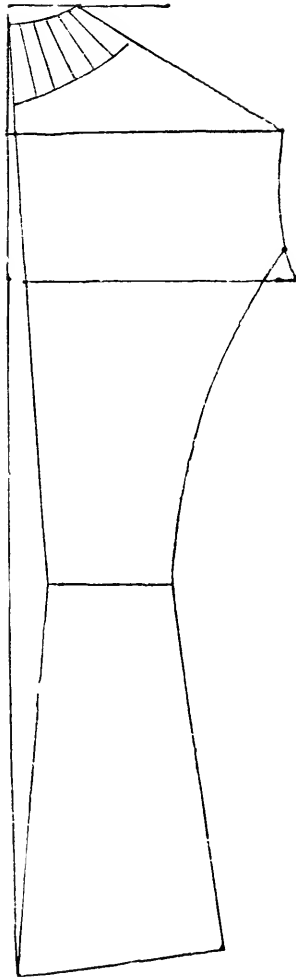


Figure No. 9.

Back for a Half-Fitting Coat.

Draft the same as for a tight-fitting basque, except draft the back shoulder the same length as front (No. 8) and the width of back 8 inches, and make the width of back on waist line 4 inches.

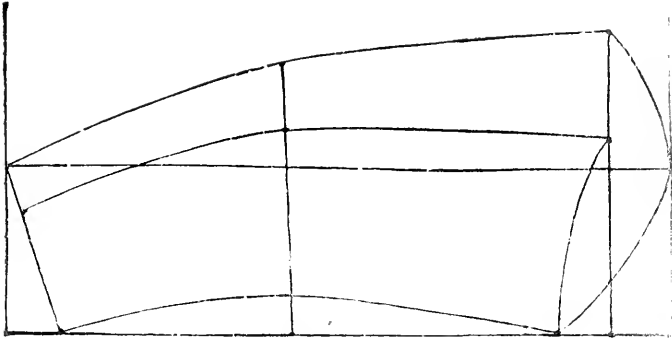


Figure No. 10.

Measures for a Sleeve.

Measure from inside at arm size to elbow, and then to wrist.

Measure around the wrist.

Measure around the elbow.

Measure around the upper part of arm, two inches from top of shoulder with the tape at inside seam at arm size.

In drafting a sleeve, use the following measures:

1. From arm size to elbow..... 8 inches.
2. From elbow to wrist 7 “
3. Size of elbow.....12 “
4. Size of wrist..... 9 “
5. Size around the arm.....14 “

Directions for Drafting a Sleeve.

Draw a straight line twenty inches long; draw a line ten inches long at each end of and at right angles to twenty inch line; dot in the center of both the ten inch lines, and draw a line from dot to dot; place square end of rule at the ten inch line to the right, and dot two inches on twenty inch line; dot one and one-half inches from the two inch dot on same line; place square end of rule at the two inch dot, and even on twenty inch line with the point from you, and draw a line nine inches long; dot one inch toward twenty inch line from the center of the right ten inch line; place O on back arm size at that dot with the edge at the one and one-half inch dot on 20-inch line, and draw a line from dot to dot; dot six and nine inches on the two inch line from twenty inch line; dot eight inches on 20-inch line from one and one-half inch dot, for length of inside seam to elbow; dot seven inches

from the eight inch dot for length from elbow to wrist; place square end of rule at the eight inch dot, and even on twenty inch line, and draw a line for elbow; dot one and one-quarter inch on this line from 20-inch line; place 21 on rule at the one and one-quarter inch dot with the edge at the one and one-half inch dot, and draw a line on outside of rule for length of inside seam to elbow; place 21 on rule at the eight inch dot again with the edge at the seven inch dot, and draw a line on outside of rule for length from elbow to wrist; place square edge of rule at the seven inch dot at wrist, with the edge at the end of the center line, and draw a line out five inches and dot at four inches on same line; dot five and seven inches out from the curved line on elbow line; place 21 on rule at the five inch dot, with the edge at the four inch dot on wrist line, and draw a line on outside of rule, draw a line in the same manner from the seven inch dot to the five inch dot; place 21 on rule at the five inch dot on elbow line again, with the edge at the six inch dot on the two inch line, and draw a line on outside of rule; place 21 on rule at the seven inch dot on elbow line, with the edge at the nine inch dot on the two inch line, and draw a line on outside of rule; place O on under side of arm size at the one inch dot on the right ten inch line, with the edge at the nine inch dot on two inch line, and draw a line from dot to dot for upper part of sleeve; place the point of rule at the end of the one and one-half inch line on twenty inch line with the edge at the six inch dot on the two inch line, and draw a line on under part of rule.

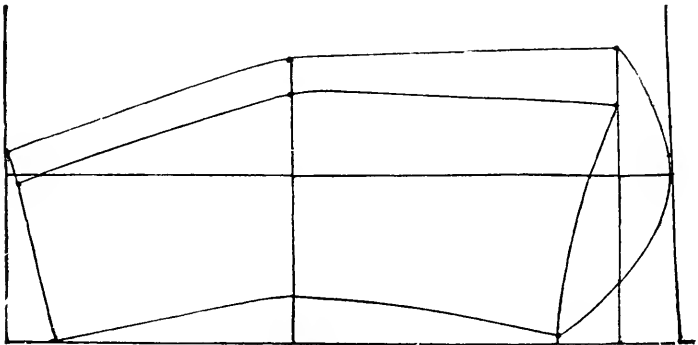


Figure No. 11.

Directions for Drafting Sleeve for a Half-Fitting Coat.

[See figure 11.]

Draft the same as for dress sleeve except make the under part one inch wider on back seam.

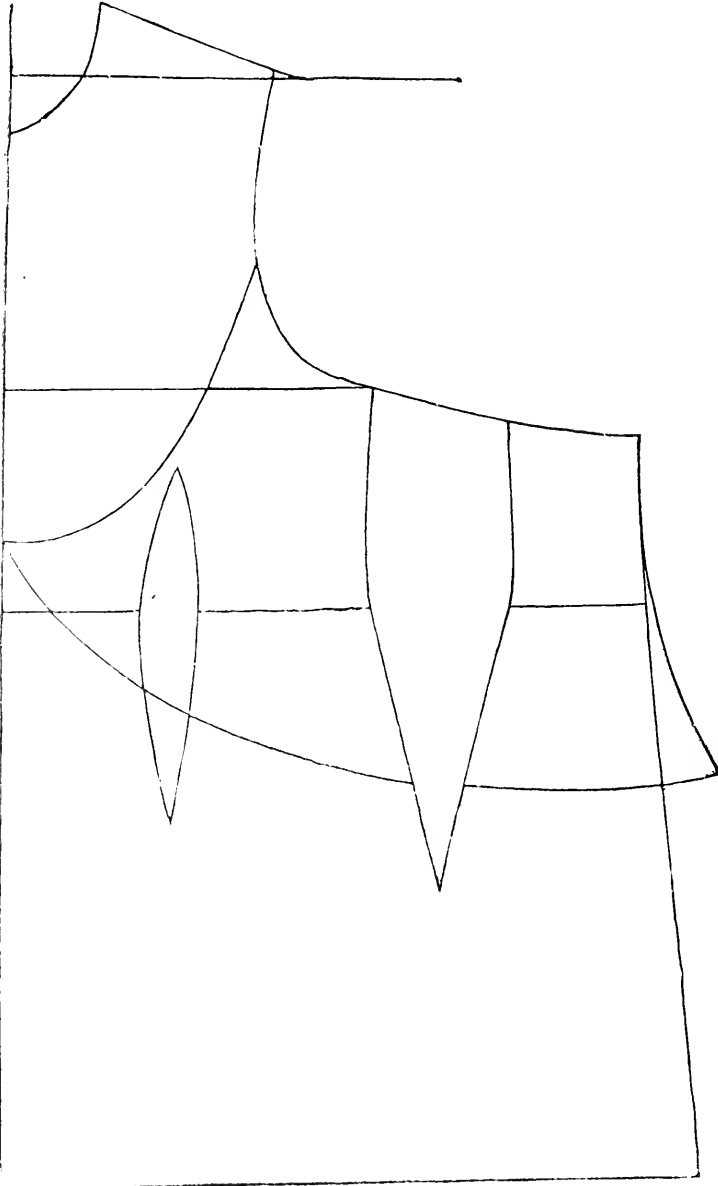


Figure No. 12.

Front for a Cloak.

[See figure 12.]

Draw a line two inches from edge of cloth; draft the same as for a basque, except make waist size eight inches larger than for a tight-fitting basque; dot four inches from front to dart; make dart one and one-half inches wide on waist line; dot five inches from dart to first seam under arm; make space under arm four inches, the same as for a basque; dot four inches for width of side body on waist line; after drawing arm size the same as for a basque, dot two inches down by threads of cloth from A dot on arm size; dot one inch on shoulder line from the six-inch dot so that the shoulder will be five inches long; place A on arm size at the two-inch dot below the arm size, with the edge at the five inch dot on shoulder, and draw a line from dot to dot. This will make the arm size much larger than for the basque. Now dot two inches down from the first dot on side body, and place B on arm size at that dot with the edge at the height of shoulder-line dot, the same as for a basque, and draw a line to point of arm size; draw test line from front to outside of side body as before; cut off point of side body at test line; dot for length of skirt and for width of skirt; draw a straight line from waist line on outside of side body to width of skirt dot; now dot two inches towards the edge of front from lap line; draw a straight line from the test line on front lap line to the two-inch dot at the bottom of skirt in front. Cut out the cloak allowing for seam except on sleeve.

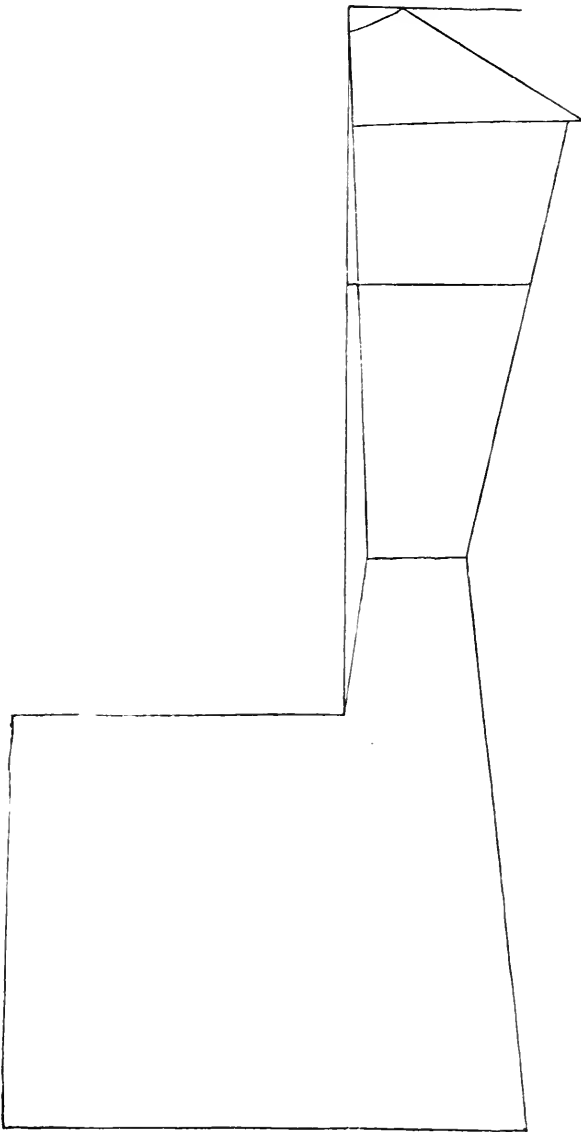


Figure No. 13.

Back for a Cloak.

Draw a line ten inches from edge of cloth for pleats in back, and then draft as for a basque, except after drawing

the shoulder, dot five inches from neck on shoulder line; dot three inches for width of back on waist line; place 21 on rule at that dot with the edge of rule at the five inch dot on shoulder, and draw a line from dot to dot on inside of rule; dot straight down from the width of back dot to bottom of skirt, and dot three inches out from that dot for Spring; dot four inches down from length of back; dot on first line below the waist line; place 21 on rule at the length of back, dot with the edge of rule at the four-inch dot and draw a line on outside of rule. Lay pleats from the four-inch dot down to the bottom of skirt, and cut out the back.

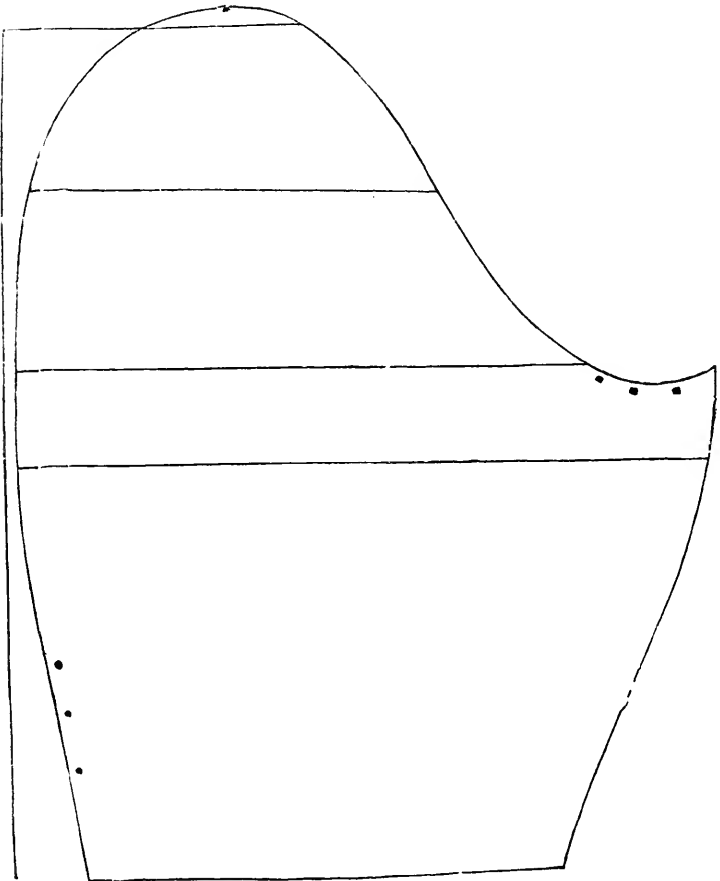


Figure No. 14.

Sleeve for a Cloak.

[See figure 14.]

Draw a line one-half inch from the edge of cloth; place back on line so that the threads of cloth will correspond with those of sleeve; then extend waist line and width of back and height of shoulder lines, now remove back and dot one-half inch on width of back line from the first line; measure width of back on width of back line; measure width of front from the three-inch dot to arm size, and if the combined numbers are 12 inches, dot 12 inches from the one-half inch dot on width of back line on sleeve; now dot four inches from the first line on height of shoulder on sleeve, then dot five inches on same line from the four inch dot; dot one-half inch above the height of shoulder line in the center of the five inches; round the top of sleeve from the four-inch dot, and from the five inch dot to the one-half inch dot place O on back arm size at the five-inch dot with the edge at the twelve-inch dot, and draw a line from dot to dot; place O at the one-half inch dot on width of back line with the edge at the four-inch dot and draw a line from dot to dot; now dot three inches towards shoulder from waist line on first line, and draw a line out from you twenty inches from that dot; place B on arm size at the twenty-inch dot with the edge of front arm size at the twelve-inch dot and draw a curved line for the lower part of the sleeve; dot twelve-inches down on first line from waist line; place the square end of rule at the twelve-inch dot with the point from you and dot two inches; move the square end of the rule to the two inch dot with the point from you and dot at 14 inches for point on sleeve; place 20 on rule at the waist line on first line with the edge at the two-inch dot from the twelve inch dot, and draw a line; draw a straight line from the two-inch dot to the fourteen-inch dot on point of sleeve; place point of rule at the twenty-inch dot at the end of the three-inch line above the waist line, with the edge at the fourteen inch dot for point of sleeve, and draw a line on outside of rule. place 20 on rule at the waist line on first line with the point down and the edge at the one-half inch dot on width of back line and draw a line on inside of rule. The term inside of rule means towards you and outside of rule means from you. To obtain the under part of sleeve dot twelve inches down from neck on lap line and six inches down from shoulder on arm size; curve the line by upper part of sleeve; take up space under arm the same as front, but do not sew it to front; dot five inches down from waist line on side body and two inches out for spring for under part of sleeve; join side body to back at waist line, including under part of sleeve; join upper part of sleeve at edge of

width of back line to the six-inch dot on arm size where the under part of sleeve is joined; lay three pleats on back of sleeve as shown by dots on the figure; also lay pleats on front part of sleeve as shown by dots; pleat the skirt of cloak in the center of back and gather top of sleeve if desired.

Directions for Drafting the Front for a Full Waist.

Draft and cut out the lining the same as for a plain waist; place the lining on the outside far enough over for a lap, and pin it at the neck and at the bottom of the waist in front, make a dot one and one-half inch out from the seam under the arm at the bottom of the waist for fullness; take hold of the outside between the darts with the right hand, and two inches from the point of the shoulder with the left hand, and lay a plait at the bottom of the waist large enough to take in the width of cloth that is dotted under the arm, but be sure that the plait does not extend to the shoulder; then cut out the outside precisely like the lining; take out the pin at the bottom of the waist in front; straighten out the outside at the bottom, and cut off the point that was produced by the plait straight to the arm size, but do not cut off any in front; baste the outside smoothly to the lining from the seam under the arm to within one inch of the back dart, and round to the neck; take up the darts in the lining and gather in the outside for fullness.

Directions for Drafting the Back for a Full Waist.

Draft and cut out the lining the same as for a plain waist; place the lining on the outside even at the neck and one inch from the edge of the outside cloth at the bottom of the waist, the cloth being double; then dot the same at the bottom of the waist and under the arm as for the front; lay the plait the same as for the front, commencing two inches from the middle of the back at the bottom of the waist; then cut out the outside precisely like the lining; straighten out the outside and cut it off one-third of an inch in the middle of the back, sloping to the bottom of the waist under the arm; baste the outside smoothly from the seam under the arm to within two inches of the middle of the back on the lining, and gather in the outside for fullness.

Rounding the Fronts.

All waists with one dart should be rounded up the front if the bust is full. To do this, dot one-half inch out on the lap from A dot on the square end of rule, and place 21 on rule at dot with the point up and the edge at the one-inch dot on waist line, and draw a line on inside of rule; place 21 at the one-inch dot again with the point down and the

upper edge at neck, and draw a line on inside of rule; draw a line from the one-inch dot on waist line 6 inches down to line for lap.

Dropping the Neck for a Stout Lady with a Short Neck.

After the waist is drafted dot one-half inch down on the front of neck from shoulder, and draw the shoulder from that dot to point of shoulder as before; draw the neck from the one-half inch dot to size of neck as before. Drop the back of neck one-half an inch.

Width of Back.

The width of back is obtained from the width of chest, and should be one-half inch less. If two side bodies are desired, and the back side body at arm size is too narrow, make the width of back the same as width of chest and take off $1\frac{1}{2}$ inch from point of side body on front arm size.

Darts.

The width of darts must be governed by the size of the ladies' bust. If a lady has a full low bust with a small waist and two darts are desired, draw both darts the width of rule on waist line.

For stout ladies, dot $\frac{3}{4}$ of an inch further towards arm size for second dart.

If one dart is desired, make it 3 inches wide on waist line.

If a lady has a straight slight figure with small bust, and one dart is desired, draw the dart the width of rule.

If two darts, make each dart 2 inches wide on waist line. It will be seen that the darts can be made any width desired.

After drafting the lining and before cutting out, apply the test measure; and if more room is required, dot out from under arm size on front and draw a line from bottom of waist to dot for seam.

The back can be let out in the same manner if required.

Cutting out the Waist.

Cut out the lining and allow for seams, except at arm size and neck; place the lining on the outside and baste smoothly; cut the outside just like the lining; then cut out darts, allowing for small seams, and allow one inch for seam under arm.

Drafting for Ladies with Round Shoulders.

Dot three inches from neck on front shoulder; then dot one-half inch down on neck from shoulder; place 21 on rule to that dot, and draw a line from dot to dot.

Basting the Waist.

Join the under arm seam even at bottom of waist; join the darts even at bottom of waist; hold the front side of dart a little full, one inch from waist line to within one inch of top of darts. Stretch out the darts before trying on. The back of shoulder is one-half inch longer than the front; join the front to back even at neck and at shoulder. Stretch out front so it will correspond with back; join side body to back even at bottom of waist, and stretch it so it will be even with back at arm size. Baste the lower part of basque smoothly from bottom of waist to bottom of skirt.

Trying on the Waist.

To try on the waist, the lady to be fitted should stand with her back towards you. Take the waist in both hands so that she can put both arms through at once. Before the waist is pinned up in front, turn seams on shoulders and under the arms to the front, and dart seams back. Pin up front, commencing at the neck, and avoid pinning the dress to the corset. After the front is closed, take hold of each side of waist just above the bust and near arm size and pull it up; then pull down the back. This gives a smooth side piece and plenty of room from point of the shoulder to bottom of waist.

The waist should be tried on to ascertain whether the measures have been taken right; but in no case should the lining be fitted on the figure, before the outside is put on, for that will stretch out the lining and make a bad fitting waist. If the waist is too large take it off and take in seam on the shoulders and under the arms, and be sure to get them the same shape as in the drawing, but do not pin it on the figure, for in nearly every case this makes a one-sided waist, which shows more plainly after it is worn a short time.

Making up the Waist.

Much care should be taken, in stitching up the seams, not to have them pucker. After the waist is stiched, trim off the seams quite small, press them open and baste them fast to the lining. This will give a smooth fitting seam.

Whalebones.

Whalebones should never be put inside of the seams, but the seams should be opened and bias casings sewed on them for the bones. The bones for the darts should be made quite thin and should extend up to within one inch and a half of the top of the darts. The bone in front should be the same length as those for the front darts.

Directions for Different Waist Measures.

WAIST 21. With one dart and one side body.

Take 1 inch off in front; dot 2 inches out on waist line for width from front to dart; then draw the dart; dot $3\frac{1}{2}$ inches from dart out on waist line for the distance from dart to under arm seam; dot 4 inches out from last dot; this space must be taken up in the seam under arm; dot $3\frac{1}{2}$ inches from under arm seam for width of side body; draft back $1\frac{1}{2}$ inches for width of back.

One dart and two side bodies.

1 off, 2, dart, $2\frac{1}{2}$, 4 off, $2\frac{1}{2}$, back $1\frac{1}{2}$, side body, 2.

Two darts and one side body.

2, dart, 1, dart, $3\frac{1}{2}$, 4 off, $2\frac{1}{2}$, back, $1\frac{1}{2}$.

Two darts and two side bodies.

$1\frac{1}{2}$, dart, 1, dart, 3, 4 off, 2, back, $1\frac{1}{2}$, $1\frac{1}{2}$.

WAIST 22. One dart and one side body.

1 off, $2\frac{1}{2}$, dart, $3\frac{1}{2}$, 4 off, $3\frac{1}{2}$, back, $1\frac{1}{2}$.

One dart and two side bodies.

1 off, $2\frac{1}{2}$, dart, 3, 4 off, 2, back, $1\frac{1}{2}$, 2.

Two darts and one side body.

2, dart, 1, dart, $3\frac{1}{2}$, 4 off, 2, back, 2, $2\frac{1}{2}$.

Two darts and two side bodies.

2, dart, 1, dart, 3, 4 off, 2, back, $1\frac{1}{2}$, $1\frac{1}{2}$.

WAIST 23. One dart and one side body.

1 off, $2\frac{1}{2}$, dart, 4, 4 off, 3, back, 2.

One dart and two side bodies.

1 off, $2\frac{1}{2}$, dart, 3, 4 off, 2, back, $1\frac{1}{2}$, 2.

Two darts and two side bodies.

2, dart, 1, dart, 3, 4 off, 2, back, $1\frac{1}{2}$, 2.

Two darts and one side body.

2, dart, 1, dart, $3\frac{1}{2}$, 4 off, 3, back, 2.

WAIST 24. One dart and one side body.

1 off, $2\frac{1}{2}$, dart, 4, 4 off, $3\frac{1}{2}$, back, 2.

One dart and two side bodies.

1 off, $2\frac{1}{2}$, dart, $3\frac{1}{2}$, 4 off, $2\frac{1}{2}$, back, $1\frac{1}{2}$, 2.

Two darts and two side bodies.

2, dart, 1, dart, 3, 4 off, $2\frac{1}{2}$, back, $1\frac{1}{2}$, 2.

Two darts and one side body.

2, dart, 1, dart, 4, 4 off, 3, back, 2.

WAIST 25. One dart and one side body.

1 off, 3, dart, 4, 4 off, $3\frac{1}{2}$, back, 2.

One dart and two side bodies.

1 off, $2\frac{1}{2}$, dart, 4, 4 off, $2\frac{1}{2}$, back, $1\frac{1}{2}$, 2.

Two darts and two side bodies.
2, dart, 1, dart, 4, 4 off, $2\frac{1}{2}$, back, $1\frac{1}{2}$, 2.

Two darts and one side body.
2, dart, 1, dart, 4, 4 off, $3\frac{1}{2}$, back, 2.

WAIST 26. One dart and one side body.
1 off, 3, dart, $4\frac{1}{2}$, 4 off, $3\frac{1}{2}$, back, 2.

One dart and two side bodies.
1 off, $2\frac{1}{2}$, dart, $4\frac{1}{2}$, 4 off, $2\frac{1}{2}$, back, $1\frac{1}{2}$, 2.

Two darts and two side bodies.
2, dart, 1, dart, 4, 4 off, $2\frac{1}{2}$, back, $1\frac{1}{2}$, 2.

Two darts and one side body.
2, dart, 1, dart, 4, 4 off, 4, back, 2.

WAIST 27. One dart and one side body.
1 off, 3, dart, $4\frac{1}{2}$, 4 off, 4, back, 2.

One dart and two side bodies.
1 off, 3, dart, 4, 4 off, $2\frac{1}{2}$, back, $1\frac{1}{2}$, $2\frac{1}{2}$.

Two darts and two side bodies.
2, dart, 1, dart, $4\frac{1}{2}$, 4 off, $2\frac{1}{2}$, back, $1\frac{1}{4}$, 2.

Two darts and one side body.
2, dart, 1, dart, $4\frac{1}{2}$, 4 off, 4, back, 2.

WAIST 28. One dart and one side body.
1 off, 3, dart, $4\frac{1}{2}$, 4 off, 4, back, 2.

One dart and two side bodies.
1 off, 3, dart, 4, 4 off, 3, back, $1\frac{1}{2}$, $2\frac{1}{2}$.

Two darts and two side bodies.
2, dart, 1, dart, 4, 4 off, $2\frac{1}{2}$, back, 2, $2\frac{1}{2}$.

Two darts and one side body.
2, dart, 1, dart, $4\frac{1}{2}$, 4 off, 4, back, $2\frac{1}{2}$.

WAIST 29. One dart and one side body.
1 off, 3, dart, 5, 4 off, $4\frac{1}{2}$, back, 2.

One dart and two side bodies.
1 off, 3, dart, $4\frac{1}{2}$, 4 off, 3, back, 2, 2.

Two darts and two side bodies.
 $2\frac{1}{2}$, dart, 1, dart, 4, 4 off, 3, back, 2, 2.

Two darts and one side body.
 $2\frac{1}{2}$, dart, 1, dart, $4\frac{1}{2}$, 4 off, 4, back, $2\frac{1}{2}$.

WAIST 30. One dart and one side body.
1 off, 3, dart, 5, 4 off, $4\frac{1}{2}$, back, $2\frac{1}{2}$.

One dart and two side bodies.
1 off, 3, dart, 5, 4 off, 3, back, 2, 2.

Two darts and two side bodies.
 $2\frac{1}{2}$, dart, 1, dart, 4, 4 off, 3, back, $2\frac{1}{2}$, 2.

Two darts and one side body.
 $2\frac{1}{2}$, dart, 1, dart, 5, 4 off, 4, back, $2\frac{1}{2}$.

WAIST 31. One dart and one side body.

1 off, 3, dart, $5\frac{1}{2}$, 4 off, $4\frac{1}{2}$, back, $2\frac{1}{2}$.

One dart and two side bodies.

1 off, 3, dart, 5, 4 off, 3, back, 2, $2\frac{1}{2}$.

Two darts and two side bodies.

$2\frac{1}{2}$, dart, 1, dart, 5, 4 off, 3, back, 2, 3.

Two darts and one side body.

2, dart, 1, dart, $5\frac{1}{2}$, 4 off, 4, back, $2\frac{1}{2}$.

WAIST 32. One dart and one side body.

1 off, 3, dart, $5\frac{1}{2}$, 4 off, 5, back, $2\frac{1}{2}$.

One dart and two side bodies.

1 off, 3, dart, $5\frac{1}{2}$, 4 off, 3, back, 2, $2\frac{1}{2}$.

Two darts and two side bodies.

$2\frac{1}{2}$, dart, 1, dart, 5, 4 off, 3, back, 2, $2\frac{1}{2}$.

Two darts and one side body.

$2\frac{1}{2}$, dart, 1, dart, 5, 4 off, 5, back, $2\frac{1}{2}$.

WAIST 33. One dart and one side body.

1 off, $3\frac{1}{2}$, dart, 5, 4 off, 5, back, 3.

One dart and two side bodies.

1 off, $3\frac{1}{2}$, dart, 5, 4 off, $3\frac{1}{2}$, back, 2, $2\frac{1}{2}$.

Two darts and two side bodies.

3, dart, 1, dart, $4\frac{1}{2}$, 4 off, $3\frac{1}{2}$, back, 2, $2\frac{1}{2}$.

Two darts and one side body.

3, dart, 1, dart, $5\frac{1}{2}$, 4 off, $4\frac{1}{2}$, back, $2\frac{1}{2}$.

WAIST 34. One dart and one side body.

1 off, $3\frac{1}{2}$, dart, $5\frac{1}{2}$, 4 off, 5, back, 3.

One dart and two side bodies.

1 off, $3\frac{1}{2}$, dart, $5\frac{1}{2}$, 4 off, 3, back, 2, 3.

Two darts and two side bodies.

3, dart, 1, dart, 5, 4 off, $3\frac{1}{2}$, back, 2, $2\frac{1}{2}$.

Two darts and one side body.

3, dart, 1, dart, $5\frac{1}{2}$, 4 off, 5, back, $2\frac{1}{2}$.

WAIST 35. One dart and one side body.

1 off, $3\frac{1}{2}$, dart, $5\frac{1}{2}$, 4 off, 5, back, $3\frac{1}{2}$.

One dart and two side bodies.

1 off, $3\frac{1}{2}$, dart, $5\frac{1}{2}$, 4 off, 3, back, $2\frac{1}{2}$, 3.

Two darts and two side bodies.

3, dart, 1, dart, 5, 4 off, 3, back, $2\frac{1}{2}$, 3.

Two darts and one side body.

3, dart, 1, dart, $5\frac{1}{2}$, 4 off, 5, back, 3.

WAIST 36. One dart and one side body.

1 off, $3\frac{1}{2}$, dart, $5\frac{1}{2}$, 4 off, $5\frac{1}{2}$, back, $3\frac{1}{2}$.

One dart and two side bodies.

1 off, $3\frac{1}{2}$, dart, $5\frac{1}{2}$, 4 off, $3\frac{1}{2}$, back, $2\frac{1}{2}$, 3.

Two darts and two side bodies.
 3, dart, $1\frac{1}{2}$, dart, $5\frac{1}{2}$, 4 off, 3, back, 2, 3.
 Two darts and one side body.
 3, dart, $1\frac{1}{2}$, dart, 5, 4 off, $3\frac{1}{2}$, back, 2, 3.

WAIST 37. One dart and one side body.
 1 off, $3\frac{1}{2}$, dart, $5\frac{1}{2}$, 4 off, $5\frac{1}{2}$, back, 4.
 One dart and two side bodies.
 1 off, $3\frac{1}{2}$, dart, $5\frac{1}{2}$, 4 off, 4, back, $2\frac{1}{2}$, 3.
 Two darts and two side bodies.
 3, dart, $1\frac{1}{2}$, dart, 5, 4 off, 4, back, 2, $2\frac{1}{2}$.
 Two darts and one side body.
 3, dart, $1\frac{1}{2}$, dart, $5\frac{1}{2}$, 4 off, $5\frac{1}{2}$, back, 3.

WAIST 38. One dart and one side body.
 1 off, 4, dart, $5\frac{1}{2}$, 4 off, $5\frac{1}{2}$, back, 4.
 One dart and two side bodies.
 1 off, 4, dart, $5\frac{1}{2}$, 4 off, 4, back, $2\frac{1}{2}$, 3.
 Two darts and two side bodies.
 $3\frac{1}{2}$, dart, $1\frac{1}{2}$, dart, 5, 4 off, 4, back, 2, 3.
 Two darts and one side body.
 $3\frac{1}{2}$, dart, $1\frac{1}{2}$, dart, $5\frac{1}{2}$, 4 off, 5, back, $3\frac{1}{2}$.

WAIST 39. One dart and one side body.
 1 off, 4, dart, 6, 4 off, $5\frac{1}{2}$, back, 4.
 One dart and two side bodies.
 1 off, 4, dart, 6, 4 off, 4, back, $2\frac{1}{2}$, 3.
 Two darts and two side bodies.
 $3\frac{1}{2}$, dart, $1\frac{1}{2}$, dart, $5\frac{1}{2}$, 4 off, $3\frac{1}{2}$, back, $2\frac{1}{2}$, 3.
 Two darts and one side body.
 3, dart, $1\frac{1}{2}$, dart, 6, 4 off, $3\frac{1}{2}$, back, $2\frac{1}{2}$, 3.

WAIST 40. One dart and one side body.
 1 off, 4, dart, $6\frac{1}{2}$, 4 off, $5\frac{1}{2}$, back, 4.
 One dart and two side bodies.
 1 off, 4, dart, 6, 4 off, $4\frac{1}{2}$, back, $2\frac{1}{2}$, 3.
 Two darts and two side bodies.
 $3\frac{1}{2}$, dart, $1\frac{1}{2}$, dart, $5\frac{1}{2}$, 4 off, 4, back, $2\frac{1}{2}$, 3.
 Two darts and one side body.
 $3\frac{1}{2}$, dart, $1\frac{1}{2}$, dart, 6, 4 off, 5, back, 4.

It will be seen by foregoing directions for different waists' measures that four different styles of waists are mathematically worked out from the same measurement, viz:

1. One dart and one side body.
2. One dart and two side bodies.
3. Two darts and two side bodies, and
4. Two darts and one side body.



LIBRARY OF CONGRESS



0 013 973 064 1