

SF 453

· N3

STANDARD OF
PERFECTION
FOR
RABBITS, CAVIES
MICE, RATS &
SKUNKS



BY
THE NATIONAL
PET STOCK
ASSOCIATION
OF AMERICA

PRICE 50 CENTS

COPYRIGHT 1915

All rights reserved.

Anyone using any part or illustration without permission will be prosecuted.

**Copies of this standard can be secured of
Wm. I. Lyon, Past Pres., Waukegan Ill., or
C. S. Gibson, Sec.; 1045 W. Warren Ave., Detroit, Mich.**



JAN -6 1915

SF 453
.N3

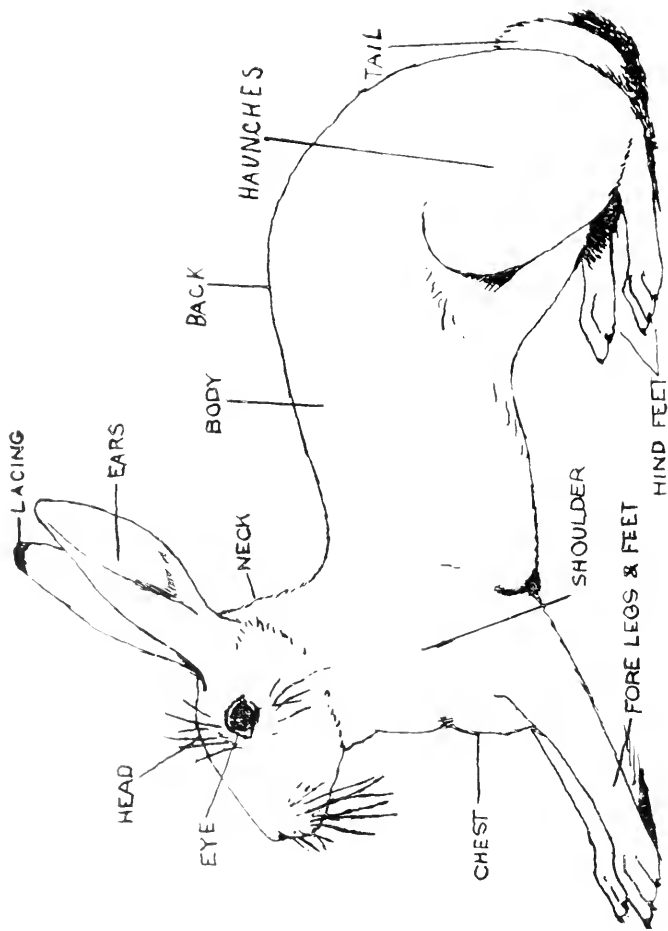


ANGORA

FRONT	Chest and Head well covered with thick, long wool, good tuft between the ears	10
EARS	Short and erect, well covered with tufts or tassels at the tips	10
SIZE AND SHAPE	Size about 6 pounds, shape to have the appearance of a large soft ball when in repose	15
WOOL	Quality of the wool shall be as fine and silky in texture as possible	30
WOOL	Length and Quantity, to be long and thick, evenly distributed all over body without mats	25
CONDITION	Clear, well groomed, no mats, solid in flesh	10

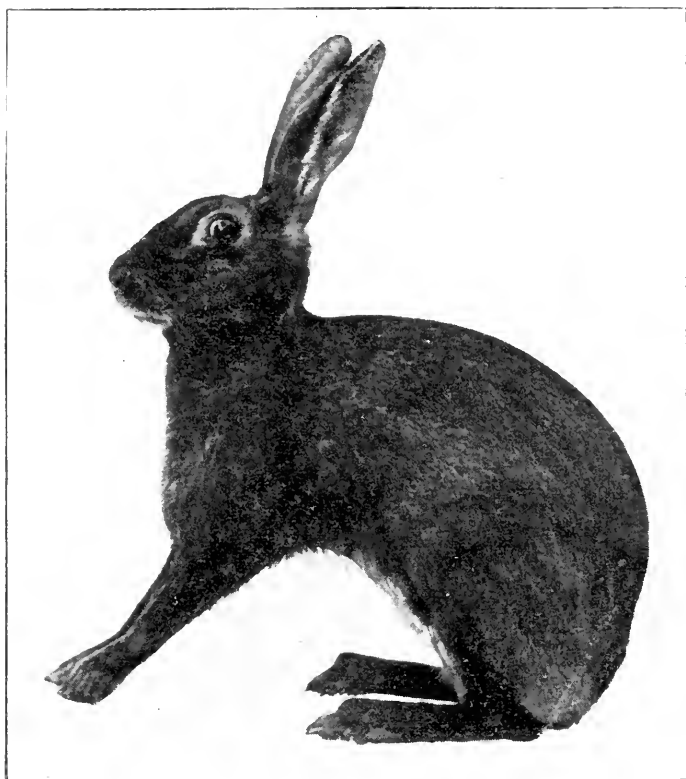
100

Eyes Pink in whites, Legs and tail well woolled, cottony or wiry harsh hair to be avoided.



IDEAL BELGIAN HARE

Showing
Shape and Location
of points



BELGIAN HARE

COLOR	Rich Rufous red (not dark smudgy color) carried well down sides and hind quarters, as little white under jaws as possible	20
SHAPE	Body long thin well tucked up at flank and well ribbed up, back slightly arched, loins well rounded, not choppy. Head rather lengthy, muscular chest, tail straight, and and altogether of racy appearance	20
TICKING	Wavy appearance and plentiful.....	10
EARS	About 5 in., thin, well laced on tips, far down the outside edge as possible. Good color inside and outside and well set on	10
EYES	Hazel color, large, round, bright and bold	10
LEGS & FEET	Fore feet and legs long, straight, slender, well colored, and free from white bars. Hind feet well colored	10
	Without dewlap	10
WEIGHT	About eight pounds	05
CONDITION	Perfectly healthy, not fat, but flesh firm, good quality of fur	05



DUTCH

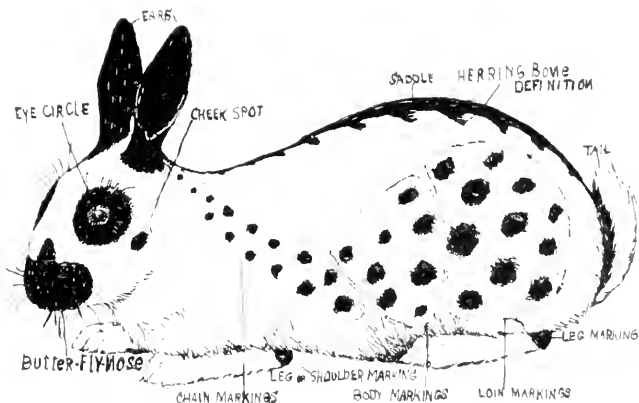
FACE	Blaze, tapering white wedge from nose to Ears with white line running between ears above whiskers running up to and including Ears, Almond shape	15
EYES	Color to match body, hazel in blacks	05
EARS	Strong, erect, color to match body	10
NECK	Clean cut line of color around the base of Ears, balance white	10
SADDLE	A white belt from just back of fore legs to ears, clean cut, straight line around body, upper part	10
	Lower part	10
FEET STOPS	White boots from toe up 1½ inches, cut off square, both feet to match.....	15
SIZE	5 pounds or under	05
SHAPE	Short, coby and compact	05
CONDITION	Round, sleek, short fine glossy fur	05
COLOR	Absolutely solid no blending at division	10

 100

CUTS

Speck on eye	10
Wall eye	20
Over 5½ pounds	20

Dutch are bred in Black, Blue, Tortoiseshell, Tortoise and Steel Grey.



ENGLISH

NOSE	Smut to be a perfect butterfly in shape....	15
EYES	Clear and bold	03
	Colored circle around each eye	08
	Spot on cheek to be clear from circle	06
EARS	About 4 inches, erect and free from white hairs	05
SADDLE	From head to tail solid color, in broken line, herring boned in appearance	10
CHAIN	Even line of links (or spots) from neck to loin as even as possible	12
SIDES	Patched with small color spots but not to join saddle	12
LEG	Markings, one distinct spot on each, near knee, front legs 6, back 2	08
BELLY	Or teat marks. Should be 6 distinct spots	06
COLOR	Markings on both sides should correspond in position, size and shape. The fur throughout except markings to be pure white	05
SIZE	Between Belgian and Silver, 6 to 8 pounds	05
CONDITION	Even coat, healthy appearance.....	05

 100

English are bred in Black, Blue, Tortoise, Grey and occasionally a yellow is produced.



FLEMISH GIANTS

HEAD	Large, full and shapely, color to match body	05
EARS	Strong, moderately thick and erect, color same as body	05
BODY	Large, long, flat—broad fore and hind quarters. Does to have even dewlap	15
LEGS & FEET	Strong and straight, large and powerful	15
SIZE	To be as large as possible	16
WEIGHT	Bucks should not weigh less than 11 pounds; Does should not weigh less than 13 pounds, and as much more as possible	14
COLOR	Shall be dark steel-grey with even wavy ticking over whole body, head, ears, chest and feet, except under belly and under tail shall be as near white as possible	20
CONDITION	Full even coat, solid flesh	10

100

The following table of weights should be tried for in raising the young: 1 month old, 2 lbs.; 2 months, 4 lbs.; 3 months, 6 lbs.; 4 months, 8 lbs.; 5 months, 9½ lbs.; 6 months, 10½ lbs., and does should increase 1 lb. a month for the next 4 or more months.



GIANT RABBIT—SOLID COLOR

HEAD	Full, large and shapely	05
EARS	Strong, moderately thick and erect, color same as body	05
BODY	Large, long and flat, hind quarters broad and large showing good meat qualities	15
LEGS & FEET	Large, strong and straight	05
SIZE	As large as possible.	16
WEIGHT	Bucks should not weigh less than 11 pounds; Does should not weigh less than 13 pounds, and as much more as possible	14
COLOR	Solid throughout entire body above and below. Head, Ears and feet all to match . . .	20
COAT	Shall be even, thick and fine for best fur quality	15
CONDITION	Good solid flesh	05

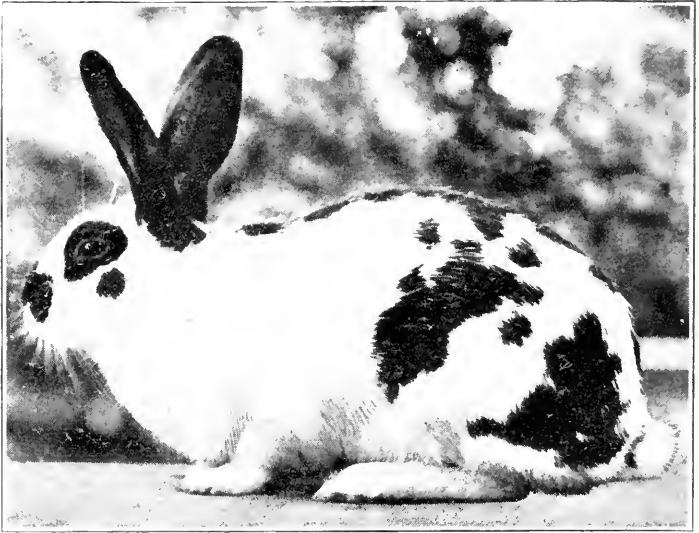
100

Above standard to include solid Black, White, Grey, Red, Brown and Blue.

NEW ZEALAND RED HARES

NEW ZEALAND RED HARES should be judged by above standard as near as possible. They should be bred to a rich solid dark red and be a giant in size.

The weight table for raising the young should be the one used for the Flemish.



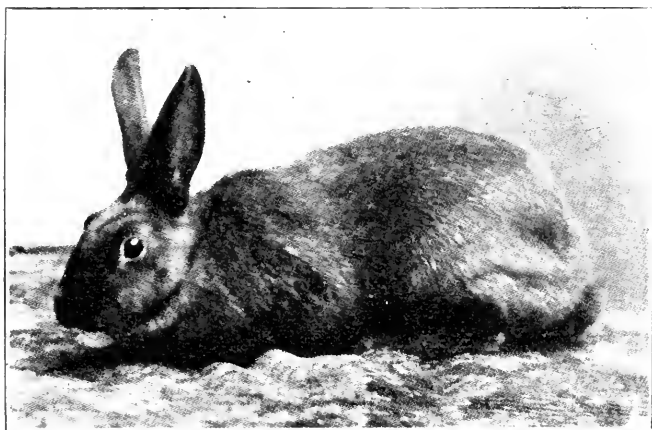
CHECKERED GIANTS (German)

(German Standard)

BODY AND LENGTH	Well rounded body, with extreme length	25
WEIGHT	Bucks to be not less than 11 pounds, and Does to be not less than 13 pounds	20
SHAPE AND HEIGHT	Long shapely body, standing upright in a lively position	15
EARS	Firm, to stand erect, solid in color	10
COLOR MARKS AND FUR	Markings similar to the English but much heavier and without the chain marks. The fur should be medium length and even	20
CONDITION	Vigorous and good health	10
		100

Note:—This breed is one of the popular utility rabbits of Germany, used for meat and fur.

The weight table for young is the same as for the Flemish.

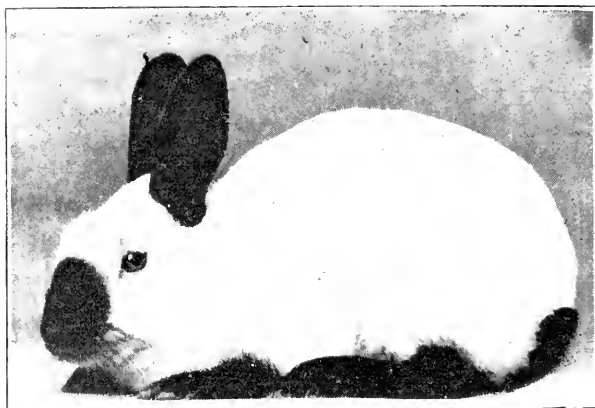


HAVANA

EARS	Erect and neat shape, fine in substance, solid brown color	10
EYES	To match body color showing red light in pupil	05
SHAPE	Small fine boned neat small head shape-ly long body	15
SIZE	From five to six pounds	05
FEET	Straight and slender, toe nails to be brown	10
COAT	Short, even, fine with silky gloss, good fur quality	15
COLOR	Rich Chestnut brown or Tobacco Color throughout entire body, under color shows light grey	35
CONDITION	05

100

This rabbit is used in France for the fur. The brown color is a very desirable color as it can be used as an imitation of many of the more valuable furs.



HIMALAYAN RABBIT

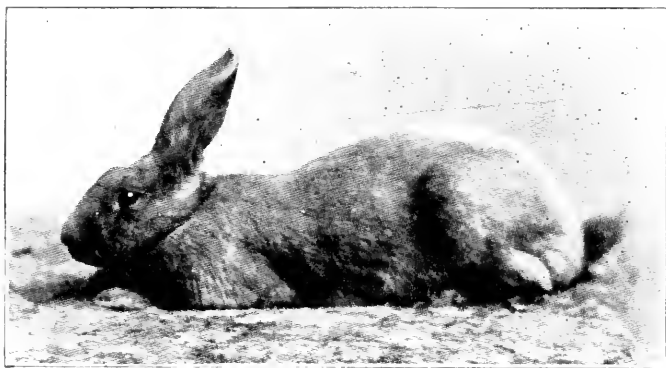
Density of color, color divisions as sharp as possible without blending, size and shape of marking.

NOSE	Smut as large and round as possible, covering about one-third of the face, but not reaching the eyes	15
EARS	Colored from base to tip, with clear white space between	15
FORE LEGS	From the toe to the knees solid black, the pads under the foot are lighter.....	15
HIND LEGS	Same as fore legs, only more important for color	25
TAIL	Solid color from base to tip	05
FUR	Quality fine, short and glossy	10
SHAPE	Body long, small and compact, no dew-lap, ears erect, fine limbs	05
WEIGHT	Four to five pounds, not over five, four pounds preferred	05
CONDITION	05

 100

Note:—When the young Himalayan is borne it is pure white, in two weeks a little smut appears on its nose and increases gradually, the color of the

Legs and tail appears next, and that of the ears appears last, all growing darker until 5 to 6 months when the full color is attained.



IMPERIALS

EYES	Large and bright, deep blue color, to match the color of the body	05
EARS	Erect 4½ inches, round at tips, set close together at base	15
HEAD	Narrow tapering in graceful lines, not too large	10
FEET	Straight and strong, color to match the body	05
SHAPE AND SIZE	Similar to the Belgian but shorter limbs. Six to seven pounds	25
COLOR	Dark blue even in shade throughout entire body	25
COAT	Rather long haired, soft and bright	10
CONDITION	Healthy; firm, hard flesh	05
		100

Note:—The color known as blue in all animals is similar to that of our common maltese cat.



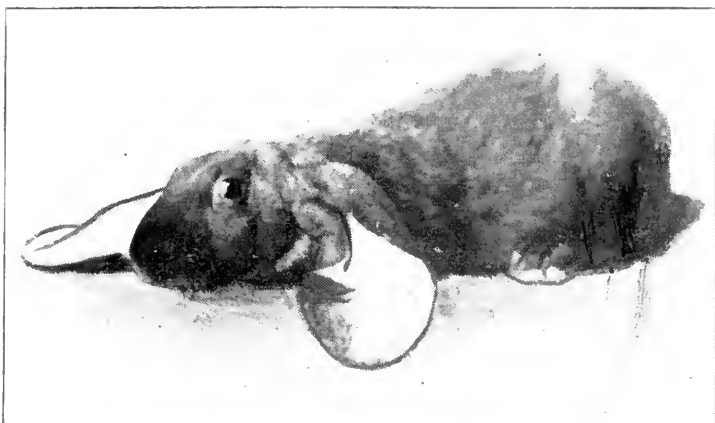
THE JAPANESE RABBIT

The Japanese Rabbit's color is intended to represent the rising sun and has circles running around the body at irregular intervals; the bands forming the circles are not regular in size or width; the circles represent the sun's rays and the under color the sun.

IRREGULAR MARKINGS	Or an unequal distribution of the color bands	30
UNDERCOLOR	Distinct and shiny, from cream and egg gold to a brick red	20
SHAPE	Rather short and thick set with strong limbs, weight about 8 pounds	20
EARS AND HEAD	Undercolor to match body and spotted over with black patches	10
FUR	To be thick and even	10
CONDITION	10

 100

Defects are unclear color of bands showing a mottled appearance. Under color fading out till it shows pure white spots.



LOPS

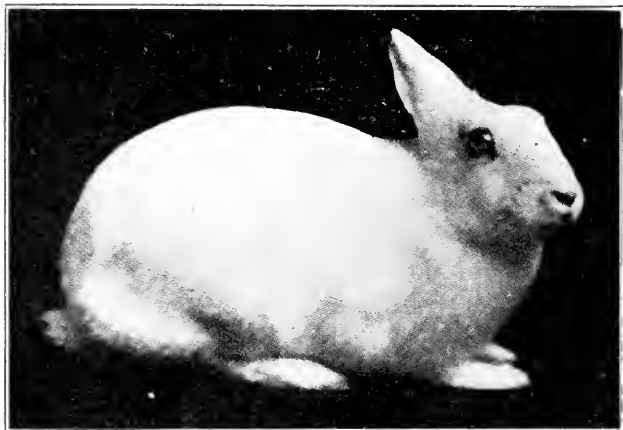
EARS	Any ear length class, length from tip to tip	25
	Width across the ears at widest part	20
	Substance and shape of ears	10
EYES	Large and bold	05
LEGS	Medium sized, straight	05
TAIL	Straight and even	05
SHAPE	Arched body	05
SIZE	Bucks 10 lbs. Does 11 lbs.	05
COLOR	And markings	10
CONDITION	Compact, healthy appearance	10

 100

Limit classes 23, 24 and 25 inch in length

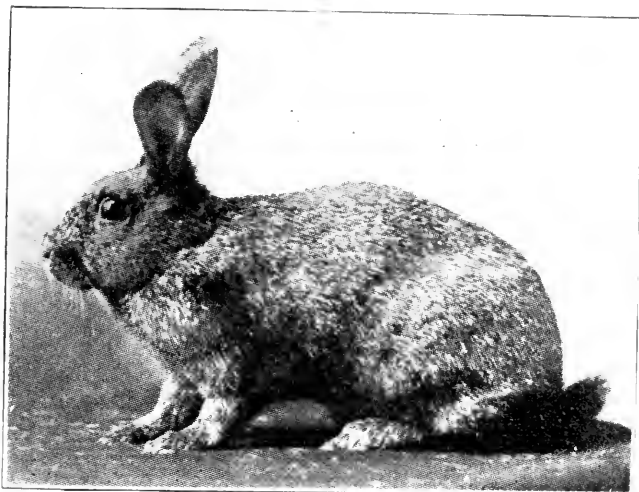
EAR	Length from tip to tip	15
	Width across widest part	15
	Substance and shape	05
SHAPE	And carriage of rabbit	10
COLOR	And markings	15
STRAIGHT	Feet and tail	10
EYE	10
SIZE	Bucks, 10 lbs.; Does, 11 lbs.	10
CONDITION	10

 100



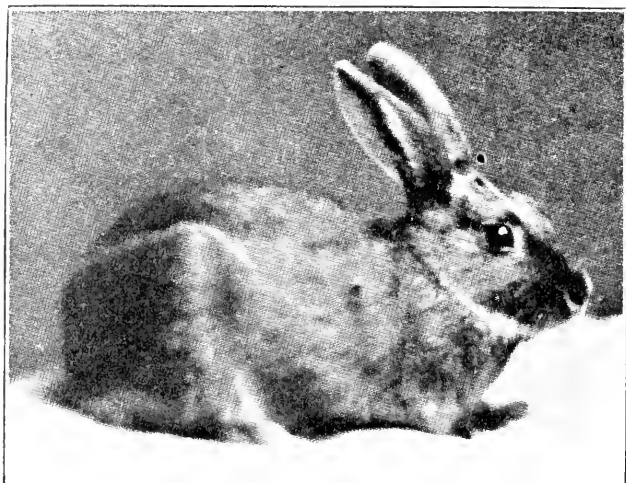
POLISH

EYES	Large, bright, bold and as near blood red as possible	15
EARS	Short, fine, well rounded, to touch each other all the way up without showing flange. Head fur to cover base of ears if possible.....	15
COAT	Fine short and close with silky gloss.....	25
COLOR	Pure snow white	15
SHAPE	Neat, compact and sprightly	15
SIZE	Three to four pounds	10
CONDITION	Cleanliness, healthy condition.....	05



SILVER GREY, FAWN OR BROWN

EYES	Bold and bright	05
EARS	Small, neat and erect	05
COAT	Thick, short and even length	10
SHAPE	Neat, plump with a good loin	10
SIZE	About six pounds	05
COLOR	Under color, in greys a rich deep blue black, in fawns, a bright orange, in browns, a deep rich chestnut	25
	Silvering, eveness throughout the entire body	20
	Ticking, distinct, sharp and bright, evenly distributed	15
CONDITION	Compact, healthy appearance	05

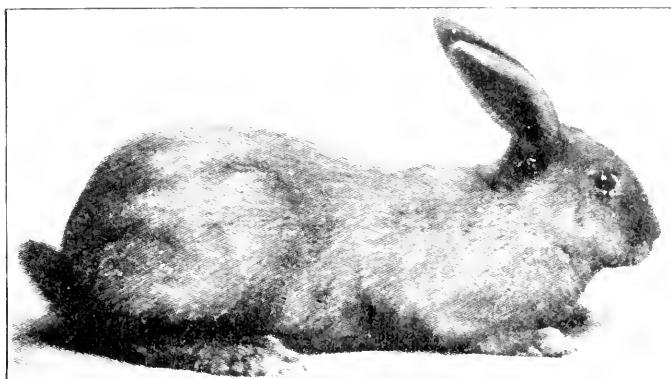


TANS—BLACK OR BLUE

EYES	Large and bright, hazel in black, blue in blue	05
EARS	Short, color to match back	10
SHAPE	To resemble the Dutch	05
SIZE	About four pounds	05
COLOR	Black or blue, dense even color	10
	Tan-Deep rich golden color	15

DISTRIBUTION OF TAN

Triangle (just back of the ears)	05	
Fore feet	05	
Hind feet	10	
Chest, flank and belly	10	
Nostrils, eyes and jowls	05	
Ears, outer and inner margins	05	
CONDITION	Compact, healthy appearance	10



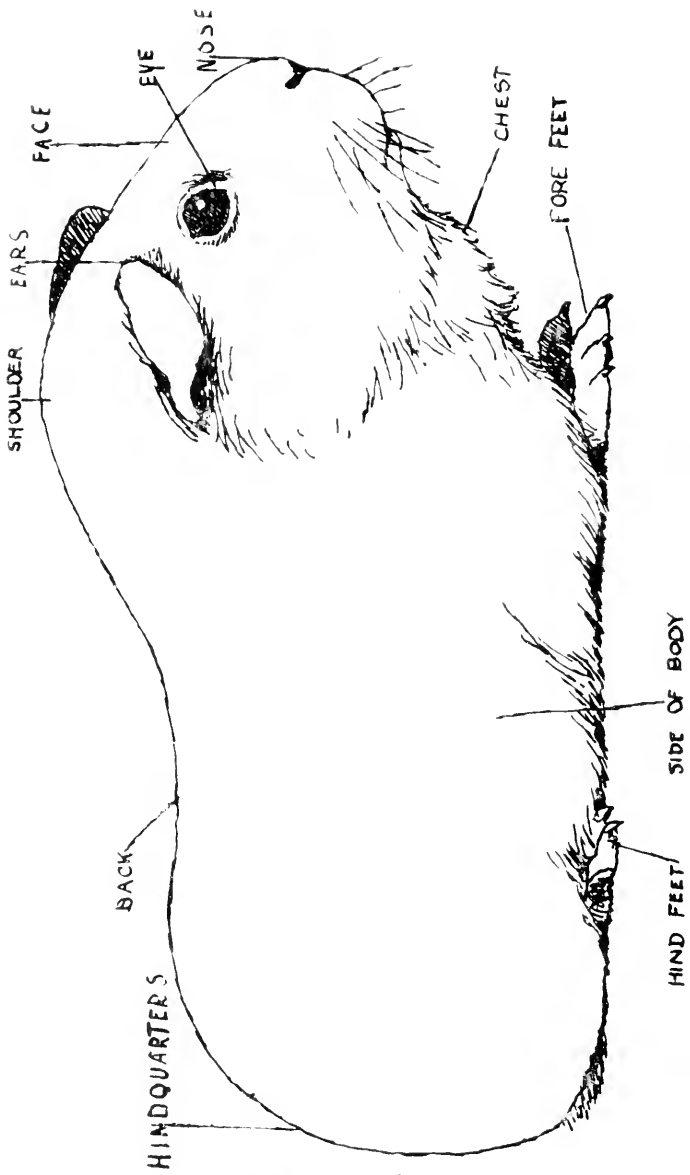
VIENNA BLUE

(German Standard)

COLOR	A dark steel blue throughout the entire specimen, eyes to match, avoid white stray hairs	40
FUR	Thick and medium long with good even gloss	20
SHAPE	Not as long as the Flemish but more upright and shapely with fine narrow head...	10
WEIGHT	To be about ten pounds	10
EARS	Shapely, not long like the Flemish	10
CONDITION	10

100

This variety is also bred in pure white, which should be judged by the above standard, both kinds being grown in Germany for meat and the hides which are used in making furs.



IDEAL CAVY

Showing Shape
and Location of
Points



ABYSSINIAN CAVY

(Solid or Self Colors)

ROSETTES	To have as many rosettes in the fur as possible	25
COAT	To be rough and wiry	20
COLOR	Even throughout, not blending	15
SHAPE	Broad over the loins	10
SIZE	Large throughout body	10
HEAD FURNISHINGS	Head well covered	15
CONDITION	05

100

STANDARD FOR BROKEN COLORS

ROSETTES	30
COAT	25
SHAPE	10
HEAD FURNISHINGS	20
SIZE	10
CONDITION	05

100

Abyssinians should be large throughout, and broad at the shoulders, the hair rough, wiry, and in as many rosettes as possible; the head well furnished with hair, which must in no part exceed one and one-half inches in length.



ENGLISH SELFS

COLOR	Solid even color throughout entire body, good luster, free from odd color hairs	30
SHAPE	Head and shoulders broad and heavy, nose Roman not pointed or ratty in appear- ance	20
COAT	Smooth and close without corrugations....	10
EYES	Large as possible and bold	10
EARS	Drooping nature but not fallen	10
SIZE	Large, well proportioned	10
CONDITION	10

100

The above standard applies to solid Black, Cream, Chocolate, Blue, Red and White.

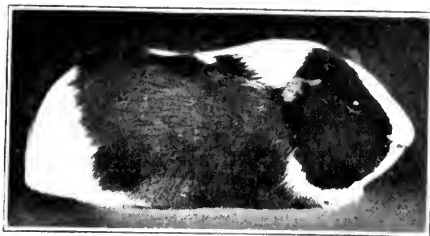
The color must be solid carried down to the roots of the hair. The ears and feet in all varieties must match the body.

DUTCH MARKED CAVY

This variety uses the same standard and the markings take the same position as the Dutch Marked Rabbit. (See page 4.)

HIMALAYAN CAVY

Use Standard and Marking of Himalayan Rabbit (See Page 10.)



TORTOISE AND WHITE CAVY

PATCHES	Clean, clear cut and distinct.....	25
	Equal distribution with uniform placing of the patches	10
COLOR	Black, red and white, even color throughout each patch without blending	20
SHAPE	Head and shoulders broad and heavy, nose Roman not pointed or ratty in appear- ance	15
EYES	Large as possible and bold	05
EARS	Drooping but not fallen	05
SIZE	Large well proportioned	10
COAT	Smooth and close without corrugations....	05
CONDITION	05
		<hr/> 100

The colors should be black, red and white, equally distributed and in as small patches as possible, each color clear and distinct, without being intermixed one with another. The ears may be one, two or all three colors. This standard also applies to the other tricolors.

TORTOISE SHELLS

PATCHES	Clear and distinct	45
EYES	Large and bold	10
COAT	10
SHAPE, SIZE AND CONDITION	20
COLOR	Black and Red	15
		<hr/> 100

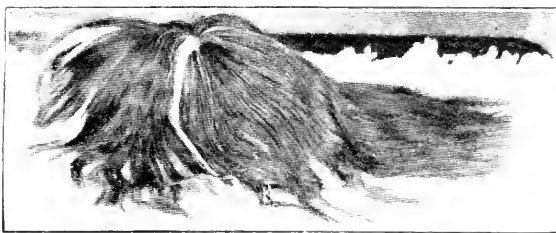
The colors should be black and red, equally distributed in distinct patches, the smaller and more uniform the better.

AGOUTI COLORED CAVY GOLDEN AND SILVER GREY

COLOR	There are two shades. The golden should be rich golden brown undercolor with even ticking throughout, belly color should be deep red. The grey should be a light shade with even ticking, belly should be of a silver hue, free from any sign of golden or bronze tint, feet to match body in both colors	20
TICKING	Guard hairs that are tipped with black making even over color throughout	25
EYES	Large as possible and bold	10
SIZE	Large, well proportioned	10
SHAPE	Head and shoulders broad and heavy, nose Roman, not pointed or ratty in appearance	20
COAT	Smooth and close without corrugations....	10
CONDITION	05
		100

BRINDLE COLOR CAVY

COLOR	Black and Red evenly intermixed all over the body, feet, etc., colors equal in proportion	60
EYES	Large as possible and bold	10
SIZE	Large, well proportioned	10
SHAPE	Head and shoulders broad and heavy, nose Roman, not pointed or ratty in appearance	20
COAT	Smooth and close without corrugations	
CONDITION	20
		100



PERUVIAN CAVY

(Self or Solid Color)

LENGTH OF COAT	20
HEADFURNISHINGS Should fall down on each side and cover the head from view.....	20
MANE AND SIDES	20
TEXTURE And density of the coat	20
COLOR Even throughout with good gloss	10
CONDITION AND SIZE	10

100

STANDARD FOR BROKEN COLORS

LENGTH OF COAT	25
HEAD FURNISHINGS	25
MANE AND SIDES	25
TEXTURE And density of coat	20
CONDITION AND SIZE	05

100

PERUVIAN SILKY CAVY

Pseudo Angora—Solid and Broken Colors

LENGTH OF COAT	25
TEXTURE AND DENSITY	25
EARS	10
FACE AND HEAD	20
EYES	10
SIZE AND CONDITION	10

100

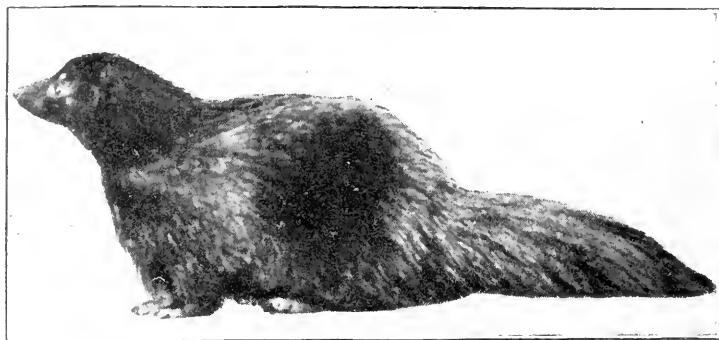
The size and shape of this variety is akin to that of the English Cavy only that the fur is, with the exception of the head, long and silky.



STANDARD FOR MICE N. P. S. A.	SELS EVEN MARKED AND VARIGATED BROKEN MARKED DUTCH MARKED AGOUTI, SABLES CINNAMON, BROWN, BLACK, BLUE, TAN AND CHOCOLATE. SILVER GREYS, BROWNS & FAWNS TRI-COLORED
COLOUR	50- . -35- -30-20
CHEEK BLAZE & COLOR	-20-
MARKINGS	-50 - 50- -30
SADDLE	-15-
SHAPE AND CARRIAGE	10-10 - 10-10-10- -10-10
SIZE	5 - 5 - 5 - 5 - 5 - -5 - 5
UNDERCUT & STOPS	-15-
EARS SHAPE SIZE	5 - 5 - 5 - 5 - 5 - -5 - 5
TICKING	-15-20
EYES LARGE AND BOLD	5 - 5 - 5 - 5 - 5 - -5 - 5
MUZZLE LONG	5 - 5 - 5 - 5 - 5 - -5 - 5
TAIL LONG NO KINKS & TAPERING	5 - 5 - 5 - 5 - 5 - -5 - 5
CONDITION NOT FAT, SHORT THICK GLOSSY COAT	15-15 - 15-15-15- -15-15
TOTAL	One hundred

**STANDARD
FOR RATS
N. P. S. A.**

	BLACKS OR BLUES	WHITES FAWNS & CREAMS	AGOUTI	IRISH AGOUTI	IRISH BLACK. FAWN	JAPANESE	EVEN MARKED	BROKEN MARKED	SILVER, GREY FAWN
COLOR	40-45-		30-35-	25-	25-	25-	25-	25-	25-
TOP COLOR			20						
TICKING			15-5-					20	
FEET, SOUND IN COLOR	10- 5 -		-5- 5					5	
UNDER BELLY COLOR RUDDY BROWN			15						
SHAPE AND CARRIAGE	10-10-	10-	10-	10-	10-	10-	10-	10-	10-
SIZE	5- 5-	5	-5	-5	-5	-5	-5	-5	-5
EYES, LARGE BOLD AND PROMINENT	5- 5-	5-	5-	5-	5-	5-	5-	5-	5-
EARS; SHAPE SIZE, POSITION	5- 5-	5-	5-	5-	5-	5-	5-	5-	5-
HEAD, LONG & NOT TOO POINTED	5- 5-	5-	5-	5-	5-	5-	5-	5-	5-
TAIL, LONG & UNIFORM, NO KINKS	5. 5-	5-	5-	5-	5-	5-	5-	5-	5-
TRIANGLE			10-10-						
HOOD AND SADDLE						25			
HEAD MARKINGS CLEARNESS NO SPOTS							25-25		
CONDITION NOT FAT short sleek glossy coat	15-15-	15-	15-	15-	15-	15-	15-	15-	15-
	One hundred								



SKUNKS

Standard Points for Exhibition

COLOR	Darkness—rich jet black throughout the entire head, body and tail as near as possible (very few absolute black exist)	35
LUSTER	Good, bright, shiny gloss on the long or guard hair	20
FUR	Length—as long as possible especially on the back	10
TEXTURE	The long hairs to be soft and flexible and not wiry bristles	10
	Density of the fur	10
SIZE	Largest size possible	10
CONDITION	Showing good health and care.....	05

 100

STRIPED SKUNKS

The standard to be same as above except first paragraph which should be as follows:

Star on head as round as possible covering top of head. Stripes running from star to end of body, even one inch wide throughout. Tail, about three inches of white on tip. Markings to be pure white without yellow tints, rest solid black.

SHOW RULES

Application to hold show under National Pet Stock Association Rules must be made in writing at least thirty days before show, also guaranteeing that the rules will be faithfully observed. Sanction for clubs or associations to use these rules may be granted by the Secretary of N. P. S. A. with consent of board.

All entries must be made in the name of the owner, owners or corporation.

An experienced Pet Stock man must be in charge at all times during the show as handler and care for the stock.

No stock shall be handled by any one except Judge, Owner or Handler.

All entries must be absolutely the property of the exhibitor also to have been owned by him 60 days prior to date.

A junior rabbit must be under six months of age; a junior Cavy must be under four months of age.

No Judge shall compete in a class where his decision is to be given, nor shall he pass judgment on stock that he recognizes as having been in his possession during the previous year.

Show managements shall refuse to receive diseased animals and see that they are not kept in show room.

In case of apparent error in awards exhibitor may enter protest provided they deposit at least \$3.00 with written protest with secretary of show who shall take it up with management. If not sustained the money and protest must be forwarded to the Secretary of the National Pet Stock Association and referred to the board for final action. If protest is sustained the money will be returned, if not it will be retained.

Instructions for Premium Lists and Show Committees. Not necessary to be printed.

All pet stock must be judged by a National Pet Stock Association licensed judge.

A true copy of all awards must be sent to the Secretary of the National Pet Stock Association without delay.

The show management must see that proper food is placed in the shipping crates for the stock on their return trip.

Entries shall close on the day and the hour advertised.

Judging shall begin promptly at the hour advertised unless in exceptional instances.

Any person guilty of fraudulent practice must be reported by the Judge and disqualified by the Association; any person so disqualified is not entitled to exhibit at any of the sanctioned shows or act in any capacity.

Premium Lists must state if prizes are open to the world or just to specified Association members.

Judging to be done by comparison method.

The price of the entry fee to be printed in heading of Pet Stock Department.

Premium lists should contain announcements of all pet stock meetings during show, if none, they should set a Pet Stock Day, preferably the third day of the show.

CLASSIFICATIONS

Admitted Standard Varieties

For premium lists, use the breeds first then include as many varieties as desired.

Four classes may be allowed for each breed and for each variety if desired; they are adult male, adult female, Junior male and Junior female, a class of a mother and young may be added, but is not recommended and they must not be allowed to count in points towards a sweepstake or best display prize.

RABBITS

BREEDS	VARIETIES
ANGORA	{ White Black Blue Broken Colors
BELGIAN HARE	
DUTCH	{ Black Blue A. O. C.
ENGLISH	{ Black Blue A. O. C.
FLEMISH GIANT (dark steel only)	
GERMAN CHECKERED GIANT	
GIANT RABBIT SOLID COLOR	
HAVANA	
HIMALAYAN	
IMPERIAL	
JAPANESE	
LOP EARED RABBIT	
POLISH	
SILVER	{ Grey Fawn Brown
TAN	{ Black Blue
VIENNA BLUE	

Junior Stock Must Be Under Six Months.

CAVIES

BREEDS

VARIETIES

ABYSSINIAN	}	Black Red Cream White A. O. C. Broken Color
ENGLISH SMOOTH	}	Black Blue Cream Chocolate Red White Agouti Silver Golden Brindles Hamalayan Tortoiseshell Tortoiseshell and White Dutch marked Red Black A. O. C. A. O. C.
PERUVIAN	}	Red Black White Cream Broken color A. O. C.
PERUVIAN SILKEYES PSEUDO ANGORA	}	Red Black White Broken color A. O. C.

Junior Stock to Be Under Four Months.

FUR BEARING ANIMALS

SKUNKS	}	Solid White Solid Black Even Stripes
--------------	---	--

Other fur bearing animals should be encouraged by making classes for them at the shows.

GENERAL DISQUALIFICATION

Lopped ear in any variety except lop eared rabbits.

Screw tail, or tail that has deformed bone or is firmly set to one side. This does not mean a lopped tail or one that falls slightly to one side then resumes its natural position, lopped tail should be penalized but not disqualified.

Crooked feet, Bowed legs, Knocked knees, or deformed in any way.

Over-age specimens entered in junior class.
Rabbits over 6 mo., covies over 4 mo.

Off color spots, such as spot of white in black where it should be solid, off colored or stray hairs should count against, but not disqualify, unless there are enough in one place to make a distinct spot.

Over weight specimens in small breeds.

Eyes not matching each other.

Eyes not matching body or other than color called for.

Faking, such as plucking, dyeing, trimming, or Castration or spaying.

evidence of using foreign substance on coat.

Absence of important color spots.

Torn ears, if there is a portion missing or large slit one inch or more the specimen should be disqualified, if slit should be penalized. according to size.

Specimens not owned by exhibitor.



The National Pet Stock Association of America

An Association for the Betterment and
Improvement of all Pet Animals

"United We Stand, Divided We Fall."

The following is a list of our officers for the year 1915, all of whom have helped to produce these Standards.

President	- - -	ROY C. KNILL, Chicago, Ill.
1st. Vice President	-	J. M. GIBSON, W, Alex. Pa.
2nd. Vice President	-	G. W. AKIN, Denver, Colo.
Treasurer	- -	GEO. C. ECKERT, Chicago, Ill.
Secretary	-	CHAS. S. GIBSON, Detroit, Mich.

BOARD OF DIRECTORS

Wm. A. BLUMHAGEN,	- - -	Chicago, Ill.
MURRAY N. DONALD,	- -	Morristown, N.Y.
T. P. KEENEY,	- - -	Portland, Oregon
Wm. I. LYON ,	- - - -	Waukegan, Ill.
W. E. MacKAY	-	Newton Brook, Ont., Canada
C. J. PAGE	- - - -	Salina, Kansas
Wm. WENKHOUS	- - -	Beaver Falls, Pa.

Note:-

The color of the cover of this book or a shade lighter was selected as the official color of the N.P. S. A. so that all members could paint their shipping coops the same color and they would be recognized at once as pet stock carriers which would be a help to Superintendents of shows when separating them from poultry, etc. and would give our stock better attention.

A number of our members are engaged in the railway service and they would readily recognize the coops and see that they get the best of attention.

It is also recommended that members paint on their coops "Return to (name and address) member of N. P. S. A."

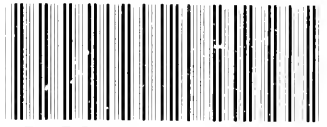
It is also recommended that you paint Hutches and Houses the same color so your place may be easily recognized from the road, street cars, or train.

This is an economical color as it can be produced with white lead and oil, adding a very little lamp black until you get the right shade.

Wm. I. Lyon, Past President.

Waukegan, Illinois

LIBRARY OF CONGRESS



0 002 845 741 8

LIBRARY OF CONGRESS



0 002 845 741 8