

20

CATALOGUE
NUMBER
SEVENTEEN

GAS AND ELECTRIC FIXTURE
SUPPLIES



THE CLEVELAND
GAS & ELECTRIC
FIXTURE CO. 
CLEVELAND OHIO 

Office and Salesrooms, Rose Building
Factory, 74-82 Seneca Street

DISCOUNT SHEET.

Brackets, Staple, - - -	page 2, 3, - - -	70%
Burners, - - -	" 13, 14, 15, - - -	net.
Chimneys, Macbeth, -	" 15, - - -	"
Fittings, Staple, - -	" 4, 5, 6, - - -	70 and 10%
Hubbell Sockets, - -	" 20, - - -	net.
Incandescent Lamps, -	" 21, - - -	"
Jem Holders, - - -	" 19, - - -	"
Mantles, - - -	" 16, - - -	"
Socket, Weather Proof, -	" 21, - - -	"
All other goods, - - -	- - - - -	40 and 5%

Terms 2% ten days, net thirty days, f. o. b. factory, except charge
for packages.

THE CLEVELAND GAS AND ELECTRIC FIXTURE CO.

Cleveland, O., March 1, 1904.

Catalogue Number Seventeen

Illustrating

SUPPLIES *for* GAS, ELECTRIC & COMBINATION FIXTURES

AND MISCELLANEOUS GOODS

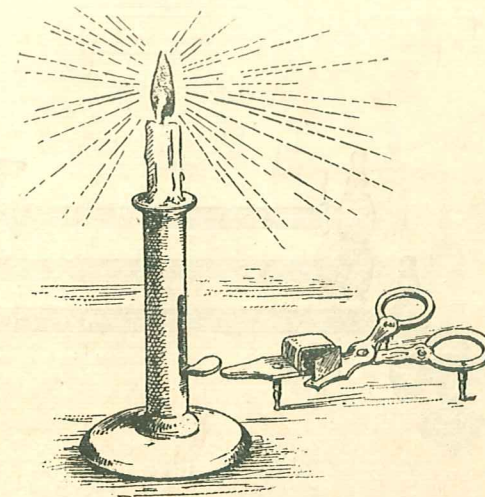


PRICES—All previous quotations are superseded by the prices herein quoted.

TERMS—Our terms are net thirty days or two per cent cash in ten days from date of shipment, except for electric sockets and brass casing which are thirty days net, or one per cent cash in ten days.

DELIVERY—We deliver F. O. B. Cleveland, and assume no further responsibility when goods are received for in good order by the transportation company.

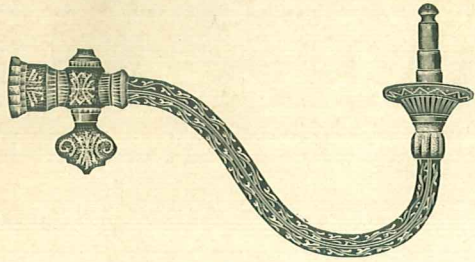
PACKAGES will be charged for at cost.



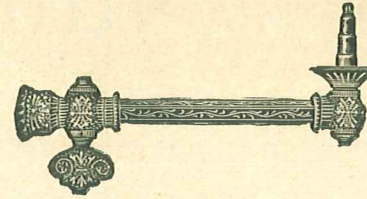
The Cleveland Gas and Electric Fixture Company,

CLEVELAND, OHIO

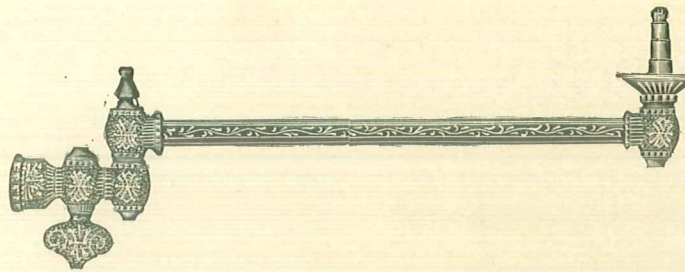
STAPLE GAS BRACKETS



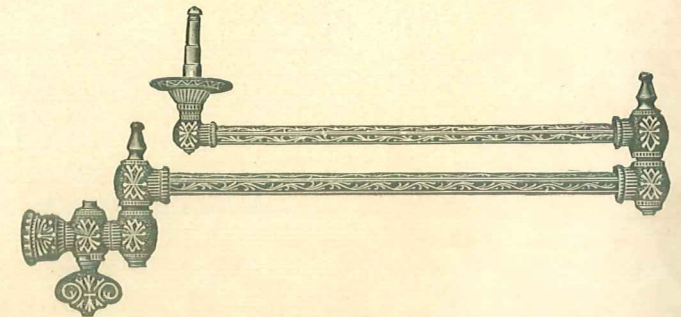
No. 99



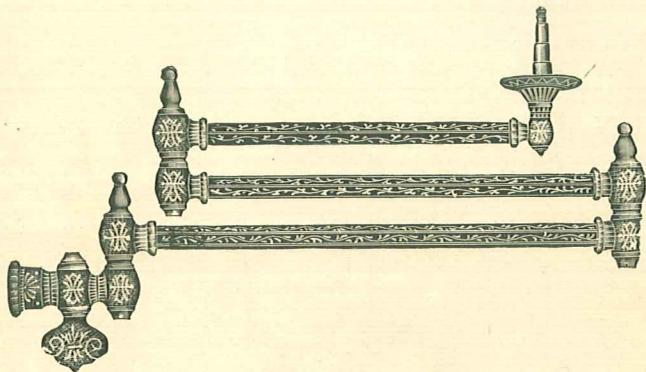
No. 100



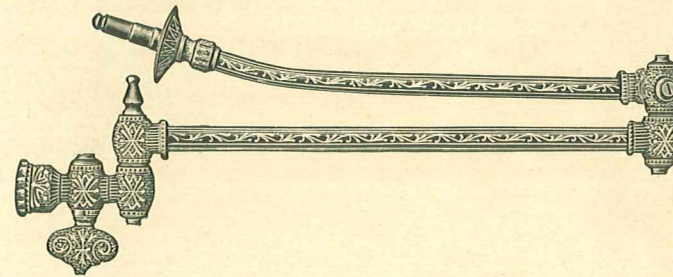
No. 101



No. 102



No. 103



No. 104

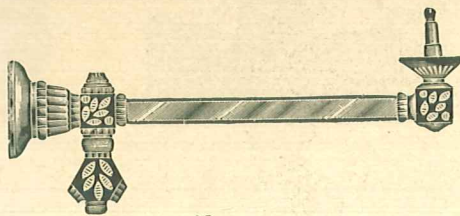
No. 99.	Stiff Curve, Gilt Finish,	- - -	each,	\$0.75
No. 99½.	Swing " " " "	- - -	"	.95
No. 100.	Stiff " " " "	- - -	"	.65
No. 101.	One Swing, " " " "	- - -	"	.85
No. 102.	Two " " " "	- - -	"	1.30

No. 103.	Three Swing, Gilt Finish,	- - -	each,	\$1.85
No. 103½.	One " Universal, Gilt Finish,	- " "	"	1.35
No. 104.	Two " " " " "	- " "	"	1.85
No. 105.	Three " " " " "	- " "	"	2.35
No. 139.	Swing Rope Curve,	- - -	"	1.00

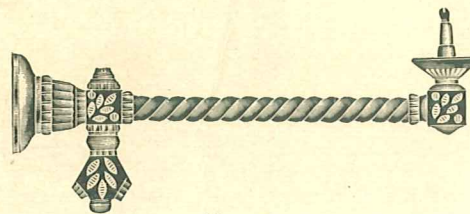
No. 139½.	Stiff Rope Curve, Gilt Finish,		each,	\$0.80
No. 140.	Stiff " " " "		"	0.70
No. 141.	One Swing Rope, " " " "		"	0.90
No. 142.	Two " " " " "		"	1.40
No. 143.	Three " " " " "		"	1.95

Prices Include Back, Cup, Pillar and Tip

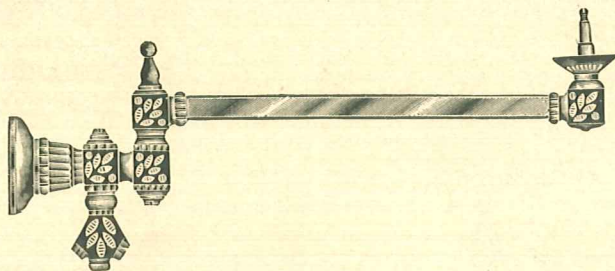
STAPLE GAS BRACKETS.



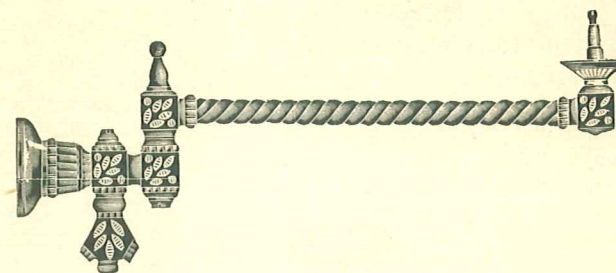
No. 120



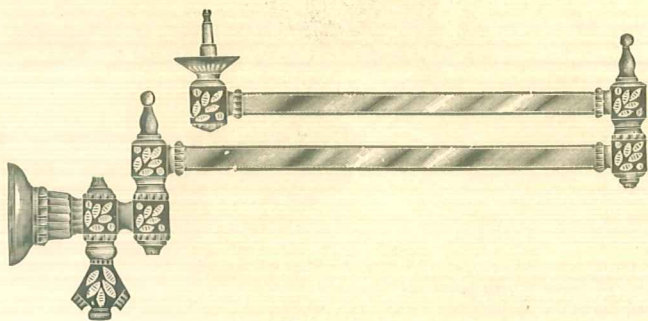
No. 110



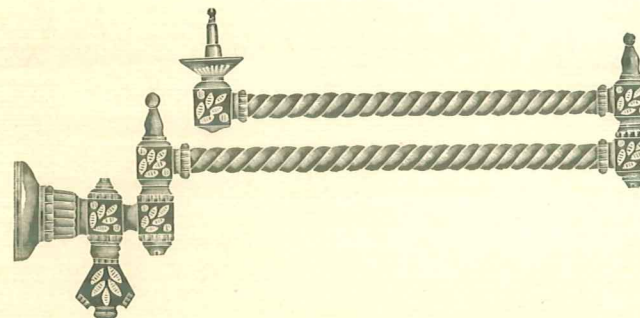
No. 121



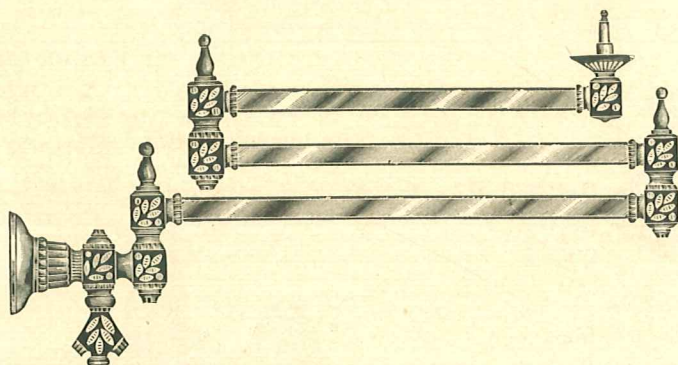
No. 111



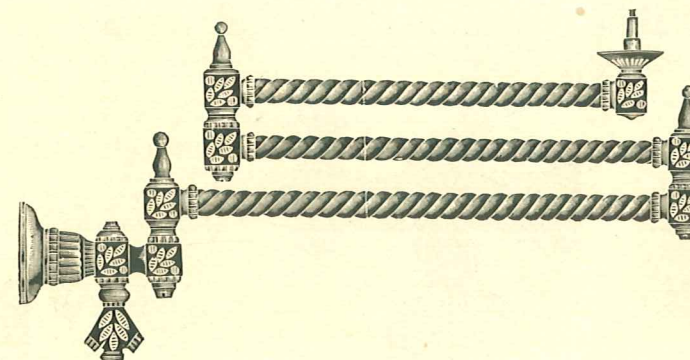
No. 122



No. 112



No. 123



No. 113

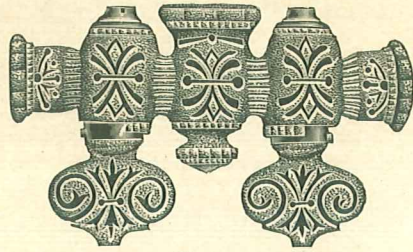
No. 110. Stiff Curve Square, Polished Brass, - each, \$1.15
 No. 119½. Swing, " " " " " 1.75
 No. 120. Stiff, " " " " " 0.95
 No. 121. One Swing, " " " " " 1.50

No. 122. Two Swing Square Polished Brass, - each, \$2.10
 No. 123. Three " " " " " 2.75
 No. 109. Stiff Curve Rope, " " " " 0.95
 No. 109½. Swing " " " " " 1.15

No. 110. Stiff Rope, Polished Brass, - - each, \$0.90
 No. 111. One Swing Rope, Polished Brass, - " 1.10
 No. 112. Two " " " " " 1.75
 No. 113. Three " " " " " 2.75

Prices Include Back, Cup, Pillar and Tip.

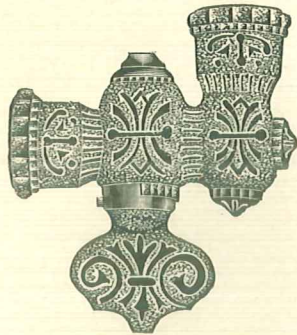
STAPLE GAS FIXTURE FITTINGS



No. 150

TWO-LIGHT PENDANT COCKS

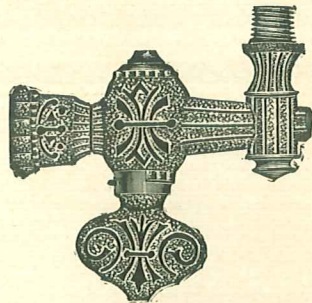
$\frac{3}{8}$ iron to $\frac{3}{8}$ iron, per dozen.....	\$10.25
$\frac{3}{8}$ iron to $\frac{1}{4}$ iron, "	9.10
$\frac{3}{8}$ iron to $\frac{1}{8}$ iron, "	9.10
$\frac{1}{4}$ iron to $\frac{1}{4}$ iron, "	9.10
$\frac{1}{4}$ iron to $\frac{1}{8}$ iron, "	8.45



No. 151

L PENDANT COCKS

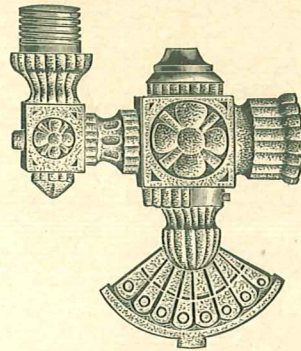
$\frac{3}{8}$ iron to $\frac{1}{4}$ iron, per Dozen.....	\$5.20
$\frac{3}{8}$ iron to $\frac{1}{8}$ iron, "	5.20
$\frac{1}{4}$ iron to $\frac{1}{4}$ iron, "	5.20
$\frac{1}{4}$ iron to $\frac{1}{8}$ iron, "	4.90



No. 152

L BURNER COCKS

$\frac{1}{2}$ iron to Burner, per Dozen.....	\$6.20
$\frac{3}{8}$ iron to Burner, "	5.20
$\frac{1}{4}$ iron to Burner, "	4.55
$\frac{1}{8}$ iron to Burner, "	4.25



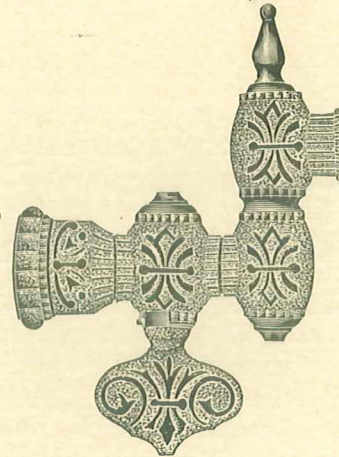
No. 153

FANCY L BURNER COCKS

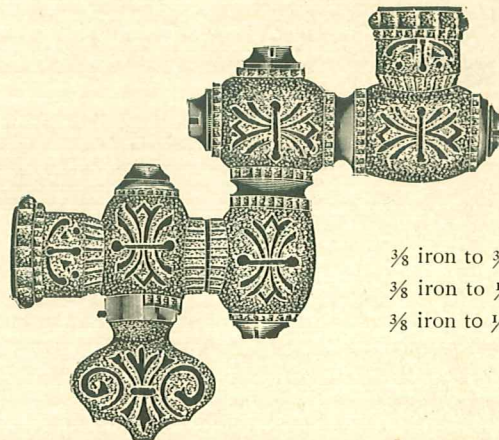
$\frac{1}{8}$ iron to Burner, per Dozen....	\$4.25
$\frac{5}{16}$ brass to Burner, "	4.25

BRACKET SWING COCKS

$\frac{3}{8}$ iron to $\frac{3}{8}$ iron, per Doz....	\$0.10
$\frac{3}{8}$ iron to $\frac{1}{4}$ iron, "	8.45
$\frac{3}{8}$ iron to $\frac{1}{8}$ iron, "	8.15



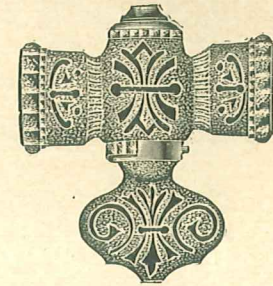
No. 154



No. 155

UNIVERSAL BRACKET COCKS

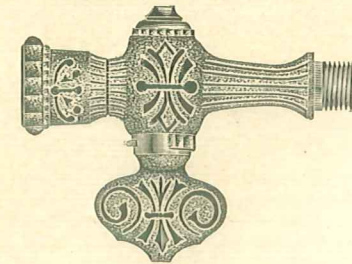
DOZEN	
$\frac{3}{8}$ iron to $\frac{3}{8}$ iron	\$13.00
$\frac{3}{8}$ iron to $\frac{1}{4}$ iron	12.35
$\frac{3}{8}$ iron to $\frac{1}{8}$ iron	12.05



No. 156

STRAIGHT COCKS

$\frac{1}{2}$ iron to $\frac{1}{2}$ iron, per Dozen	\$6.20
$\frac{3}{8}$ iron to $\frac{3}{8}$ iron, "	4.90
$\frac{3}{8}$ iron to $\frac{1}{4}$ iron, "	4.55
$\frac{1}{4}$ iron to $\frac{1}{4}$ iron, "	4.55
$\frac{1}{4}$ iron to $\frac{1}{8}$ iron, "	4.25
$\frac{1}{8}$ iron to $\frac{1}{8}$ iron, "	3.90
$\frac{5}{16}$ brass to $\frac{5}{16}$ brass, "	3.90



No. 157

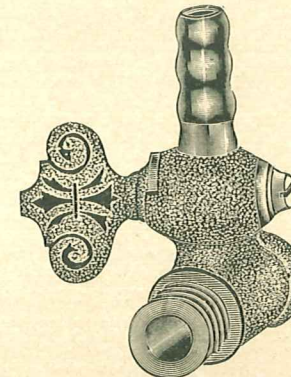
PILLAR COCKS (Female)

$\frac{3}{4}$ iron to Burner, per Dozen.....	\$6.50
$\frac{1}{2}$ iron to Burner, "	5.20
$\frac{3}{8}$ iron to Burner, "	4.55
$\frac{1}{4}$ iron to Burner, "	4.25
$\frac{1}{8}$ iron to Burner, "	3.90

PILLAR COCKS (Male)

No. 158

$\frac{3}{8}$ iron to Burner, per Dozen.....	\$5.55
$\frac{1}{4}$ iron to Burner, "	5.20
$\frac{1}{8}$ iron to Burner, "	4.90



No. 159

INDEPENDENT COCKS

DOZEN	
$\frac{3}{8}$ iron for Rubber Tube.....	\$6.50
$\frac{3}{8}$ iron for Brass Pillar.....	6.50
$\frac{3}{8}$ Extra Heavy for Rubber Tube	7.50

STAPLE GAS FIXTURE FITTINGS

HOSE PILLAR COCKS

(Female)

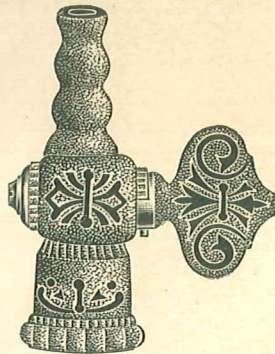
No. 160

½ iron to Hose End, per dozen.	\$5.20
¾ iron to Hose End, “	4.90
¼ iron to Hose End, “	4.55
⅓ iron to Hose End, “	4.25

(Male)

No. 161

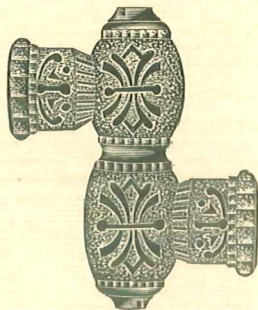
¾ iron to Hose End, per dozen.	\$5.20
¼ iron to Hose End, “	4.90
⅓ iron to Hose End, “	4.55



TOP SWINGS

No. 162

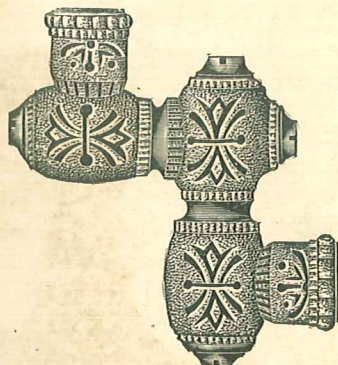
½ iron to ½ iron, per dozen...	\$9.00
½ iron to ¾ iron “	7.50
¾ iron to ¾ iron “	6.20
¾ iron to ¼ iron “	5.55
¾ iron to ⅓ iron “	5.20
¾ iron to ½ brass “	5.55
¾ iron to ⅓ brass “	5.55



MIDDLE SWINGS

No. 163

¼ iron to ¼ iron, per dozen.....	\$4.90
¼ iron to ⅓ iron, “	4.55
⅓ iron to ⅓ iron, “	4.25



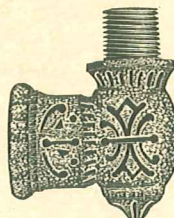
No. 164

UNIVERSAL SWINGS

¾ iron to ¾ iron, per doz.	\$9.10
¾ iron to ¼ iron, “	8.80
¼ iron to ¼ iron, “	8.45
¼ iron to ⅓ iron, “	8.15
⅓ iron to ⅓ iron, “	7.80

SIDE NOZZLES

¾ iron to Burner, per dozen.....	\$2.30
¼ iron to Burner, “	1.65
⅓ iron to Burner, “	1.00
⅓ brass to Burner, “	1.00



No. 165

STRAIGHT NOZZLES

¾ iron to Burner, per dozen	\$2.20
¼ iron to Burner, “	1.65
⅓ iron to Burner, “	1.00
⅓ brass to Burner, “	1.00



No. 166

HOSE ENDS OR NIPPLES.

No. 167

¾ iron, per dozen.....	\$3.25
¼ iron, “	2.95
⅓ iron, “	2.60

HOSE ENDS OR NIPPLES.

(Male)

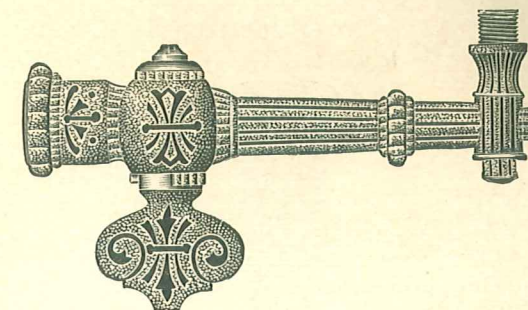
No. 168

¾ iron, per dozen	\$3.50
¼ iron, “	3.20
⅓ iron, “	2.85

PORTABLE COCKS.

No. 169

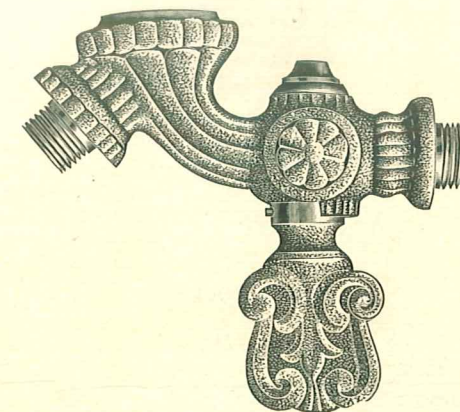
⅞ x ⅓ brass x ¼ No. 20 thread iron, per dozen.....	\$9.00
--	--------



No. 170

LONG L BURNER COCKS, 4 ½ INCHES

¾ iron to Burner, per dozen	\$8.45
¼ iron to Burner, “	8.45



No. 171

COMBINATION FITTINGS

¼ iron to Burner, per dozen	\$9.60
⅓ iron to Burner, “	9.00

STAPLE GAS FIXTURE FITTINGS

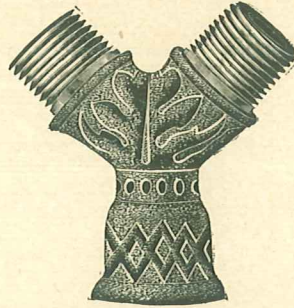
STIFF JOINTS



No. 172

½ iron to ½ iron, per dozen	\$3.25
½ iron to ¾ iron, "	2.60
½ iron to ¼ iron, "	2.60
¾ iron to ¾ iron, "	1.95
¾ iron to ¼ iron, "	1.85
¾ iron to ⅝ iron, "	1.55
¾ iron to ⅝ brass, "	1.95
¾ iron to ½ brass, "	1.85
¾ iron to ⅞ brass, "	1.85
¼ iron to ¼ iron, "	1.55
¼ iron to ⅝ iron, "	1.50
⅝ iron to ⅝ iron, "	1.30

DOUBLE BODIES OR BRACKET Y'S



No. 176

For Two Brackets (common), per dozen \$3.90
 For Two Pillars (common), " 5.20

CONNECTING BALLS



No. 177

½ iron to ½ iron, per dozen	\$2.60
¾ iron to ¾ iron, "	1.50
⅝ brass to ⅝ brass, "	1.50
⅞ brass to ⅞ brass, "	1.50
½ brass to ½ brass, "	1.30
⅞ brass to ⅞ brass, "	1.30
¾ brass to ¾ brass, "	1.00
⅝ brass to ⅝ brass, "	1.00

LENGTHENING PIECE



No. 173

¾ iron to ¾ iron, per dozen	\$1.95
-----------------------------------	--------

HARP COCKS

No. 174

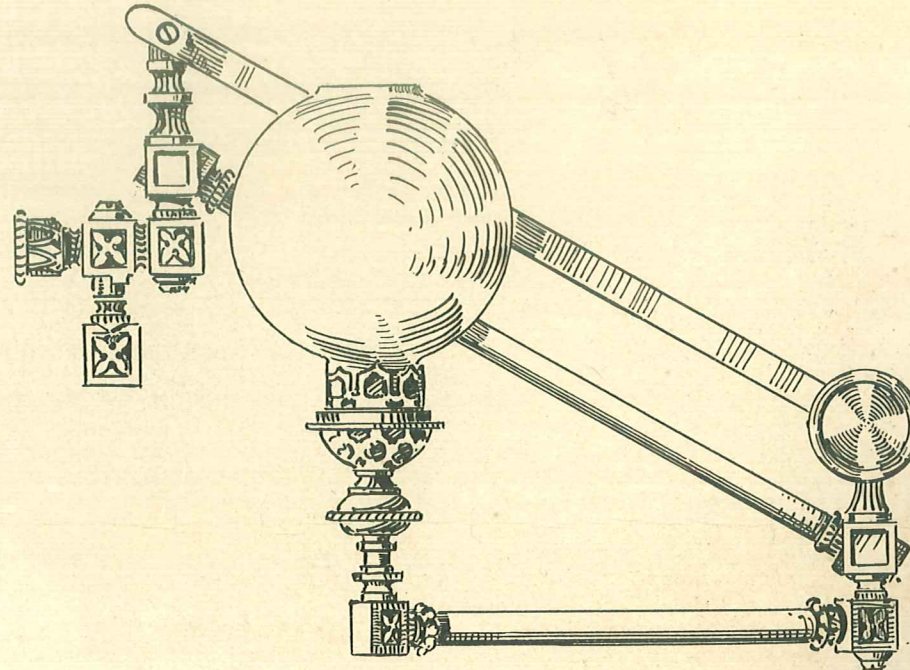
¾ brass to ¾ brass, per dozen	\$5.85
¼ iron to ¼ iron, "	7.15

HARP TOPS

No. 175

¾ brass to ¾ brass, per dozen	\$3.25
¼ iron to ¼ iron, "	4.55

SURGICAL BRACKET.



No. 209

Parallel Oculist or Surgical Bracket

1 Gas Light, 2 Swing, each \$6.00

GAS TIPS AND BURNERS

BEAUTIFUL GAS LIGHT
FROM BRILLIANT ALUMINUM GAS TIP BURNERS.
(Patented January 2, 1900.)

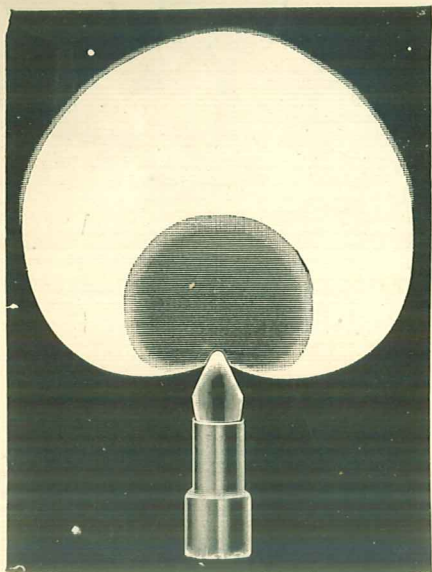


Fig. 201

Be sure every tip is stamped "Patented"
All others are infringements

Tips are made to consume, 2, 3, 4, 5, and 6 cubic feet of gas per hour

Complete as shown with pillar, per Gross \$5.50
Tips only, per Gross 3.50

JUMBO BURNER

40 TO 80 CANDLE POWER



Fig. 203

Per Dozen \$ 1.25
Per Gross 12.50

Jumbo Tip

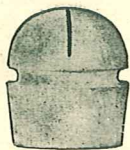


Fig. 202

Per Dozen \$0.75
Per Gross 7.50

Jumbo Pillars



No. 199

Per Dozen \$0.50
Per Gross 5.00

Excavated Head

Lava



Fig. 204

Per Dozen \$0.15
Per Gross 1.30

Steward Burners



Fig. 205

Per Gross \$10.00

Brilliant Aluminum Tip



PAT. JAN. 2, 1900

Fig. 200

Per Dozen \$0.35
Per Gross 3.50
5 Gross lots
at 3.00

BRASS PILLARS

For Lava or Scotch Tips



Fig. 208

Per Dozen \$0.15
Per Gross 1.50

Bray Tip



Fig. 207

Per Dozen \$0.40
Per Gross 4.00

COMET BURNER INSERTED LAVA TIP

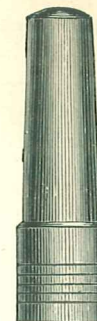


Fig. 210

Per Dozen \$0.40
Per Gross 4.00

THE EMPIRE BURNER

WITH LAVA TIP



Fig. 211

Per Dozen \$1.00
Per Gross 9.00

Scotch Fish Tail

Iron



Fig. 205

Per Dozen \$0.25
Per Gross 2.50

GAS BURNERS

MONITOR HEATING BURNER

(Patented June 7, 1887.)

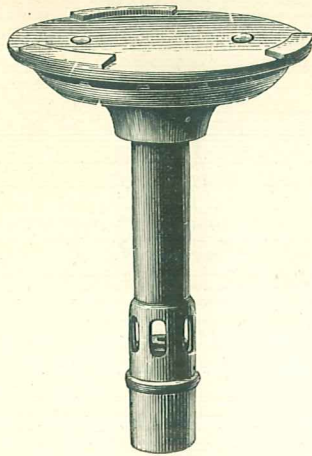


Fig. 212

EXTRA HEAVY SHEET STEEL TOP AND BRASS STEM

No. 1.	2 1/8 inch top, 3 inches high, per Dozen	\$3.00
No. 2.	3 1/4 " " 3 1/4 " " "	7 00

MONITOR BURNER STANDS

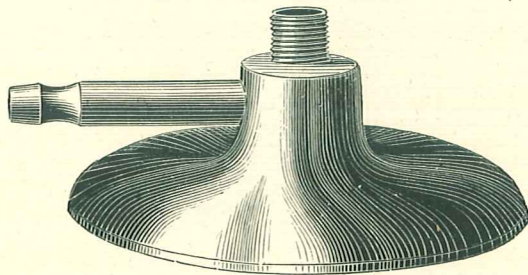


Fig. 213

No. 1.	3 1/2 inches diameter, per Dozen	\$3.00
No. 2.	4 3/4 " " " "	6.00
No. 3.	5 3/4 " " " "	8.00

DANDY HEATING BURNER

BUNSEN FLAME

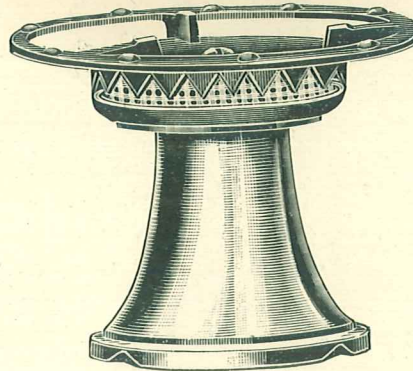


Fig. 214

Per Dozen \$3.50

BUNSEN HEATING BURNER

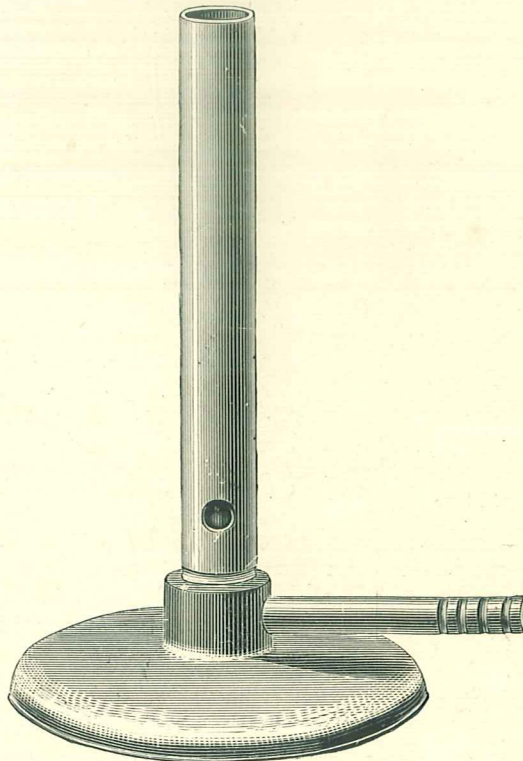
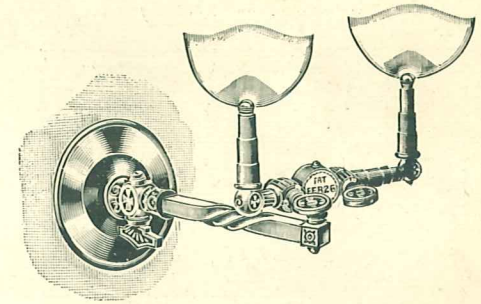


Fig. 215

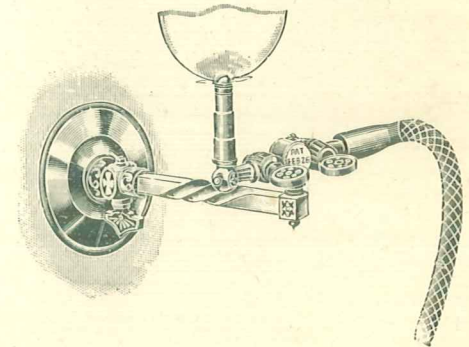
7/16 inch Flame Tube, 6 inches high over all, 3 1/2 inch Base
 As shown, no slide, per Dozen \$6.00
 With slide, per Dozen 9.00

THE BOKER GAS COCK ATTACHMENT

(Patented February 26, 1895)



Giving two lights from one bracket



Connected by tubing to gas stove, for cooking, heating, or other purposes

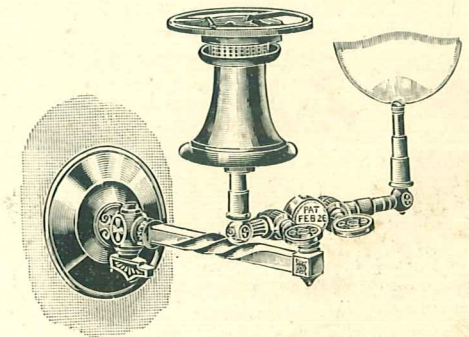


Fig. 216

In use with small gas stove for heating small quantities of water, food, etc.

Attachment only, less Bracket, Pillars and Tips, each \$0.70

PLAIN BY-PASSES

FOR INCANDESCENT GAS BURNERS
All fitted with Black and Brass Balls.

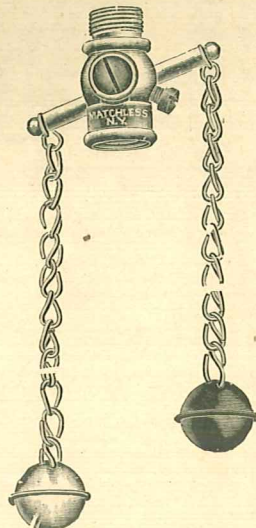


Fig. 217 (No. 2)

Turned from solid brass rod, made small and compact, with blued cock screw and set screw, and fitted with black and brass pendants. Guaranteed gas tight and satisfactory.

Per Gross\$24.00 Per Dozen\$2.50

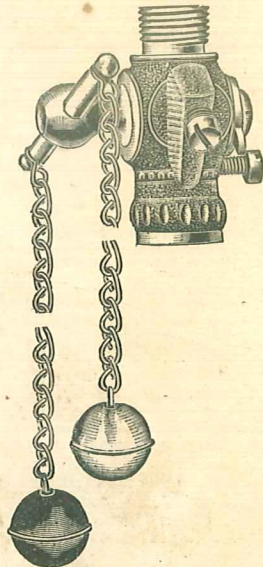
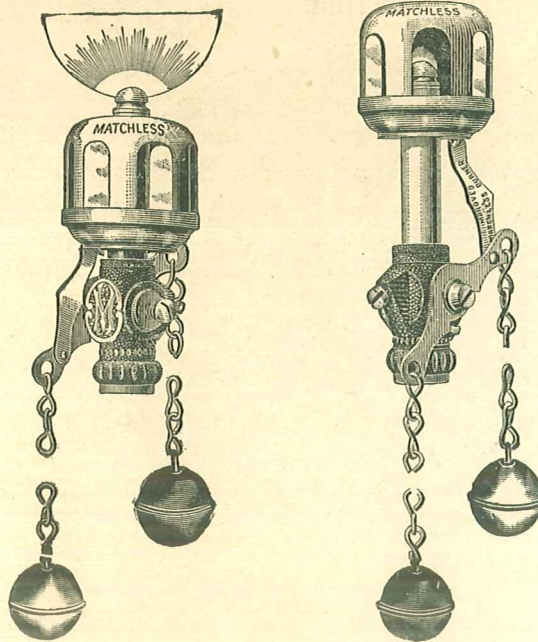


Fig. 218 No. 8

This By-Pass is made from cast brass and has two regulating screws, one screw to regulate the By-Pass flow of gas and a separate screw to regulate the gas pressure.

The latter is indispensable where natural gas is used or where there is much variation in the pressure of artificial gas.
Per Gross \$32.00 Per Dozen\$3.00

BY PASSES



GAS ON

GAS OFF

Fig. 220 (No. 5)

Each\$0.60
Per Dozen 6.00

BY-PASS

FOR CLUSTERS. 3/8 IRON BY 3/8 IRON

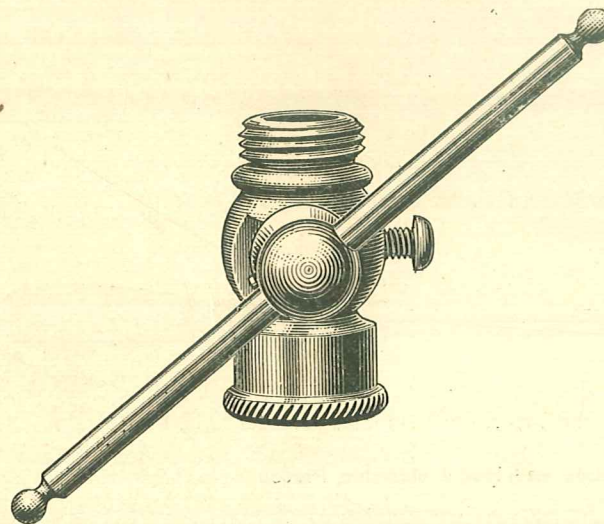


Fig. 219 (No. 24)

Per Gross \$84.00
Per Dozen 8.00

PILOT TUBE BY-PASSES

FOR INCANDESCENT GAS BURNERS

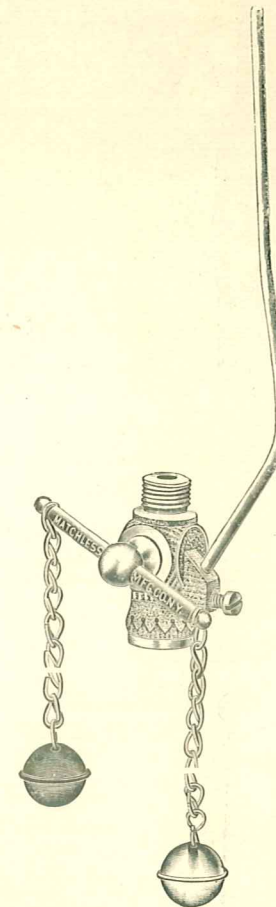


Fig. 221 (No. 14)

This By-Pass will meet a requirement of every dealer in Incandescent Gas Lights. It can be used with any style of Incandescent Burner made, and with any make of mantles, whether mounted or unmounted. It will be found especially convenient to use with the higher grade mantles.

The superiority of this By-Pass lies in the fact that the upper section of the Pilot Tube can be easily connected to the lower portion of the Pilot Tube after the Burner, By-Pass and Mantle are in position and ready for use. The joint of the Pilot Tube is ground in (so that there is no possibility of leakage of gas) and slides over the lower tube, remaining firmly in position.

Pilot tubing made any length or bend desired, and to fit any style of burner.

Each\$0.50
Per Dozen 5.00

SUNDRIES

DROP LIGHT SOCKET



Fig. 222

$\frac{5}{16}$ and $\frac{3}{8}$ inch for Brass Burner
 Per Dozen.....\$ 1.50
 Per Gross..... 15.00

BRASS GROUND JOINT

Takes the place of Rubber Socket

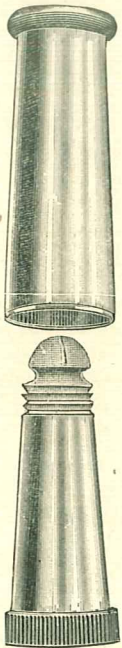


Fig. 223

Per Dozen, Less Tip.....\$3.00

MOHAIR TUBE

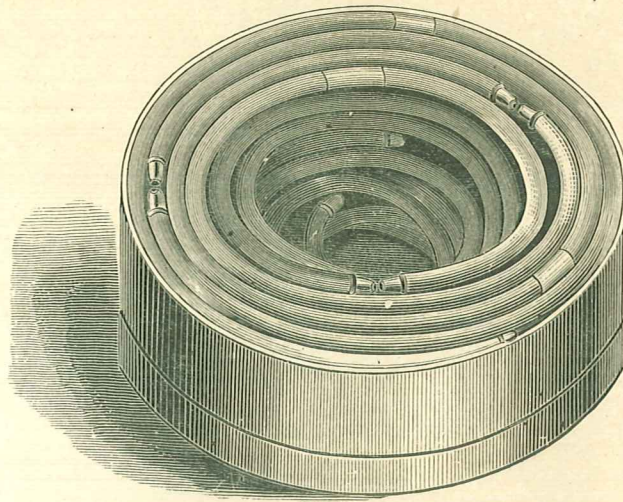


Fig. 224

Portable Mohair, per foot\$.10
 Cigar Mohair Tubing (2 foot lengths) per length..... .40

GOOSE OR STORK NECK



Fig. 228

Per Dozen\$ 1.50
 Per Gross..... 14.00

PILLAR STORK NECK

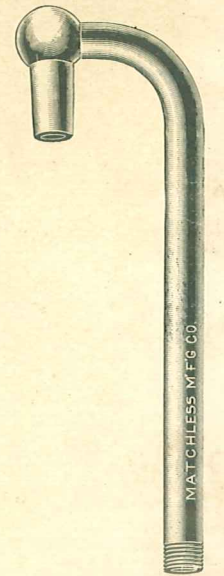


Fig. 229

Polished

Per Dozen\$ 2.00
 Per Gross..... 20.00

TAPER TORCHES

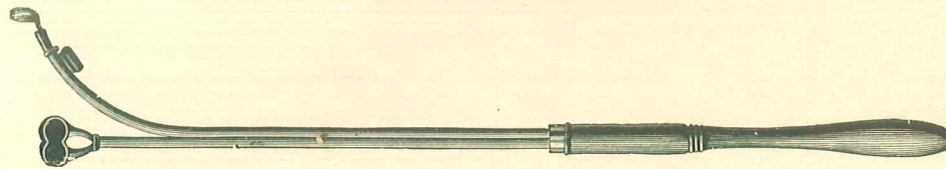


Fig. 225

Polished Tin, Cast Key, Polished Hazel Handle, 30 inches long, Per Dozen\$2.50

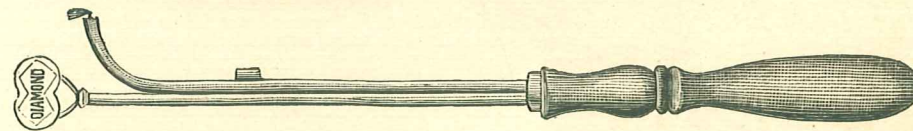


Fig. 226

Nickel Plated, Handsomely Finished, Hardwood Handle, 30 inches long, Per Dozen....\$4.50

Middle and End Extension Pieces



Fig. 227

Per Dozen\$9.00

WAXED TAPERS—FRINGED ENDS

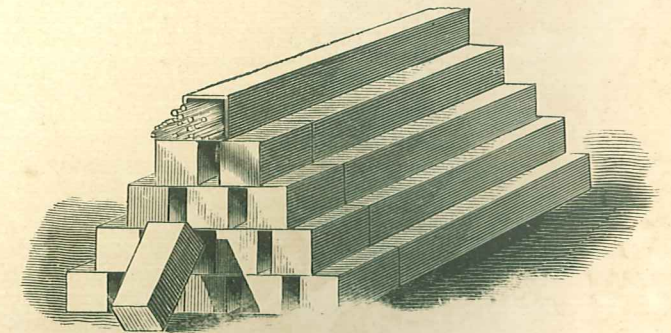


Fig. 230

Length $16\frac{1}{2}$ inches. Quantity in Box, 30.

Per Dozen\$ 1 20
 Per Gross..... 12.00

CIGAR LIGHTERS

EMPIRE CIGAR LIGHTERS

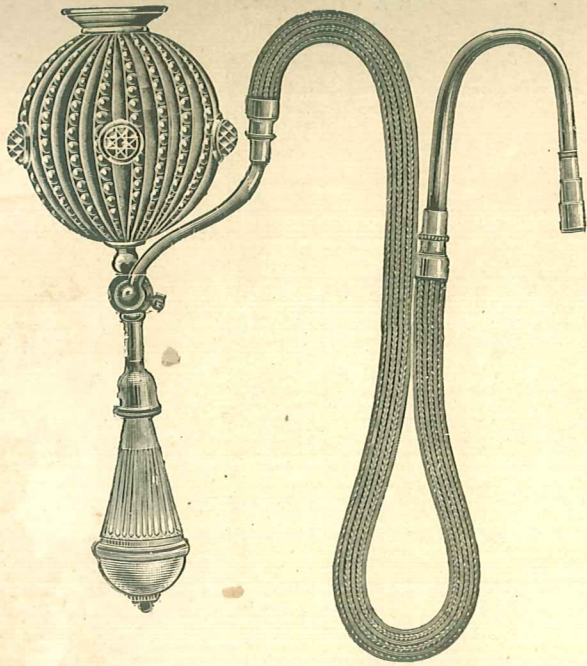


Fig. 231

**GEM
CIGAR LIGHTERS**

Special Pattern, Glass Handle
 Fancy Jeweled Nickel
 Plated or Brass Hood
 Special Finishes to order
 Adjustable
 Complete as shown
 Per Dozen\$42.00

**PATENT CIGAR LIGHTER
 With Glass or Porcelain Handle**

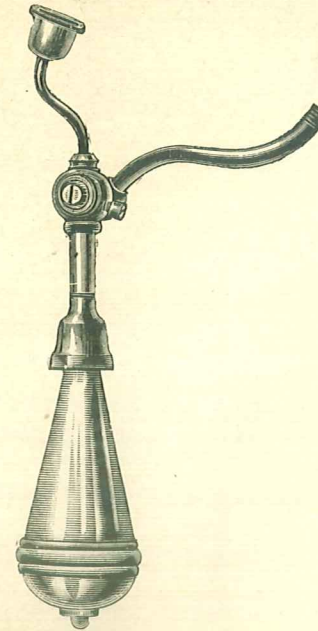


Fig. 233

Cigar Lighter only

Per Dozen.....\$10.00

Complete, 2 Feet of Hose, Goose Neck and Socket, as shown

Per Dozen.....\$20.00

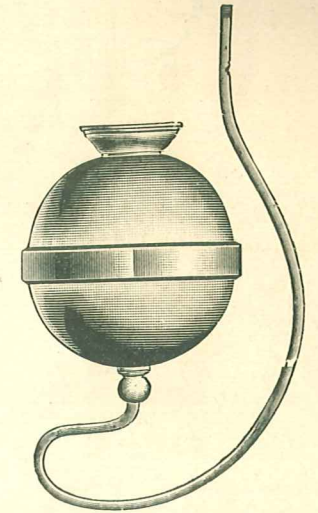


Fig. 234

Plain Hood, Nickel Plated

Per Dozen\$21.00

**JEWEL
 CIGAR LIGHTERS**

Fancy Jeweled Nickel
 Plated or Brass Hood
 Special Finishes to order
 Complete as shown

Per Dozen\$36.00

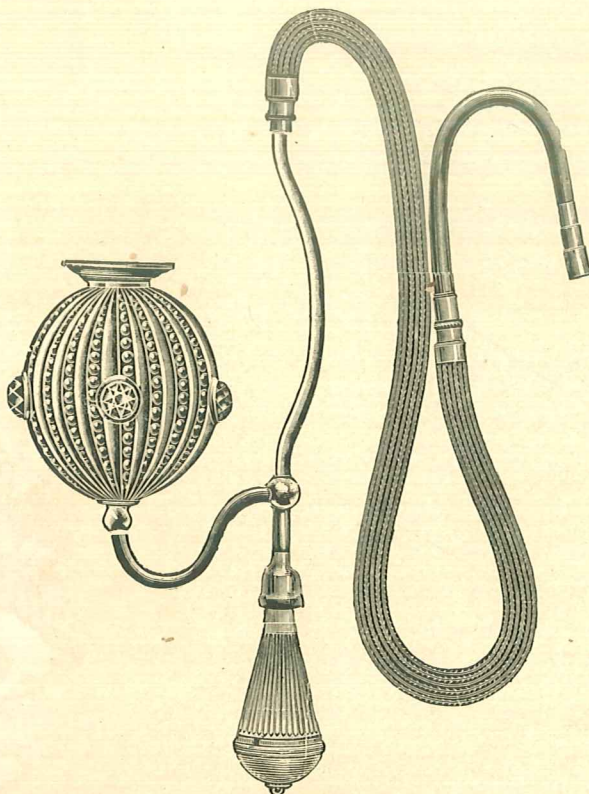


Fig. 232

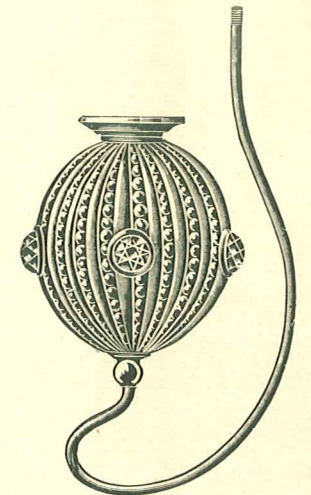


Fig. 235

Fancy Jeweled Hood, Brass or Nickel
 Plated

Per Dozen.....\$24.00

MICA CANOPIES

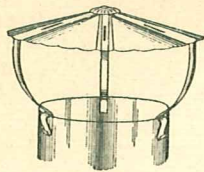


Fig. 236
3 1/2 inches

Per Dozen \$.75
Per Gross 7.50

Fig. 237
4 1/2 inches

Per Dozen \$ 1.50
Per Gross 15.00

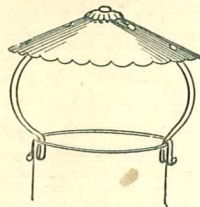


Fig. 238
3 1/4 inches

Per Dozen \$.50
Per Gross 5.00

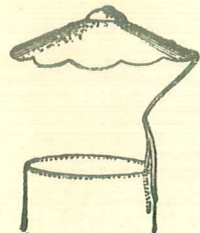


Fig. 239
3 1/4 inches

Per Dozen \$.47 1/2
Per Gross 4.75

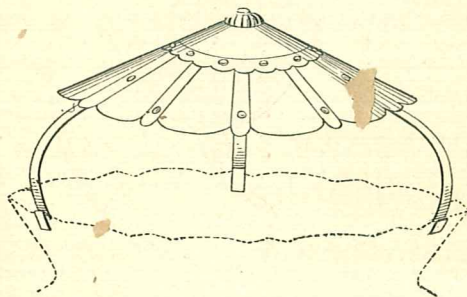


Fig. 240
6 1/2 inches

Per Dozen \$ 1.90
Per Gross 19.00

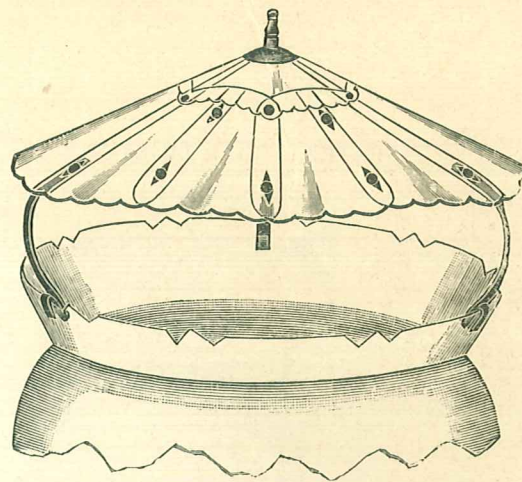


Fig. 241

8 inches

Per Dozen \$ 3.50
Per Gross 35.00

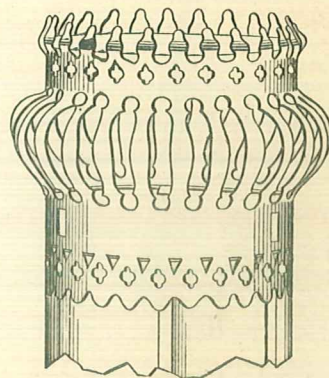


Fig. 242

Aluminum Crown, with Flat
Mica Disk Top

Per Dozen \$ 2.00
Per Gross 20.00

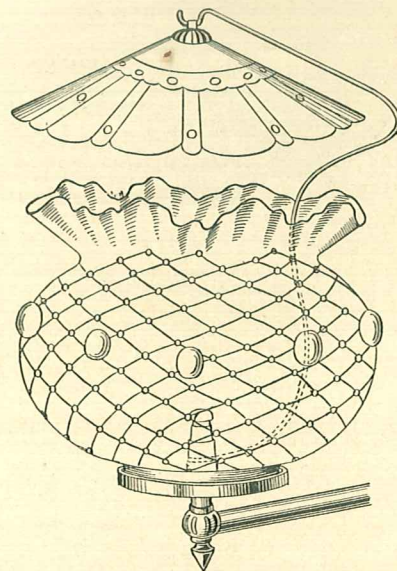


Fig. 243

6 1/2 inches

With wire support to fit over
gas burner inside of globe

Per Dozen \$ 1.90
Per Gross 19.00

MICA CHIMNEYS

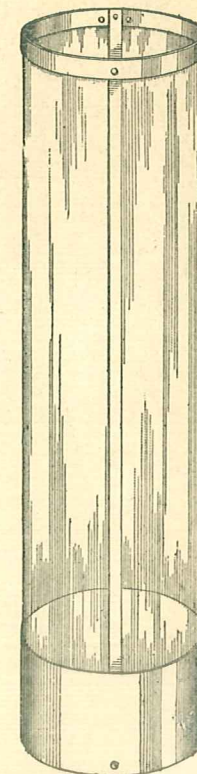
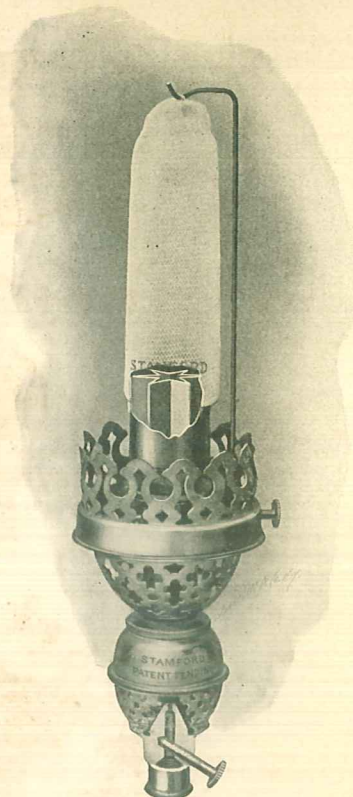


Fig. 244

Six, Seven and Eight inch
Two, Three, Six and Nine Pieces

		DOZEN	GROSS
No. 244	6-inch Etched Band, 1-piece, . . .	\$2.00	\$22.00
No. 245	7 " " " . . .	2.25	24.00
No. 246	8 " " " . . .	2.50	25.00
No. 247	6 " " 2-piece, . . .	1.85	20.00
No. 248	7 " " " . . .	2.00	21.00
No. 249	8 " " " . . .	2.15	22.50
No. 250	6 " " 3-piece, . . .	1.50	15.50
No. 251	7 " " " . . .	1.75	18.00
No. 252	8 " " " . . .	2.00	21.00
No. 253	6 " " 6-piece, . . .	1.25	12.50
No. 254	7 " " " . . .	1.40	13.50
No. 255	8 " " " . . .	1.55	14.50
No. 256	8 " " " . . .	2.65	28.50

THE STAMFORD BURNER—SMOKELESS, DUSTLESS, NOISELESS



Post Style Fig. 8168

Copper Gas Distributor

Gas Nozzle Cut off

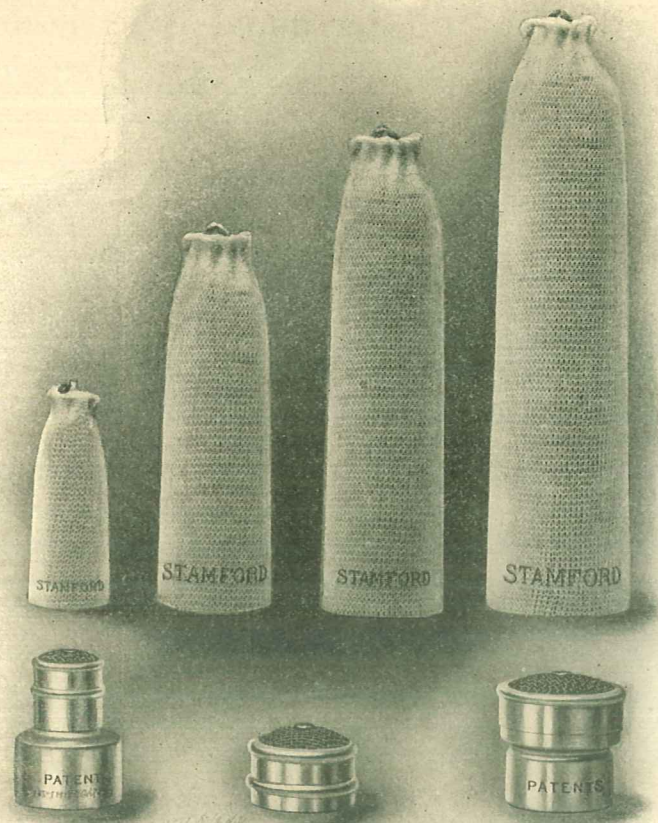
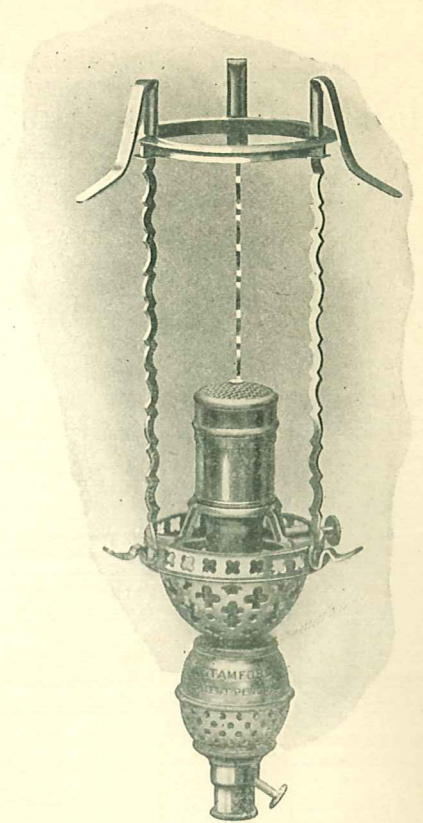


Fig. 8050

Exchangable Tube Caps for different size mantles

High Candle Power



Gallery Style Fig. 8068

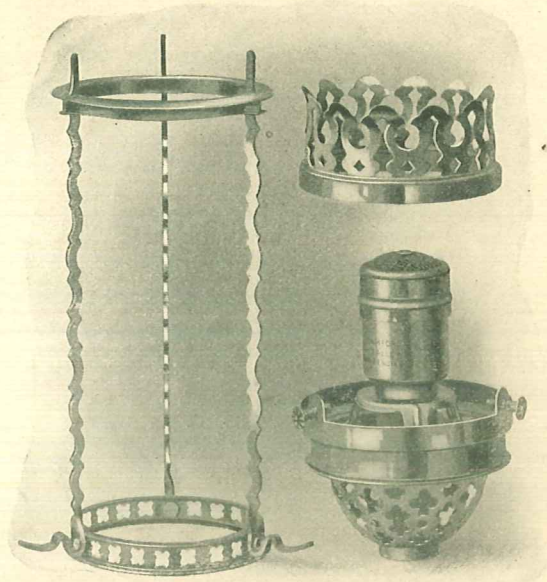
A new burner, constructed on scientific lines—smokeless, dustless and noiseless. Four sizes of mantles can be used on one burner, ranging from a small night light to a large arc burner giving intense light. Adapted to all the usual gas and electric glassware.

(SEE NEXT PAGE)

THE STAMFORD BURNER—SMOKELESS, DUSTLESS, NOISELESS

The Combination Burner can be fitted to all the usual Electric and Gas Mantel Glassware. The dealer need not carry two shapes of glassware for the same number. Your Electric Globes, always cheaper than Gas Globes, can be used for both Gas and Electric on a Combination Fixture.

This burner is adapted for all regular makes of mantels and for natural gas.



This style used with Post or Gally Ring adapted to usual Gallery or Post Mantle.

Fig. 8268

SAMPLE—We will send, postpaid, for 50c. a sample Combination Burner, complete with large and small mantles and extra tube caps.

PRICES:

	Less Than 100	Case Containing 100 Burners	Case Containing 500 Burners		Per Dozen	Per Gross
Gallery No. 8068,	\$.26	\$.25	\$.24 1/2	Gallery Ring (for Comb. Burners),	\$.60	\$6.00
Post No. 8168,	.27	.26	.25 1/2	Post Ring " "	.60	6.00
Combination No. 8268	.27	.26	.25 1/2	Tube Caps, either size,	.50	5.00

State whether for Natural or Artificial Gas when ordering.

INCANDESCENT BURNERS

NOISELESS ARGAND BURNER

With Grecian Holder

(Patented July 18, 1876, and February 22, 1887)

D

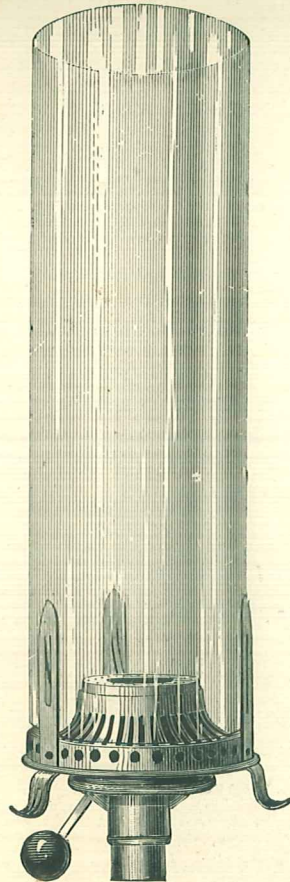


Fig 260

If for lighting by Electricity, so state in ordering.
In ordering, state whether for Coal or Machine Gas.

BRASS

Per Dozen.....\$5.00 Per Gross\$48.00

Fine Hole (for Rich Gas) Per Dozen.....\$12.00

LAVA

Per Dozen.....\$6.00 Per Gross.....\$68.00

BEACON INCANDESCENT GALLERY GAS BURNER

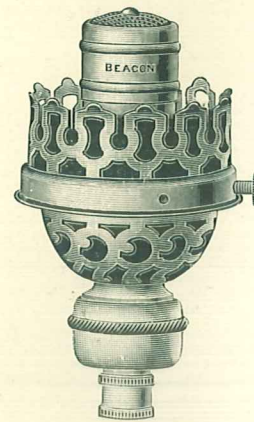
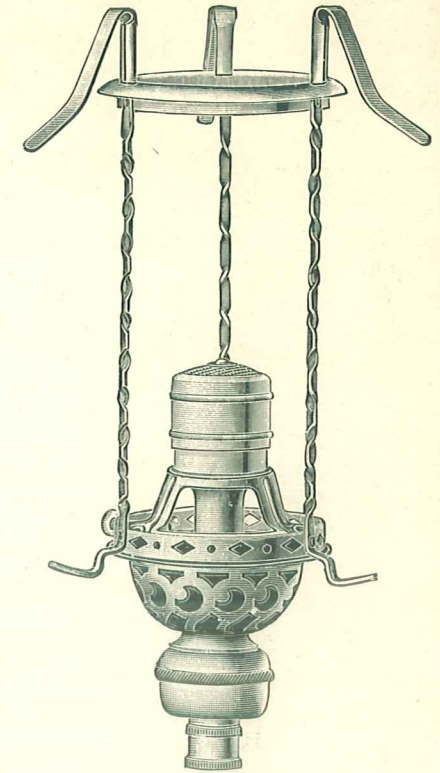


Fig. 261 (No. 2)

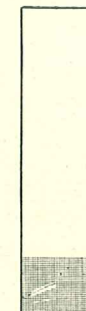
No. 261 Gallery.....
No. 262 Post.....

	Less than 100	Case of 100	Case of 600
No. 261 Gallery.....	.15	\$14.00	\$78.00
No. 262 Post.....	.16	15.00	84.00

Fig. 262 (No. 2)



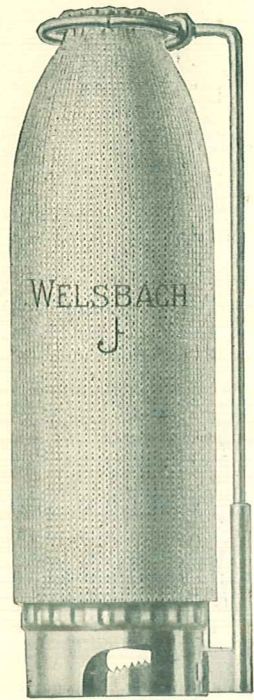
MACBETH PEARL GLASS CHIMNEY



MACBETH
No. 180.D
PEARL GLASS.
LENGTH 8 IN.
DIAM. BOTTOM 2 IN.
Fig. 263

Per Dozen.....\$1.25

MANTLES



Class A
No. 197

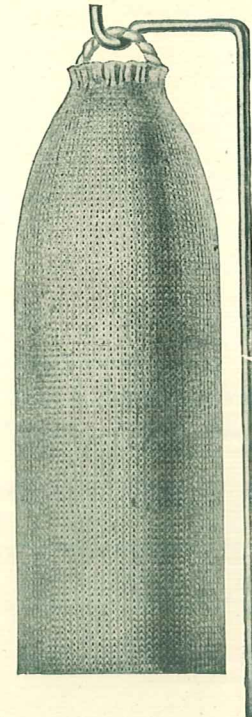
(Cap Mantles, U. S. Patent No. 423,317, March 11, 1890)



Class A
No. 2C



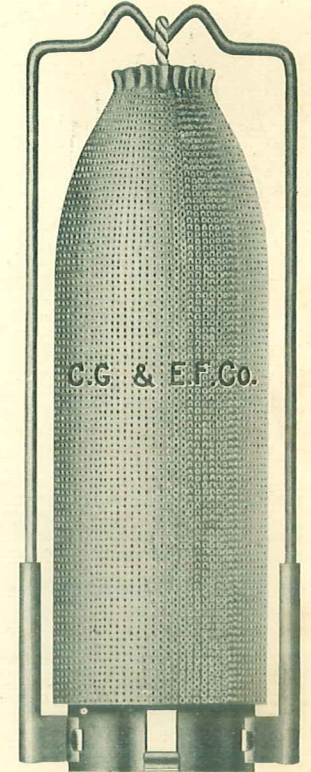
Class A
No. 22



No. 300
Without Brand



No. 301C Clover
Light Weave



No. 301B

	Less than 100	100 or over
No. 197 First quality Platinum, tied cap	\$.28½	\$.26
No. 22 Thenu, Asbestos loop mantle, Nickel support hook	.17½	.15
No. 2C Second Quality, double wire cap	.17½	.15
No. 301B C. G. & E. F. Co., high grade, double wire	.13	.10½
No. 301C Clover, light weave, double wire cap	.11	.08½
No. 300 Without brand, light weave	.08	.06

SUNDRIES

BURNER CUPS

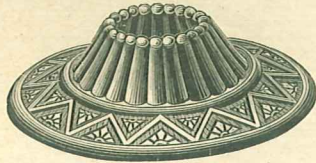


Fig. 399 (No. 10)

Per Gross.....\$1.25

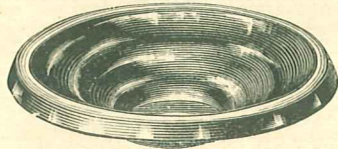


Fig. 400 (No. 13)

Per Gross.....\$1.60

BRACKET BACKS OR CEILING PLATES

STRUCK.



Fig. 401, 2½ in., per Gross.....\$2.00

Fig. 402, 3 in. ".....3.00

RIBBED.

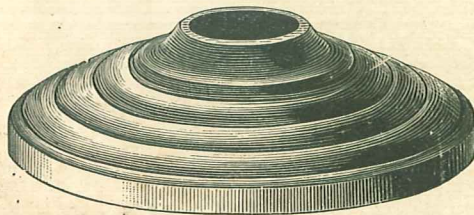


Fig. 403, 2½ in., per Gross.....\$ 4.00

Fig. 404, 3 in., ".....5.00

Fig. 405, 4 in., ".....10.00

SEATING RINGS.



Finishers

Fig. 406 (No. 84), Checks ½ in. Casing, per Gross.....\$1.50

Fig. 407 (No. 64), " ⅝ in. " " ".....1.75

Fig. 408 (No. 20), " ¾ in. " " ".....2.00

Fig. 409 (No. 56), " ⅞ in. " " ".....2.25

Fig. 410 (No. 58), " 1 in. " " ".....2.50



Single Seat

Fig. 411 (No. 101), Seats ½ in., Checks ½ in. Casing.....\$1.50

Fig. 412 (No. 104), " ⅝ in., " ⅝ in. ".....2.00

Fig. 413 (No. 99), " ¾ in., " ¾ in. ".....2.25

Fig. 414 (No. 88), " ⅞ in., " ⅞ in. ".....2.50

Fig. 415 (No. 93), " 1 in., " 1 in. ".....3.00

Fig. 416 (No. 16), " ⅝ in., " ¾ in. ".....2.00

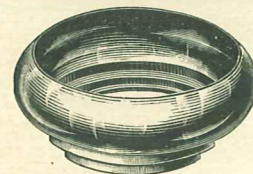
Fig. 417 (No. 87), " ¾ in., " ⅞ in. ".....2.25

Fig. 418 (No. 94), " ⅞ in., " 1 in. ".....2.75

Fig. 419 (No. 110), " 1 in., " 1½ in. ".....3.00

Fig. 420 (No. 109), " 1½ in., " 1¼ in. ".....3.25

Fig. 421 (No. 117), " 1¼ in., " 1¼ in. ".....4.50



Double Seat

Fig. 422 (No. 82), Seats ⅝ and ¾ in., Checks ¾ in. Casing ..\$2.00

Fig. 423 (No. 15), " ¾ " ⅞ in., " ¾ in. " .. 2.25

Fig. 424 (No. 68), " ¾ " ⅞ in., " ⅞ in. " .. 2.50

Fig. 425 (No. 14), " ⅞ " 1 in., " ⅞ in. " .. 2.75

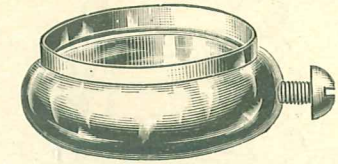
Fig. 426 (No. 107), " ⅞ " 1 in., " 1 in. " .. 3.00

Fig. 427 (No. 108), " ⅞ " 1½ in., " 1½ in. " .. 3.25

Fig. 428 (No. 60), " 1 " 1½ in., " 1½ in. " .. 3.50

Fig. 429 (No. 42), " ⅞ " 1½ in., " 1¼ in. " .. 3.50

SLIP RINGS



For Round Tubing

Fig. 430, ⅜ in., per Gross.....\$4.50

Fig. 431, ⅞ in., ".....4.50

Fig. 431, ½ in., ".....4.50

Fig. 432, ⅝ in., ".....4.50

Fig. 433, ¾ in., ".....4.50

Fig. 434, ⅞ in., ".....5.00

Fig. 435, 1 in., ".....5.00

Fig. 436, 1½ in., ".....5.50

Fig. 437, 1¼ in., ".....6.00

CEILING HOOKS

FOR HANGING SMOKE BELLS

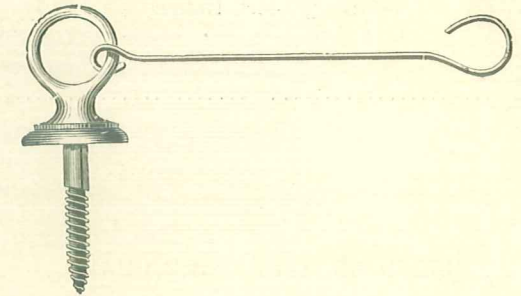


Fig. 264

Per Dozen.....\$ 1.00

Per Gross.....10.00

PULPIT SHADE

FOR ARGAND BURNER, INCANDESCENT GAS

AND INCANDESCENT ELECTRIC

Also made with 4-inch Holder for Kerosene

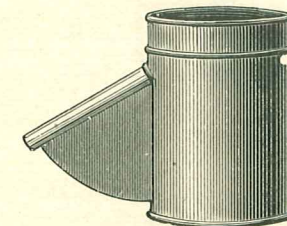


Fig. 277

French Bronze Finish, each.....\$2.00

Nickel Plated, each.....4.50

Polished Brass, each.....5.00

INCANDESCENT LAMP GUARD

TINNED WIRE

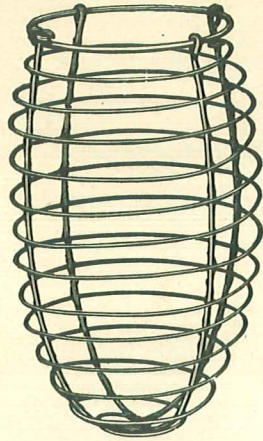


Fig. 266

Diameter 4½ inches Height 7 inches
Fits a ¾-inch Holder

Per Dozen\$3.25

WIRE AND TIN GUARDS

WIRE HALF GUARD

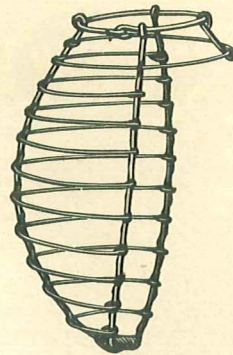


Fig. 268

Diameter 3½ inches Height, 6 inches
Fits a ¼-inch Holder

Per Dozen\$ 6.00
Brass Wire, per Dozen..... 12.50

HINGED WIRE GUARD

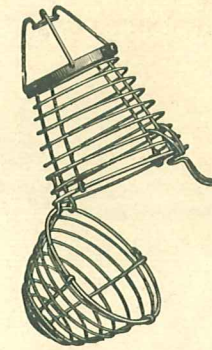


Fig. 269

Diameter, 4½ inches Height, 7 inches
¾-inch Holder

Per Dozen, less holders.....\$10.00

CORRUGATED TIN SHADE

BRIGHT TIN INSIDE, GREEN JAPANED OUTSIDE

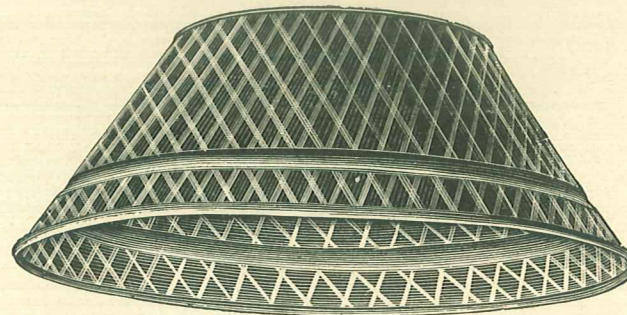


Fig 265

10-inch, per Dozen.....\$4.00
12-inch, " 5.00

Prices given above do not include Holder

TINNED WIRE GLOBE

FOR PREVENTING ACCIDENTAL CONTACT WITH GAS FLAME

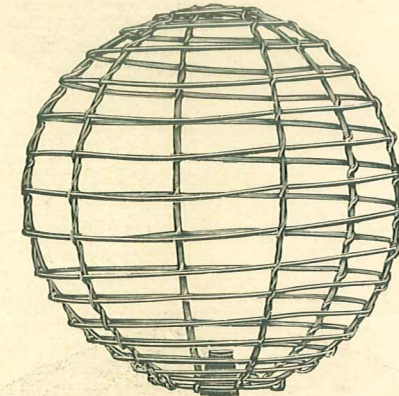


Fig. 270

Made to fit over or under the burner, as desired
Diameter, 7 inches

Per Dozen\$3.75

HINGED BILLIARD WIRE GUARD

TINNED WIRE

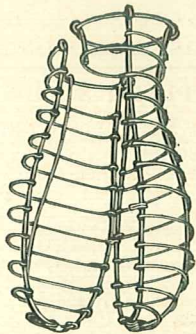


Fig. 267

Takes any 16 candle-power lamp
Fits ¼-inch Holder

Per Dozen.....\$7.00

HOLDERS

SHADOWLESS SPRING HOLDER

FOR CONE SHADES
8, 10 and 12 inches.

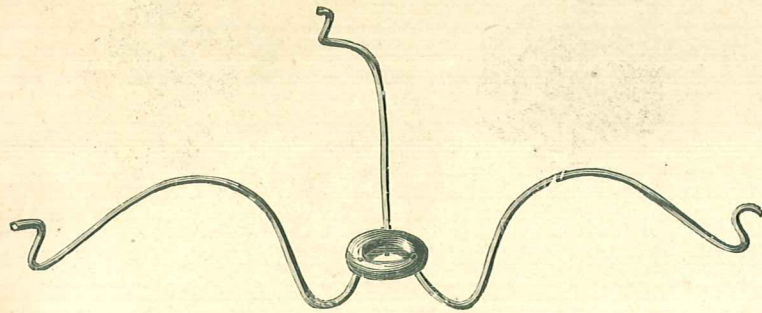


Fig. 271

Per Dozen\$1.50 Per Gross.....\$15.00

HOLDER FOR PAPER OR TIN SHADE

TO FIT COMMON BURNER
10 and 12 inches

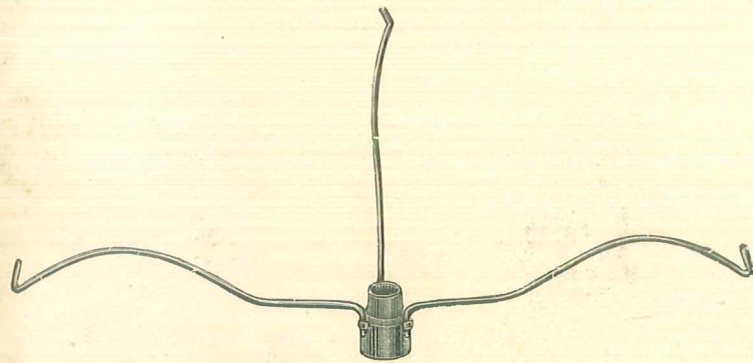


Fig. 272

Per Dozen\$1.40 Per Gross.....\$13.50

ARGAND SPRING HOLDER

FOR PORCELAIN SHADES
8, 9, 10, 10½, 11, and 12 inch

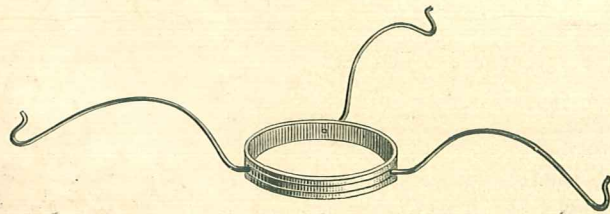


Fig. 273

Per Dozen\$1.50 Per Gross.....\$15.00

STRUCK GLOBE HOLDER

4 and 5 inches

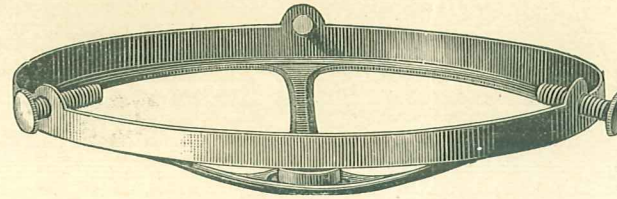


Fig. 274

4 inch, per Dozen\$1.00 Per Gross.....\$ 9.00
5 " " 1.20 Per " 11.00

ELECTRIC SHADE HOLDER

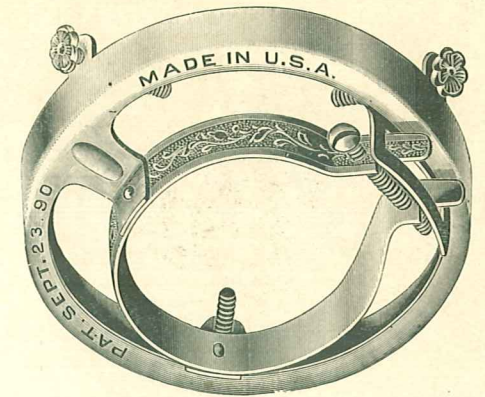


Fig. 275

2¼ inch per Dozen\$ 1.20
2¼ " Gross 9.00
3¼ " Dozen 2.40
3¼ " Gross 17.50
4 " Dozen 3.00
4 " Gross 28.00

JEM PERFECT WIRE SHADE HOLDER

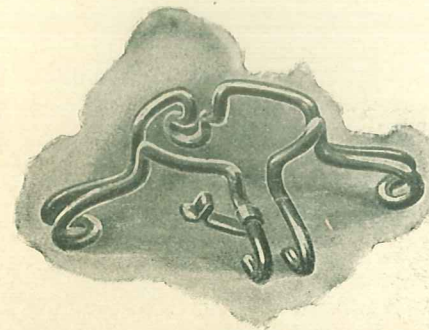


Fig. 276

Advantages:

- 1 Applied in a second.
- 2 No lost screws nor time lost in hunting for them.
- 3 No waste on account of stripped threads.
- 4 Absolutely rigid at any angle, shade cannot droop.
- 5 Self-Centering.
- 6 Symmetrical from every point of view.
- 7 Four points of support.
- 8 Easily dipped and refinished.
- 9 Will not loosen from vibration nor shock.
- 10 No tools required. Cheaper and better than any other holder.

Per Dozen, Regular Finish.....\$.30 net Per Dozen, Special Finishes.....\$.60 net
Per Gross.....\$3.00 net
10 Gross at.....\$2.75 net 25 Gross at\$2.60 net

SOCKETS AND INSULATING JOINTS

STANDARD SOCKETS

FIBER LINED

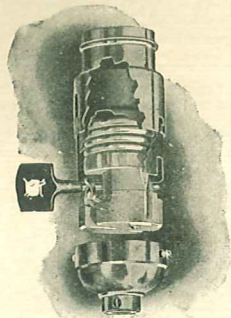


Fig. 9386



Fig. 9392

Made under General Electric Co.'s Patents.
 Approved by National Board of Fire Underwriters and Factory Mutual
 Fire Insurance Companies.
 Single Porcelain Base.
 Threads do not strip.
 Extremely simple and durable.

No. 9386 Ed. Key Sockets.....\$.33
 No. 9392 Ed. Keyless Sockets..... .30

Special prices on quantities

NEW ENGLAND SOCKETS

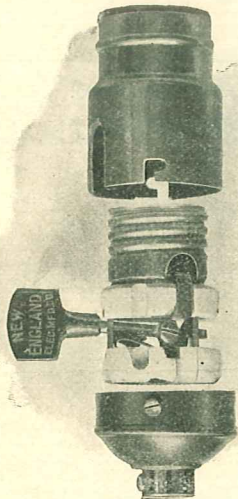


Fig. N9386

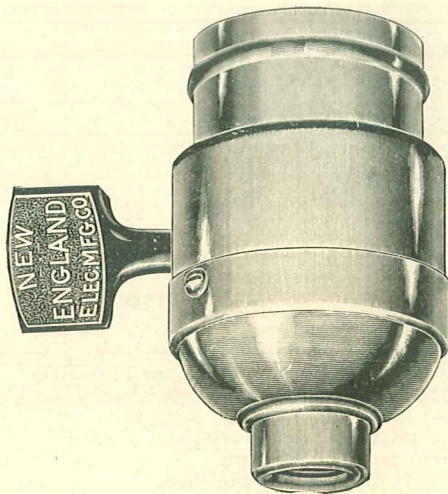


Fig. N9392

Fig. N9386 Ed. Key Sockets (new shell)\$.33
 Fig. N9392 Ed. Keyless Sockets (new shell)30

Special prices on quantities

Macallen Insulating Joint Bracket

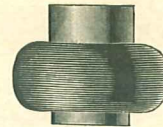


Fig. 1892

Macallen Insulating Joint Chandelier

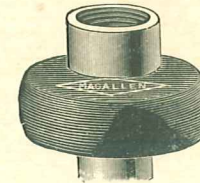


Fig. 1893

Macallen Separable Insulating Joint Electrolier

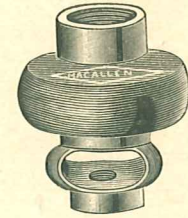


Fig. 1894

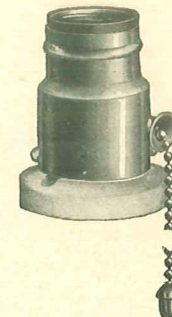
$\frac{3}{8}$ x $\frac{1}{8}$ inch, each\$.36	$\frac{3}{8}$ x $\frac{1}{8}$ inch, each\$.45	$\frac{3}{8}$ x $\frac{1}{8}$ inch, each\$.45
$\frac{3}{8}$ x $\frac{1}{4}$ " " "36	$\frac{3}{8}$ x $\frac{1}{4}$ " " "45	$\frac{3}{8}$ x $\frac{1}{4}$ " " "45
$\frac{3}{8}$ x $\frac{3}{8}$ " " "36	$\frac{3}{8}$ x $\frac{3}{8}$ " " "45	$\frac{3}{8}$ x $\frac{3}{8}$ " " "45
$\frac{1}{2}$ x $\frac{1}{8}$ " " "50	$\frac{1}{2}$ x $\frac{1}{8}$ " " "60	$\frac{1}{2}$ x $\frac{1}{8}$ " " "60
$\frac{1}{2}$ x $\frac{1}{4}$ " " "50	$\frac{1}{2}$ x $\frac{1}{4}$ " " "60	$\frac{1}{2}$ x $\frac{1}{4}$ " " "60
$\frac{1}{2}$ x $\frac{3}{8}$ " " "50	$\frac{1}{2}$ x $\frac{3}{8}$ " " "60	$\frac{1}{2}$ x $\frac{3}{8}$ " " "60

HUBBELL PULL SOCKETS AND RECEPTACLES

Standard length of Chain 6 inches



No. 35000
Pull Socket



No. 35006
Pull Wall Socket



No. 35009
Pull Wall Socket K. W. Base

No.	Description	Std. Pkg.	Price
No. 35000	Edison Base Pull Socket, $\frac{1}{8}$ in. cap	100	\$.60 net
No. 35002	T. H. Base Pull Socket, $\frac{1}{8}$ in. cap	100	.60 "
No. 35004	West. Base Pull Socket, $\frac{1}{8}$ in. cap	50	.60 "
No. 35006	Edison Base Pull Wall Socket	25	.70 "
No. 35007	T. H. Base Pull Wall Socket	25	.70 "
No. 35008	West. Base Pull Wall Socket	25	.70 "
No. 35009	Ed. Base Fus. Pull Socket K. W. Base Concealed	20	1.10 "
No. 35010	Ed. Base Fus. Pull Socket K W Base Cleat	20	1.10 "
No. 35011	Ed. Base Fus. Pull Socket K. W. Base Mfg. Wk	20	1.10 "

INCANDESCENT LAMPS

ECONOMICAL TURN DOWN LAMP

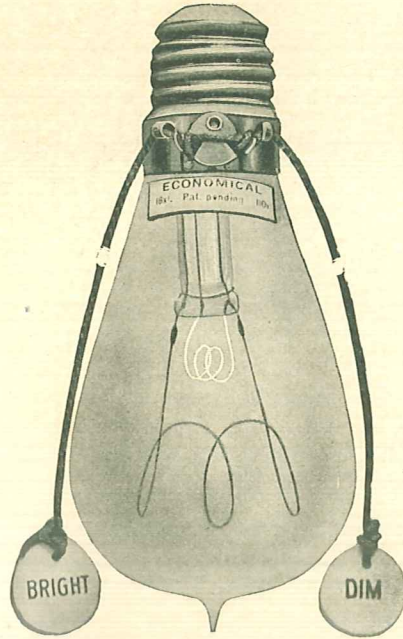


Fig. 502

PAT. PENDING.

Pull string for bright or dim

In all voltages from 50 to 230-8x1 and 16x1 c.p.

All Standard Bases fit sockets in use.

NET PRICE LIST

(250 in bbl. assorted Voltages and Bases if desired.)

Barrel Lots	\$.37½ per lamp
Lots of 10040 " "
Lots of 5042½ " "
Lots of 2545 " "
Less than 2550 " "
Less than 660 " "

2½c extra for T. H., for which we furnish adapters.

IMPROVED PORCELAIN WEATHER PROOF SOCKET

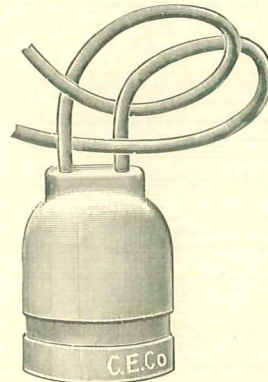


Fig. 503

In Standard Packages (250).....\$.12½
Less than Standard Packages..... .15

This is the neatest and best weather-proof socket ever put on the market, and its use insures a handsome appearing job, as well as a perfect electrical one.

Sample furnished upon application.

Made in Edison base only, 25c. Regular length wire, 9 in. Special lengths to order.

THE OHIO

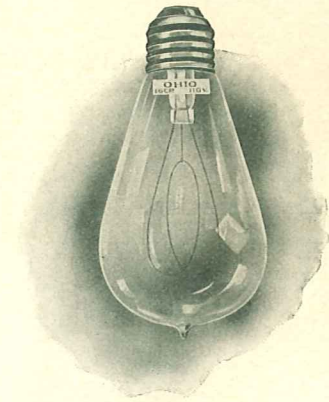


Fig. 504

Standard Selected Lamp at Fair Prices

NET PRICE LIST

Ohio Incandescent Lamps

Subject to change without notice

STANDARD LAMPS			SPECIAL LAMPS		
Voltage from 45 to 130 inclusive			Candle Power	Broken Pkgs.	Standard Pkgs.
Candle Power	Broken Pkgs.	Standard Pkgs.	2-inch Round Bulb, Plain,		
4 to 25	\$.20	\$.18	4 to 16	\$.25	\$.23
32	.32	.27	Candle Lamps,		
50	.50	.45	8-10-16	.30	.28
200 to 250 VOLT LAMPS					
Candle Power	Broken Packages		Standard Packages		
8-10-16	\$.22		\$.20		
20-25	.32		.27		
32	.40		.35		

For Frosting, all types and candle powers, 20 per cent additional. Superficially colored or dipped, 20 per cent additional.

Genuine Colored Glass Lamps—8-10-16 Candle Power:

Green, blue or purple, 10c each additional.
Opal, ruby, amber or canary, 20c each additional.

Above prices are for Lamps with Edison or Westinghouse base.

T. H., U. S. and Brush Swan Base, 1c each additional.
Hawkeye Base, - - - 2c each additional.
Shaefer, Perkins and other Bases, 3c each additional.

STANDARD PACKAGES

8-10-16-20-25 Candle Power, 250 Lamps.
32 Candle Power, 100 Lamps.

Standard Packages may include lamps of assorted candle powers and voltages.

NOTE.—To avoid delay in shipment, candle power, voltage, base and efficiency of lamps required should always be stated in ordering.

IRON PIPE AND CASING

IRON PIPE SIZES

Actual Outside Dia. Inches	No. Threads Per Inch	TRADE NAME	Nominal Thickness. Inches	Weight Per Running Foot
0.405	27	$\frac{1}{8}$.068	0.24
0.54	18	$\frac{1}{4}$.088	0.42
0.675	18	$\frac{3}{8}$.091	0.56
0.84	14	$\frac{1}{2}$.109	0.84
1.05	14	$\frac{3}{4}$.113	1.12
1.315	11½	1	.134	1.67
1.66	11½	1¼	.140	2.25
1.9	11½	1½	.145	2.69
2.375	11½	2	.154	3.66

ACTUAL SIZES

Copyright, 1888, by E. F. Gennert.

The above represents a center sectional view of Iron Pipe from $\frac{1}{8}$ to 2 inches, each piece being $\frac{1}{2}$ inch long, showing actual diameter of pipe, size of threads, thickness and weight.

PRICE LIST

Fig. 600	$\frac{1}{8}$ inch\$.05½	Fig. 605	1 inch\$.16½
Fig. 601	$\frac{1}{4}$ "05½	Fig. 606	1¼ "22½
Fig. 602	$\frac{3}{8}$ "05½	Fig. 607	1½ "27
Fig. 603	$\frac{1}{2}$ "08½	Fig. 608	2 "36
Fig. 604	$\frac{3}{4}$ "11½			

EXTRA FINISHED BRASS CASING

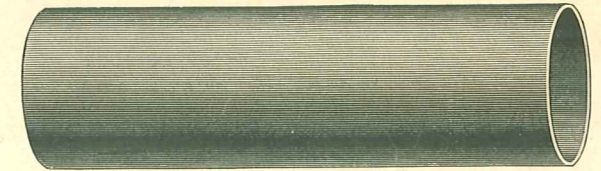


Fig. 609

$\frac{5}{8}$ inch to 1½ inch, Polished Brass\$1.00 per lb.
 $\frac{5}{8}$ inch to 1½ inch, Oxidized Copper. 1.10 "
 Special quotations on quantity

BOX PLATE

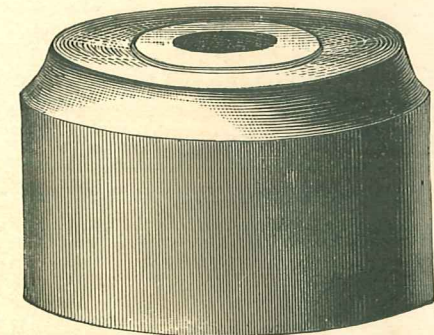


Fig. 700

2¼ inch diameter, 1 inch deep, per Dozen.\$1.30

Other sizes to order

SUNDRIES

IRON CROWFOOT

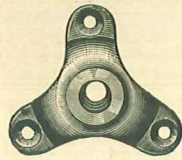


Fig. 701

SIZE

Fig. 701	3	diameter, tapped,	$\frac{3}{8}$	inch,	1	inch high, each	\$0.05
Fig. 702	3	"	$\frac{1}{2}$	"	1	"05
Fig. 703	4	"	$\frac{1}{4}$	"	$1\frac{1}{4}$	"10
Fig. 704	4	"	$\frac{3}{8}$	"	$1\frac{1}{4}$	"10

HUB TAPE

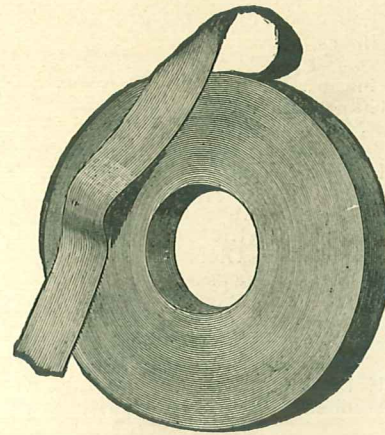


Fig. 732

Per Pound.....\$0.65

IRON TRIPODS

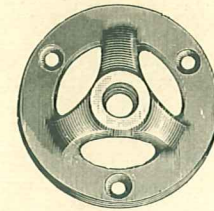


Fig. 718

SIZE

Fig. 718	$3\frac{1}{4}$	diameter, tapped,	$\frac{1}{8}$	inch,	$1\frac{1}{4}$	inch high, each	..	\$0.10
Fig. 719	$3\frac{1}{4}$	"	$\frac{1}{4}$	"	$1\frac{1}{4}$	"	..	.10
Fig. 720	$3\frac{1}{4}$	"	$\frac{3}{8}$	"	$1\frac{1}{4}$	"	..	.10
Fig. 721	$3\frac{1}{4}$	"	$\frac{1}{2}$	"	$1\frac{1}{4}$	"	..	.10

IRON BODY

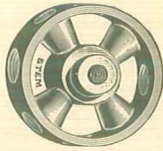


Fig. 705 (No. 1992)

$\frac{1}{4}$ x $\frac{1}{8}$ inch

FOR GAS

Fig. 705	2	lights, each	\$0.15
Fig. 706	3	"24
Fig. 707	4	"30

FOR ELECTRIC

Fig. 708	2	lights, each	\$0.26
Fig. 709	3	"34
Fig. 710	4	"44

FOR COMBINATION

Fig. 711	2-2	lights, each	\$0.44
Fig. 712	3-3	"54
Fig. 713	4-4	"64

Two Light Iron Chandelier Body

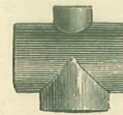


Fig. 715 (No. 1993)

Per Dozen.....\$0.90

COVERING TUBE TOP FINISHERS

MALLEABLE IRON

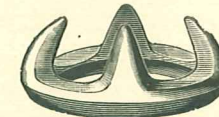


Fig. 722

Short Nipples

IRON



Fig. 716 (No. 1997)

Continuous Thread



Fig. 717

Shoulder

$\frac{1}{8}$ -inch, each.....\$0.07

Fig. No.	722	(270),	$\frac{3}{8}$	inch Iron Pipe,	$1\frac{1}{2}$	inch Tube, per 100	\$1.70
	723	(271),	$\frac{3}{8}$	"	$1\frac{1}{4}$	"	1.70
	724	(272),	$\frac{3}{8}$	"	$1\frac{1}{8}$	"	1.40
	725	(273),	$\frac{3}{8}$	"	1	"	1.00
	726	(274),	$\frac{1}{4}$	"	$1\frac{1}{8}$	"	1.00
	727	(275),	$\frac{1}{4}$	"	1	"90
	728	(276),	$\frac{1}{4}$	"	$\frac{7}{8}$	"80
	729	(277),	$\frac{1}{8}$	"	$\frac{7}{8}$	"70
	730	(278),	$\frac{1}{8}$	"	$\frac{3}{4}$	"60
	731	(279),	$\frac{1}{8}$	"	$\frac{3}{8}$	"60

