



TerraCycle: From Worm Poop to Garbage Empire!



Organic Waste



Red Worms



Worm Poop

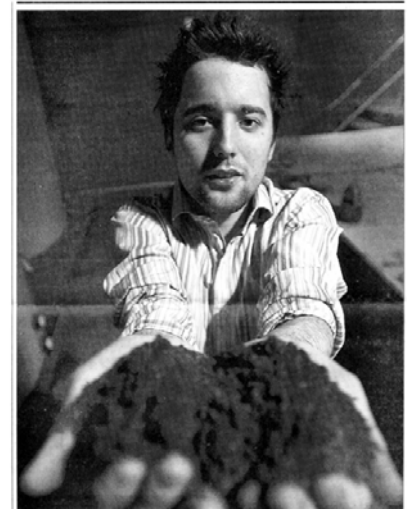


PHOTO: JAMES HANCOCK
Get a load of this: Tim Tandy thinks he's found his fortune in worm castings. And he's being doubly nice to the environment. Not only is the product organic, but he's selling it as plant food in old, plastic pop bottles.

Worm poop finds a place in Wal-Mart

Cost of Sustainable Design



Reused
\$0.02 per bottle



0% Recycled
\$0.05 per bottle



30% Recycled
\$0.07 per bottle



Compostable
\$0.15 per bottle

**Used 20oz
bottles**



**Worm Poop
Liquid**



**End Run / over run
trigger sprayers**



**TerraCycle
Plant Food**

TERRACYCLE IS A GLOBAL MOVEMENT



21 million

NUMBER OF PEOPLE
COLLECTING WASTE FOR
TERRACYCLE GLOBALLY

2.5 billion

PIECES OF GARBAGE COLLECTED
BY TERRACYCLE

90,000

NUMBER OF COLLECTION
SITES COLLECTING WASTE
FOR TERRACYCLE GLOBALLY

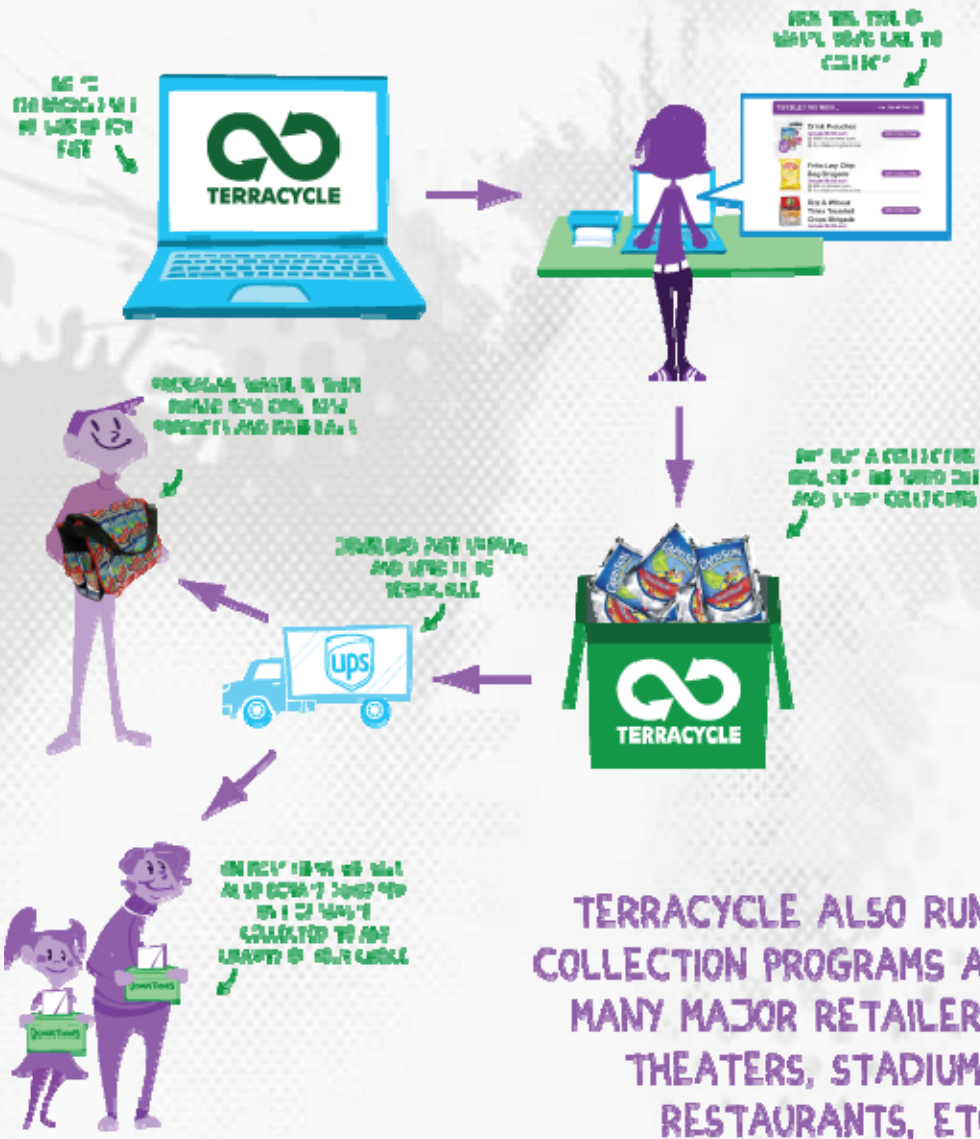
14

COUNTRIES WHERE TERRACYCLE
OPERATES (ARGENTINA, BELGIUM,
BRAZIL, CANADA, FRANCE, GERMANY,
IRELAND, ISRAEL, MEXICO,
NETHERLANDS, SPAIN, SWEDEN,
TURKEY, UK AND US

\$2.1 million

RECENT ANNUAL PAYMENT
TERRACYCLE MAKES GLOBALLY
TO VARIOUS CHARITIES FOR
WASTE COLLECTED

How Does TerraCycle Collect Waste?



TERRACYCLE COLLECTIONS

TerraCycle's system generates innovative repurposing solutions for a range of waste streams and categories. Some examples include:

Food and Beverage



Home Care/Supplies



Protective Equipment
(Labs/Hospitals)



Electronics



Apparel



Beauty Care
(Hospitality/Hotels)



And many more!



SAMPLING OF TERRACYCLE PARTNERS



TerraCycle's Building

TerraCycle located at 121 New York in 2004. The building, had been empty for 3 years. Locating here rejuvenated a building, created jobs in the neighborhood and was extremely affordable. Since then we have installed eco-friendly HVAC and soon Solar Panels



Green Renovations

The office is made from reclaimed materials, saving money, impressing clients and raising employee morale and creating PR



In-House Recycling

TerraCycle recycles or composts 80-90% of the office waste. Increases morale, reduces WM management costs, provides PR opportunities.



Community Outreach

TerraCycle supports and sponsors local event. Does community outreach programs. Provides great consumer engagement, PR and morale boosters



Questions, Comments, Requests, Ideas?

Contact:

Albe Zakes

VP, Media Relations

+1.609.393.4252 x3701

Albe@terracycle.net

