

SOTI®

ONE PLATFORM - CONNECTING EVERYTHING

E-FOTA Solution on MobiControl

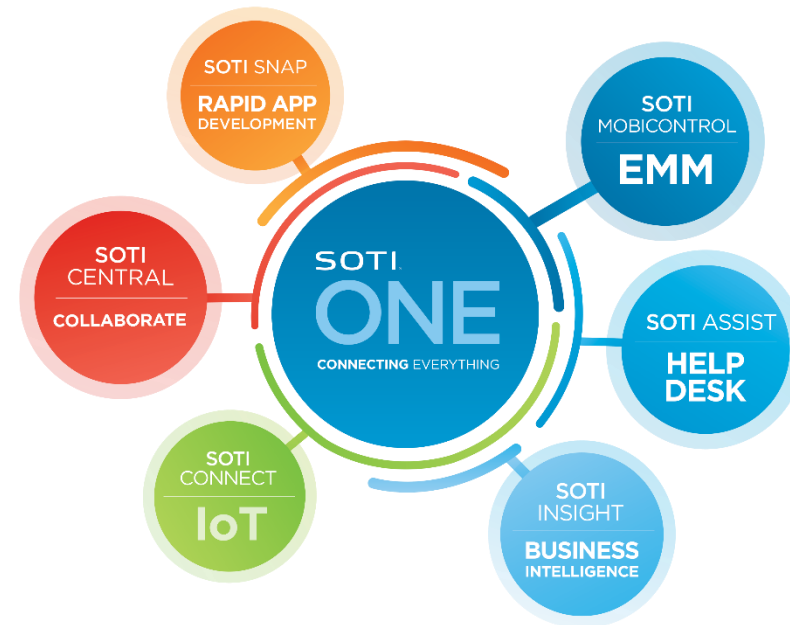
Ricky Garcia
Director, Strategic Alliances

SOTI Confidential - Only for use under NDA - Do not distribute



AGENDA

- Introductions
- What is FOTA?
- Introduction to E-FOTA
- E-FOTA License
- E-FOTA Enrolment
- E-FOTA Upgrades on MobiControl
- SOTI & Samsung



What is FOTA?

Firmware Over The Air:

- Currently all mobile enterprise devices in the world, be it Samsung, Apple, or any other smartphone, receives their firmware upgrade from a **Business-To-Consumer (B2C)** FOTA server.
- Enterprise businesses and administrators don't have control over the firmware upgrades that is being pushed over to their devices.

Current solution:

- MobiControl MDM includes a policy that allows the administrator to **block** the firmware upgrades. However, there is no proper way to correctly manage and control OS versions on the devices.



FOTA & MobiControl

FOTA & SOTI:

- Software upgrades being managed by end user and via a **Business-To-Consumer (B2C)** FOTA server.
- **MobiControl Policy**



Introduction to E-FOTA

Enterprise Firmware Over the Air:

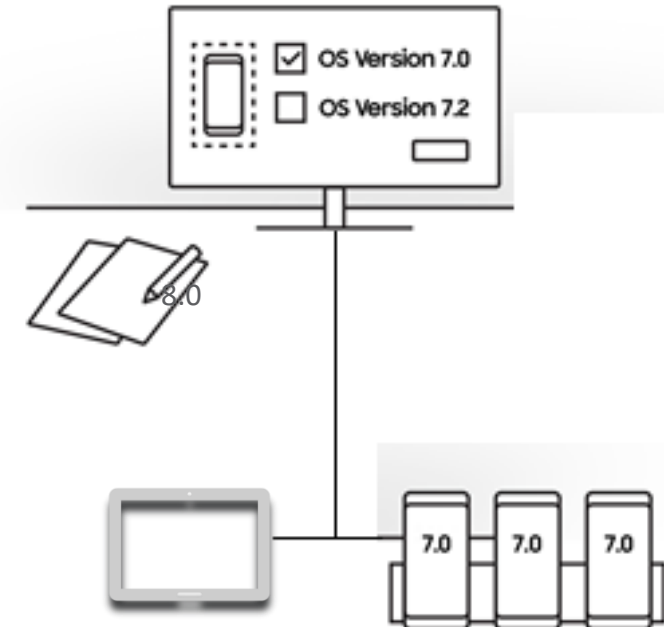
- E-FOTA primary goal is to enable MDM Administrators to have FULL control and manage all possible options of firmware upgrades on their enterprise devices.
- E-FOTA allows MDM Administrator to manage and restrict firmware updates on Samsung.

E-FOTA Benefits:

- IT administrators can test updates before deployment.
- Ensure compatibilities between in-house software (apps) and the new OS version. To avoid new OS unknown issues.
- IT admins can upgrade device OS versions without interrupting end-users.



SAMSUNG E-FOTA



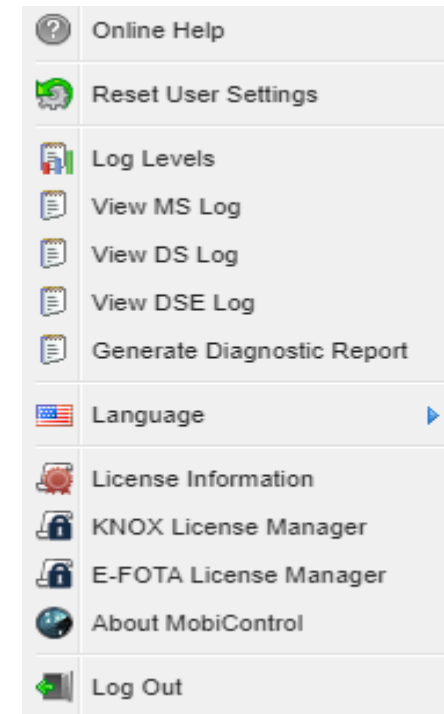
E-FOTA License Manager

SAMSUNG

Retrieve Oauth token to be used with the E-FOTA API's.

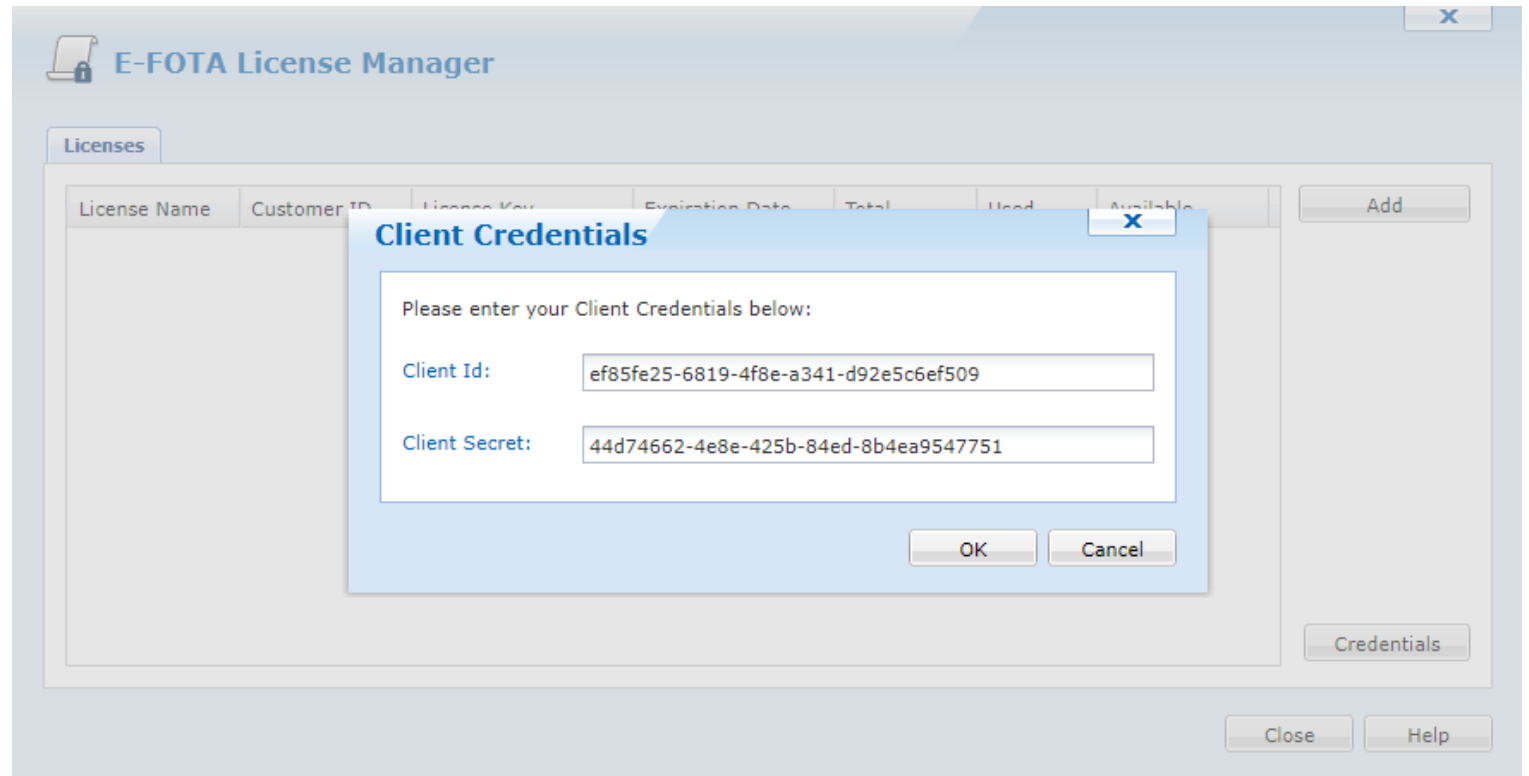
Add valid E-FOTA license.

- License Name
- Customer ID
- License Key
- Expiration Date
- Total count
- Used count
- Available count



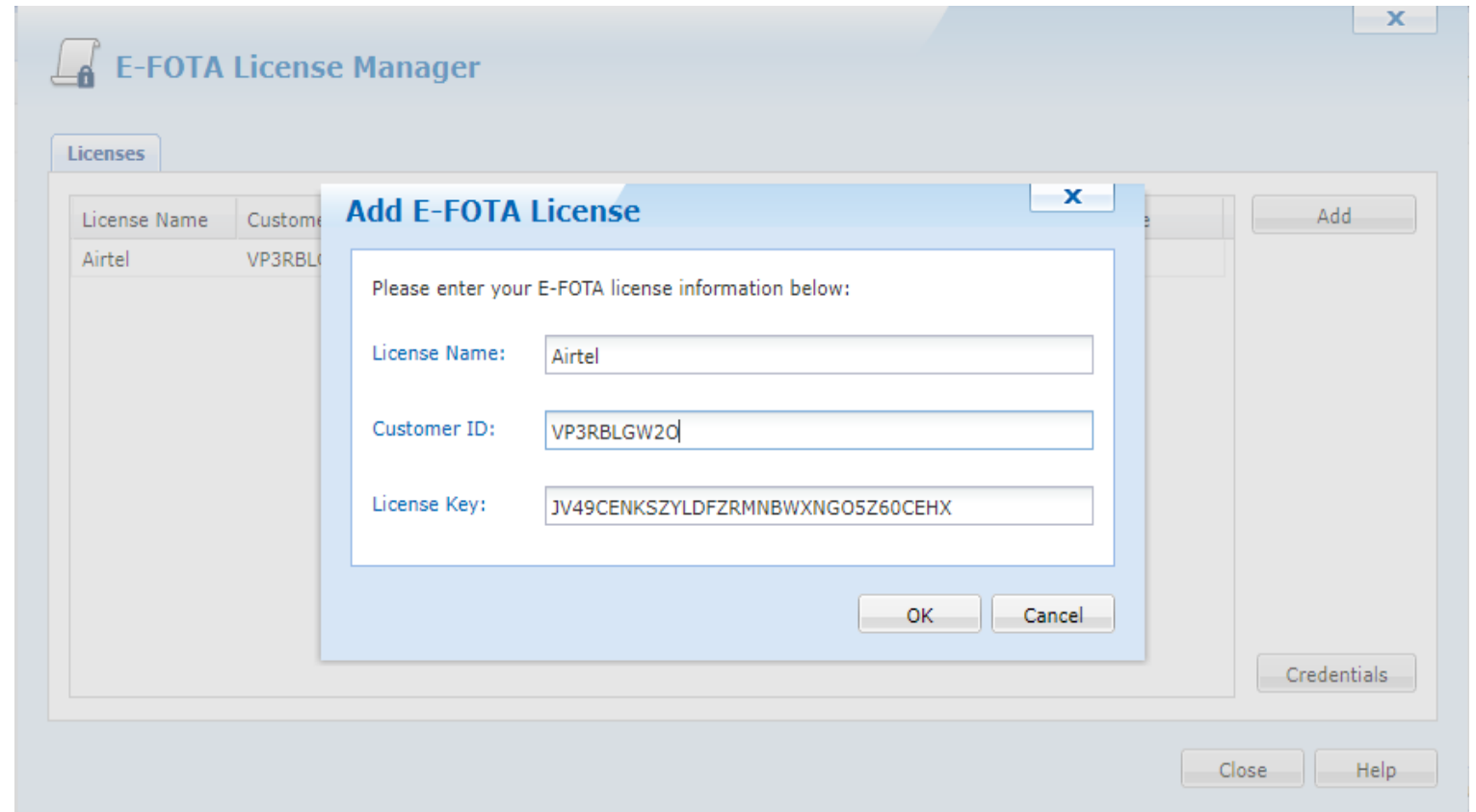
E-FOTA License Manager

SAMSUNG



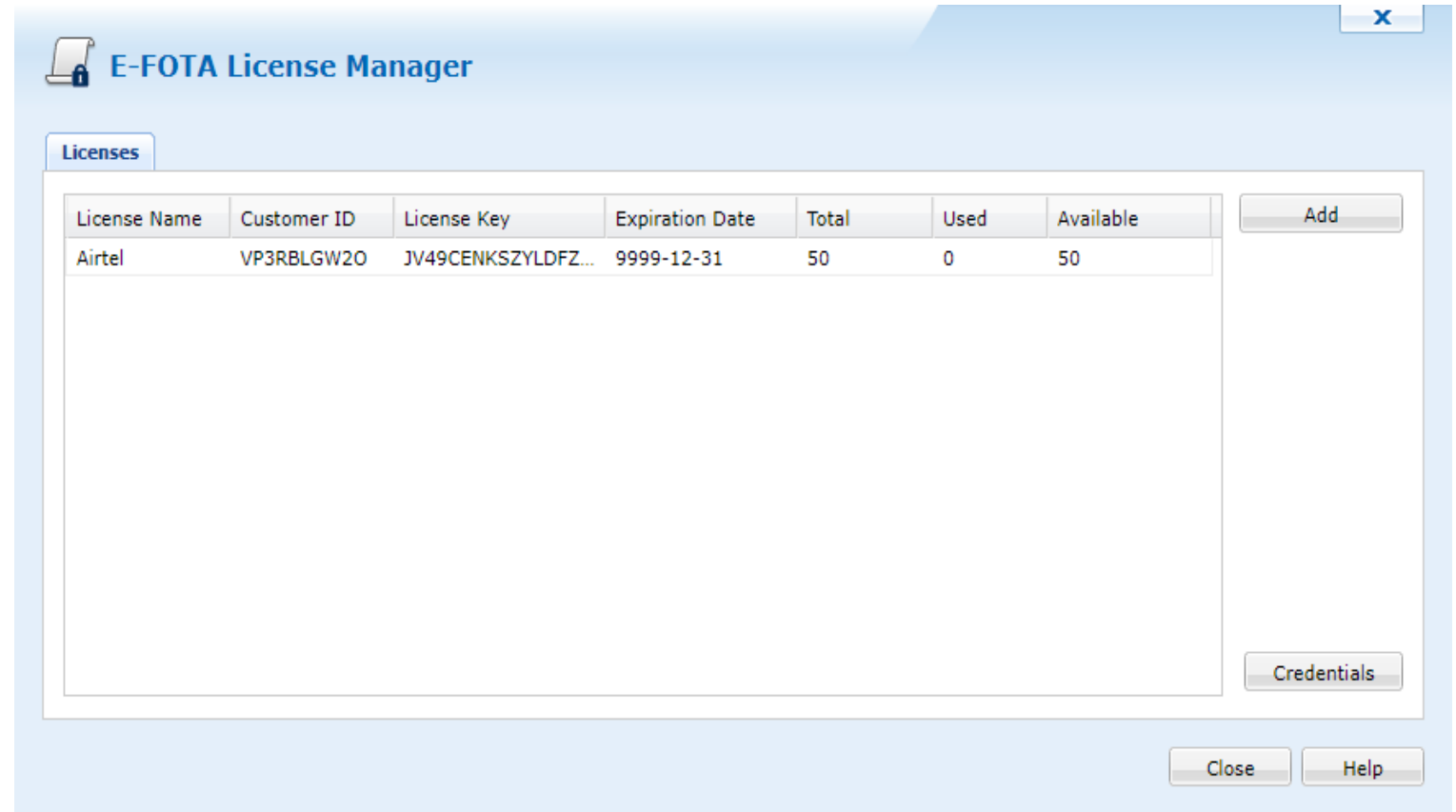
E-FOTA License Manager

SAMSUNG



E-FOTA License Manager

SAMSUNG



E-FOTA License Manager

Licenses

License Name	Customer ID	License Key	Expiration Date	Total	Used	Available
Airtel	VP3RBLGW20	JV49CENKSZYLDFZ...	9999-12-31	50	0	50

Add

Credentials

Close Help

E-FOTA Enrolment

STEPS:

1. Select a single device or multiple devices
2. Select Enroll in E-FOTA action
3. Choose the E-FOTA License to which you want to enroll the device(s)
4. Select "ENROLL IN E-FOTA" action

NOTE:

- Select a single device or multiple devices
1. If you select a Non-Samsung device, "ENROLL IN E-FOTA" action will not be displayed
 2. If you select a Samsung device that has a version lower than 7.0, "ENROLL IN E-FOTA" action will be displayed but this action will be disabled.
 3. If you select multiple devices, some are Non-Samsung devices + some Samsung devices with version lower than 7.0 + some Samsung devices with version 7.0 or greater, "ENROLL IN E-FOTA" action will be visible and enabled both.

E-FOTA & MobiControl

SOLUTION:

- Samsung created E-FOTA to fully manage mobile OS & firmware upgrades.
- MobiControl will offers the greatest E-FOTA solution experience (Samsung’s feedback)
- MobiControl enhances the E-FOTA solution as follow:

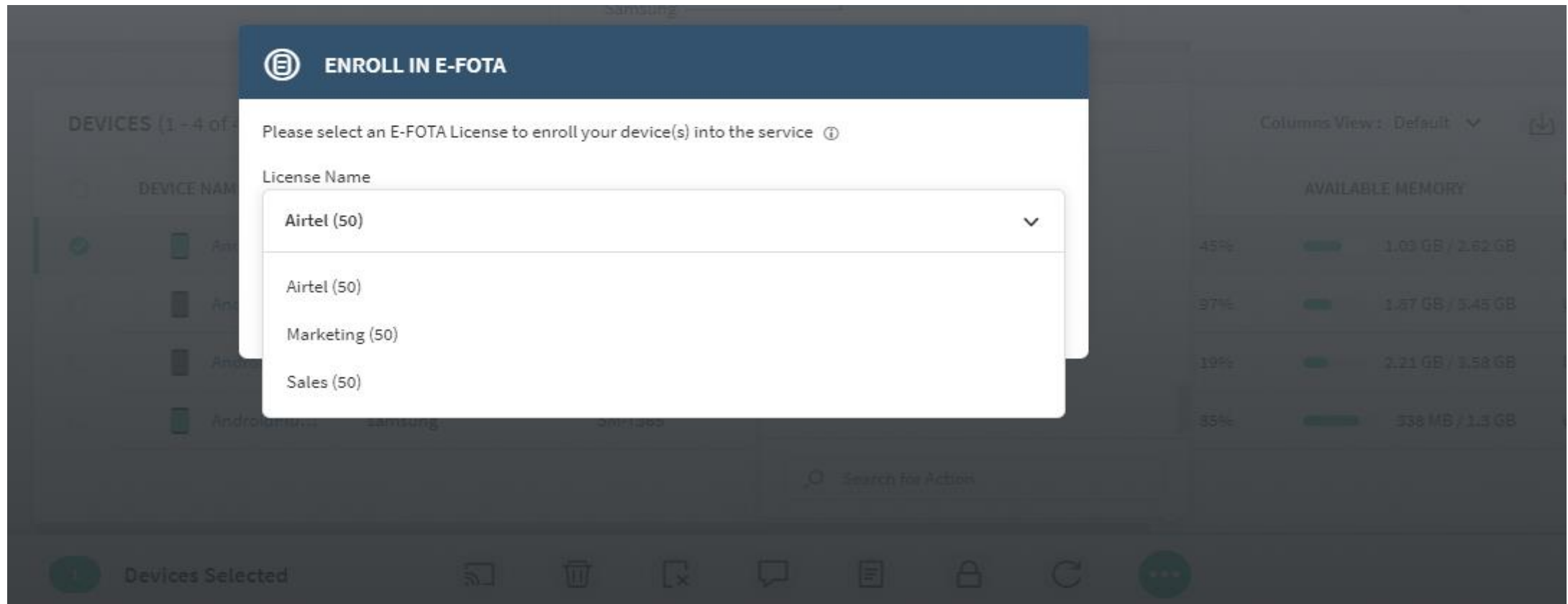


FEATURES	BENEFITS	ATRIBUTES
Forced Upgrades	Secure Upgrades	No downgrade Available*
Schedule Upgrades	User &/OR Group Upgrades	Requires License
Selective Upgrades	No user interaction	Regular & Kiosk Mode
Latest Upgrades	Elastic Search / Virtual Group	Automatic Enroll

E-FOTA Enrolment

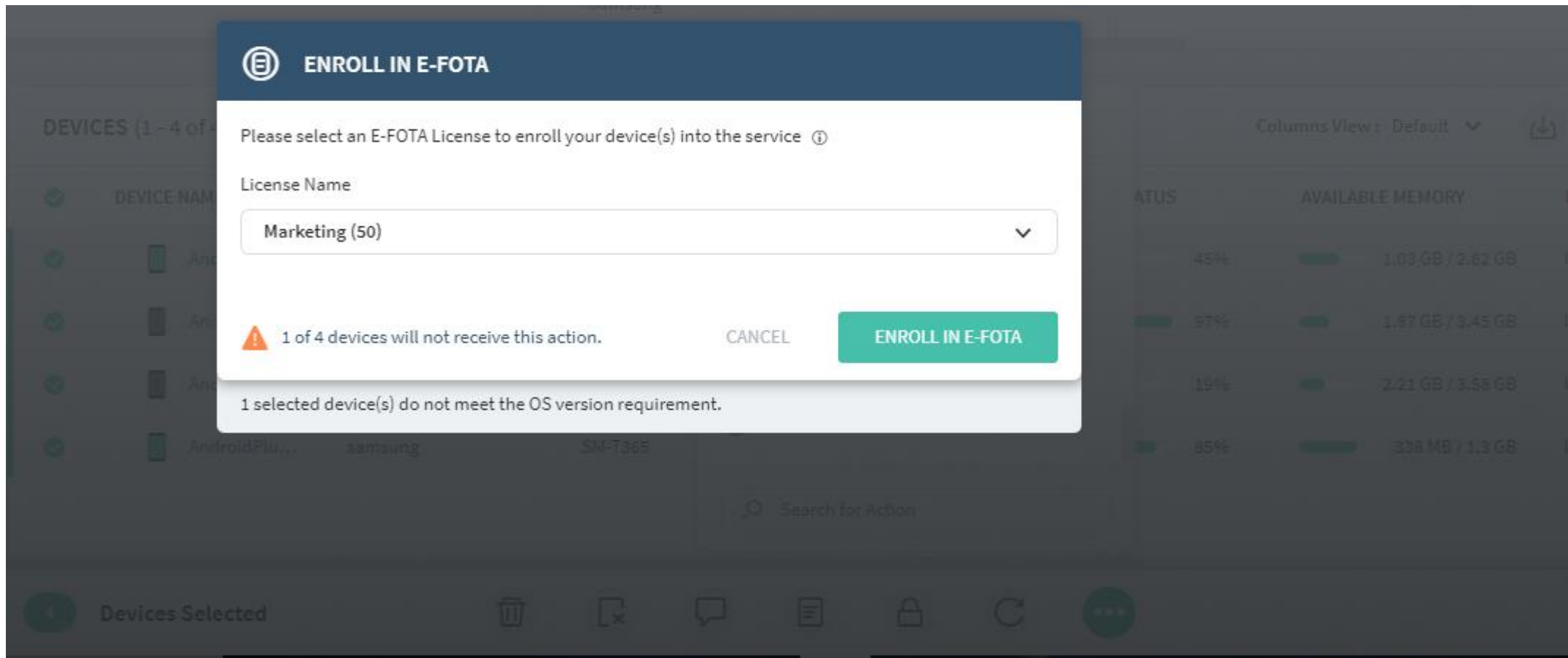


Devices must be enrolled as B2B device to use E-FOTA Service



E-FOTA Enrolment

Validate parameters before enrolling to E-FOTA in case of multiple device selection.



E-FOTA Upgrade Features

SAMSUNG



Latest
Upgrade



Selective
Upgrade



Forced
Upgrade

E-FOTA Latest Upgrade

SAMSUNG

MDM Admin selects a "Keep Firmware Updated" version and deploys the MDM policy to devices.

This type of upgrade requires end-user interaction on the device.

A screenshot of an MDM interface showing a "UPGRADE FIRMWARE" dialog box. The dialog box is titled "UPGRADE FIRMWARE" and contains the following elements:

- A header bar with a gear icon and the text "UPGRADE FIRMWARE".
- A prompt: "Select a firmware upgrade to be applied to the selected device(s)."
- A section titled "TARGET DEVICES MODELS (1)" containing a table with columns: MODEL, CARRIER, TARGET FIRMWARE, and SCHEDULE.
- A table with one row: MODEL: SM-G930U, CARRIER: Unknown, TARGET FIRMWARE: Keep Firmware Updated (dropdown), SCHEDULE: Not scheduled.
- A confirmation message: "1 of 1 device(s) will receive this action." with a green checkmark.
- Buttons: "CANCEL" and "UPGRADE FIRMWARE".

The background shows a list of devices with columns for device name, device name, carrier, model, version, schedule, and available memory.

E-FOTA Selective Upgrade



MDM Admin selects a "Specific Target Version" version and deploys the MDM policy to devices.

This type of upgrade requires end-user interaction on the device.



The screenshot shows a table of devices with a modal dialog for upgrading firmware. The dialog is titled "UPGRADE FIRMWARE" and prompts the user to select a firmware upgrade for the selected device(s). It shows a table of target device models with columns for Model, Carrier, Target Firmware, and Schedule. The selected device is SM-G930U, carrier is Unknown, and the target firmware is Nougat(Android 7.0) - 2017-11-1. The schedule is set to "Not scheduled". A green "UPGRADE FIRMWARE" button is visible at the bottom right of the dialog.

DEVICE NAME	MANUFACTURER	MODEL	CARRIER	TARGET FIRMWARE	SCHEDULE
AndroidPlus 00010	samsung	SM-G930U	Unknown		
AndroidPlus 00007	samsung	SM-G920I	Unknown		
AndroidPlus 00008	Zebra Technologies	MC40N0	Unknown		
AndroidPlus 00005	samsung	SM-N920T	Unknown		

MODEL	CARRIER	TARGET FIRMWARE	SCHEDULE
SM-G930U	Unknown	Nougat(Android 7.0) - 2017-11-1	Not scheduled

E-FOTA Force & Force Schedule Upgrade

SAMSUNG

MDM Admin selects "Force Upgrade" with specific "Target Version" & specified "Schedule".

This type of upgrade does NOT requires end-user interaction.

Forced
Upgrade

UPGRADE FIRMWARE

Select a firmware upgrade to be applied to the selected device(s).

TARGET DEVICES MODELS (1)

MODEL	CARRIER	TARGET FIRMWARE	SCHEDULE
SM-G950U	Unknown	Nougat(Android 7.0) - 2017-11-1	Not scheduled

1 of 1 device(s) will receive this action.

CANCEL UPGRADE FIRMWARE

SCHEDULE On

Configure the date range

From: 2018-01-16

To: 2018-01-22

Configure the time of the day

From: 12:00 am

To: 12:00 pm

SAVE

E-FOTA Fundamentals

Samsung:

- E-FOTA will require a license
- Devices must run at least Android OS 5.0 (Lollipop) to apply for Samsung *E-FOTA Advanced*, but OS 7.0 (Nougat) or later for Samsung E-FOTA on EMM.
- All carrier devices that use Samsung FOTA can also use E-FOTA. Currently, **ONLY** AT&T and Verizon do not use Samsung FOTA.

SOTI & MobiControl:

- SOTI is not re-selling the E-FOTA licenses
- Must have MobiControl 14.1.1 (to test BETA solution)
- Cloud instance can be provided for Beta
- Full Launch on MobiControl 14.2



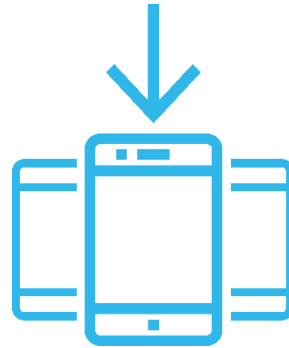
SOTI + Samsung

SAMSUNG

Samsung technology supported and enhanced by SOTI MobiControl



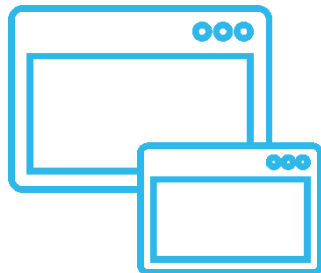
Samsung KNOX Protection



Knox Mobile Enrollment



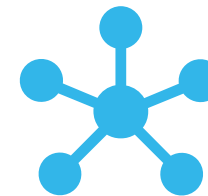
E-FOTA



Remote Control



Kiosk Mode



Samsung API & SDK (Tizen)

Thank you

Ricky Garcia