



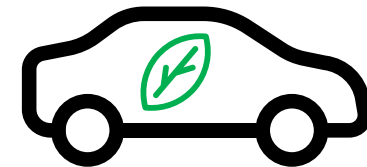
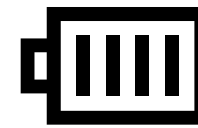
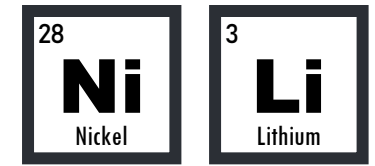
# NICKEL ROCK

RESOURCES INC.

A Canadian Battery Metals Exploration & Development Company



TSXV:NICL | OTCQB:NIKLF | FRA:NMK2



Investor Presentation: Winter 2020

# DISCLAIMER

Nickel Rock Resources Inc. (“Nickel Rock” or “the Company”), has taken all reasonable care in producing and publishing information contained in this presentation, and will endeavour to do so regularly. Material in this presentation may still contain technical or other inaccuracies, omissions, or typographical errors, for which the Company assumes no responsibility. Nickel Rock does not warrant or make any representations regarding the use, validity, accuracy, completeness or reliability of any claims, statements or information in this presentation. Under no circumstances, including, but not limited to, negligence, shall Nickel Rock be liable for any direct, indirect, special, incidental, consequential, or other damages, including but not limited to, loss of programs, loss of data, loss of use of computer or other systems, or loss of profits, whether or not advised of the possibility of damage, arising from your use, or inability to use, the material in this presentation. The information is not a substitute for independent professional advice before making any investment decisions. Furthermore, you may not modify or reproduce in any form, electronic or otherwise, any information, images and maps in this presentation, unless you have obtained written permission from the management of Nickel Rock.

No securities commission or other regulatory authority has in any way reviewed the information in this presentation and Nickel Rock makes no representation or warranty to that effect.

## **Forward-Looking Statements**

This presentation contains forward-looking statements, including but not limited to comments regarding predictions and projections. Forward-looking statements address future events and conditions and therefore involve inherent risks and uncertainties. Actual results may differ materially from those currently anticipated in such statements. While Nickel Rock has taken reasonable care to ensure that information presented in this presentation is current, the Company expressly disclaims any responsibility to update or revise any forward-looking statements whether as a result of new information, future events or otherwise.

## **Third Party Links**

Nickel Rock has provided links and/or URLs in this presentation to several other websites which are arms-length to the Company. The viewer should be aware that in linking to these outside websites, they are leaving the Nickel Rock presentation and that the Company is not responsible for the content of any other website.

## **Qualified Persons**

Jacques Houle, P.Eng., is the Q.P. who has reviewed and approved the technical contents of this presentation. Qualified Persons are defined in National Instrument 43-101 and based on standards established by the Canadian Institute of Mining, Metallurgy and Petroleum (CIM).

# COMPANY & DISTINCTION

Nevada Energy Metals Inc. is a Canadian based exploration company focused on green energy, high-value battery metals required for the electric vehicle (EV) market.

- Closed private placement Q3 2020 for gross proceeds of \$1M CAD
- \$1.1M CAD in treasury
- Recently acquired significant property package that's prospective for **awaruite**, a naturally occurring nickel-iron alloy important in the manufacture of environmentally-friendly EV batteries

## Modern. Green. Highly Efficient.

Like the next-generation battery metals industry, we're committed to lowering our carbon footprint. We work remotely or at our shared office environment.

Our low overhead is in sharp contrast to yesterday's less effective corporate models and contributes to retaining and enhancing shareholder value.

### Trading Symbols

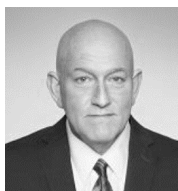
TSXV <b>NICL</b>	OTCQB <b>NIKLF</b>	FRA <b>NMK2</b>
---------------------	-----------------------	--------------------



**Awaruite:** naturally occurring nickel-iron alloy

# TEAM

We've assembled a corporate team and group of advisors that represent extensive experience in mineral exploration and development, raising capital, and building successful businesses.



**Robert Setter, President & CEO**

20+ years of business development, marketing and resource experience. Former Senior Financial Editor for Report on Mining. On the boards of 3 other listed mining companies.



**Ali H. Alizadeh, Director**

Senior geologist with extensive experience in exploration and project management. Responsible for a number of Uranium, Gold and Base Metal exploration projects during his career.



**Jay Oness, Director**

20-year career as Director, senior executive and consultant to publicly traded resource and non-resource companies. Currently VP, Bus/Corp Dev of Southern Silver Exploration Corp.



**Tina Whyte, Corporate Secretary**

20+ years' experience: corporate governance, continuous disclosure, financing transactions, regulatory filings and compliance. Corporate secretary with other publicly listed companies.



**Simon (Tak Tsan) Tso, CFO**

CFA Charterholder and Chartered Professional Accountant. Principal of Athena Chartered Professional Accountant Ltd. and co-founder of corporate finance firm Zeus Capital Ltd.

# ADVISORS



## **Bill Macdonald, Legal Advisor**

Founder and principal of Macdonald Tuskey, Corporate and Securities Lawyers. Former partner with Clark Wilson LLP. Director of several energy and mining companies.



## **Ursula Mowat, Geological Advisor**

Co-recipient of H.H. “Spud” Huestis Award (2015) for identifying and starting development of a new type of nickel deposit – awaruite – exemplified by FPX Nickel’s Decar Project in central BC.



## **Alan Morris, Geological Advisor**

Certified Professional Geologist with 37+ years in minerals industry. Experience with lithium brine deposits in Nevada. Owner of Ruby Mountain GIS (property evaluations and acquisitions).



## **Bill Morton, MSc. P.Geo., Geological Advisor**

40+ years in mining and geoscience. Nearly 20 years in senior management for publicly traded resource companies. Past involvement with major metal exploration projects across Canada, the US and Mexico.



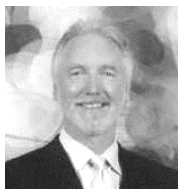
## **Tim Fernback, Financial Advisor**

CPA and CMA with 25+ years of finance experience as Director and officer of public and private companies. Mining consultant and former senior executive in investment banking and VC sectors.



## **Jacques Houle, P.Eng., Geological Advisor & QP**

42 years of experience in exploration and mining industry, including 13 years at management level, 5 years U/G mine geology, 3 years with government, and 17 years as an independent consultant and QP.



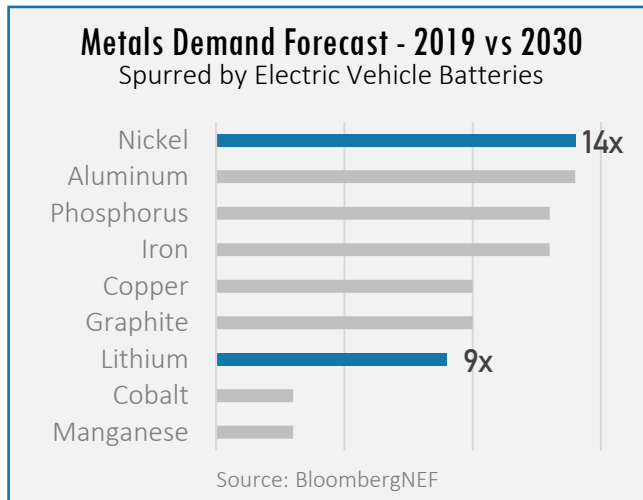
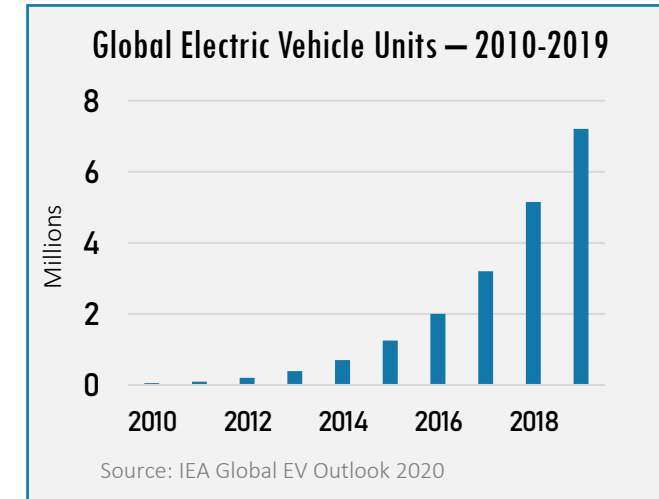
## **J. Malcolm Bell, Geological Advisor**

50+ years of industry experience as principal, senior officer or Director. Managing director of Malcolm Bell & Associates Ltd., which arranges and sources capital for private and public companies.

# BATTERY METALS MARKET: GROWING DEMAND

The electronics and energy storage sectors are significantly driving the surging demand for battery metals. But the biggest story today is the growing demand from electric vehicles (EVs).

- Supportive policies and technology advances have expanded the adoption of EVs over the last decade
- EV sales in 2019 were up 40% over 2018<sup>1</sup>

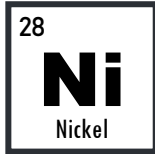


Nickel Rock Resources is focused on nickel and lithium. These two battery metals are forecast to experience rapid growth over the coming decade as the EV and battery sectors expand.

- In 2019, demand from EV batteries was 17 kt for lithium and 65 kt for nickel; by 2030, it's expected to jump to 185 kt for lithium and 925 kt for nickel<sup>1</sup>
- In October 2020, Joe Biden told US miners he would support boosting domestic production of metals used to make electric vehicles<sup>2</sup>

1. International Energy Agency Global EV Outlook 2020; 2. <https://www.mining.com/web/biden-campaign-tells-miners-it-supports-domestic-production-of-ev-metals/>

# BATTERY METALS MARKET: NICKEL & LITHIUM

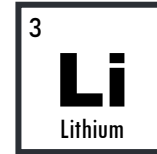
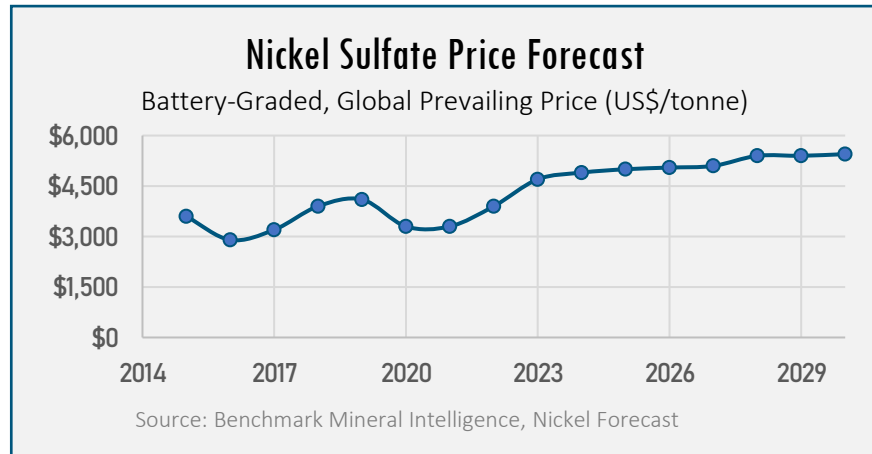


Automakers are moving towards higher nickel chemistries in their EV batteries as a more sustainable energy delivery solution.

- Nickel's primary use was in the manufacture of stainless steel but in recent years it has become increasingly important in EV batteries
- Nickel in batteries provides higher energy density, storage at lower cost, and longer drive ranges<sup>1</sup>

*“Wherever you are in the world, please mine more nickel and don't wait for nickel to go back to some high point that you experienced some five years ago or whatever, go for efficiency.”*

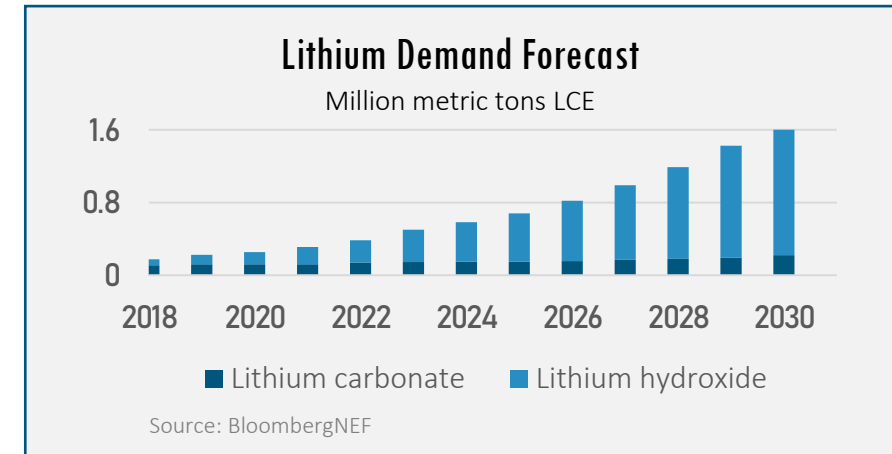
– Elon Musk, Tesla CEO



Passenger vehicles powered by lithium-ion batteries globally: 10% by 2025, 27% by 2030 with 58% market penetration by 2050.<sup>2</sup>

- The cost of lithium-ion battery packs has dropped by 87% since 2010, making them more attractive to manufacturers
- Automakers are concerned about suppliers' ability to meet ongoing lithium demand<sup>2</sup>

*“Tesla drew attention to the raw materials needed to make electric-vehicle batteries when it signed a sales agreement with [Australia's] Piedmont Lithium to secure about a third of the startup's production for up to 10 years, even though its mine isn't operational yet.”<sup>2</sup>*



1. NickelInstitute.org; 2. <https://www.marketwatch.com/story/lithium-is-at-the-heart-of-the-electric-vehicle-revolution-heres-how-the-market-for-the-raw-material-works-11603989355>

# NICKEL PROJECTS REGION: BRITISH COLUMBIA, CANADA

British Columbia has an abundance of minerals, skilled labour and the specialized equipment and facilities to support exploration and development.

- Mining-friendly regulations
- Stable political environment
- Carbon neutral hydro electricity
- Eco-friendly rail lines close to most mining districts
- World's largest concentration of exploration companies and mining professionals<sup>1</sup>
- Ranked the 3rd best mining jurisdiction in the world by The Mining Journal (2017)
- Harmonious working relationship with and largest private sector employer of Indigenous people in Canada<sup>2</sup>



## BC's Awaruite Advantage

Awaruite is a naturally occurring nickel-iron alloy that was first discovered in central British Columbia in 1983.

Awaruite is important in the manufacture of EV batteries that are environmentally friendly thanks to:

- Having little or no capacity to generate acid mine drainage due to containing little or no sulphides
- Not requiring chemical reagents/acid leaching for processing
- Waste rock actually absorbing carbon

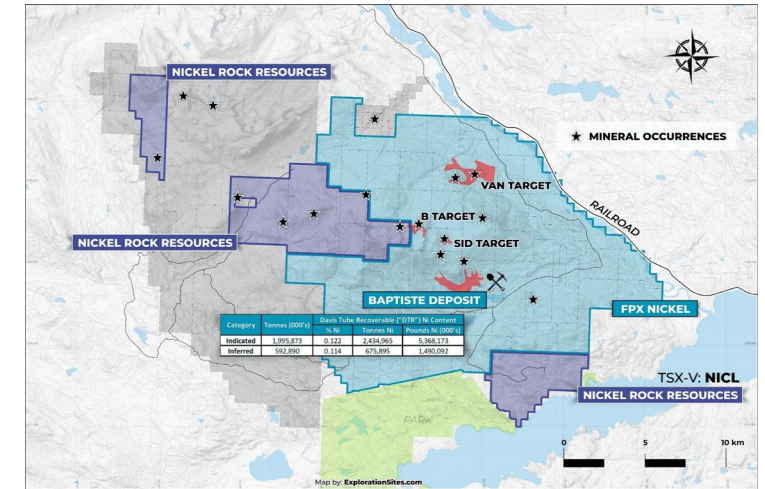
1. <https://www.britishcolumbia.ca/invest/industry-sectors/mining/>; 2. <https://www.mining.bc.ca/indigenous-relations>



# NICKEL PROJECT #1: HARD NICKEL GROUP

Our exploration targets are bordering or in close proximity to FPX Nickel Corp.'s Decar Project where their potentially carbon neutral Baptiste deposit has recently been confirmed as one of the world's most robust large-scale nickel projects.

- FPX has invested ~\$25 million to explore and develop their Decar Project to date
- Our property is partially underlain by rocks like those hosting FPX's Decar Project
- Metallic mineralization includes nickel, cobalt and chromium
- Some nickel mineralization occurs as **awaruite**, first discovered in the area in 1983
- Reports of exploration on and around the property are available dating back to 1974



## Overview

- Location:** Central BC, Canada
- Claims:** 9 mineral claims in 3 groups
- Total Area:** 7,525.32 hectares (~18,595 acres)
- Interest:** 100% on 6,125.32 hectares; option to acquire 100% interest on 1,400 hectares
- Royalties:** 2% NSR

## Region & Infrastructure

- ~100 km (~62 miles) NW of Fort St. James
- In the Omineca Mining Division
- Good access by paved and gravel roads & helicopter
- Canadian National Railway owns inactive rail line a short distance to the east
- Hydroelectric power lines cross the region

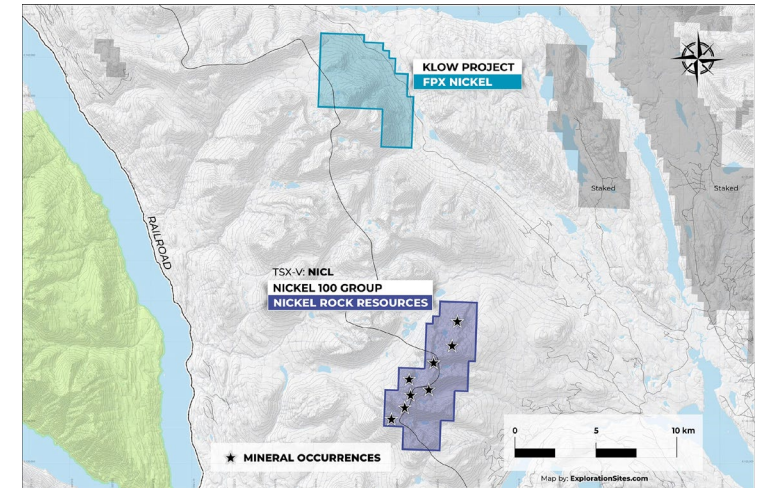
## Exploration Plans

- Currently writing 43-101 report
- Detailed exploration program to start in Spring 2021: rock and soil sampling, trenching & drill program
- Review historical data from systematic, ground-based exploration on the property (1987-2012) directed by renowned geologist **Ursula Mowat**
- Review data from **Geoscience BC's** QUEST-West project (2008-2009) that included the property: geophysical surveys; stream sediment re-analyses; data compilations

# NICKEL PROJECT #2: NICKEL 100 GROUP

Geologist Ursula Mowat completed a preliminary field work program on our claims in 2004 and confirmed the presence of elevated nickel, cobalt and chromium values in rocks and stream sediments.

- Nickel-cobalt mineralization not well explored but presence of **awaruite** is documented
- Claims cover all 17 known chromite showings, some of which are reported to be mineralized with platinum/palladium group and other rare, highly valuable elements



## Overview

- Location:** Central BC, Canada
- Claims:** 2 mineral claims in 1 group
- Total Area:** 3,134.7 hectares (~7,746 acres)
- Interest:** 100%
- Royalties:** 2% NSR

## Region & Infrastructure

- ~130 km (~81 miles) NW of Fort St. James
- Good access by forestry roads & helicopter
- BC Rail Line located ~12 km (~7.5 miles) to the south
- Hydroelectric power lines cross the region

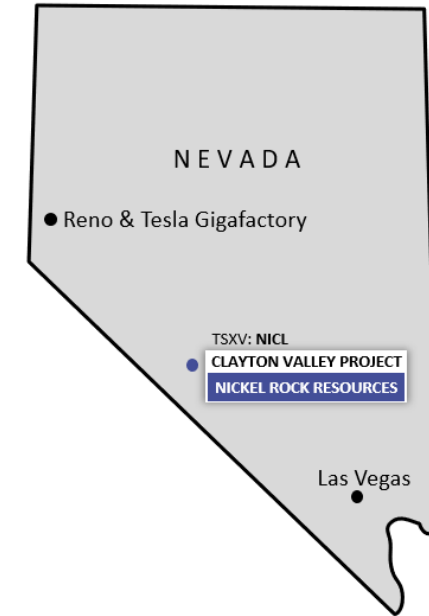
## Exploration Plans

- Currently writing 43-101 report
- Detailed exploration program to start in Spring 2021: rock and soil sampling, trenching & drill program
- Review historical data from field work program (2004) by geologist **Ursula Mowat**
- Review data from **Geoscience BC's** QUEST-West project (2008-2009) that included the property: geophysical surveys; stream sediment re-analyses; data compilations

# LITHIUM PROJECT REGION: NEVADA, USA

Ranked the 3rd best mining jurisdiction in the world in 2019 by the Fraser Institute, Nevada is ideally suited to supply domestic and Asian markets.

- Mining-friendly regulations
- Stable political environment
- Over 1,100 miles of eco-friendly rail lines
- Producing lithium since 1966 at the Silver Peak Mine
- Largest mining program in the US with 49% of the Bureau of Land Management's active mining claims<sup>1</sup>
- Strong ethic toward effective and successful reclamation (restoring land that has been mined to a natural or economically usable state)<sup>1</sup>



## Nevada's Gigafactory Advantage

Tesla's Gigafactory manufactures lithium-ion batteries for its vehicles and energy storage products.

The Gigafactory was born out of necessity to supply Tesla with enough batteries for their projected vehicle demand.

Tesla broke ground in 2014. By mid-2018, Gigafactory 1 was the highest volume battery plant in the world.

The factory is designed to be a net zero energy and primarily powered by solar.<sup>2</sup>

1. <https://www.blm.gov/programs/energy-and-minerals/mining-and-minerals/about/Nevada>; 2. [https://www.tesla.com/en\\_CA/gigafactory](https://www.tesla.com/en_CA/gigafactory)

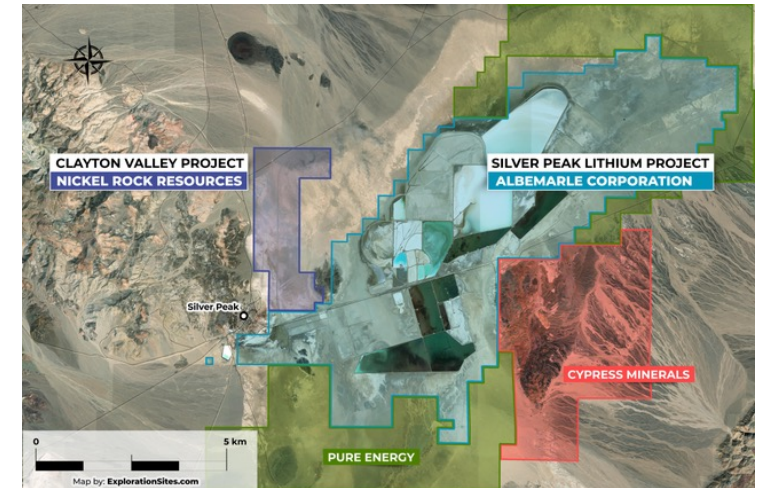
# LITHIUM PROJECT: CLAYTON VALLEY PROJECT

Our claims in Clayton Valley are bordering or in close proximity to the Silver Peak Lithium Project (Albemarle Corporation), home to the only producing lithium mine in North America.

Clayton Valley's lithium deposit is contained in underground reservoirs (aquifers) in the form of a salty groundwater (brine) that features high levels of lithium.

*"The property has strong potential to host Lithium brine deposits in favorable geologic horizons within the basin fill. Another possible target is lithium enriched clay within the fill package and potentially in previous high stands of the playa."*

– 43-101 Technical Report by Alan Morris, CPG, QP, April 2016



## Overview

<b>Location:</b>	Clayton Valley, Nevada, USA
<b>Claims:</b>	77 placer claims in 1 group
<b>Total Area:</b>	~623 hectares (~1,540 acres)
<b>Interest:</b>	100%
<b>Royalties:</b>	none

## Region & Infrastructure

- ~344 km (~214 miles) to Reno (NW) and Las Vegas (SE)
- ~315 km (~196 miles) to Tesla Gigafactory (outside Reno)
- Excellent access by paved highway and country roads
- Electrical substation nearby
- Accessible year round

## Exploration Plans

- Detailed exploration program to start in Spring 2021: rock and soil sampling, trenching & drill program
- Exploration concept: the inferred graben (valley) below our claims is a sub-basin of the larger Clayton Valley basin and may represent a secondary trap for lithium brines within the greater system
- Review historical exploration data, including 25-foot-thick zone of volcanic ash onsite reportedly similar to the Main Ash Aquifer in the Clayton Valley lithium operation<sup>1</sup>

1. <https://nickelrockresources.com/2017/08/01/nickel-rock-resources-inc-retains-100-interest-in-77-claims-at-clayton-valley/>

# SHARE STRUCTURE & PERFORMANCE

## Share Structure

Issued & Outstanding  
**32,484,153**

Stock Options Outstanding  
**4,057,500**

Warrants Outstanding  
**25,445,000**

Fully Diluted  
**61,986,653**

## Share Performance\*

**Market Cap:** \$5.49M

**Price:** \$0.17

**52-Week Low:** \$0.055

**52-Week High:** \$0.18

**Average Volume:** 27,655

\*TSXV:NICL as of Nov. 19, 2020

## Transfer Agent

**Odyssey Trust Company**  
835-409 Granville Street  
Vancouver BC, Canada V6C 1T2

## Auditor

**DMCL Chartered Professional Accountants**  
Suite 2700-650 West Georgia Street  
Vancouver BC, Canada V6B 4N9

## Legal

**William M. McDonald Attorney,  
Barrister & Solicitor**  
Suite 400-570 Granville Street  
Vancouver BC, Canada V6C 3P1

# INVESTMENT HIGHLIGHTS



- **Near-Term Catalysts:** Release of 43-101 report and ongoing news from planning, execution and results of 3 exploration programs in starting in Spring 2021
- **Finances:** \$1.1M CAD in treasury
- **Team & Advisors:** Extensive experience in mineral exploration and development, raising capital, and building successful businesses
- **Growing Demand:** Nickel and lithium forecast to experience rapid growth as the electric vehicle and battery sectors expand
- **Regions:** British Columbia and Nevada are world-class mining jurisdictions
- **Nickel Projects:** Significant property package prospective for **awaruite** (nickel-iron alloy) important in the manufacture of environmentally-friendly EV batteries
- **Lithium Project:** Bordering or in close proximity to the only producing lithium mine in North America
- **Efficient & Green:** Low overhead contributes to retaining and enhancing shareholder value

# CONTACT US



# NICKEL ROCK

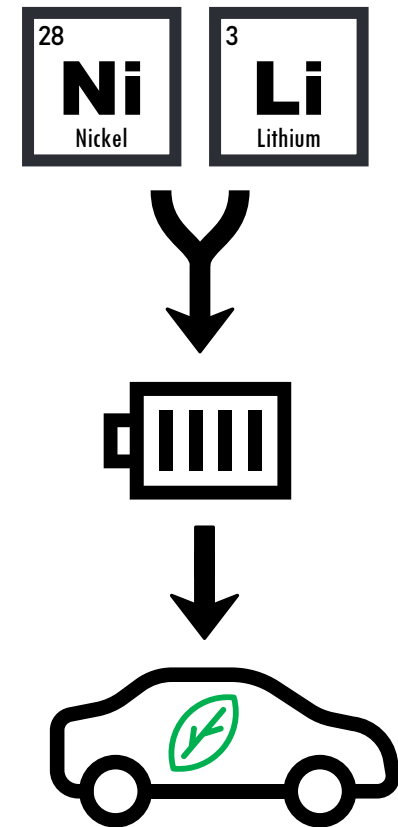
RESOURCES INC.

604-428-5690

[info@nickelrockresources.com](mailto:info@nickelrockresources.com)

[www.nickelrockresources.com](http://www.nickelrockresources.com)

#1220-789 West Pender Street  
Vancouver BC  
Canada V6C 1H2



TSXV:NICL | OTCQB:NIKLF | FRA:NMK2