



ANAFI WORK

THE 4K ULTRA-COMPACT DRONE SOLUTION FOR EVERY BUSINESS

PRODUCT MARKETING PRESENTATION – AUGUST 2018

AGENDA

VALUE PROPOSITION

AUDIENCE & USE CASES

PRODUCT PRESENTATION



ANAFI WORK

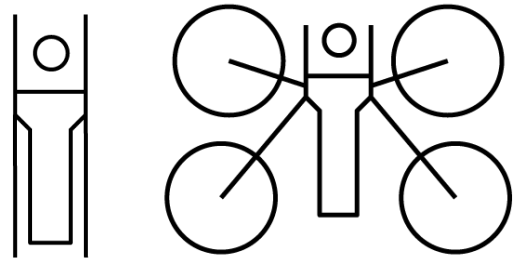
ANAFI WORK is the 4K ultra-compact drone solution for every business

ADVANCED IMAGING SYSTEM
CAPTURE 4K IMAGES FROM THE SKY
TO GET THE BEST AERIAL DATA

PERFORMANCE ON THE GO
ALWAYS READY TO FLY IN NO TIME

EASY-TO-USE
FOR EVERY PROFESSIONAL

EXPERIENCE 3D MODELING
3D INSPECTION AND
MEASUREMENTS WITH PIX4DMODEL



ANAFI WORK is a highly efficient tool for everyday business, improving the efficiency and safety of your aerial data collection thanks to a high-resolution 4K HDR 21MP camera with a 180° vertical orientation and a 2.8x lossless zoom

ANAFI WORK is an all-in-one kit coming in a compact shoulder bag. ANAFI WORK is the perfect on-the-go tool: it can be deployed in less than a minute and can work for 1h40 thanks to its 4 USB-C smart batteries of 25 minutes flight time each

ANAFI WORK is easy to carry in its compact, water resistant shoulderbag. ANAFI WORK is also easy to use in any situation: all professionals can fly intuitively with FreeFlight 6 app and benefit from automated, autonomous flight modes to empower their business with simplicity

ANAFI WORK comes with a Pix4Dmodel one year access. Any professional can easily and quickly create 3D models of buildings, thanks to ANAFI and Pix4Dmodel, take measurements, perform post flight inspection on the 3D or export the output results to their preferred architecture software.

AGENDA

VALUE PROPOSITION

AUDIENCE & USE CASES

PRODUCT PRESENTATION



USE CASES AND AUDIENCE

INSPECTION



AUDIENCE

- Roofers
- Inspection companies
- Small construction companies

USE CASES

- Quicker inspections of roofs, bridges, buildings: quickly identify damaged areas to focus on in hard to reach locations
- Live and safer inspection: no need to climb or to install scaffolding

USE CASES PIX4DMODEL

- Measurements of distances and surfaces
- Post flight inspection for reports
- Share 3d with partners and customers

REASONS TO BELIEVE

- 4K UHD video with HDR
- 21MP HDR camera sensor
- Lossless zoom for inspection at a safe distance from obstacles
- Zenith and Nadir views with +/-90° camera tilt

CONSTRUCTION SITE MONITORING



AUDIENCE

- Work site managers
- Small construction companies
- Architects
- Control & auditing agencies

USE CASES

- Inspection & monitoring of building project
- Sharing videos and photos with partners and customers for communication
- Promotion videos of a construction site

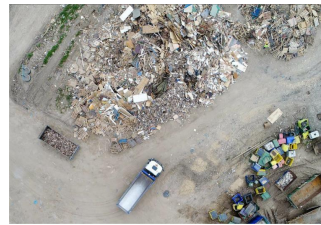
USE CASES PIX4DMODEL

- Measurements of distances and surfaces
- Post flight inspection for reports
- Export 3D models to draft projects
- Share 3D with partners and customers

REASONS TO BELIEVE

- 4K UHD video with HDR
- 21MP HDR camera sensor
- Flight Plan for autonomous WORK site monitoring

SITE SURVEILLANCE



AUDIENCE

- Site manager
- Recycling companies
- Private security companies

USE CASES

- Assessing the situation of an area or a warehouse
- Allow to cover large distances without the need for deploying on-foot resources
- Intrusion control

USE CASES PIX4DMODEL

- Measurements of distances and surfaces
- Post flight inspection for reports
- Share 3D with partners and customers

REASONS TO BELIEVE

- Live streaming video
- Lossless zoom for inspection at a safe distance from obstacles
- No need to be a seasoned pilot
- Quiet flights

PUBLIC SAFETY



AUDIENCE

- Firefighters
- Police
- Defense & military

USE CASES

- Reconnaissance of sites for mission preparation
- Intervention monitoring and analysis
- Incident forensics
- Fire monitoring

USE CASES PIX4DMODEL

- Measurements of distances and surfaces for mission preparation and reports
- Post flight inspection for incidents reports
- Up to date 3D plans for mission planning

REASONS TO BELIEVE

- Live streaming video
- Lossless zoom for inspection at a safe distance from obstacles
- Made for all types of missions: robust, compact
- Quiet flights

VIDEO PROD & PHOTO



AUDIENCE

- Independent photographers
- Small video production agencies

USE CASES

- Marketing videos
- Promotional videos
- Occasional videos and photos for small events
- Weddings

USE CASES PIX4DMODEL

- NA

REASONS TO BELIEVE

- Live streaming video
- Lossless zoom to capture images at a safe distance from obstacles
- Made for all types of missions: robust, compact, easy to carry and easy to fly
- Quiet flights

INSPECTION - USE CASES



Roof Inspection



Balcony inspection



Chimney inspection



Bridge Inspection

Perform safer, quicker and cost effective inspections of roofs, balconies, chimneys and bridges.

- Quicker inspections: quickly identify damaged areas to focus on
- Closer inspection thanks to the zoom
- No need to climb on the roof
- No need for scaffoldings
- Share images with your customers and partners
- Easy to use solution: No need to be a seasoned pilot to perform quick inspections

WORK SITE MONITORING - USE CASES



Houses



Building



Larger construction



Quickly and easily get aerial insights on your WORK site for better operations

- Monitor the WORK site from the sky for safer and cost effective operations
- Monitor the evolution of your WORK with images captured regularly from above
- Make comparisons between as planned and as built
- Share images with your customers and partners
- Easy to use solution: No need to be a seasoned pilot to perform quick monitoring missions

SITE SURVEILLANCE - USE CASES



Recycling center



Warehouse Surveillance



Ensure a mobile, quick-to-deploy and real-time surveillance from the sky for safer, thorough identification of potential security issues

- Get aerial visibility on sites to monitor risky operations or identify security issues
- Quickly deploy a flying camera to ensure the area is safe without the need for deploying on-foot resources
- Detect activities that might be missed by fixed or mobile ground sensors (aerial view with 4K HDR camera + zoom)
- Real-time monitoring and coordination through live streaming video
- Easy to use solution: No need to be a seasoned pilot to operate quick surveillance missions thanks to FreeFlight 6 mobile app or perform an automatic flight path using the FlightPlan option

PUBLIC SAFETY - USE CASES



Intervention Monitoring



Incident forensics



Crowd monitoring

Quickly and safely assess urgent situations or gather critical information from above

- Detect activities that might be missed by fixed or mobile ground sensors (aerial view with 4K HDR camera + zoom)
- Step-in anytime, anywhere thanks to unrivaled portability (lightweight, quick and easy-to-deploy)
- Real-time monitoring and coordination of operations through live streaming video
- Get aerial data on site for post operations reports
- Easy to use solution: No need to be a seasoned pilot to perform quick, autonomous missions thanks to FreeFlight 6 mobile app and FlightPlan option for easy automatic flights

AGENDA

VALUE PROPOSITION

AUDIENCE & USE CASES

PRODUCT PRESENTATION





ADVANCED IMAGING SYSTEM

ADVANCED IMAGING SYSTEM: CAPTURE 4K DATA FROM THE SKY TO GET THE BEST AERIAL INSIGHTS

HIGH RESOLUTION IMAGES FOR EVERY BUSINESS PURPOSE



- **4K HDR video & 21MP still high resolution camera to optimize the way you work:** rapid inspections of buildings and infrastructures, video production or intervention monitoring

- **3-axis hybrid stabilization system** to shoot ultra-smooth videos and take steady photos

- **Zenith and Nadir views with +/-90° camera tilt:** The camera has a controllable +/-90° tilt orientation and gives the possibility to capture images of hard to reach areas with the Zenith view (+90°) and Nadir view (-90°)

- **1.4x lossless zoom in 4K, 2.8x lossless zoom in 1080p** and up to **3x standard digital zoom** for photos and videos. Take a closer look at your target from a safe distance

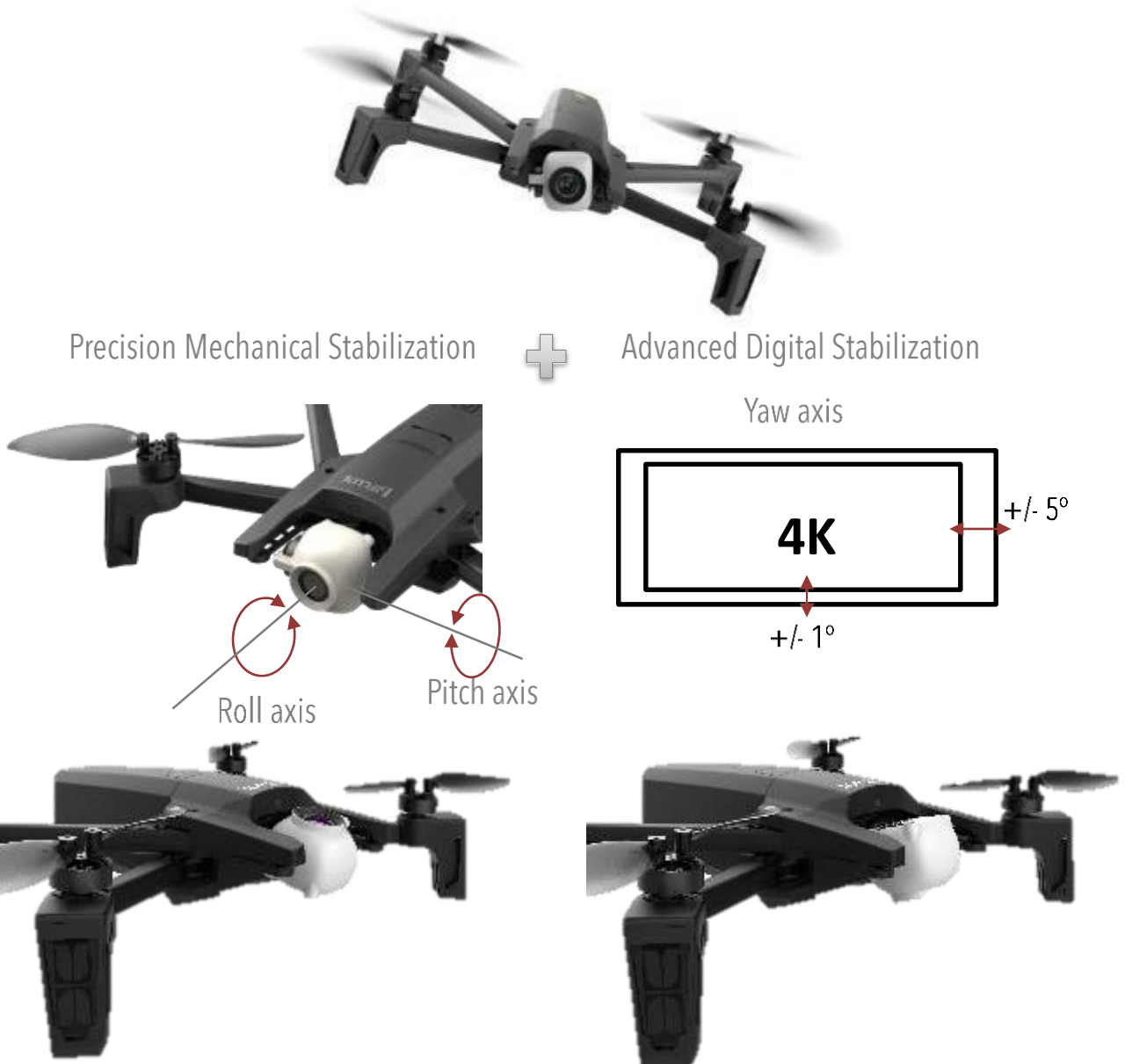
Zenith view

Nadir view



x2.0

3-AXIS HYBRID IMAGE STABILIZATION



- The best of mechanical and digital stabilization. Combination of miniaturized 2-axis mechanical gimbal empowered by an ultra precise digital stabilization ($\pm 1^\circ$)
- Ensures **ultra smooth videos and steady photos** by reducing any vibrations and rolling shutter effect
- **Robust stabilization performances.** Angular vibration is lower than $0,004^\circ$ and the stabilization of the angular speed is lower than $6^\circ/s$ in normal flight mode

Speed	Angular speed stabilization
Flight mode	$< 6^\circ/s$
Sport mode	$< 12^\circ/s$

ZENITH AND NADIR VIEWS WITH +/-90° CAMERA TILT

Zenith: upward view



Nadir: downward view



- **ZENITH and NADIR views** thanks to the 180° tilt of the camera which is unique for a drone of this category
- **Camera orientation:** 180° tilt from -90° to +90° vertically
- **New inspection possibilities** : inspect under a bridge or a balcony, perform roof inspection and always get the best angle view on any of your projects

Use Case: you no longer need to block off access to a inspection site or rent costly equipment such as a mobile crane or an aerial work platform. Your workflow is quicker and cost-efficient

LOSSLESS ZOOM FOR CLOSER INSPECTION

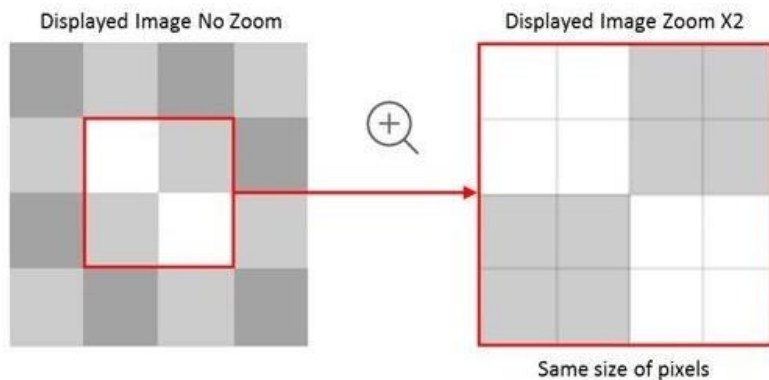


- Get a closer look in high definition. Lossless digital zoom up to x1.4 in 4K and x2.8 in 1080p. No deterioration of the image quality

Resolution	Zoom	Zoom type
4K	X1.4	Lossless digital
1080p / 720p	X2.8	Lossless digital
1080p / 720p	x3	Digital

- Lossless zoom allows you to get a closer look at your target from a safe distance, without any resolution loss

Use Case: zooming in on an area that requires precision without any resolution loss, means that you can detect cracks or defects in buildings or infrastructures at a safe distance from obstacles



PERFORMANCE ON THE GO



PERFORMANCE ON-THE-GO: ALWAYS READY TO FLY IN NO TIME

DESIGNED TO BE RELIABLE AND TRANSPORTABLE ON ALL YOUR MISSIONS



360° transmission system with
4 Dual bands antennas

- **All-in-one kit**, ready-to-fly solution: ANAFI WORK is the perfect on-the-go tool for business
- **4 x 25 min Flight Time Smart Battery** with intuitive charge level indicator for a combined flight time of 1 hour and 40 minutes
- **On the go USB-C charging system:** Portable charging system using USB Type-C to charge the drone with smartphones, laptops or powerbanks. Compatible with Power Delivery chargers for charge 70% faster than regular USB A
- **Multi-port USB charger** to charge your batteries simultaneously
- **Wind resistance up to 50km/h and quiet flights:** thanks to a powerful yet very quiet propulsion system (34% quieter than Bebop 2)
- **Omnidirectional smart transmission system** keeping a very robust connection thanks to 4-embedded dual bands antennas on the drone

EVERYTHING YOU NEED IN ONE KIT



- ANAFI WORK is an **all-in-one kit that contains all you need** for your professional projects
- This Parrot drone is ultra-compact, weighing in at only 320 g (0.7 lb). Its four legs can unfold in less than three seconds, making it **an ideal quick-to-deploy tool** for busy professionals
- ANAFI WORK has its **very own controller**, slot your smartphone into Parrot Skycontroller 3 for an intuitive flight experience
- We've created a **tailor-made shoulder bag** specially for ANAFI WORK so your drone solution is accessible everywhere you go

25MN FLIGHT TIME WITH SMART BATTERY



100% battery



75% battery

- **4 x 25 min - smart battery** with charge level indicator: professionals won't run out of battery life at a critical moment
- **The longest flight time on the market** for a drone with such an ultra-portable form factor
- **Portable charging system** using USB Type-C to charge the drone with smartphones, laptops or powerbanks
- **Fast and easy to charge** everywhere on-the-go, the charging system is 70% faster than standard chargers

ON-THE-GO USB-C CHARGING SYSTEM



- **Portable charging system** using USB Type-C to charge the drone with smartphones, laptops or powerbanks during or in-between your missions (optimize every second of your working day)
- **Compatible with Power Delivery chargers** for charge 70% faster than regular USB A



ANAFI can be charged with Powerbanks, AC chargers or computers

WIND RESISTANCE UP TO 50 KM/H & SUPER QUIET FLIGHT



- **Quiet flights** thanks its silent propellers, Anafi is **34% quieter** than Bebop 2
- **Foldable and enhanced flight control** with aerodynamic propellers and highly efficient brushless engines
- **Perfect stability against winds of up to 50 km/h & Super quiet flights** thanks to a powerful propulsion system

OMNIDIRECTIONAL SMART TRANSMISSION SYSTEM



360° transmission system with 4
Dual bands antennas

- **Omnidirectional transmissions system** provided by 4 dual-band antennas located on each foot
- **Smart frequency system:** avoids polluted or impeded frequencies for a better transmission between the controller and the drone
- **Very robust transmission system:** Anafi's omnidirectional transmission system guarantees a high quality video streaming on your smartphone up to 2km away. It avoids interferences to provide one of the best video feedbacks on the market



EASY-TO-USE

EASY TO USE: FOR EVERY PROFESSIONAL

WITH ANAFI WORK ALL PROFESSIONALS CAN FLY MANUALLY AND TAKE IMAGES EASILY



- **Ready to use and quick to deploy**, ANAFI WORK comes complete in its water resistant, compact shoulder bag, the Parrot drone is **easy to transport wherever you go**
- With ANAFI WORK, **all professionals can fly manually and take images easily**, using the intuitive mobile app, FreeFlight 6
- **Flying autonomously and capturing precise images is made easy** with the app's pre-integrated piloting modes: Touch&Fly, POI (Point of Interest) and Flight Plan
- Conduct **stress-free flights** thanks to the app's Geofence and Smart RTH features.

EASY TO CARRY IN ITS COMPACT SHOULDER BAG



- Cumbersome drone inspection solutions are a thing of the past. **ANAFI WORK's entire kit is compact**, the drone weighs only 320g and the controller 380g.
- The **shoulder bag protects your drone and batteries from the elements**, as the bag is completely water resistant.



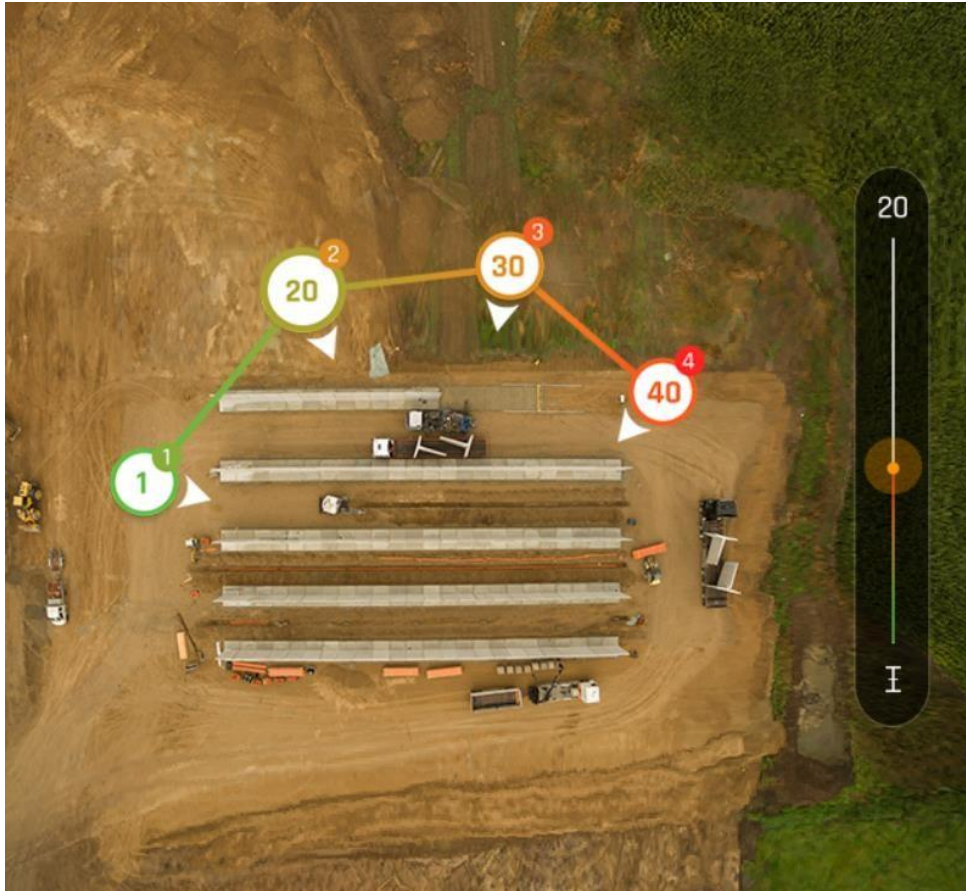
INTUITIVE MANUAL FLIGHTS WITH FREEFLIGHT 6



- **FreeFlight 6 offers a smooth and intuitive flight experience**, allowing you to perform intricate flights in difficult areas, stress free
- The ergonomic piloting interface: the app offers a wide range of flight solutions **adaptable to your level of piloting expertise**
- **Available on both iOS and Android**, Parrot's free piloting application, Freeflight 6 can be used on all smart devices

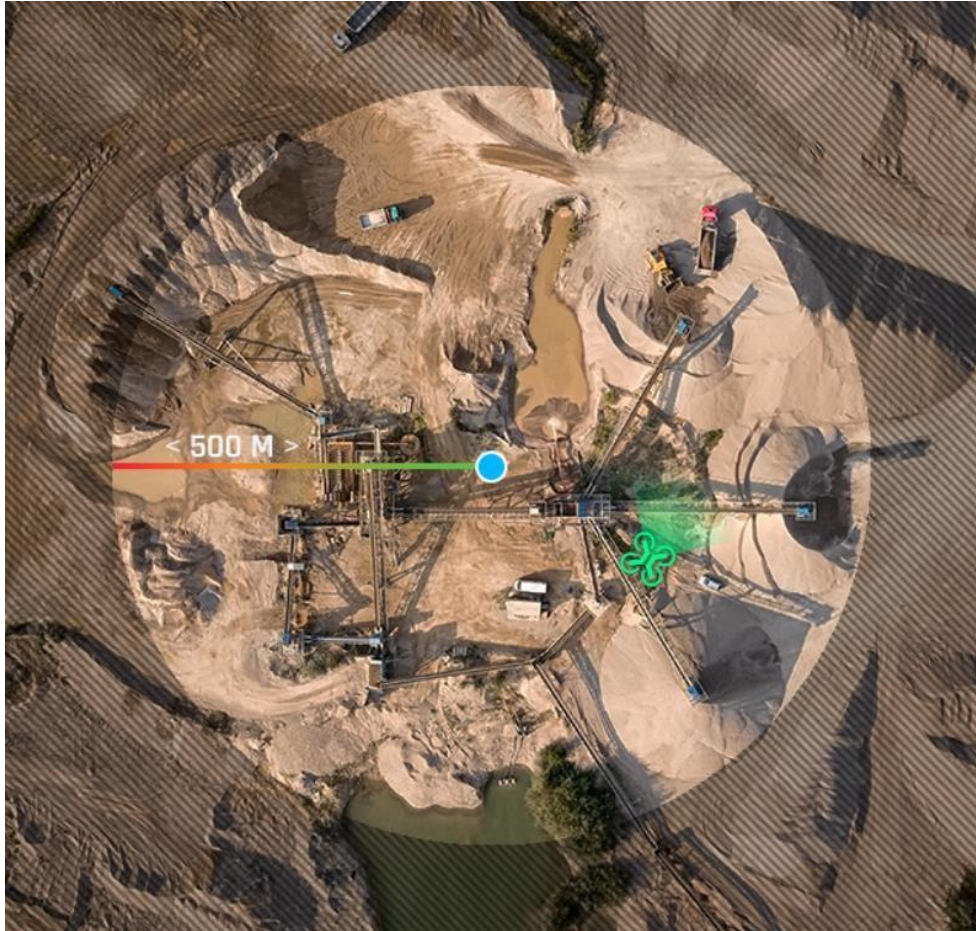


ACQUIRE PRECISE DATA IN FULLY AUTOMATIC FLIGHTS WITH FLIGHTPLAN



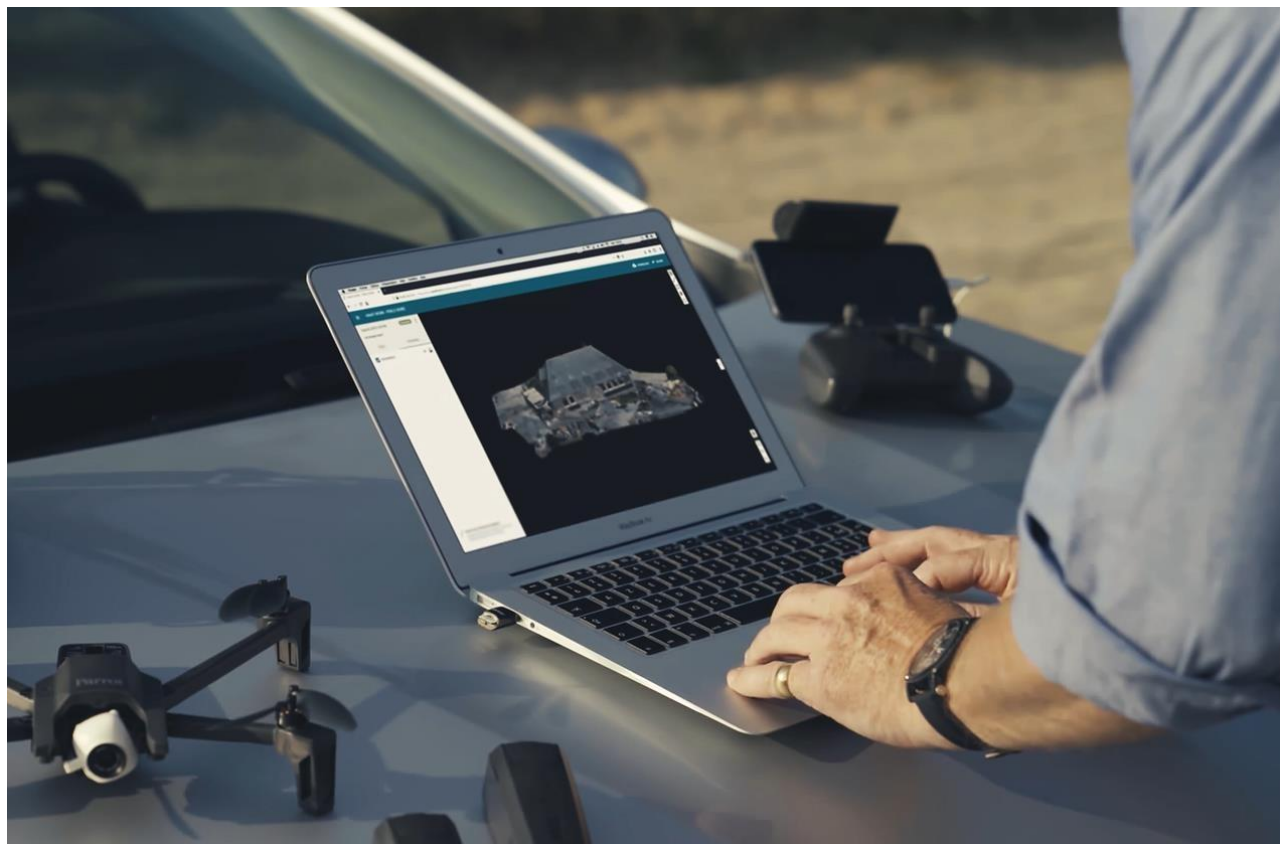
- With Flight Plan, Touch&Fly and POI, you can **obtain detailed data using fully automatic flights**
- **Flight Plan is the perfect automatic scouting tool**, helping you gain insights without you having to manually pilot the drone.
- **Multiple POI:** record the perfect shot by setting specific locations as Point of Interest (corners or tip of a roof, specific reliefs...)
- **Progressive course:** Your drone progressively modifies its orientation between two waypoints to have a smooth recording and usable data (videos or pictures)

STRESS-FREE MISSIONS AND SAFE FLIGHTS WITH GEOFENCE AND SMART RTH



- **Geofence:** define a specific zone for your flight with a maximum height, a maximum distance and make sure your drone stays in the defined mission area
- **Smart RTH:** ANAFI WORK is always able to return to its starting position (initial take-off position) by pressing a single button on the controller. Failsafe procedures also make sure the drone will come back to its initial take-off position in case of unexpected disconnection

EXPERIENCE 3D MODELING



EXPERIENCE 3D MODELING

ANAFI WORK COMES WITH A ONE YEAR ACCESS TO PIX4DMODEL



Pix4D**model**



- All professionals can easily and quickly create 3D models of buildings and infrastructures, thanks to ANAFI and Pix4Dmodel
- With this solution, you can accurately measure distances and surface areas, perform post-flight inspections on 3D models, share your markers or 3D models in a few clicks directly using any web browser
- The Pix4Dmodel software also allows you to export output results into your preferred architecture software
- Combined with ANAFI, Pix4Dcapture is an easy solution to plan automatic flights, collect accurate data autonomously and get the perfect inputs for Pix4Dmodel



Galileo
i n s t r u m e n t s

DISTRIBUIDORES AUTORIZADOS COLOMBIA

www.galileoinstruments.com.co