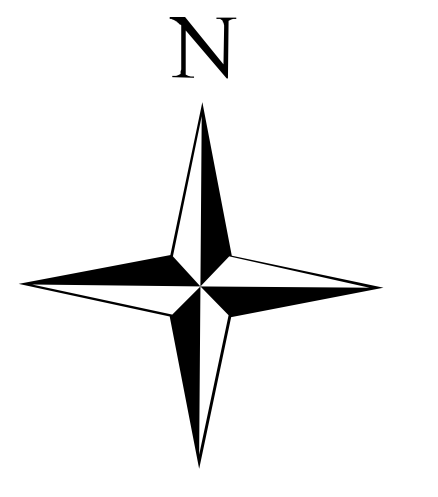
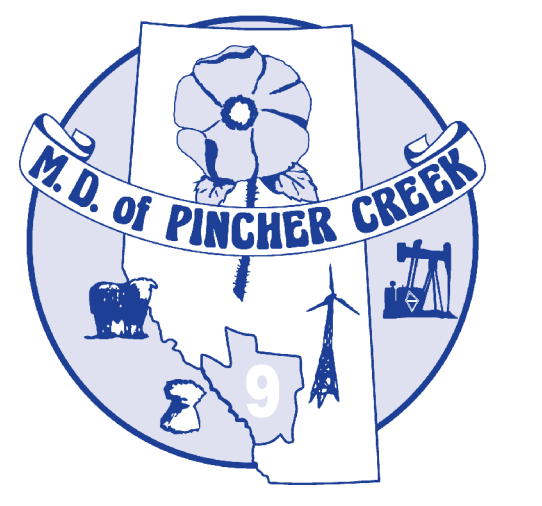
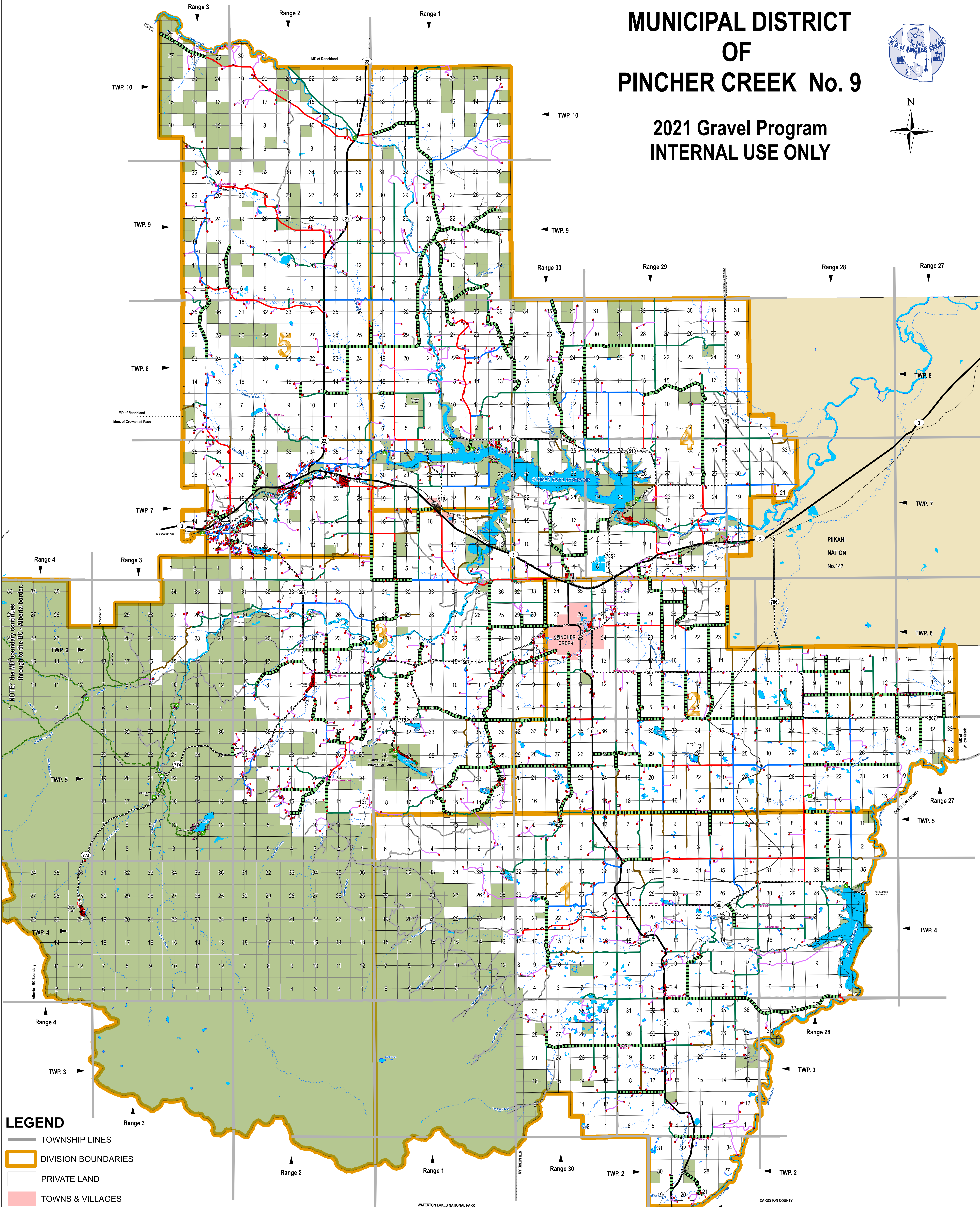


MUNICIPAL DISTRICT OF PINCHER CREEK No. 9



2021 Gravel Program INTERNAL USE ONLY



- LEGEND**
- TOWNSHIP LINES
 - ▭ DIVISION BOUNDARIES
 - ▭ PRIVATE LAND
 - ▭ TOWNS & VILLAGES
 - ▭ HAMLETS
 - ▭ ABORIGINAL LAND
 - ▭ CROWN LAND
 - ▭ WATER
 - ▭ CAMPGROUNDS & RECREATION AREAS
 - ▭ COMMUNITY HALLS
 - ▭ FORMER SCHOOL SITES
 - ▭ CHURCHES
 - ▭ HABITATION LOCATION
 - ▭ PRIVATE CAMPGROUND

- Access**
- Primary Highways
 - Secondary Highways
 - MD Arterial Roads
 - MD Collector Roads
 - MD Local Roads
 - Province Local Roads
 - MD Streets
 - MD Unimproved Roads
 - Private Roads
 - Private Campground Roads
 - Provincial Campground Roads
 - Province Streets
 - Castle Mt. Streets
 - Resource Roads

2021 Road Graveling

Arterial roads: 121.083 km
 - Volume at 100 m³/km = 12,108.30 m³
 - Volume at 150 m³/km = 18,162.45 m³

Collector roads: 129.337 km
 - Volume at 100 m³/km = 112,933.70 m³
 - Volume at 150 m³/km = 19,400.55 m³

Local roads: 150.251 km
 - Volume at 100 m³/km = 15,025.10 m³
 - Volume at 150 m³/km = 22,537.65 m³

Unimproved roads: 6.454 km
 - Volume at 100 m³/km = 645.40 m³
 - Volume at 150 m³/km = 981.10 m³

Total length of roads to be gravelled: 407.08 km
 Total volume at 100 m³/km = 40,708.00 m³
 Total volume at 150 m³/km = 61,062.00 m³

Scale: 1 : 65,000
 When printed on 42x60 inch paper



Information depicted is subject to change, therefore the MD Of Pincher Creek assumes no responsibility for discrepancies at time of use.

Copyright © 2020 Municipal District Of Pincher Creek No.9
 All rights reserved. No part of this publication may be reproduced, distributed, or transmitted in any form or by any means, including photocopying, recording, or other electronic or mechanical methods, without the prior written permission of the Municipal District Of Pincher Creek No.9.
 Produced by the MD Of Pincher Creek 2021-04-21
 Project File: C:\GIS\WorkSpace\PUW\DivisionMaps_Graveling\ProjectFiles\2021GravelProgram.mxd