



AFGHANISTAN



COUNTRY BRIEF

Current as of 2007

AFGHANISTAN





AFGHANISTAN



AGENDA

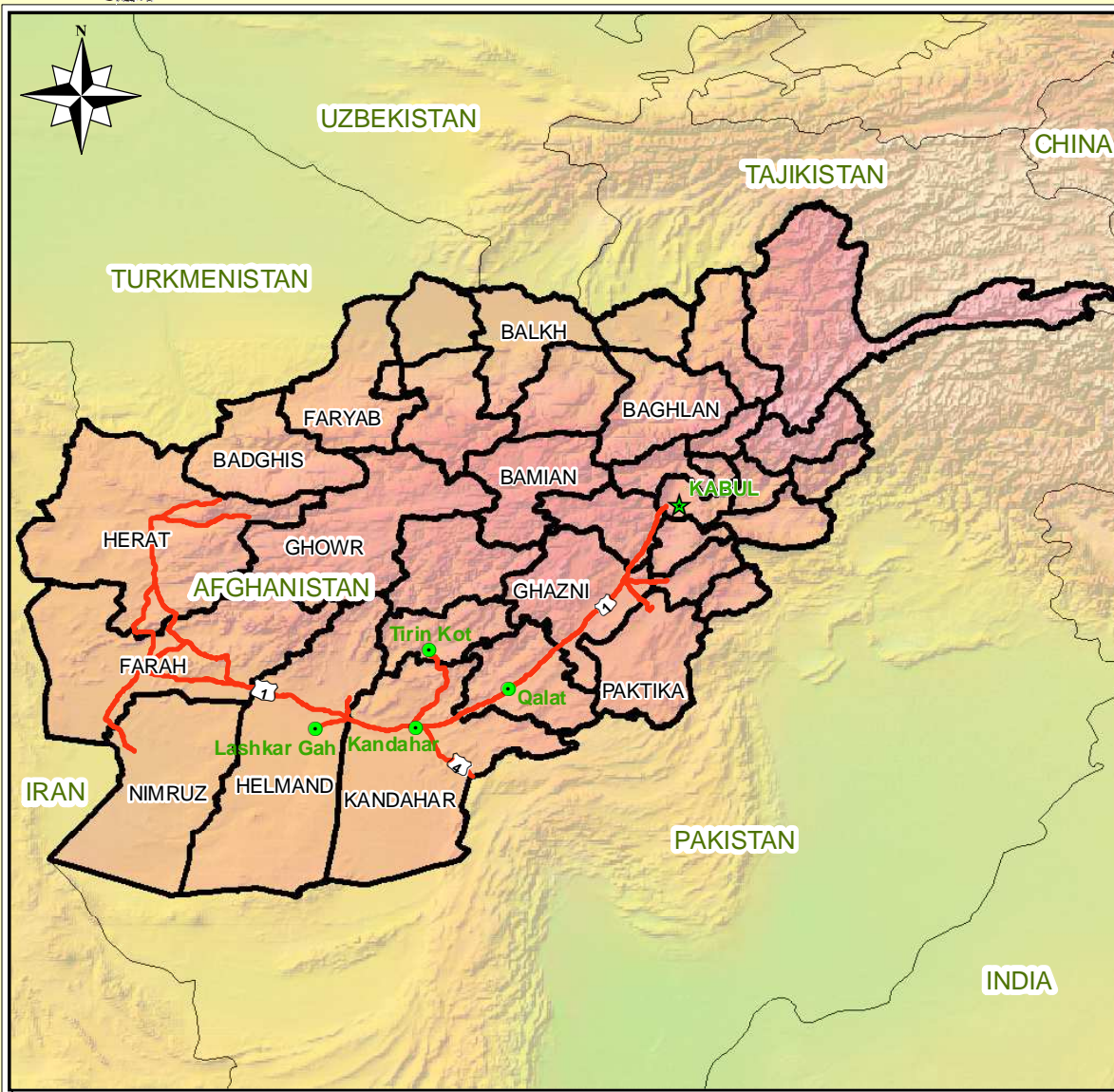
Orientation

Geographical Data

Weather Effects



AFGHANISTAN



ORIENTATION

Bordered by:

CHINA

PAKISTAN

IRAN

TURKMENISTAN

UZBEKISTAN

TAJIKISTAN



Capital



Provincial Capitals



AFGHANISTAN



RC SOUTH

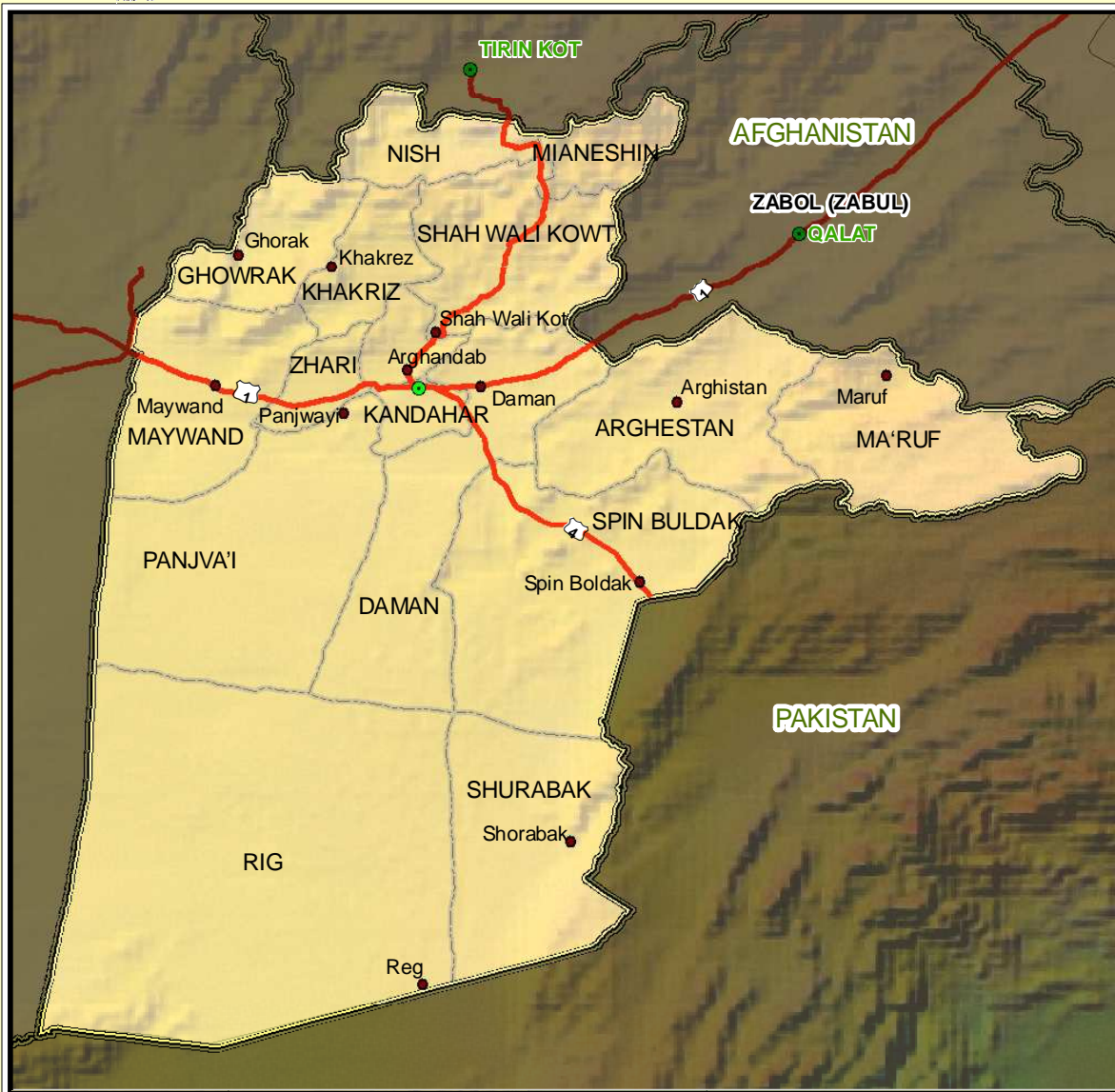
201,731 SQ KM

PROVINCES

Day Kundi
Uruzgan
Zabul
Kandahar
Helmand
Nimroz



AFGHANISTAN



KANDAHAR PROVINCE

54,000 SQ KM

16 DISTRICTS

Kandahar	Daman
Panjwayi	Zhari
Maywand	Ghowrak
Khakriz	Nish
Shah Wali Kot	Mianeshin
Shurabak	Spin Buldak
Arghestan	Maruf
Arghandab	Rig



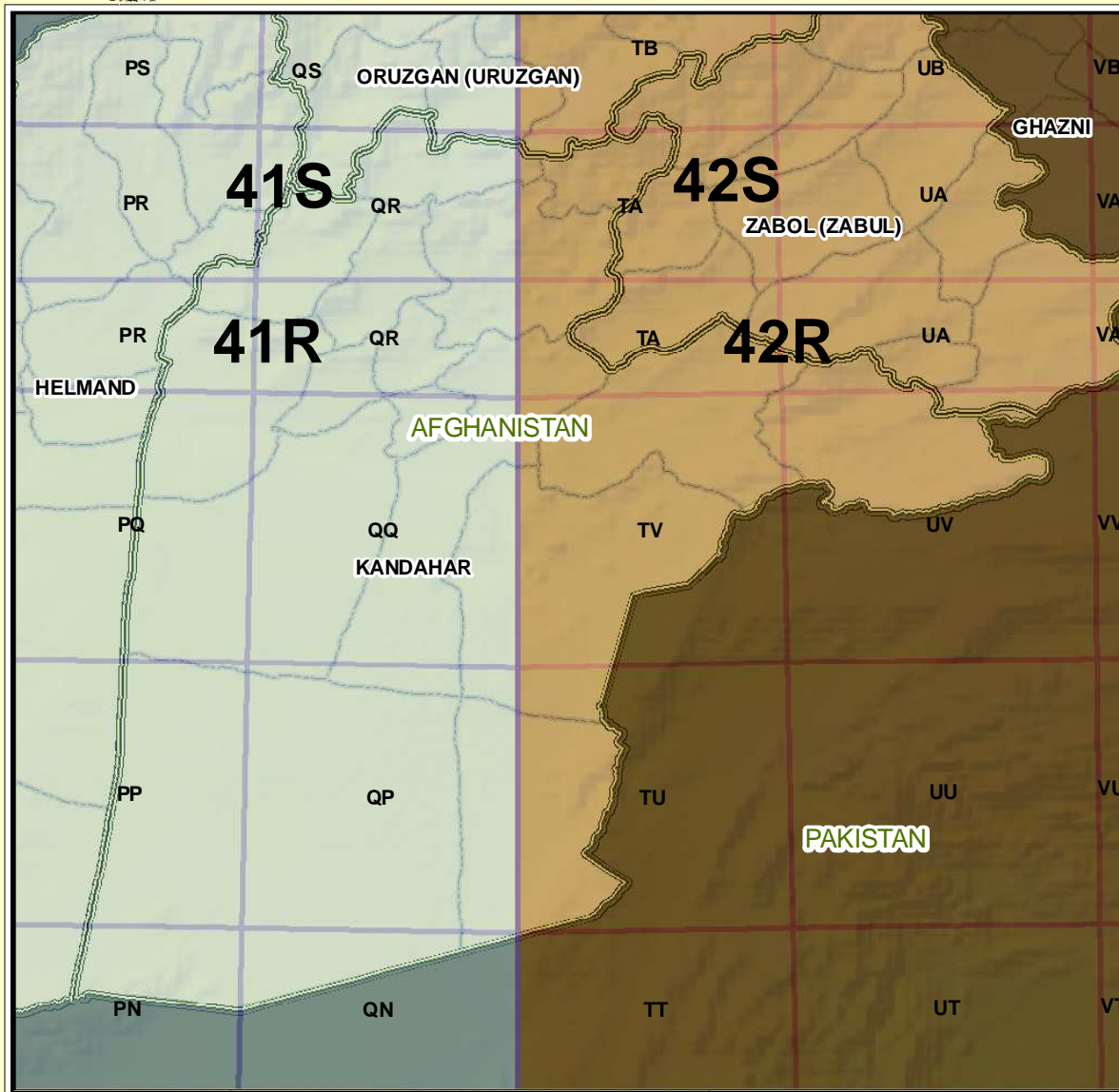
Provincial Capitals



District Centres



AFGHANISTAN



UTM/MGRS ZONES

Kandahar Province

4 UTM Zones

**17 – 100k MGRS
Identifiers**

**Include UTM Zone and
100,000m sq. identifier
in grid coordinates**

E.G. 41R QR 1234 5678



AFGHANISTAN



GEOGRAPHICAL DATA

Physiographic
Regions

Elevation

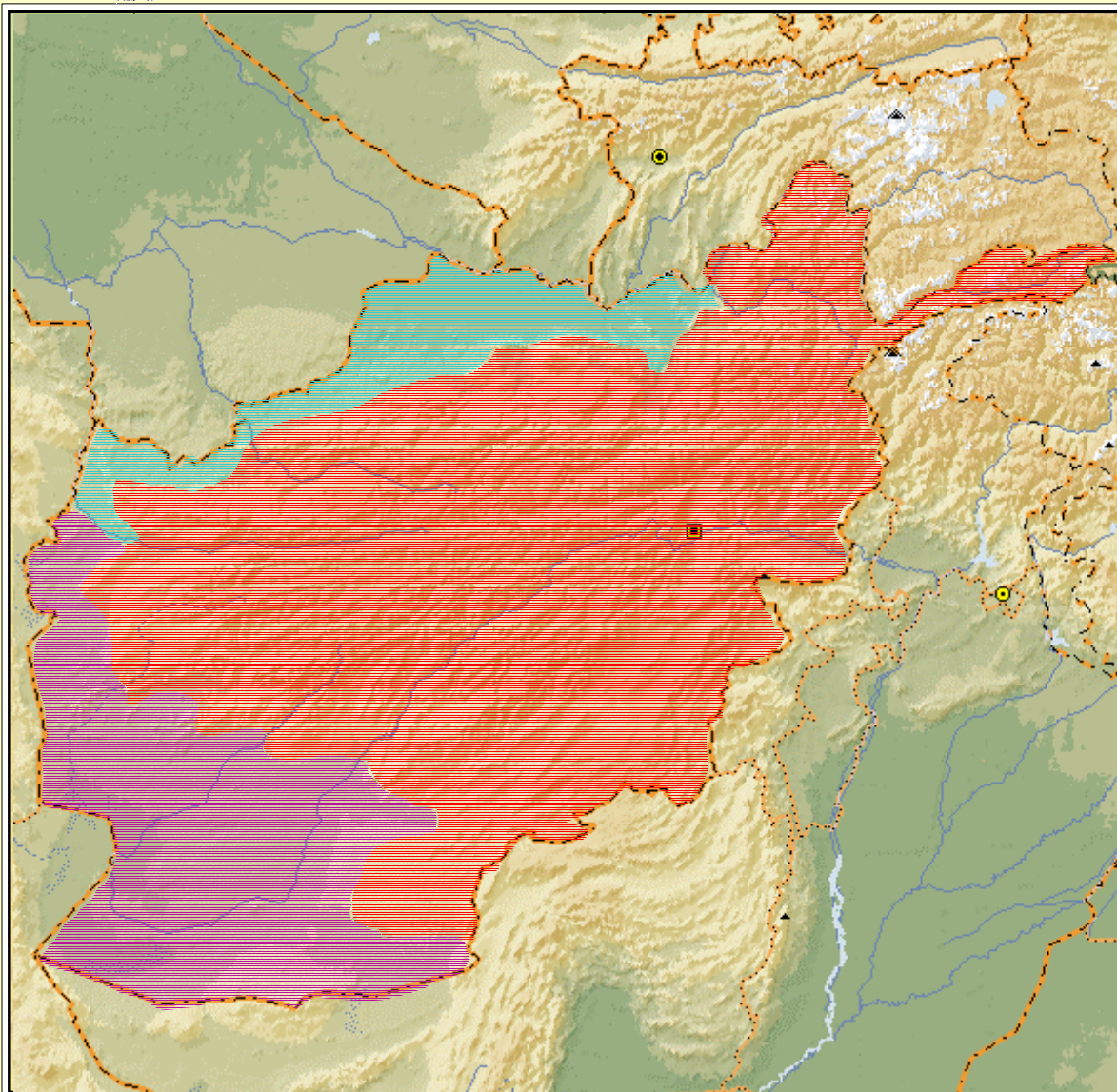
Hydrographic Data

Vegetation

Settlements



AFGHANISTAN



PHYSIOGRAPHICAL REGIONS

Three Physiographic Regions



Central Highlands



Southern Plateau



Northern Plains



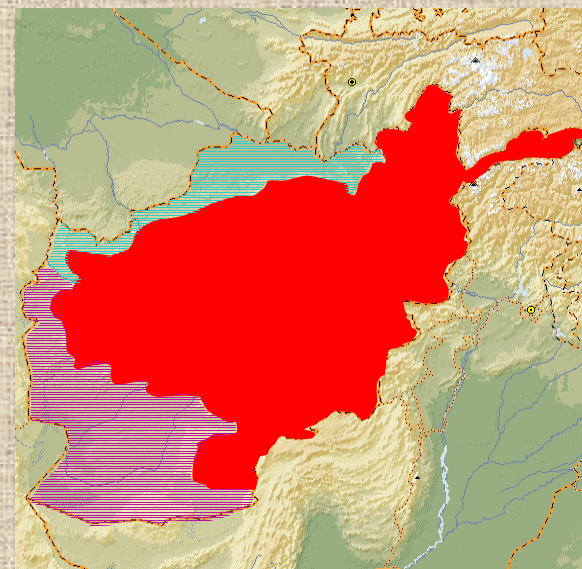
AFGHANISTAN



PHYSIOGRAPHICAL REGIONS



Central Highlands











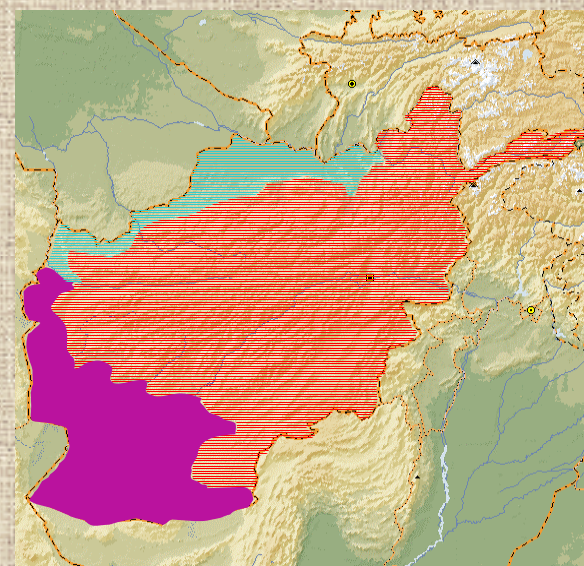
AFGHANISTAN

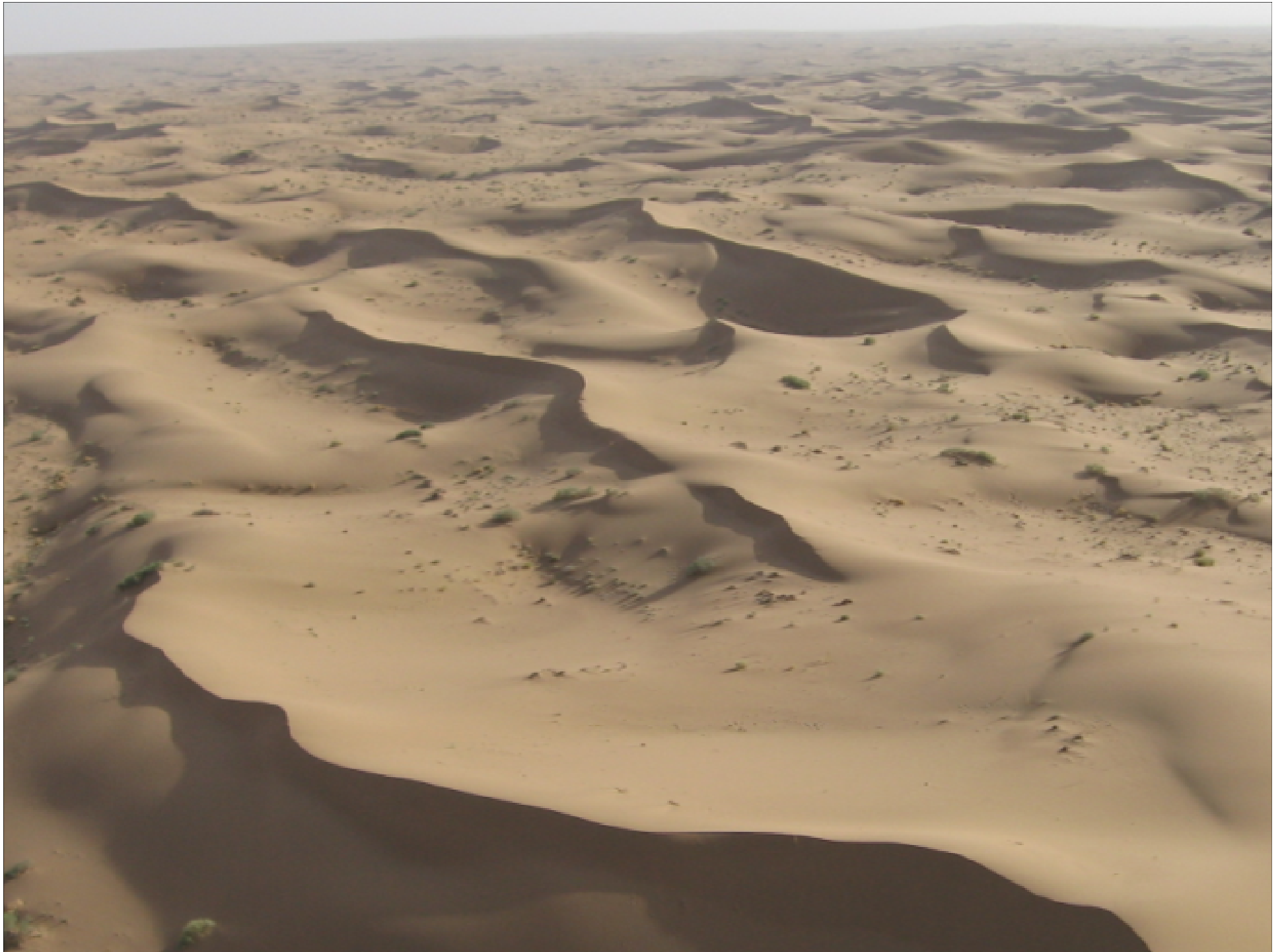


PHYSIOGRAPHICAL REGIONS



Southern Plateau









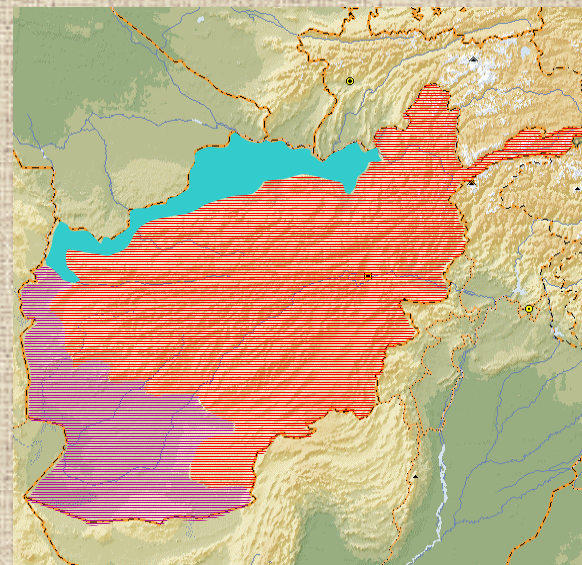
AFGHANISTAN



PHYSIOGRAPHICAL REGIONS



Northern Plains















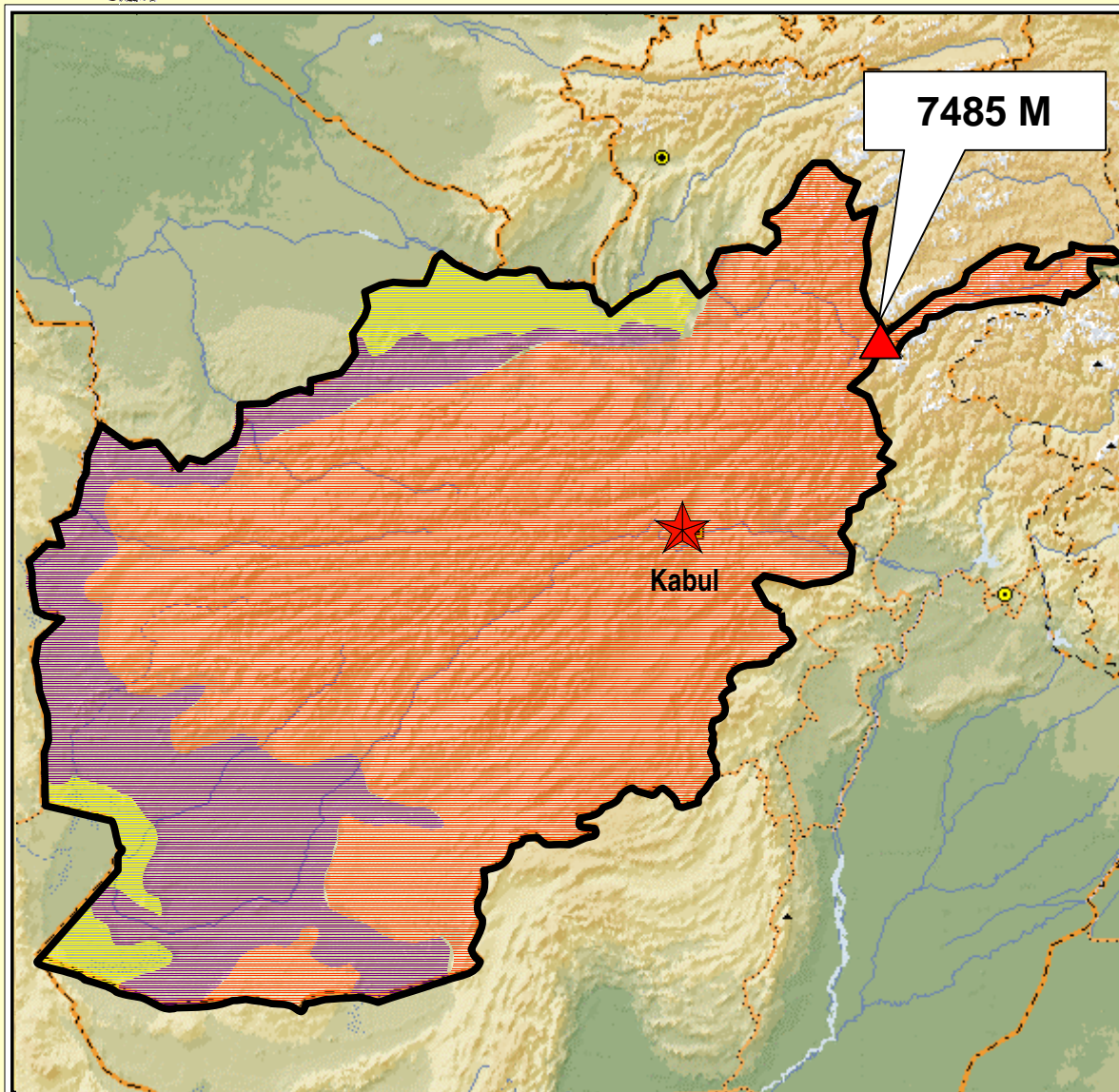
AFGHANISTAN



ELEVATION



AFGHANISTAN



ELEVATION

Elevation

Maximum
elevation
Mt. Nowshak
7,485m



1000 - 7485 m

500 - 1000 m

200 - 500 m





AFGHANISTAN



HYDROGRAPHIC DATA

Major Rivers

Dams

Kareez

Wadis



AFGHANISTAN



HYDROGRAPHIC DATA

Major Hydrographic Features



Major Rivers



Minor Rivers



Marsh lake







2005.08.07





AFGHANISTAN



HYDROGRAPHIC DATA

Major Hydrographic Features



Dams

Arghandab/Dahla Dam

Kajaki



AFGHANISTAN



HYDROGRAPHIC DATA

Kajaki Dam

Helmand Province

**90km Northwest of
Kandahar City**

Hydroelectricity

**Irrigation to
1800 sq. km of arid land**

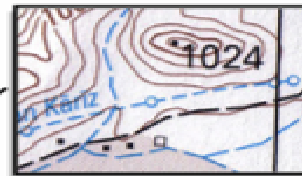
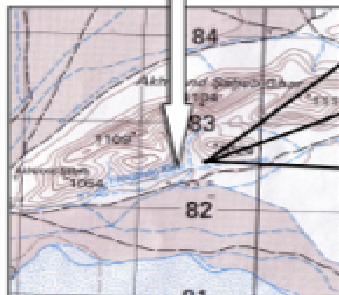


AFGHANISTAN



WHAT IS A KAREEZ?

Map Symbol for a Qanat/
Underground water Aqueduct with Shafts



**LOOK IN YOUR
MAP LEGEND FOR THE
FOLLOWING SYMBOLOGY**

50K MAP SHEET

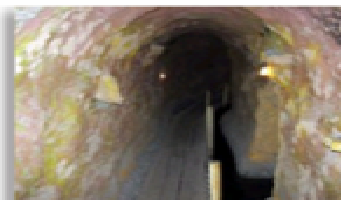
Qanat ———— ○ ————

100K MAP SHEET

Underground Aqueducts ———— ○ ————

KAREEZ (or Qanat)

A qanat or kareez is a water management system used to provide a reliable supply of water to human settlements or for irrigation in hot, arid and semi-arid climates.



This is an
underground
tunnel joining
two shafts.

**HYDROGRAPHIC
DATA**

Karez

Irrigation system

Series of wells

Underground channels

Hot & arid climates



AFGHANISTAN







AFGHANISTAN



HYDROGRAPHIC DATA

Wadi

Desert stream

Dry nearly year round

Fill during heavy rains

Near hilly terrain









AFGHANISTAN



VEGETATION

Central Highlands

Forest:

2 % of Land area

Southern Plateau

Desert

Northern Plains

Treeless steppes



L.J. Oppenheim

















AFGHANISTAN

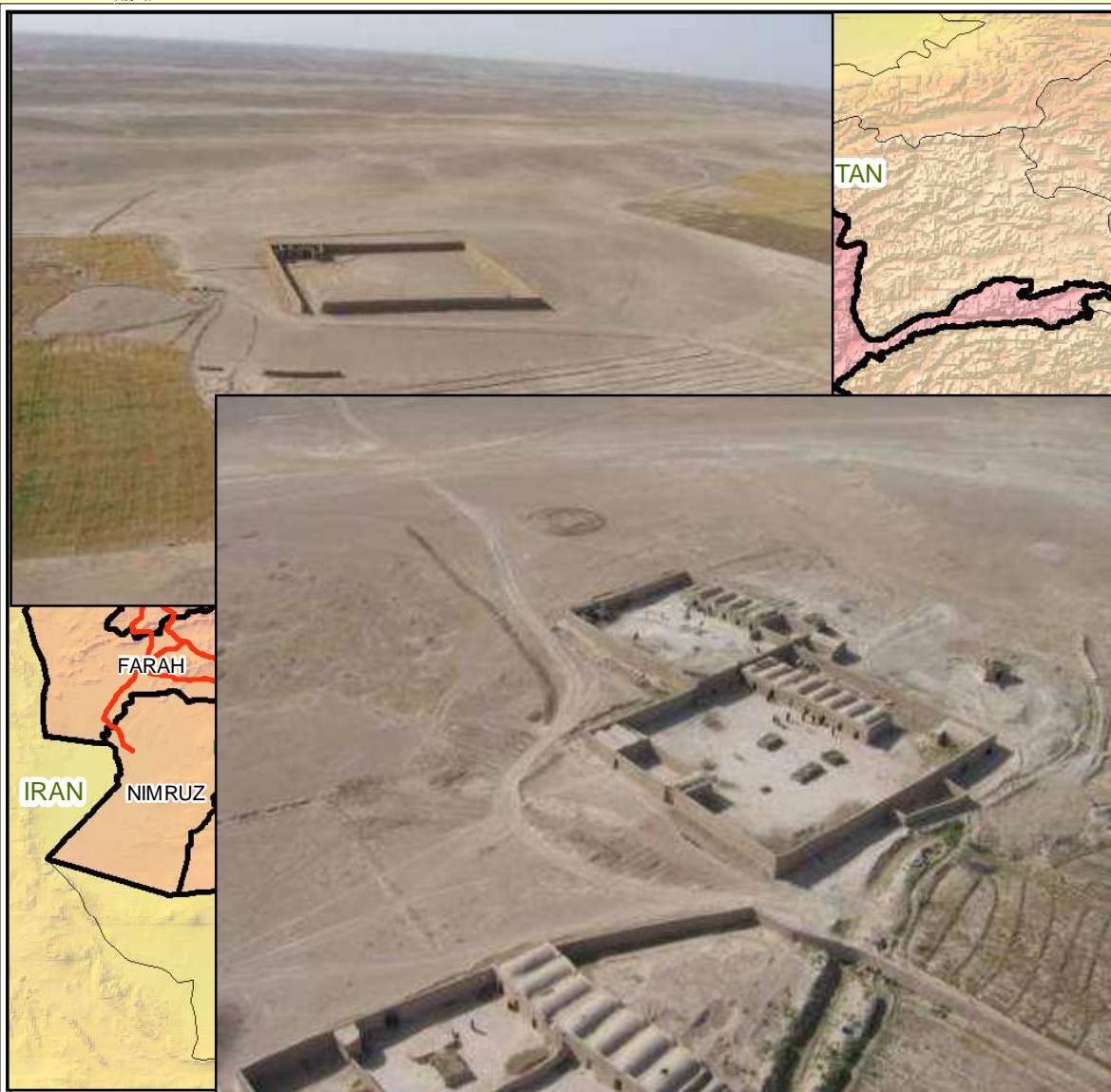


SETTLEMENTS

Single level dwellings

Walled compounds

Constructed from surrounding materials











16 13:56



AFGHANISTAN



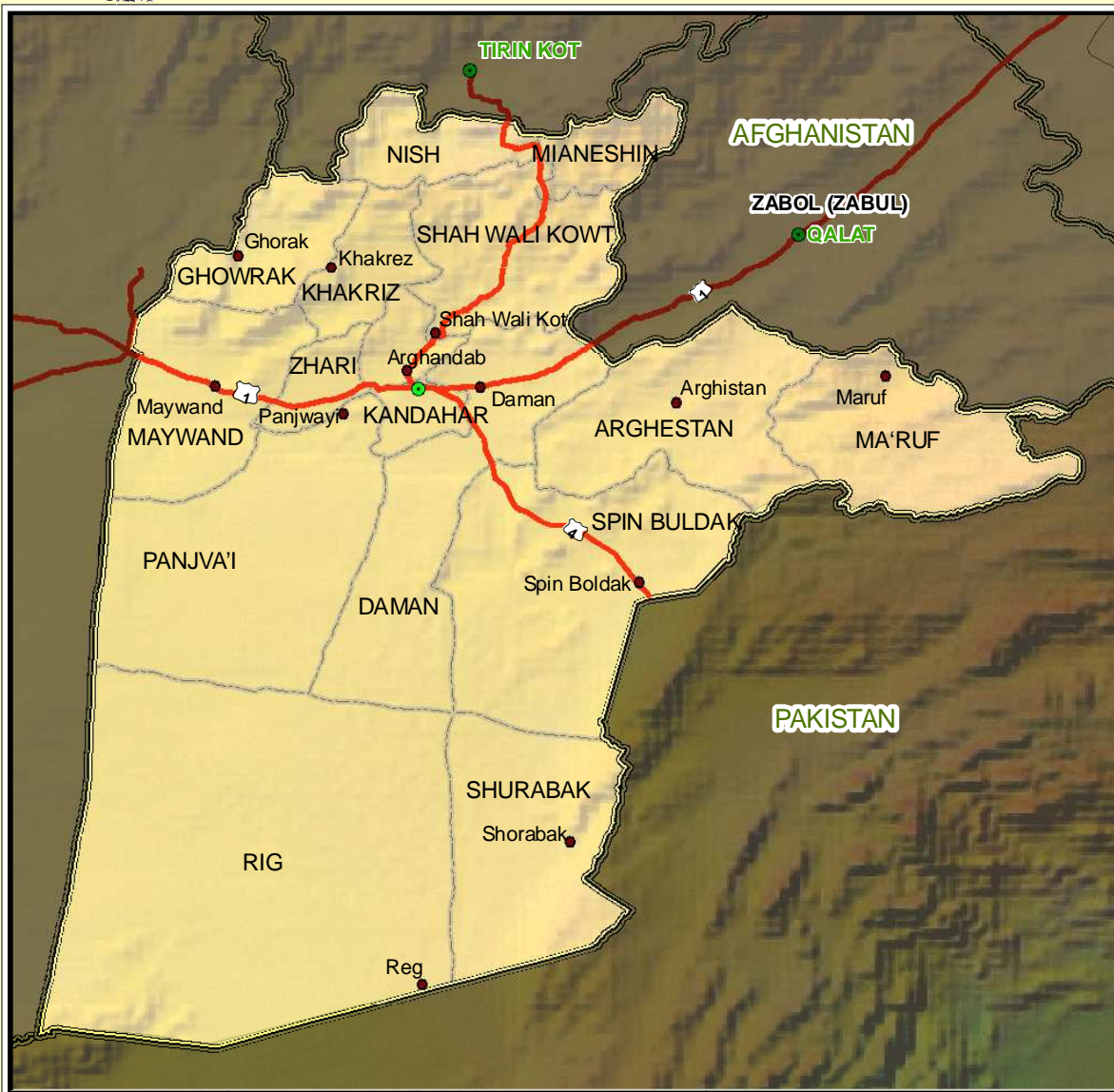
SETTLEMENTS

Kandahar City

Capital of Kandahar
Province

Population

250,000 est.











AFGHANISTAN



WEATHER EFFECTS

Flooding

Heavy rains cause rivers and wadis to overflow.

Sand Storms



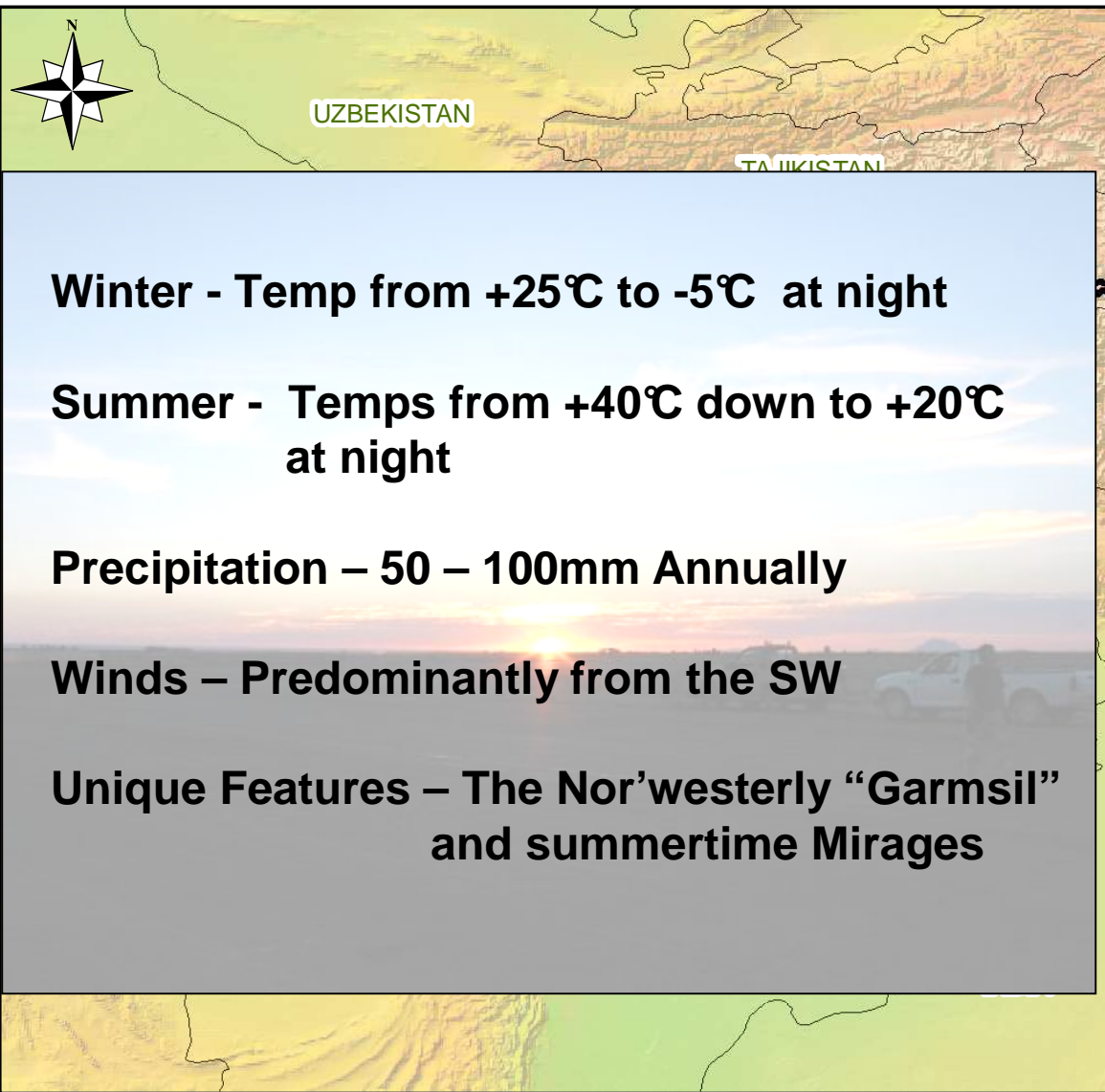
courtesy of Dutch Ministry of Defense

ISAF FORCES CONTINUE RESCUE OF FLOOD VICTIMS





AFGHANISTAN



Winter - Temp from +25°C to -5°C at night

Summer - Temps from +40°C down to +20°C at night

Precipitation – 50 – 100mm Annually

Winds – Predominantly from the SW

Unique Features – The Nor'westerly “Garmsil” and summertime Mirages

WEATHER EFFECTS

Very Dry, Continental

Two Predominant Seasons – Cold and Warm

Avg of 4 Days of Rain/month During “Wet” Season

**The Garmsil
“The Wind of 120 Days”**

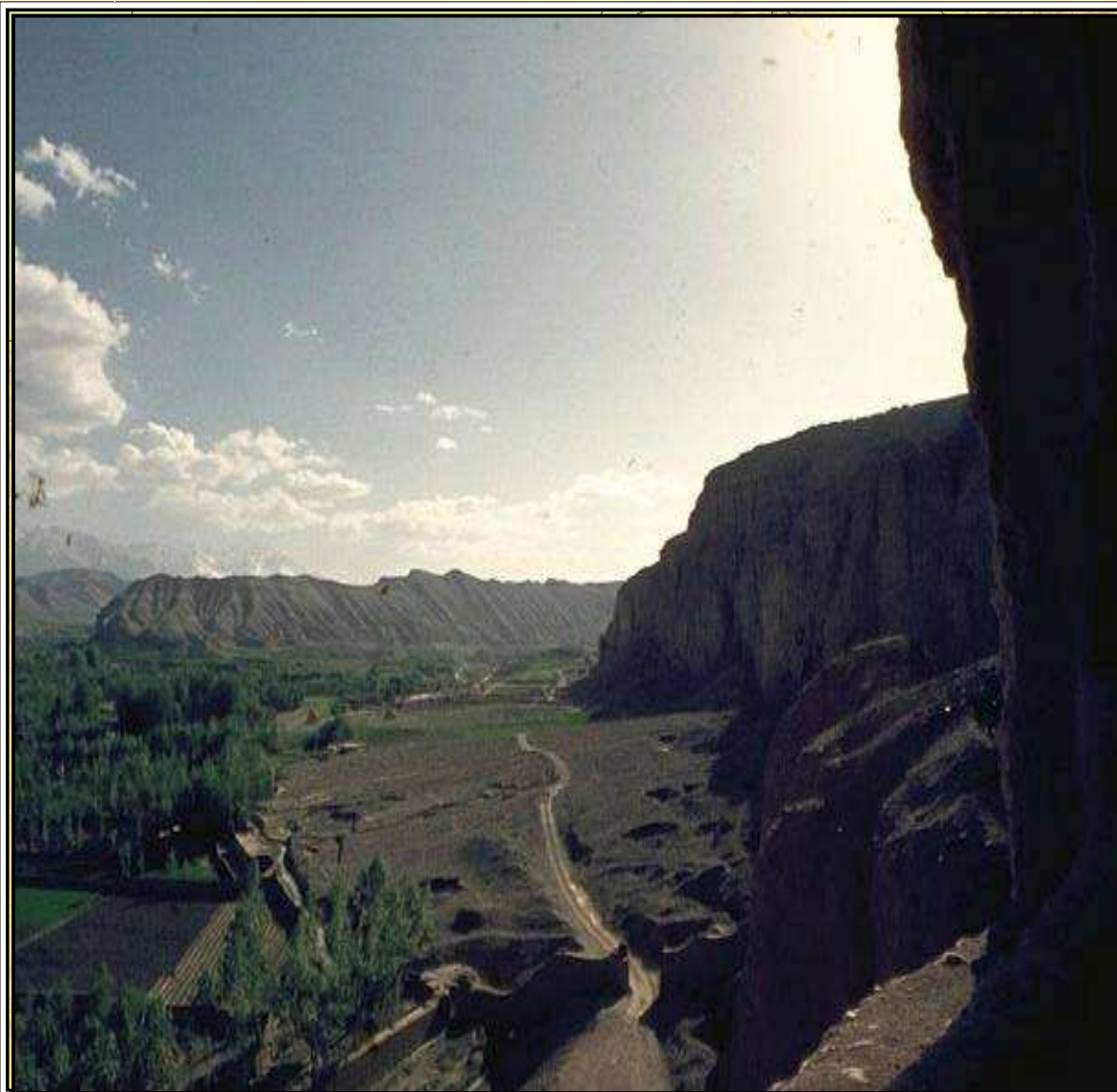
Mirages Occur Daily and Last 4 to 8 Hours







AFGHANISTAN



SUMMARY

Orientation

Geographical Data

Weather Effects



AFGHANISTAN



QUESTIONS ?

