

RF  
EL. 562'-3"

21'-4"

44  
EL. 540'-11"

13'-6"

43  
EL. 527'-5"

26'-0"

42  
EL. 501'-5"

12'-6"

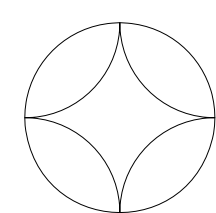
41  
EL. 488'-11"

438'-11" 1ST FLOOR

COPYRIGHT  
JOHN YOUNG  
1989

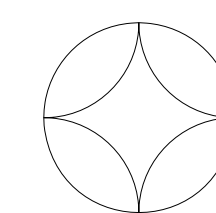
JOHN YOUNG ARCHITECT  
251 WEST 89TH STREET  
NEW YORK NEW YORK

BUILDING DESIGNED IN 1929 BY:  
SCHULTZE AND WEAVER, ARCHITECTS,  
CLYDE R. PLACE, MECHANICAL ENGINEER, AND  
H. G. BALCOM, STRUCTURAL ENGINEER.



# THE PIERRE

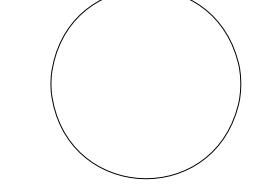
2 - 6 EAST 61ST STREET  
NEW YORK NEW YORK



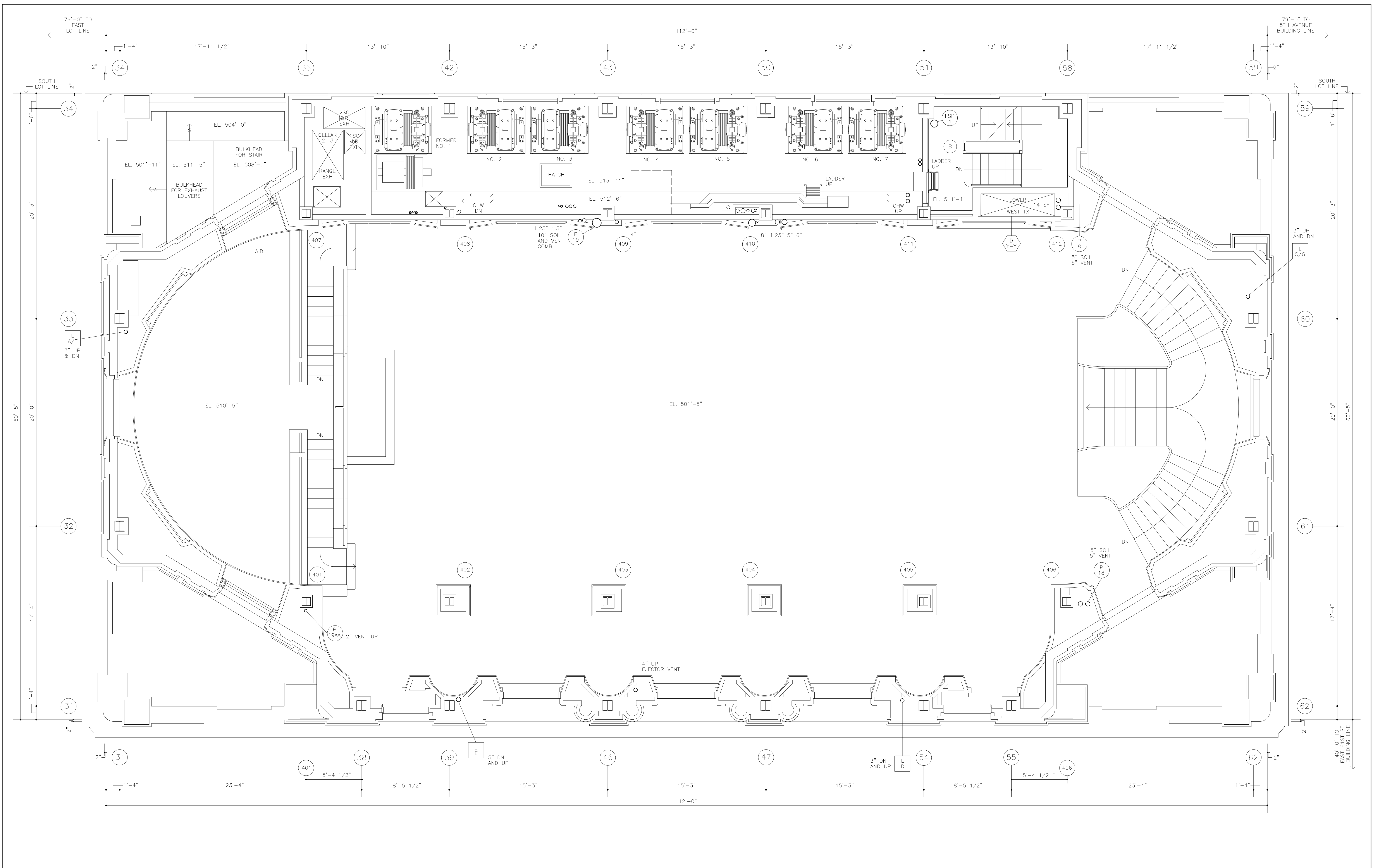
NORTH ELEVATION  
FLOORS 41, 42, ROOF

0 FOOT 5 10 20

DWG. PL-41RF-04



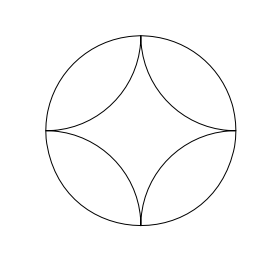
AUGUST 31 1990



COPYRIGHT  
JOHN YOUNG  
1989

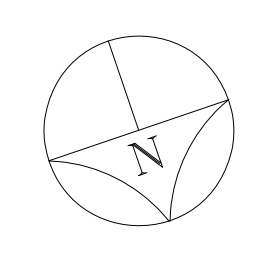
JOHN YOUNG ARCHITECT  
251 WEST 89TH STREET  
NEW YORK NEW YORK

BUILDING DESIGNED IN 1929 BY  
SCHULTZE AND WEAVER, ARCHITECTS.  
CLYDE R. PLACE, MECHANICAL ENGINEER, AND  
H. G. BALCOM, STRUCTURAL ENGINEER.



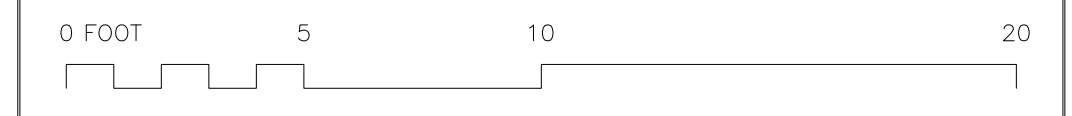
# THE PIERRE

2 - 6 EAST 61ST STREET  
NEW YORK NEW YORK

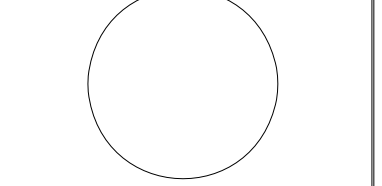


## 42ND MEZZANINE PLAN

41ST BUILT FLOOR MEZZANINE ELEVATIONS AS NOTED



DWG. PR-0042-M1



OCTOBER 4 1989