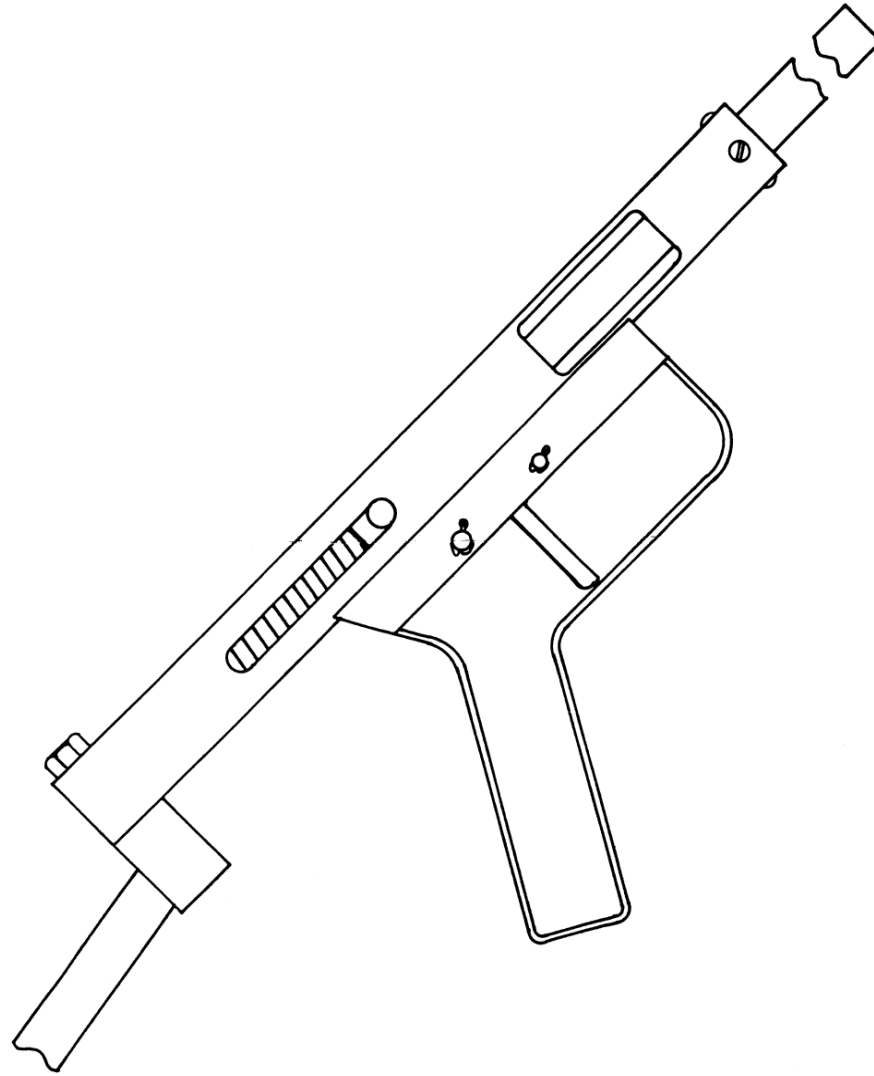
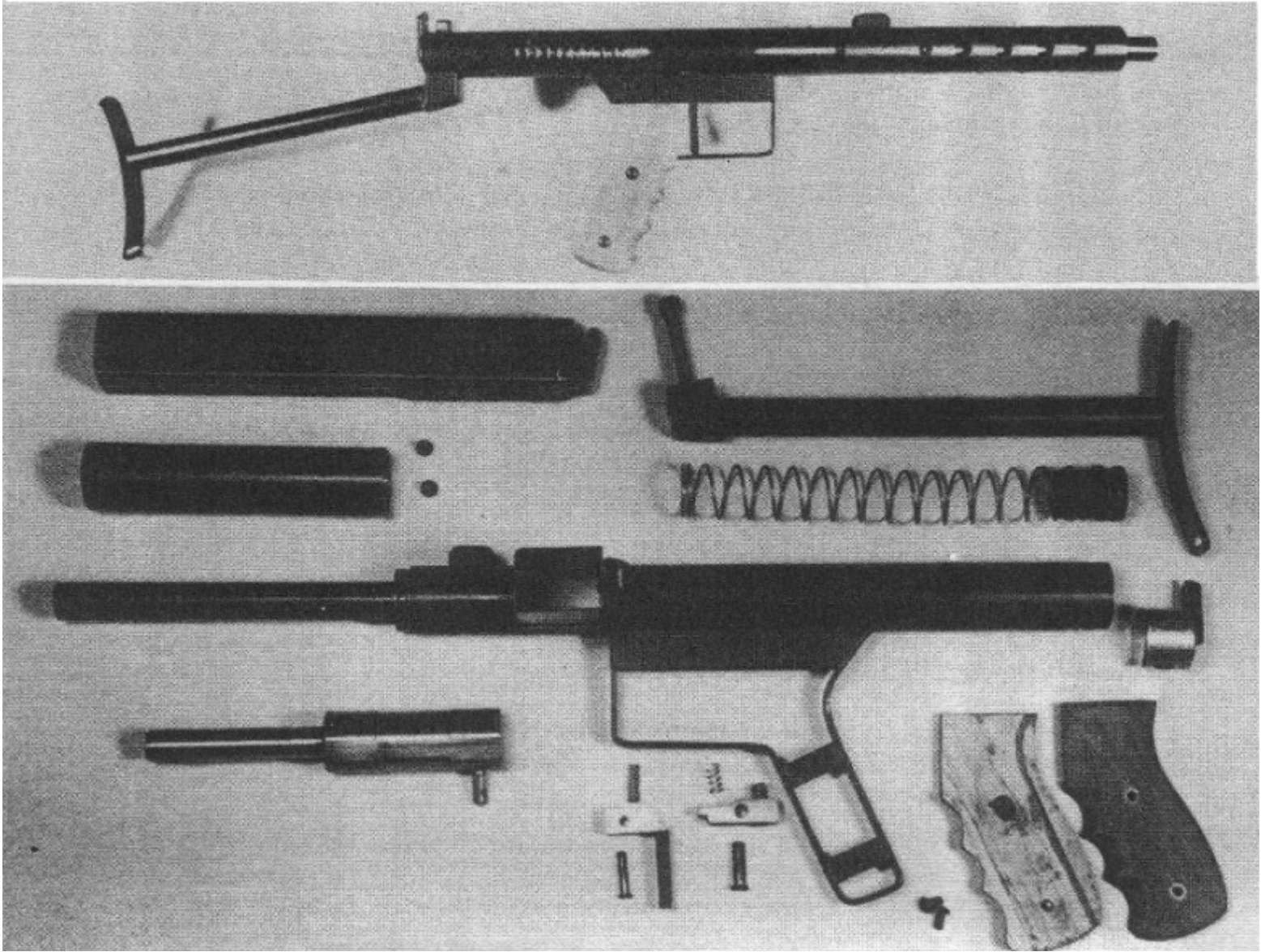
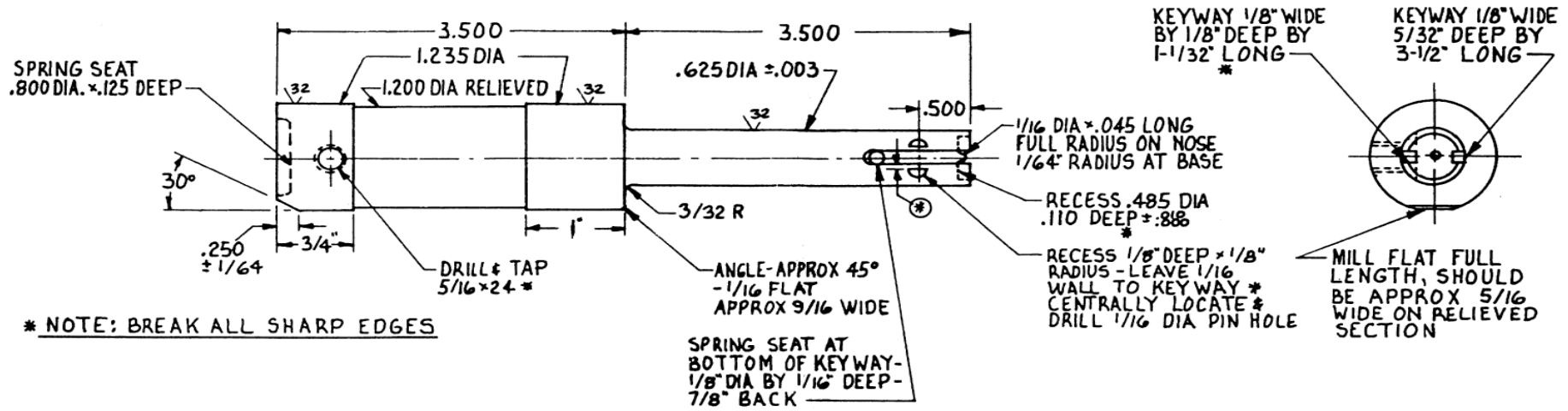
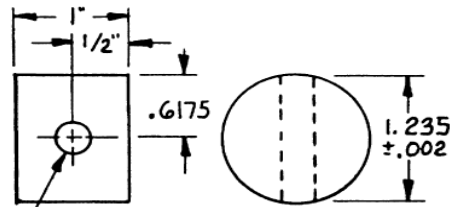

Homemade SMG





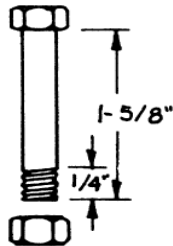


BREECH-BLOCK INTL-HRS/ C/HARDEN .010-.015 DEPTH

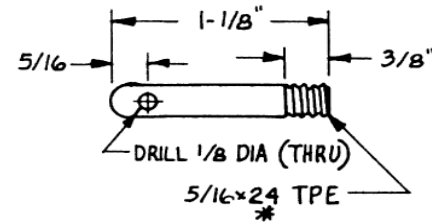


DRILL & LINE REAM WITH
 MATING PART IN PLACE
 (TUBE) 5/16" DIA THRU

RETAINING PLUG - MTL 6061-T6 ALUM

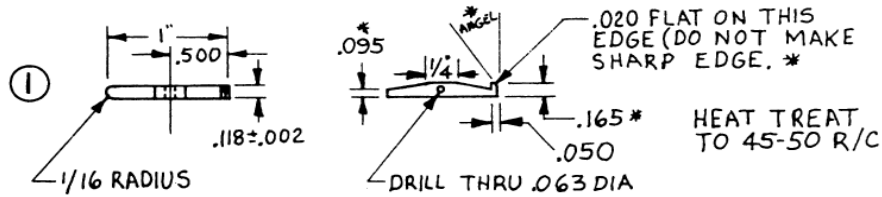


RETAINING PLUG BOLT & NUT
 5/16 × 18 STL PURCHASED
 (HEX HEAD) & NUT - SELF LOCKING



COCKING KNOB - MTL 5/16 BOLT - STL

* EXTRACTOR, PIVOT PIN & SPRING (INT'L STEEL)

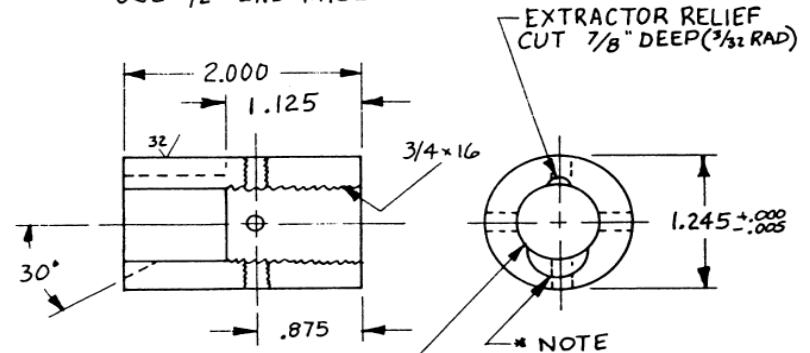


NOTE: THIS PART MIGHT REQUIRE SOME HAND FITTING -
(1/32" - 3/64" LIP TO SNAP INTO EXTRACTOR GROOVE IN CASE)

② * EXTRACTOR PIN .062 DIA. x .275 LONG (STL)

③ * EXTRACTOR SPRING .110 - .120 DIA. x 1/8" LONG

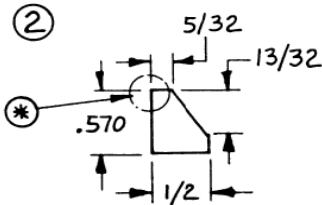
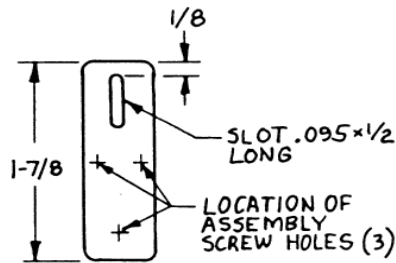
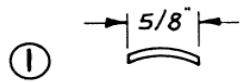
* NOTE: LOADING RAMP CUT
USE 1/2" END MILL



THIS SERIES OF HOLES (4) LOCATED 90° APART - THE ONE LOCATED 180° FROM THE 30° CUT, IS THE BARREL LOCK SCREW AND HAS TO BREAK THRU. (4) D & T #10-32

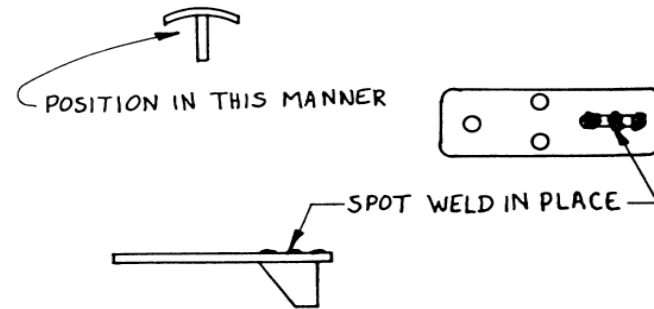
LOADING RAMP & BARREL ALIGNMENT PLUG - MTL 6061-T6 ALUM

EJECTOR ASSEMBLY, MTL STL

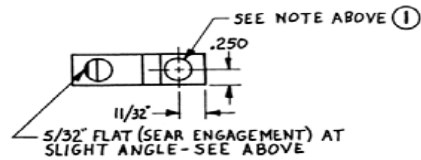
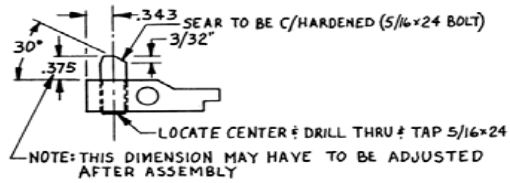
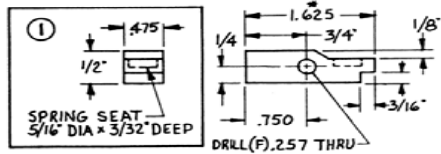


① THIS PART CAN BE MADE FROM THE SAME TUBING AS THE HOUSING (THE RADIUS WILL FIT)

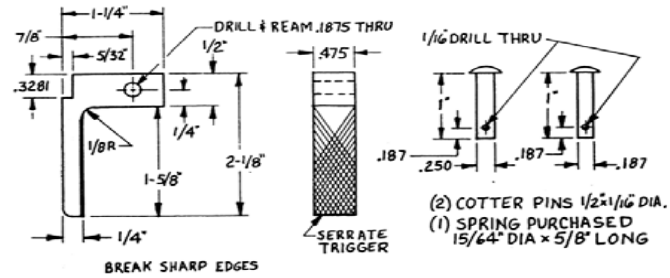
② THIS PART OF (.095) FLAT STOCK HARDENED OR CASE/HARDENED AS NOTED (*)



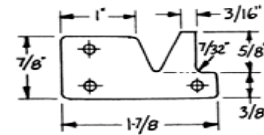
SEAR, SEAR PIVOT PINS & SPRING
STL MILD 1/2" x 1/2"



TRIGGER-MTL-ALUM 6061 FLAT SLK

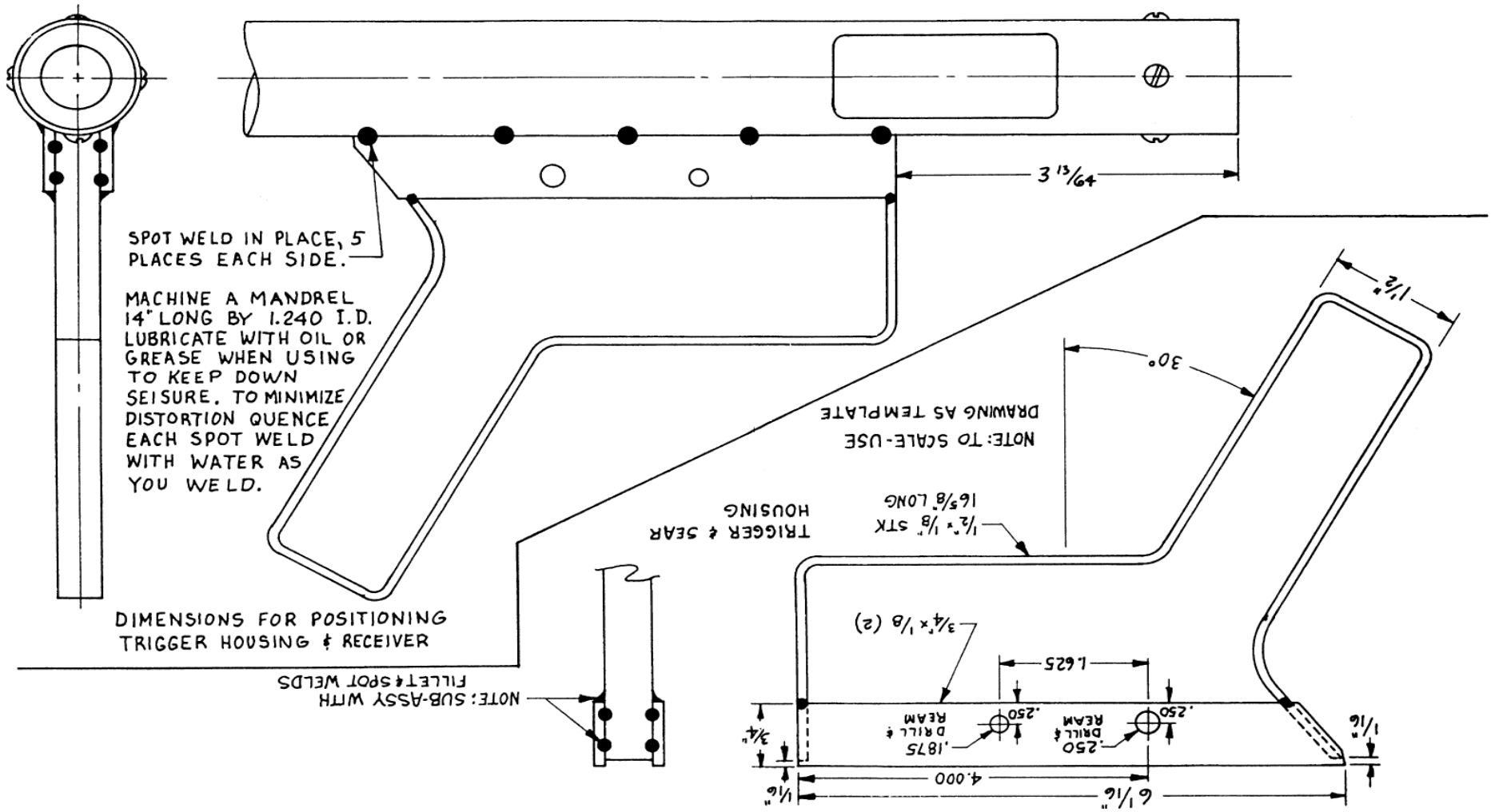


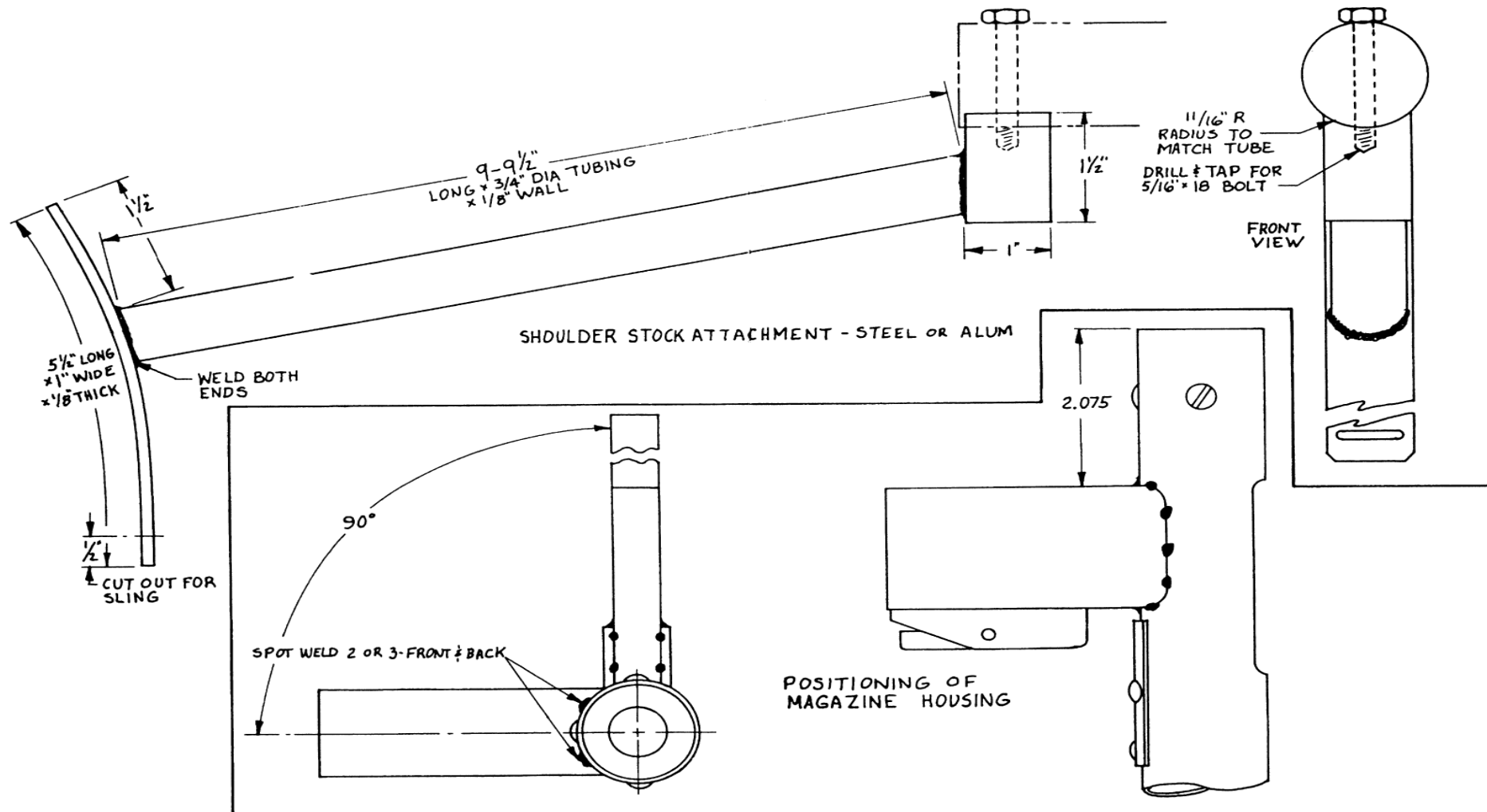
EJECTOR - 1/16" THICK SHEET METAL. CAN BE CUT FROM SAME MATERIAL AS HOUSING, AS RADIUS MATCHES

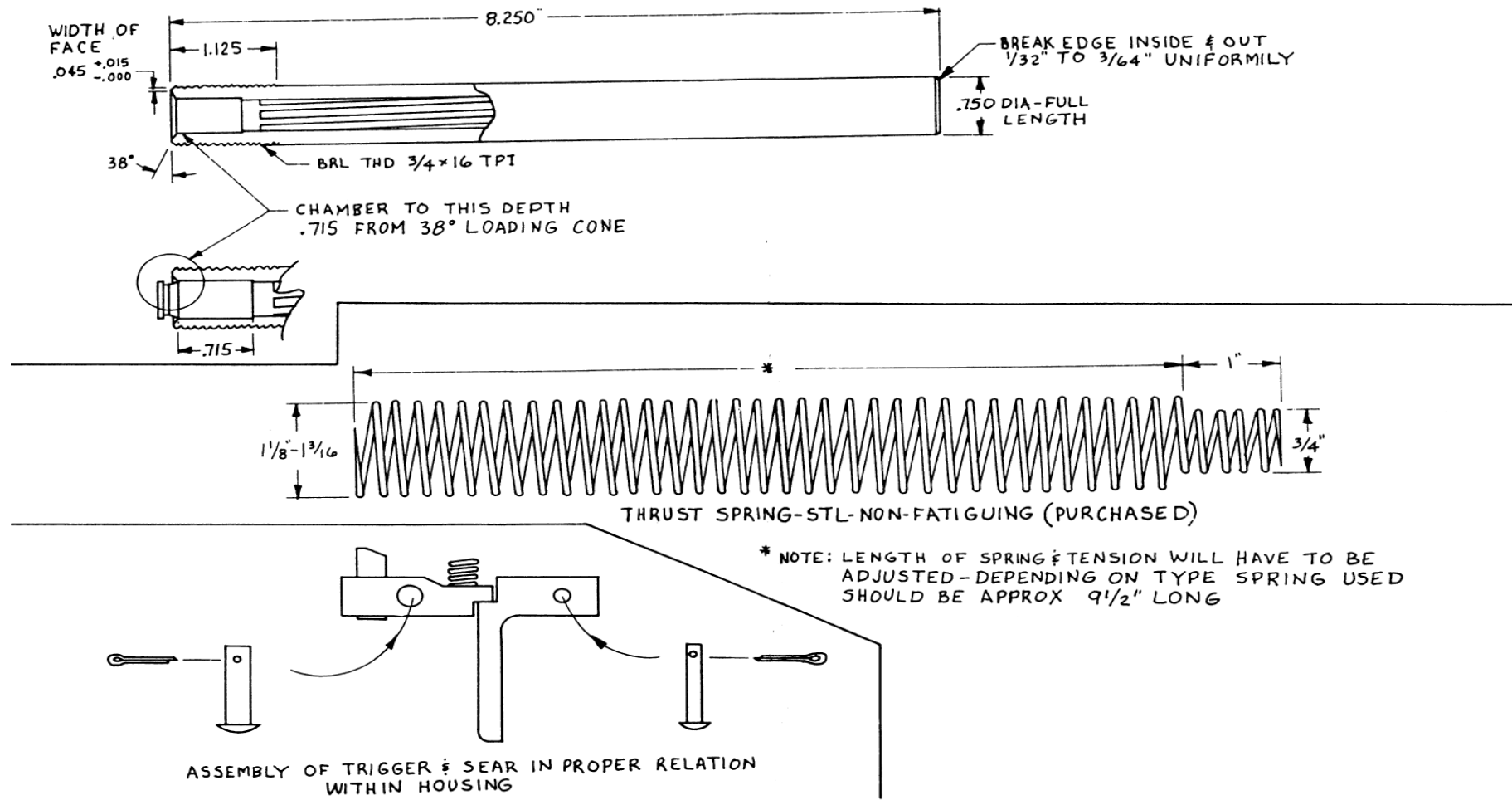


BEND DOWN ALONG DOTTED LINE 90°

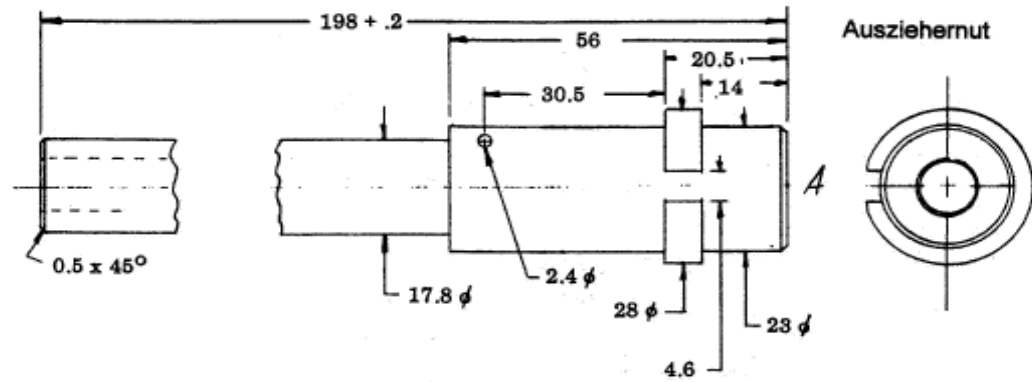
(3) CLEARANCE HOLES FOR 6-32 SCREWS, APPROX IN THE ABOVE LOCATIONS. SCREW LENGTH FROM HEAD 1/8" LONG.







LAUF

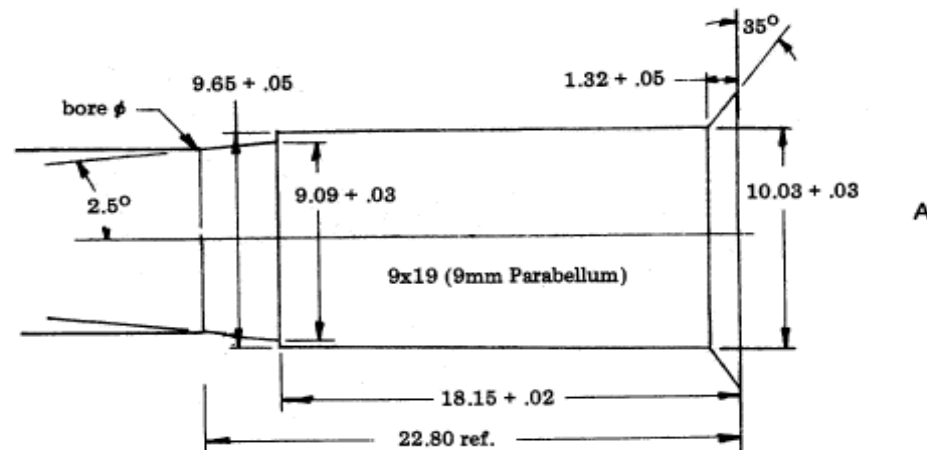


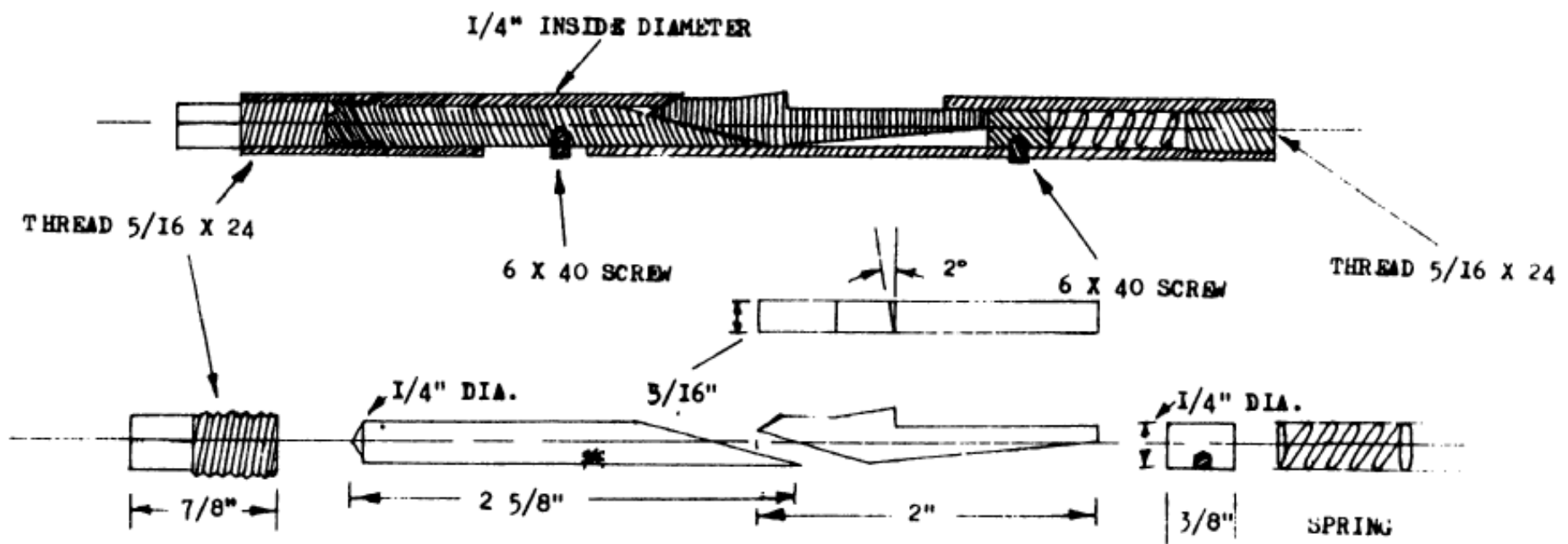
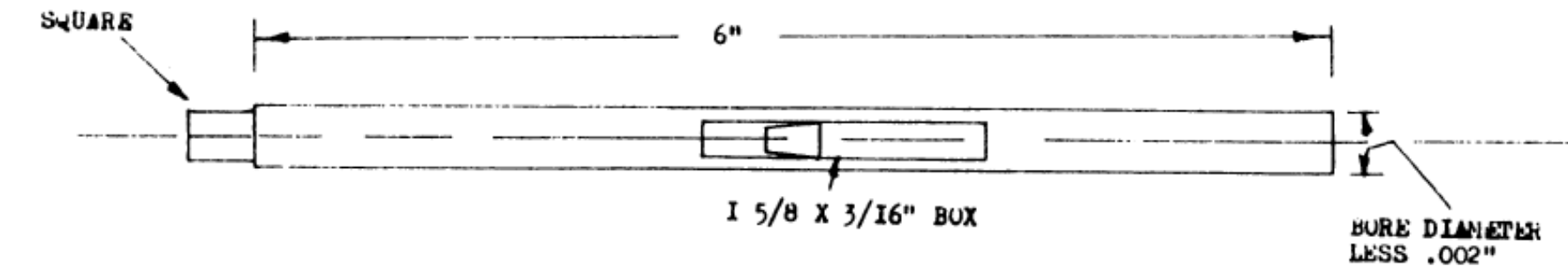
Drall: 1/250 rechts
 Züge: 6
 Zugbreite: 2,5+0,2mm
 Laufbohrung, Durchmesser: 8,84+0,2mm
 Zug-, Durchmesser: 9,06+0,5mm

Masstab 1:1

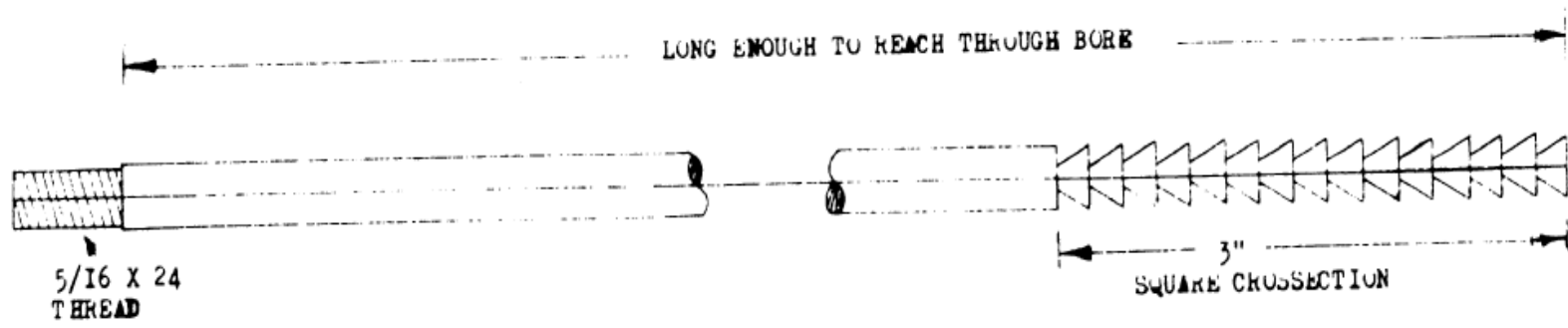
Material
 AISI 4140
 Härte: Br 255-277

Patronenlager (Lauf)

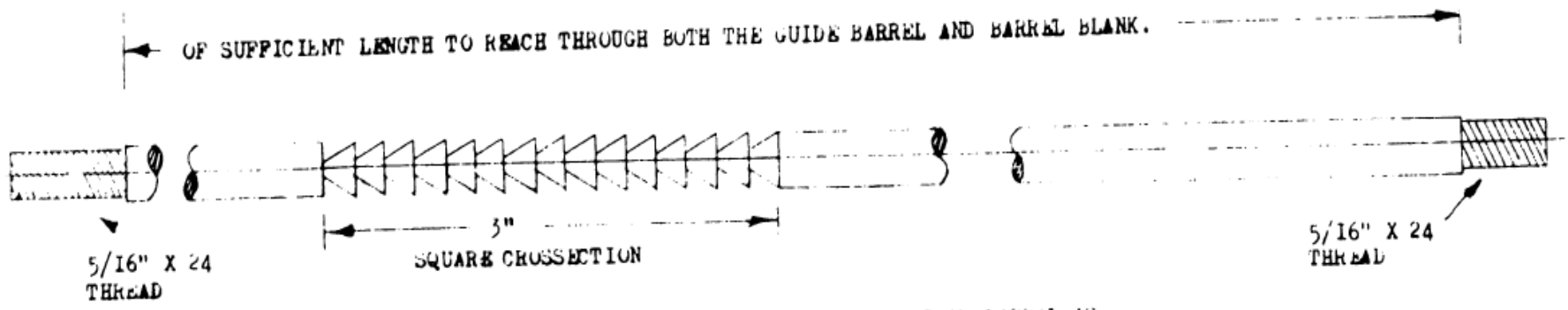




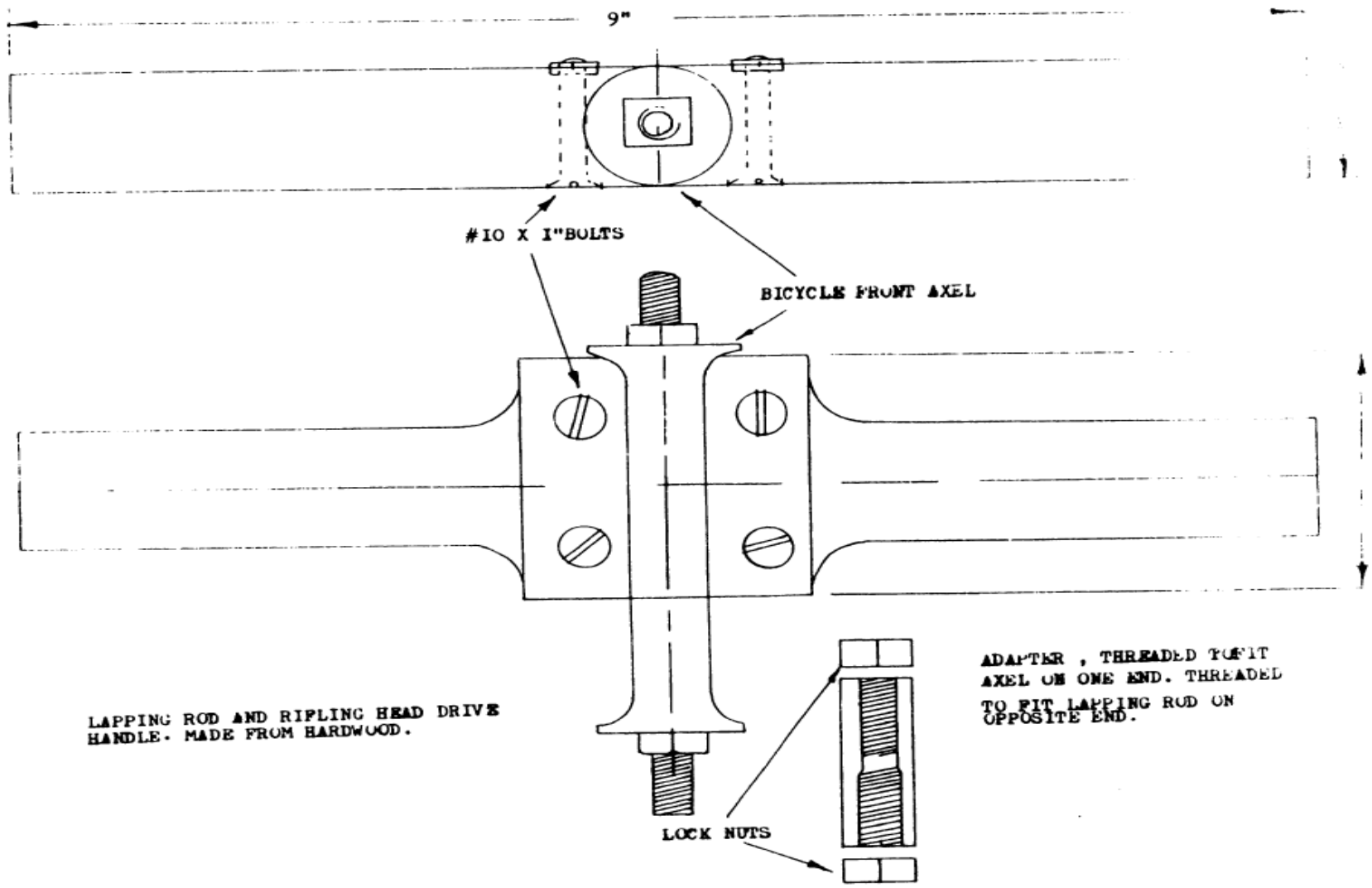
HOOK TYPE RIFLING HEAD, CALIBER 9 MM



LAPPING ROD



RIFLING HEAD DRIVE, FOR USE WITH ANOTHER BARREL AS RIFLING GUIDE.



9"

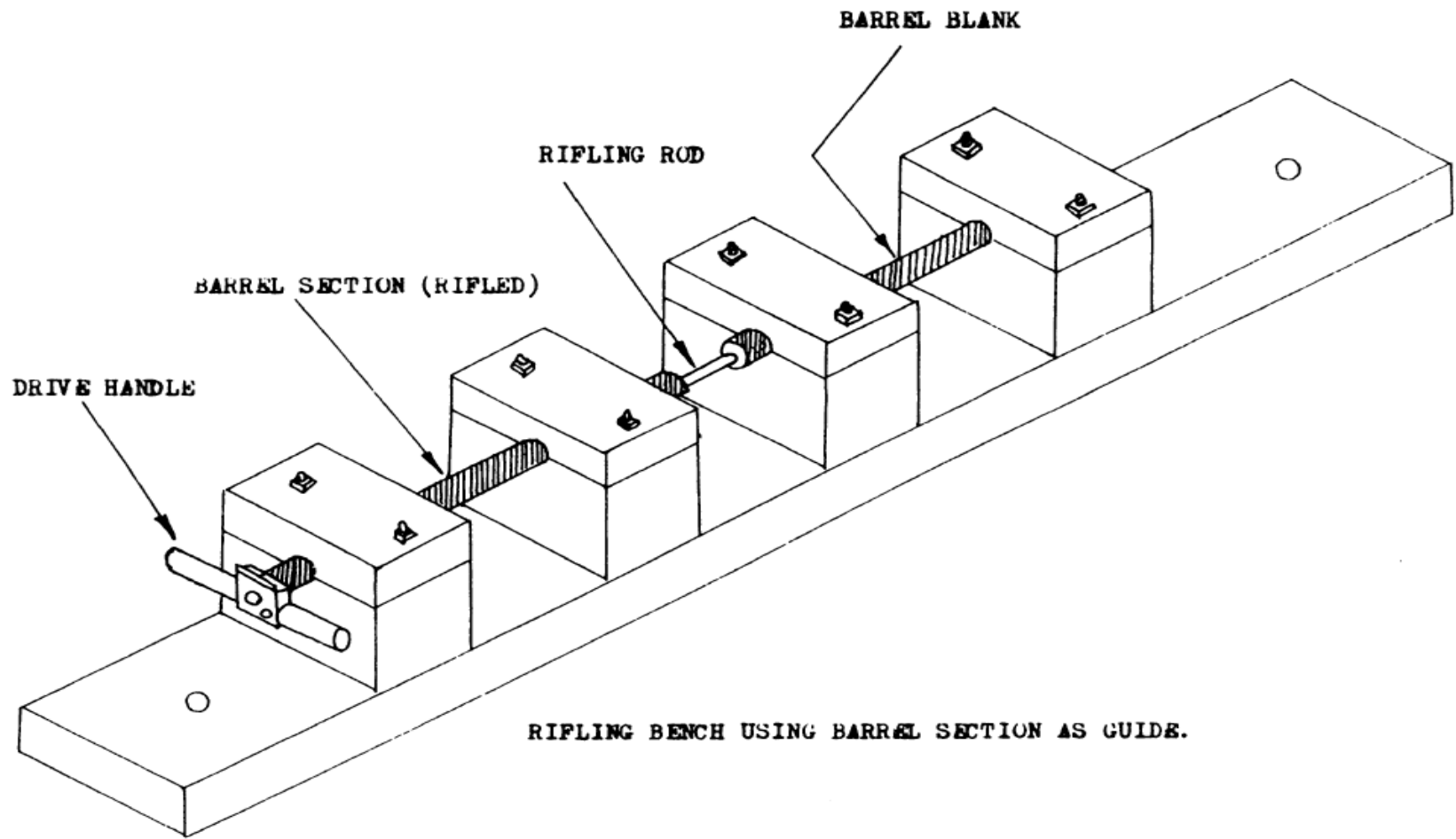
#10 X 1" BOLTS

BICYCLE FRONT AXEL

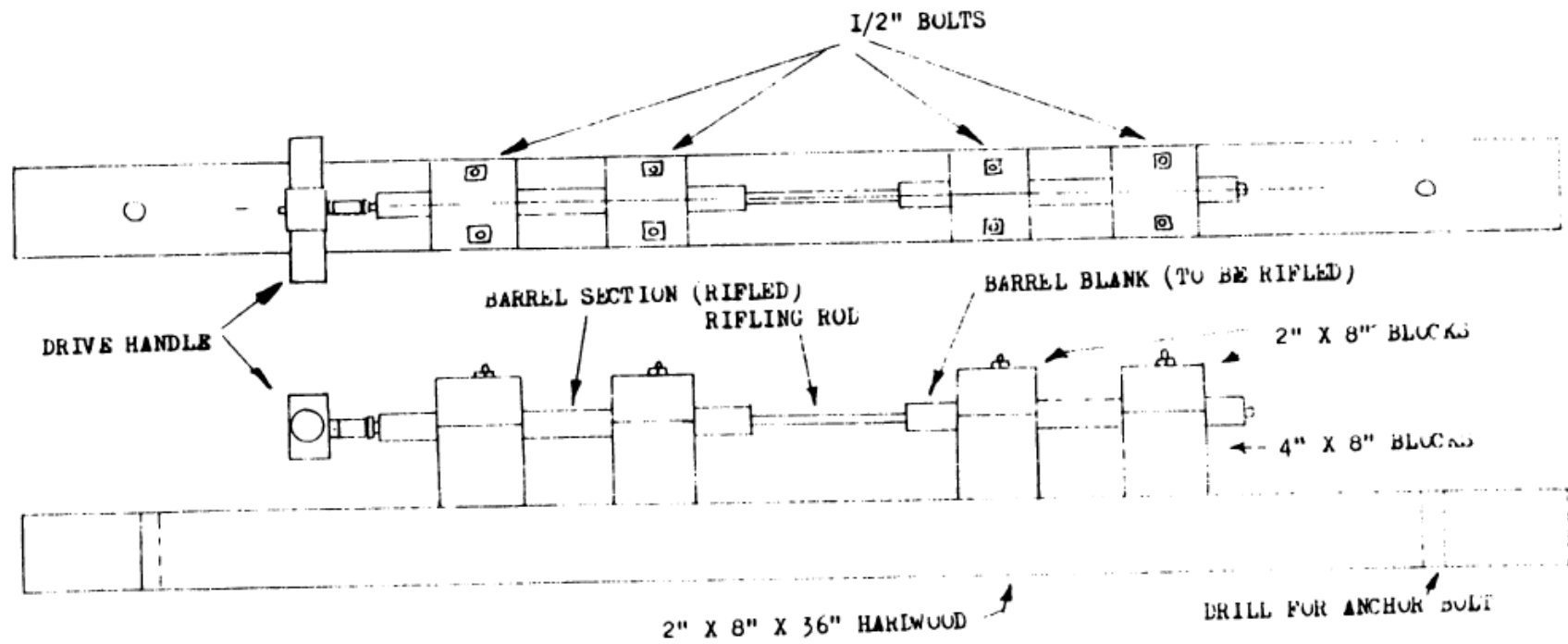
LAPPING ROD AND RIPLING HEAD DRIVE HANDLE. MADE FROM HARDWOOD.

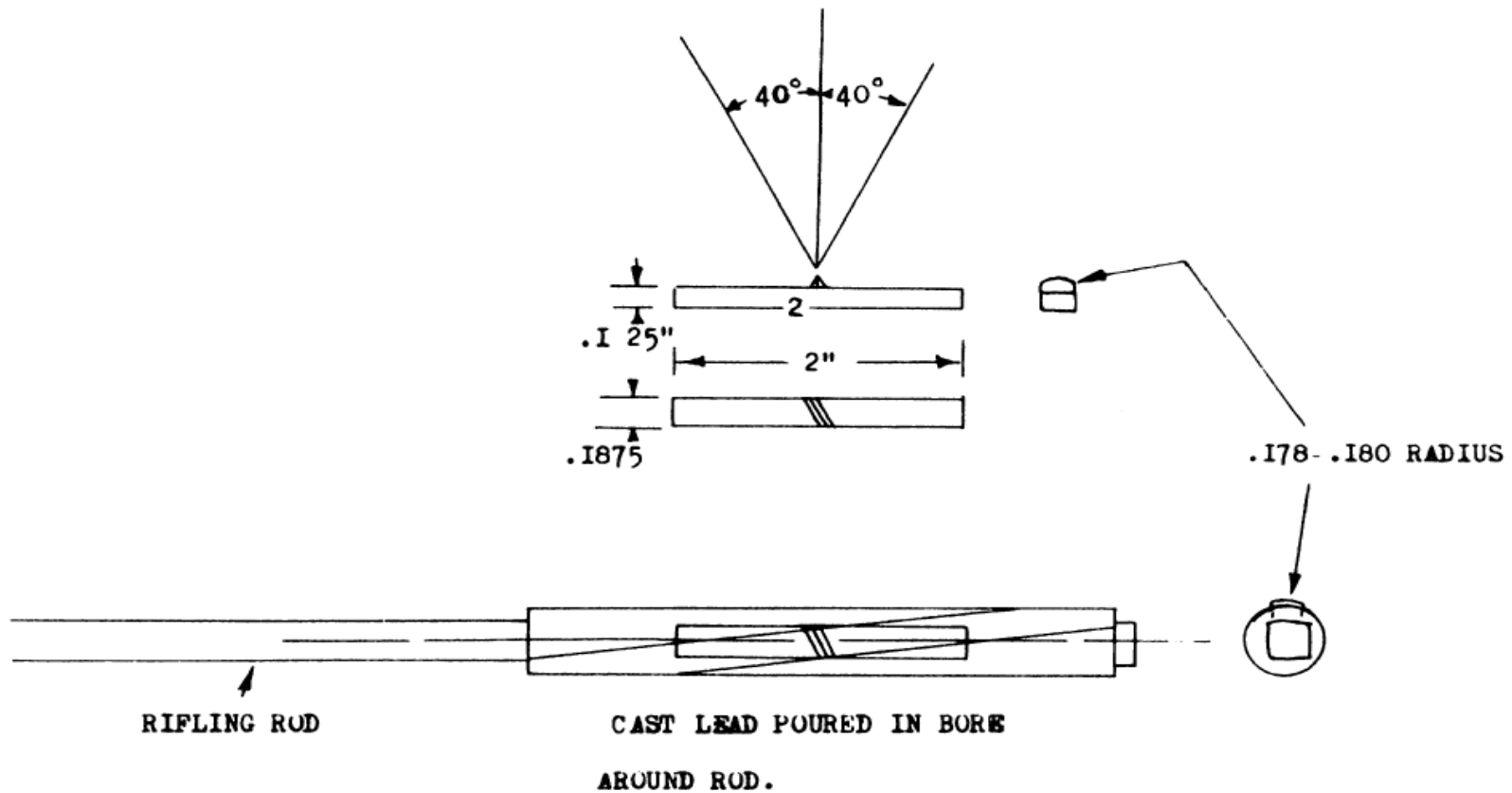
LOCK NUTS

ADAPTER, THREADED TO FIT AXEL ON ONE END. THREADED TO FIT LAPPING ROD ON OPPOSITE END.



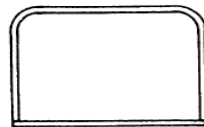
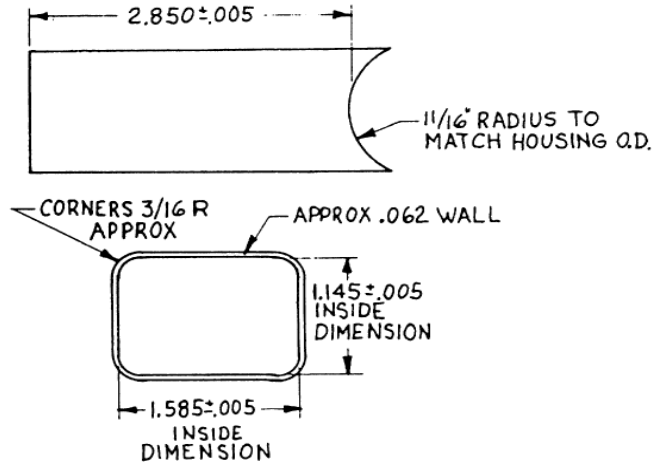
RIFLING BENCH USING BARREL SECTION AS GUIDE





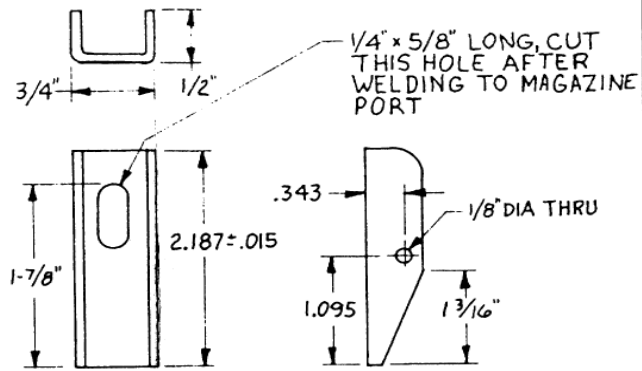
RIFLING CUTTER (SCRAPE TYPE) TO DEEPEN EXISTING GROOVES IN BARREL
USING EXISTING RIFLING AS GUIDE.

MAGAZINE HOUSING, MTL.062 SHEET METAL



WILL WORK VERY WELL CONSTRUCTED IN THIS MANNER, BY SPOT WELDING PLATE ALONG SIDES (FULL LENGTH)

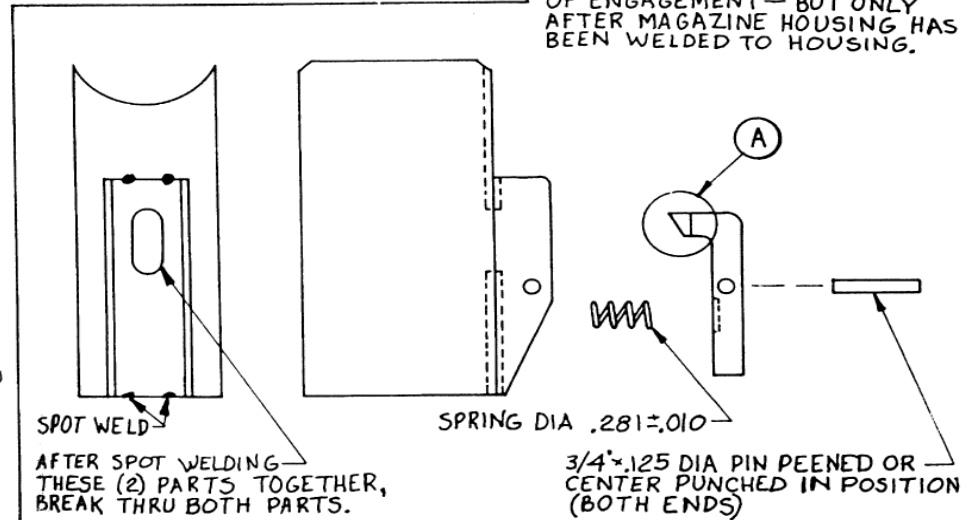
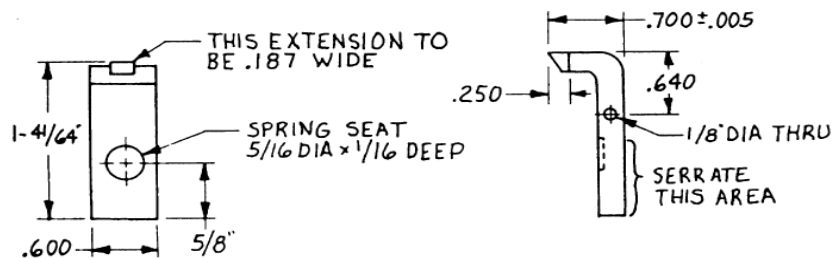
MAGAZINE RELEASE, STL.



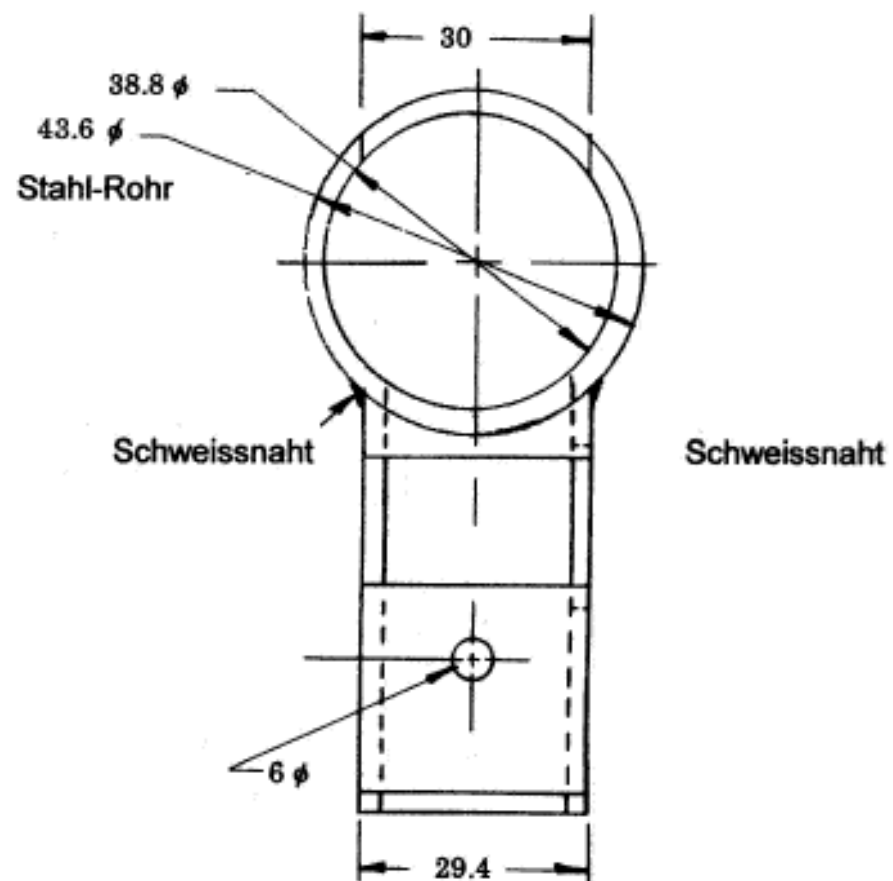
NOTE: CAN BE MADE FROM 3/4 x 3/4 SQ. TUBING

ASSEMBLY OF MAGAZINE HOUSING & MAGAZINE RELEASE

(A) IT PROBABLY WILL BE NECESSARY TO DO SOME ADJUSTING OR HANDFITTING HERE TO GET THE PROPER FIT, AND AMOUNT OF ENGAGEMENT - BUT ONLY AFTER MAGAZINE HOUSING HAS BEEN WELDED TO HOUSING.



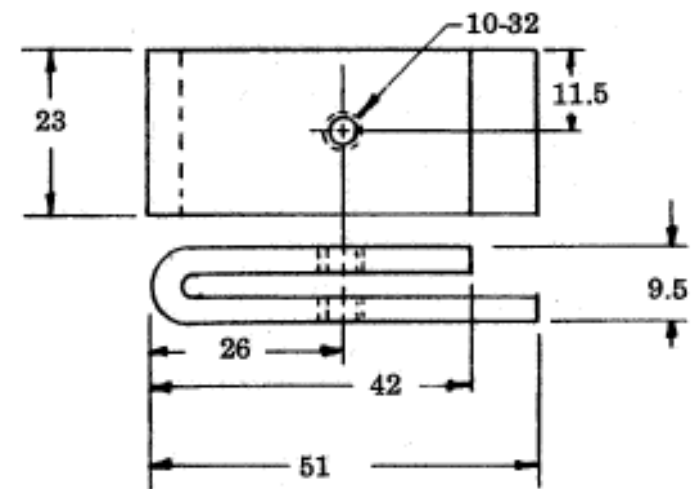
Magazingehäuse 2



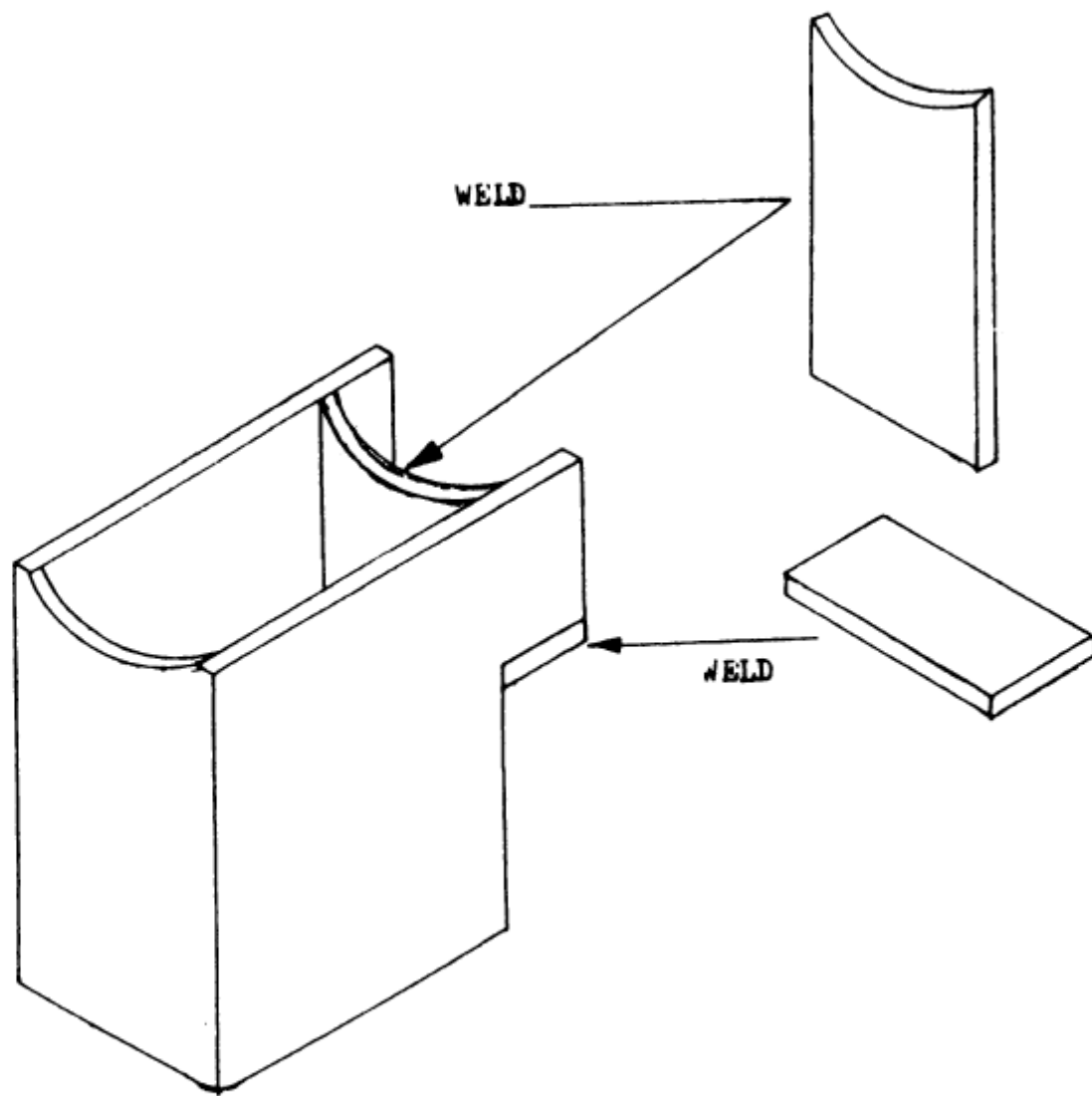
Masstab 1:1

Magazingehäuse-Verriegelung

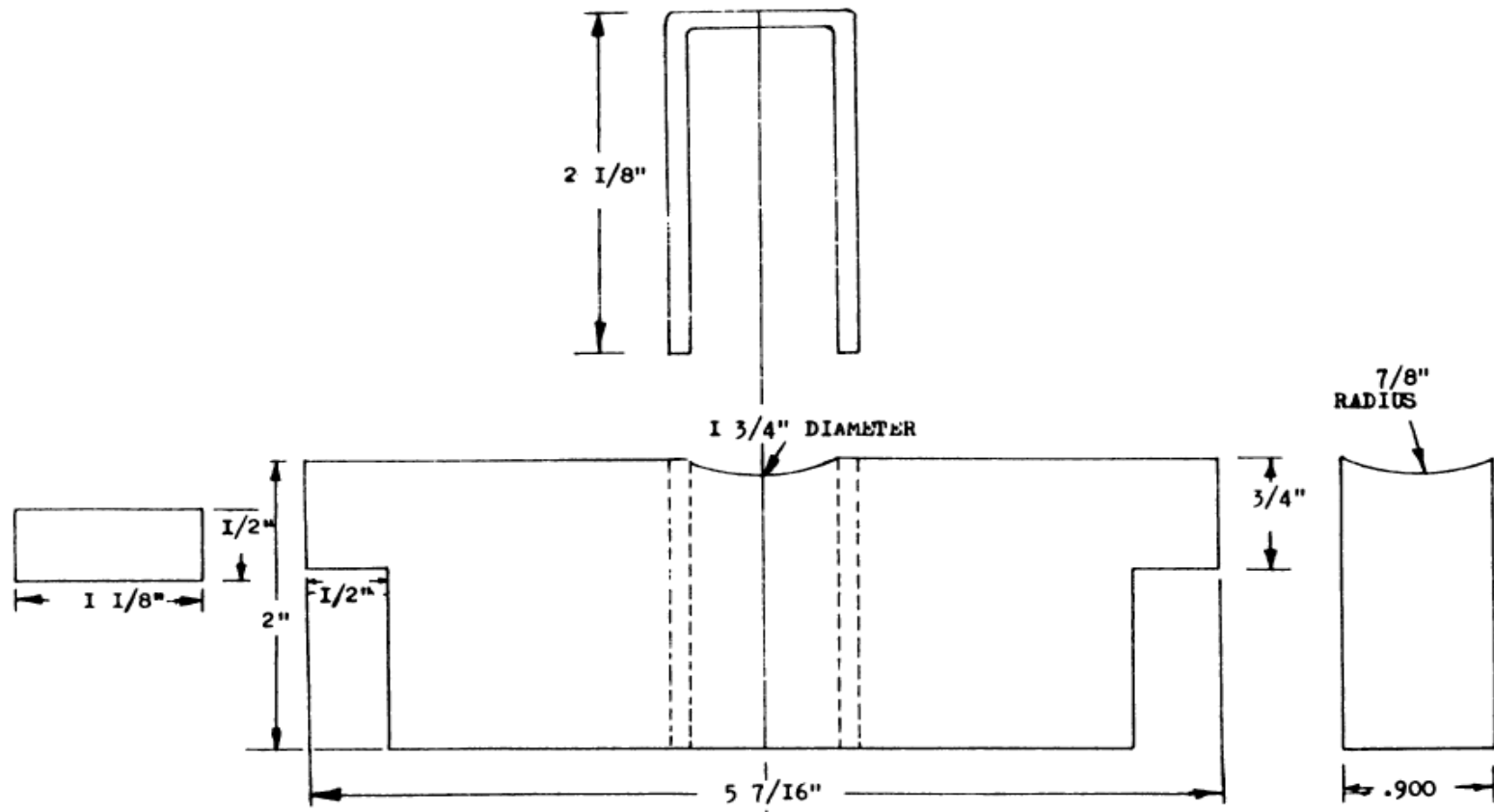
3mm Flacheisen unbearbeitete Oberfläche



Masstab 1:1

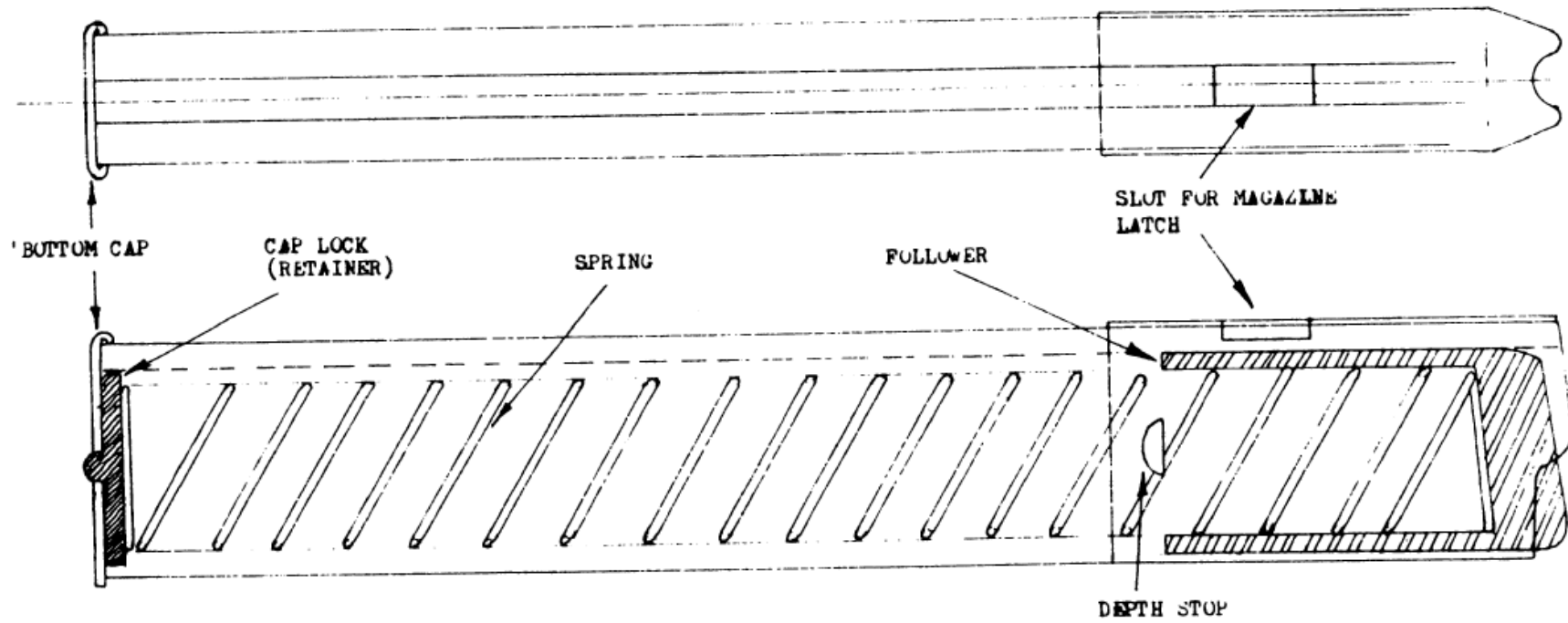


MAGAZINE BOX CONSTRUCTION AND ASSEMBLY

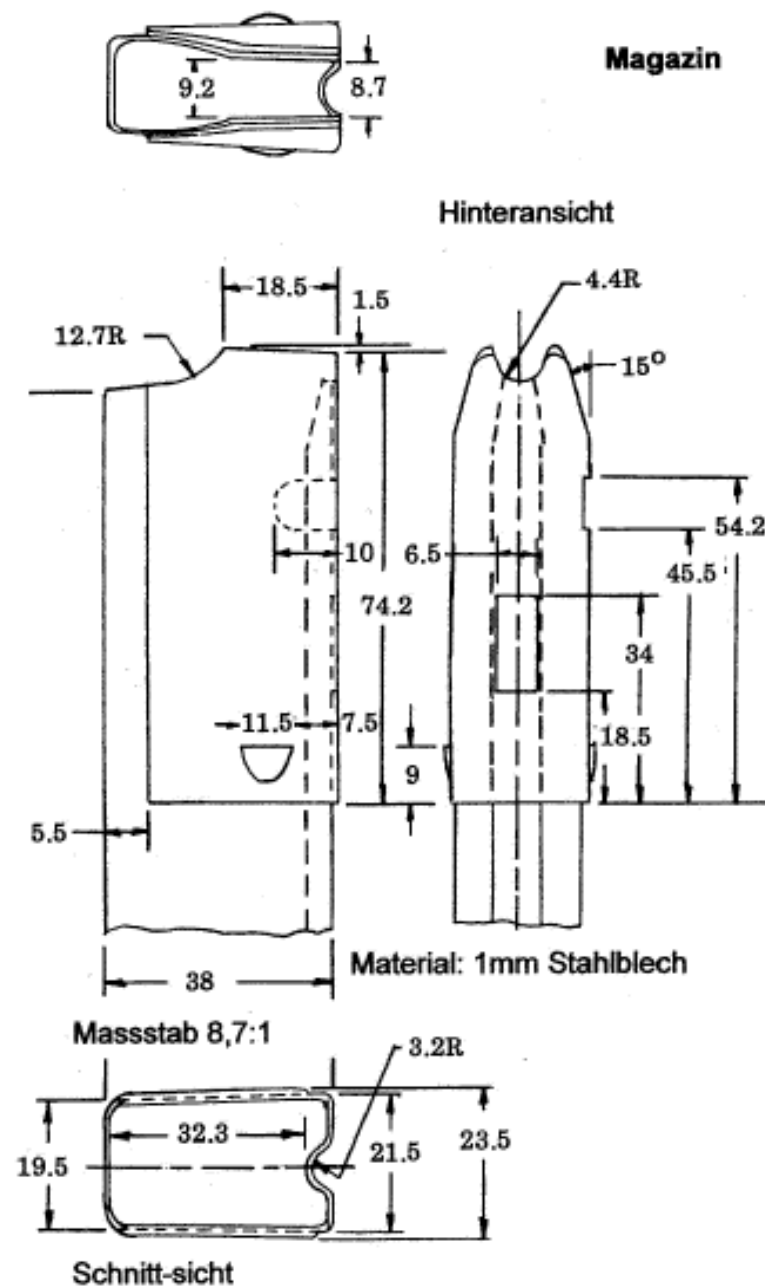


TEMPLATES FOR MAGAZINE HOUSING
 ALL PARTS FROM 1/8" SHEET STEEL

SEAM
BRAZED, SOLDERED,
OR RIVETED

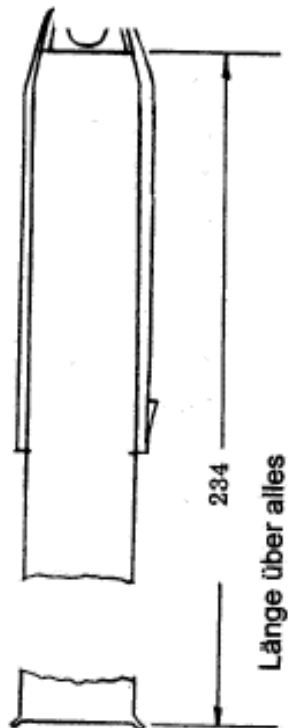


	Feder		Länge	Anzahl Windungen
	Federdraht Durchmesser mm	Feder Durchmesser mm		
Waffenteil				
Auszieher	1	7.1	12	5.5
Magazinfeder	1	8.7	15.5	6
Abschlussdeckel	1.6	26.5	24.5	17
Abzug	0.7	4.6	57	72
Feuerwalhebel	0.45	4.6	14	8
Laufmantelverriegelung	1	8.6	35	15
Federbolzen				
Auszieher Durchmesser		2.5mm	Länge 25mm	
Abzugstange Durchmesser		5.5mm	Länge 24mm	



Vorderansicht

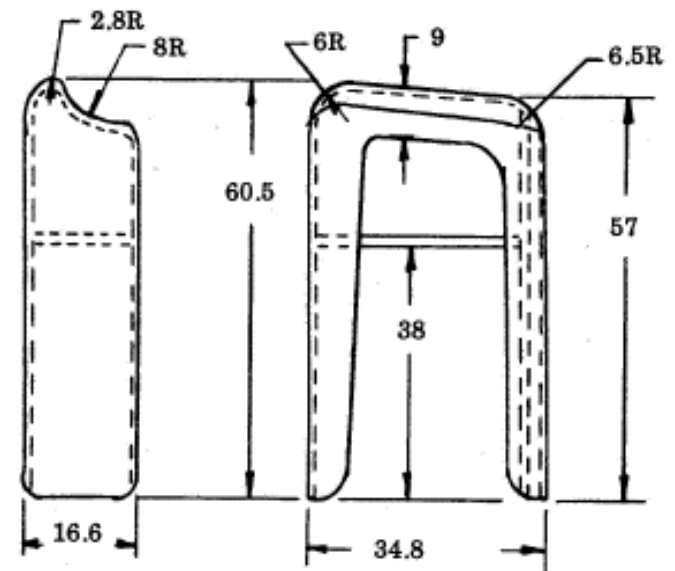
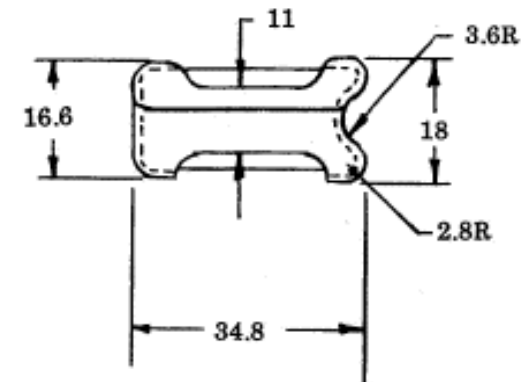
Bemerkung:
Die Magazinherstellung
Ist eine komplexe
Sache. Am besten
verwendest Du ein
schon bestehendes
9mm Para Magazin
und änderst es ab.



Massstab 8,7:1
Material Stahlblech 1mm

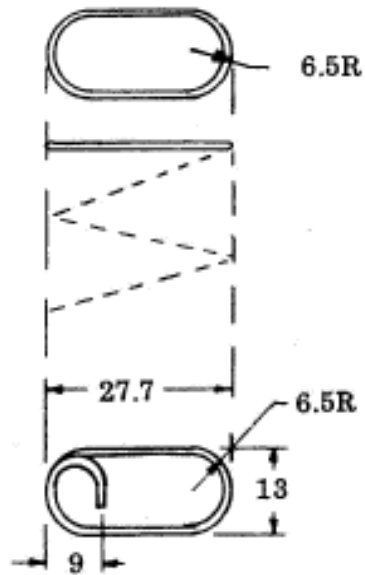
Magazin-Zubringer

Muss im
Magazingehäuse
Gut auf und ab
gleiten



Massstab 1:1
Material Stahlblech

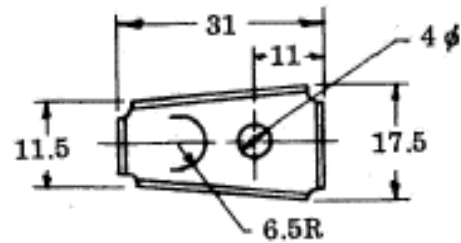
Gesamtlänge
313mm
26 Windungen



Magazinfeder

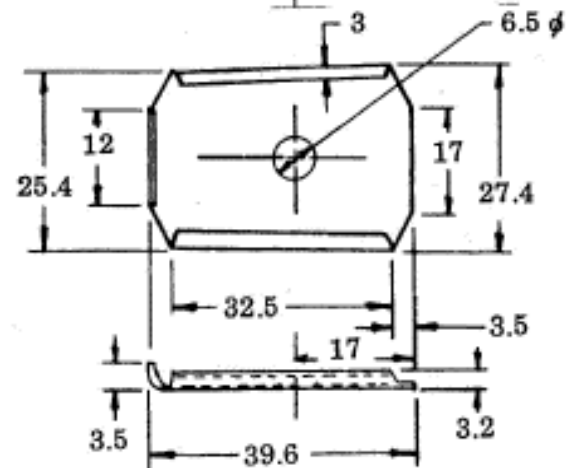
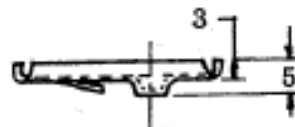
Material Feder-
draht 1,5mm

Massstab 87:1



Magazinboden +
Federhalterung

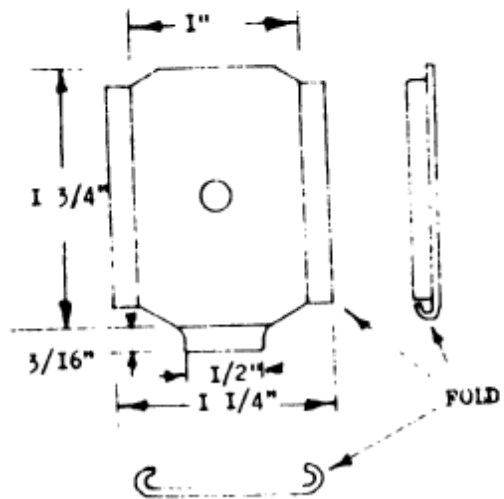
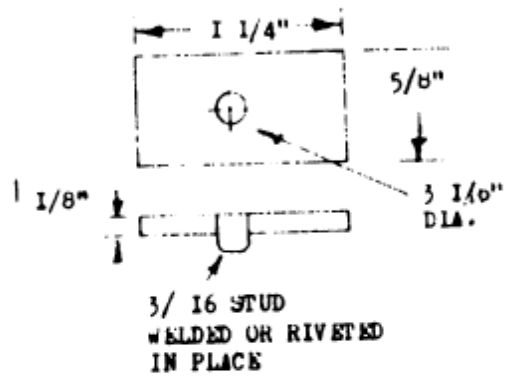
Material
1mm Stahlblech



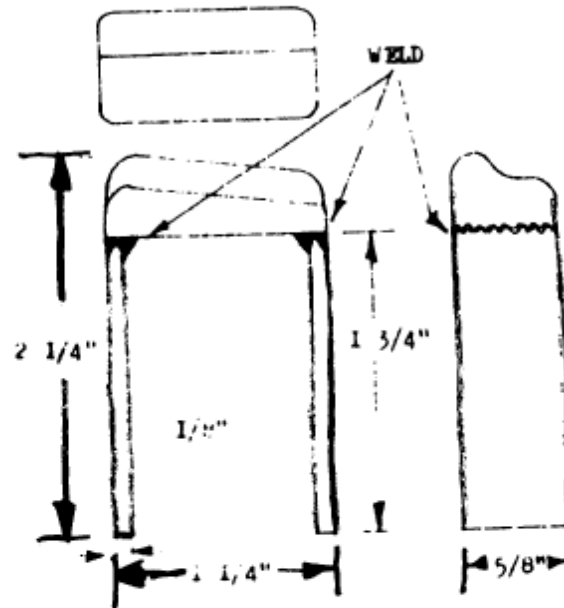
Magazinbodenblech

Material:
1mm Stahlblech

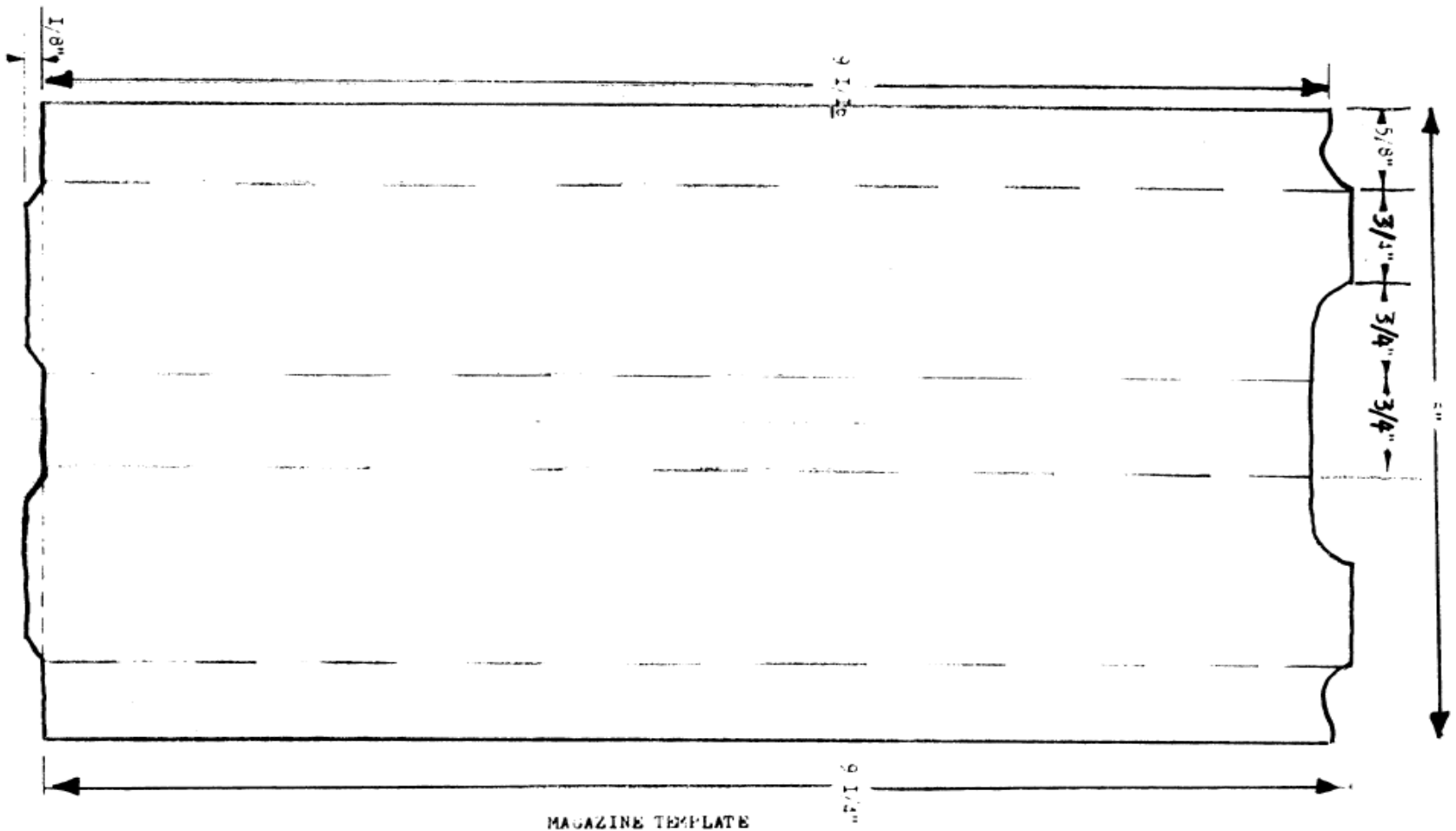
RETAINER



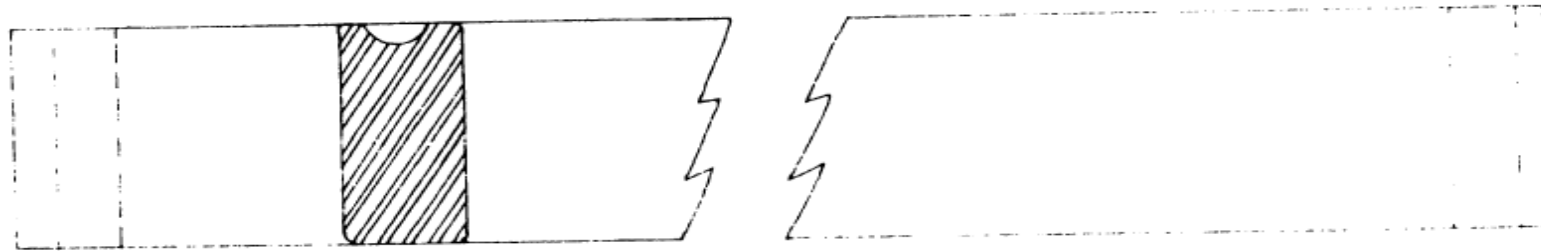
MAGAZINE FOLLOWER



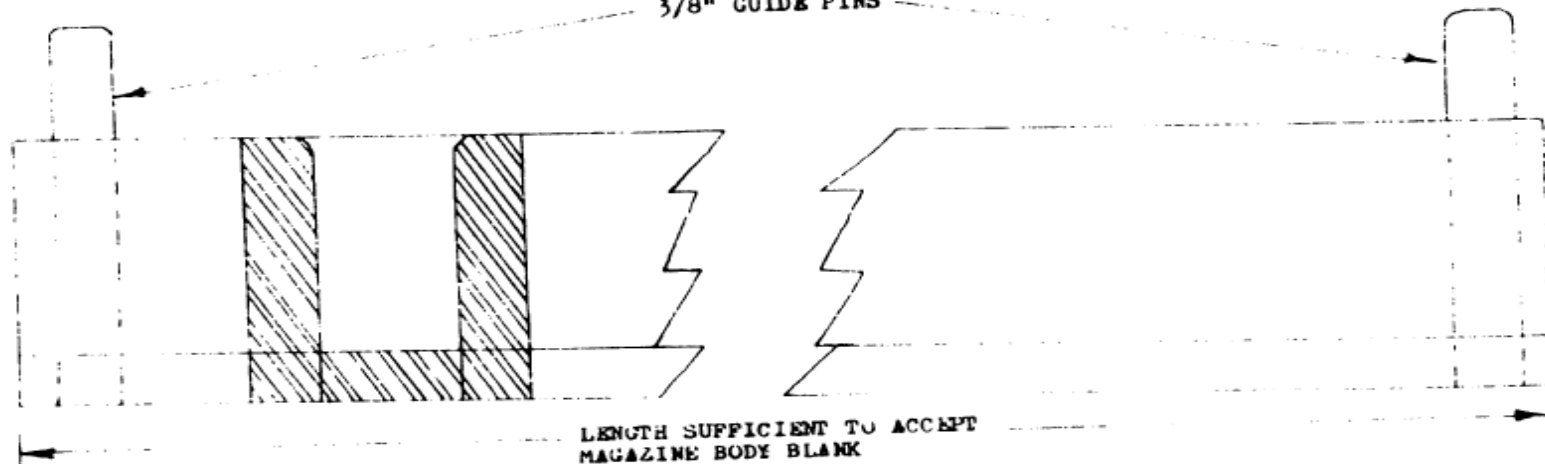
MAGAZINE BOTTOM



MALE DIE



3/8" GUIDE PINS



MAGAZINE FORMING DIES
DIMENSIONS WILL VARY ACCORDING TO THICKNESS
OF MATERIAL, ETC.

