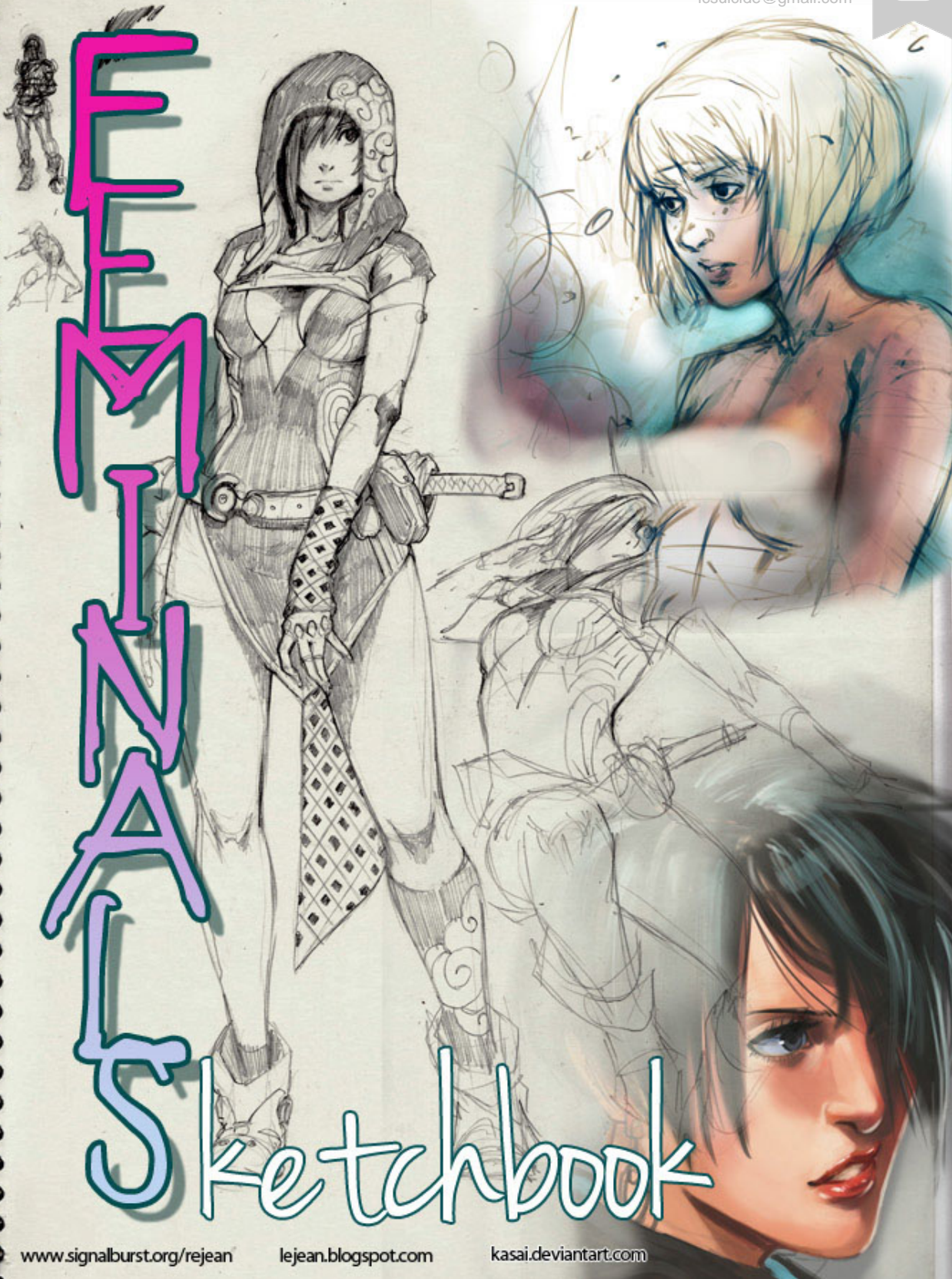




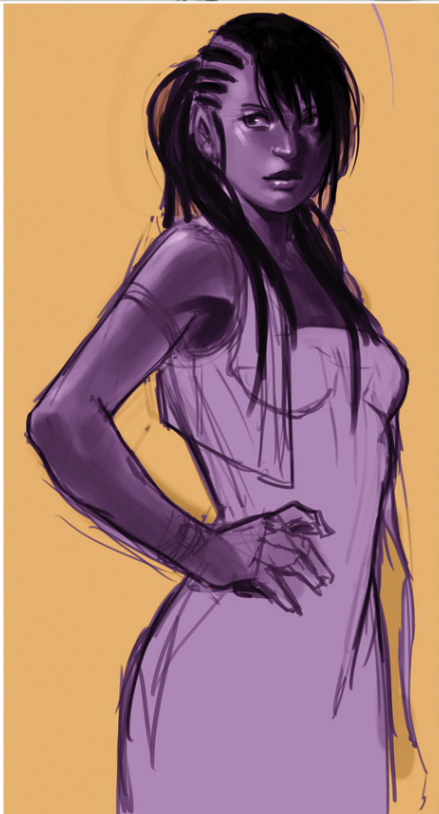
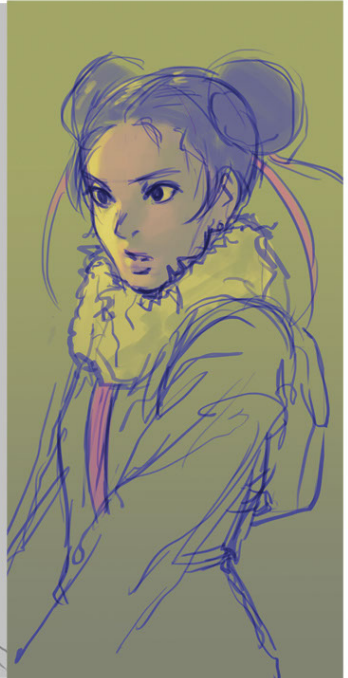
# FEMMINA Sketchbook



[www.signalburst.org/rejean](http://www.signalburst.org/rejean)

[lejean.blogspot.com](http://lejean.blogspot.com)

[kasai.deviantart.com](http://kasai.deviantart.com)

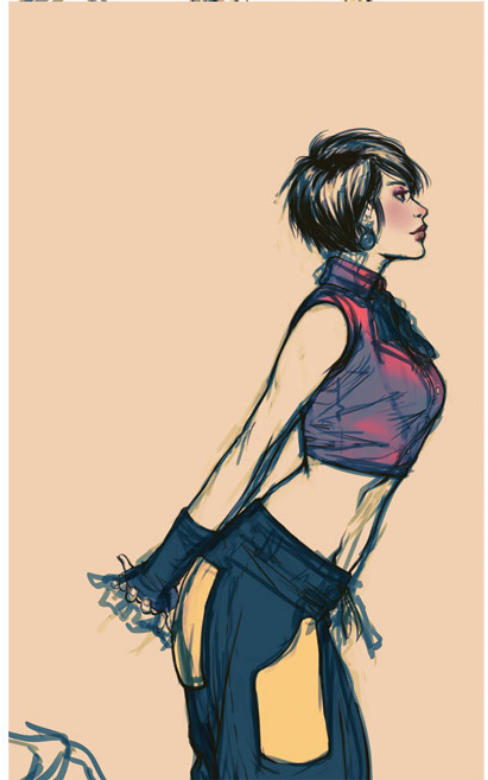


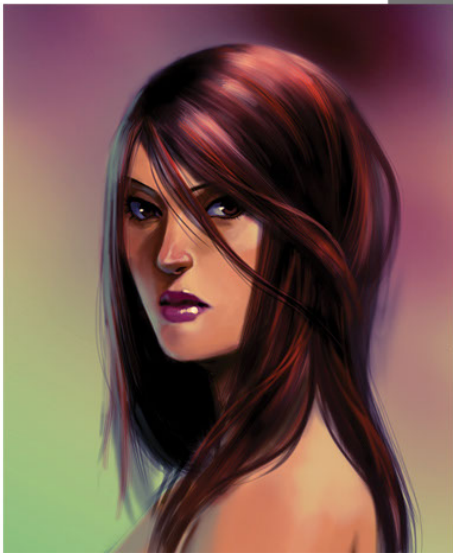
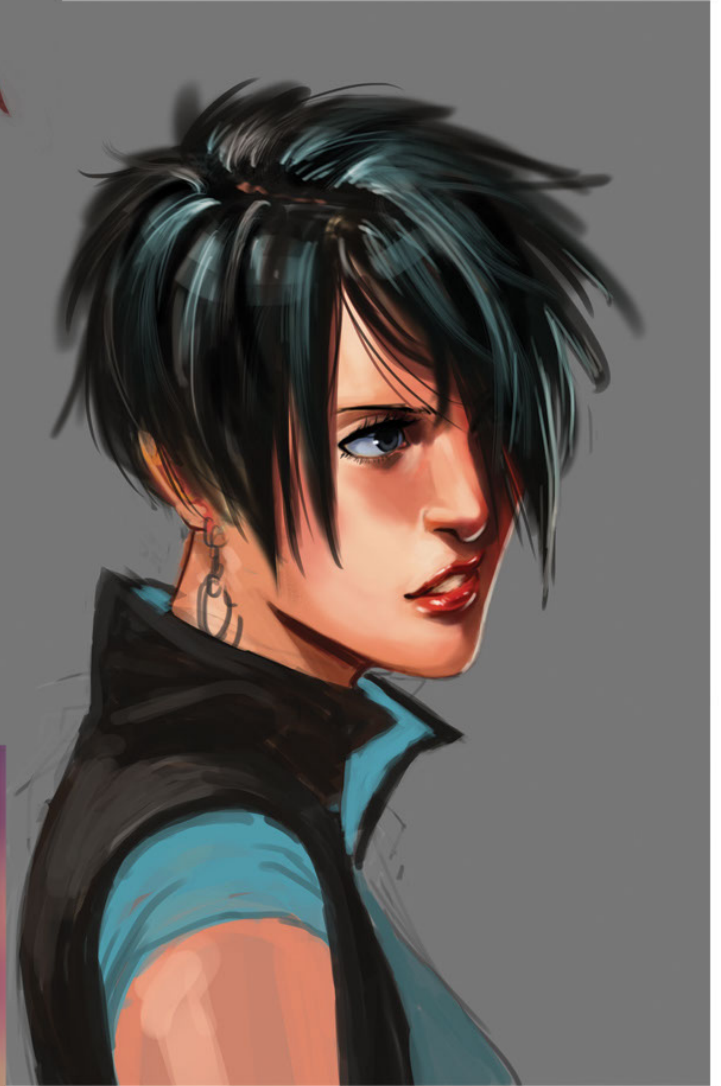
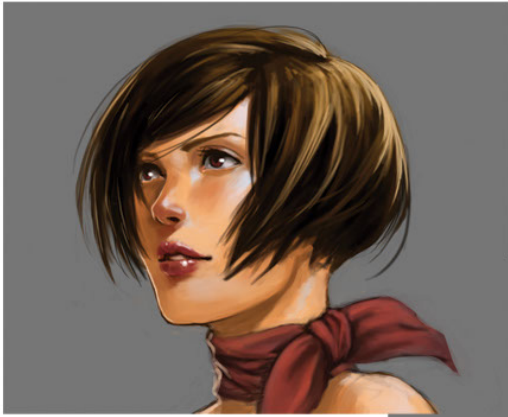












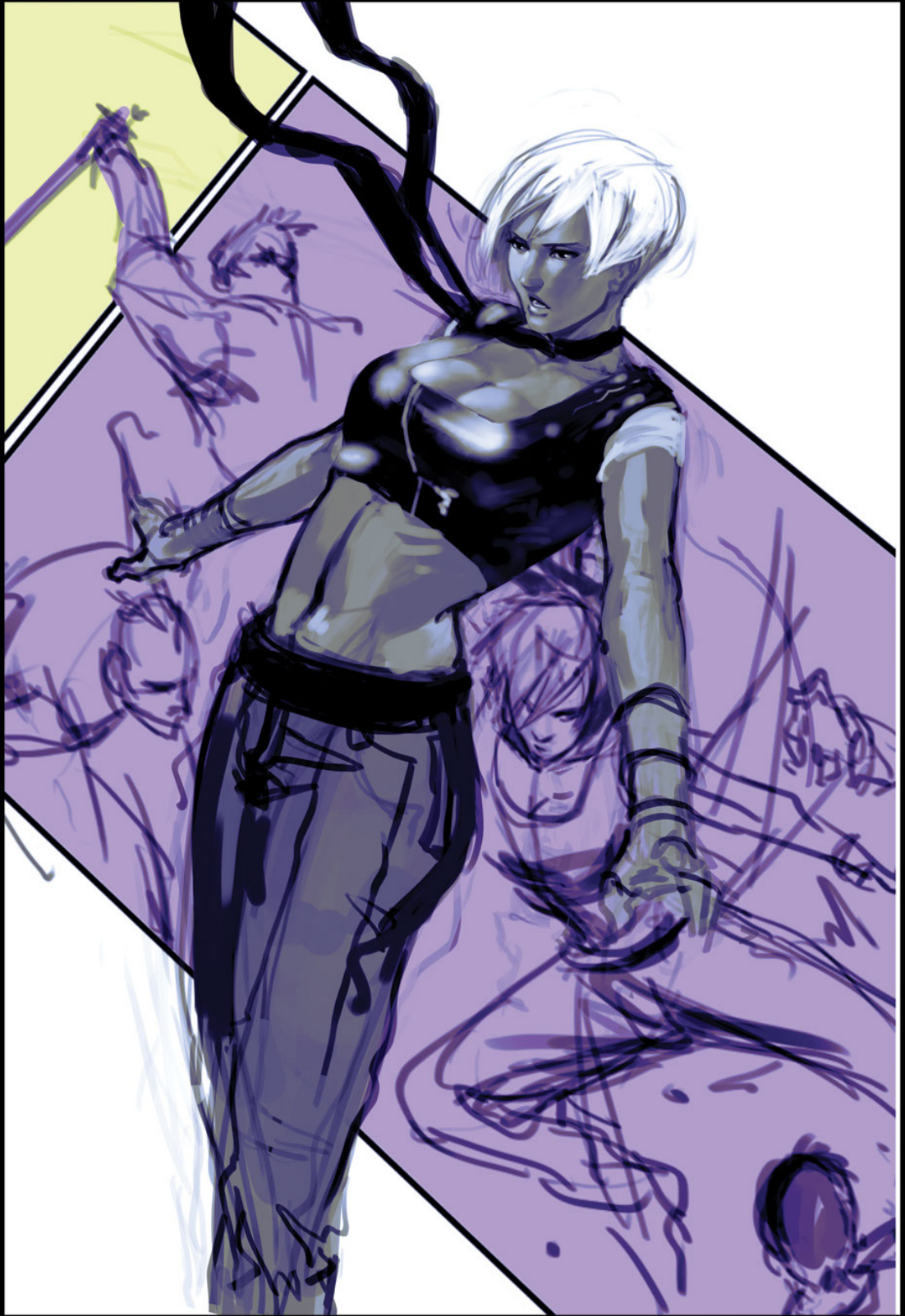




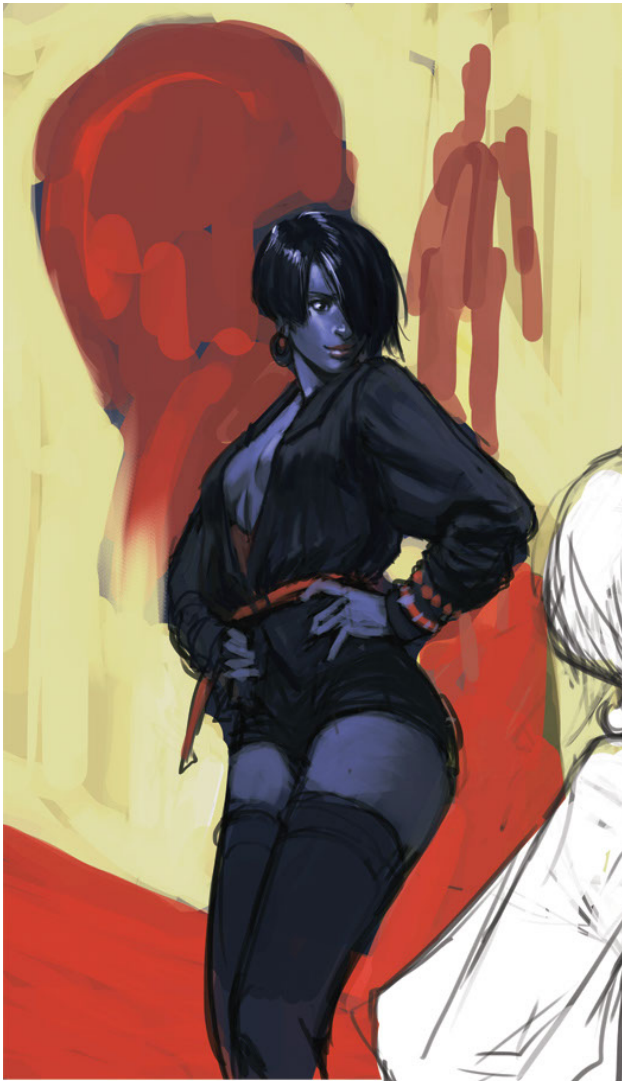




























I usually either start with an idea in mind or just sketch the first thing that comes to mind. In this case, I wanted to do a futuristic fashion design for the Otacool contest on Pixiv.

After finishing the initial sketch, I do an under painting on a separate layer. After the colours are decided, I will do a bit of rendering then make a layer on top and start painting over the line.

From that point, its just chiseling out the details.





<For the background, I used a picture I took around Tokyo Big Site, changed the dimensions, and set a Threshold adjustment to the image.



<Its an honor to be featured in the book with many great artist.



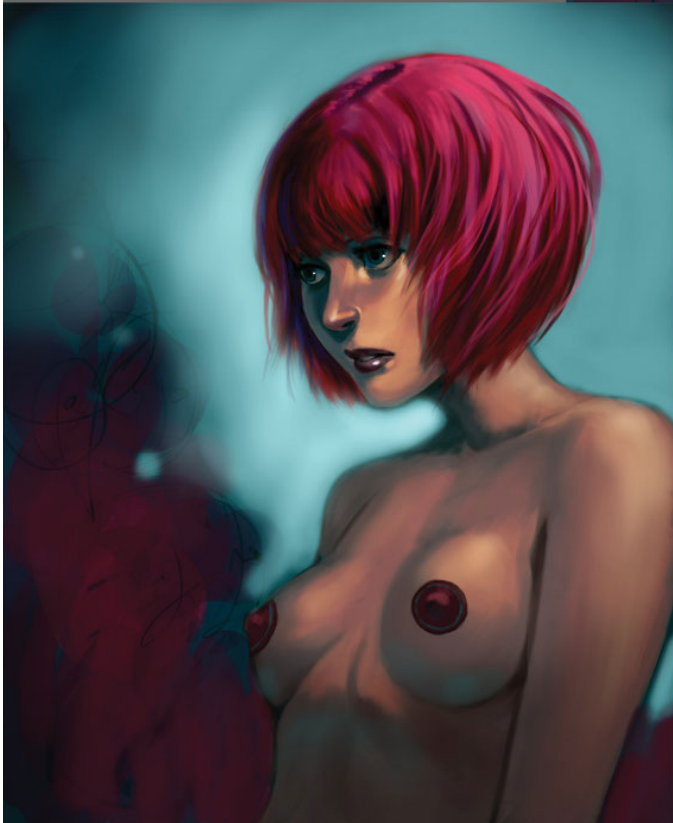
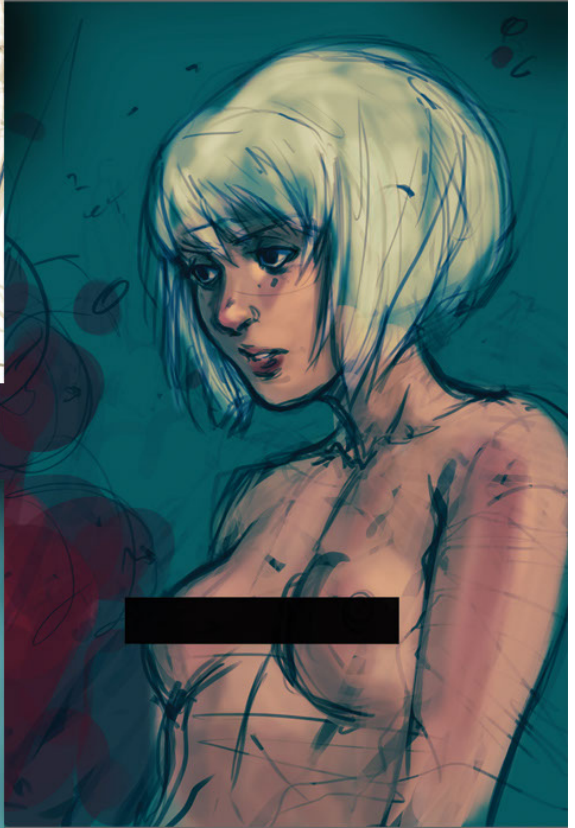




I really wanted to see how much I retained from studying faces so I put more emphasis there. I also wanted to try playing with a chiaroscuro (mouth full right?) style composition. Which is basically darks against lights.

Approach is similar to most of my other paintings.

- sketch
- underpainting
- overpainting







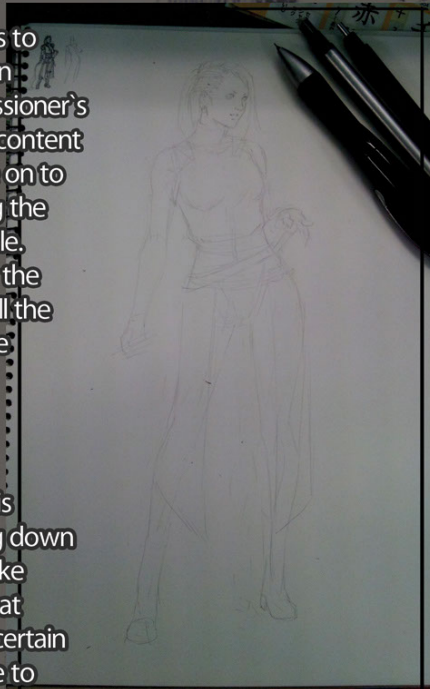
# Commission on Kent: Valentia Belmonte

Commission for NocturneOblivion

Tools: Kent paper  
.5 mechanical pencil  
Tombo erasers

I start with thumbnails to find a pose and design based off the commissioner's description. Once I'm content with a thumb, I move on to draw it larger keeping the lines as light as possible. I really had to turn up the brightness/contrast till the light lines were visible for this image.

After the light rough is finished, I'll start laying down the darks. I guess it's like tracing my own lines at this point. I'll go over certain areas more than once to add more thickness to the lines.



VALENTIA BELMONTE

