



Your WHITNEY automatic pistol represents the very finest in modern engineering design, construction, and performance. The WHITNEY is a rugged weapon built to give years of trouble-free performance. Every WHITNEY pistol is backed by the factory with a guarantee against faulty materials or improper workmanship.

In order to obtain the maximum efficiency built into your WHITNEY, be sure to read the operating instructions.

WHITNEY *firearms inc*

NEW HAVEN, CONNECTICUT
TELEPHONE: CHESTNUT 8-5615

OPERATING INSTRUCTIONS

In order to keep your WHITNEY firing with maximum efficiency and to provide years of trouble-free pleasure, a few simple attentions should be observed.

Do not over lubricate the WHITNEY. It is better to operate with a light film of oil than to use too much oil. Use a high grade gun oil.

The WHITNEY magazine is more rugged than conventional .22 magazines. However, care should be exercised when removing it from the gun, not to drop it or damage the feed lips in any manner. Remember that the magazine is the key to successful feeding of your WHITNEY. Do not allow grit, sand or any foreign particles to get inside.

FILLING THE MAGAZINE

Insert an empty cartridge case into the magazine follower as shown in figure 1. Hold the magazine as shown in figure 2 with the thumb depressing the inserted case gradually as each live cartridge is inserted into the magazine — rim end first.

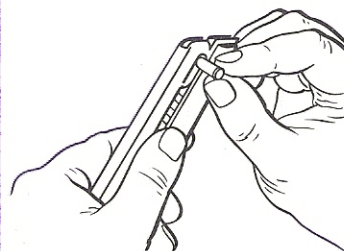


Figure 1

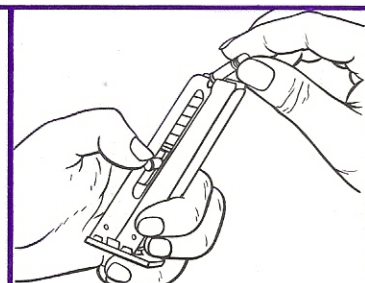


Figure 2

AMMUNITION

The WHITNEY functions with all Standard and High Velocity .22 long rifle ammunition of good quality.

TO FIRE PISTOL

Insert the loaded magazine into the handle making certain it is locked in place properly by the magazine catch.

Pull the cocking piece briskly to the rear and allow to snap forward. DO NOT ease piece forward by hand. THE GUN IS NOW READY TO FIRE. OBSERVE ALL SAFETY RULES AND REMEMBER, THE WHITNEY IS A SEMI-AUTOMATIC PISTOL AND TEN SUCCESSIVE SHOTS MAY BE FIRED BY SIMPLY PULLING THE TRIGGER FOR EACH SHOT.

MANUAL SAFETY

The safety is pushed down to render the weapon safe. This safety can only be operated with the hammer in cocked position. This safety, has a dual function. It not only blocks the sear, but it also disconnects the trigger from the rest of the action. PULLING THE TRIGGER WITH THE SAFETY "ON" WILL NOT DAMAGE THE WHITNEY.

AUTOMATIC MAGAZINE DISCONNECTOR SAFETY

The WHITNEY is designed so that gun cannot be fired while magazine is removed.

It is a safety which is automatic in action and is a safe-guard against the forgotten cartridge in the chamber when the magazine is removed to empty the gun. This safety is only intended to insure against accidents. WE DO NOT RECOMMEND LEAVING THE CARTRIDGE IN THE CHAMBER.

SLIP SAFETY

The hammer itself is a visual safety and it is the only exposed hammer .22 pistol currently produced in the U.S. If the WHITNEY is cocked and ready to fire, you can

see the hammer by day — you can feel the hammer at night.

The hammer is provided with a "slip safety" notch. This should not be confused with a "half cock" notch and the pistol hammer should never be set in this position. The slip safety notch is provided as a precaution to an accidental discharge due to an internal failure of the mechanism caused by misuse or damage to the gun. Never let the hammer down into the slip safety notch with a cartridge in the chamber.

The hammer will fall from this position when the trigger is pulled; however, it does not have sufficient energy in this position to fire a cartridge unless repeated many times deliberately.

Never allow the hammer to rest fully forward in firing position on a live cartridge in the chamber.

SAFETY IN HANDLING

The engineering design has been built around special safety features. These features, however, are of little importance if the shooter is careless in his conduct with a loaded gun, regardless of make.

SIGHT ADJUSTMENT

If lateral adjustment is necessary due to individual preference in sighting or holding, tap the rear sight gently in the direction preferred with a brass or plastic hammer. Move the rear sight the same direction you wish to correct on the target.

CLEARING PISTOL

When the magazine is empty, or if removed before ten rounds have been fired, the piece should be snapped manually several times to clear the chamber. Visual inspection must be made before weapon is considered empty. (see "Automatic Safety Disconnecter")

PRACTICE OR "DRY FIRING"

It is advisable to insert a fired case into the chamber for "dry firing." This will alleviate possible damage to the firing pin and to the barrel.

HOW TO FIELD STRIP YOUR WHITNEY

The WHITNEY pistol has a unique system of take-down which does not require the use of any tools. The extractor and firing pin which ordinarily require tools can be easily removed in the WHITNEY by hand. Modern smokeless powders and anticorrosive primer mixtures alleviate the necessity of cleaning the barrel after each firing. However, long periods of continued firing may collect a heavy deposit of grease from the cartridges. This build up of grease should be cleaned when the necessity arises. **REMEMBER, A CLEAN GUN IS A RELIABLE GUN.**

1. The first step in stripping the WHITNEY is to check the chamber and magazine making absolutely certain they are empty.
2. Replace the empty magazine into the handle and pull the trigger, then remove magazine.
3. Depress the lock plunger in the muzzle flush with the frame and remove the nut on the end of the barrel by turning in a counter clockwise position. (Fig. 3)
4. Move hammer to full cock position.
5. Grasp the cocking handle; pull the tube assembly out of the rear of the frame. (Fig. 4)
6. Remove the key and washer from the front of the barrel. If the key does not come out with the barrel and tube assembly, remove it from the muzzle of the frame.
7. Remove the firing pin locking key on top of the slide. This is sometimes accomplished easier by turning the tube upside down and snapping the barrel several times. The shock will cause the key to drop out.
8. The firing pin may then be removed to the rear.
9. The breech block retaining pin may then be removed by pulling the barrel forward slightly and held in this position while the retaining pin is pushed out. The end of the firing pin is convenient for this purpose. The reason for pulling the barrel forward is to take tension off the retaining pin for removal. (Fig. 5)
10. The breech block and barrel may be removed from the tube.
11. The extractor may be removed by merely lifting it out of its recess. The extractor plunger and spring may be removed from the front of the breech block. Some precaution must be taken to keep the extractor from jumping out of the breech block
12. It is recommended to leave the ejector assembled to the barrel, however if this is to be removed, care must be exercised not to bend this component as it may effect ejection.

To ASSEMBLE the WHITNEY use the reverse sequence.

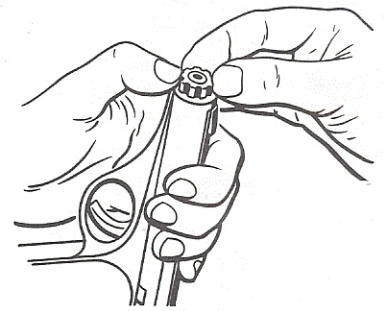


Fig. 3

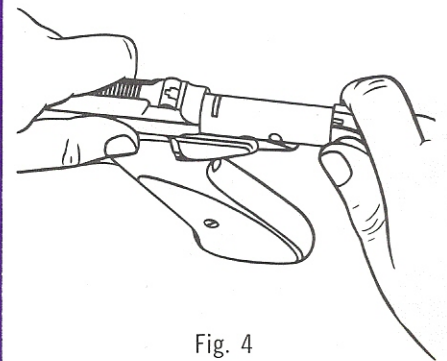


Fig. 4

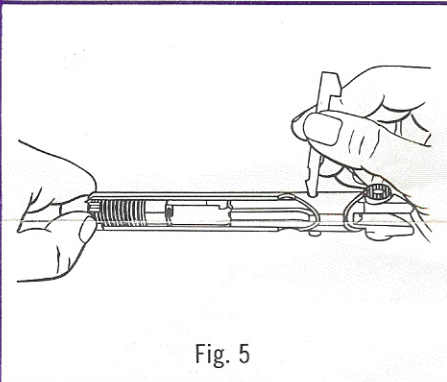


Fig. 5

FACTORY SERVICE

If your WHITNEY needs an overhaul, we have a complete parts inventory and factory trained experts to expedite your needs. We take pride in our policy of giving customers immediate service.

The pistol should be carefully packaged and marked to the attention of the Service Dept. Unless you have a federal firearms dealers license, you cannot ship via parcel post. We recommend shipment via railway express. We will not accept any packages at the factory unless sent prepaid.

COST ESTIMATE

Upon receipt of your WHITNEY a cost estimate will be forwarded to you by return mail for your approval before commencing any repairs. A minimum of \$3.50 will be charged on all factory service other than warranty repairs.

SPARE PARTS

Due to the cost of processing each shipment, a minimum charge of \$1.00 will be made. Be sure to note the Serial No. of your WHITNEY and include the part code and number when ordering parts.

Example: Serial 110212 — Part No. JLM 005 — Barrel

FRAMES

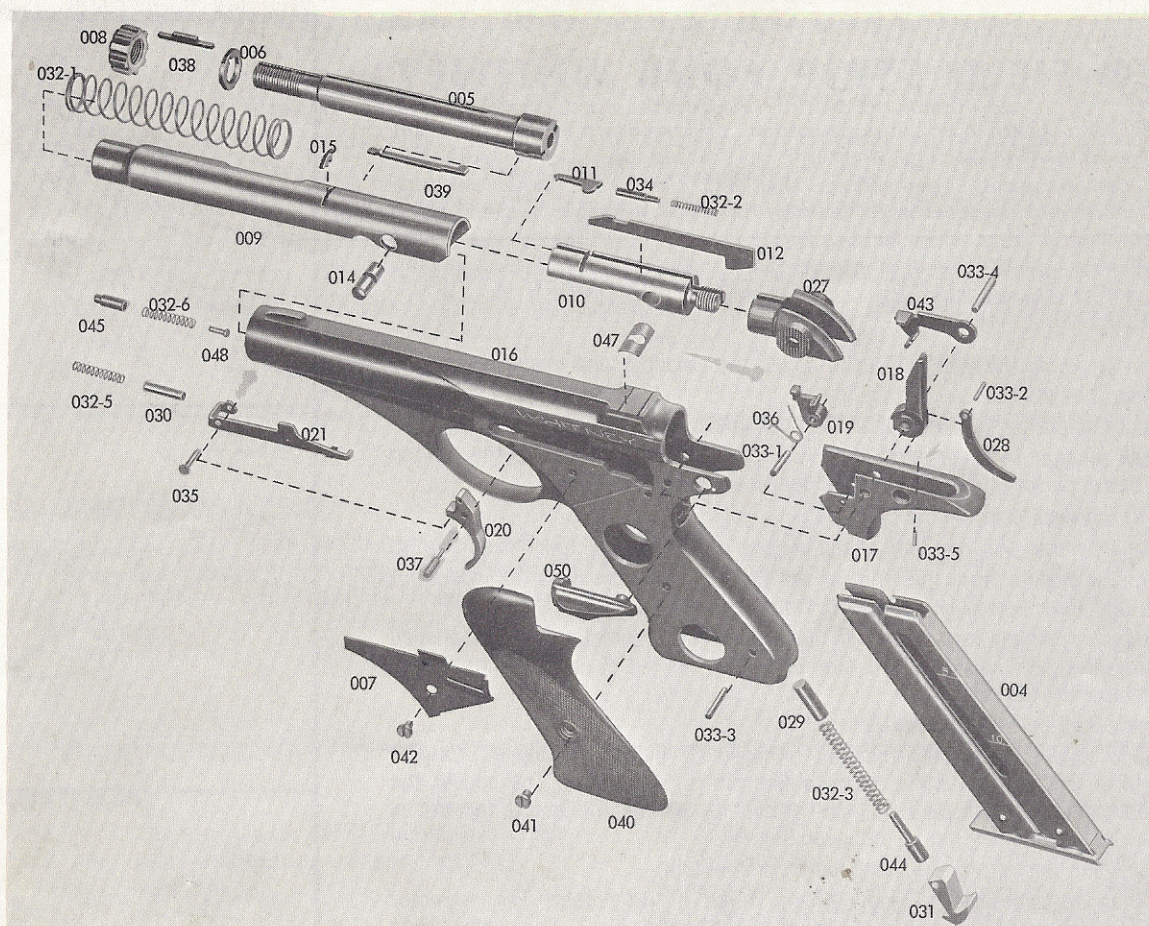
JLM 016 frames will not be sold unless the damaged frame is first returned to the factory. The new frame will be numbered identical to the original gun.

MAGAZINES

You will note on the parts list that magazines are only sold as a complete assembly.

HOW TO MAKE PAYMENT

Remittances must accompany all spare parts orders. Check, drafts or money orders are acceptable. Do not send stamps.



PART No.	PART NAME	PRICE	PART No.	PART NAME	PRICE
JLM-004	MAGAZINE ASSEMBLY COMPLETE	\$ 4.50	JLM-032-2	EXTRACTOR SPRING	.25
JLM-005	BARREL	6.25	JLM-032-3	HAMMER SPRING	.25
JLM-006	BARREL SEAT	.40	JLM-032-4	MAGAZINE SPRING*	
JLM-007	SIDE PLATE	1.25	JLM-032-5	TRIGGER SPRING	.25
JLM-008	NUT	.60	JLM-032-6	LOCKING PLUNGER SPRING	.25
JLM-009	TUBE	9.00	JLM-033-1	SEAR PIN	.25
JLM-010	BREECH BLOCK	10.00	JLM-033-2	STRUT PIN	.25
JLM-011	EXTRACTOR	.60	JLM-033-3	MAGAZINE CATCH PIN	.25
JLM-012	FIRING PIN	.60	JLM-033-4	HAMMER PIN	.25
JLM-014	BREECH PIN	.40	JLM-033-5	SAFETY LOCK PIN	.25
JLM-015	FIRING PIN LOCK	.25	JLM-034	EXTRACTOR PLUNGER	.25
JLM-016	FRAME (Not Sold on Mail Order)	19.75	JLM-035	TRIGGER CONNECTOR	.40
JLM-017	ACTION FRAME	4.00	JLM-036	SEAR SPRING	.40
JLM-018	HAMMER	2.00	JLM-037	TRIGGER PIN	.25
JLM-019	SEAR	2.00	JLM-038	BARREL KEY	.25
JLM-020	TRIGGER	1.75	JLM-039	EJECTOR	.50
JLM-021	SEAR BAR	1.50	JLM-040	PISTOL GRIPS	(Pair 2.50)
JLM-022	MAGAZINE SHELL*			(Specify Right or Left)	(Each 1.25)
JLM-023	MAGAZINE BOTTOM*		JLM-041	SCREW, PISTOL GRIP	.25
JLM-024	MAGAZINE FOLLOWER*		JLM-042	SCREW, SIDE PLATE	.25
JLM-025	MAGAZINE BOTTOM LOCK*		JLM-043	MAGAZINE DISCONNECTOR SAFETY	1.25
JLM-026	MAGAZINE INSERT*		JLM-044	HAMMER SPRING SEAT	.40
JLM-027	COCKING PIECE	2.50	JLM-045	BARREL LOCKING PLUNGER	.40
JLM-028	STRUT	.40	JLM-046	MAGAZINE CROSS LOCK	
JLM-029	HAMMER SPRING PLUNGER	.25	JLM-047	REAR SIGHT	.75
JLM-030	TRIGGER SPRING PLUNGER	.30	JLM-048	SPRING SEAT PIN	.40
JLM-031	MAGAZINE CATCH	1.00	JLM-049	MAGAZINE SHELL ASSEMBLY*	
JLM-032-1	MAINSRING	.75	JLM-050	SAFETY	2.00

* Not Sold Separately

* Not Sold Separately