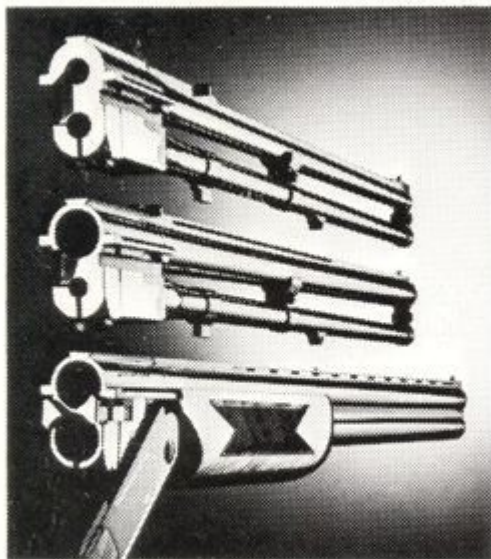


VALMET 412 Series

Owner's Instruction Booklet for the
Shooting System



- WARNING -

You must read this booklet before assembly or operation of this gun. Caution must be taken in several areas because personal serious injury or damage to this gun is possible if procedures detailed herein are not followed.

TABLE OF CONTENTS

	Page
Handling	3
Assembly	4
Disassembly	6
Cleaning	8
Extra Barrels	8
Assembly of Additional Stocks	8
Locking Bolt	9
Choke Markings	10
Loading and Firing	10
Cocking Indicators	12
Sighting in of Double Rifle	12
Sighting in of Shotgun Rifle	14
Double Trigger Assembly	15
Installation of Scopes	16
Service and Repair	16
Final Warning	16
Spare Parts	18-19

HANDLING

1. Always check the chambers to be certain they are empty. Always handle your gun as if it were loaded. Do not point the barrels at another person. Do not try fire any gun as it may harm the firing mechanism. Keep your thumb-operated safety in the safe position except when ready to fire your gun.
2. Always check the barrels before firing to make sure they are free from obstruction. Even a small obstruction may ruin your barrels. If barrels and chambers are coated with protective oil, run a clean swab or patch through the barrel to remove excess oil before shooting.
3. Be sure that you are using the same gauge or caliber cartridges that your gun is designed to fire. Be particularly careful with .12 and .20 gauge loads since they appear to be the same size. Do not mix shotgun shells of different gauges. This will only increase the chances of even the most careful shooter misloading and damaging the gun. The same precaution applies to Rifle cartridges as well.
4. Load the gun only in hunting and target shooting environments. Remove shells when you leave that area. Do not drive with a loaded gun.
5. Always be aware of the background before you shoot. Be especially careful of a ricochet when shooting across or at a target in water. Be very careful when shooting near rocks and other hard objects because of ricocheting shot or bullets.

6. The gauge and chamber length are stamped on the rear left-hand side of the barrels. In this same area you will find the choke and pressure obtained by high-pressure test on shotguns. Both 2-3/4" and 3" loads may be used only if the barrels are stamed 3" chambers. Barrels stamed 2-3/4" cannot use a 3" or "Magnum Load".

ASSEMBLY

1. Carefully read this booklet until you are thoroughly familiar with your new Valmet and prior to any attempt at assembly. Failure to do so could result in damage to the gun. Numbers in brackets coincide with Parts List on Page 18.

2. Check the chambers to be sure they are empty.

3. Check the bore of each barrel to be sure that it is clear and use a dry clean patch to remove any oil or lubricant.

4. Remove the barrels and forend assembly from the packing box as a unit. Place this units in your lap, muzzle to the left. Now use your right forefinger to lift the spring loaded forend snap assembly [57] upward until it stops. Maintain pressure. With your left hand lift the FRONT END of the forend wood upward and in an arc toward the chamber end of the barrels. This frees the forend component from the barrel component. This is a close fit and care should always be taken when attaching or removing the forend component.

5. With the receiver in your right hand, push the top snap [2] to the right side until it locks. When moved to the right, the top snap will also move the locking bolt [1] rearward to the locked position, and also, the automatic safety button [6] to the rear to the safe position. No attempt should ever be made to assemble the barrels to the receiver until this step is taken.

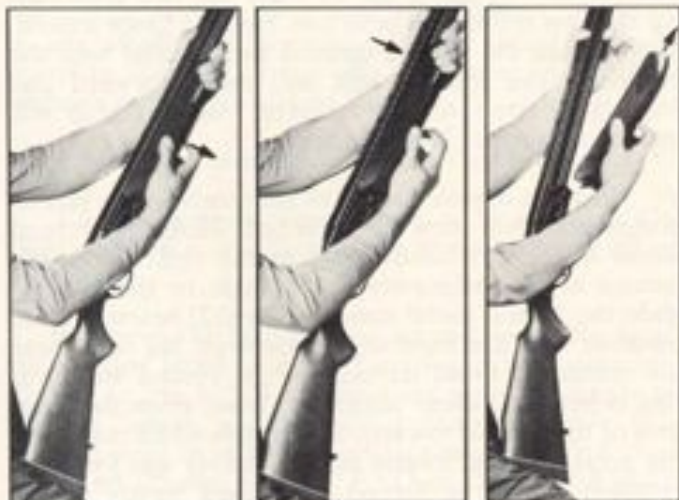
6. To assemble the barrel component to the receiver component, hold the stock in the right hand, as shown in the photo. Hold the barrels in the left hand with the muzzle down at about a 45° angle. Pull downward and forward at this angle to mate the two pilot pins and the top small pins with the barrels. Once mated, simply push the barrels upward and parallel with the receiver. The locking bolt will move forward and lock the barrels to the receiver, the top snap will move to its center lock position.

7. With the barrels locked to the receiver, the forend component may now be attached. Hold the forend wood in the left hand, stock in the right. With the forend at approximately a 45° angle to the barrels, slide the forend metal components [52] rearward into position with the front of the receiver. Be sure these are mated to avoid damage to the forend wood, as this is held to a close tolerance. Now, pivot the front end of the forend towards the barrels while maintaining pressure. The forend snap assembly will lock into position when the forend is pressed tightly to the barrels.

8. The gun is now assembled. To open the action simply push the top snap to the side with your thumb while exerting downward pressure on the barrels.

DISASSEMBLY

1. Check the chambers. If there are shells in either of the barrels remove them. You are now ready to disassemble the gun. Securely rest the gun's butt against your upper leg, grasp the barrels above the forearm with your left hand. Place your right hand on the forearm so that you can open the forearm release with your fingers. When the release is open slowly pivot the forearm downward with the help of your left hand.



NOTE: Do not pivot forearm with undue force. This could damage the cocking lever or mar the forearm wood.

2. If you keep your gun disassembled for a long period of time, uncock the locking plate and fire the cocked barrels as follows: Press on the top tang with your thumb which will shift the locking shield slightly rearward. Press down on the top slide trip located below the right side of the locking shield with a screwdriver or with corresponding tool. This will allow the locking shield to slide forward.



Push the automatic safety forward to its "fire" position and pull the trigger.

CLEANING

Proper cleaning of any fine gun lengthens its effective life and assures trouble-free service. We recommend that only high quality components be used in maintenance. Your Valmet dealer will be pleased to assist you in this selection. It is advisable to clean the gun after use and leave all surfaces with a light coat of protective gun oil prior to returning it to the case. In humid or salt atmosphere, a heavier type of protective gun oil will be necessary. Remember to clean all bores and chambers of oil prior to firing the gun.

EXTRA BARRELS

A wide assortment of barrels are produced for the Valmet 412 models. Your Valmet dealer has the most recent list available and will be able to place your order for you. He can also advise approximate delivery time if he does not have your choice in stock.

ASSEMBLY OF ADDITIONAL STOCK

In the Valmet 412 Series, the stock [60] is attached with one main screw [62] to the action, so you find it very easy to change the stock.

Remove first butt plate [66] by opening two screws [70]. As to rubber butt plate the screws are located in a place not visible, but with a narrow screw driver you easily find the heads. After having removed the butt plate you then open the main screw with a long screw driver, unscrewing 3-4 times with the result that the action will be feed from the stock about 1-3 mm. You then loosen the screw and remove the stock.

If you change the old stock for a brand new one check fitting surfaces on the front of the stock and press the stock in its place. If the stock is not properly engaged, hit receiver and stock slightly together.

By screwing the main screw up tight, the stock is now attached. Then engage the butt plate and the new stock is fit for use.

LOCKING BOLT

The 412 Series is equipped with a sturdy locking bolt slide [1]. When closing the gun let the locking bolt snap forward under its own force. Do not aid or retard this movement because if the action does not close by itself there may be debris, sand or other small objects between the action and the barrels. If so, open the gun, remove the shells, and clean the receiver and barrel surfaces. Keep the polished breech bolt area and lightly oiled.

CHOKE MARKINGS

The following choke symbols are used on Valmet shotguns:

- F Full Choke
- IM Improved Modified
- M Modified
- IC Improved Cylinder
- C Cylinder

These symbols, as well as the serial number and testing stamps, will be found on the rear, left side of the barrels. The serial number is also stamped on the bottom of the receiver.

LOADING AND FIRING

1. Open your gun by moving the top tang [2] to the right. This will slide the locking bolt [1] back. Then by placing the pistol grip against your body, you can open the gun.



2. When the breach is opened, the safety [6] simultaneously moves to the safe position. Check the barrels into each chamber (or the single chamber which you wish to fire), and close the action. NOTE: When the action is closed, keep the barrels pointing at the ground or in a safe direction. Do not point the gun at another person at any time.

3. Note that the left side of the trigger has an arrow pointing upwards. To fire the upper/top barrel, simply press the selector button [36] IN. Note that the right side of the trigger has an arrow pointing down. To fire the bottom barrel first, simply press the selector button IN.



Remember that you press the selector button IN to choose which barrel fires **first**. By pulling the trigger [35] a second time, the other barrel will fire. **NOTE:** The finger must free the trigger between shots and be pulled again to fire the second barrel. The major advantage to this type of firing mechanism is that it is not recoil-operated. The second barrel will fire even if the first barrel is empty or misfired.

COCKING INDICATORS

To the rear of the safety slide are two plated pins. These are the cocking indicators [9]. When the action is cocked, both pins will protrude above the surface. When a barrel is fired, the appropriate pin drops below the surface. The letter "U" just behind the left pin is the UNDER barrel indicator; the letter "O" indicates the OVER barrel and is the right side pin.

This is a unique and useful feature of the Valmet. It is also a useful safety feature, since it informs the user if the action has been fired or is cocked and ready to fire.

SIGHTING IN OF DOUBLE RIFLE

1. General:

Facts to be considered:

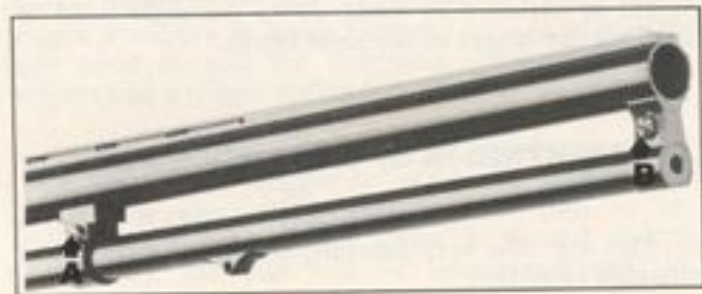
- always shoot double shot, lower barrel first.

- several, fast, repeated shots increase the temperature of the gun quickly, which makes sighting in of the rifle more difficult, to some extent.
- always tighten the regulating screw quite tight, before sighting in the rifle.
- when using a scope on your double rifle, you may have to adjust the point of impact of both barrels.
- if you want to use different loads and bullets, you must change the adjustment between the barrels.

2. Dry the barrels of oil with care, as well as the cartridge chamber.

3. Load both barrels and first shoot the lower barrel. Check the point of impact and shoot the upper barrel without opening the gun, between the shots. Check the point of impact.

4. The points of impact are adjusted by sliding the connecting ring located at the middle of lower barrel. A. If the barrels shoot too much crosswise, (upper barrel down and lower barrel up) adjustment is made by the connecting ring. Slide it so as the barrels become closer to each other.



If both barrels are shooting correctly with respect to one another, ie. if the lower barrel is shooting lower and the upper barrel, higher, yet the distance between the respective points of impact is too great, the connecting ring is adjusted so as to increase the gap between the barrels. Adjustment of the connecting ring cannot be predetermined. The adjustment marking was factory set for a distance of 100 meters, resulting in a group of less than 100 mm with the type of bullet specified in the guarantee card.

Horizontal adjustment of the points of impact is done by turning the screws B at the muzzle of the barrel set. If, for example, the lower barrel shoots left from the target point, the adjustment crews are opened and the adjustment screw is turned so as to move the lower barrel to the right with respect to the target line. The adjustment marking at the muzzle of the gun was factory set for a distance of 100 meters with a group of less than 50 mm.

5. The point of impact of the gun is removed sideways to the target point, by sliding the sight plate into the required direction.

Height is adjusted by filing down the sight bead or changing the height of the sight beads.

SIGHTING IN OF SHOTGUN RIFLE

1. Dry the rifle very carefully of oil, as well as the cartridge chamber.

2. Shoot the rifle sighting in shot at the distance you wish. Check the point of impact.

3. In the vertical position, the point of impact is changed to the target point, by sliding the connecting ring. For example, if the aim must be higher, slide the connecting ring so the rifle goes further away from the shot barrel.

4. In order to preserve the point of impact of the shot barrel, avoid big changes in the sight bead's height and sideways turning of the sight plate.

5. When you want to use a scope or an equivalent device the barrel adjustment don't need to be changed.

DOUBLE TRIGGER ASSEMBLY

Any Valmet O/U configuration can be equipped with this double trigger mechanism.

A gunsmith may change your gun from a single to a double trigger or reverse. For example, when a single trigger assembly is being changed to a double, you only need to add the following components: two triggers and a trigger spring [67, 68, 69].

For the under barrel there is an adjustment screw [100] on the rear trigger to adjust the pull length. This screw also adjust the ratio of pull to re-characteristics. When the screw is turned tighter (clockwise), the pull will be lengthened and the

corresponding release shortened. The reverse is true when the adjustment screw is loosened (counterclockwise). The trigger assembly and firing mechanism in your Valmet gun are factory preset, but may be slightly adjusted to better suit your particular shooting needs.

INSTALLATION OF SCOPES

On combination shotgun/rifle and double rifle there is a groove for the stop pin in the middle of the 1/2" base especially for the Valmet scope mount. The proper installation of even heavy scopes can be assured when using this groove and this unique mount design which incorporates the "three point principle". Once you have your scope zeroed in, you may never have to adjust it again because this design means that you can remove the scope for transportation or cleaning and return it to exactly the same position. Valmet recoil-reduced scope mounts are available for 1" scopes.

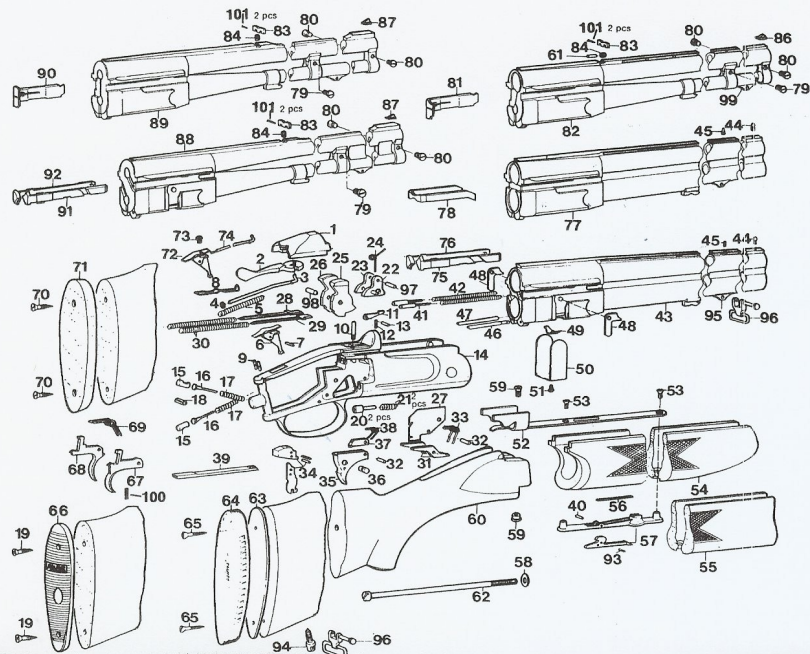
SERVICE AND REPAIR

If your Valmet gun should require service or repair, we suggest you contact your authorized Valmet dealer.

FINAL WARNING

Use factory made ammunition only for maximum safety as well as proper cleaning maintenance at all times.

Failure to do so could result in future alteration of the receiver specifications, which would prevent you from taking full advantage of Valmet's barrel interchangeability.



Part no.	Part name	Part no.	Part name	Part no.	Part name	
1	212230 Locking Bolt	36	202940 Selector Button	56	204690 Front Trigger	
2	202770 Top Snap	37	202920 Selector Cam	69	208120 Trigger Spring	
3	202790 Top Snap Plunger	38	202930 Selector Cam Spring	70	HP 0903 Screw	
4	202800 Top Snap Plunger Washer	39	208620 Cocking Slide	71	202370 Butt Plate, Curled Birch Wood	
5	202810 Top Snap Spring	40	JE 1530 Striker Pin	72	202821 Safety Button	
6	202820 Safety Button	41	204550 Ejector Spring Plunger	73	HC 0226 Screw	
7	206100 Safety Pin	42	204560 Ejector Spring	74	202791 Safety Spring	
8	202830 Safety Spring	43	208800 Barrels complete 12-28" M/F	75	208910 Extractor Right	
9	202840 Indicator		209090 Barrels complete 12-26" C/IC	76	208820 Extractor Left	
10	202780 Top Snap Pin		208770 Barrels complete 12-28" C/C Skeet	77	208510 Barrels complete 26" M/F	
11	201090 Top Slide Trip		209010 Barrels complete 12-26" IC/M		208680 Barrels complete 30" I.M.F. 3" cartridge chamber	
12	201101 Top Slide Trip Spring		208690 Barrels complete 12-30" I.M.F. Trap	78	208540 Extractor	
13	202100 Top Slide Trip Pin		208990 Barrels complete 12-30" M/F 3" cartridge chamber	79	212940 Screw	
14	212180 Frame, assembly Ø 2.0		209240 Barrels complete 20-26" C/IC	80	211820 Screw	
15	202850 Striker		209210 Barrels complete 20-26" IC/M	81	212240 Extractor	
16	201140 Firing Pin		209250 Barrels complete 20-28" M/F	82	213020 Barrels complete cal. 12 IC/7x65R	
17	201150 Firing Pin Spring	44	201810 Front Sight Bead	213030 Barrels complete cal. 12 IC/30-06	83	213040 Barrels complete cal. 12 IC/9.3x74
18	JE 9201 Striker Pin	45	201840 Rear Sight Bead	84	211320 Spring	
19	204420 Screw	46	204580 Ejector Operating Rod Right	85	211330 Crank Pin	
20	204591 Ejector Operating Pin	47	204600 Ejector Operating Rod Left	86	213090 Sight Bead	
21	251850 Ejector Operating Pin Spring	48	204630 Ejector Trip	87	212960 Sight Bead	
22	204671 Cocking Crank Right	49	204610 Ejector Trip Spring	88	213070 Barrels complete 2x(7x65R)E	
23	204672 Cocking Crank Left	50	204621 Covering Plate	89	213050 Barrels complete 2x.308	
24	204520 Cocking Slide Spride	51	206090 Covering Plate Screw	90	213060 Barrels complete 2x.30-06	
25	202862 Hammer Right	52	208580 Fore-end Iron	91	208810 Extractor, Right	
26	202863 Hammer Left	53	HE 4472 Fore-end Screw	92	208820 Extractor, Left	
27	202900 Support Plate	54	208570 Fore-end Wood	93	JE 9305 Spring Pin	
28	200933 Mainspring Plunger Left	55	212460 Fore-end Wood (model Vainio)	94	208440 Rear Swivel Bow Body	
29	200932 Mainspring Plunger Right	56	201710 Fore-end Snap Spring	95	208450 Front Swivel Bow Body	
30	202870 Mainspring	57	207580 Fore-end Snap assembly	96	208430 Swivel Bow	
31	202882 Sear	58	JD 0107 Stock Bolt Washer	97	206110 Cocking Crank Pin	
32	208120 Trigger Pin	59	208610 Fore-end Nut-Bolt	98	208130 Hammer Pin	
33	202890 Sear Spring	60	206090 Stock (Monte-Carlo)	99	211120 Front Swivel Bow Body	
34	200940 Inertia Block		209030 Stock (Standard)	100	213290 Trigger Adjusting Screw	
35	202910 Trigger		208400 Stock (Trap)	101	213280 Trigger Adjusting Screw	
			209020 Stock (Skeet)			
			61	212130 Snap Pin		
			62	209280 Screw		
			63	201820 Butt Plate Spacer		
			64	201850 Butt Plate		

 **SAKO-VALMET**

Tourula Works
P.O.Box 60
SF-40101 JYVÄSKYLÄ
Finland
Phone 358-41-693 211, telex 28228 valto sf

Printed in Finland by Kirjapaino Kari Ky 1987