

UNIVERSAL FIREARMS CORPORATION

AUTOWING AUTOMATIC SHOTGUN

Instruction for use and care

ASSEMBLY:

1. Retract the breech bolt until it is engaged by pulling rearward on the operating handle.
2. Remove the forearm by holding the forend wood to the rear with one hand while unscrewing the magazine cap with the other hand. Forend wood has spring pressure forward and should be released slowly.
3. Place the barrel guide ring on the magazine tube and push the barrel rearward so that the barrel extension slides back into the receiver.
4. With the barrel held in this position, replace the forend over the magazine tube and screw the magazine cap on. **Be certain that the cap is screwed completely down so that the rear end of the forearm is in firm contact with the front of the receiver.**

DISASSEMBLY:

1. **Make sure there are no shells in either the chamber or the magazine.**
2. Draw the breech bolt back to the locked open position.
3. Push the barrel back into the receiver so that spring tension on the forearm is relieved.
4. While maintaining the barrel in this position, unscrew the magazine cap and remove the forearm from the magazine tube.
5. **Do not suddenly release the pressure against the barrel. Allow the barrel to come forward slowly until the spring is no longer under tension.**
6. After the barrel has been removed from the gun, hold rearward pressure on the operating handle and push the action release button. Allow the breech block to come forward slowly until it has reached its at-rest position.
7. **CAUTION - Do not permit the breech block to fly closed when the barrel is not in the action. Damage to the action will result.**

ADJUSTMENT OF RECOIL ABSORBING MECHANISM (Friction Ring):

1. This mechanism is quite simple, yet must be given some attention.
2. There are two (2) settings. One for high brass and magnums, and one for target and light field loads.

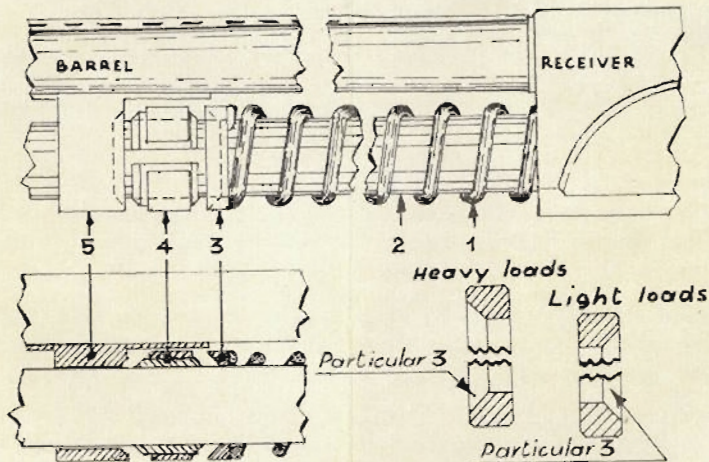


Fig. 1

FOR HEAVY LOADS:

1. All components are removed from the magazine tube.
2. The recoil spring is placed on the magazine tube first and is in direct contact with the receiver.
3. The friction ring is then placed over the magazine tube with its bevelled surface forward (the flat surface of this ring is in contact with the spring). See position A - fig. 1.
4. The bronze friction piece is then slipped on the magazine tube. When the barrel is assembled on the gun, the bevelled surface at the rear of the barrel ring fits over the bevelled surface of the bronze friction piece.

FOR LIGHT LOADS:

1. The only difference between the setting for light and heavy load is the change in the position of the small friction ring.
2. For light loads, turn the friction ring with its bevelled surface against the recoil spring as shown in position B - fig. 1.
3. Next, the bronze friction piece and the barrel are installed.
CAUTION: never fire gun with the bronze friction ring in any position other than directly behind the barrel guide. A VERY LIGHT film of oil should be kept on the magazine tube.

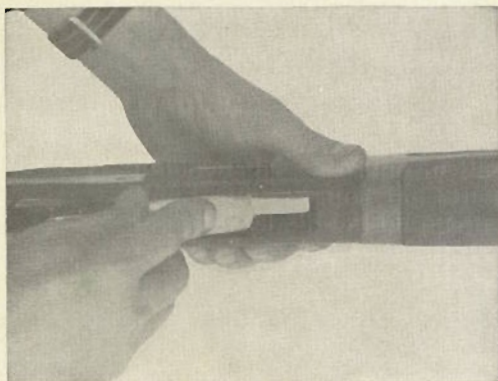


Fig. 2

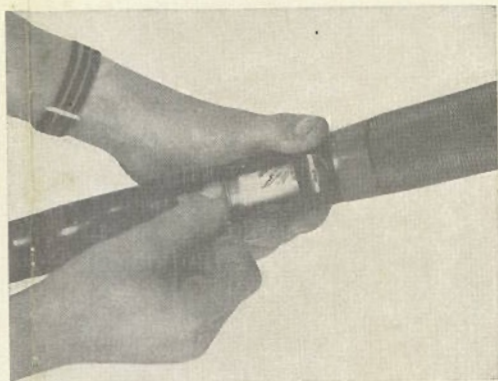


Fig. 3

LOADING:

1. First push safety to **safe position** (pushed to the right with **no red showing**).
2. Pull operating handle to the rear so that breech bolt is in lock-open position.
3. Drop shell into receiver, press latch button and shell will be loaded into the chamber.
4. Turn the gun so that the trigger guard is facing up.
5. Push carrier latch button while pushing loaded shells into the magazine. Fig. 2-3.
6. Except for pushing the safety to **off position** (to the left with red band showing) the gun is now ready to fire. **IMPORTANT: during all loading operations it strongly advisable that the gun be pointed in a safe direction and that the safety be kept in the ON position.**

PLEASE NOTE: the shells cannot be brought up manually from the magazine to the chamber. This takes place only when firing the shotgun.

UNLOADING:

1. Remove the cartridge in the chamber by retracting the operating handle so that the breech block remains in the open position. The shell will be ejected when the breech block is retracted. Press the latch button and close the bolt after the cartridge has been removed.

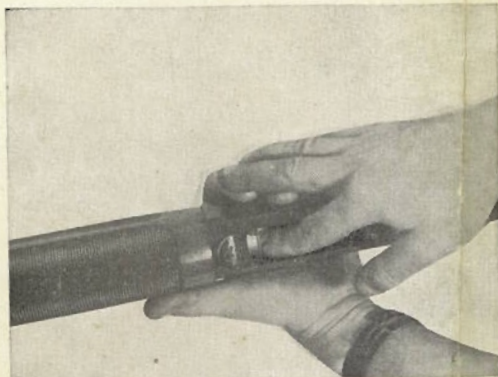


Fig. 4

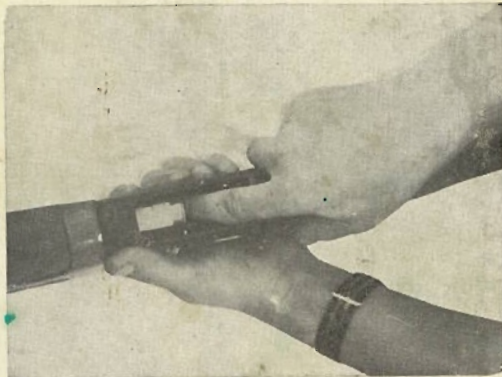


Fig. 5

2. Turn the gun to the loading position (trigger guard facing up as shown in the illustration, Fig. 4). Press the carrier latch and exercise a slight pressure with the index finger on the magazine latch placed on the inside left wall of the receiver. The shell will be pushed out by the magazine spring. Repeat this operation until the magazine is completely empty, Fig. 5.

PLEASE NOTE: This shotgun has been provided with a cross bolt safety located through the rear of the trigger guard. The safety should be in the **on** position (pushed to the right and the red band not visible) for all loading and unloading operations.

MAINTENANCE INSTRUCTION:

The five-shot automatic shotgun does not require a great amount of maintenance. The chrome-lined barrel and the anodized receiver require very little attention. It is best to keep a very light film of oil on the inside parts during the time the gun is not in use. A light coating of TSI-300 or WD-40 would be recommended. Excessive amounts of oil in the action tend only to collect dirt and cause malfunctioning of the gun. It is recommended that the gun be taken to a competent gunsmith for proper dismantling of the action when necessary.

U N I V E R S A L A U T O M A T I C M A G A Z I N E C U T - O F F

NOTE:

The U N I V E R S A L Auto-loading Shotgun is equipped with an Automatic Magazine Cut-off, a feature found only in guns selling for much more. A round is not chambered by manually operating the breech bolt, neither is the magazine unloaded by working each shell through the action. This is a foolproof system which is faster and safer when one wants to switch loads in the chamber, or clear the chamber of the shotgun.