



*Aldo Uberti & C.*

Via G. Carducci, 41  
Ponte Zanano, (Brescia) - ITALY

# Instruction Manual

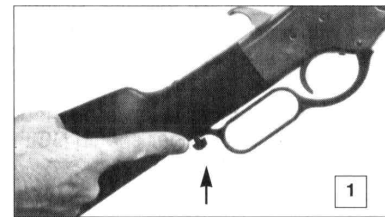
## HENRY MODEL

N.	COD. NO.	Q.ty	PART
1	238001	1	FRAME
2	A200002	1	HAMMER
3	238003	1	CARBINE BARREL 22 1/4 Cal. 44/40
7	238007	1	CARRIER BLOCK
10	200010	1	TRIGGER
15	238015	1	SIGHT
19	200019	1	TRIGGER SPRING
20	200020	1	MAIN SPRING
36	200036	1	MAIN SPRING SCREW
55	A238055	1	REAR
57	238057	1	BUTT STOCK
58	238058	1	BUTT PLATE
62	238062	4	BUTT PLATE SCREW
63	200063	1	TANG SCREW
67	200067	1	FIRING PIN EXTENSION
72	200072	1	CAM LEVER
73	238073	1	RIGHT SIDE PLATE
74	238074	1	LEFT SIDE PLATE
79	230079	1	EXTRACTOR
80	238080	1	FRONT BAND
83	220083	1	RIGHT REAR LINK
84	220084	1	LEFT REAR LINK
85	220085	1	RIGHT FRONT LINK
86	220086	1	LEFT FRONT LINK
89	200089	1	LEVER
90	200090	1	LIFTER ARM
92	200092	1	RIGHT LEVER SPRING
93	200093	1	LEFT LEVER SPRING
95	070016	1	FIRING PIN SPRING
96	232096	1	MAGAZINE SPRING
97	230097	1	BREECH BLOCK
98	220098	1	FIRING PIN
99	200099	1	TRIGGER PIN
100	200100	1	HAMMER PIN SCREW
101	200101	1	LEVER SCREW
104	200104	1	FIRING PIN STOP
105	200105	2	REAR LINK PIN

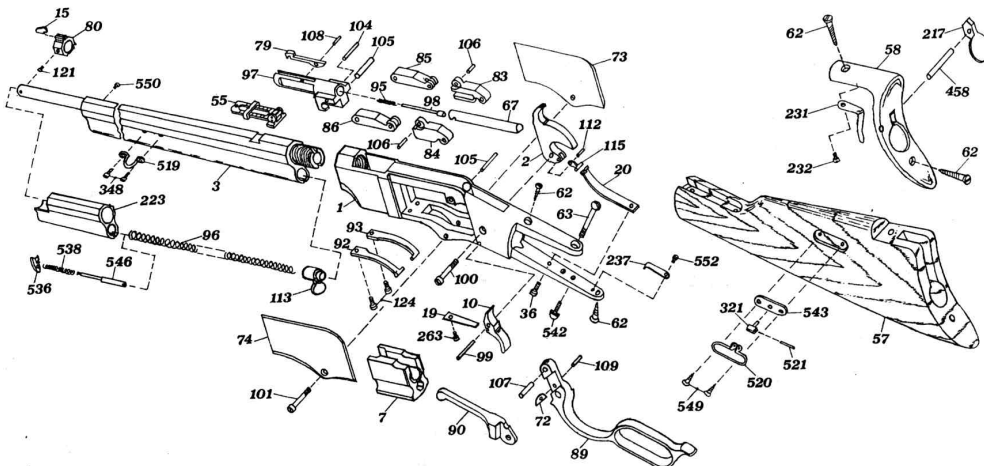
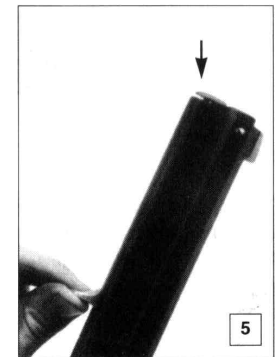
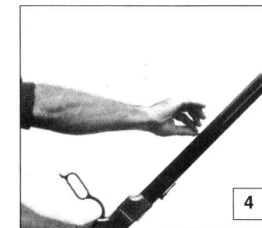
N.	COD. NO.	Q.ty	PART
106	200106	2	LINK PIN
107	200107	1	LEVER PINK
108	230108	1	EXTRACTOR PIN
109	200109	1	CAM LEVER PIN
112	200112	1	HAMMER LINK PIN
113	238113	1	MAGAZINE FOLLOWER
115	200115	1	HAMMER LINK
121	238121	1	BAND SCREW
124	200124	2	LEVER SPRING SCREW
217	238217	1	BUTT PLATE GATE
223	238223	1	SLEEVE
231	238231	1	BUTT PLATE GATE SPRING
232	238232	1	BUTT PLATE GATE SPRING SCREW
237	200237	1	LEVER HOOK SPRING
263	200263	1	TRIGGER SPRING SCREW
458	238458	1	BUTT PLATE GATE PIN
536	238536	1	SLEEVE LATCH
538	238538	1	SLEEVE LATCH ROD SPRING
542	200542	1	HOOK LEVER
546	238546	1	SLEEVE LATCH ROD
550	238550	1	MAGAZINE FOLLOWER SCREW
552	000035	1	HOOK LEVER SPRING SCREW
3	239003	1	<b>ALTERNATIVES</b>
3	286003	1	RIFLE BARREL 24 1/4 Cal. 44/40
3	287003	1	TRAPPER BARREL 16" 1/2 44/40
3	288003	1	TRAPPER BARREL 18" 1/2 44/40
96	230096	1	RIFLE BARREL .45Colt.
321	238321	1	TRAPPER MAGAZINE SPRING
348	238348	2	REAR SWIVEL PIVOT
519	238519	1	FRONT SWIVEL SCREW
520	238520	1	FRONT SWIVEL
521	238521	1	REAR SWIVEL PIN
543	238543	1	REAR SWIVEL BASE
549	238549	2	REAR SWIVEL BASE SCREW

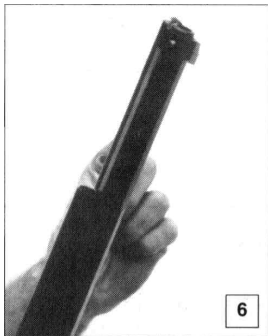
### TO LOAD THE FIREARM

(1) Turn the lever locking latch to the release position. Releasing the latch should allow the lever to go down approximately 1/2". Do not push the loading lever forward. (Photos 1-2)



(2) First, make sure the loading lever is fully forward. (Photo 3). Then load the tubular magazine by pushing the brass magazine follower fully forward (Photo 4) until the engagement indicator just below the muzzle rises approximately 1/16th of an inch. (See photo 5).

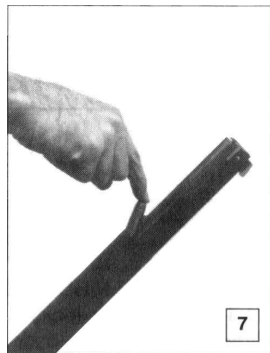




With the follower fully forward, the forward section of the barrel will rotate clockwise. (Photo 6).

If the barrel sleeve does not rotate, then the follower is not fully forward. Once the barrel sleeve has been rotated, insert the cartridges, rim first. (Photo 7). Hold the rifle pointed away from

your face and at an angle so that the cartridges slide slowly down the magazine. Capacity is 5 on the 16" Trapper, 6 on the 18" Trapper, 8 on the 22" Carbine and 10 on the 24" 1/4 Rifle.



(3) Place your hand on the sleeve with thumb grasping the brass follower. Rotate the barrel sleeve back into the closed position and with thumb slowly allow follower to return downwards. DO NOT allow the follower to slam down onto loaded cartridges, and DO NOT place any part of your hand over the muzzle while loading.

(4) When you are ready to actually fire the firearm, the loading lever is pushed forward as far as it will go and is then pulled straight back. Your finger should NOT TOUCH THE TRIGGER while manipulating the loading lever. (Photo 8).

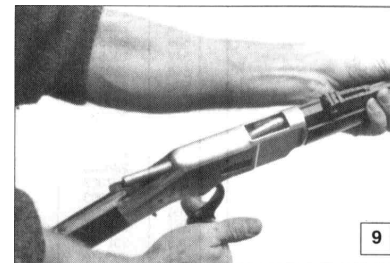


The rifle will now be fully cocked and will fire when the trigger is pulled. If the lever does not go forward, release the loading lever latch by turning the small knob perpendicular to the rifle.

(5) After you have fired the first shot, the next cartridge is loaded by repeating step 4.

## UNLOADING THE FIREARM

(6) With the firearm pointed in a safe direction, place your fingers through the rear portion of the loading lever. Be sure your first and second fingers are inside the lever loop. DO NOT TOUCH THE TRIGGER, depressing or touching the trigger, even when the lever is fully open or partially closed, may cause the gun to accidentally discharge and cause serious injury or death to you or anyone in the line of fire of the Rifle. Then push the lever straight backwards and then pull the loading lever forward again. The cartridge that was in the chamber should now be automatically ejected. (Photo 9)



(7) Repeat step 6 until all cartridges have been ejected from the firearm. After all cartridges have been ejected, cycle the action four or five more times as described in step 6 as an added precaution to assure that all rounds were ejected.

(8) After step 7, move the loading lever to the forward position while visually inspecting both the chamber and the carrier block, to confirm that no cartridges are still in the firearm.

(9) Pull the loading lever to the rear and, with your thumb on the hammer, pull the trigger; with your thumb allow the hammer to slowly lower.

### SPECIAL SAFETY INSTRUCTIONS

- 1) Uberti lever action rifles should never be carried with a cartridge in the chamber.
- 2) Carrying this style of rifle with a cartridge in the chamber can result in an accidental discharge if the firearm is accidentally dropped or if the hammer struck.
- 3) Due to the fact that in a tubular magazine rifle the cartridges are stacked in front of each other, only factory ammunition should be used NEVER use pointed nose bullets in this style firearm.
- 4) We recommend against using old ammunition in these rifles as primers, powder and the brass cartridge cases can deteriorate and cause damage to the rifle or injury to the shooter or others.
- 5) NEVER use .44/40 ammunition marked "high speed" or "high velocity" cartridges, as it is designed for later model firearms.
- 6) NEVER use reloaded ammunition.