

## SAFETY FEATURES

Safety devices, if used properly, can help minimize the danger of accidental firing.

NOTE: Read carefully your instruction manual on how to operate the safety devices on your gun. Safety devices on guns are extras and are not a substitute for your proper and safe handling practices.

### AMMUNITION

- Use only commercially manufactured ammunition which pressure cannot be higher than the ones stated by S.A.A.M.I. or C.I.P.
- Your gun has been designed for ammunition of a specific caliber - do not alter the barrel, chamber, caliber for which you gun was designed. Be sure you never mix ammunition.
- Use only ammunition specifically recommended for your firearm. (Proper Ammunition specified on barrel and cylinder).
- The use of reloaded Ammunition voids the warranty.

*OUR COMPANY DECLINES RESPONSIBILITY FOR ALL DAMAGES DERIVED BY  
USAGE OF RELOADED AMMUNITION*

### WARRANTY NOTICE!!

**CHARCOAL BLUE FINISH:** Derives its name from the high-temperature fire blueing process involved in attaining the deep royal blue color. Charcoal Blue is **more delicate than standard blue:** the gun must be constantly oiled and with use will become a desirable smoke gray "patina" finish as on an antique gun.

**NICKELPLATED FINISH:** This nickel plated finish is a superficial electrolytic process: these nickel plated firearms, after firing, the muzzle crown of the barrel and the cylinder may begin to show wear on close inspection. This is due to usage and is unavoidable.



*A. Uberti* S.p.A.

25063 Gardone V.T. (Brescia) Italy - Via Artigiani, 1  
Phone +39.030.83 41800 - Telefax +39.030.83 41 801  
E-mail: [info@ubertireplicas.it](mailto:info@ubertireplicas.it)  
[www.ubertireplicas.com](http://www.ubertireplicas.com)



*A. Uberti* S.p.A.

Via Artigiani, 1 - Gardone V.T (Brescia) - ITALY

## Instruction Manual

**BEFORE REMOVING THE FIREARM FROM THIS PACKAGE,  
READ & UNDERSTAND THE PRECAUTIONS IN THE  
INSTRUCTIONS MANUAL**

## TOP BREAK S.A. REVOLVER

### SPECIAL SAFETY INSTRUCTIONS

- 1) DO NOT transport your Uberti revolver with a cartridge in the chamber. Failure to observe this rule could result in an accidental discharge if the firearm is dropped or knocked.
- 2) We advise that you DO NOT use old cartridges in these firearms because brass powder, after a certain period of time, can deteriorate and damage your firearm which can be dangerous also for yourself.
- 3) NEVER use cartridges marked "High Speed" or "High Velocity".
- 4) Uberti assumes no liability for incidents occurring through the use of reloaded ammunition. Use **ONLY COMMERCIALY** loaded cartridges that have been loaded in accordance with SAAMI-C.I.R standards.

### IMPORTANT

The old-timers used to say that the safest way to carry a single-action revolver was to load only five chambers and let the hammer rest, in the safety position, on the empty sixth chamber. That's good advice even today. It still takes proper care in handling and use by you, its owner.

# SAFETY MANUAL

**This Manual Should Always  
Accompany this Firearm  
and Be Transferred With It Upon  
Change of Ownership**



## SAFETY INSTRUCTIONS

Whether you are an experienced safe shooter and are familiar with these safety instruction procedures, or have some or no familiarity with handling a gun, it is imperative that you read carefully and thoroughly this entire instruction manual and follow the safety instructions to ensure you are familiar with the proper and safe use of this firearm to prevent personal injury, death, or property damage.

### CAUTIONS:

- Before shooting, learn this gun's mechanical and handling characteristics; read and be thoroughly familiar with these safety instructions. If you do not fully understand any of the instructions in this manual, consult a competent firearms instructor through your local gun club or the NRA in Washington or you can write to us at A. Uberti S.p.A.
- Always point the gun in a safe direction, and handle it as though it were loaded. This is especially important when loading and unloading the gun, and when handing it to someone else. Never take someone's word that it is unloaded. Always check it yourself with your fingers off the trigger and the gun pointed in a safe direction.
- Always keep the safety on until you are ready to safely shoot at an intended target (see safety features). Note: Safety devices on guns are extras and are not a substitute for your proper and safe handling practices.
- While at a shooting range, always carry the gun unloaded and open until preparing to shoot. Keep it pointing in a safe direction when loading, shooting and unloading.
- Never drink alcoholic beverages or take any drugs before or during shooting, as this not only constitutes criminal disregard for your safety and that of others, but will seriously impair your judgment and vision. Moreover, never use a gun while you are taking medication unless you have checked with your doctor to ensure your fitness to handle the gun safely.
- Always wear and encourage others near you to wear proper ear protection when shooting, especially on a range since the noise from your gun, and other guns close to you, could result in a humming or ringing sound in an exposed ear for some time after firing. Repeated exposure to shooting noise could result in permanent hearing loss.
- Always wear protective shooting glasses to protect your eyes from injury by gun powder, gas, lubricant, dirt or metallic particles, carbon residue, sparks or other debris.
- Always check the barrel bore, chamber and action to ensure they are perfectly clean and clear of obstructions. Clean a fouled gun immediately for correct and safe function.
- Do not smoke while handling, loading or shooting any ammunition, especially black powder. Keep black powder in a closed container at all times, reclosing the container after each and every use.
- Always use only good condition, undamaged, clean, dry, original high quality, commercially manufactured ammunition of a reputable company which is appropriate for the gun's caliber. Ammunition which is too small can fall forward and become a barrel obstruction. Manufacturers design guns and ammunition within exacting engineering safety limits. Since handloads are often outside those limits, they are not to be used.
- Always use an individual charge from a powder measure when loading a muzzleloading gun, never charging directly from a powder flask.
- When selecting a place to shoot, always be absolutely sure of your target and the area behind it before you touch the trigger, making sure there is an adequate backstop which will stop and contain bullets. A bullet can travel through or past your target up to 1 1/1 miles. If you have any

## PRECAUTIONS

**Read and understand all the following precautions before removing this firearm from the package.**

The United States I.R.S., B.A.T.F. and treasury department classifies this product as a firearm or dangerous weapon; therefore, it is potentially lethal.

**WARNING:** Careless and improper handling of this gun could result in unintended discharge causing injury, death or property damage. Safety must be the first and constant consideration when handling a firearm and ammunition.

**CAUTION:** Prior to removing this gun from its packaging, and prior to loading and shooting, carefully and thoroughly read this entire instruction manual which advises on the gun's proper functioning and handling. If you are unsure of anything, or have little experience or are unfamiliar with firearms, contact your local gun club, NRA approved instructor, or directly contact the National Rifle Association, Washington, D.C. 20036. Firearm safety is your responsibility and your safety and that of your family and others depend on your responsible, safe use.

## NOTICE - DISCLAIMER OF LIABILITY

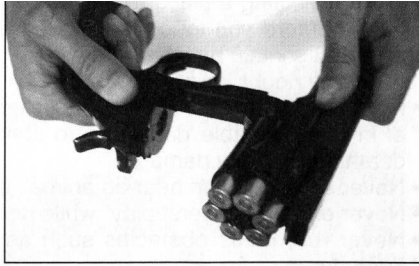
A. Uberti S.p.A. shall not be responsible for product malfunction or for physical injury, death, or property damage from the gun's intentional or accidental discharge, its criminal or negligent use, improper or careless handling, unauthorized modifications, corrosion or other failure to maintain, use of defective, improper, hand-loader or reloaded ammunition, or other than original, good condition, high quality, commercially manufactured ammunition, or from its use for purposes or subjection to treatments for which it was not designed. A. Uberti S.p.A. will not honor claims made by the second or subsequent owners of the firearm. While this firearm was tested, carefully inspected, and packaged before it left the factory, A. Uberti S.p.A. cannot thereafter control product handling. Please be sure to examine this firearm carefully when purchased to ensure it is unloaded and undamaged. Your gun dealer will assist you in making this examination and answer any further questions in this regard.

## AMMUNITION

**AMMUNITION WARNING:** Since your gun has been designed for specific caliber ammunition, use only commercially manufactured ammunition which pressure cannot be higher than the ones stated by SAAMI or C.I.P. standards. Factory ammunitions must be in excellent condition, of original high quality, and specifically recommended for the gun and nothing else. Never use reloaded or hand-loaded ammunitions. Never carry the gun with a round in the chamber until ready to shoot.

## **UNLOADING**

Point the gun in a safe direction. Draw the hammer back to the first cock position (Drawing "A"). Turn the gun so the cylinder is facing downward, release the Stud Latch and completely open the gun. At this point all the cartridges will fall out temporarily towards the ground.



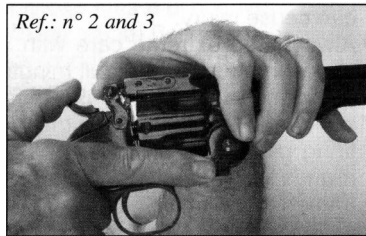
## **FIRING POSITION (FULL COCK) (Drawing "B")**

Pull the hammer backward in firing position (full cock). Make sure it clicks into this rearmost position. Your revolver is now ready to fire.

Never attempt to fire your revolver in any position except the full cock position. Attempting to pull the trigger in the safety position will strain the mechanism and make it unsafe. (It might even break if you are strong enough). If your revolver is in the full cock position and you change your mind and don't want to shoot, carefully follow these instructions:

1. Point the revolver in a safe direction.
2. Take your trigger finger out of the trigger guard and put this finger on the side of the frame.
3. Release the stud latch and rotate the barrel fully open.
4. Remove all cartridges and empty casings from your firearm.
5. Put your trigger finger on the trigger and your thumb on the hammer.
6. Pull the trigger backward and hold it while lowering the hammer. After the hammer has passed the full cock position (firing position) release the trigger and continue to lower the hammer until it clicks into the first cock position (Drawing "A").

Before opening and closing your firearm **MAKE SURE THE HAMMER IS IN THE SAFETY POSITION** (See drawing "A"). With the hammer in this position, the safety mechanism is activated. Make sure your revolver is always in the safety position when transporting or when you are not actually firing. You must learn this procedure with an unloaded firearm until you feel confident and are familiar with the handling. Only when you feel really confident should you think about using live ammunition.



## **CLEANING**

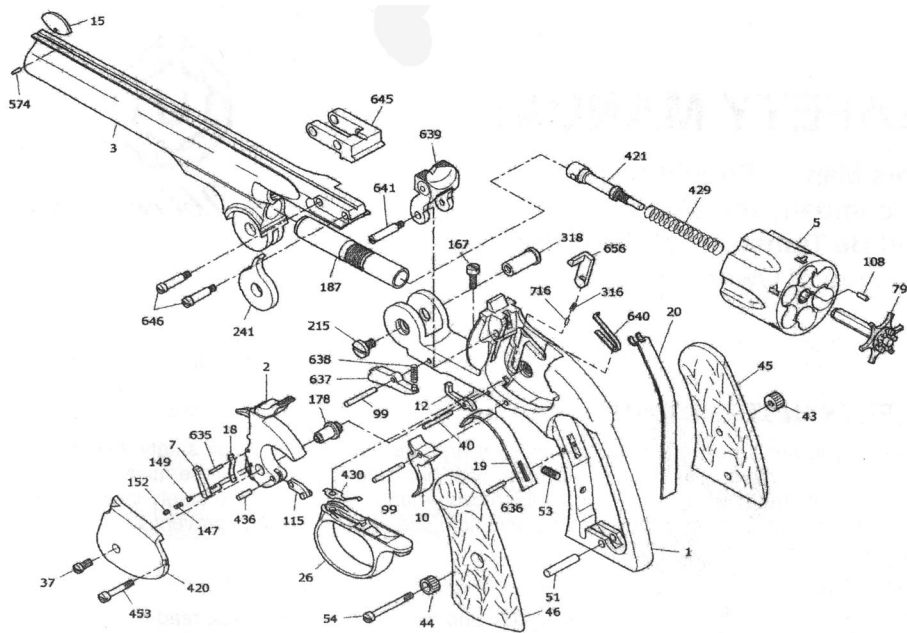
Check first to make sure your revolver is empty. Pull the hammer rearward into first cock position (Drawing "A"), release the stud latch and open the gun for cleaning. Use a wood, aluminium, or brass cleaning rod (not steel), a brass brush and patches appropriate to the calibre of your gun. Use a good quality cleaning solution to scrub the bore and each chamber. While scrubbing the bore, always brush all the way through the bore; never try to reverse directions while the brush is actually in the barrel or chamber. After scrubbing, run clean patches through the bore and chambers until they come out clean. Then lightly oil the entire revolver. You will find that over the years, the oil will give a lovely colour to your wooden grip and will develop and retain a soft patina glow. Use your revolver carefully and safely. Help us to help you keep and protect your right to gun ownership.

## **CAUTION**

Remember, when you full cock your revolver to shoot it again, you rotate the cylinder; then you decide not to fire and decock the pistol. This round is still live and will rotate back towards the firing position with each cocking. Do not forget about this round. If you fired rounds prior to the decocking operation and commence firing again, the hammer will fall on one or more empty cylinders and still will fall on a live round. Be careful and attentive to this live round. Always keep your revolver pointed in a safe direction.

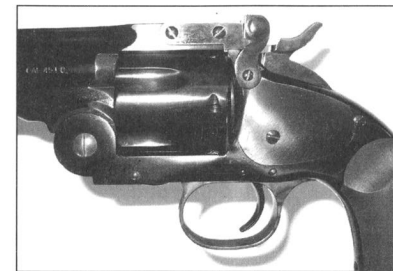
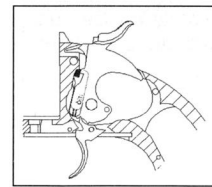
doubt, do not shoot.

- Never shoot at flat or hard surfaces such as rock, or at water. A bullet may ricochet and travel in unpredictable directions to strike you, or an object you cannot see, causing injury, death, or property damage.
- Never shoot the gun near an animal, as the animal could be startled and create an accident.
- Never engage in "horseplay" while holding your gun.
- Never run, cross obstacles such as streams or ditches, or climb a fence or tree with a loaded gun.
- Never follow a companion with your gun loaded.
- Place the hammer forward only when you are ready to shoot. Never place or permit the hammer to remain in the half-cock notch as this is not a safe carrying position. You might end up accidentally perching the hammer on the lip of the half cock notch, which is extremely dangerous. The hammer in this condition could fall forward and discharge the gun, causing injury, death, or property damage.
- Do not put your finger inside the trigger guard until you have aimed the gun at the intended target and are imminently ready to safely shoot.
- Always be aware of other people around you. Keep spectators or others to your rear. Keep hands and face clear and keep others clear of the ejection port as ejected spent cartridges can cause injury.
- Always use extreme care with a misfire or failure to fire. Keep the gun pointed in a safe direction and wait one full minute. This is because if hangfire or slow ignition has occurred, the round will still fire. If the round fails to fire after waiting, remove the magazine, eject the round and examine the primer. Immediately refer to a competent gunsmith if you notice the firing pin indent on the primer is light, off-center, or does not exist. Dispose of misfired rounds according to the ammunition manufacturer's instructions.
- Immediately cease shooting if your gun fails to properly function. Never force a jammed action, which can cause a round to explode and cause personal injury, death, or damage to your gun or other property.
- Never leave a gun, especially a loaded gun, unattended as someone, especially a child, could accidentally shoot it causing injury, death, or property damage.
- Never keep a loaded gun in a vehicle, or carry it loaded.
- Make sure your gun is not loaded before cleaning, storing, traveling, laying it down, or handing it to another person.
- Never store the gun loaded. Always store the gun and ammunition separately in locked gun safes, away from children's reach and sight, minimizing the risk that the gun and ammunition could be easily loaded and fired.
- Black powder and percussion caps must be stored in separate locations, preferably in their original containers.
- Discharging firearms in poorly ventilated areas, cleaning firearms, or handling ammunition may result in exposure to lead and other substances known to cause birth defects, reproductive harm, and other serious physical injury. Have adequate ventilation at all times. Wash hands thoroughly after exposure.

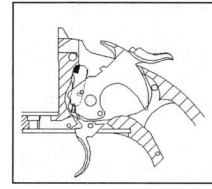


N.	Q.ty	Description	N.	Q.ty	Description
1	1	Frame Assembly	149	1	Hammer Safety Pin
2	1	Hammer Assembly	152	1	Hammer Safety Stop Screw
3	1	Barrel Assembly	167	1	Triggerguard Screw
5	1	Cylinder Assembly	178	1	Hammer Pin
7	1	Hand	187	1	Base Pin Bushing
10	1	Trigger	215	1	Hinge Pin Screw
12	1	Bolt	241	1	Ejector Cam
15	1	Sight	316	1	Safety Spring
18	1	Hand Spring	318	1	Hinge Pin
19	1	Trigger Spring	420	1	Side Plate
20	1	Main Spring	421	1	Ejector Rod
26	1	Triggerguard	429	1	Ejector Spring
37	1	Hammer Screw	430	1	Bolt Spring
40	1	Bolt Screw	436	1	Stirrup Pin
43	1	Right Grip Nut	453	1	Side Plate Screw
44	1	Left Grip Nut	574	1	Sight Pin
45	1	Right Grip	635	1	Hand Spring Pin
46	1	Left Grip	637	1	Ejector Lever
51	1	Grip Pin	638	1	Ejector Lever Spring
53	1	Mainspring Screw	639	1	Stud Latch
54	1	Grip Screw	640	1	Stud Latch Spring
79	1	Ejector .45	641	1	Stud Latch Screw
99	2	Trigger Pin	645	1	Barrel Block
108	1	Extractor Guide Pin	646	2	Barrel Block Screw
115	1	Stirrup	656	1	Safety Block
147	1	Hammer Safety Spring	716	1	Safety Spring Pin

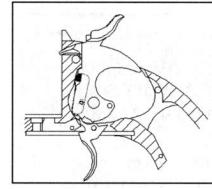
The term “single action” means that the hammer of your revolver must be manually drawn fully backward, or “cocked”, before firing each shot. In the process of cocking your revolver, you should note that there are three separate hammer positions, each one having its purpose:



**A. “SAFETY”,  
“TRANSPORT”,  
“LOADING”,  
“UNLOADING”**



**B. “FIRING”**



**C. “AFTER FIRING”**

**SAFETY**

These guns have a hammer block safety. To activate the hammer safety block, pull the hammer backward until you hear the first click. Lower the hammer into the safety position. With the hammer in this position, the safety mechanism is activated. This patented device places a steel insert between the hammer and the frame and is designed to prevent the gun from firing accidentally. When the gun is not being used, always use your hammer block safety. (See drawing “A”)

**LOADING**

Keeping your finger out of the trigger guard and off the trigger, draw the hammer back to the first cock position which makes the cylinder free to rotate. Then, open the revolver as far as it will open until the ejector returns to its normal position in the cylinder. Make certain you have the exact calibre cartridges matching the exact calibre of your revolver. Then load one cartridge in each chamber. Before closing your revolver, make sure that the hammer is in first cock position. If the hammer is in full cock position (firing position) the firearm will not close. Do not insist on closing because the hand is not in its correct position. Be careful because you could break the hand.

Again you should practice this loading function without any cartridges until you are feel comfortable. Then, and only then, are you and your revolver ready for use.

