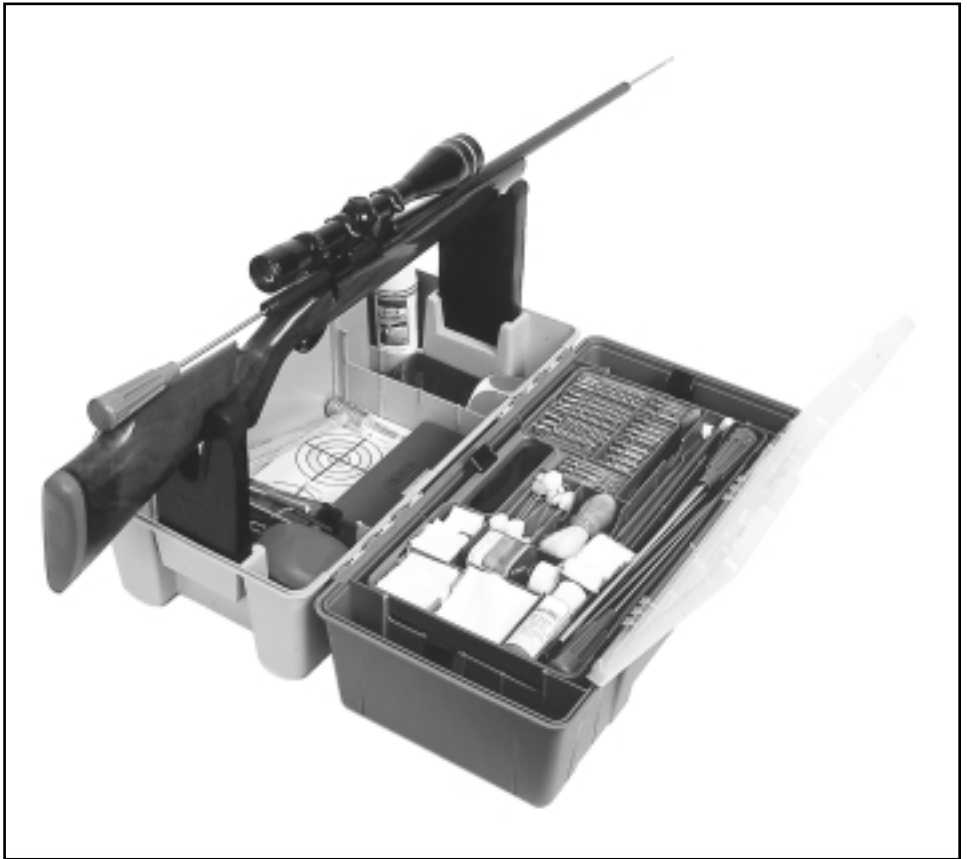


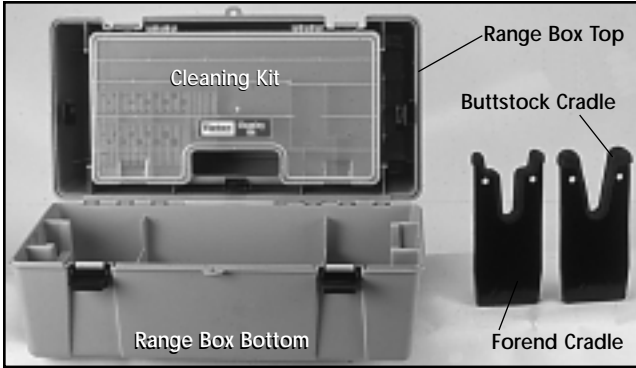
TiptonTM

Gun Cleaning Supplies

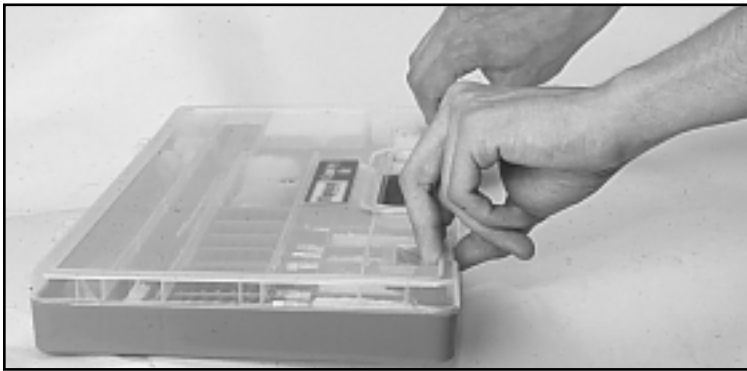
Range Box



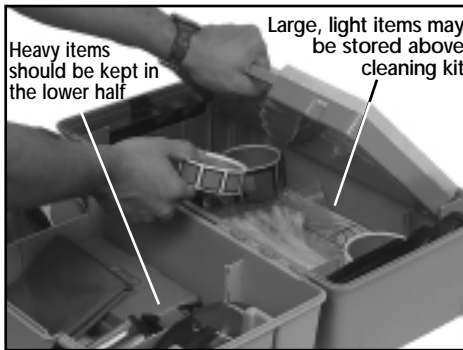
Instructions



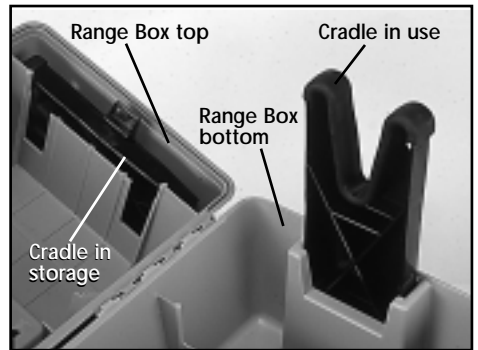
Picture 1



Picture 2



Picture 3



Picture 4

Thank you for purchasing the Tipton™ Range Box. It is designed with the shooter in mind: tough, portable, versatile and convenient. You will find it an excellent storage box for your cleaning accessories and essential small shooting/ maintenance items. Please read the following information completely prior to use.

Important Information

- Remember, when cleaning or handling firearms, always make sure your gun is unloaded.
- This product is not recommended as a secure storage area for firearms.
- Keep cleaning chemicals out of the reach of children. Secure the box by locking with a padlock (not furnished).
- The maximum recommended capacity of this box is 40 lbs.
- Avoid storing the box in direct sunlight and excessive heat.
- The cradles are designed to hold your firearm during cleaning and maintenance, not to be used as a shooting platform.

INSTRUCTIONS

Cleaning Kit:

1. The cleaning kit is stored in the top half of the Range Box (picture 1). To remove the kit from the box, depress the black locking latch by the kit handle and lift out (picture 3).
2. To open the cleaning kit, depress the pinch latches on either side of the kit handle and lift upward (picture 2). (Note: the cleaning kit can be opened while locked into the Range Box if desired). When closing the kit, make sure the pinch latches fully engage to avoid spilling the contents.
3. To replace the cleaning kit, slide it back into the top of the Range Box so the tabs on the back of the cleaning kit fit into the locking slots in the Range Box top (picture 3). Push the kit down so the black locking latch in the Range Box top snaps over the cleaning kit handle.

Cradles:

1. The forend and buttstock cradles (picture 1) are stored in compartments on either side of the cleaning kit in the Range Box top (picture 4). To remove cradles, depress the black locking latch and lift cradle from storage area.
2. To use cradles for gun cleaning or maintenance, insert them, flat side outward, into the cradle holders in the bottom half of the Range Box (picture 4).
3. When finished with the cradles, depress the black locking latch and insert cradle with the padded area away from the hinge.

Limited Warranty

Every Tipton product is warranted to be free of defects in materials and workmanship for a period of one (1) year from the date of original purchase. Tipton will, at its option, repair or replace without charge, except for transportation costs, parts that fail under normal use and service when operated and maintained in accordance with our Instructions. This warranty does not apply to normal wear or to items whose life is dependent upon their use and care. This warranty is in lieu of all other warranties, expressed or implied and releases Tipton, its affiliates, and its vendors from all other obligations and liabilities.

5885 W Van Horn Tavern Rd. • Columbia, MO 65203

Visit our web site at www.tiptonshooting.com

A **Battenfeld** Product