

Stevens®

The Definition of Value

Safe ownership is your responsibility. Please thoroughly read and understand this manual before loading your firearm.

Keep firearms and ammunition away from children. Lock unloaded firearms and ammunition securely in separate locations.

This manual should always accompany your firearm and be transferred with it upon change of ownership. This is your responsibility and may protect you from future liability.

Savage Arms, Inc.
100 Springdale Road
Westfield, MA 01085

INSTRUCTION MANUAL

BOLT ACTION CENTERFIRE

MODEL 200

IMPORTANT! DO NOT ATTEMPT TO LOAD AND SHOOT YOUR RIFLE UNTIL YOU HAVE THOROUGHLY READ THIS INSTRUCTION MANUAL AND ARE FULLY FAMILIAR WITH ITS CONTENTS

For more information, please visit our web site at www.savagearms.com

Congratulations on owning a Stevens sporting firearm. You are now part of the Savage Sports Corporation family of quality firearms, which includes Savage Arms, Inc., Savage Arms (Canada), and Fox. With reasonable care, your firearm should deliver years of reliable service and perform to our "definition of value".

For your convenience, this **INSTRUCTION MANUAL** has been divided into 6 sections:

SECTION 1: 10 Commandments of Shooting Safety

SECTION 2: Operating Instructions

SECTION 3: Parts List And Diagram

SECTION 4: Ammunition Bullet Weights And Magazine Capacities

SECTION 5: Scope Rings And Bases

SECTION 6: Statement Of Limited Warranty

SECTION 1

10 COMMANDMENTS OF SHOOTING SAFETY

FOR MORE INFORMATION, PLEASE VISIT OUR WEB SITE AT:
WWW.SAVAGEARMS.COM

(The following excerpts are from SAAMI bulletin #081 1MM 7/97 BP. The entire booklet can be obtained by calling: NATIONAL SHOOTING SPORTS FOUNDATION, 11 MILE HILL ROAD, NEWINGTON, CT 06470; 203-426-4358)

FIREARMS SAFETY DEPENDS ON YOU

From the time you pick up a firearm, you become part of a system over which you have complete control. You are the only part of the system that can make a gun safe – or unsafe.

You can help meet this responsibility by enrolling in hunter safety or shooter safety courses, if you have not already done so. You must constantly stress safety when handling firearms, especially to children and non-shooters. Develop safe shooting habits and remember, firearms safety is up to you. Make no mistake about it.

ALCOHOL, DRUGS AND GUNS DON'T MIX

1. ALWAYS KEEP THE MUZZLE POINTED IN A SAFE DIRECTION

This is the most basic safety rule. If everyone handled a firearm so carefully that the muzzle never pointed at something they didn't intend to shoot, there would be virtually no firearm accidents. It's as simple as that, and it's up to you.

Never point your gun at anything you do not intend to shoot. A safe direction means a direction in which a bullet can not possibly strike anyone, taking into account possible ricochets and the fact that bullets can penetrate walls and ceilings. Even when "dry firing" with an unloaded gun, you should never point the gun at an unintended target.

This is your responsibility, and only you can control it.

2. FIREARMS SHOULD BE UNLOADED WHEN NOT ACTUALLY IN USE

Firearms should be loaded only when you are in the field or on the target range or shooting area, ready to shoot. When not in use, firearms and ammunition should be secured in a safe place, separate from each other. It is your responsibility to prevent children and inexperienced adults from gaining access to firearms or ammunition. A loaded gun has no place in or near a vehicle or building.

Whenever you handle a firearm or hand it to someone, always open the action immediately, and visually check the chamber, receiver and magazine to be certain they do not contain any ammunition. Never assume a gun is unloaded – check for yourself! While in the field, there will be times when common sense and the basic rules of firearms safety will require you to unload your gun for maximum safety. When in doubt, unload your gun!

3. DON'T RELY ON YOUR GUN'S "SAFETY"

Treat every gun as though it can fire at any time, regardless of pressure on the trigger. The "safety" on any gun is a mechanical device, which, like any such device, can become inoperable at the worst possible time. The safety serves as a supplement to proper gun handling but cannot possibly serve as a substitute for common sense.

Never touch the trigger on a firearm until you

actually intend to shoot.

Your firearm is a precision instrument. Regardless of the position of the safety, any bump strong enough to actuate the firing mechanism of a gun can cause it to fire. The only time you can be absolutely certain that a gun cannot fire is when the action is open and it is completely empty. You and the safe gun handling procedures you have learned are your gun's primary safeties.

4. BE SURE OF YOUR TARGET AND WHAT'S BEYOND IT

No one can call a bullet back. Don't shoot unless you know exactly what your bullet is going to strike. Be sure that your bullet will not injure anyone or anything beyond your target. You should keep in mind how far a bullet will travel if it misses your intended target or ricochets in another direction.

Be aware that even a .22 short bullet can travel over 1½ miles and a high velocity cartridge, such as a 30-06, can project a bullet more than 3 miles. Shotgun pellets can travel 500 yards, and shotgun slugs have a range of over a half-mile.

5. USE CORRECT AMMUNITION

You must assume the serious responsibility of using only the correct ammunition for your firearm. Read and heed all warnings, including those that appear in the gun's instruction manual and on the ammunition boxes. Using improper or incorrect

ammunition can destroy a gun and cause serious personal injury. It only takes one cartridge of improper caliber or gauge to wreck your gun, and only a second to check each one as you load it. Be absolutely certain that the ammunition you are using matches the specifications that are contained within the gun's instruction manual and the manufacturer's markings on the firearm barrel.

Hand loaded or reloaded ammunition deviating from pressures generated by factory loads or from competent recommendations specified in reputable hand loading manuals can be dangerous, and can cause severe damage to guns and serious injury to the shooter.

Ammunition that has become very wet or has been submerged in water should be discarded in a safe manner. Do not spray oil or solvents on ammunition or place ammunition in excessively lubricated firearms.

Form the habit of examining every cartridge you put in your gun. Never use damaged, old or questionable ammunition – the money you save is not worth the risk of possible injury or a ruined gun.

WARNING

DISCHARGING FIREARMS IN POORLY VENTILATED AREAS, CLEANING FIREARMS OR HANDLING AMMUNITION MAY RESULT IN EXPOSURE TO LEAD AND OTHER

SUBSTANCES KNOWN TO CAUSE BIRTH DEFECTS, REPRODUCTIVE HARM AND OTHER SERIOUS PHYSICAL INJURY. HAVE ADEQUATE VENTILATION AT ALL TIMES. WASH HANDS THOROUGHLY AFTER EXPOSURE.

6. IF YOUR GUN FAILS TO FIRE WHEN THE TRIGGER IS PULLED, HANDLE WITH CARE!

Occasionally, a gun may not fire when the trigger is pulled. If this occurs, keep the muzzle pointed in a safe direction. Keep your face away from the breech. Then, carefully open the action, unload the firearm and dispose of the cartridge in a safe way.

Any time there is a cartridge in the chamber, your gun is loaded and ready to fire - even if you've tried to shoot and it did not go off. It could go off at any time, so you must always remember *RULE #1* and *WATCH THAT MUZZLE!*

7. ALWAYS WEAR EYE AND EAR PROTECTION WHEN SHOOTING

All shooters should wear protective shooting glasses and some form of hearing protectors while shooting. Exposure to shooting noise can damage hearing, and adequate vision protection is essential. Wearing eye protection when disassembling and cleaning any gun will also help prevent the possibility of springs, spring tensioned parts, solvents or other agents from contacting your eyes. No target shooter, plinker or hunter should ever be without them.

8. BE SURE THE BARREL IS CLEAR OF OBSTRUCTIONS BEFORE SHOOTING

Before you load your firearm, open the action and be certain that there is no cartridge in the chamber. Then glance through the barrel to be sure it is clear of any obstruction. Even a small bit of mud, snow, excess lubricating oil or grease in the bore can cause dangerously increased pressure, causing the barrel to bulge or even burst when firing, which can cause injury to the shooter and bystanders. Make it a habit to clean the bore with a cleaning rod and patch to wipe away anti-rust compounds in the gun each time immediately before you shoot it. If the noise or recoil on firing seems weak or doesn't seem quite "right", cease firing immediately and be sure to check that no obstruction or projectile has become lodged in the barrel.

9. DON'T ALTER OR MODIFY YOUR GUN, AND HAVE GUNS SERVICED REGULARLY

Firearms are complicated mechanisms, which are designed by experts to function properly in their original condition. Any alteration or change made to a firearm after manufacture can make the gun dangerous and will usually void any factory warranties. Do not jeopardize your safety or the safety of others by altering the trigger, safety or other mechanism of any firearm or allowing unqualified person's to repair or modify a gun.

Your gun is a mechanical device, which will not last forever and is subject to wear. As such, it requires periodic inspection, adjustment and service.

10. LEARN THE MECHANISM AND HANDLING CHARACTERISTICS OF THE FIREARM YOU ARE USING

Not all firearms are the same. Consequently, never handle any firearm without first having thoroughly familiarized yourself with the particular type of firearm you are using, the safe gun handling rules for loading, unloading, carrying and handling that firearm, and the rules of safe gun handling in general. Locate the firearm's mechanical safety device and get familiar with the feel and "on/off" positions.

You should always read and refer to the instruction manual you received with your gun, or if you have misplaced the manual, simply contact the manufacturer for a free copy.

Having a gun in your possession is a full-time job. You cannot guess; you cannot forget. You must know how to use, handle and store your firearm safely. Do not use any firearm without having a complete understanding of its particular characteristics and safe use. There is no such thing as a foolproof gun.

SECTION 2

OPERATING INSTRUCTIONS

FOR MORE INFORMATION, PLEASE VISIT OUR WEB SITE AT:
WWW.SAVAGEARMS.COM

PRIOR TO LOADING OR OPERATING, FAMILIARIZE YOURSELF THOROUGHLY WITH THESE OPERATING INSTRUCTIONS AND THE MAIN PARTS OF YOUR FIREARM.

THIS MANUAL SHOULD ALWAYS ACCOMPANY YOUR FIREARM AND BE TRANSFERRED WITH IT UPON CHANGE OF OWNERSHIP. THIS IS YOUR RESPONSIBILITY AND MAY PROTECT YOU FROM FUTURE LIABILITY.

YOUR GUN IS A MECHANICAL DEVICE WHICH WILL NOT LAST FOREVER AND IS SUBJECT TO WEAR. WHEN SOMETHING DOES NOT SOUND, FEEL, OR LOOK RIGHT, SEEK THE ADVICE OF A PROFESSIONAL GUNSMITH IMMEDIATELY. NEVER TAKE A CHANCE.

FAILURE TO OBEY A SAFETY WARNING MAY RESULT IN INJURY TO YOU OR OTHERS.

KNOW HOW TO LOCATE AND OPERATE THE SAFETY MECHANISM.

THE USE OF RELOADS, HANDLOADS, MILITARY SURPLUS, OR ANY OTHER COMMERCIAL/NON COMMERCIAL AMMUNITION NOT MANUFACTURED TO SAAMI (SPORTING ARMS AND MANUFACTURER'S INSTITUTE, INC.) SPECIFICATIONS WILL VOID THE WARRANTY.

SAFETY

The safety on your Stevens bolt action firearm has 3 positions:

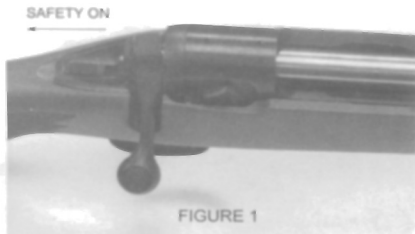
· **FULL SAFE** - Pull safety button towards shooter (trigger blocked – bolt can not be opened).

· **MID POSITION** (trigger blocked – bolt can be opened).

· **SAFETY OFF - READY TO FIRE.** Push safety button away from shooter.

FULL SAFE

1. The safety is in the *FULL SAFE* position when it has been moved fully rearward, covering the red "F" (See *FIGURE 1*).
2. The safety should be moved into the *FULL SAFE* position when the bolt has been closed and the firearm is ready to fire.
3. In the *FULL SAFE* position, the trigger is blocked from moving and the bolt on rifles can not be opened.



CAUTION

WHEN CARRYING A LOADED FIREARM, THE SAFETY MUST ALWAYS BE IN THE FULL SAFE POSITION.

THE ONLY TIME YOU CAN BE ABSOLUTELY CERTAIN THAT A GUN CANNOT FIRE IS WHEN THE ACTION IS OPEN AND IT IS COMPLETELY EMPTY OF AMMUNITION.

MID POSITION

1. *MID POSITION* allows the bolt to be opened and cycled while still blocking the trigger.
2. The safety can either be manually pushed to the *MID SAFE* position or the following sequence performed:
 - lift the bolt handle
 - move the safety to the *FULL SAFE* position
 - push the bolt handle downward

CAUTION

WHEN IN DOUBT – NEVER ASSUME! WITH THE BOLT HANDLE FULLY UPWARD - THE BOLT PULLED TO THE REAR - THE MUZZLE POINTED IN A SAFE DIRECTION - THE SAFETY IN THE MID SAFE POSITION, THE TRIGGER SHOULD NOT HAVE ANY REARWARD MOVEMENT.

SAFETY OFF – READY TO FIRE

1. The safety is in the *OFF* position when moved fully forward, exposing the red "F".

CAUTION

NEVER TRANSPORT/CARRY A LOADED FIREARM WITH THE SAFETY OFF.

BOLT INSTALLATION (SEE FIGURE 2)

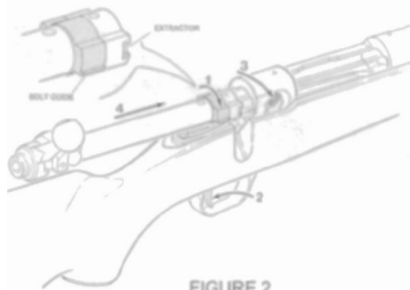
RIGHT HAND ACTION ILLUSTRATED (LEFT HAND IS THE MIRROR IMAGE)

CAUTION

BOLT ASSEMBLIES ARE SPECIFICALLY MATCHED TO A FIREARM. USING ANY OTHER BOLT ASSEMBLY MAY CAUSE EXTENSIVE DAMAGE TO THE FIREARM AND/OR SERIOUS INJURY TO THE SHOOTER OR BYSTANDER.

CERTAIN FIREARMS ARE SHIPPED WITH THE BOLT REMOVED AND PACKED IN A SEPARATE COMPARTMENT WITHIN THE BOX. BEFORE INSTALLING THE BOLT, VERIFY THAT THE 4 DIGITS ENGRAVED BY THE EXTRACTOR MATCH THE LAST 4 DIGITS OF THE SERIAL NUMBER.

1. Rotate the FRONT BAFFLE (1) to line-up the BOLT GUIDE with the EXTRACTOR.
2. Pull the TRIGGER (2) fully rearward and hold it in that position.
3. Press down on the COCKING INDICATOR (3).
4. WITH NO AMMUNITION IN THE FIREARM, insert the BOLT (4) into the firearm, pushing it forward.
5. Close the BOLT HANDLE (pushing downward) and verify that the "THREE POSITION SAFETY" is operational as explained in the beginning of SECTION 2.



LOADING

FIREARMS SHOULD BE LOADED ONLY WHEN YOU ARE IN THE FIELD, ON THE TARGET

RANGE, OR AT A SHOOTING AREA READY TO SHOOT.

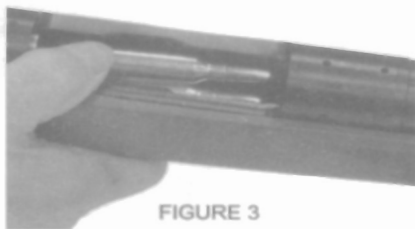
ALWAYS KEEP THE MUZZLE POINTED IN A SAFE DIRECTION.

USE ONLY THE CORRECT AMMUNITION THAT IS STAMPED ON THE SIDE OF THE BARREL.

THOROUGHLY CLEAN THE INSIDE OF THE BARREL AND CHAMBER TO ASSURE THERE ARE NO POSSIBLE OBSTRUCTIONS PRIOR TO LOADING.

KNOW YOUR GUN! IF ANYTHING 'FEELS' OR SOUNDS DIFFERENT WHEN LOADING OR SHOOTING - STOP - AND HAVE A QUALIFIED GUNSMITH TAKE A LOOK! NEVER TAKE A CHANCE WITH SOMETHING THAT YOU ARE UNSURE OF ... ALWAYS ASK A PROFESSIONAL.

ALWAYS KEEP THE MUZZLE POINTED IN A SAFE DIRECTION.



1. With the muzzle pointed in a safe direction, move the safety forward to the SAFETY OFF - READY TO FIRE position.

2. Lift the bolt handle but do not pull to the rear.

3. Move the safety fully rearward to the FULL SAFE position.

4. Pull bolt handle rearward.

The safety will move to the MID SAFE position automatically when the bolt is closed.

5. As shown in FIGURE 3, load the correct caliber cartridges into the magazine by pressing downward and to the rear, filling the magazine to capacity (see SECTION 4).

6. Moving the bolt handle forward will push the first cartridge from the magazine into the chamber.

7. With the bolt fully forward, push the bolt handle downward to lock the bolt into firing position.

WHEN THE BOLT IS FULLY CLOSED, A LIVE CARTRIDGE WILL BE IN THE CHAMBER.

ALWAYS KEEP THE MUZZLE POINTED IN A SAFE DIRECTION.

8. Move the safety fully rearward to the FULL SAFE position; locking the bolt handle.

TO LOAD A SINGLE CARTRIDGE INTO THE CHAMBER

1. With the muzzle pointed in a safe direction, insert a cartridge into the chamber as shown in FIGURE 4.

2. Depressing the cartridges in the magazine with one hand, slowly push the bolt forward allowing it to slide over the top of the cartridges in the magazine.

3. With the bolt fully forward, push the bolt handle downward to lock the bolt into firing position.

4. Move the safety fully rearward to the FULL SAFE position; locking the bolt handle.

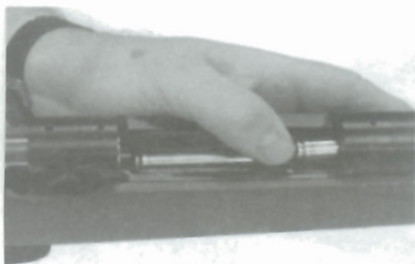


FIGURE 4

TO FIRE

DO NOT MOVE THE SAFETY FORWARD TO THE SAFETY OFF – READY TO FIRE POSITION UNTIL YOU ARE READY TO SHOOT.

1. Keep your finger off the trigger and out of the trigger guard until you are ready to shoot.

THE ONLY TIME YOU CAN BE ABSOLUTELY CERTAIN THAT A GUN CANNOT FIRE IS WHEN THE ACTION IS OPEN AND IT IS COMPLETELY EMPTY OF AMMUNITION.

2. Always look carefully around to be sure that no one will cross in front of you when you are ready to shoot.

3. Place the firearm to your shoulder and move the safety forward to the SAFETY OFF – READY TO FIRE position and take aim.

NEVER TOUCH THE TRIGGER ON A FIREARM UNTIL YOU ACTUALLY INTEND TO SHOOT.

NEVER POINT YOUR GUN AT ANYTHING YOU DO NOT INTEND TO SHOOT.

4. Place your finger in the trigger guard and when you are on target, squeeze the trigger slowly.

NO ONE CAN CALL A BULLET BACK.

5. Pull up and fully rearward on the bolt handle to open the bolt and extract the fired case.

ALWAYS KEEP THE MUZZLE POINTED IN A SAFE DIRECTION.

6. Moving the bolt handle forward will push the next cartridge from the magazine into the chamber.

7. With the bolt fully forward, push the bolt handle

downward to lock the bolt into firing position.

8. Move the safety fully rearward to the FULL SAFE position, locking the bolt handle.

UNLOADING YOUR RIFLE

1. With the muzzle pointed in a safe direction, your finger completely away from the trigger and out of the trigger guard, move the safety forward to the SAFETY OFF – READY TO FIRE position.

KEEP YOUR FINGERS AWAY FROM THE TRIGGER.

2. Lift the bolt handle upward until it stops but do not pull to the rear.

3. Move the safety fully rearward to the FULL SAFE position, then push the bolt handle downward until it stops.

4. The safety will move to the MID SAFE position automatically, allowing the bolt to be cycled while the trigger is still blocked.

CAUTION

WHEN IN DOUBT – NEVER ASSUME! WITH THE BOLT HANDLE FULLY UPWARD - THE BOLT PULLED TO THE REAR - THE MUZZLE POINTED IN A SAFE DIRECTION - THE SAFETY IN THE MID SAFE POSITION, THE TRIGGER SHOULD NOT HAVE ANY REARWARD MOVEMENT.

5. Placing one hand over the ejection port, and your finger completely away from the trigger and out of the trigger guard, slowly pull the bolt handle to the rear to extract the cartridge from the chamber.

6. Remove the cartridge with your fingers.

7. Push the bolt fully forward until it engages the next cartridge behind the extractor (the bolt handle need not be pushed down).

8. Repeat steps 5 through 7 until the magazine is empty.

CAUTION

LOOK AND FEEL! BE SURE THE CHAMBER AND MAGAZINE ARE COMPLETELY EMPTY — DO NOT ASSUME!

A LOADED GUN HAS NO PLACE IN OR NEAR A CAR, TRUCK OR BUILDING.

BE SURE THE BOLT IS OPEN AND THERE IS NO LIVE AMMUNITION IN EITHER THE CHAMBER OR MAGAZINE.

CLEANING AND CARE OF YOUR FIREARM

YOUR GUN IS A MECHANICAL DEVICE WHICH WILL NOT LAST FOREVER AND IS SUBJECT TO WEAR.

TO REMOVE THE BOLT

ALWAYS KEEP THE MUZZLE POINTED IN A SAFE DIRECTION.

1. Lift the bolt handle and pull fully rearward.
 2. When the bolt is opened, look and feel to be sure there are no cartridges in either the chamber or magazine.
 3. Pull back on the trigger while pressing down on the COCKING INDICATOR (see FIGURE 2).
 4. Slide the bolt out of the rear of the receiver.
 5. Care should be taken not to hit the stock with the bolt.
-

CAUTION

BOLT ASSEMBLIES ARE SPECIFICALLY MATCHED TO A FIREARM. USING ANY OTHER BOLT ASSEMBLY MAY CAUSE EXTENSIVE DAMAGE TO THE FIREARM AND/OR SERIOUS INJURY TO THE SHOOTER OR BYSTANDER.

DISASSEMBLE ONLY ONE FIREARM AT A TIME TO AVOID INTERCHANGING COMPONENTS.

CLEANING THE BORE

LOOK AND FEEL! BE SURE THE CHAMBER AND MAGAZINE ARE COMPLETELY EMPTY — DO NOT ASSUME!!!

NEVER ATTEMPT TO DISASSEMBLE, CLEAN, OR OIL A LOADED FIREARM!

BE SURE TO READ AND UNDERSTAND ALL OF THE CAUTIONS AND WARNINGS ON ALL THE SOLVENTS AND CHEMICALS PRIOR TO USE. FOLLOW THE MANUFACTURER'S INSTRUCTIONS FOR BEST CLEANING RESULTS.

1. Prepare an area for cleaning the firearm with a suitable surface, adequate ventilation, correct caliber cleaning rod, brush, patches, powder solvent, and oil.
2. Remove the bolt.
3. Lay the firearm horizontally with the ejection port facing down.

ALWAYS STARTING FROM THE CHAMBER END, PUSH THE CLEANING ROD THROUGH THE BORE AND OUT THE MUZZLE END.

4. Using a small amount of powder solvent on the brush, push the cleaning rod through the barrel several times.
5. Unscrew the brush from the cleaning rod and replace it with a patch tip.
6. Push a new patch through the bore starting from the chamber end and out the muzzle.
7. Repeat step 6 several times.
8. Push a new patch saturated with gun oil through the bore.

9. Push a new dry patch through the bore to remove the excess oil.

10. When done, always verify that the "THREE POSITION SAFETY" is operational as explained in the beginning of SECTION 2.

CHECK THE BORE CAREFULLY WHEN DONE TO BE SURE THERE ARE NO OBSTRUCTIONS (I.E. PIECES OF CLEANING PATCH, ETC.).

A VERY THIN FILM OF OIL IS SUFFICIENT PROTECTION - DO NOT OVER OIL!!!

YOUR GUN IS A MECHANICAL DEVICE WHICH WILL NOT LAST FOREVER AND IS SUBJECT TO WEAR. CONTACT SAVAGE ARMS SERVICE DEPARTMENT FOR PERIODIC INSPECTION, ADJUSTMENT AND SERVICE.

FAILURE TO PROPERLY MAINTAIN YOUR FIREARM MAY LEAD TO DAMAGE AND/OR SERIOUS INJURY TO THE SHOOTER OR BYSTANDER.

PROTECTING METAL SURFACES

1. In order to be able to reach all surfaces, remove the bolt prior to cleaning and oiling.
2. With a soft cloth, remove any foreign matter (i.e. mud, twigs, grass).
3. Apply a thin coat of gun oil on all cleaned metal surfaces. Rubbing may be necessary to remove any signs of rust.

4. Where accessible, clean and lightly oil interior metal surfaces.

5. When done, always verify that the "THREE POSITION SAFETY" is operational as explained in the beginning of SECTION 2.

DO NOT DISASSEMBLE THE BOLT ASSEMBLY.

CHECK THE BORE CAREFULLY WHEN DONE TO BE SURE THERE ARE NO OBSTRUCTIONS (I.E. PIECES OF CLEANING PATCH, ETC.).

SECTION 3

PARTS LIST AND DIAGRAM

FOR MORE INFORMATION, PLEASE VISIT OUR WEB SITE AT:
WWW.SAVAGEARMS.COM

AS A 'CUSTOMER DRIVEN' COMPANY, PARTS MAY BE ORDERED DIRECTLY FROM SAVAGE ARMS [413-568-7001] BETWEEN THE HOURS OF 9:00 AND 3:30 (EASTERN STANDARD TIME). THERE IS A MINIMUM ORDER AND PLEASE ALLOW 2 WEEKS FOR DELIVERY.

PARTS DENOTED WITH A "*" ARE RESTRICTED TO FACTORY INSTALLATION ONLY.

PARTS DENOTED WITH A "*" CAN ONLY BE SOLD TO AN INDIVIDUAL POSSESSING A CURRENT FEDERAL FIREARMS LICENSE.

PLEASE BE ADVISED THAT SOME PARTS MAY REQUIRE FITTING. STEVENS BEARS NO RESPONSIBILITY FOR THE FUNCTION OR PERFORMANCE OF ANY FIREARM THAT HAS BEEN REPAIRED OR MODIFIED BY OTHER THAN SAVAGE ARMS' SERVICE DEPARTMENT. AS SUCH, STEVENS ACCEPTS NO RESPONSIBILITY/LIABILITY FOR ANY DIRECT AND/OR CONSEQUENTIAL DAMAGE AND/OR INJURY RESULTING FROM THE USE OF A FIREARM REPAIRED OR MODIFIED BY OTHER THAN THE SAVAGE ARMS' SERVICE DEPARTMENT.

Item #	Description
**1	Safety assembly
**1A	"8-32 x 1/4"" socket screw"
**1B	Safety detent spring
**1C	"5-40 x 3/16"" pan head screw"
**1D	Safety
**2	Trigger bracket Kit
**2A	Safety retaining ring
**2B	Trigger pull adjusting screw
**2C	Trigger pin
**2D	Safety bearing pin
**2E	Trigger pull adjusting spring
**2F	Trigger bracket
**3	Trigger assembly
**3A	"8-32 x 3/8"" socket screw"
**3B	Trigger
**4	Sear Kit
**4A	Sear pin
**4B	Sear spring
**4C	Sear
5	Magazine box
6	Magazine follower assy with coiled spring
7	Magazine follower assy with leaf spring

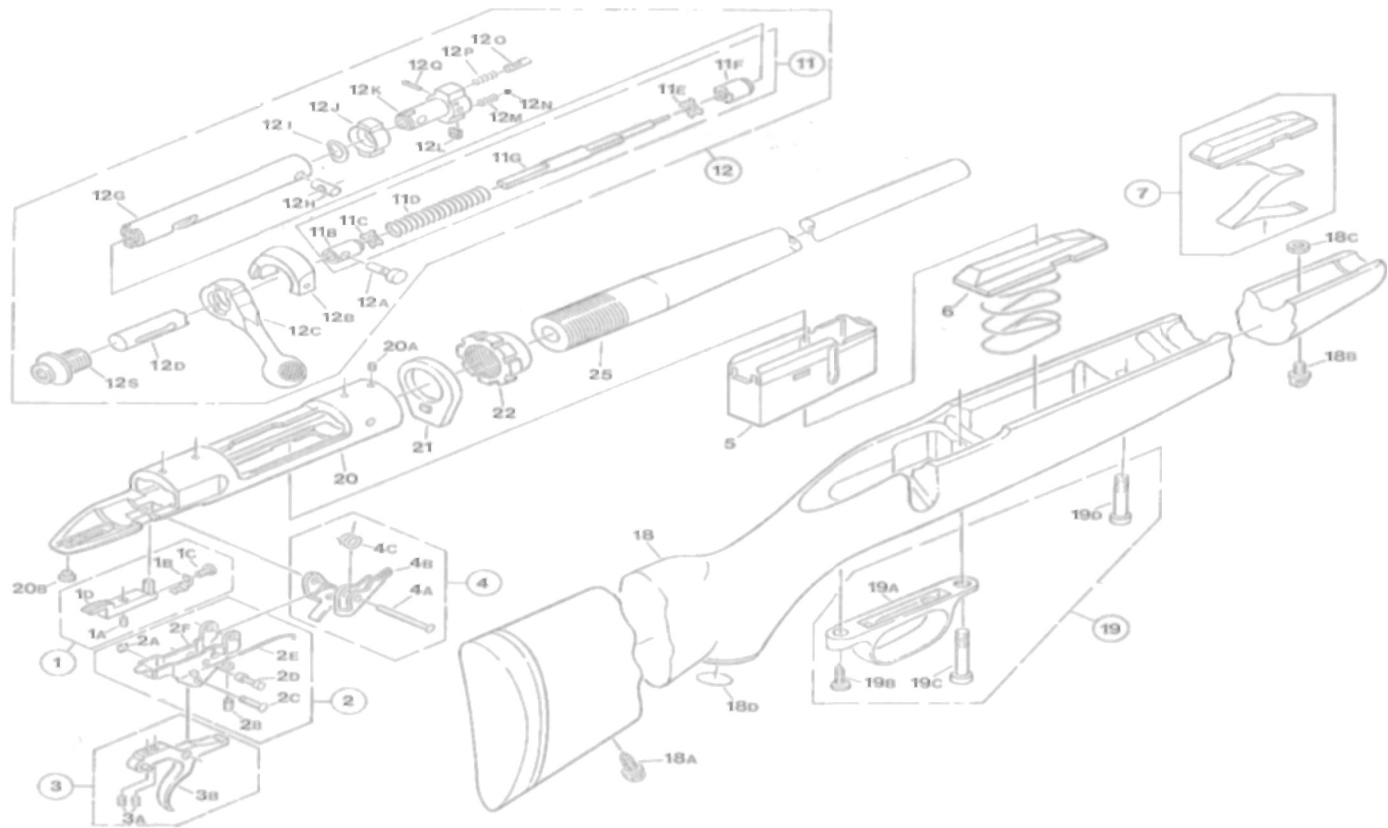
**11	Firing pin assembly
**11B	Cocking piece
**11C	Cocking piece lock washer
**11D	Mainspring
**11E	Firing pin stop nut washer
**11F	Firing pin stop nut
**11G	Firing pin

**12	Bolt assembly
12A	Cocking piece pin
12B	Rear baffle assembly
12C	Bolt handle
12D	Cocking piece sleeve
12G	Bolt body
12H	Bolt head retaining pin
12I	Front baffle washer
12J	Front baffle
**12K	Bolt head
12L	Extractor
12M	Extractor spring
12N	"1/8"" steel ball"
12O	Ejector
12P	Ejector spring
12Q	Ejector retaining pin
12S	Bolt assembly screw
**11	Firing Pin Assy

18	Stock assembly
18A	Swivel stud
18B	Swivel stud (machine screw thread)
18C	10-32 lock nut
18D	Medallion

19	Trigger Guard Kit
19A	Trigger guard
19B	Rear trigger guard screw
19C	Rear action screw
19D	Front action screw

*20	Receiver
20A	6-48 dummy screw
20B	Safety insert
*21	Recoil lug
*22	Barrel lock nut
*25	Barrel



SECTION 4**AMMUNITION BULLET WEIGHTS AND
MAGAZINE CAPACITIES**

FOR MORE INFORMATION, PLEASE
VISIT OUR WEB SITE AT:
WWW.SAVAGEARMS.COM

**BULLET SPECIFICATIONS AND TRAJECTORIES
ARE AVAILABLE DIRECTLY FROM THE
AMMUNITION MANUFACTURER.**

**THE FOLLOWING TABLE LISTS THE BULLET
WEIGHTS USED FOR 100 YARD TARGETING
EVALUATION OF STEVENS FIREARMS.**

**PERFORMANCE MAY VARY BASED ON THE
AMMUNITION BRAND/BULLET TYPE/BULLET
WEIGHT, INDIVIDUAL CHARACTERISTICS OF
THE FIREARM, AND/OR SHOOTING
CONDITIONS.**

WARNING:

**USE ONLY THE CORRECT AMMUNITION THAT
IS STAMPED ON THE SIDE OF THE BARREL**

**THE USE OF RELOADS, HANDLOADS, MILITARY
SURPLUS, OR ANY OTHER COMMERCIAL/NON
COMMERCIAL AMMUNITION NOT
MANUFACTURED TO SAAMI (SPORTING ARMS
AND MANUFACTURER'S INSTITUTE, INC.)
SPECIFICATIONS WILL VOID THE WARRANTY.**

Caliber	Bullet Weight (Grains)
223 Remington	69 grain - Sierra Match King Boat Tail Hollow Point
22-250 Remington	40 grain - Sierra Varminter Hollow Point
243 Winchester	70 grain - Nosler Ballistic Tip
25-06 Remington	90 grain - Sierra Game King Boat Tail Hollow Point
270 Winchester	130 grain - Nosler Ballistic Tip
7mm-08 Remington	140 grain - Nosler Ballistic Tip
7mm Remington Magnum	150 grain - Nosler Ballistic Tip
300 Winchester Magnum	180 grain - Nosler Ballistic Tip
308 Winchester	168 grain - Sierra Match King
30-06 Springfield	168 grain - Sierra Match King

Caliber	Magazine Capacity
223 Remington	4 - 1 in the chamber
22-250 Remington	4 - 1 in the chamber
243 Winchester	4 - 1 in the chamber
25-06 Remington	4 - 1 in the chamber
270 Winchester	4 - 1 in the chamber
7mm-08 Remington	4 - 1 in the chamber
7mm Remington Magnum	3 - 1 in the chamber
300 Winchester Magnum	3 - 1 in the chamber
308 Winchester	4 - 1 in the chamber
30-06 Springfield	4 - 1 in the chamber

SECTION 5

SCOPE RINGS/BASES

FOR MORE INFORMATION, PLEASE
VISIT OUR WEB SITE AT:
WWW.SAVAGEARMS.COM

RINGS AND BASES FOR MOUNTING A SCOPE

The following companies manufacturer *RINGS* and *BASES* that fit Stevens firearms.

The manufacturer's listed below should be contacted for specific part numbers and information.

WEAVER MOUNTS
P.O. Box 39
Onalaska, WI 54650
1-800-635-7656
www.weaver-mounts.com

KWIK-SITE
5555 Treadwell
Wayne, MI 48184
734-326-1500
www.kwiksiteco@aol.com

B-SQUARE
P.O. Box 11281
Fort Worth, TX 76110
800-433-2909
www.b-square.com

BURRIS
331 East 8th Street
Greeley, CO 80631
970-356-1670
www.burrisoptics.com

MILLETT
16131 Gothard Street
Huntington Beach, CA
800-645-5388
www.millettights.com

LEUPOLD
14400 NW Greenbrier Parkway
Beaverton, OR 97006
503-526-1400
www.leupold.com

SECTION 6

STATEMENT OF LIMITED WARRANTY

FOR MORE INFORMATION, PLEASE
VISIT OUR WEB SITE AT:
WWW.SAVAGEARMS.COM

STATEMENT OF LIMITED WARRANTY

Please complete the *WARRANTY REGISTRATION CARD* and return it to Savage Arms within ten (10) days from the date of purchase.

Stevens must be notified within one (1) year from the date of purchase of any defect in materials or workmanship encountered during normal use.

WHO IS COVERED?

- The original owner (with proof of purchase).

WHAT IS COVERED?

- Any defect in materials or workmanship performed at Savage Arms.

HOW LONG IS THE WARRANTY PERIOD?

- One (1) year from the date of purchase.

WHAT IS NOT COVERED?

PERSONAL INJURY, PROPERTY DAMAGE, AND/OR DAMAGE TO THE FIREARM CAUSED BY:

- Use of reloads, handloads, or any other non commercially available ammunition not manufactured to SAAMI (Sporting Arms and Ammunition Manufacturers' Institute, Inc.) specifications.

- Negligence to provide proper care and maintenance.

- Alterations/modifications performed without the written authorization of Savage Arms, Inc. Service Department.

- Normal wear, tear, and/or corrosion.

- Accidental discharge, careless handling, and/or misuse.

- Barrel obstructions.

EXCLUSIONS AND LIMITATIONS:

This *WARRANTY* and the remedies set forth herein are exclusive and take the place of all other expressed or implied *WARRANTIES* (including any implied *WARRANTY* of merchantability or fitness for any particular purpose which are disclaimed). No other representations or claims of any nature shall be binding on or obligate Stevens.

Stevens excludes any incidental and consequential damages under this warranty. Some states do not allow exclusions or limitations on how long an implied warranty lasts, so the above limitations may not apply to you.

This **WARRANTY** gives you specific legal rights. You may have other rights, which will vary, from state to state.

RETURNING A FIREARM:

For **WARRANTY** claims, proof of purchase must accompany the firearm.

It is a violation of Federal Law to ship a firearm with live ammunition either in the box or in the firearm itself. If received, The Bureau of Alcohol, Tobacco, and Firearms must be notified!

Stevens is not responsible for the loss or damage to any accessories shipped with the firearm.

If there is a question whether the firearm should be returned or parts could be purchased, please call 1-413-568-7001 between 9:00 am and 3:30 p.m. EST and ask for the Service/Warranty Department.

All firearms are to be sent to Savage Arms at the owner's expense. Warranty repairs will be returned to the owner at Stevens expense.

1. Pack the firearm in its original box if possible (or a similar suitable box), being careful to include any support pieces.
2. Enclose a brief note including:
 - name, address and phone number of sender
 - serial number of firearm

- description of the problem you are having
- bullet manufacturer, weight, and type
- any other information which you feel may be helpful.

3. Return to:

Savage Arms
100 Springdale Road
Westfield, MA 01085
Attn: Service Department

4. If there will be a charge involved for the repair, a quote will be sent within fourteen (14) working days.

- If there is no response from the quote within (30) days, the firearm will be returned COD (\$20.00 Shipping/Handling).
- Firearms will be repaired typically 3 weeks after receipt of payment in the order they were received.



WARNING

Children are attracted to and can operate firearms that can cause severe injury or death. Prevent child access by always keeping guns locked away and unloaded when not in use. If you keep a loaded firearm where a child obtains and improperly uses it, you may be fined or sent to prison.



ADVERTENCIA

A los niños los atraen las armas de fuego y las pueden hacer funcionar. Ellos pueden causarse lesiones graves y la muerte. Evite que los niños tengan acceso a las armas de fuego guardándolas siempre con llave y descargadas cuando no las esté utilizando. Si usted tiene un arma de fuego cargada en un lugar en que un niño tiene acceso a ella y la usa indebidamente, le pueden dar una multa o enviarlo a la cárcel.

Stevens[®]
The Definition of Value

Savage Arms, Inc.
100 Springdale Road
Westfield, MA 01085

www.savagearms.com