
Revolvers



Safety, Instruction & Parts Manual



Smith & Wesson

**SMITH & WESSON REVOLVERS
SAFETY, INSTRUCTION & PARTS MANUAL**

**READ THESE INSTRUCTIONS
AND WARNINGS CAREFULLY,
BE SURE YOU UNDERSTAND
THESE INSTRUCTIONS AND WARNINGS
BEFORE USING THIS FIREARM.**

This SAFETY, INSTRUCTION & PARTS MANUAL should always accompany this firearm and be transferred with it upon change of ownership or when the firearm is loaned or presented to another person. A copy of the SAFETY, INSTRUCTION & PARTS MANUAL is available FREE upon request from:

**Smith & Wesson
Customer Support Center
2100 Roosevelt Avenue
P.O. Box 2208
Springfield, MA 01102-2208
Tel: 1-800-331-0852 Ext. 2904**

Safety Instructions and Warnings

Smith & Wesson has designed the most reliable firearms available. Smith & Wesson firearms incorporate many safety features; however, safe gun handling is YOUR personal responsibility.

Firearms are dangerous. Firearms can cause serious injury and death. Safety must be the prime consideration of anyone who handles firearms. Always treat a firearm as though it were loaded. Always keep the muzzle pointed in a safe direction.

In owning a firearm, you must undertake full-time responsibility for your firearm's safety and security. You must protect yourself and all others against injury from the firearm. In particular, you must secure firearms from children.

Do not allow any alteration or replacement of parts in your Smith & Wesson firearm unless performed by a qualified gunsmith using genuine Smith & Wesson parts. If you do otherwise, improper functioning of your firearm and serious injury may result.

Any Smith & Wesson firearm is a precision instrument designed to function reliably with proper care and knowledgeable use. You must understand the safe operation and use of your Smith & Wesson firearm. Read and follow these instructions carefully. Do not use your firearm unless you fully understand these instructions and the safe operation of your firearm.

Many safety features are incorporated in your firearm. For your safety and the safety of others, do not rely on mechanical features alone. Only your safe gun-handling habits will ensure the safe use of your firearm. This is your responsibility. Accidents do not just happen. Accidents are the result of violating the rules of safe gun handling and common sense.

Insure the safe use of firearms. Follow these essential safety instructions and warnings.

Basic Rules

- **Never** point a firearm at anyone or anything you do not intend to shoot.
- Before handling any firearm, understand its operation.
- **Always** have your firearm pointed in a safe direction.
- Keep your firearm unloaded when not in use.
- Treat every firearm as if it were loaded.
- Never pass your firearm to another person until the cylinder or action is open and you visually check that it is unloaded.
- Place your finger inside the trigger guard only when you are ready to fire.
- If you must carry a loaded firearm, **Always** carry it with the muzzle pointing in a safe direction. Never carry or store firearms with the hammer in the cocked position.
- **Do Not** allow a firearm to be used by individuals who do not understand its safe operation and the rules of safe gun-handling.
- **Be sure** all accessories, such as holsters and grips, are compatible with the firearm and that the accessories do not interfere with safe operation.
- When transporting your firearm, be sure your firearm is unloaded and that the cylinder or action is open.
- Safe and secure storage of your firearm is one of the most important responsibilities. It is a full-time responsibility. You must always secure your firearm and ammunition so that they are not accessible to children or other unauthorized persons.
- Store your firearm unloaded. Your firearm and ammunition should be stored separately and in places and in a manner inaccessible to children and unauthorized persons.
- Smith & Wesson has provided a lock for use with your firearm. There are also a variety of other locks and safe storage containers available in the marketplace which may be appropriate for your particular needs. By purchasing this firearm you have taken on the responsibility of safely securing the firearm at all times and preventing its unauthorized use. It is your personal responsibility to select and use whatever devices or practices that will enable you to safely secure your firearm at all times.
- You must be familiar with all local and state laws regarding the safe storage of your firearm. The failure to safely secure your firearm may result in unauthorized access to your firearm by another, as well as exposing you to both criminal and/or civil penalties.
- Be sure of your target and what is beyond your target.

Preparation For Firing

- Wear safety glasses and ear protection, whether indoors or out.
- Select a place to shoot that has a safe backstop, is free from obstructions and water surfaces which cause ricochets.
- Always be aware of other people so that persons cannot accidentally walk into the line of fire.
- Position the shooter and all others so that they are not within an area where they may be struck by particle-spitting from a revolver or by ejected cases from other types of firearms.
- Keep fingers and other parts of your body away from the muzzle and away from the gap between the revolver barrel and cylinder.
- When firing on a target range, be alert and follow the range officer's commands.
- Before anyone is allowed forward of the firing position, be sure that all cylinders and actions of firearms are open, that chambers are clear of cartridges, magazines are removed, and that firearms are pointing in a safe direction.
- Never use alcoholic beverages or other drugs before or during shooting.
- Be alert at all times. Never shoot if you are tired, cold or impaired in any way.
- Never cross obstacles such as fences or streams with a loaded firearm.
- If you are carrying a loaded firearm in the field, keep the muzzle pointed in a safe direction.
- Think before shooting.

Ammunition

- A firearm and ammunition are a system. Their performance is closely related.
- Your firearm has been designed for ammunition of a specific type and caliber; do not alter the barrel, cylinder, or chamber of your gun.
- You are responsible for selecting ammunition that meets industry standards and is appropriate for this firearm. Use only commercially manufactured ammunition with internal ballistic pressures which are in strict accordance with the specifications of the Sporting Arms and Ammunition Manufacturers' Institute. Never use non-standard, reloaded or "handloaded" ammunition which has not been subjected to internal ballistic pressure testing. Ammunition, especially reloaded or hand loaded ammunition, may have many manufacturing and quality variables (such as the type and amount of gun powder). Any ammunition that is improperly manufactured, even in the slightest degree, may fail to fire or may generate excessive internal pressures which can damage or even rupture the firearm, causing personal injury to the shooter or those in the immediate vicinity.
- Whenever **rimless pistol** cartridges are used in the cylinder of a Smith & Wesson revolver, (except M547) full or half-moon clips **MUST** be used to both position and extract such cartridges. Failure to use ammunition clips with rimless cartridges may result in malfunction of the revolver.
- Locate the caliber designation printed on the barrel of your revolver. This information indicates the ammunition caliber that should be used in this firearm.

- Additional ammunition calibers can be fired from the following list of select calibers.

| <u>Caliber on Barrel</u> | <u>Can also Fire</u> |
|--------------------------|-------------------------------|
| .44 Magnum | .44 Special |
| .357 Magnum | .38 Special, .38 Special +P |
| .45 ACP | .45 Auto Rim |
| .22LR | .22L, .22 Short, .22CB, .22BB |
| 10mm | .40 S&W |

- Use only ammunition specifically recommended by Smith & Wesson for your firearm. Never mix ammunition.
- Never use a cartridge not specifically designated for use in your firearm. Excessive pressure can damage or even blow up any firearm.
- Ammunition with velocities and pressures higher than those for which the firearm was designed, for example "+P" in .38 Special caliber, will subject the firearm to additional stress and may cause excessive wear. Periodically check the barrel breech, forcing cone, gas ring, and nearby frame areas for erosion, cracks, or other signs of excessive wear.
- If you regularly fire .357 Magnum cartridges periodically check the barrel breech, forcing cone, gas ring, and nearby frame areas for erosion, cracks, or other signs of excessive wear.
- If your firearm fails to fire when the hammer falls (misfires), keep the firearm pointed in a safe direction, remove your finger from the trigger, do not place your hand around the cylinder, wait 10 seconds, remove the cartridge from the chamber and dispose of it properly.

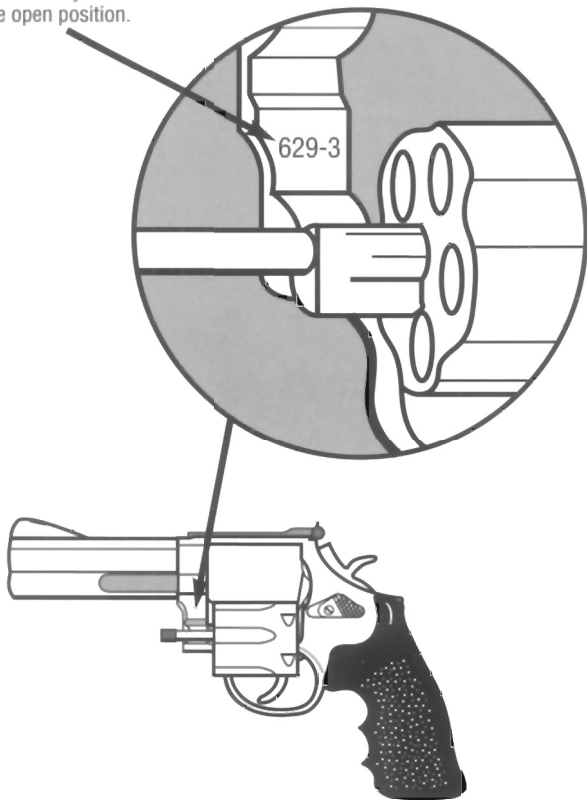
- If you have heard an unusual sound or felt an unusual recoil on firing, stop firing, wait 10 seconds, unload the firearm, and examine the barrel bore for obstructions.
- Make sure your barrel is clear and free of obstructions. If you see an obstruction, return your firearm to Smith & Wesson or take it to a qualified gunsmith. Never fire a firearm with an obstructed barrel.

AMMUNITION WARNINGS

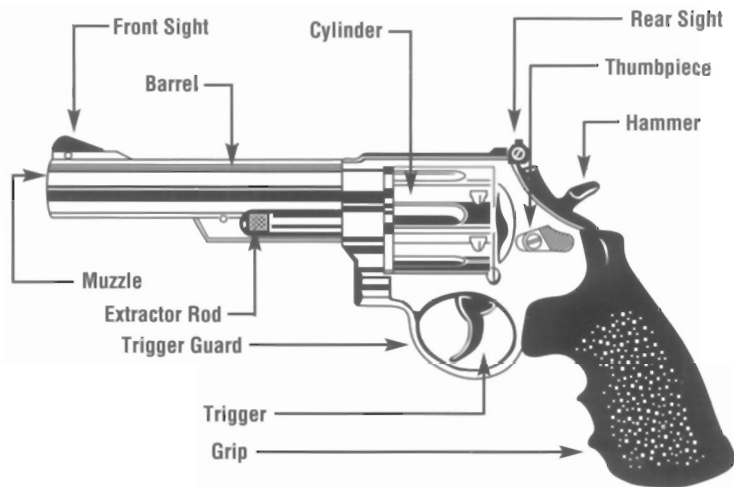
- **“Plus-P” (+P)** ammunition generates pressures significantly in excess of the pressures associated with standard ammunition. Such pressures may affect the wear characteristics or exceed the margin of safety built into many revolvers and could therefore be DANGEROUS.
 - **“Plus-P” (+P)** ammunition should not be used in medium (K frame) revolvers manufactured prior to 1958. Such pre-1958 medium (K frame) revolvers can be identified by the absence of a model number stamped inside the yoke cut of the frame. (i.e., the area of the frame exposed when the cylinder is in the open position).
 - The **“Plus-P-Plus” (+P+)** marking on ammunition merely designates that it exceeds established industry standards, but the designation does not represent defined pressure limits and therefore such ammunition may vary significantly as to the pressures generated.
- **“Plus - P- Plus” (+P+)** ammunition is not recommended for use in Smith & Wesson firearms.
 - In the Model 940 revolver, some brands of 9mm parabellum ammunition may cause difficulty in extracting spent cartridge cases from the cylinder. If this situation occurs, thoroughly clean the cylinder charge holes with solvent. If this condition persists, we recommend changing to another brand of 9mm parabellum ammunition.
 - Smith & Wesson has found wide variations in primer sensitivity between some brands and types of .22 LR ammunition. Smith & Wesson recommends that before you put your .22 LR revolver into regular use that you fire several boxes of your choice of ammunition through it to determine reliability of ignition. If “failure to fire” occurs, try different types of brands of .22 LR ammunition until a reliable loading is found.

Model Number Identification

The model number and the number that follows the dash appear here when the cylinder is in the open position.



Inspecting Your Revolver



(Figure 1)

When you inspect your revolver, you should first check for yourself to insure that it is unloaded. To do this, keep the barrel of the gun pointed in a safe direction, press the thumbpiece forward and push the cylinder to the left. You are now able to visually check all charge holes for cartridges and the barrel for obstructions. You must follow this procedure every time your revolver is handled, inspected, handed to another person, transported or stored.

Your revolver has been treated with either a preservative or oil to protect it against corrosion. Before using it, all excess oil should be wiped from exposed areas, the bore and charge holes using a clean swab or patch. A light coat of high quality gun oil should be applied to the outside surfaces and mechanism. Care should be taken not to oil the mechanism to the degree that dust and lint may be trapped by the oil.

Loading, Firing, Unloading Your Revolver

Loading

Do not load your revolver until you are at the shooting site and ready to use it. To load your revolver, hold it in one hand with the muzzle pointed in a safe direction. Press the thumbpiece forward to unlock the cylinder. Push the cylinder to the left and place a round of the correct ammunition in each charge hole. Grasp the revolver in the shooting hand with your **fingers outside the trigger guard**, rotate the cylinder back into the frame until it locks into place. Your revolver is now fully loaded and ready to be fired in either the single action or double action mode. The hammer is in the "at rest" position as shown in Figure 2. Always check your revolver visually to be sure your hammer and trigger are in these positions before holstering or carrying your revolver. Never holster, carry or store your revolver with the hammer cocked. Remember to keep your revolver pointed in a safe direction. Never leave a loaded firearm unattended.

"At Rest" Position (Figure 2)



Single Action Firing

With your fingers outside of the trigger guard and a firm hold on the grips, place the thumb on the hammer spur. Draw the hammer fully rearward until it is cocked as shown in Figure 3. You will note that the trigger has also moved rearward. Never touch the trigger until you are ready to fire. To fire, pull the trigger and hold it rearward. After firing, you must allow the trigger to move fully forward before you can fire another shot. Failure to do so will prevent the lockwork from fully cycling and will prevent your being able to fire the next shot. Keep your finger off the trigger and outside the trigger guard until you are ready to fire again.

"Cocked" Position (Figure 3)



Loading, Firing, Unloading Your Revolver

Decocking (or uncocking):

If you decide not to fire in single action from a cocked position, point the gun in a safe direction. Decock the revolver by placing your thumb on the hammer spur. You must control the hammer with your thumb when decocking the revolver. If the hammer slips while the trigger is held to the rear, your revolver will discharge. While firmly holding the hammer, apply pressure to the trigger to release the hammer as shown in Figure 4. Immediately after the hammer has come out of the cocked position, release the trigger and withdraw finger from the trigger guard as shown in Figure 5. Carefully ease the hammer forward under control of the thumb on the hammer spur until the hammer is in the "at rest" position as shown in Figure 6. Failure to release the trigger and to withdraw your finger from the trigger guard immediately after the hammer has come out of the cocked position may result in the interruption of the forward movement of the hammer between the cocked position and the "at rest" position. In this case, the hammer will appear to have stopped between the full cock and "at rest" positions. If this occurs, treat the revolver as if it were cocked and return the hammer with your thumb to the fully cocked position. Then properly decock the hammer to the "at rest" position. Practice this procedure with your **unloaded** revolver until you have mastered decocking. Always be aware of the hammer position. Never holster, carry or store a cocked revolver. Be sure the hammer is in the "at rest" position as shown in Figure 2.

Decocking (Figure 4)



Decocking (Figure 5)



Decocking (Figure 6)



Loading, Firing, Unloading Your Revolver, Maintenance

*Double Action Firing

While holding the grips firmly, pull the trigger fully to the rear. The hammer will move rearward and then fall forward to fire the revolver. Never touch the trigger until you are ready to fire. After firing, you must allow the trigger to move forward fully before you can fire another shot. Failure to do so will prevent the lockwork from fully cycling and will prevent your being able to fire the next shot. Keep your finger off the trigger and outside the trigger guard until you are ready to fire again.

Unloading

To remove either live or spent cartridges from the cylinder, first point the barrel in a safe direction. Press the thumbpiece forward and swing and hold the cylinder fully to the left. With the barrel pointing upward in a safe direction, press the extractor rod through the cylinder and remove all cartridges from the cylinder. Carefully count the cartridges to be sure you have the correct number. Make a visual check to be sure all charge holes are empty. When unloading your revolver, always be sure to control the muzzle. Never point it in a direction where there may be persons. Store ammunition separately from firearm after unloading.

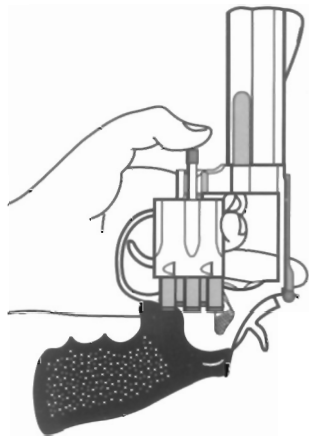
*This is the only mode of operation possible on Smith & Wesson Centennial models, 442, 640 642, and 940.

Maintenance

Your revolver is a precision instrument and to insure reliable function, it is necessary to follow a routine maintenance procedure. After firing your revolver, be sure to unload it before any cleaning or maintenance procedure.

Discharging firearms in poorly ventilated areas, cleaning firearms, or handling ammunition may result in exposure to lead and other substances known to cause birth defects, reproductive harm, and other serious physical injury. Have adequate ventilation at all times. Wash hands thoroughly after exposure.

Unloading (Figure 7)



Rear and Front Sight Adjustment, Cleaning

To make a sight adjustment with adjustable rear sight

- To raise the point of impact, raise the rear sight by turning the elevation screw counterclockwise one or two clicks at a time.
- To lower the point of impact, lower the rear sight by turning the elevation screw clockwise one or two clicks at a time.
- Move the point of impact to the right by turning the windage screw clockwise one or two clicks at a time.
- Move the point of impact to the left by turning the windage screw counterclockwise one or two clicks at a time.

To make adjustments to the adjustable front sight

- Locate the 4 set screws behind the front sight blade and the adjusting wheel just below them.
- To turn wheel, depress the rear of the front sight base and pivot the front sight up.
- To adjust the sight, wheel MUST be positioned so the number of the set screw being turned corresponds with the number shown on the wheel. Lock wheel before turning the set screw.
- The set screw may now be adjusted to raise or lower front sight.
- Be careful NOT to raise the sight to the maximum elevation with the set screw. This will bind the sight and prevent the wheel from turning.

Cleaning

Your revolver should be cleaned by brushing the barrel bore and cylinder charge holes with a good powder-removing solvent and bore brush. Wipe the areas clean with patches or a swab. Using a small brush dipped in solvent, remove all deposits from around the breech of the barrel, face of the cylinder, extractor head and adjacent areas which have been subjected to the action of powder or primer residue. **It is important that the area beneath the extractor be cleaned and kept dry since an accumulation of residue can cause the cylinder to bind or result in a misfire.** Remove any residue on the frame with light brushing and a solvent. After cleaning the entire gun, use a cloth to apply a light coating of high quality gun oil to all external surfaces.

After the initial cleaning, there is usually some residue in both the barrel and cylinder that works out and becomes apparent within 24-48 hours. This can be removed with a bristle brush and a light re-application of powder-removing solvent after which the oil film should be reestablished on all surfaces.

Cleaning is considered essential in order to insure the proper functioning of your handgun.

For additional maintenance, we recommend the services of a qualified gunsmith. Please refer to section entitled "Service".

Transportation and Storage

- Safe firearms transportation and storage is your responsibility.
- When transporting your firearm, be sure it is unloaded and that the cylinder or action is open.
- Never store your firearm loaded.
- Store your unloaded firearm and ammunition separately and securely.
- Safe and secure storage of your firearm is one of the most important responsibilities. It is a full-time responsibility. You must always secure your firearm and ammunition so that they are not accessible to children or other unauthorized persons.
- Smith & Wesson has provided a lock for use with your firearm. There are also a variety of other locks and safe storage containers available in the marketplace which may be appropriate for your particular needs. By purchasing this firearm you have taken on the responsibility of safely securing the firearm at all times and preventing its unauthorized use. It is your personal responsibility to select and use whatever devices or practices that will enable you to safely secure your firearm at all times.
- You must be familiar with all local and state laws regarding the safe storage of your firearm may result in unauthorized access to your firearm by another, as well as exposing you to both criminal and/or civil penalties.
- Protect your firearms from theft.
- Protect your firearms from misuse by untrained, unqualified or incompetent persons.
- Obey all laws relating to the transportation of firearms. Your local police department

should be able to furnish you with information on transporting a firearm legally.

Storage Method

The safe storage of your firearm is your personal responsibility. Only you can determine what devices or practices are appropriate for the safe storage of your firearm. Always make sure that your firearm is not accessible to children or other unauthorized persons. A lock has been provided with the firearm by Smith & Wesson. Consult your local gun shop, hardware store, or local police department for guidance on the variety of other safe storage devices or practices which may be appropriate for your particular needs. Never assume that a "hiding" place is a secure storage method. Others may be aware of your storage location. It is your personal responsibility to use common sense when storing and securing your firearm and to **always** make sure that it is not accessible to children or other unauthorized persons.

When storing, do not encase your firearm in anything that will attract or hold moisture, for example, leather or heavy cloth. Also, do not store guns with a plug inserted in the barrel. This is a contributing factor to moisture accumulation. If your firearm is to be stored for an extended period, the bore, chambers and internal working mechanism should be oiled with acid-free lubricating oil or preservative, and the external working mechanisms, frame, cylinder and barrel should be coated with an anti-rust oil. Before using your firearm again, be sure to clean it. Every time you clean your firearm, check it for signs of wear. If wear is noted, do not use the firearm. Return it to Smith & Wesson for service or have it checked by a qualified gunsmith.

If your firearm will be used or stored in a cold climate, be sure to use an oil that will not thicken at low temperatures.

Should your Smith & Wesson firearm require adjustment, repair or refinishing, it should be returned unloaded to the factory. There is no other way for us to insure that the work will be done in a properly equipped and staffed shop.

Firearms returned to the factory or must be shipped prepaid and marked for the **attention of the service department or service station**. Since we cannot assume responsibility for custom items and accessories such as stocks, special sights and holsters, please remove these before returning your firearm. Enclose a letter stating the model and serial number of your firearm, the full nature of the problems experienced or work desired and your return mailing address (no PO boxes). Adherence to these suggestions will expedite handling of your firearm.

Make sure to record your serial number before shipping. You will need the number in the event you need to call our service to check the status of your handgun.

When your firearm arrives at our service department, its receipt will be acknowledged. The firearm will be inspected carefully, and your letter of instructions will be carefully read.

In case of warranty repairs, work will begin immediately upon receipt and examination of the firearm. In the case of repairs or work not covered by warranty, a quotation covering the total cost of work to be done will be sent to you or the dealer who returned the firearm. Work on your firearm will begin upon receipt of payment. Charges are based upon the cost of parts replaced plus a labor charge for the

time expended on the job. A labor charge for one hour is usually sufficient to cover all but extensive overhaul jobs.

Shipping

In shipping a firearm for repair or service, it is important to comply with all federal state and local laws. The following will help you.

- **Check the cylinder or the magazine and chamber of your firearm to insure that it is unloaded. Do not return any live ammunition.**
- Only federally licensed dealers may mail handguns. Handguns mailed by individuals are subject to confiscation by the United States Postal Service (See Postal Regulation, Title 18, United States Code).
- Individuals who wish to return firearms directly to the factory can do so by shipping via United Parcel Service, which is an independent company unrelated to the U.S. Postal Service. You may wish to obtain insurance coverage for the full value of your firearm, to protect against loss or damage in transit to Smith & Wesson.
- In certain states and under certain regulations, it may be impossible for us to return a firearm to an individual. If this applies in your state or locale, it is strongly recommended that all firearms be shipped to us through a federally licensed dealer.

Service/Shipping/Parts

- Smith & Wesson will refinish all current models of its own manufacture. Repair or replacement of parts are in addition to refinishing price.

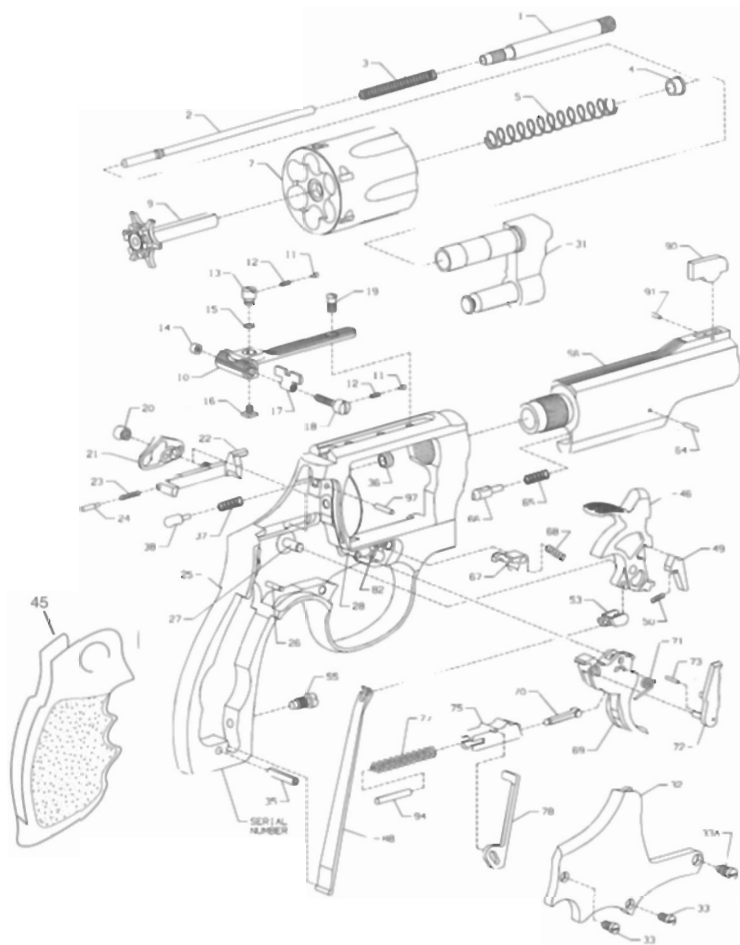
Parts Orders

Smith & Wesson replacement parts are available from your local dealer, Smith & Wesson Warranty Service Stations or directly from the Smith & Wesson Parts Department. To obtain a parts list covering all Smith & Wesson parts, write to: **Smith & Wesson Customer Support, P.O. Box 2208, Springfield, Massachusetts 01102-2208**. In addition, prices for specific parts may be obtained by writing directly to the Smith & Wesson Parts Department, providing them with full description of the part including the part number (refer to the drawing enclosed with your firearm). In ordering parts directly from the factory, please use the procedure outlined below.

1. Order parts by both part number and full description (refer to drawing and parts list, pages 17-20). State any identification number or letter stamped on the part plus the model number and any existing dash number. The model and dash numbers are located on the left side of the gun's frame in the area uncovered when the cylinder is opened (see fig. 1, page 8). Also include the handgun's finish and barrel length.
2. Please include a full return address.

3. Advance payment by check, money order, MasterCard or Visa is required for all parts orders. Purchase orders are accepted only for municipal, state or federal agencies.
4. Orders may be mailed to: Smith & Wesson Customer Support, Smith & Wesson, P.O. Box 2208, Springfield, MA 01102-2208.
5. Telephone orders accepted Monday through Friday 8:00 AM to 8:00 PM EST at 1-800-331-0852 ext. 2904 or FAX: 1-413-747-3317.
6. Allow 2 weeks for delivery.

Typical Smith & Wesson Revolver

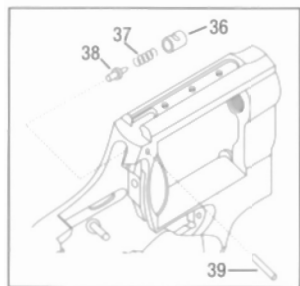


See page 20 for parts descriptions

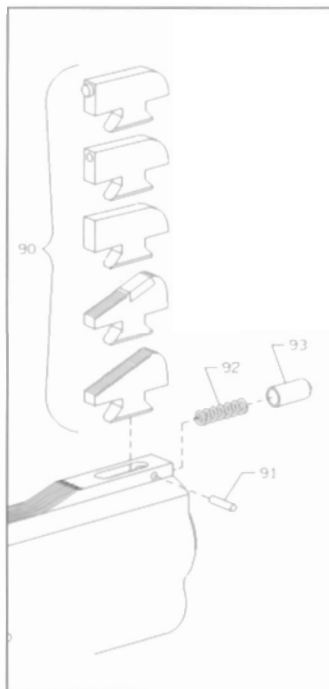
Exploded View—Revolver Variations



**Small "J" Frame
Revolvers**



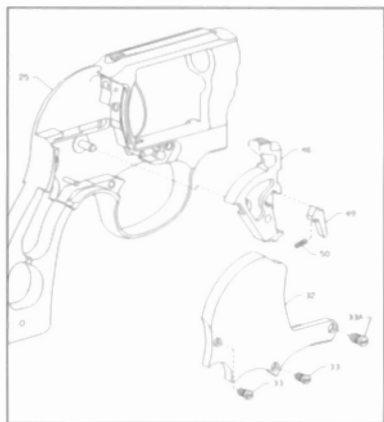
**Rimfire
Revolvers**



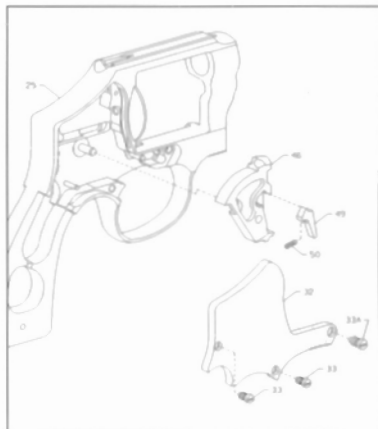
**Interchangeable
Front Sight Ass'y**

See page 20 for parts descriptions

Exploded View—Revolver Variations



**Bodyguard Frame
Revolvers**



**Centennial Frame
Revolvers**

Parts List

| View # | Description | View# | Description |
|--------|--|-------|----------------------------|
| 01 | Extractor Rod | 49 | Sear |
| 02 | Center Pin | 50 | Sear Spring |
| 03 | Center Pin Spring | 53 | Stirrup |
| 04 | Extractor Rod Collar | 55 | Strain Screw |
| 05 | Extractor Spring | 56 | Barrel |
| 07 | Cylinder | 64 | Locking Bolt Pin |
| 09 | Extractor | 65 | Locking Bolt Spring |
| 10 | Rear Sight Leaf | 66 | Locking Bolt |
| 11 | Rear Sight Leaf Plunger | 67 | Cylinder Stop |
| 12 | Rear Sight Leaf Plunger Spring | 68 | Cylinder Stop Spring |
| 13 | Rear Sight Elevation Nut | 69 | Trigger |
| 14 | Rear Sight Windage Nut | 70 | Trigger Lever |
| 15 | Rear Sight Spring Clip | 71 | Hand Torsion Spring |
| 16 | Rear Sight Elevation Stud | 72 | Hand |
| 17 | Rear Sight Slide | 75 | Rebound Slide |
| 18 | Rear Sight Windage Screw | 77 | Rebound Slide Spring |
| 19 | Rear Sight Leaf Screw | 78 | Hammer Block |
| 20 | Thumbpiece Nut | 79 | Mainspring (J Frame) |
| 21 | Thumbpiece | 80 | Mainspring Stirrup |
| 22 | Bolt | 81 | Mainspring Swivel |
| 23 | Bolt Plunger Spring | 82 | Cylinder Stop Stud |
| 24 | Bolt Plunger | 88 | Mainspring |
| 25 | Frame | 90 | Front Sight Blade Set |
| 26 | Rebound Slide Stud | 91 | Front Sight Plunger Pin |
| 27 | Hammer Stud | 92 | Front Sight Plunger Spring |
| 28 | Trigger Stud | 93 | Front Sight Plunger |
| 31 | Yoke | 94 | Trigger Stop Pin |
| 32 | Sideplate | | |
| 33 | Plate Screw, Crowned | | |
| 33A | Yoke Screw | | |
| 35 | Stock Pin | | |
| 36 | Firing Pin Bushing | | |
| 37 | Firing Pin Spring | | |
| 38 | Firing Pin | | |
| 39 | Firing Pin Bushing Pin | | |
| 45 | Grip (left and right grip halves on some models) | | |
| 46 | Hammer | | |

This schematic diagram and parts list conform to current specifications. From time to time improvements are made in all our models. For this reason, the gun which you own may not correspond exactly with the information provided on this sheet. When requesting information or ordering parts for your gun, please provide the serial number, and approximate date of purchase. All current production Smith & Wesson revolvers are manufactured with round butt frames.

Warranty Statement

This warranty is granted by Smith & Wesson, 2100 Roosevelt Avenue, P.O. Box 2208, Springfield, MA 01102-2208. This warranty is effective from the date of purchase after February 1, 1989 and applies to the original owner of any handgun purchased after that date. With respect to such handguns, this warranty supersedes any and all other warranties.

Smith & Wesson handguns are warranted to be free from defects in material and workmanship. Any such defects of which Smith & Wesson receives written notice within one year from the date of purchase by the original owner, will be remedied by Smith & Wesson with out charge within a reasonable time after such notification and delivery of the handgun as provided below.

Warranty claims (in writing) and the gun concerned should be delivered (transportation charges prepaid) to Smith & Wesson's Product Service Department at the above address. In addition, a copy of the bill of sale in the owner's name, or a copy of ATF Form 4473 indicating date of purchase must be included. In order to expedite service, we enclose a complete list of Smith & Wesson's international service centers and their addresses. Warranty claims should state the model and serial number of the gun concerned and the description of the difficulty experienced. It is recommended that shipments be insured by the owner, since Smith & Wesson will accept no responsibility for loss or damage in transit.

Transportation and insurance charges for return to owner will be paid by Smith & Wesson if the claim is covered by the warranty.

Under no circumstances shall Smith & Wesson be responsible for incidental or consequential damages with respect to economic loss or injury or property damage, whether as a result of breach of express or implied warranty, negligence or otherwise. Some states do not allow the exclusion or limitation of incidental or consequential damages, so the above limitation or exclusion may not apply to you.

Smith & Wesson will not be responsible for defects resulting from careless handling, unauthorized adjustments or modifications, defective or improper ammunition, corrosion, neglect, abuse, ordinary wear and tear, or unreasonable use.

This warranty gives you specific legal rights. You may also have other rights that vary from state to state.

Extended Service Policy

Even after the warranty period has expired, Smith & Wesson will repair, without charge, any handgun purchased by the original owner on or after February 1, 1989 that is found to have defect in material or workmanship. Eligibility for this service policy requires returning the Product Registration Card within thirty days of purchase. A copy of the bill of sale in the owner's name and the sales receipt should accompany the handgun. When that information is received, the original owner will be qualified for this policy for the handgun identified by serial number.

This policy covers corrections of original defects in material and workmanship; it does not include the handgun's finish, grips, magazines or sights. The policy also does not include repairs caused by careless handling; unauthorized adjustment or modification; defective ammunition or ammunition not recommended in the Smith & Wesson Safety, Instruction and Parts Manual; corrosion; abuse; neglect; unreasonable use or ordinary wear and tear. Smith & Wesson reserves the right to determine what constitutes ordinary wear and tear. However, we can rebuild handguns that have experienced extreme usage or are beyond their normal useful life at a fee that will be quoted to the owner.

This policy is in addition to and not an extension of the Smith & Wesson Limited Warranty. The only consideration we ask of you to become eligible for this Extended Service Policy is that you return the completed Product Registration Card, containing valuable data that will help us to serve you better.

If your Smith & Wesson product has a defect in material or workmanship, call our service department at **1-800-331-0852, ext. 2904.**

Authorized Service Stations/International

International Service Centers

• AUSTRALIA

Grycol International Pty. Ltd.
344 Botany Road
Alexandria, N.S.W.
Australia 2015
TEL: 61-2-698-8725
FAX: 61-2-319-0732

Grycol Queensland
30 Edgar Street
Bowen Hills, Queensland, 4006
TEL: 61-7-3252-8212
FAX: 61-7-3252-1515

• AUSTRIA

Franz Sarnitz, GmbH
Jochen Rindt Strasse 15
P.O. Box 111
Osterleitengasse 5
A-1239 Wien, Austria
TEL: 43-1-617-3939
FAX: 43-1-617-3939-11

• BELGIUM

Ets. Cajot S.P.R.L.
Quai du Roi Albert 33
B-4020 Bressoux-Liege
Belgium
TEL: 32-4343-8833
FAX: 32-4343-8529

S.P.R.L. Jacques Nicolay
Chaussee de Chatelet, 64
B-6060 Gilly
Belgium
TEL: 32-71-42-1551
FAX: 31-71-42-2782

• CANADA

M.D. Charlton, Co., Ltd.
Box 153
Brentwood Bay, B.C.
Canada V0S 1A0
TEL: (250) 652-5266
FAX: (250) 652-4700

Wortner Gun Works, Ltd.
433 Queen Street
Box 411
Chatham, Ontario
Canada N7M 5K5
TEL: (519) 352-0924

• ECUADOR

M.G. Suber & Associates
Amazonas 477
Oficina 1008
P.O. Box 17-11 06459
Quito, Ecuador
TEL: 593-229-9022
FAX: 593-243-0752

• FINLAND

Patria Lapua Ltd.
Patruunatehtaantie 100
62100 Lapua, Finland
TEL: 358-6-4310111
FAX: 358-6-4310317

• FRANCE

AKAH France
60, boulevard Jean-Baptiste
Lebas
F-59000 Lille, France
TEL: 33-20-52-27-36
FAX: 33-20-88-25-25

• GERMANY

Albrecht Kind GmbH & Co.
Hermann-Kind-Strasse 18-20
51645 Gummersbach, Hunstlig
Federal Republic of Germany
TEL: 49-2261-7050
FAX: 49-2261-73540

Wischo GmbH & Co. KG
Dresdener Strasse 30
P.O. Box 3680
91024 Erlangen
TEL: 49-9131-30090
FAX: 49-9131-300930

• ISRAEL

L.H.B. Ltd.
P.O. Box 36532
Tel-Aviv 61364, Israel
TEL: 972-3-639-0562
FAX: 972-3-639-5364

• ITALY

Bignami SpA
Via Lahn 1
39040 ORA (Bolzano)
Italy
TEL: 39-471-810-644
FAX: 39-471-810-899

• NETHERLANDS

Handelsonderneming
J. Milkx B.V.
Postbus 2
NL- 9700 AA Groningen
Netherlands
TEL: 31-50-3180948
FAX: 31-50-3143820

Authorized Service Stations/International

• PANAMA

Casa SIU S.A.
Avenue Pablo Arosemena
Apartado 6343
Panama 5, Rep. of Panama
TEL: 507-2-60-3716
FAX: 507-2-60-4778

• PUERTO RICO

R.L. Armeria & Exchange
Intendente Ramirez No. 9
Caguas, PR 00725
TEL: (787) 743-9446
FAX: (787) 743-2427

• SPAIN

Borchers Sa
Industrial Dea
Apartado 22B
48300 Guernica
Spain
TEL: 344-6252029
FAX: 344-6252366

• SWEDEN

Lexne Vapen AB
P.O. Box 3036
S-163 03 Spanga
Sweden
TEL: 46-8-361-990
FAX: 46-8-368-560

• SWITZERLAND

Grunig & Elmiger AG
Industriestrasse 22
6102 Malters
Switzerland
TEL: 41-41-499-90-40
FAX: 41-41-499-90-49

• UNITED KINGDOM

Parker-Hale Ltd.
Golden Hillock Road
B11-2PZ Birmingham
United Kingdom
TEL: 44-1-21-766-6996
FAX: 44-1-21-772-0129

• URUGUAY

Washington Chiesa
Francisco Gomez 780
Montevideo,
Uruguay
TEL: 598-2-38-35-48
FAX: 598-2-235-5580



Smith & Wesson®

2100 Roosevelt Avenue, P. O. Box 2208, Springfield, MA 01102-2208

Tel: 1-800-331-0852 • Internet: www.smith-wesson.com

Printed in U.S.A. #SW03648 REV 9/98
