



Smith & Wesson

**CENTERFIRE PISTOLS WITH
FRAME-MOUNTED DECOCKING LEVER**



SAFETY, INSTRUCTION & PARTS MANUAL
Models 5924, 5926, 6924, 6926,
4526, 4536, 1026, 1076

WARNING
**TO AVOID UNINTENTIONAL DISCHARGE,
KEEP FINGER OFF TRIGGER WHILE DE-
COCKING PISTOL.**

**SMITH & WESSON CENTERFIRE PISTOLS
WITH FRAME-MOUNTED DECOCKING LEVER
SAFETY, INSTRUCTION & PARTS MANUAL**

**READ THESE INSTRUCTIONS
AND WARNINGS CAREFULLY,
BE SURE YOU UNDERSTAND
THESE INSTRUCTIONS AND WARNINGS
BEFORE USING THIS FIREARM.**

This SAFETY, INSTRUCTION & PARTS MANUAL should always accompany this firearm and be transferred with it upon change of ownership or when the firearm is loaned or presented to another person. A copy of the SAFETY, INSTRUCTION & PARTS MANUAL is available FREE upon request from:

**Smith & Wesson
Product Service Department
2100 Roosevelt Avenue
Springfield, MA 01102**

SAFETY INSTRUCTIONS AND WARNINGS

Smith & Wesson has designed the most reliable firearms available. Smith & Wesson firearms incorporate many safety features; however, safe gun handling is **your** personal responsibility. Firearms are dangerous. Firearms can cause serious injury and death. Safety must be the prime consideration of anyone who handles firearms. Always treat a firearm as though it were loaded. Always keep the muzzle pointed in a safe direction.

In owning a firearm, you must undertake full-time responsibility for your firearm's safety and security. You must protect yourself and all others against injury from the firearm. In particular, you must secure firearms from children.

Do not allow any alteration or replacement of parts in your Smith & Wesson firearm unless performed by a qualified gunsmith using genuine Smith & Wesson parts. If you do otherwise, improper functioning of your firearm and serious injury may result.

WARNING:

Warnings and instructions about the use of some Smith & Wesson component parts or accessories may be described in literature accompanying parts. In other cases, instructions specifying use of a part only in a particular handgun may actually be marked on the component part. Read and carefully follow the warnings and

instructions. Such warnings and instructions are provided to assure the safe functioning of the handgun. Failure to heed them may result in improper functioning and serious injury.

Any Smith & Wesson firearm is a precision instrument designed to function reliably with proper care and knowledgeable use. You must understand the safe operation and use of your Smith & Wesson firearm. Read and follow these instructions carefully. Do not use your firearm unless you fully understand these instructions and the safe operation of your firearm.

Many safety features are incorporated in your firearm. For your safety and the safety of others, do not rely on mechanical features alone. Only your safe gun-handling habits will ensure the safe use of your firearm. This is your responsibility. Accidents do not just happen. Accidents are the result of violating the rules of safe gun handling and common sense.

Insure the safe use of firearms. Follow these essential safety instructions and warnings.

BASIC RULES

- **NEVER** point a firearm at anyone or anything you do not intend to shoot.
- Before handling any firearm, understand its operation.
- **ALWAYS** have your firearm pointed in a safe direction.
- Keep your firearm unloaded when not in use.
- Treat every firearm as if it were loaded.
- Never pass your firearm to another person until the cylinder or action is open and you visually check that it is unloaded.
- Place your finger inside the trigger guard only when you are ready to fire.
- If you must carry a loaded firearm, **ALWAYS** carry it with the muzzle pointing in a safe direction. Never carry or store firearms with the hammer in the full cocked position.
- **DO NOT** allow a firearm to be used by individuals who do not understand its safe operation and the rules of safe gun-handling.
- **BE SURE** all accessories, such as holsters and grips, are compatible with the firearm and that the accessories do not interfere with safe operation.
- When transporting your firearm, be sure your firearm is unloaded and that the cylinder or action is open.
- Store your firearm unloaded. Safe and secure storage is one of your most important responsibilities.
- Store your unloaded firearm and ammunition separately and in places inaccessible to children and unauthorized persons.
- Be sure of your target and what is beyond your target.

PREPARATION FOR FIRING

- Wear safety glasses and ear protection whether indoors or out.
- Select a place to shoot which has a safe backstop, is free from obstructions and water surfaces which cause ricochets.
- Always be aware of other people so that persons cannot accidentally walk into the line of fire.
- Position the shooter and all others so that they are not within an area where they may be struck by particle-spitting from a revolver or by ejected cases from other types of firearms.
- Keep fingers and other parts of your body away from the muzzle and slide.
- When firing on a target range, be alert and follow the range officer's commands.
- Before anyone is allowed forward of the firing position, be sure that all cylinders and actions of firearms are open, that chambers are clear of cartridges, magazines are removed, and that firearms are pointing in a safe direction.

- Never use alcoholic beverages or other drugs before or during shooting.
- Be alert at all times. Never shoot if you are tired, cold or impaired in any way.
- Never cross obstacles such as fences or streams with a loaded firearm.
- If you are carrying a loaded firearm in the field, keep the muzzle pointed in a safe direction.
- Think before shooting.

WARNING: Never use ammunition where the pressure levels exceed industry standards. Smith & Wesson pistols are manufactured from high quality materials (aluminum or steel alloys). These frames will provide extended service life. However, + P + cartridges—whose pressures often exceed even factory proof-test levels—should never be used in these models. All warranties, express or implied, are voided and Smith & Wesson will not be liable for property damage or personal injury and consequential damages, if this ammunition is used in these model centerfire pistols.

AMMUNITION

- A firearm and ammunition are a system. Their performance is closely related.
- Your firearm has been designed for ammunition of a specific type and caliber; do not alter the barrel or chamber of your gun.
- Use only ammunition specifically recommended by Smith & Wesson for your firearm. Never mix ammunition. See chart on page 5 for recommended ammunition.
- Use only commercially manufactured ammunition.
- Never use a cartridge not specifically designated for use in your firearm. Excessive pressure can damage or even blow up any firearm.
- Periodically check the barrel breech, slide, and frame areas for erosion, cracks, or other signs of excessive wear.
- Never use non-standard or reloaded ammunition.
- If your firearm fails to fire when the hammer falls (misfires), keep the firearm pointed in a safe direction, remove your finger from the trigger, do not place your hand around the ejection port, wait 10 seconds, remove the cartridge from the chamber and dispose of it properly.
- If you have heard an unusual sound or felt an unusual recoil on firing, stop firing, wait 10 seconds, unload the firearm, and examine the barrel bore for obstructions.
- Make sure your barrel is clear and free of obstructions. If you see an obstruction, return your firearm to Smith & Wesson or take it to a qualified gunsmith. Never fire a firearm with an obstructed barrel.

SMITH & WESSON CENTERFIRE PISTOLS WITH FRAME-MOUNTED DECOCKING LEVER AMMUNITION CHART

Model	9mm Parabellum	.45 ACP	10mm
5924	Yes		
5926	Yes		
6924	Yes		
6926	Yes		
4526		Yes	
4536		Yes	
4576		Yes	
1026			Yes
1076			Yes

**CENTERFIRE PISTOL
WITH FRAME-MOUNTED DECOCKING LEVER**



**CENTERFIRE PISTOL
WITH FRAME-MOUNTED DECOCKING LEVER**



INSPECTING YOUR PISTOL

The Smith & Wesson Centerfire Pistol with Frame-mounted Decocking Lever allows the user to **manually** lower the hammer from the single-action (or fully-cocked) position. This feature replaces the slide-mounted decocking lever or manual safety; however, unlike the slide-mounted mechanism which can be left in the "safe" position, the frame-mounted decocking lever does **not** automatically decock the hammer each time the slide travels forward. The hammer of this pistol remains in the single-action (or fully-cocked) position each time the slide is released — such as after loading. The hammer returns to the single-action position after each shot.

With a magazine fully inserted in the pistol and with a cartridge in the barrel chamber, this pistol can be fired either double-action or single-

action simply by pulling the trigger. It is a "double-action" firing when the hammer starts its movement from the "at rest" position, fully down in the slide or when the hammer starts from the half-cock notch, a position not fully down. In "double-action" firing, the action of pulling the trigger moves the hammer rearward and then allows the hammer to fall forward firing the cartridge. A "single-action" firing occurs when the trigger is pulled while the hammer is in the fully-cocked position.

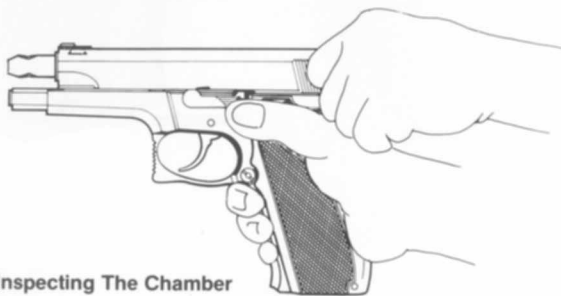
When you inspect your pistol, you should first check for yourself to insure that it is unloaded. To do this, grasp the pistol with your finger off the trigger and outside the trigger guard, point the muzzle in a safe direction depress the decocking lever, depress the magazine release,

and remove the magazine. With the muzzle still pointing in a safe direction, grasp the serrated sides of the slide from the rear with the thumb and fingers as shown in Figure 1, and briskly draw the slide fully rearward in order to extract any cartridge from the barrel chamber and clear it from the pistol. Do not obstruct the ejection port because doing so can interfere with ejection of a cartridge and thereby creates the risk of exploding an unchambered cartridge and possible injury. In order to lock the slide in the open position, allow the slide to move slightly forward from the rearmost position while pressing upward on the slide stop. You are now able to safely check the barrel chamber and bore visually for any obstructions. You must follow this procedure every time your pistol is inspected, cleaned, handed to another person, transported or stored. Unload the magazine by holding it with the bullet end of the cartridge pointing away from you and pressing each cartridge forward and out of the magazine.

Your pistol has been treated with either a preservative or oil to protect it against corrosion. Before use, oil should be removed from exposed surfaces. The barrel bore and chamber should be wiped using a clean patch or swab. Care should be taken to prevent foreign matter, including dirt and lint, from entering the mechanism and being trapped by oil.

Familiarize yourself with the decocking lever on your pistol. The decocking lever allows you to safely lower the hammer from the single-action or (fully-cocked) position. The decocking lever will not lower the hammer from the half-cock position to the "at-rest" position fully down in the slide.

NOTE: When operating the decocking lever, your finger should be kept off the trigger and outside the trigger guard.



(Figure 1)
Clearing And Inspecting The Chamber

LOADING

Do not load the pistol until you are ready to use it. Keep your finger outside the trigger guard until you are ready to fire.

WARNING:

Smith & Wesson centerfire pistols are designed to disengage the trigger linkage, and thereby prevent the trigger from firing the pistol, when the magazine is removed from the pistol. After inserting a magazine, always test to make sure it is locked in place by applying some removal pressure to the exposed portion of the magazine butt plate.

For safe and reliable performance, use only those Smith & Wesson magazines specifically manufactured for your particular model and caliber of pistol. Follow the instructions in this Manual and any specific instructions which may be marked onto, or accompany, a magazine. Failure to use only those Smith & Wesson magazines specified for your particular model and caliber of pistol may result in the malfunction of your pistol.

Load the magazine by pressing a cartridge head (rear of cartridge) downward on the forward portion of the magazine follower (or downward on the case of the previously-loaded cartridge) and sliding the cartridge fully under the lips of the magazine until the cartridge head is against the rear wall of the magazine. Repeat the procedure for the number of cartridges you wish to load, up to the magazine capacity. Do not attempt to load your magazine with more than the specified

number of cartridges because doing so can cause a feeding failure.

Inspect the pistol as previously described.

Hold the pistol in one hand with the muzzle pointing in a safe direction and with your finger off the trigger and outside the trigger guard. Insert the loaded magazine into the magazine well of the pistol until it is locked in place. To make sure that the magazine is fully and securely inserted, apply some removal pressure to the exposed portion of the magazine butt plate. Press down on the slide stop to release the slide and allow it to carry fully forward. This strips a cartridge from the magazine and seats it in the chamber of the barrel. Push down firmly on the decocking lever to lower the hammer into the half cock notch.

WARNING:

This pistol can now be fired simply by pulling the trigger fully to the rear.

If you wish to restore the magazine in your pistol to its full capacity, depress the magazine release and remove the magazine from the pistol. Remember that there is a round in the chamber; therefore, the weapon should be holstered or safely secured during this process. Load one cartridge into the magazine to replace the one which was chambered when you allowed the slide to carry forward. Reinsert the loaded magazine into the magazine well of the pistol until it is locked in place. To make sure that the

magazine is again fully and securely inserted, apply some removal pressure to the exposed portion of the magazine butt plate.

Your pistol is now fully loaded. The hammer is in the half-cock position and the trigger is forward. Your pistol is in a safe condition to be holstered and carried. The pistol can be fired in this condition by simply pulling the trigger fully to the rear. The hammer is not down all the way in the "at rest" position because the half-cock notch of the hammer has been engaged by the sear. This engagement will occur after the frame-mounted decocking lever has been used to lower the hammer from the single-action (or fully-cocked) position. The hammer of this pistol can only be placed into a fully-down position by pulling the trigger after you have inserted an **empty** magazine and made absolutely sure that the chamber is empty.

Never holster, carry or store your pistol with the hammer in the fully cocked position.

Remember to keep your pistol pointed in a safe direction under all conditions and always keep your finger off the trigger and outside the trigger guard until ready to fire. Never leave a loaded firearm unattended.

FIRING

Keep the muzzle pointed in a safe direction and your finger outside the trigger guard until you are ready to fire. The first shot, either with the hammer in the "at rest" or in the "half-cock" position, will be fired in the double-action mode. While holding the grip firmly, pull the trigger fully to the rear. As the trigger is drawn fully to the rear, the hammer moves rearward and is released to strike the firing pin. Upon firing the slide moves rearward thereby extracting and ejecting the spent cartridge case and rotating the hammer to the fully cocked position. The slide then returns forward feeding the next cartridge from the magazine to the barrel chamber. The hammer remains cocked and the trigger is in the rearward position so that subsequent shots will be fired in the single-action mode. This sequence can be repeated until the last round has been fired at which time the magazine follower exerts upward pressure on the slide stop causing it to engage the slide and to hold it in the open position.

WARNING:

Single-action firing requires significantly less trigger pull and trigger travel than double-action firing.

WARNING: Upon firing the pistol, or releasing the slide from the slide stop, the slide moves rearward or forward with significant force and speed. To avoid injury, be sure no part of your body is in the path of the slide's travel.

DECOCKING

If you decide to suspend firing, keep the pistol pointed in a safe direction, remove your finger from the trigger guard, and push down firmly on the decocking lever thereby lowering the hammer to the half cock notch. The trigger will be released to its forward position. The pistol may now be holstered and carried safely.

CLEARING MISFIRES

If, during firing, a cartridge fails to fire, the pistol will remain in the double action mode. If the situation permits, the trigger may be pulled once or twice more. If ignition still fails, the chamber must be manually cleared. Wait ten seconds while keeping the muzzle pointed in a safe direction. Grasp the serrated sides of the slide from the rear and briskly pull the slide fully rearward to eject the misfired round. Do not obstruct the ejection port, and do not attempt to catch the round by placing your hand over the ejection port. Also, remember that any time you release the slide while a magazine containing cartridges is in the pistol, you will have reloaded the chamber.

UNLOADING

Point the muzzle in a safe direction. Depress the decocking lever to lower the hammer if necessary. Depress the magazine release, and remove the magazine. With the muzzle still pointing in a safe direction, and with your finger off the trigger and outside the trigger guard, grasp the serrated sides of the slide from the rear with the thumb and fingers, and briskly draw the slide fully rearward in order to extract any cartridge from the barrel chamber and clear it from the pistol. Do not obstruct the ejection port because doing so can interfere with ejection of a cartridge and thereby creates the risk of exploding an unchambered cartridge and possible injury. Visually check the barrel chamber to be sure it is empty.

Unload the magazine by holding it with the bullet end of the cartridge pointing away from you and pressing each cartridge forward and out of the magazine.

SIGHT ADJUSTMENT

Certain model Smith & Wesson Pistols are equipped with a **Fixed Rear Sight** that is adjustable for windage only. To adjust, move the Rear Sight in the direction you wish the group to move on the target. For example, if the group should move to the right, move the Rear Sight to the right. Use a brass or plastic drift or punch to prevent marring the Rear Sight. If the Rear Sight has a set screw, loosen the set screw prior to moving the Rear Sight. Tighten the set screw after the sight has been adjusted to the desired position.

Certain model Smith & Wesson Pistols are equipped with a **screw type Rear Sight** adjustable for elevation and windage.

ADJUSTING FOR ELEVATION

Rotate the Adjusting Screw installed in the top of the Rear Sight body clockwise to lower the Rear Sight or counterclockwise to raise the Rear Sight. (Raising Rear Sight will raise the group, etc.)

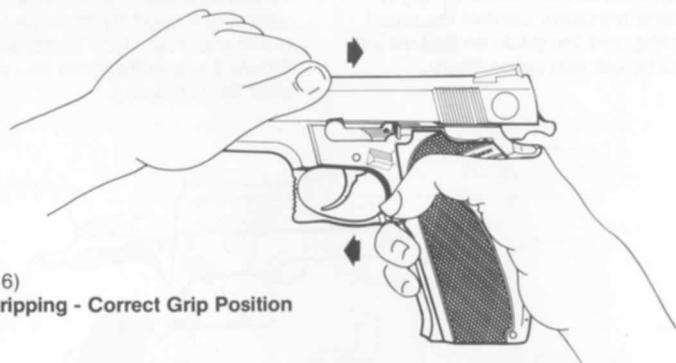
ADJUSTING FOR WINDAGE

Rotate the Adjusting Screw installed in the right side of Rear Sight body clockwise to move the Rear Sight Blade to the right or counterclockwise to move it to the left. (Moving Rear Sight to the right will move the group to the right, etc.)

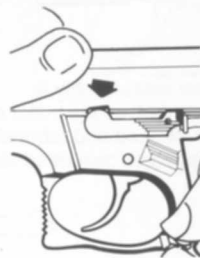
FIELD STRIPPING - DISASSEMBLY

Remove the magazine by depressing the magazine release button and inspect and clear the chamber. Firmly grasp the frame and slide with the left hand. While holding with the left hand, position the right hand on the grip as shown in Figure 6 keeping your fingers outside of the trigger guard and off the trigger.

Apply pressure with the left and right hands in opposite directions until the slide stop notch in the left side of the slide is aligned with the forward, rounded portion of the slide stop as shown in Figure 7. Press inward on the slide stop pin from the opposite side of the frame and remove the slide stop.



(Figure 6)
Field Stripping - Correct Grip Position

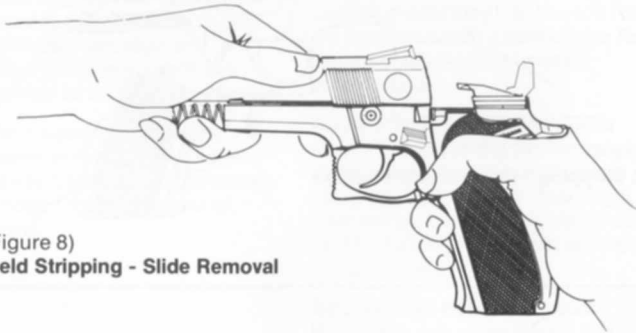


(Figure 7)
Field Stripping -
Aligning Stop Notch & Slide Stop

FIELD STRIPPING - DISASSEMBLY (con't.)

Allow the slide to move forward until it is aligned with the frame in its normal closed position. Depress the decocking lever which will lower the hammer to the half cock notch. Pull the slide forward off the frame while grasping the recoil spring assembly and slide together as shown in Figure 8. Remove the recoil spring assembly by depressing the spring slightly and releasing it carefully from the small radial undercut in the barrel lug. Figure 9 shows the parts you will have after field stripping.

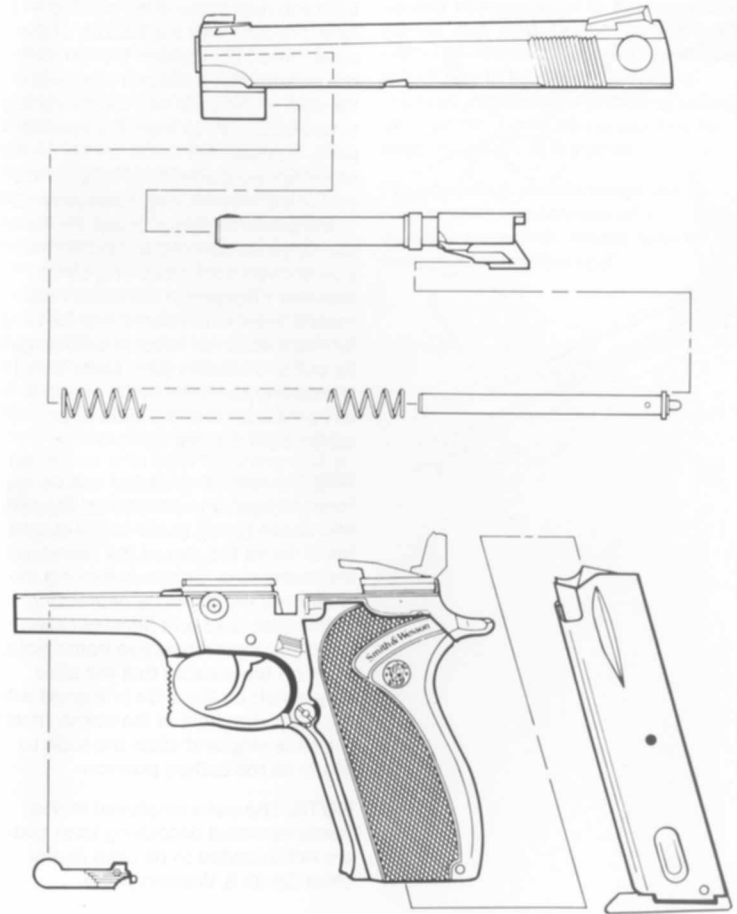
WARNING: The Recoil Spring is under pressure. Control the recoil spring and the guide so that they do not fly out and cause injury.



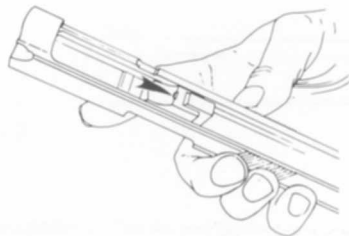
(Figure 8)
Field Stripping - Slide Removal

NOTE:
No further disassembly is recommended, as the pistol may be properly cleaned and lubricated when field-stripped as described above.

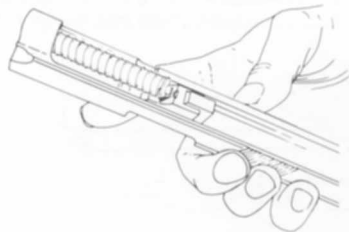
(Figure 9)
Field Strip Breakdown



FIELD STRIPPING - REASSEMBLY



With the rear of the slide pointed in a safe direction and the bottom of the slide turned up, replace the barrel in the slide so the muzzle is flush with the end of the slide and the barrel lug is turned up (away from the ejection port). Replace the recoil spring on the recoil spring guide. Insert the spring end of the recoil spring guide assembly in the guide housing. Grasp the recoil spring guide bushing and pull it toward you enough so the bushing can be securely engaged in the small radial machine cut in the barrel lug. Be careful that it does not become disengaged, fly out and cause injury. Make sure it is properly centered in the cut as it will protrude from the slide after assembly if it is not centered.



With the hammer in the at rest or forward position and holding the slide and recoil spring guide firmly in one hand, move the rear of the slide onto the frame rails. Continue moving the slide onto the frame by depressing the ejector lever and firing pin safety lever into their respective frame slots. Position the slide so that the slide stop notch on the slide is aligned with the slide stop hole in the frame. Insert the slide stop and allow the slide to return to the battery position.

NOTE: The parts employed in this frame mounted decocking lever pistol are not intended to be used in any other Smith & Wesson pistol.

MAINTENANCE

Your pistol is a precision instrument and to insure reliable function, it is necessary to follow a routine maintenance procedure. After firing your pistol, be sure to unload it following the procedure outlined in the section entitled "Unloading" on page 14 before any cleaning or maintenance procedure. Your pistol should be cleaned by brushing the barrel bore and chamber with a good powder-removing solvent and bore brush. Wipe the areas clean with patches or a swab. Using a small brush dipped in solvent, remove all deposits from around the breech of the barrel, and chamber, extractor and adjacent areas which have been subjected to the action of powder or primer residue. Remove any residue on the frame with light brushing and a solvent. After cleaning the entire gun, use a cloth to apply a light coating of high quality gun oil to all external surfaces and wipe clean.

After the initial cleaning, there is usually some residue in the barrel that works out and becomes apparent within 24-48 hours. This can be removed with a bristle brush and a light re-application of powder-removing solvent after which the oil film should be re-established on all surfaces.

For additional maintenance, we recommend the services of a qualified gunsmith. Please refer to section entitled "Service".

TRANSPORTATION AND STORAGE

- Safe firearms transportation and storage are your responsibility.
- When transporting your firearm, whether in cars, trucks, boats, planes or other vehicles, be sure your firearm is unloaded and that the cylinder or action is open.
- Never store your firearm in a loaded condition.
- Store your unloaded firearm and ammunition in places inaccessible to children.
- Store your unloaded firearm and ammunition separately and securely.
- Protect your firearms from theft.
- Protect your firearms from misuse by untrained, unqualified or incompetent persons.
- Obey all laws relating to the transportation of firearms.

STORAGE METHOD

When storing, do not encase your firearm in anything which will attract or hold moisture, for example, leather or heavy cloth. Also, do not store guns with a plug inserted in the barrel for this is a contributing factor to moisture accumulation. If your firearm is to be stored for an extended period, the bore, chambers and internal working mechanism should be oiled with an acid-free lubricating oil or preservative, and the external working mechanisms, frame, barrel and cylinder should be coated with an antirust oil. Before using your firearm again, be sure to clean it. Every time you clean your firearm, check it for signs of wear. If wear is noted, do not use the firearm. Return it to Smith & Wesson for service or have it checked by a qualified gunsmith.

If your firearm will be used or stored in a cold climate, be sure to use an oil which will not congeal at low temperatures.

SERVICE

Should your Smith & Wesson firearm require adjustment, repair or refinishing, it should be returned unloaded to the factory or to an authorized Smith & Wesson Warranty Service Station. Please consult the list enclosed in the box to find the address of the nearest Service Station.

Firearms returned to the factory or Warranty Service Station must be shipped prepaid and marked for the **Attention of the Service Department or Service Station**. Since we cannot assume responsibility for custom items and accessories such as stocks, special sights and holsters, please remove these before returning your firearm. Enclose a letter stating the model and serial number of your firearm and the full nature of the problems experienced or work desired. Adherence to these suggestions will expedite handling of your firearm.

When your firearm arrives at our Service Department, its receipt will be acknowledged. The firearm will be inspected carefully, and your letter of instructions will be carefully read.

In the case of warranty repairs, work will begin immediately upon receipt and examination of the firearm. In the case of repairs or work not covered by warranty, a quotation covering the total cost of work to be done will be sent to you or to the dealer who returned the firearm. Work on your firearm will begin upon receipt of payment. Charges are based upon the cost of parts replaced plus a labor charge for the time expended on the job. A labor charge for one hour is usually sufficient to cover all but extensive overhaul jobs.

NOTE: For warranty repairs, a copy of the original proof of purchase must accompany the firearm.

SERVICE (con't.)

In shipping a firearm for repair or service, it is important to comply with all federal, state and local laws. The following will help you.

- Check the cylinder or magazine and chamber of your firearm to insure that it is unloaded. Do not return any live ammunition.
- Only federally licensed dealers may mail handguns. Handguns mailed by individuals are subject to confiscation by the United States Post Office (See Postal Regulation, Title 18, United States Code).
- Individuals who wish to return firearms directly to the factory or to an authorized Smith & Wesson Warranty Service Station can do so by shipping via United Parcel Service which is an independent company unrelated to the U.S. Post Office.
- In certain states and under certain regulations, it may be impossible for us to return a firearm to an individual. If this applies in your state and locale, it is strongly recommended that all firearms be shipped to us through a federally licensed dealer.
- When returning a centerfire pistol, be sure to return all magazines because they are directly related to the proper function of the gun.
- Smith & Wesson will refinish all models produced after 1961 of its own manufacture. Repair or replacements of parts are in addition to refinishing price.

PARTS ORDERS

Smith & Wesson replacement parts are available from your local dealer, Smith & Wesson Warranty Service Stations or directly from the Smith & Wesson Parts Department. Prices for specific parts may be obtained by writing or telephoning directly to the Smith & Wesson Parts Department providing them with the handgun model, finish, barrel length and a full description of the part including the view number (refer to exploded view drawing and parts lists on pages 24, and 25).

WARNING:

The model number, and the revision number which may follow it, are stamped on Smith & Wesson handguns manufactured since 1958 to identify certain features and component parts. Parts may vary between models or revision numbers, and parts should not be assumed to be interchangeable between handguns.

Make sure that all replacement parts, ammunition, magazines, and accessories are compatible with your handgun.

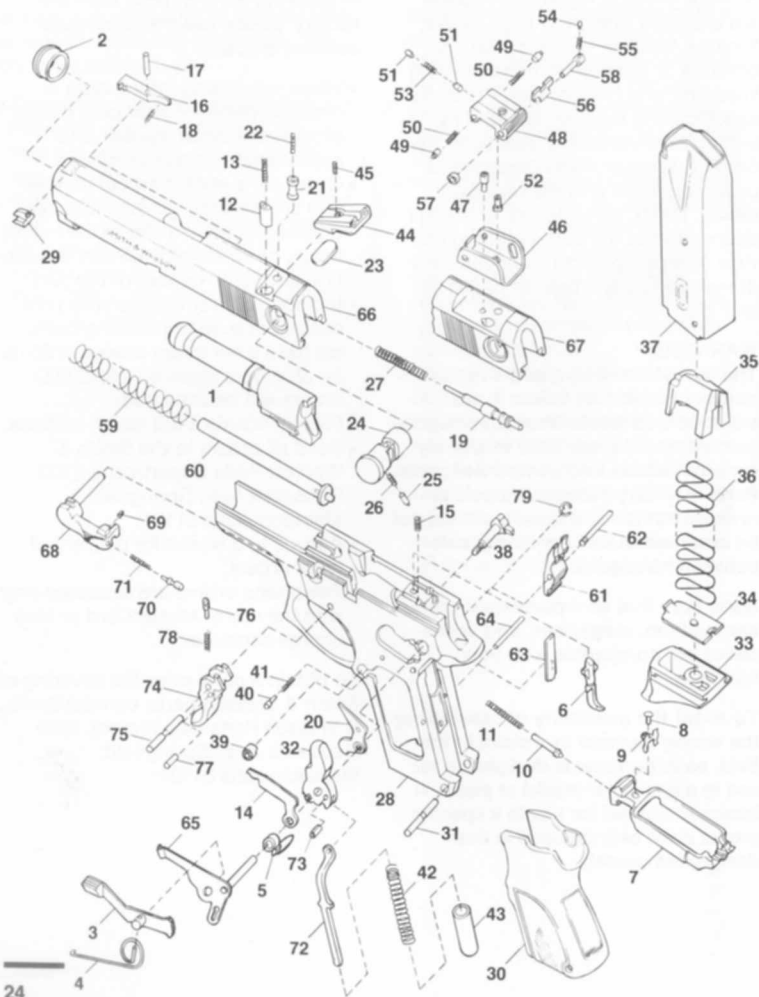
To avoid the possibility of assembling the wrong hammer in a pistol in the field, each hammer is designated for use in a particular model of pistol. A hammer marked for use in a specific model must only be used in that designated model.

In ordering parts directly from the factory, please use the procedure outlined below.

- When requesting information or ordering parts for your gun, please provide the serial number and approximate date of purchase.
- Order parts stating model number and any existing revision number (located on the left side of the frame), finish, barrel length, full part description and view number of the part.
- Include your remittance with your order. Because of handling costs, we have a minimum charge of \$5.00 on all orders received. No C.O.D. orders will be accepted.
- Please include a full return address.
- Send all orders to the Smith & Wesson Parts Department, 2100 Roosevelt Ave., Springfield, Massachusetts 01101.
- Allow 2 to 3 weeks for delivery of parts orders.
- Telephone orders are accepted only with the use of MasterCard or Visa charge accounts.

To obtain a parts price list covering all Smith & Wesson parts, contact Smith & Wesson Parts Department, 2100 Roosevelt Ave., Springfield, Massachusetts 01101.

**TYPICAL SMITH & WESSON
CENTERFIRE PISTOL
WITH FRAME-MOUNTED DECOCKING LEVER**



**S&W CENTERFIRE PISTOLS
WITH FRAME-MOUNTED DECOCKING LEVER
PARTS LIST**

VIEW #	DESCRIPTION	VIEW #	DESCRIPTION
1	Barrel	42	Mainspring
2	Barrel Bushing	43	Mainspring Plunger
3	Decocking Lever Assembly	44	Rear Sight (Fixed)
4	Decocking Lever Spring	45	Rear Sight Screw
5	Decocking Pawl	46	Rear Sight Assembly (Adjustable)
6	Disconnecter	47	Rear Sight Base
7	Drawbar	48	Rear Sight Base Screw
8	Trigger Play Spring Rivet	49	Rear Sight Body
9	Trigger Spring	50	Rear Sight Body Plunger
10	Drawbar Plunger	51	Rear Sight Body Plunger Spring
11	Drawbar Plunger Spring	52	Rear Sight Elevation Plunger
12	Ejector Depressor Plunger	53	Rear Sight Elevation Screw
13	Ejector Depressor Plunger Spring	54	Rear Sight Elevation Spring
14	Ejector & Magazine Depressor	55	Rear Sight Plunger
15	Ejector Spring	56	Rear Sight Plunger Spring
16	Extractor	57	Rear Sight Slide
17	Extractor Pin	58	Rear Sight Windage Nut
18	Extractor Spring	59	Rear Sight Windage Screw
19	Firing Pin	60	Recoil Spring
20	Firing Pin Safety Lever	61	Recoil Spring Guide Assembly
21	Firing Pin Safety Lever Plunger	62	Sear
22	Firing Pin Safety Lever Plunger Spring	63	Sear Pin
23	Firing Pin Safety Lever Spg. Ret.	64	Sear Spring
24	Firing Pin Retainer	65	Sear Spring Retainer Pin
25	Firing Pin Retainer Plunger	66	Sideplate Assembly (Decocking Lever)
26	Firing Pin Retainer Plunger Spring	67	Slide Assembly (Fixed)
27	Firing Pin Spring	68	Slide Assembly (Adjustable)
28	Frame	69	Slide/Barrel Bushing
29	Front Sight	70	Slide Stop
30	Grip	71	Slide Stop Plunger
31	Grip Pin	72	Slide Stop Plunger Spring
32	Hammer Assembly (Decocking Lever)	73	Stirrup
33	Magazine Assembly	74	Stirrup Pin
34	Magazine Butt Plate	75	Trigger Assembly
35	Magazine Butt Plate Catch Assembly	76	Trigger
36	Magazine Follower	77	Trigger Plunger
37	Magazine Spring	78	Trigger Plunger Pin
38	Magazine Tube	79	Trigger Plunger Spring
39	Magazine Catch		E Ring Retainer
40	Magazine Catch Nut		
41	Magazine Catch Plunger		
42	Magazine Catch Spring		

This schematic diagram and part description conforms to current specifications. From time to time changes may be made, and the gun which you own may not correspond exactly with the information provided on this sheet.



Smith & Wesson

2100 ROOSEVELT AVENUE, P.O. BOX 2208, SPRINGFIELD, MA 01102-2208 • (413) 781-8300