

**Rydon 66  
Automatic Rifle  
22 Caliber  
Owner's Manual**

*Remington*®

22 CALIBER  
AUTOMATIC RIFLE

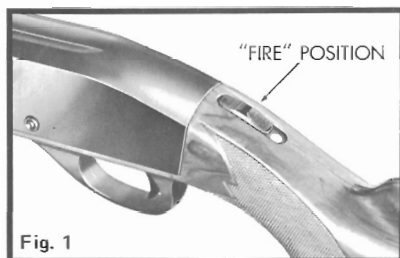


Fig. 1

Your Remington "Nylon 66" is a 22 caliber automatic rifle chambered for long Rifle cartridges only. The autoloading action, after firing, will open and eject the fired cartridge case. The action then closes to cock and reload.

**SAFETY** — Operated by thumb at rear of receiver cover. Push rearward to SAFE position. RED indicator button will not show in SAFE position. The safety is designed

to separate trigger from action when in SAFE position. Trigger in SAFE position is free swinging and cannot fire rifle.

**FIRE** — Push safety forward to FIRE position (Fig. 1). RED indicator button will show to rear of safety in FIRE position. Pull trigger to fire each round loaded into barrel. After firing, the autoloading action is designed to cock the rifle after fired cartridge case is ejected.

**TO SINGLE LOAD AND COCK RIFLE** — Push safety rearward to SAFE position. Turn ejection port in receiver upwards and drop cartridge into recess against closed action (Fig. 2). Pull bolt handle back quickly and release. Cartridge will then drop into action and load forward into barrel chamber.

**TO MAGAZINE LOAD** — Load cartridges in rear of stock. Capacity is 14 long rifle cartridges. Push safety rearward to SAFE position. Hold rifle with muzzle downward. Reach into butt plate recess and turn magazine plug to unlock magazine tube. Pull magazine tube from stock. After loading, replace magazine tube and lock in place by turning magazine plug.

**TO UNLOAD** — Push safety rearward to SAFE position. Unlock and remove magazine tube from rear of stock. Turn muzzle upwards and allow live cartridges to empty from magazine. Replace magazine tube and lock in place.

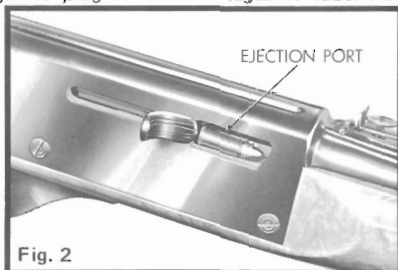


Fig. 2

**CAUTION:** After unloading, pull bolt handle back repeatedly to unload live cartridges from action or barrel chamber. A colored magazine follower should be seen from ejection port when action is empty. Check chamber of barrel from open ejection port to make sure no live cartridge remains in chamber. The Remington "Nylon 66" is designed to use all the amazing natural qualities of DuPont Nylon. Nylon is self-lubricating and provides smooth bearing surfaces for the free movement of the autoloading action. Therefore, cleaning and oiling is unnecessary for thousands of rounds of firing.

**BARREL CLEANING AND CARE** — Wipe bore with 22 caliber cleaning patch. Wire brush with powder solvent, if necessary, and wipe clean. Use lightly oiled patch after cleaning.

**RIFLE DISASSEMBLY AND REASSEMBLY** (Fig. 3) — After extended shooting, or when rifle is to be laid away for some time, only partial disassembly for cleaning is required. Disassemble and reassemble as directed. Cock rifle. Push safety rearward to SAFE position. (RED button will not show.) Pull out bolt handle. Unscrew cover screws and remove from receiver cover assembly. Slide assembly upward and remove from rifle. Remove ejector (Free fit), from exposed left side of rifle.

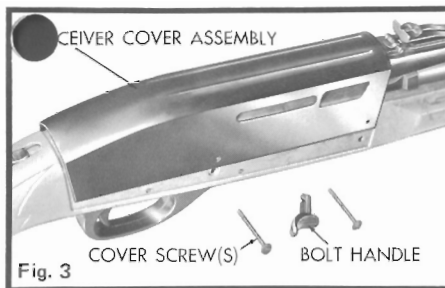


Fig. 3

no further disassembly of rifle is recommended unless replacement of parts is required. Reassemble parts in reverse order

**ACTION CLEANING AND CARE** (Fig. 4) — Pull back bolt assembly and hold. Scrape shooting residue from cartridge feed guide. Also scrape residue from bolt rails in stock. Clean face of bolt assembly. The metallic action parts of the Remington NYLON 66 will perform best and remain clean longer if little or no oil is used. The nylon parts need no oil. Use oil sparingly on metallic action parts to prevent rust. Always wipe receiver cover and barrel with oiled cloth after handling. Fingers leave invisible "prints" of moisture that can rust steel parts unless removed. No special care of nylon parts is required. After exposure to wet weather, always wipe receiver cover and barrel with oil to prevent rusting. Abrupt changes in temperature cause condensation and wetness, therefore, special care to metal parts is required for rust prevention. When shooting in below freezing weather remove any excess oil and use dry graphite.

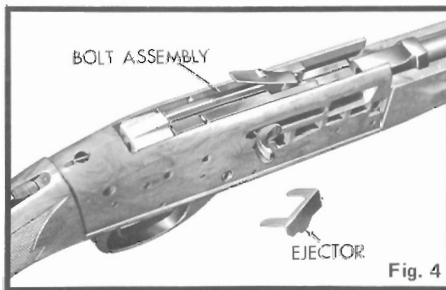


Fig. 4

Your Remington "NYLON 66" may be adjusted for windage or range purposes by movement of rear sight. The front sight is of "fixed" type, not adjustable, and attached to barrel by two screws. Coin fitted slots assist operation of both windage and range screws. A stop prevents either screw from being removed from the sight. The receiver is designed with two dovetail grooves cut into top panel for attaching "tip-off" type of telescope mounts.

The mount may be easily slipped into receiver grooves and tightened in desired position.

**RANGE** (Fig. 5) — Turn range screw clockwise to raise sight. This will raise bullet impact at target or increase range. Turn range screw counter clockwise to lower sight. This will lower bullet impact at target or lessen range.

**WINDAGE** (Fig. 5) — Screw windage screw clockwise to move rear sight to right. This will move bullet impact at target to right. Screw windage screw counter clockwise to move rear sight to left. This will move bullet impact at target to left.

**MAINTENANCE** — Rifle should be checked periodically by a competent gunsmith to ensure proper inspection and any necessary replacement of worn or damaged parts.



Fig. 5

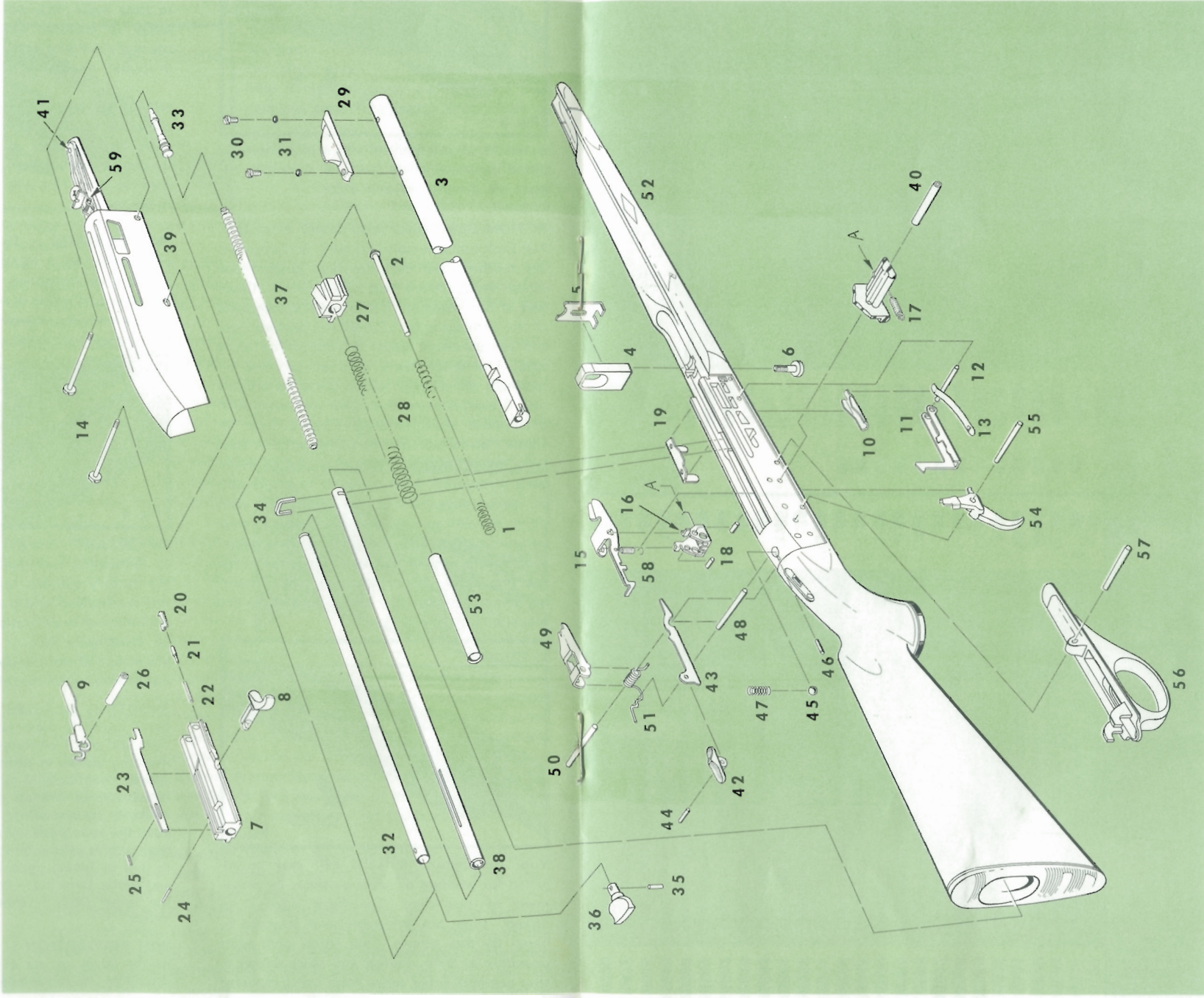
**IMPORTANT:** This gun has been manufactured to Remington specifications and shipped from the factory suitable for use. Remington does not recommend and is not responsible for any alteration or modification to the gun not made by Remington factory personnel, nor the replacement of worn or damaged parts with those not of Remington manufacture.

**SHOOTING GLASSES.** Smart shooters, who don't normally wear corrective lenses, always hunt and shoot wearing good, impact-resistant shooting glasses in order to protect their eyes against unanticipated ricochet, possible powder blowback, or branch and twig whiplash. In addition to eye safety, green or gray glasses keep the eyes fresh and untired on bright, glary days, while yellow lenses aid in spotting game in dim or fading light. So for safety, comfort and better shooting — both in the field and on the target range — shooting glasses are a real "must"

**EAR PROTECTION** — Proper ear protection in the form of ear plugs or hearing guards should be utilized whenever practical.



**NYLON 66  
22 CALIBER  
AUTOMATIC RIFLE**



Send all guns for factory service and inquiries on service and parts to  
**REMINGTON ARMS COMPANY, INC.**  
 Arms Service Division  
 Ilion, New York 13357

All other inquiries are to be addressed to  
**REMINGTON ARMS COMPANY, INC.**  
 Bridgeport, Connecticut 06602



**NYLON 66**

**22 CALIBER  
AUTOMATIC RIFLE**

**PARTS LIST**

NOTE: SEE INSTRUCTIONS FOR ORDERING PARTS.

View Part No.	NAME OF PART	List Price	View Part No.	NAME OF PART	List Price
1	Action Spring	\$ .55	48	Safety Lever Cam Pin	.35
2	Action Spring Plunger	.35	49	Sear	1.30
3	Barrel	11.40	50	Sear Assembly Pin	.35
4	Barrel, Apache Black	15.90	51	Sear Spring	.35
5	Barrel Bracket	1.00	52	Stock Assembly	20.70
6	Barrel Bracket Assembly	1.30	25007	Stock Assembly, Apache Black	23.50
7	Barrel Support	.35	53	Striker Spring Sleeve	.80
8	Barrel Lock Screw	.55	54	Trigger Complete	1.40
9	Bolt	4.60	55	Trigger Assembly Pin	.35
10	Bolt Assembly	6.85	56	Trigger Guard	1.40
11	Bolt Handle	.35	57	Trigger Guard Assembly Pin	.35
12	Cartridge Feed Guide	.55	58	Trigger Spring	.55
13	Cartridge Feed Guide Spring Complete	1.30	59	Windage Screw	.55
14	Cartridge Feed Insert	.35			
15	Cartridge Stop	.35			
16	Cartridge Stop Pin	.35			
17	Cartridge Stop Spring	.35			
18	Cover Screw	.55			
19	Cover Screw, Apache Black	.90			
20	Disconnecter	1.00			
21	Disconnecter Assembly	2.55			
22	Disconnecter Pivot	1.00			
23	Disconnecter Pivot Spring	.55			
24	Disconnecter Pivot Pin	.35			
25	Ejector	.80			
26	Elevation Screw	.55			
27	Elevation Screw Washer	.35			
28	Extractor	.80			
29	Extractor Plunger	.35			
30	Extractor Spring	.35			
31	Firing Pin	1.00			
32	Firing Pin Retaining Pin	.35			
33	Firing Pin Retractor Spring	.35			
34	Firing Pin Stop Pin	.35			
35	Firing Pin Striker	1.40			
36	Firing Pin Striker Spring	.55			
37	Front Sight	1.90			
38	Front Sight Screw	.35			
39	Front Sight Washer	.35			
40	Inner Magazine Tube	1.00			
41	Magazine Follower	.35			
42	Magazine Lock	.35			
43	Magazine Pin	.35			
44	Magazine Plug	.35			
45	Magazine Spring	.55			
46	Magazine Tube Assembly	2.30			
47	Outer Magazine Tube	1.40			
48	Receiver Cover Assembly	6.85			
49	Receiver Cover Assembly, Apache Black	10.35			
50	Rear Cover Screw Bushing	.35			
51	Rear Sight Assembly Complete	2.80			
52	Rear Sight Rivet	.35			
53	Safety	.35			
54	Safety Assembly	.80			
55	Safety Lever	.35			
56	Safety Lever Pin	.35			
57	Safety Detent Ball	.35			
58	Safety Detent Retaining Pin	.35			
59	Safety Detent Spring	.35			

View Part No.	NAME OF PART	List Price	View Part No.	NAME OF PART	List Price
60	Sling Strap Assembly	3.80	15111	Action Spring	\$ .55
61	Sling Retaining Screw (need 4)	.30	15127	Barrel	7.25
62	Sling Swivel Retainer (need 2)	.60	15045	Barrel Bracket	1.00
63	Sling Strap Assembly and Mountings Complete	6.25	15124	Bolt	5.25
			26035	Bolt Assembly	8.70
			15125	Cartridge Feed Guide	.55
			15119	Cartridge Feed Insert	1.55
			15167	Cartridge Feed Insert Spring	1.30
			15120	Cartridge Stop	.35
			15050	Counter Chain Retainer	.65
			15055	Counter Chain Retainer Screw	.35
			15168	Deflector	1.00
			15166	Deflector Screw	.35
			15217	Disconnecter	1.00
			26165	Disconnecter Assembly	2.55
			24475	Disconnecter Pivot Pin	.35
			15126	Ejector	.80
			15118	Extractor	.80
			15148	Firing Pin Retaining Pin	.35
			15113	Firing Pin Striker	1.40
			15114	Firing Pin Striker Spring	.55
			15121	Inner Magazine Tube	1.00
			15123	Magazine Bushing	.55
			25800	Magazine Tube Assembly	2.30
			25805	Receiver Cover Assembly	6.85
			25815	Stock Assembly, Mohawk Brown, Complete	25.55

**NYLON 66GS "GALLERY SPECIAL"  
22 Caliber Short Only**

NOTE: For Parts Not Listed — See Nylon 66 Standard Model

# INSTRUCTIONS FOR ORDERING PARTS

## (PLEASE READ CAREFULLY)

Please give model number, part number and name. Give serial number and state caliber or gauge and choke. Identify parts from list, picture or exploded view. List interchangeable shotgun barrels on separate order form to speed shipment.

Cover only one subject in letter or order. Do not order parts and give repair instructions in same letter.

Please do not ship sample parts if they may be identified otherwise. See shipping instructions below.

Parts will be supplied for discontinued models if available. Parts cannot be supplied nor guns repaired if not listed in complete line parts list. Parts, being made to close dimensions, may require slight adjustment or fitting to assure proper function of arm.

**IMPORTANT:** Do not combine Part Orders with Gun Service Orders. Please send Part Orders direct to:

**REMINGTON ARMS COMPANY, INC.**  
PARTS DEPT.  
ARMS SERVICE DIVISION  
Ilion, New York 13357

# INSTRUCTIONS FOR FACTORY SERVICE

## (PLEASE READ CAREFULLY)

Please package carefully. Use plenty of cushioning material to prevent movement of gun or parts in package. Please do not ship gun in a gun case, or special container that must be returned. Return of gun or parts will be speeded if properly packaged in a throw-away carton. Clearly mark forwarding and return address on gun package as well as on attached letter. Securely attach complete letter of information on outside of each package returned to factory for repairs. Please do not return gun accessories such as sling straps, quick release swivels, special boots, covers, telescopes, mounts or any special equipment to factory with gun shipment. Give full details of contents. State if complete gun or part. List model number, part number and name, serial number and caliber or gauge. Give full condition of contents — any parts missing or damaged, etc. This will enable us to accurately list needed repairs.

Do not order parts and give repair instructions in same letter. To avoid delay in starting work, please include in first order or letter the trouble to be corrected, changes desired or parts to be replaced. If an estimate is required please advise. Otherwise work will proceed and a statement of cost will be sent. This will speed service.

Do not order parts and give repair instructions in same letter. To avoid delay in starting work, please include in first order or letter the trouble to be corrected, changes desired or parts to be replaced. If an estimate is required please advise. Otherwise work will proceed and a statement of cost will be sent. This will speed service.

Unless specified otherwise, shipments will be made by way of Parcel Post on small packages, Express on larger packages. Remington gun parts are not interchangeable with those of any other make. For this reason the Remington Arms Company, Inc., cannot service any gun not of its manufacture.

Repairs will be made on discontinued models as long as supply of parts is available. However, repairs cannot be made for models which are not listed in Complete Line Parts Lists.

**IMPORTANT: IT IS A FEDERAL OFFENSE TO SHIP FIREARMS AND AMMUNITION TOGETHER. BEFORE PACKAGING FIREARMS FOR RETURN TO FACTORY, ALL LIVE AMMUNITION SHOULD BE REMOVED.**

If live ammunition is included in package, shipment cannot be made by Insured Mail. All other shipments may be made by Insured Mail, Please send repairs direct to:

**REMINGTON ARMS COMPANY, INC.**  
ARMS SERVICE DIVISION  
Ilion, New York 13357

For instructions on how to dress, ship and deliciously cook wild game, send for the Remington "Wild Game" Cookbook \$2.95—Remington Sportsmen's Library, P.O. Box 432, Bridgeport, Connecticut 06601.