

Remington Arms Company, Inc.
870 Remington Drive
PO Box 700
Madison, NC 27025-0700
(336) 548-8700
800-243-9700

REMINGTON

Arms Company, Inc.

MODEL 25 SLIDE ACTION REPEATING RIFLE

- **Shooting Safety Commandments**
- **Information**
- **Instructions for Operation & Care of Rifle**
- **Components Parts Listing**
- **Value and Reference Book Listing**

NOTE: We are pleased to accommodate your request for the Model 25 Slide Action Repeating Rifle information. The following documentation represents all information available on this model from the Remington Arms Co., Inc.

DO NOT MAKE CHANGES OR ALTERATIONS TO ANY PARTS OF A FIREARM. USE ONLY REMINGTON PARTS. NEVER MAKE AN ADJUSTMENT TO THE TRIGGER, OR CHANGE THE SHAPE OR SIZE OF THE SEAR, SEAR NOTCH, OR OTHER PARTS.

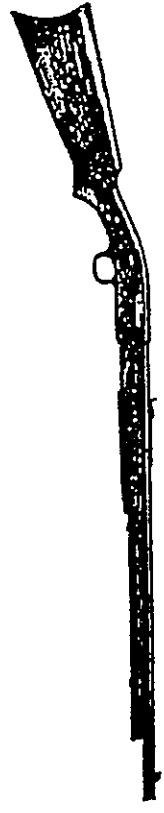
Ten Commandments of Shooting Safety

1. Always keep the muzzle pointed in a safe direction.
2. Firearms should be unloaded when not in use.
3. Don't rely on your gun's "safety".
4. Be sure of your target and what is beyond it.
5. Use correct ammunition.
6. If your gun fails to fire when the trigger is pulled, handle with care!
7. Always wear eye and ear protection when shooting.
8. Be sure the barrel is clear of obstructions before shooting.
9. Do not alter or modify your gun, and have guns serviced regularly.
10. Learn the mechanical and handling characteristics of the firearm you are using.

Remington

Model 25 Slide Action Repeating Rifle

Chambered only for .25-20 Winchester, Marlin and Remington or .32 Winchester, Marlin and Remington Center-Fire cartridges. Hi-Speed and Regular cartridges.



Solid Breach Hammerless Take-Down

SPORTSMEN, trappers and farmers will be quick to appreciate the great range of usefulness offered by this new Remington rifle. Just the rifle for real sport, and for use in the extermination of pests. Just the rifle for the trap line, too.

These rifles are particularly adapted to shooting coyotes, fox, skunk, bob-cat, jack rabbit, opossum, raccoon, woodchuck, hawks and all other medium sized game. It is an especially desirable rifle for the farmer, because it is adapted to a wide variety of game.

Clean-cut, graceful outline, accurate and dependable; it is just the rifle for the vast number of experienced sportsmen and trappers who desire more power than a 22 caliber will give, but do not want a rifle of high power.

In general appearance and operation, the Model No. 25 is similar to the well-known Remington Model 14 High Power Slide Action Rifle and the Remington Model 12 Caliber Repeater.

Model No. 25 is beautifully balanced. It swings up to the shoulder with ease on quick shots, and yet the weight, five and one-half pounds, is enough to give steadiness on difficult shots.

Model No. 25 is absolutely safe. The solid breach protects the shooter from the possibility of burning powder gas reaching his eyes. Being hammerless, there is no chance for accidents due to an exposed hammer catching on the clothing, or twigs, and discharging the rifle. A recoil lock is built in the action so the arm remains locked for firing until the cartridge is exploded in the chamber.



Remington

Model 25 Slide Action Repeating Rifle

Chambered only for .25-20 or .32 Winchester, Marlin and Remington Center-Fire cartridges. Hi-Speed and Regular Cartridges.



Directions for Operating

To Put Together unscrew and pull take-down screw out as far as possible until it clears trigger guard; insert the trigger guard into receiver, carefully aligning the tongue slot at front end, also dove pins with holes at rear end of guard, and push together until the take-down screw may be turned up tightly.



To Take Down unscrew the assembling screw on the left side of the arm; pull screw out until it strikes the retainer which prevents it dropping out of the receiver, and pull stock portion away from the receiver and barrel.

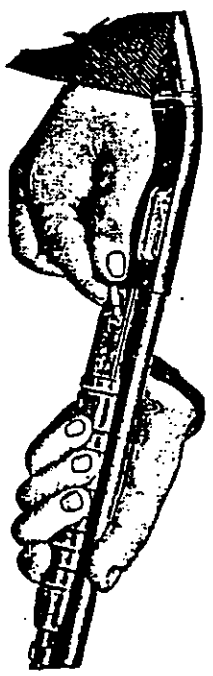


Figure 1

To Load Magazine insert bullet end of cartridge under rear end of loading door (Figure 1) located in right side of action bar. The door will then open wide when cartridge is pushed forward its full length into the opening; press the head endwise into the opening and the magazine spring will move this first cartridge rearward and expose the magazine follower, against which place bullet of next cartridge and push forward until its head will move sidewise, like the first one. Continue until ten cartridges are thus loaded into magazine. Before loading you can tell at a glance if there are any cartridges remaining in magazine.

To Load Barrel press upward on timing lever exposed just forward of the trigger guard; move fore-end completely rearward to open action, and close again to feed first cartridge into the barrel. Another cartridge may now be placed into the magazine, making eleven in the arm. The rifle may be used as a single-loader when the magazine is empty by placing cartridge directly into the barrel and closing action.

To Unload Without Firing put safety "ON." Press timing lever; open action to eject cartridge. Close action. Repeat until arm is empty.

To Unload Barrel Only put safety "ON." Press timing lever. Open action slowly until cartridge is partially ejected. Remove cartridge by hand, and without completing rearward movement, close action.

To Set Safety move the safety located at rear of trigger from left to right.



MODEL 25

SLID ACTION CENTERFIRE RIFLE

CALIBERS: 25-20 WINCHESTER, MARLIN, AND REMINGTON
.32 WINCHESTER, MARLIN, AND REMINGTON

1/1923 Introduced Model 25A Standard Grade
Model 25C Special Grade
Model 25D Peerless Grade
Model 25F Premier Grade
Model 25R Carbine Grade

Note 24" barrel except Carbine

1/1935 Discontinued Model 25 (All Grades) - Not listed in
1936 Catalog

Note Manufactured through 1936

Remington

Model 25 Slide Action Repeating Rifle

Chambered only for .25-30 or .32 Winchester, Marlin and Remington Center-Fire cartridges. Hi-Speed and Regular cartridges.

To Operate Action. When ready to fire, move safety "OFF" by pushing from right to left; then pull trigger to fire. Pull fore-end rearward quickly to open action, which ejects empty shell and cocks the arm. During the first quarter inch of this movement, the action bar positively retracts the firing pin away from the primer so it will not drag and interfere with the downward unlocking movement of the breech block. The timing lever also locks the trigger until action is completely closed. During the movement of the action, the cartridge stop positively intercepts the column of cartridges and allows only one to pass upon the carrier. This insures correct feeding at all times.

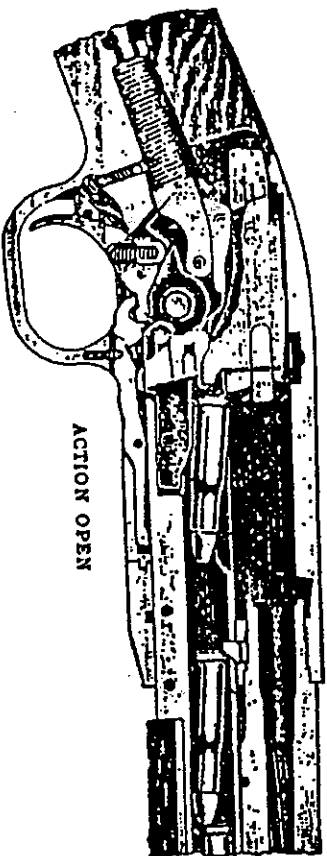
The forward movement of the action bar moves the carrier upward to feed a fresh cartridge to the level of the barrel and into the grasp of the extractor, when the breech block carries it into the barrel.

The final closing motion raises front end of breech block to engage its locking shoulder with the corresponding shoulder in receiver to lock the breech securely. The timing lever releases the trigger so it may be pulled and also locks the action bar forward so it cannot be opened unless arm is firing or the timing lever is pressed.

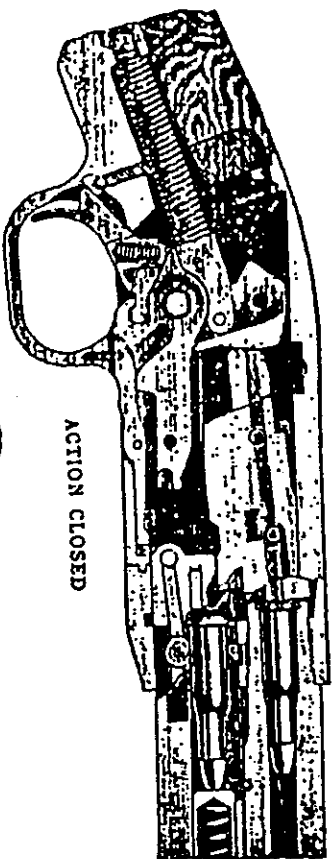
To Remove Breech Block take the gun down. Pull take-down screw out as far as possible, move fore-end rearward until stopped; hold breech block into clearance space in top of receiver; move fore-end forward, and lift the breech block out of receiver. The barrel may now be easily cleaned and inspected from the breech end.

To Prevent Rust. Wash out with boiling water to remove smokeless powder and primer residue; wipe dry, and oil thoroughly.

SECTIONAL VIEWS



ACTION OPEN

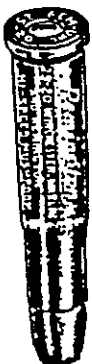


ACTION CLOSED

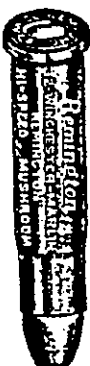


Remington

Ammunition for Use in the Model 25 Rifle



.32 Win., Mar. and Rem. Hi-Speed Mushroom



.25 Win., Mar. and Rem. Hi-Speed Mushroom

A wide variety of ammunition is available for the Model 25 rifle in both calibers, ranging from the ordinary black powder cartridge to the new Hi-Speed mushroom type. The .25-30 and .32 Hi-Speed mushroom cartridges were developed for this particular rifle and are recommended for it. They are loaded with copper jacketed bullets made with a small hole in the point. They give increased velocity, flatter trajectory, greater mushrooming and killing power, and equal or better accuracy than the older loads.

BALLISTICS

Cartridge	Weight of Bullet	Muzzle Velocity	Muzzle Energy	Trajectory		Range for Accuracy
				100 yds. Height at 50 yds.	200 yds. Height at 100 yds.	
.25-30—Winchester, Marlin and Remington, Black Powder	86 grs.	1380 f.m.	360 ft. lbs.	2.9 in.	13.5 in.	150-200 yds.
.25-30—Win. Mar. & Rem., Smokeless Lead.....	86 "	1380 "	360 "	2.9 "	13.5 "	" "
.25-30—Win. Mar. & Rem., Smokeless S. P.....	86 "	1380 "	360 "	2.9 "	13.5 "	" "
.32-30—Win. Mar. & Rem., Hi-Speed Mushroom.....	80 "	2200 "	645 "	1.3 "	6.3 "	300-300 "
.32—Win. Mar. & Rem., Black Powder.....	100 "	1325 "	390 "	3.2 "	15.4 "	150-200 "
.32—Win. Mar. & Rem., Smokeless Lead.....	100 "	1325 "	390 "	3.2 "	15.4 "	" "
.32—Win. Mar. & Rem., Smokeless S. P.....	100 "	1325 "	390 "	3.2 "	15.4 "	" "
.32—Win. Mar. & Rem., Hi-Speed Mushroom.....	80 "	3000 "	710 "	1.4 "	7.6 "	300-300 "

*Also supplied with M. C. bullet.

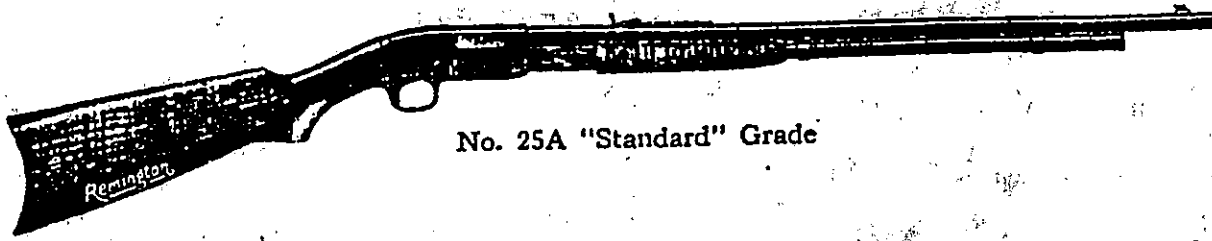
Model 25 Slide Action Repeating Rifle

Chambered only for .25-20 Winchester, Marlin and Remington or .32 Winchester, Marlin and Remington Center-Fire cartridges. Hi-Speed and Regular cartridges.

Solid Breech

Hammerless

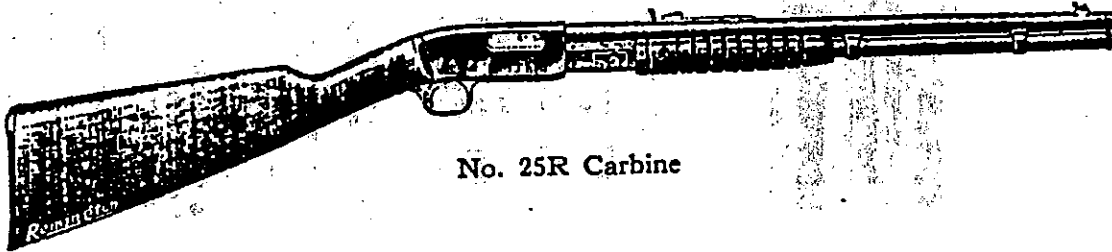
Take-Down



No. 25A "Standard" Grade

SPECIFICATIONS:—21-inch special Remington steel round barrel, with 20-inch twist. American walnut stock and fore-end. Half pistol grip; rifle style steel butt plate. Sights regularly furnished; step adjustable buckhorn rear sight and white metal bead front sight. Magazine holds 10 cartridges loaded through the door on the right side of action bar. Opening shows whether magazine is loaded or empty. Cross-bolt type of safety, conveniently located in rear of trigger guard. Weight, about 5½ pounds. Length over all, 41¼ inches. Length taken down, 28 inches.

MODEL 25 SUPPLIED IN HIGHER GRADES, CORRESPONDING TO THOSE OF MODEL 14, ON SPECIAL ORDER.



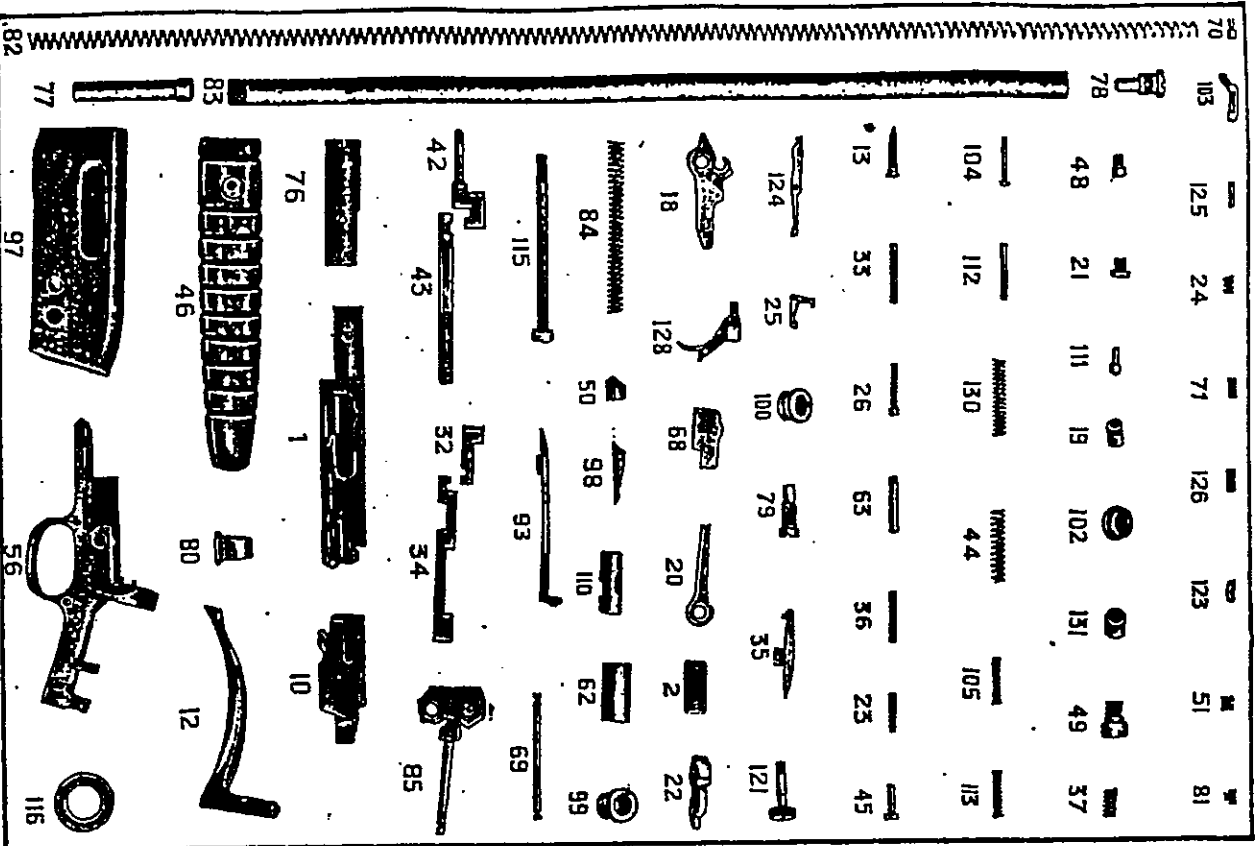
No. 25R Carbine

SPECIFICATIONS:—Same as No. 25A "Standard" Grade except that barrel is 18 inches long. Straight stock fitted with special gun stock pattern; steel butt plate. This carbine makes an excellent arm for saddle and automobile use. Light, compact — quick and easy to handle.

NOTE—Extras for Model 25 rifle on page 101. Special sights adapted to these rifles shown on pages 91, 92 and 93.

Model 25 Slide Action Repeating Rifle

COMPONENT PARTS

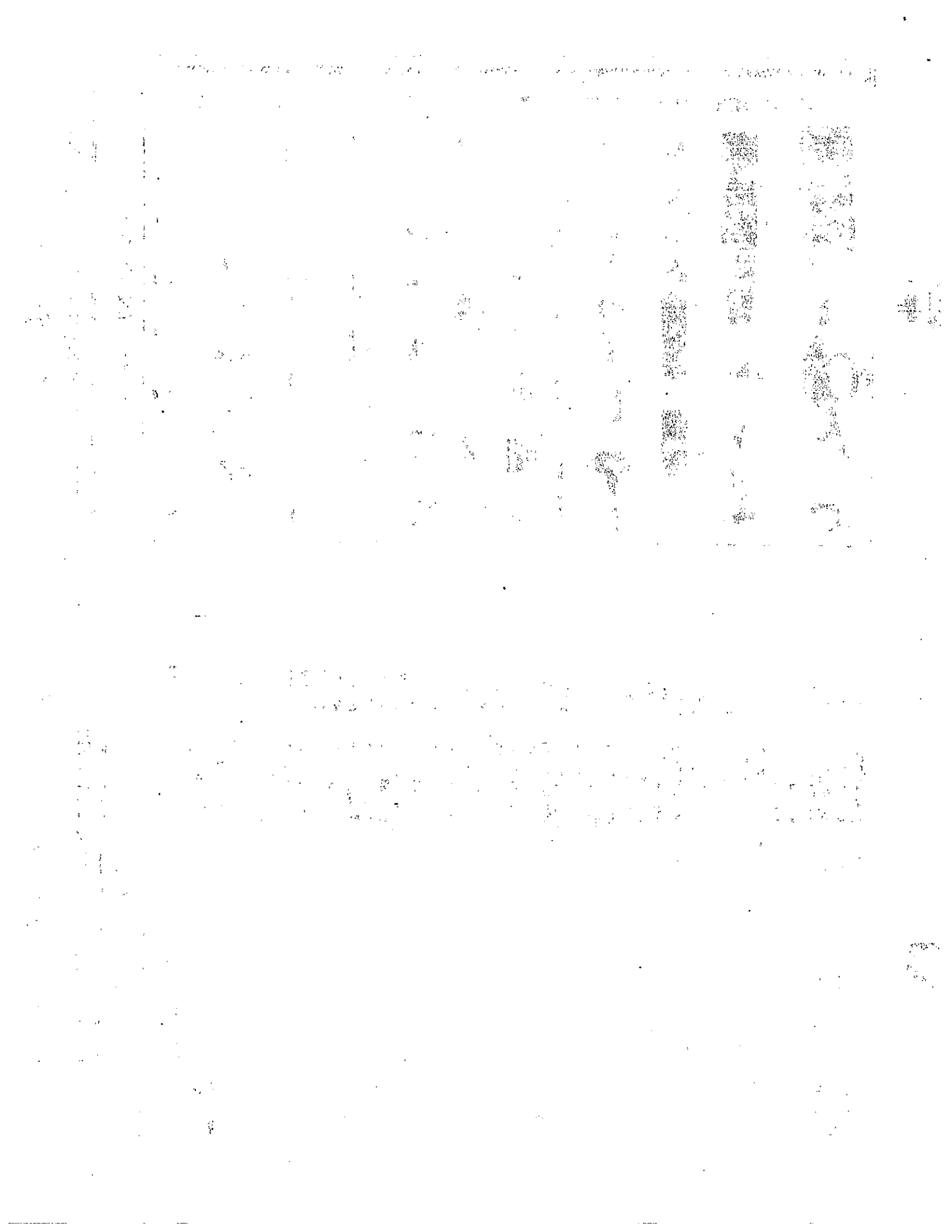


Model 25 Slide Action Repeating Rifle

COMPONENT PARTS

PART	PART
AA 1	AA 77
AA 1 1/2	AA 78
AA 2	AA 79
AA 8	AA 80
AA 10	AA 81
AA 10 1/2	AA 82
AA 12	AA 83
AA 13	AA 84
AA 18	AA 85
AA 19	AA 90
AA 20	AA 93
AA 21	AA 93 1/2
AA 22	AA 94
AA 23	AA 95
AA 24	AA 96
AA 25	AA 97
AA 26	AA 99
AA 32	AA 100
AA 33	AA 102
AA 34	AA 103
AA 35	AA 104
AA 36	AA 105
AA 37	AA 110
AA 42	AA 111
AA 43	AA 112
AA 44	AA 113
AA 45	AA 114
AA 46	AA 115
AA 47	AA 116
AA 48	AA 124
AA 49	AA 125
AA 50	AA 126
AA 51	AA 128
AA 56	AA 129
AA 61	AA 130
AA 62	AA 131
AA 63	AA 136
AA 68	AA 138
AA 88	AA 139
AA 89	
AA 90	
AA 71	
AA 76	





Firearms Value & Reference Books

NOTE: We do not provide information on firearms' values. You may want to have your firearm appraised by a gunsmith. The following sources may also be helpful. We do not accept responsibility for the goods or services provided by these sources.

Firearms Value Books

Blue Book of Gun Values

Blue Book Publications
8009 34th Avenue South #175
Minneapolis, MN 55425
800-877-GUNS

Flayderman's Guide to Firearm Values

Gun List
Modern Gun Values
Krause Publications
700 East State Street
Iola, WI 54990-0001
847-573-8530

Gun Trader's Guide

Stoeger Publishing Company
5 Mansard Court
Wayne, NJ 07470
973-872-9500

Reference Books

The Remington 700

John Flacy
Brownells, Inc.
200 South Front Street
Montezuma, IA 50171
515-623-5401

Cartridges of the World

Frank C. Barnes
Standard Catalog of Firearms
Krause Publications
700 East State Street
Iola, WI 54990-0001
847-573-8530

Shooter's Bible

Stoeger Publishing Company
5 Mansard Court
Wayne, NJ 07470
973-872-9500

Remington, America's Oldest

Gunmanker
Remington Arms Co.
PO Box 700
Madison, NC 27025
Attention: History Book
800-423-8495

1. The first part of the document discusses the importance of maintaining accurate records of all transactions and activities. It emphasizes that this is crucial for ensuring transparency and accountability in the organization's operations.

2. The second part of the document outlines the various methods and tools used to collect and analyze data. It highlights the need for a systematic approach to data collection and the importance of using reliable and valid measurement instruments.

3. The third part of the document discusses the ethical considerations that must be taken into account when conducting research. It emphasizes the need to protect the privacy and confidentiality of participants and to obtain their informed consent before any data collection begins.

4. The fourth part of the document discusses the importance of data management and storage. It emphasizes the need to ensure that data is securely stored and backed up, and that it is accessible to those who need it for analysis and reporting.

5. The fifth part of the document discusses the importance of data analysis and interpretation. It emphasizes the need to use appropriate statistical methods to analyze the data and to interpret the results in the context of the research objectives and the existing literature.

6. The sixth part of the document discusses the importance of data reporting and communication. It emphasizes the need to present the results of the research in a clear and concise manner, using appropriate visual aids and tables to enhance the readability of the report.

7. The seventh part of the document discusses the importance of data archiving and preservation. It emphasizes the need to ensure that data is preserved for the long term, so that it can be accessed and used for future research and analysis.

8. The eighth part of the document discusses the importance of data security and protection. It emphasizes the need to implement appropriate security measures to protect data from unauthorized access, loss, or theft.