

N.º	PART NAME
1	Barrel
2-A	Receiver
3-A	Saddle Ring Hold
4-A	Saddle Ring
5	Magazine tube
5-G	Magazine tube outside
6	Magazine follower
6-G	Magazine follower
7	Magazine spring
7-G	Magazine spring
8	Magazine plug
8-G	Magazine plug
9	Magazine plug screw
10	Magazine ring
13	Magazine plug screw
14	Forearm
15	Forearm tip
16	Forearm tip screw
17-B	Complete rear sight
18-B	
19-B	
20	Elevator
20-G	Magazine tube inside
21-G	Magazine plug slide pin
22-G	Magazine plug screw
23-G	Magazine plug slide pin
25	Breech bolt
26	Extractor
27	Extractor pin
28	Firing pin

N.º	PART NAME
29	Firing pin stop pin
30	Ejector spring stop
31	Ejector spring stop pin
32	Ejector
33	Ejector spring
34	Ejector collar
35	Lower tang
36	Trigger
37	Trigger spring
38	Trigger spring screw
39	Carrier
40	Carrier stop
41	Carrier stop spring
41-G	Magazine plug slide pin spring
42	Carrier stop pin
43	Carrier screw
44	Cartridge guide, left
45	Cartridge stop
46	Cartridge stop joint pin
47	Cartridge stop spring
48	Cartridge guide, right
49	Cartridge guide screws
50-C	Complete spring cover
51-C	
52-C	
53-C	
54-C	
55	Spring cover screw
56-F	Finger lever
57-F	Friction stud

N.º	PART NAME
58-F	Friction stud spring
59-F	Friction stud stop pin
60	Locking bolt, left
61	Locking bolt pin
62	Locking bolt pin stop screw
63	Locking bolt, right
64	Lever & breechbolt pin
65	Lever & breechbolt pin hole plug screw
66	Hammer
67-D	Main spring rod
68	Hammer screw
69	Main spring
70-E	Stock
71-E	Butt plate
72-E	Butt plate screw
73	Upper tang screw
76-D	Strip of rawhide
77	Locking lever
85	Locking pin
86	Locking spring
87	Locking ball
88	Locking ball
91	Front sight

# PUMA MODEL 92 RIFLES / CARBINES



## MODEL 92 PUMA RIFLES / CARBINES CHARACTERISTICS / SPECIFICATIONS

CALIBERS: .38 SPECIAL / .357 MAGNUM, .44-40, .44 MAGNUM, .45 COLT  
 BARRELS: ROUND / OCTAGONAL  
 FINISHES: BLUED, BLUED / CASE HARDENED, STAINLESS STEEL  
 (SOME MODELS INCLUDE BRASS FINISH)

BARREL LENGTH	OVERALL LENGTH	CAPACITY	APPROX. WEIGHT
16"	33½"	8 ROUNDS	2,620 g
20"	37½"	10 ROUNDS	2,800 g
24"	41½"	10 ROUNDS	3,400 g

### NOTE

Your Puma will accept cartridges indicated beside "CALIBERS" on the chart above. Also, every rifle/carbine has the caliber stamped on the barrel. The use of any other ammunition that is not indicated, as well as reloaded ammo, is extremely dangerous and could result in damage or injury to the shooter and people nearby.

### 1) LOADING THROUGH LOADING GATE

With the bullet of each cartridge, press the spring cover inward and push the cartridges forward nearly to end of spring cover, pushing the last one fully forward until the cover closes.

### 2) LOADING THROUGH MAG TUBE

Pull out inside magazine tube until the loading port is clear and place the cartridges into the magazine. Replace the tube in its position.

(Models PUM-60024, PUM-60025, PUM-60026, PUM-60030, PUM-60031 and PUM-60032 only)

### OPERATING

Swing the finger-lever forward then back. The gun is now loaded and cocked. For safe carrying, let the hammer carefully down to half-cock by placing thumb on hammer and exerting pressure on trigger sufficient to release full-cock engagement. Then IMMEDIATELY remove finger from trigger. Permit hammer to move forward under control of thumb to half-cock position. To fire, draw the hammer back to full-cock. The ejection of the spent case and ready replacement with a fresh cartridge is done automatically on a subsequent operation of the finger lever.

### WARNING

The use of Full Metal Jacketed Bullets in rifles with tubular magazines is an unsafe practice. Cartridges in a magazine tube are aligned in a manner that permits the bullet point to be in direct contact with the primer of the abutting cartridge; therefore, recoil inertia may be sufficient to set off the cartridges in the magazine. DO NOT, UNDER ANY CIRCUMSTANCES, USE AMMUNITION HAVING FULL METAL JACKETED BULLETS.

### BASIC RULES OF FIREARM SAFETY

- Learn the mechanical and handling characteristics of the firearm you are using.
- Always keep the muzzle pointed in a safe direction, finger off the trigger.
- Firearms should be unloaded and securely stored when not in use.
- Be sure the barrel is clear of obstruction before using.
- Be sure of your target before you shoot.
- Wear shooting glasses and ear protection when you shoot.
- Never climb a fence with a loaded firearm.
- Don't shoot at a hard surface or at water.
- Never transport a loaded firearm.
- Never take alcoholic beverages or drugs when shooting or handling a gun.

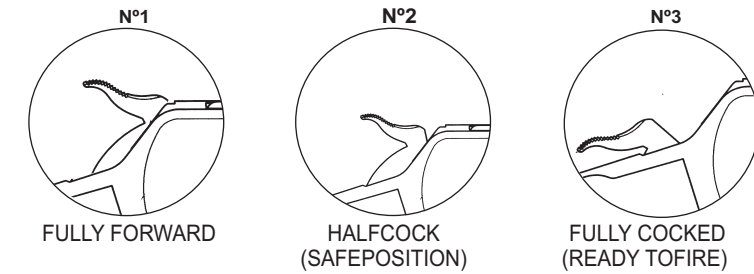
## SAFETY WARNING!

(READ CAREFULLY BEFORE USING YOUR RIFLE)

YOUR PUMA RIFLE COMES WITH A FIRING PIN LOCKING SAFETY LATCH LOCATED ON TOP OF THE MOVING BOLT.

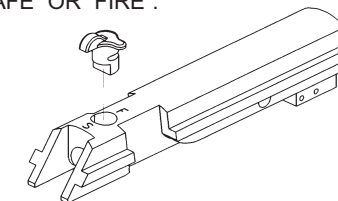
### OPERATION

MAKE SURE THE HAMMER IS ON "HALF COCK" (SAFE POSITION) BEFORE CHANGING THE POSITION OF THE SAFETY LATCH.

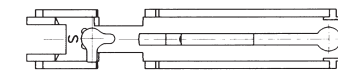


IMPORTANT: NEVER CARRY OR HANDLE YOUR RIFLE WITH THE HAMMER ON FULLY FORWARD POSITION (DRAWING NO. 1 ABOVE). ALWAYS KEEP YOUR RIFLE WITH THE HAMMER ENGAGED ON HALF COCK (SAFE POSITION) AS SHOWN ON DRAWING NO. 2 ABOVE).

ONCE THE HAMMER IS ON "HALF COCK" (SAFE POSITION), THE SAFETY LATCH IS VERY EASY TO OPERATE. MANUALLY YOU CAN CHANGE THE SAFETY LATCH TO THE POSITION "SAFE" OR "FIRE".



WHEN IN THE "S" POSITION (ACCORDING TO DRAWING BELOW) THE GUN IS LOCKED AND IT WILL NOT SHOOT.



WHEN IN THE "F" POSITION (ACCORDING TO DRAWING BELOW) THE GUN IS READY TO SHOOT.

