



PIONEER ARMS CORP.

PIONEER[®]



Pioneer Shotgun Owner's Manual

A true hammered shotgun for The Classic Cowboy!

Dear customer,

Thank you for choosing Pioneer a true hammered Cowboy Action Shotgun.
Your shotgun is manufactured by PIONEER ARMS CORP. to the highest standards.
It has been produced to meet the requirements for Cowboy Action Shooting competition.

Members of SASS (Single Action Shooting Society) and NCOWS (National Congress of Old West Shootists) have participated in the design and testing process of the Pioneer shotgun. Thanks to their efforts the Pioneer shotgun is equipped with a manual tang safety, a large trigger guard, wide triggers and hammerspurs, and top lever positioned to the left for the shooters convenience and speed, which allows for saving those precious seconds at the stage.

In appreciation of their efforts, we would like to dedicate our Pioneer shotgun to them and we are proud to bring it to you.

See what cowboys have to say about it!



The 45 Kid SASS # 3150
testing Pioneer
Shotgun came in 2nd at the Mule Camp

"This is the fastest hammered shotgun I've ever shot. The placement of the hammers and lever make it so easy, it's hardly noticeable that you're shooting a hammered shotgun. The weight of the barrel makes it easy to stay on target, but it's not so heavy as to cause you to overswing on multiple targets. The polished chambers allow the cartridges to fall out effortlessly. I was impressed with the fit and finish. The angle of the stock and the large front sight make the targets appear to jump in front of your barrel. And just when I was dazzled to the limit, they showed me the case it comes in - class!"

"This will be a great shotgun for capturing the authentic look of the Old West without sacrificing a competitive edge."



Paul Bearer aka: Jim Bartels
SASS # 13506 NCOWS # 1522
ready to shoot another 100 rounds

"It looks and shoots great. Heck, I fired 100 rounds as fast as I could and never missed at 25 yards! I was tired but not beat up. (You course designers had better not use this as an excuse to come up with a 100 round shotgun stage, though!)"

PIONEER ARMS CORP.
1905 Roku 1/9 Street
26-612 Radom, Poland
European Comity

Pioneer trademark is licensed from the Pioneer Arms Corp., Moline, IL, U.S.A.

Use the space below to record information about your new Pioneer shotgun.

Model: _____

Serial number: _____

Purchased from: _____

Date of purchase: _____

This manual and the safety warnings contained herein must be read and understood before using your shotgun.



PAY SPECIAL ATTENTION TO THE SAFETY WARNINGS MARKED WITH THE SAFETY WARNING SIGN IN THIS MANUAL

Please feel free to write us immediately if you have any observations regarding the Pioneer performance and operation.



THIS MANUAL SHOULD ALWAYS ACCOMPANY THIS FIREARM AND BE TRANSFERRED WITH IT UPON CHANGE OF OWNERSHIP, OR WHEN THE FIREARM IS LOANED OR PRESENTED TO OTHER PERSONS.

TABLE OF CONTENTS

Firearms safety rules	4
Illustration of major component	5
Operation of the safety mechanism	6
Top lever	7
Extractor	9
External hammers	9
External firing pins	9
Triggers	10
Disassembly	10
Assembly	12
Ammunition	13
Loading and unloading	14
Cocking and un-cocking	14
Cleaning	16
Firing	17
Dry firing	17
Parts list and exploded view	18
Notes	21
Warranty	24

FIREARMS SAFETY DEPENDS ON YOU.
MAKE NO MISTAKE ABOUT IT!

"From the time an individual picks up a firearm, that individual shooter becomes a part of a system over which that shooter has complete control. The shooter is the only part of the system that can make a gun safe - or unsafe. You must constantly stress safety when handling firearms, especially to children and non-shooters. Don't be timid when it comes to gun safety. If you observe anyone violating any safety precautions, you have an obligation to suggest safer handling practices. Firearms safety is up to you. Make no mistake about it."

Always Keep the Muzzle Pointed in a Safe Direction

Firearms Should be Unloaded when not in Use

Don't Rely on Your firearm's "Safety"

Be Sure of Your Target and What's Beyond

Use the Correct Ammunition

If Your firearm Fails to Fire When the Trigger is Pulled, Handle with Care

Always Wear Eye and Ear Protection When Shooting

Be Sure the Barrel is Clear of Obstructions Before Shooting

Don't Alter or Modify Your firearm, and Have firearms Serviced Regularly

Learn the Mechanical and Handling Characteristics of the Firearm before Using it.

Courtesy of Sporting Arms and Ammunition Manufacturer's Institute, Inc.

ILLUSTRATION OF MAJOR COMPONENTS

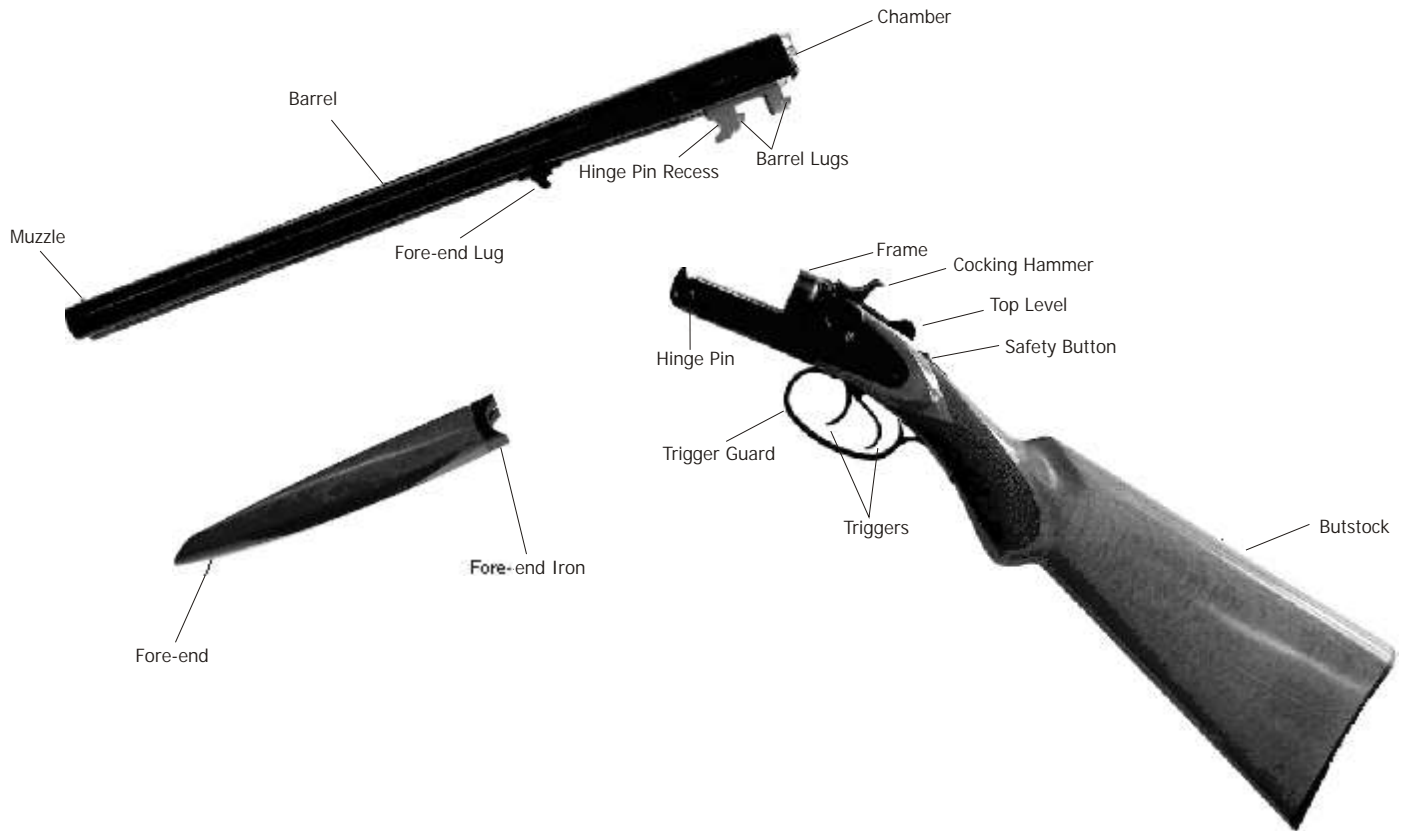


Fig. 1 Main Parts Identification

OPERATION OF THE SAFETY MECHANISM

Your PIONEER shotgun is equipped with triple safety features 1 2 3

1 MANUAL SAFETY mechanism is located on the upper tang of the frame (See figure 2) and must be manually moved to the desired position by the shooter.



Fig. 2 Manual Safety

ON SAFE - the shotgun is in the SAFE position when the safety button is moved fully rearward and the letter "S" appears on the frame tang in front of the safety button. In this position sears are blocked to prevent discharge under non-firing conditions. ON SAFE position disables triggers and external hammers movement throughout sears blocking mechanism.



LIKE ANY MECHANICAL DEVICE THE SAFETY CAN POSSIBLY FAIL. IT CAN BE JARRED OR INADVERTENTLY MANIPULATED INTO THE UNSAFE POSITION.

OFF SAFE - when the safety button is moved to its most forward position towards the muzzle, the letter "S" will be covered, and the shotgun is in its firing mode. In this condition you can cock the hammers, and pull triggers to fire the shotgun.



THE SAFETY SHOULD ALWAYS BE "ON SAFE" POSITION EXCEPT WHEN YOU ARE ACTUALLY READY TO SHOOT YOUR SHOTGUN.

2 REBOUNING HAMMERS mechanism prevents accidental firing if your finger slips off of the hammer while cocking -mechanism prevents accidental firing then. The hammer automatically rebounds to blocked position if not fully cocked.

3 AUTOMATIC SEARS SAFETY mechanism prevents from accidental firing when action is not fully closed. It engages automatically when top lever is pushed to the right (open) position or when locking the action. In both operations, unlocking and locking the action, automatic safety blocks the sears disabling triggers movement.

NEVER RELY COMPLETELY ON YOUR SHOTGUN'S SAFETY FEATURES.



ALWAYS TREAT THE SHOTGUN AS IF IT WERE LOADED AND READY TO FIRE. ALWAYS KEEP THE MUZZLE OF YOUR SHOTGUN POINTED IN A SAFE DIRECTION.

REMEMBER, FROM THE MOMENT YOU PICK UP THE GUN YOUR LIFE AND THE LIVES OF OTHERS DEPEND ON YOU.

!!! THINK SAFETY FIRST !!!

TOP LEVER

The top lever operates the locking bolt and the cross bolt, and is used to brake open the action to load and/or unload, and to assemble and disassemble the shotgun.

The fully closed (7 o'clock position) of the top lever is shown at the Fig. 3 below.



Fig. 3 Top lever locked (fully closed) position

The locking bolt and barrel lugs are designed for the gradual wear of locking surfaces, and therefore it may exhibit tight fitting characteristics during initial use. The close tolerances of these locking surfaces, even with their gradual wear, ensure that the breech of your shotgun remains tight throughout use.

To break open the action, fully push the top lever to the right.



Fig. 4 Opening the action.



Fig. 5 Closing the action

Even though your shotgun is equipped with an additional AUTOMATIC SEARS SAFETY mechanism, WHEN OPERATING THE TOP LEVER, YOU MUST:



1. MOVE THE SAFETY BUTTON TO ITS REARWARD POSITION. LETTER "S" WILL APPEAR ON THE FRAME TANG IN FRONT OF THE SAFETY BUTTON.
2. KEEP YOUR FINGERS AWAY FROM THE TRIGGERS AND OUTSIDE OF THE TRIGGER GUARD.
3. KEEP THE MUZZLE POINTED IN A SAFE DIRECTION

When closing the breech of the action let the top lever move freely to its locked position (7 o'clock position). Do not restrain its travel with your thumb.

Regardless that the cross bolt would be fully flush with the frame after closing the breech, it is recommended that the top lever be indexed to the far left position using a slight pressure induced by one's finger or thumb in order to make sure that locking bolt is fully closed.

EXTRACTOR

Pioneer shotgun is fitted with an extractor. When the action is opened the fired shells are elevated above the chamber for removal by hand.

EXTERNAL HAMMERS

Your Pioneer shotgun is furnished with true external hammers located on both sides of the frame. The hammers must be manually cocked to fire the shotgun.

The Pioneer shotgun was designed for Cowboy Action Shooting competition and is equipped with the MANUAL SAFETY. Thus, safety will not engage automatically each time you brake open the action for reloading. This saves additional seconds on the stage. You do not need to move the safety to the OFF position after each reloading, but REMEMBER, regardless of all Pioneer's safety features listed above, YOU SHOULD:

 COCK THE HAMMERS WHEN YOU ARE ACCTUALLY READY TO SHOOT AND IN LINE WITH YOUR TARGET.

EXTERNAL FIRING PINS

The external firing pins are located on both sides of the upper part of the frame in front of the hammers.

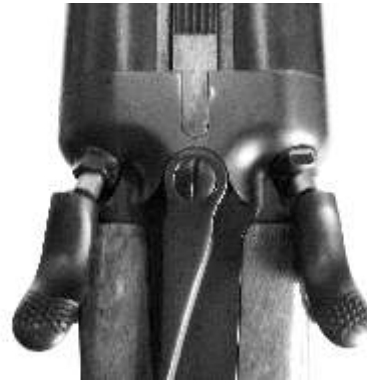


Fig. 6 Firing pins

TRIGGERS

On your shotgun each trigger operates its own barrel. The front (right) trigger will fire the right barrel and rear (left) trigger will fire the left barrel. Use your index finger to pull one trigger (customarily the right trigger) to fire the first shot. After the shot is fired, release the trigger and move your index finger to the other trigger to fire the second shot.

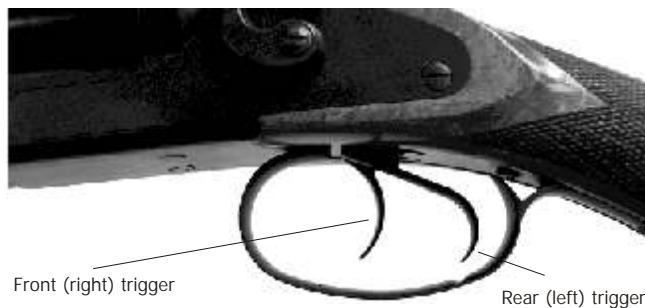


Fig. 7 Triggers



DO NOT PULL BOTH TRIGGERS AT THE SAME TIME IN ORDER TO AVOID EXCESSIVE RECOIL FROM SIMULTANEOUS DISCHARGE OF BOTH BARRELS.

DISSASSEMBLY

Your new Pioneer shotgun is shipped with the following:

- Owner's manual
- 16 Fields range target shot at the factory
- Additional materials may be added such as Pioneer accessories catalog or marketing research questionnaire.

The serial number is engraved on the water-face of frame on the underside of the barrels and at the top of the fore-end iron.

Please make a notation of this serial number on the first page of your owner's manual.

Remove all protective lubricants from exterior surfaces of your shotgun before initial disassembly.



BEFORE DISASSEMBLY OR ASSEMBLY MAKE SURE THAT THERE IS NO AMMUNITION IN EITHER CHAMBER AND MOVE THE SAFETY BUTTON TO ITS SAFE POSITION.

To disassemble the shotgun, grasp the barrels with your non-firing hand and rest the butt stock against the upper leg. Remove the fore-end away from the barrels in a downward outward swinging motion using your index finger of the firing hand. Grasp your shotgun with your firing hand around the stock's pistol grip and push the top lever to the right using your thumb to carefully open the action to rotate the barrels lug away from the frame hinge pin. Separate the barrels from the frame. The fore-end can be reattached to the barrels for storage.



Fig. 8 Removing Fore-end



Fig. 9 Removing Barrels

Use the clean rod, patches, solvent, and light gun oil to clean the interior of the barrel's bores. Use a cleaning cloth and light gun oil to remove protective lubricants from the metal parts on the frame, fore-end iron, and barrel assemblies.

After cleaning, place a couple of drops of gun oil or apply a small portion of gun grease on the hinge pin, barrel lugs, and fore-end iron bracket.

Further disassembly is not necessary for routine maintenance. Any damage incurred due to further disassembly is not covered by your service warranty.

 DO NOT ATTEMPT FURTHER DISSASSEMBLY BEYOND BARREL AND FORE-END REMOVAL.

ASSEMBLY



Fig. 10 Barrel Assembly

Grasp the barrels with your non-firing hand and connect the barrel lug hinge with the frame hinge pin. Use the thumb of your firing hand to move the top lever to its most right position.

Maintain pressure on the barrels to keep the hinge pin aligned with the barrel lug hinge pin recess, and rotate the barrels upward to close the action. Release the top lever at this time.

With the barrel assembly locked into the frame, you must attach the fore-end. Place the fore-end on the frame and with an upward swinging motion lock the fore-end onto the barrels.



Fig. 11 Closing the Action



Fig. 12 Fore-end Assembly

AMMUNITION

Use only the ammunition of the proper gauge and shell length. Your shotgun gauge and chamber designations are engraved on the underside of the barrels (See figure 11).

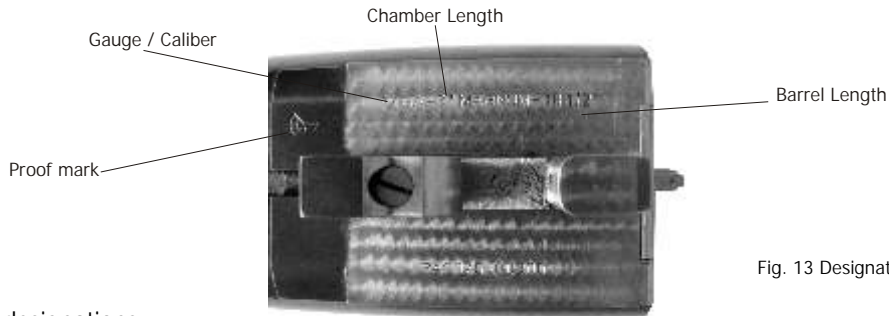
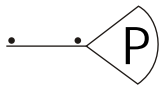


Fig. 13 Designation on the Underside of the Barrels

Explanations of designations

12 GA. gauge / caliber indicator

3 IN MAGNUM chamber length of 3 inches, which allows you to use 3 inch (76 mm) and 2 ¾ inch (70 mm) shotgun rounds.



proof mark, stamped on every barrels assembly, indicates that each barrel was shot with the proof load developing pressure of SAAMI (Sporting Arms and Ammunition Manufacturer's Institute) established standards, and that the complete shotgun was shot with proof loads developing the pressure in accordance with our factory standards.

Proof loads are designed to stress firearm components in order to assure safety for the recommended use of the firearm throughout its service life.

 **EVEN THE STRONGEST FIREARM MAY BE BLOWN UP AS A RESULT OF EXCESSIVE PRESSURE.**

The pressure that is formulated by proof loads is calculated based on the average pressure of regular service loads, thus the proof

mark indicates that your shotgun was tested in order to assure its safety only when using ammunition of the proper gauge (caliber), chamber length, and pressure not greater than that developed by ammunition loaded to factory standards.

LOADING AND UNLOADING

Before loading the shotgun, make sure that:

The shotgun is fully assembled and the fore-end is locked into the receiver and barrels.

The safety button is in the safe position. Never load the shotgun with the safety in the off safe position.

Avoid contact with the triggers while loading the ammunition and at all times prior to firing.

To insert shot shells into the chamber, move the top lever to the right with the thumb of your firing hand and open the breech. Inspect the chambers and barrel bores to be sure they are free of any obstruction. Insert proper ammunition in each chamber, making sure that shells are flush with extractor, and close the action. Be sure the round primer and rim is facing rearward when inserting shells in the chamber.

When you close the breech of the action, let the top lever move freely to its lock position. Do not restrain its travel with your thumb. It is recommended that the top lever be indexed to the left with slight pressure to make sure that the locking bolt is fully closed.

DO NOT MOVE SAFETY BUTTON TO ITS OFF SAFE POSITION UNTIL YOU ARE READY TO FIRE WITH THE BARRELS POINTED IN THE SAFE DIRECTION. DO NOT LOAD SHOTGUN UNTIL YOU ARE READY TO FIRE.

TREAT YOUR SHOTGUN AS IF IT WAS LOADED ALL TIMES.

Before unloading the shotgun, make sure the safety button is in the SAFE position. Move the top lever to the right to open the breech. Remove the shells from the chambers by grabbing them by the rim. Visually check the barrels to make sure they are free of any obstructions and close the breech of the action.

COCKING AND UN-COCKING

To cock, grab the shotgun with your firing hand around the stock's pistol grip while keeping your fingers away from the triggers. Place your thumb on the top (spur) of the right hammer. It is recommended to place your non-firing hand around the fore-end for better support.

Pull the hammer rearward until it locks in the cocked position. Next place your thumb on the top (spur) of the left hammer and pull it rearward until it locks in the cocked position.



Fig. 14 Cocking Hammers

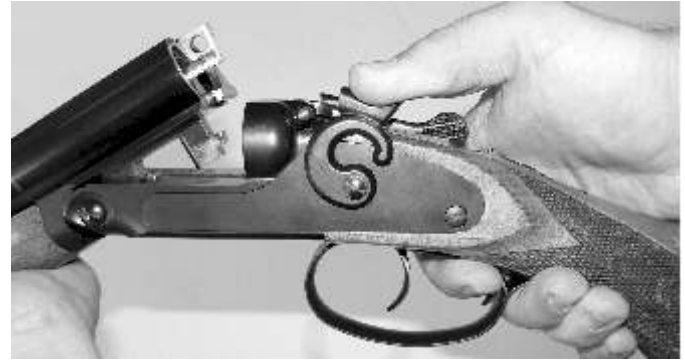


Fig. 15 Un-cocking Hammers

Keeping your shotgun pointed in a safe direction, or at your intended target, move the safety fully forward to its OFF SAFE position and pull the trigger of the barrel you want to shoot first.

To un-cock, move the top lever to the right to open the breech of the action. Remove any live rounds (follow the unloading instructions above). With the shotgun's breech open and properly unload, disengage the safety.

Place your thumb on the top (spur) of the right hammer. Holding the hammer firmly, pull the front (right) trigger and slowly lower the hammer to its resting position. Repeat this step with the left hammer. Close the breech of action and move the safety button to its SAFE position.



NEVER CARRY THE SHOTGUN WITH THE HAMMERS COCKED. IF YOU COCKED THE HAMMERS BUT HAVE NOT FIRED THE SHOTGUN, YOU MUST UN-COCK THE HAMMERS. FOLLOW THE UN-COCKING INSTRUCTIONS ABOVE USING EXTREME CAUTION. MAKE SURE THE SHOTGUN IS POINTED IN A SAFE DIRECTION THROUGHOUT THE UN-COCKING PROCESS.

CLEANING

Your Pioneer shotgun will perform more reliably over a longer period of time if properly cleaned and serviced.



NEVER CLEAN A LOADED SHOTGUN.

REMOVE AMMUNITION FROM THE CHAMBERS BEFORE PERFORMING ANY CLEANING PROCEDURES.

A light cleaning consists of oiling and wiping down the firearm, and requires light gun oil, a clean lint-free cloth, and a cleaning rod with patches.

Always wipe the barrels and action with a lightly lubricated cloth to remove fingerprints, dirt and, moisture from the shotgun after handling. Keep a light coat of gun oil on metal surfaces and moving parts. Clean inside the barrels with a cleaning rod and patches to remove fouling and residue caused by lead and plastic shot cups after shooting.

General cleaning shall be performed when lead or plastic residue cannot be removed during a light cleaning and would require light gun oil, gun grease, gunpowder solvent, and cleaning rod with patches and brass brush.

Detach fore-end and remove barrels from the frame according to disassembly instructions provided in this manual. Use a cleaning rod with a tip and patch suitable for use in shotgun bores. Lightly oil the patch and place it on the tip of the cleaning rod. Insert the tip of the cleaning rod with the attached patch into the chamber and push the patch back and forth through both barrels several times. Inspect the bores from both ends of the barrels for residue caused by leading and plastic shot cups. If the patch will not remove residue, use the bronze brush with gunpowder solvent.

First apply gunpowder solvent to the brush end and insert the cleaning rod into the chamber. Push the brush completely through the shotgun bore before pulling it backwards to avoid breaking the bristles on the brush. Continue this cleaning action until bores are clean.

When all fouling and residue is removed, push a clean dry patch through the bores with the cleaning rod to remove any remaining debris or solvent. When the bores are free of all solvent and debris, insert a lightly oiled patch and lubricate the bores.

Wipe the barrels, action, and metal surfaces of the fore-end iron with a clean and lightly lubricated cloth, which is lubricated with light gun oil. Apply a light coat of gun grease on the frame hinge, barrel lugs and fore-end iron brackets. Assemble barrels and fore-end, open and close the action a couple times, and remove excess grease.

FIRING

Make sure the shotgun is pointed in a safe direction and the safety button is in the Safe position.

Wear your eye and ear protection.

While keeping your fingers away from triggers, move the safety button to its OFF SAFE, firing position.

Cock the hammers as per cocking instruction above.

Hold your shotgun with your firing hand around the stock's pistol grip. Support it with your non-firing hand around the fore-end and with the butt stock held firmly against your shoulder while the barrels are pointed toward your intended target, place your finger on the trigger. The shotgun will fire when you pull the trigger with required force.

Move your finger to other trigger and pull it for firing.



Fig. 16 Firing

! MOVE THE SAFETY BUTTON TO ITS ON SAFE POSITION IMMEDIATELY AFTER YOU HAVE FIRED THE SHOTGUN. FOLLOW THE UNLOADING INSTRUCTIONS WHILE KEEPING MUZZLE POINTED IN A SAFE DIRECTION.

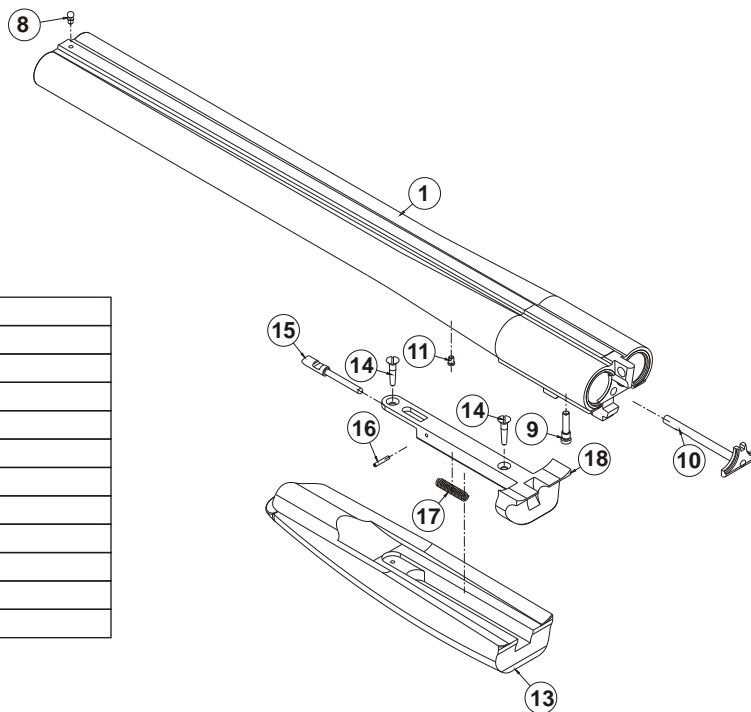
DRY FIRING

Dry firing, or pulling the triggers without live ammunition, is not recommended without the use of snap caps. Snap caps absorb the inertia of the firing pins and protect the gun's internal parts from the full impact force of hammers. Continuous dry firing can potentially damage the internal parts and render the shotgun inoperable.

Your stock and fore-end wood have an oiled finish. Do not use any solvent products to clean the stock and fore-end. Wipe them down with a clean and lightly oiled cloth. A stock wax may be used if desired.

PARTS LIST AND EXPLODED VIEW

BARREL AND FORE-END ASSEMBLY PARTS VIEW

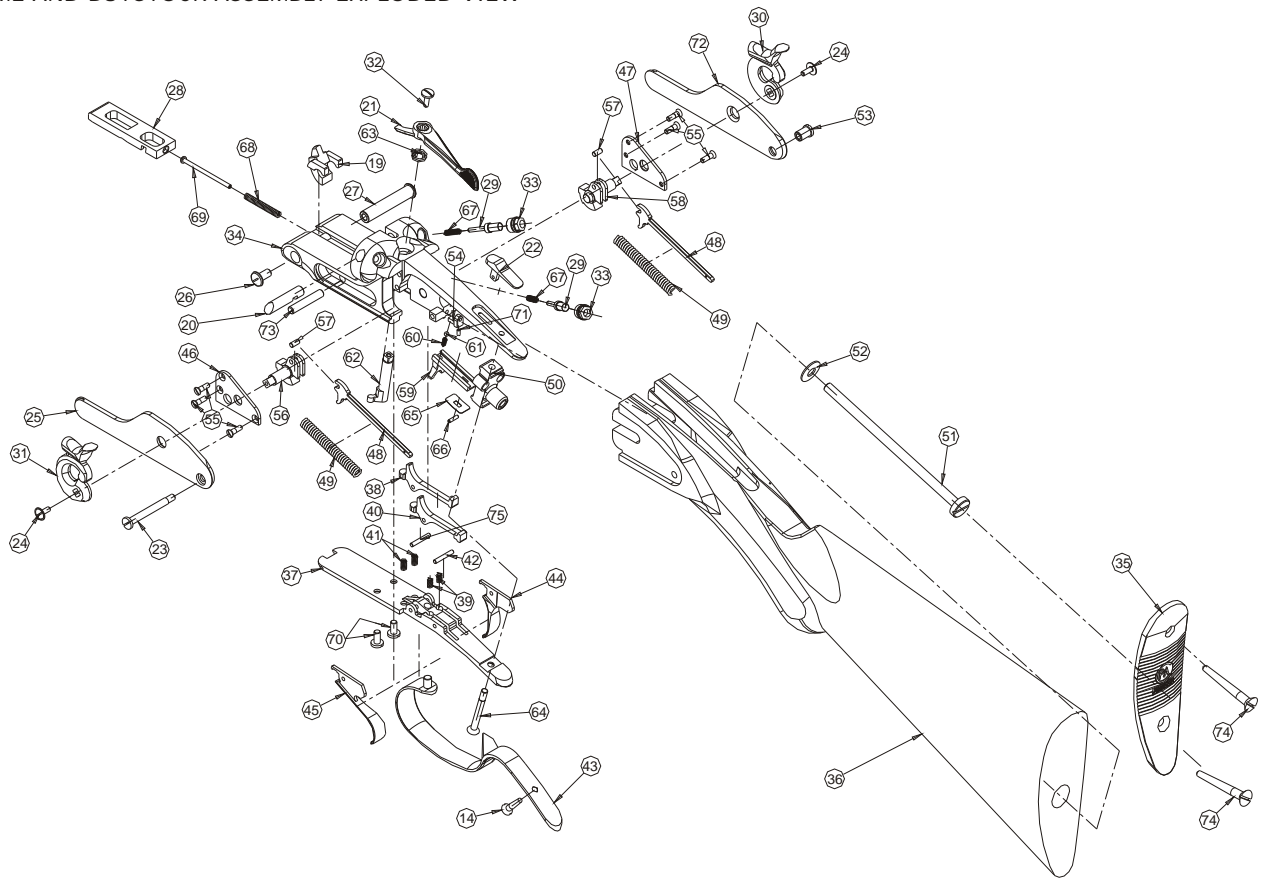


BARREL AND FORE-END ASSEMBLY PARTS LIST

ITEM NO.	PART NO.	PART NAME
1	100-10-000	Barrel Assembly
8	100-10-008	Front Sight
9	100-10-009	Extractor Screw
10	100-10-010	Extractor
11	100-10-011	Barrel Assembly Vent Screw
13	100-20-013	Fore-end Wood
14	100-20-014	Fore-end Iron Screw
15	100-20-015	Fore-end Fastener Bolt
16	100-20-016	Fore-end Fastener Bolt Pin
17	100-20-017	Fore-end Fastener Bolt Spring
18	100-20-018	Fore-end Iron

For part order refer to the PART NO. XXX-XX-XXX

FRAME AND BUTSTOCK ASSEMBLY EXPLODED VIEW



FRAME AND BUTSTOCK ASSEMBLY PARTS LIST

ITEM NO.	PART NO.	PART NAME
19	100-30-019	Extractor Pusher
20	100-30-020	Cross Bolt
21	100-30-021	Top Level
22	100-30-022	Safety Button
23	100-30-023	Side Plate Screw
24	100-30-024	Hammer Screw
25	100-30-025	Side Plate, Left
26	100-30-026	Hinge Pin Screw
27	100-30-027	Hinge Pin
28	100-30-028	Locking Bolt
29	100-30-029	Firing Pin
30	100-30-030	Hammer, Right
31	100-30-031	Hammer, Left
32	100-30-032	Top Lever Screw
33	100-30-033	Firing Pin Nipple
34	100-30-034	Frame
14	100-30-014	Fore-end Iron Screw / Trigger Guard Screw
35	100-31-035	Butt Plate
36	100-31-036	Butstock
37	100-32-037	Trigger Plate
38	100-32-038	Sear, Right
39	100-32-039	Trigger Spring
40	100-32-040	Sear, Left
41	100-32-041	Sear Spring
42	100-32-042	Trigger Pin
43	100-32-043	Trigger Guard
44	100-32-044	Trigger, Right
45	100-32-045	Trigger, Left
46	100-30-046	Bridle, Left

ITEM NO.	PART NO.	PART NAME
47	100-30-047	Bridle, Right
48	100-30-048	Mainspring Rod
49	100-30-049	Mainspring
50	100-30-050	Frame-Stock Connector
51	100-30-051	Stock Bolt
52	100-30-052	Stock Bolt Washer
53	100-30-053	Side Plate Screw Nut
54	100-30-054	Sear Safety
55	100-30-055	Bridle Screw
56	100-33-056	Tumbler, Left
57	100-33-057	Tumbler Pin
58	100-34-058	Tumbler, Right
59	100-35-059	Safety Laver
60	100-35-060	Safety Laver Spring
61	100-35-061	Ball 1/8"
62	100-30-062	Locking Bolt Lever
63	100-30-063	Top Lever Trip Spring
64	100-30-064	Frame-Stock Connector Screw
65	100-30-065	Safety Button Spring
66	100-30-066	Safety Button Pin
67	100-30-067	Firing Pin Spring
68	100-30-068	Locking Bolt Spring
69	100-30-069	Locking Bolt Rod
70	100-30-070	Trigger Plate Screw
71	100-30-071	Sear Safety Screw
72	100-30-072	Side Plate, Right
73	100-30-073	Barrel Lug Anchor Pin
74	100-31-074	Butt Plate Screw
75	100-32-075	Sear Pin

For part order refer to the PART NO. XXX-XX-XXX

NOTES

NOTES

**PIONEER WARRANTY
THREE (3) YEARS LIMITED WARRANTY**

Pioneer Arms Corp., warrants to the original retail purchaser, that the Pioneer shotgun will be free of defects in material and workmanship for a period of three (3) years from the date of purchase. The warranty on wood stock and fore-end is limited to a period of one (1) year and covers only workmanship and material defects.

During the warranty period Pioneer Arms Corp. will, at its sole option, repair the Pioneer shotgun without charge for parts or labor, or replace the shotgun with a new or similar model.

This warranty does not cover the cosmetic appearance of the Pioneer shotgun or any damage caused by abuse, misuse, neglect, and alternations or modifications of the firearm.

For Pioneer firearm parts and service please contact the closest Pioneer dealer or distributor.

PIONEER ARMS CORP.



Pioneer Arms Corp.

1905 Roku 1/9 Street, 26-612 Radom, Poland

European Comity

Tel.: +48 (48) 383 0775, Fax: +48 (48) 383 0776

www.pioner-pac.com, contact@pioneer-pac.com

Pioneer trademark is licensed from the Pioneer Arms Corp., Moline, Il., U.S.A.

www.pioneer-pac.com