

NORINCO JW—15



BOLT ACTION .22 CALIBER RIFLE

INSTRUCTION AND SAFETY MANUAL

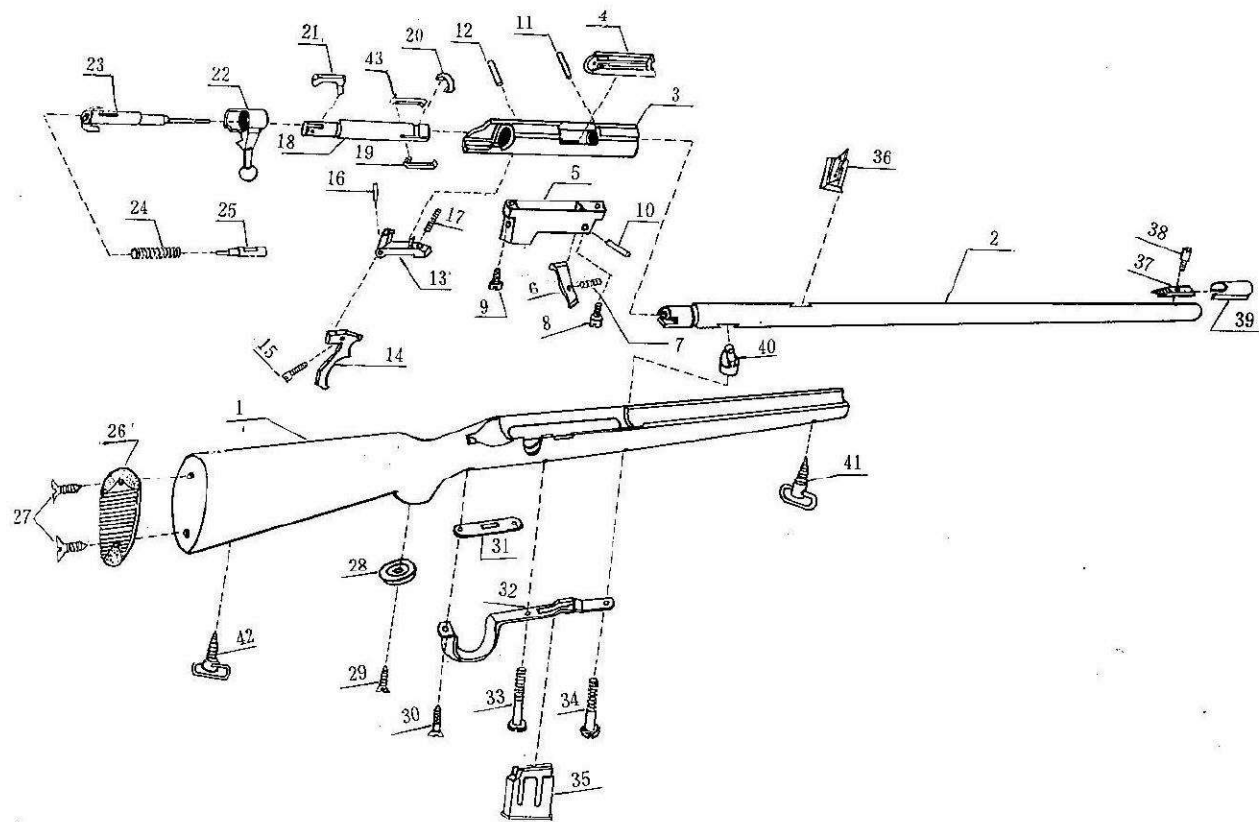
READ CAREFULLY BEFORE
USING THIS FIREARM

TECHNICAL SPECIFICATIONS

NORINCO JW-15 BOLT ACTION RIFLE

Caliber	.22 Long Rifle ONLY
Length, overall	41-3/4"
Barrel length	24"
Weight	5-3/4 lbs.
Magazine capacity	5 cartridges

NOTE: In this manual, LEFT, RIGHT, FRONT AND REAR refer to the rifle as seen by a shooter holding it in the firing position.



1 Stock
2 Barrel
3 Receiver
4 Cartridge platform/ ejector
5 Box frame for magazine
6 Magazine latch
7 Magazine latch spring
8 Box frame retaining screw(front)
9 Box frame retaining screw(rear)
10 Magazine latch pin
11 Barrel retainer pin
12 Sear pin
13 Sear
14 Trigger
15 Trigger adj. screw
16 Trigger pin
17 Sear spring
18 Breech bolt
19 Right extractor
20 Extractor retainer spring
21 Safety lever
22 Bolt handle

PARTS LEGEND

23 Firing pin
24 Mainspring
25 Mainspring retainer
26 Butt plate
27 Butt plate screws
28 Grip cap
29 Grip cap screw
30 Trigger guard bow screw
31 plate cover
32 Trigger guard bow
33 Receiver/ guard bow screw
34 Stock stud screw
35 Magazine
36 Rear sight
37 Front sight
38 Front sight screw
39 Front sight hood
40 Stock stud
41 Stock swivel bow
42 Stock swivel bow
43 Left extractor

LOADING THE MAGAZINE

Remove the magazine from the rifle by pressing the magazine catch rearward. Load the magazine with five cartridges by pressing each cartridge into the magazine with two motions: first DOWN to compress the magazine spring, then REARWARD to slide the cartridge under the magazine lips. The rim of each succeeding cartridge should be positioned in FRONT of the one below it.

CAUTION: Damaged or bent magazine lips will cause malfunctions. **DO NOT USE FORCE.** Reinsert the magazine into the rifle until it is caught by the magazine latch.

LOADING THE CHAMBER

In order to fire, a cartridge must now be loaded from the magazine into the barrel chamber. Open the bolt by lifting the bolt handle and pulling the bolt rearward until it stops, then push the bolt back forward and turn the handle down to its original position. The firing pin is cocked as the bolt handle is lifted; as the bolt is pushed forward on the return stroke, it picks up the top cartridge in the magazine and feeds it into the chamber for firing. The rifle is now ready to fire.

WARNING: To minimize any risk of accidental firing, leave the barrel chamber empty until you are ready to shoot. Only then should you load a cartridge from the magazine into the barrel chamber. Whenever the chamber is loaded, always turn the safety lever "ON" and leave it in that position until you want to shoot and have pointed the rifle at the target. (See instructions for Use of the Safety)

UNLOADING

Point the rifle in a safe direction. Remove the magazine, then open the bolt and pull it smartly to the rear. This will eject any unfired cartridge present in the chamber. Leave the bolt open for safety.

WARNING: ALWAYS LOOK IN THE CHAMBER TO MAKE SURE THE CARTRIDGE HAS BEEN EJECTED AND THAT THE CHAMBER IS EMPTY.

Empty the magazine by pushing each cartridge forward until it is no longer held by the magazine lips.

Note that in the unloading procedure, the magazine is removed **FIRST**. This is to ensure that during subsequent manipulation of the bolt, another cartridge is not inadvertently fed into the chamber.

USE OF THE SAFETY

The Safety consists of a lever on the top of the rearmost portion of the bolt. It is "ON"

when the lever is turned about 45 degrees to the right (see illustrations). It is "OFF" when the lever is turned so that it points directly rearward, in line with the buttstock.

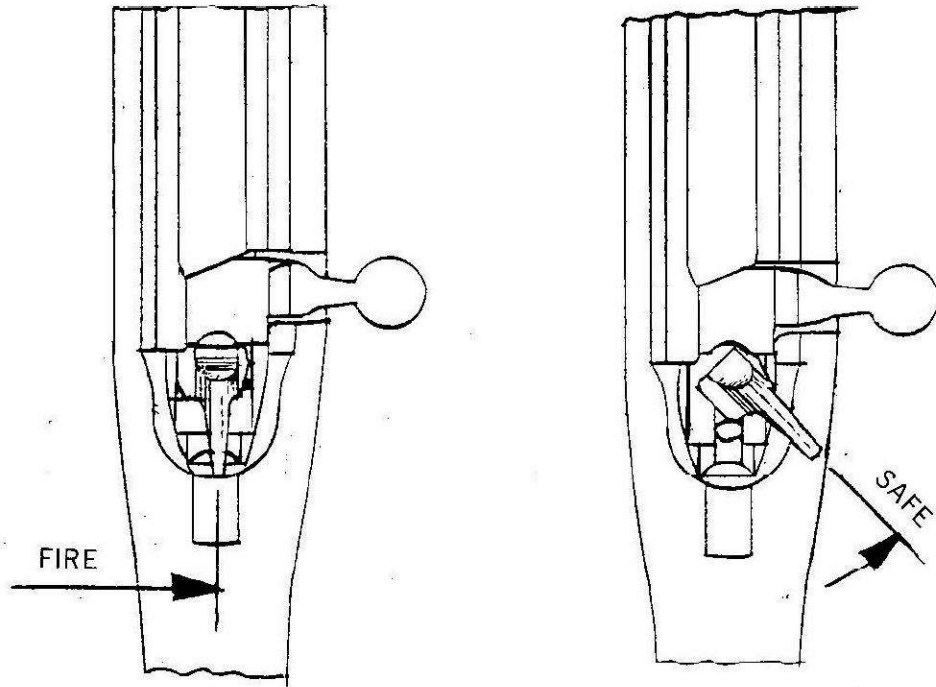
The safety can be placed "ON" only when the rifle is cocked. In the "ON" position, it locks the firing pin so that the rifle cannot be fired by pulling the trigger. While "ON", the safety also locks the bolt handle in the closed position. This is to prevent accidental opening of the bolt by branches, etc. when walking through heavy brush.

Whenever a cartridge is loaded in the barrel chamber, the safety should be "ON" at all times, except when you are in the process of shooting or unloading the rifle.

WARNING: Notice that when turning the safety lever "ON", a detent, or point of resistance, will be felt near the end of its arc of movement. **CONTINUE PUSHING THE LEVER PAST THIS POINT OF RESISTANCE, AS FAR AS IT WILL GO.** Otherwise, the safety may not be securely "ON". (This detent is deliberately incorporated to keep the safety lever from being accidentally brushed to the "OFF" position.)

WARNING: Do not touch the trigger while operating the safety lever! Pulling the trigger while the safety lever is being turned "OFF" will cause the firing pin to be released as soon as the "OFF" position is reached; if a cartridge is present in the chamber, the rifle will fire.

USE OF THE SAFETY



BE CAREFUL: ALWAYS POINT THE RIFLE IN A SAFE DIRECTION WHEN OPERATING THE SAFETY!

FIRING

With a cartridge loaded in the barrel chamber and the safety "ON": Point the rifle in the direction of the target, turn the safety "OFF", aim, and fire by pulling the trigger. To fire the next shot, open the bolt as before and pull it smartly to the rear. This cocks the firing mechanism and ejects the spent cartridge case from the previous shot. Pushing the bolt forward again feeds the next cartridge into the chamber, and turning the bolt handle downward closes the bolt. The rifle is now ready to fire again. This process can be repeated until the rifle is empty.

If you wish to temporarily cease firing before the rifle is empty, immediately turn the safety lever "ON".

If you have finished shooting, IMMEDIATELY, make the rifle safe by UNLOADING IT COMPLETELY.

Extensive dry firing (snapping the firing mechanism without a cartridge in the chamber) is not recommended as it may result in breakage of the firing pin or damage to the rear of the chamber. WITH THE CHAMBER EMPTY, the rifle may be uncocked without dry firing by lifting the bolt handle, pressing the trigger, then lowering the bolt handle.

WARNING: NEVER UNCOCK THE RIFLE WITH A CARTRIDGE IN THE CHAMBER, AS THE FIRING PIN WILL THEN BE RESTING ON THE RIM OF THE CHAMBERED CARTRIDGE. THIS IS AN UNSAFE CONDITION, SINCE AN IMPACT ON THE BOLT CAN THEN CAUSE THE RIFLE TO FIRE ACCIDENTALLY WITHOUT THE TRIGGER BEING PULLED.

SIGHTS

Before firing your rifle, set the rear sight elevation for the distance of the target. The rear sight elevator has six steps, the lowest being set for a range of approximately 25 yards. Each higher step increases the setting by an additional 25 yards.

To change the setting, unload the rifle. Lift up slightly on the rear sight leaf to relieve spring tension on the rear sight elevator. Placing your thumb on the curved serrated surface at the front of the elevator, push the elevator forward or backward to engage a higher or lower step as desired. Let down the rear sight leaf to lock the adjustment.

If windage adjustment is necessary (i.e., if the bullets strike to the right or left of the point of aim), the rear sight can be adjusted by tapping it sideways in its dovetail slot. Use a brass drift to avoid marring the finish. A helpful rule to remember is: **ALWAYS MOVE THE REAR SIGHT IN THE DIRECTION YOU WISH TO SHIFT THE POINT OF IMPACT.** For example, if the rifle shoots to the right, the point of impact must be shifted leftward. Therefore, move the rear sight to the left.

DISASSEMBLY

FIRST MAKE SURE THE RIFLE IS UNLOADED. Pull the open bolt fully to the rear. While pressing the trigger, continue pulling the bolt rearward and out of the rifle. It is seldom necessary to dismantle the bolt, as routine cleaning can be accomplished by brushing and wiping off its exterior. However, should more thorough cleaning be needed, proceed as follows:

WARNING: THE BOLT MAINSPRING IS STRONG. WEAR SAFETY GLASSES TO PREVENT EYE INJURY IN CASE ANY PART UNDER SPRING TENSION ESCAPES FROM YOUR GRASP.

Remove the bolt from the rifle. Holding the bolt firmly in one hand, rotate the bolt handle 90 degrees clockwise (viewed from the rear, see Fig. A) so that the tip of the firing pin emerges from its hole in the front of the bolt. Depress the mainspring retainer (the 1/4" diameter button on the rear of the bolt under the safety lever) by pressing it against a firmly supported wood or soft metal object (Fig. B). This will free the safety so that it can be pulled out of the bolt with the other hand (Fig. C). Slowly release your hand pressure on the bolt. The mainspring retainer, mainspring firing pin and bolt handle can now be removed. Reassemble the bolt in reverse order, reinstalling the safety lever while depressing the mainspring retainer as before. Make sure the safety is securely held by pressing the lever fully home in the "OFF" position.

To remove the the barrel and receiver group from the stock, take out the magazine and remove the two screws in front of the trigger guard. If necessary gently tap the underside of the barrel until it separates from the stock.

DISASSEMBLY

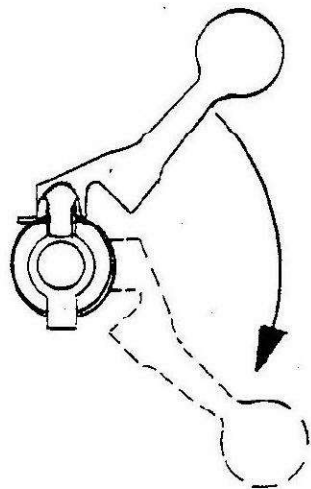


Fig. A

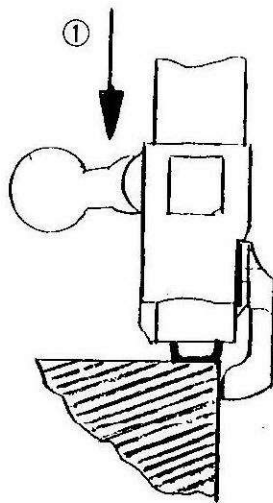


Fig. B

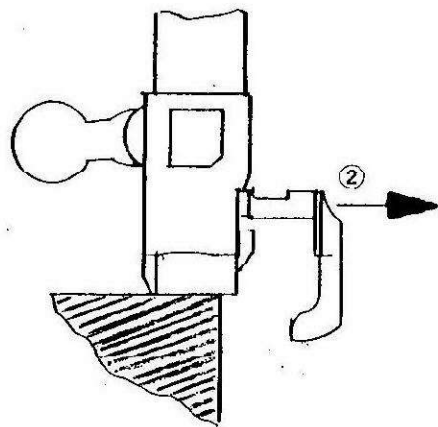


Fig. C

CLEANING AND OILING

Using a cleaning rod, cloth patches and nitro solvent, wipe out the bore until the patches come out clean. Always insert the cleaning rod from the chamber end to prevent wear on the rifling at the muzzle.

Take particular care to thoroughly clean the barrel chamber and the face (i.e., the front) of the bolt. Use a bronze bristle bore brush to remove wax, leading and powder residue from the barrel chamber. A sharpened stick or an old toothbrush can be utilized to clean carbon and other debris from crevases in the bolt face, especially under the extractor hooks. Be sure to remove any fouling from the extractor recesses in the rear of the barrel. Wipe out the bolt raceway inside the receiver.

Pass an oily patch through the clean bore to protect it until the rifle is to be used again. Lubricate the bolt with a light film of good gun oil. An oily rag wiped over all external metal surfaces of the rifle will prevent rust from handling.

Before using the rifle again, pass a dry patch through the bore to remove all oil and other residue. Make sure the bore is clear of any obstruction before loading the rifle.