

# MOSSBERG

# MODEL 500

## Pump Action Shotguns

**THIS MANUAL  
COVERS MODELS;**

**12 Ga. 500A, AR, APR, APTR, AT, ATV, AS, AM, AMR, AK, AKR**

**16 Ga. 500B**

**20 Ga. 500C, CR, CPR, CT, CTV, CK, CKR**

**410 Ga. 500E, ER, EPR, ET, ETV**

### FEATURES

1. **RECEIVER:** Forged alloy, light, but strong.
2. **BARREL:** Gun quality steel, proof tested. Interchangeable, instantly, without tools. For all standard factory loaded shells.
3. **BOLT:** Locks into barrel extension.
4. **TRIGGER:** Disconnecting, no inadvertant double fires.
5. **SAFETY:** "On Top" right under thumb.
6. **ACTION:** Smooth, fast, reliable. Easy loading, straight line feed.
7. **MAGAZINE CAPACITY:** 5 shots (2 $\frac{1}{4}$ " shells) plus 1 shot in chamber.
8. **MAGAZINE PLUG:** With each gun, allows 2 shells only in Magazine to conform with Federal Migratory Bird Law - 3 shots.
9. **STOCK:** STANDARD - 14" length, drop at comb; 1 $\frac{1}{2}$ ", drop at heel; 2 $\frac{1}{2}$ ". TRAP STOCK - 14" length, drop at comb; 1-3/8", drop at heel; 1-7/8".
10. **WEIGHT:** About 6 $\frac{3}{4}$  lbs.

**NOTE:** This Manual covers current models. For information on models not listed, contact our Customer Service Department.

**SAFETY  
WARNING**

**SAFETY WARNING:**

These warnings are for your protection as well as the safety of others. Disregarding safety warnings may result in serious injury.



Use the correct ammunition referenced by the stampings on the barrel.



Mossberg firearms are designed, manufactured and proof tested to standards based on factory loaded ammunition. Improperly loaded handloads can be dangerous. O.F. Mossberg & Sons Inc. cannot assume responsibility for damages or injury caused by handloads or reloaded ammunition.



Always point muzzle in a safe direction when using live ammunition. Become thoroughly familiar with your new gun and its operating instructions. Get accustomed to the feel—the force required to operate the action—and to pull the trigger. Most important, learn the location of the safety and how it operates.



Your finger should be completely off the trigger on your gun while operating the action and until breech bolt is fully forward in locked position.

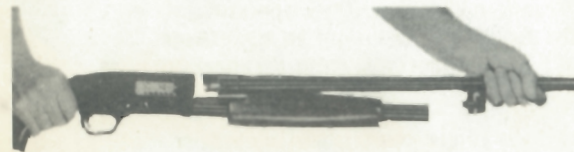


Be sure that the inside of the barrel and chamber are clean and free of grease and other obstructions before firing your gun.



Gun Maintenance—Make sure all exposed surfaces are coated with a film of oil. After being exposed to damp weather, wipe bore and metal surfaces thoroughly and apply new film of oil. Should your gun be exposed to heavy rain, snow, or salt spray a more thorough cleaning is required calling for removal of bolt assembly and trigger guard. SEE DISASSEMBLY SECTION of booklet. Between seasons apply grease to bore and other metal parts and store in a dry place. DO NOT PLUG BARREL or store gun in a fabric lined case which will absorb lubricants from gun.

MOSSBERG  
MODEL 500



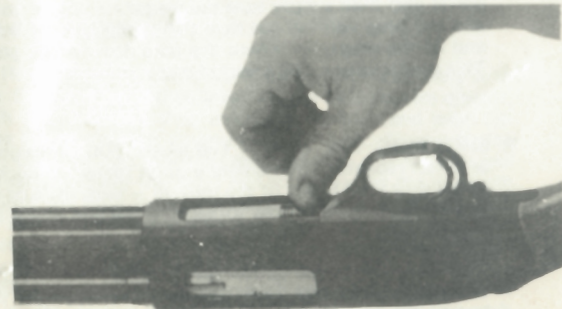
**1. TO INSTALL BARREL** — Open the action about one inch, slide the barrel into the receiver and tighten the take down screw, finger tight only. DO NOT use pliers or a wrench to tighten the take down screw. A little space between the magazine tube and the take down stud is normal.



**2. SAFETY** — The safety is located on top of the receiver near the stock. To put on safe pull the safety back to cover the red dot. To take off safe — push the safety forward. When the red dot can be seen the gun is off safe and can be fired.



**3. TO LOAD** — With the safety ON, open action fully by pressing up on the action lock lever at the rear of the trigger guard on left side and pulling back on the forearm. Drop one shell into open port on right side of receiver and close the action which puts shell into chamber. Feed shells into magazine from easy loading platform. Magazine holds five 2½" shells or four 3" shells or two of either with 8½" wood plug in magazine. (no 3" shells on 16 Gauge).



Always put safety in on position when through firing.

SAFETY WARNING

4. TO REMOVE LOADED SHELL FROM CHAMBER OR TO OPERATE ACTION WITHOUT SHOOTING— With safety on, press up on Action Lock Lever at rear of trigger on left side and work forearm back and forth.

SAFETY WARNING

5. TO REMOVE LOADED SHELLS FROM MAGAZINE — With safety on, turn gun over and insert thumb into loading opening in receiver and depress cartridge stop on right side of receiver. By repeating this operation you will be able to easily remove one shell at a time. This is much handier and safer than pumping the shells thru the action.

6. WOOD PLUG FOR 3-SHOT MIGRATORY BIRD LAW — This gun has an 8½" x 5/16" wood plug inserted in the magazine to reduce the magazine capacity to 2 shots. These with the one shell in the chamber make three shots. To take out this plug, first remove the barrel and then simply turn the magazine upside down and the plug will fall out thru the opening in the front end of the magazine where the take down screw goes. This plug is very easily inserted and removed.

7. SHOOTING THE GUN — The Model 500 is designed as a fast repeater. Immediately upon firing, as quickly as the shot load is out of the muzzle — with little or no rearward pressure on the forearm — the gun opens for a quick repeat shot.

However, fast as the action seems to be, the bolt continues to be locked until the peak pressure (in the barrel) has past and the shot pellets are on the way to the target.

## TO DISASSEMBLE

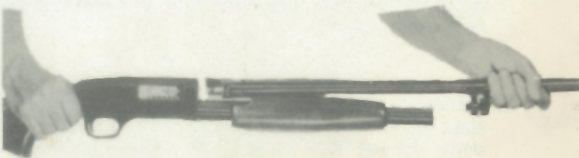
SAFETY WARNING

### Be Sure Gun is Not Loaded

1. Open action about one inch. Loosen take down screw. If you cannot loosen the take down screw with your fingers, be sure the gun is not loaded, then stand the gun up with the bottom end of the butt plate touching the ground. Now grasp the barrel and press down toward the stock at the same time turn the take down screw.



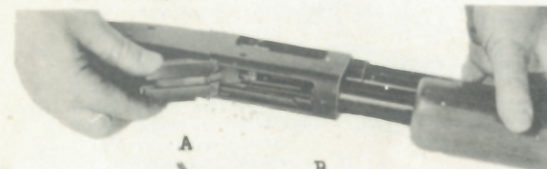
2. Remove Barrel.



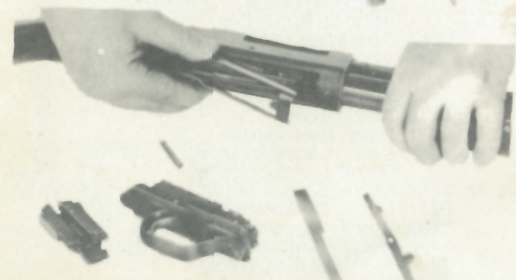
3. Remove trigger housing pin, and lift out trigger housing.



4. Remove bolt-slide "A", cartridge-stop "B" and Cartridge-interrupter "C".



5. Compress and remove elevator.



6. Remove bolt.

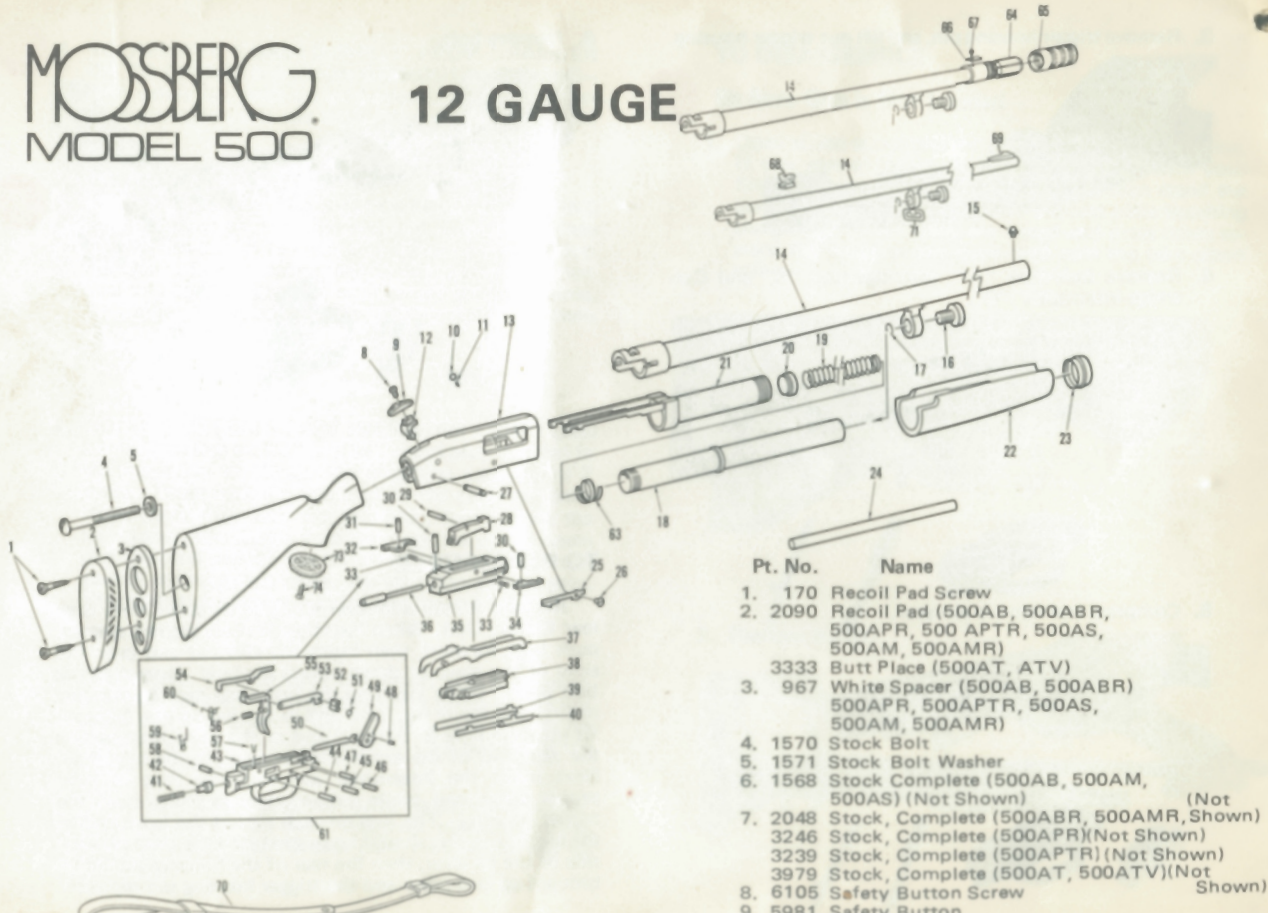


## TO REASSEMBLE

Replace the parts in reverse order. Be sure Safety is to rear (Safety ON). When inserting the bolt depress ejector, push bolt forward, then insert the elevator and push the sides of the elevator down beside the bolt. Now slide the bolt back. When inserting the bolt-slide put the rear end in first and lower the front end so the lug on the slide will fit into the hole in the bolt and at the same time be sure the rear end of the action-slide engages in the bolt-slide. Next insert the interrupter and cartridge stop in their proper places and, while holding them in place, insert the trigger housing. The lugs on each side of the front end of the trigger housing should be pushed into the slots on each side of the receiver, then the rear of the housing should be brought up into place and the trigger housing pin replaced.

# MOSSBERG MODEL 500

## 12 GAUGE



Pt. No.	Name
1.	170 Recoil Pad Screw
2.	2090 Recoil Pad (500AB, 500ABR, 500APR, 500 APTR, 500AS, 500AM, 500AMR)
3.	3333 Butt Place (500AT, ATV)
3.	967 White Spacer (500AB, 500ABR, 500APR, 500APTR, 500AS, 500AM, 500AMR)
4.	1570 Stock Bolt
5.	1571 Stock Bolt Washer
6.	1568 Stock Complete (500AB, 500AM, 500AS) (Not Shown)
7.	2048 Stock, Complete (500ABR, 500AMR, Shown)
	3246 Stock, Complete (500APR)(Not Shown)
	3239 Stock, Complete (500APTR)(Not Shown)
	3979 Stock, Complete (500AT, 500ATV)(Not Shown)
8.	6105 Safety Button Screw
9.	5981 Safety Button

(Not

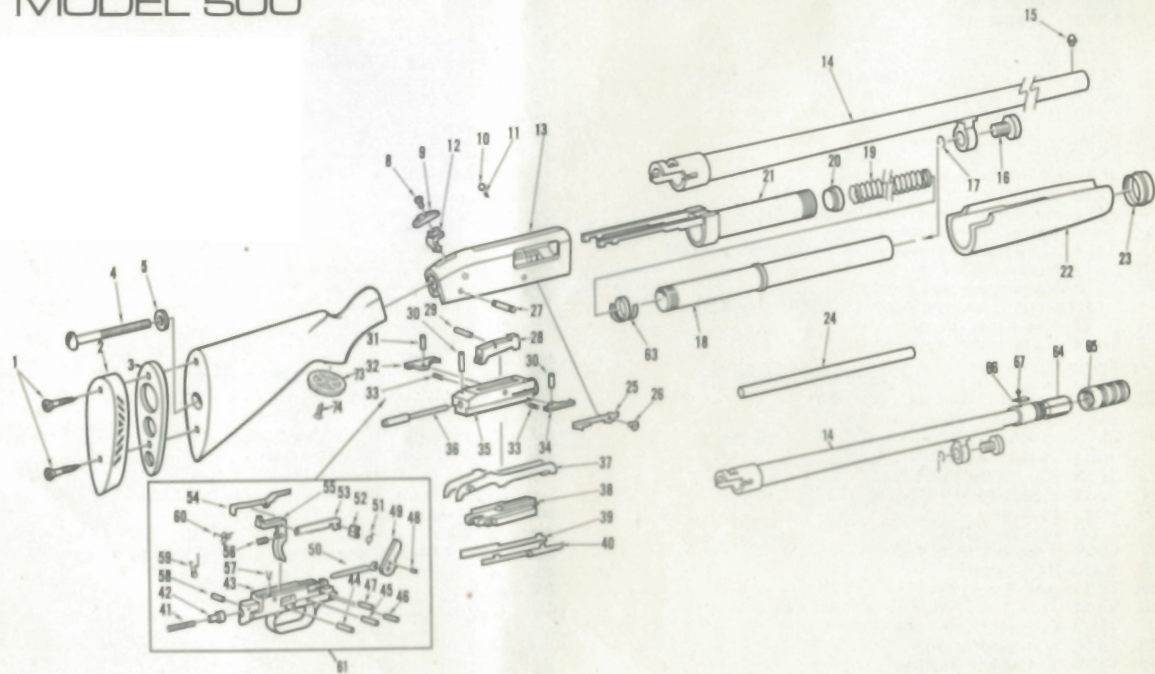
Shown)

Pt. No.	Name	Pt. No.	Name
10.	1561 Safety Click Ball	36.	2303 Firing Pin
11.	1562 Safety Click Spring	37.	1765 Elevator Assy. (Plain)
12.	3311 Safety Lock		5482 Elevator Assy. (Roll Damascene Chrome)
*13.	3993 Receiver Assy. (500AB)		2772 Elevator Assy. (Hand Damascene Chrome)
	3999 Receiver Assy. (500ABR)	38.	2863 Bolt Slide
	5712 Receiver Assy. (500AM)	39.	1533 Cartridge Stop
	5714 Receiver Assy. (500 AMR)	40.	1588 Cartridge Inter. Assy.
	5715 Receiver Assy. (500APR)	41.	1363 Mainspring
	5716 Receiver Assy. (500 APTR)	42.	1556 Mainspring Plunger
	4606 Receiver Assy. (500AT, 500ATV)	43.	1579 Trigger Housing
	5713 Receiver Assy. (500AS)	44.	1578 Trigger Pin
14.	SEE BARREL PAGE	45.	1516 Action Lock Pin
15.	2322 Front Sight (Plain Barrel)	46.	1516 Sear Pin
	2046 Front Sight (Rib Barrel)	47.	1998 Hammer Pin
	2750 Red Front Sight (APR, APTR)	48.	1567 Mainspring Guide Pin
	2751 Red Center Sight (APR, APTR)	49.	3945 Hammer Assy.
16.	3874 Take Down Screw Assy.	50.	1965 Mainspring Guide
	3315 Take Down Screw Assy. (500APR, APTR)	51.	1564 Sear Spring
17.	5393 Retaining Ring	*52.	1820 Sear
18.	3410 Magazine Tube Assy.	*53.	1819 Disconnecter
	3309 Magazine Tube Assy. (500APR, APTR)	54.	1515 Action Lock
19.	1553 Magazine Spring	*55.	1577 Trigger (Blued)
20.	1554 Magazine Follower		3236 Trigger (Gold)
21.	3467 Action Slide Assy	56.	1565 Trigger Spring
	3516 Action Slide Assy (500APR, APTR)	57.	1909 Trig. Hous. Pin Ret. Spring
22.	3049 Forearm (500AB, AM, AS)	58.	1557 Mainspring Ret. Pin
	3426 Forearm (500ABR, AMR)	59.	1966 Action Lock Hammer Spring
	3243 Forearm (500APR, APTR)	60.	1996 Action Lock Disconnecter Spring
	4605 Forearm (500AT, ATV)	*61.	1576 Trigger Housing Assy.
23.	3408 Act. Slide Tube Nut		3317 Trigger Housing (500APR, APTR)
24.	1631 Magazine Wood Plug	* —	4006 Trigger Housing Assy. (500APR, APTR)
25.	1538 Ejector	63.	1522 Action Slide Spring
26.	1539 Ejector Screw	*64.	947 Choke Tube
27.	1580 Trigger Housing Pin	65.	948 Choke Sleeve
*28.	2864 Bolt Lock	66.	649 Index Plate
29.	1531 Bolt Lock Pin	67.	2341 Front Sight
30.	1544 Firing Pin Ret.Pin & R.H. Ext. Pin	68.	2347 Rear Sight Assy.
31.	1599 Extractor Ret. Pin L.H.	69.	2346 Front Sight
32.	1842 L.H. Extractor	70.	2334 Web Sling
33.	1585 Extractor Spring	71.	5735 Front Swivel
34.	1841 R.H. Extractor (Plain)	72.	2093 Rear Swivel Slugster
	4682 R.H. Extractor (Chrome)	73.	1358 Grip Cap
*35.	3433 Bolt Plain	74.	112 Grip Cap Screw
	5162 Bolt (Roll Damascene Chrome)	75.	1174 White G. Cap Spacer (NOT SHOWN)
	3064 Bolt (Hand Damascene Chrome)		

Parts marked with an Asterisk (\*) are Restricted to Gunsmiths, Warranty Stations or the Factory for installation.

# MOSSBERG MODEL 500

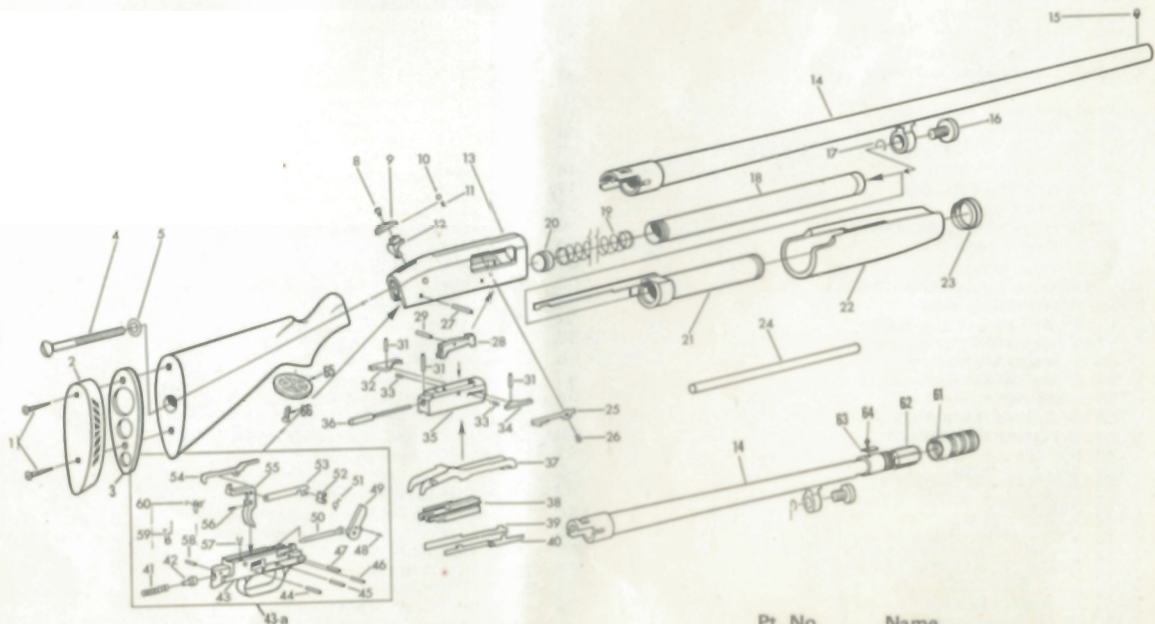
## 16 GAUGE



Pt. No.	Name	Pt. No.	Name
1.	170 Recoil Pad Screw	36.	2303 Firing Pin
2.	2090 Recoil Pad	37.	1872 Elevator Assy.
3.	967 White Spacer	38.	2863 Bolt Slide
4.	1570 Stock Bolt	39.	1869 Cartridge Stop
5.	1571 Stock Bolt Washer	40.	1870 Cartridge Inter. Assy.
6.	1568 Stock Complete (NOT SHOWN)	41.	1363 Mainspring
7.	—	42.	1556 Mainspring Plunger
8.	6105 Safety Button Screw	43.	1579 Trigger Housing
9.	5981 Safety Button	44.	1578 Trigger Pin
	6297 Safety Detent Plate (NOT SHOWN)	45.	1516 Action Lock Pin
10.	1561 Safety Click Ball	46.	1516 Sear Pin
11.	1562 Safety Click Spring	47.	1998 Hammer Pin
12.	3311 Safety Lock	48.	1567 Spring Guide Pin
* 13.	3984 Receiver Assy. (500BB)	49.	3945 Hammer Assy.
14.	SEE BARREL PAGE	50.	1965 Mainspring Guide
15.	2322 Front Sight	51.	1564 Sear Spring
16.	3874 Take Down Screw Assy.	* 52.	1820 Sear
17.	5393 Retaining Ring	* 53.	1819 Disconnecter
18.	3410 Magazine Tube Assy.	54.	1515 Action Lock
19.	1553 Magazine Spring	* 55.	1577 Trigger
20.	1554 Magazine Follower	56.	1565 Trigger Spring
21.	3467 Action Slide Assy.	57.	1909 Trig. Hous. Pin Ret. Spring
22.	3049 Forearm	58.	1557 Mainspring Ret. Pin
23.	3408 Act. Slide Tube Nut	59.	1966 Action Lock Hammer Spring
24.	1631 Magazine Wood Plug	60.	1996 Action Lock Disconnect Spring
25.	1538 Ejector	* 61.	1576 Trig. Housing Assy.
26.	1539 Ejector Screw	62.	—
27.	1580 Trig. Housing Pin	63.	1522 Action Slide Spring
* 28.	2864 Bolt Lock	* 64.	652 Choke Tube
29.	1531 Bolt Lock Pin	65.	647 Choke Sleeve
30.	1544 Firing Pin Ret. Pin & R.H. Ext. Pin	66.	649 Index Plate
31.	1599 Extractor Retaining Pin L.H.	67.	2341 Front Sight
32.	1875 L. H. Extractor	73.	1358 Grip Cap
33.	1585 Extractor Spring	74.	112 Grip Cap Screw
34.	1874 R. H. Extractor	75.	1174 White G. Cap Spacer (NOT SHOWN)
* 35.	3430 Bolt		

**MOSSBERG**  
MODEL 500

# 20 GAUGE



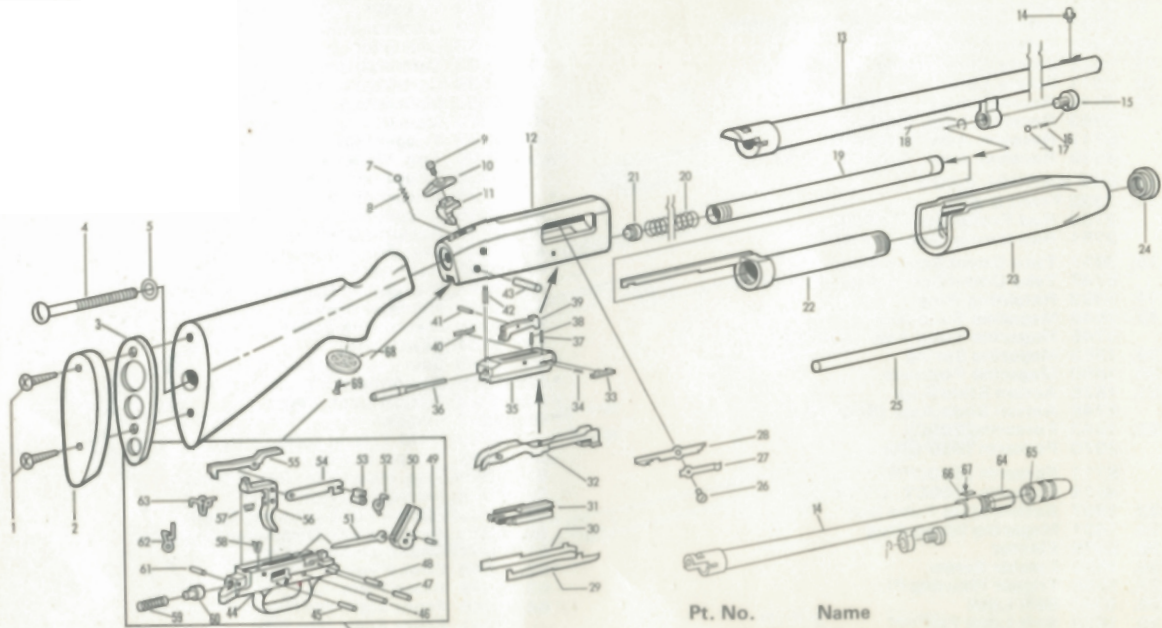
- | Pt. No. | Name  |
|---------|---|
| 1.      | 170 Recoil Pad Screw  |
| 2.      | 2090 Recoil Pad (500C, 500CR, 500CPR)<br>3333 Butt Plate (500 CT, 500CTV) |
| 3.      | 967 White Spacer (500C, CR, CPR)  |

- | Pt. No. | Name  | Pt. No. | Name  |
|---------|---|---------|---|
| 4.      | 1570 Stock Bolt   | 33.     | 1585 Extractor Springs  |
| 5.      | 1571 Stock Bolt Washer  | 34.     | 4682 R. H. Extractor (Chrome)<br>1841 R. H. Extractor   |
| 6.      | 1852 Stock Complete (500C) (NOT SHOWN)<br>2050 Stock Complete (500CR) (NOT SHOWN)<br>5709 Stock Complete (500CPR) (NOT SHOWN)<br>3585 Stock Complete (500CT, CTV) (NOT SHOWN) | * 35.   | 1978 Bolt (Plain)<br>5163 Bolt (Roll Damascened Chrome)<br>5688 Bolt (Hand Damascened Chrome)                           |
| 7.      |   | 36.     | 2303 Firing Pin   |
| 8.      | 6105 Safety Button Screw  | 37.     | 1979 Elevator Assy. (Plain)<br>5483 Elevator Assy. (Rolled Damasc. Chrome)<br>5718 Elevator Assy. (Hand Damasc. Chrome) |
| 9.      | 5981 Safety Button<br>6297 Safety Detent Plate (NOT SHOWN)  | 38.     | 5430 Bolt Slide   |
| 10.     | 1561 Safety Click Ball  | 39.     | 1533 Cartridge Stop   |
| 11.     | 1562 Safety Click Spring  | 40.     | 1588 Cartridge Interopptor Assy.  |
| 12.     | 3311 Safety Lock  | 41.     | 1363 Mainspring   |
| * 13.   | 3948 Receiver Assy. (500C)<br>3963 Receiver Assy. (500CR)<br>5717 Receiver Assy. (500CPR)<br>4619 Receiver Assy. (500CT, CTV)   | 42.     | 1556 Mainspring Plunger   |
| 14.     | SEE BARREL PAGE   | 43.     | 1855 Trigger Housing  |
| 15.     | 2322 Front Sight<br>2750 Red Front Sight (APR)<br>2751 Red Center Sight (APR)   | * 43a.  | 1968 Trig. Hous. Assy.<br>5720 Trigger Housing (500CPR)   |
| 16.     | 3857 Take Down Screw Assy.<br>5747 Take Down Screw Assy. (500CPR)   | * -     | 5721 Trigger Hous. Assy (500 CPR)   |
| 17.     | 5393 Retaining Ring   | 44.     | 2246 Trigger Pin  |
| 18.     | 1846 Magazine Tube Assy.<br>5745 Magazine Tube Assy (500CPR)  | 45.     | 2244 Action Lock Pin  |
| 19.     | 1553 Magazine Spring  | 46.     | 2244 Sear Pin   |
| 20.     | 1850 Magazine Follower  | 47.     | 1845 Hammer Pin   |
| 21.     | 1826 Action Slide Assy.<br>5746 Action Slide Assy (500CPR)  | 48.     | 1567 Mainspring Guide Pin   |
| 22.     | 1843 Forearm (500C)<br>2070 Forearm (500 CR)<br>5711 Forearm (500CPR)<br>4614 Forearm (500CT, CTV)  | 49.     | 3945 Hammer Assy.   |
| 23.     | 1997 Action Slide Tube Nut  | 50.     | 1965 Mainspring Guide   |
| 24.     | 1631 Magazine Wood Plug   | 51.     | 1564 Sear Spring  |
| 25.     | 5478 Ejector  | * 52.   | 1820 Sear   |
| 26.     | 1539 Ejector Screw  | * 53.   | 1819 Disconnecter   |
| 27.     | 1856 Trigger Housing Pin  | 54.     | 1824 Action Lock Lever  |
| * 28.   | 5341 Bolt Lock  | * 55.   | 1577 Trigger<br>3236 Gold Trigger (500 CPR)   |
| 29.     | 1834 Bolt Lock Pin  | 56.     | 1565 Trigger Spring   |
| 30.     |   | 57.     | 1909 Trig. Hous. Pin Ret. Spring  |
| 31.     | 1544 Retain Pin   | 58.     | 1557 Mainspring Ret. Pin  |
| 32.     | 1842 L. H. Extractor  | 59.     | 1966 Action Lock Hammer Spring  |
|         |   | 60.     | 1996 Action Lock Disconnecter Spring  |
|         |   | 61.     | 647 Choke Sleeve  |
|         |   | * 62.   | 648 Choke Tube  |
|         |   | 63.     | 649 Index Plate   |
|         |   | 64.     | 2046 Front Sight (w/Rib)<br>2341 Front Sight (No Rib)   |
|         |   | 65.     | 1358 Grip Cap   |
|         |   | 66.     | 112 Grip Cap Screw  |
|         |   | 67.     | 1174 White G. Cap Spacer (NOT SHOWN)  |

Parts marked with an Asterisk (\*) are Restricted to Gunsmiths, Warranty Stations or the Factory for installation.

**MOSSBERG**  
MODEL 500

# 410 GAUGE



Pt. No.	Name
1.	170 Recoil Pad Screw
2.	3114 Recoil Pad (500E, 500ER, 500EPR) 3333 Butt Plate (500ET, ETV)
3.	967 White Spacer (500E, 500ER, 500EPR)

Pt. No.	Name	Pt. No.	Name
4.	1570 Stock Bolt	33.	2230 R. H. Extractor
5.	1571 Stock Washer	5152	R. H. Extractor (Chrome)
6.	2361 Stock Complete (500E) (NOT SHOWN)	34.	5485 R. H. Extractor Spring
	2680 Stock Complete (500ER) (NOT SHOWN)	* 35.	3172 Bolt (Plain)
	5726 Stock Complete (500EPR) (NOT SHOWN)		5157 Bolt (Roll Damasc. Chrome)
	2957 Stock Complete (500ET, ETV) (NOT SHOWN)		5686 Bolt (Hand Damasc. Chrome)
7.	1561 Safety Click Ball	36.	2303 Firing Pin
8.	1562 Safety Click Spring	37.	2356 Retaining Pin
9.	6105 Safety Button Screw	38.	2356 Retaining Pin
10.	5981 Safety Button	* 39.	2241 Bolt Lock
	6297 Safety Detent Plate (NOT SHOWN)	40.	2229 L. H. Extractor
11.	3312 Safety Lock	41.	2357 Bolt Lock Pin
* 12.	3924 Receiver Assy. (500E)	42.	2911 F. P. Retain. Pin
	3929 Receiver Assy. (500ER)	43.	2243 Trig. Housing Pin
	5730 Receiver Assy. (500EPR)	44.	2234 Trigger Housing
	5729 Receiver Assy. (500ET, ETV)	* 44a.	2360 Trigger Housing Assy.
13.	SEE BARREL PAGE		5733 Trigger Housing (500EPR)
* 14.	2322 Front Sight	* -	5734 Trigger Housing Assy. (500 EPR)
15.	3852 Take Down Screw Assy.	45.	2246 Trigger Pin
	5750 Take Down Screw Assy. (500EPR)	46.	2244 Action Lock Pin
	2750 Red Front Sight (APR)	47.	2244 Sear Pin
	2751 Red Center Sight (APR)	48.	2245 Hammer Pin
16.	2767 Click Spring	49.	1567 Mainspring Guide Pin
17.	1561 Click Ball	50.	3918 Hammer Assy.
18.	5560 Retaining Ring	51.	1965 Mainspring Guide
19.	2359 Magazine Tube Assy.	52.	1564 Sear Spring
	5748 Magazine Tube Assy. (500EPR)	* 53.	1820 Sear
20.	2309 Magazine Spring	* 54.	1819 Disconnect
21.	2248 Magazine Follower	55.	2225 Action Lock
22.	2353 Action Slide Assy.	* 56.	1577 Trigger (Blued)
	5749 Action Slide Assy. (500EPR)		3236 Gold Trigger
23.	2301 Forearm (500E)	57.	1565 Trigger Spring
	2691 Forearm (500ER)	58.	1909 Trig. Hous. Pin Ret. Spring
	5728 Forearm (500EPR)	59.	2369 Mainspring
	5187 Forearm (500ET, ETV)	60.	1556 Mainspring Plunger
24.	2227 Act. Slide Tube Nut	61.	1557 Mainspring Retaining Pin
25.	1631 Magazine Wood Plug	62.	1966 Action Lock Hammer Spring
26.	2355 Ejector Screw	63.	1996 Action Lock Disconnect Spring
27.	2668 Shell Guide	* 64.	741 Choke Tube
28.	2222 Ejector	65.	742 Choke Sleeve
29.	2362 Cartridge Inter. Assy.	66.	743 Index Plate
30.	2351 Cartridge Stop	67.	2341 Front Sight (No Rib)
31.	2239 Bolt Slide		2046 Front Sight (w/Rib)
32.	2363 Elevator Assy. (Plain)	68.	1358 Grip Cap
	5156 Elevator Assy. (Chrome)	69.	112 Grip Cap Screw
	5731 Elevator Assy. (Hand Damasc. Chrome)	70.	1174 White G. Cap Spacer (NOT SHOWN)

Parts marked with an Asterisk (\*) are restricted to Gunsmiths, Warranty Stations or the Factory for installation.

## EXTRA BARRELS AVAILABLE

NOTE: All barrels of the same gauge are interchangeable

### 12 GAUGE BARREL

- 30 INCH FULL CHOKE
- 30 INCH FULL CHOKE MAGNUM
- 30 INCH FULL CHOKE W/RIB
- 30 INCH FULL CHOKE MAGNUM W/RIB
- 30 INCH FULL CHOKE W/RIB PIGEON GRADE
- 30 INCH FULL CHOKE TRAP W/RIB PIGEON GRADE
- 28 INCH FULL CHOKE
- 28 INCH FULL CHOKE W/RIB
- 28 INCH MODIFIED CHOKE
- 28 INCH MODIFIED CHOKE W/RIB
- 28 INCH MODIFIED CHOKE W/RIB PIGEON GRADE
- 26 INCH IMPROVED CYLINDER
- 26 INCH SKEET W/RIB
- 26 INCH SKEET W/RIB PIGEON GRADE
- 26 INCH C-LECT-CHOKE
- 26 INCH C-LECT-CHOKE W/RIB
- 24 INCH SLUGSTER

### 16 GAUGE BARREL

- 28 INCH FULL CHOKE
- 28 INCH MODIFIED CHOKE
- 26 INCH IMPROVED CYLINDER
- 26 INCH C-LECT-CHOKE
- 24 INCH SLUGSTER

### 20 GAUGE BARREL

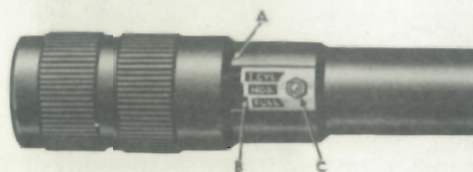
- 28 INCH FULL CHOKE
- 28 INCH FULL CHOKE W/RIB
- 28 INCH FULL CHOKE W/RIB PIGEON GRADE
- 28 INCH MODIFIED CHOKE
- 28 INCH MODIFIED CHOKE W/RIB
- 28 INCH MODIFIED CHOKE W/RIB PIGEON GRADE
- 26 INCH IMPROVED CYLINDER
- 26 INCH IMPROVED CYLINDER W/RIB
- 26 INCH SKEET W/RIB
- 26 INCH SKEET W/RIB PIGEON GRADE
- 26 INCH C-LECT-CHOKE
- 26 INCH C-LECT-CHOKE W/RIB
- 24 INCH SLUGSTER

### 410 GAUGE BARREL

- 26 INCH FULL CHOKE
- 26 INCH FULL CHOKE W/RIB
- 26 INCH FULL CHOKE W/RIB PIGEON GRADE
- 26 INCH MODIFIED CHOKE
- 26 INCH MODIFIED CHOKE W/RIB
- 26 INCH SKEET W/RIB
- 26 INCH SKEET W/RIB PIGEON GRADE
- 26 INCH IMPROVED CYLINDER
- 26 INCH IMPROVED CYLINDER
- 26 INCH C-LECT-CHOKE
- 26 INCH C-LECT-CHOKE W/RIB

## C-LECT CHOKE

The C-LECT-CHOKE adjustment is instant and positive. Heretofore, the average shooter had the selection of buying guns with four different degrees of choke; the FULL CHOKE, for long range shooting of 35 yards or over; the MODIFIED, for medium range shooting from 30 to 35 yards; the IMPROVED CYLINDER, for close range shooting of 20 to 30 yards; and the FULL CYLINDER, for very close range shooting up to 20 yards. The C-LECT-CHOKE gives you the choice of these four degrees of choke plus any in between adjustment that may be desired.



To set the C-LECT-CHOKE for FULL CHOKE (FULL) turn the adjusting sleeve until the rear edge of the sleeve "A" touches the front edge of the line just ahead of the word "FULL" on the index plate "B". For MODIFIED (MOD) or IMPROVED CYLINDER (I. CYL.) settings turn the sleeve "A" to the lines ahead of these words on the index plate. The sleeve may be set to any of these chokes or to any point in between to obtain any degree of choke desired. To adjust to FULL CYLINDER BORE, which is for extra close shooting, turn the adjusting sleeve one full turn beyond IMPROVED CYLINDER. NEVER SHOOT THE GUN WITH THE CHOKE TURNED ANY FURTHER THAN CYLINDER BORE AND NEVER SHOOT THE GUN WITHOUT THE ADJUSTING SLEEVE IN PLACE. NEVER ADJUST CHOKE WHEN GUN IS LOADED.

Rifled slugs and buckshot can be used in the C-LECT-CHOKE at any setting. For best results we recommend that it be set at CYLINDER BORE.

For cleaning and oiling, the adjustment sleeve can be removed by turning it all the way off the threads and pulling off.

### HOW TO MAKE YOUR OWN SETTINGS

If, for any reason, the index plate "B" is removed and you lose your setting, you will find underneath the index plate, a scratch mark which was put on at the factory. By turning the adjusting sleeve "A" up to this scratch mark, you automatically have a FULL CHOKE setting. You can then insert the index plate under the sleeve "A" until the FULL CHOKE line comes even to the edge of sleeve "A" and then put in and tighten sight "C".

	GAME	GUN SIZE	SHOT SIZE
Ducks		12, 16, 20	4, 5, 6
Geese, Brant		12 16, 20	BB, 2, 4, 6 2, 4
Turkey		12 16, 20	BB, 2 2, 4
Pheasants, Prairie Chicken, Sharptail Grouse, Sage Grouse		12, 16, 20	5, 6, 7½
Ruffed Grouse		12 16, 20, 410	6, 7½, 8 7½, 8
Bob White, Western Quail		12, 16, 20, 410	7½, 8
Dove, Pigeon		12, 16, 20, 410	7½, 8
Woodcock, Snipe, Rail		12, 16, 20, 410	7½, 8, 9
Crows, Hawks		12, 16, 20, 410	5, 6, 7½
Rabbits, Squirrel		12, 16, 20, 410	5, 6, 7½
Fox		12 16, 20	BB, 2 2, 4
Deer, Wolf		12, 16, 20, 410 12, 16, 20	Rifled slugs 0, 00 Buck Shot
Black Bear		12, 16	Rifled slugs



# 10 COMMANDMENTS OF SHOOTING SAFETY

1. **TREAT EVERY GUN WITH THE RESPECT DUE A LOADED GUN.**
2. **WATCH THAT MUZZLE!** Carry your gun safely: keep safety on until ready to shoot.
3. **UNLOAD GUNS WHEN NOT IN USE,** take down or have actions open; guns should be carried in cases to shooting area.
4. **BE SURE BARREL IS CLEAR OF OBSTRUCTIONS,** and that you have ammunition only of the proper for the gun you carry.
5. **BE SURE OF TARGET BEFORE YOU PULL TRIGGER;** know identifying features of game you hunt.
6. **NEVER POINT A GUN AT ANYTHING YOU DO NOT WANT TO SHOOT;** avoid all horseplay.
7. **NEVER CLIMB A TREE OR FENCE OR JUMP A DITCH WITH A LOADED GUN;** never pull a gun toward you by the muzzle.
8. **NEVER SHOOT A BULLET AT A FLAT, HARD SURFACE OR WATER;** at target practice be sure your backstop is adequate.
9. **STORE GUNS AND AMMUNITION SEPARATELY,** beyond reach of children.
10. **AVOID ALCOHOLIC BEVERAGES** before or during shooting.



DO YOUR PART:  
KEEP SHOOTING  
A SAFE SPORT



## JOIN

THE NATIONAL RIFLE ASSOCIATION  
1600 RHODE ISLAND AVENUE, N.W.  
WASHINGTON, D. C. 20036