

**WITH 5-YEAR
WARRANTY**

Owner's Manual

Marlin[®]

MODEL 25MN 22 MAGNUM RIFLE BOLT ACTION 22 WMRF only

IMPORTANT

This manual contains operating, care and maintenance instructions. To assure safe operation, any user of this firearm must read this manual carefully. Failure to follow the instructions and warnings in this manual can cause accidents resulting in injury or death. This manual should always accompany this firearm, and be transferred with it upon change of ownership.

The warranty card attached to the cover must be filled out and mailed within 10 days of purchase.

WARNING: KEEP THIS FIREARM OUT OF THE REACH OF CHILDREN, UNAUTHORIZED INDIVIDUALS, AND OTHERS UNFAMILIAR WITH THE SAFE HANDLING OF FIREARMS.

LIMITED WARRANTY

4/8/02

The Marlin Firearms Company
**FIVE YEAR LIMITED WARRANTY AGAINST
DEFECTS IN MATERIAL & WORKMANSHIP**

This firearm warranty is good only to the ORIGINAL OWNER who has registered his ownership with The Marlin Firearms Company at 100 Kenna Drive, North Haven, Connecticut.

WARRANTY and CERTIFICATE OF OWNERSHIP card **must** be completed and mailed to The Marlin Firearms Company at the above address WITHIN TEN (10) DAYS of purchase to insure the protection of the warranty. NOTICE of defect in materials and/or workmanship **must** be received by the company WITHIN FIVE (5) YEARS from the date of purchase.

Normal wear, or damage resulting from neglect, abuse, alteration, or repairs not made or authorized by The Marlin Firearms Company or use of non-Marlin parts are not covered by the warranty.

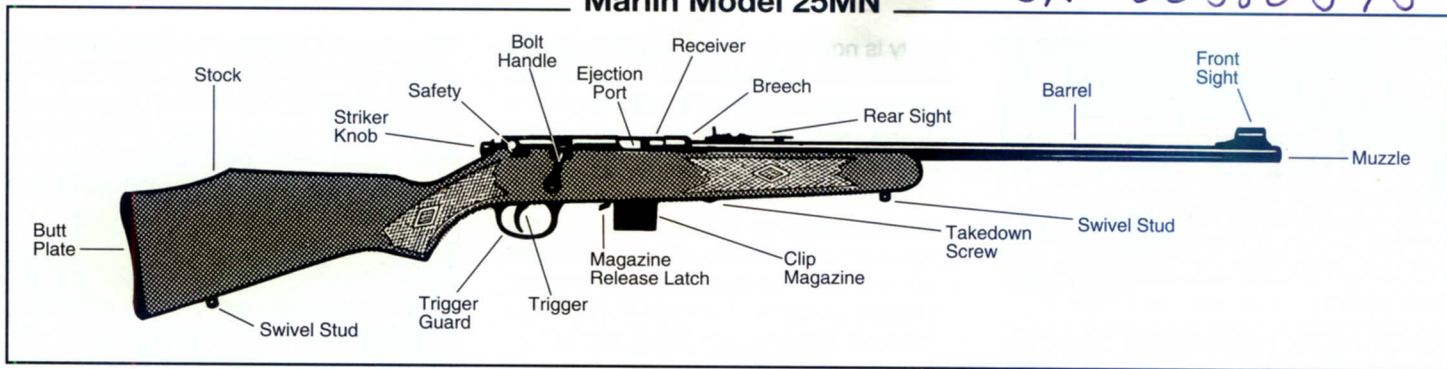
THIS WARRANTY GIVES YOU SPECIFIC LEGAL RIGHTS, AND YOU MAY ALSO HAVE OTHER RIGHTS WHICH VARY FROM STATE TO STATE.

MARLIN'S PERFORMANCE UNDER THE ABOVE WARRANTY

1. After notice of defect in material and/or workmanship is received by The Marlin Firearms Company, Marlin shall send instructions for shipment of the firearm; and repairs will be made and the firearm returned within a reasonable time after the firearm is received. Cost of shipping, insurance charges, etc. involved in returning the firearm to the company shall be prepaid by the original owner.
2. Cost of parts and labor performed shall be provided without charge by The Marlin Firearms Company.
3. If The Marlin Firearms Company, after receipt of the firearm, determines that the defects in material and/or workmanship were the result of abuse and/or neglect, or otherwise not covered by the warranty set forth above, Marlin shall notify such owner to that effect and give an estimate for repair. In such cases, repair, return shipping and insurance charges, etc. shall be paid by such owner.
4. In the event that The Marlin Firearms Company is unable to make warranty repairs to the firearm, it shall, within a reasonable time after its receipt, notify the owner to that effect and give him the option either to receive a replacement of the same model, if then available in its inventory, or to receive a refund, either of which, if feasible, will be made through the store of purchase.

The Marlin Firearms Company

100 Kenna Drive, North Haven, CT 06473-0905



Before You Use This Firearm

It is very important that you read and understand this manual before using your new rifle. Warnings should be read and heeded carefully. Also follow the safety rules listed in "Marlin's Guide to Gun Safety", printed in this manual.

•**WARNING:** We specifically disclaim responsibility for any damage or injury occurring with a Marlin firearm in which faulty, non-standard, "remanufactured", or handloaded (reloaded) ammunition is used.

•**WARNING:** Your rifle was shipped completely assembled and should not be used or disassembled without fully reading and understanding the instructions in this manual.

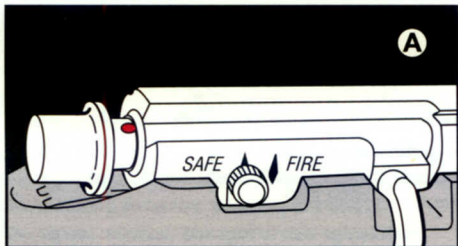
How Your Rifle is Made

Your rifle has been made to Marlin's strictest standards of safety and reliability. It has been proof tested with a high pressure load, function fired, and sighted-in at the factory. Built with tradition and engineered to last, your rifle is the product of over 100 years of Marlin technology.

How to Operate the Safety

- WARNING:** Prior to firing, know and understand the operation of the safety by practicing with the rifle unloaded.
- WARNING:** Never put the safety between the SAFE and FIRE notches. Always place it in either the forward notch (FIRE) or rearward notch (SAFE). Unless the safety is positioned in one of the two notches, you cannot be certain whether it is on SAFE or FIRE.

The safety is a round button located on the right side of the receiver behind the bolt handle. The words "FIRE" and



Safe Position

“SAFE” are engraved on either side of the safety button. To put your rifle on SAFE, first cock it, by opening and closing the bolt (a red dot on top of the striker knob will be visible). Then pull the safety button back to the rear notch (SAFE). The safety is now on SAFE (see A). To move your safety to the FIRE position, push the safety button to the forward notch (FIRE). The



Fire (Off Safe) Position

safety is now in the FIRE position (see B). If the trigger is pulled with the safety button in this position, the rifle will fire.

- WARNING:** Never disassemble the safety. It has been correctly designed, fitted and tested. Any mechanical device can fail, however, so never rely on the safety to justify careless handling. Never use a firearm with a safety that does not function properly. (See instructions for factory maintenance in this manual.)

How to Load Your Rifle

Magazine Loading

- WARNING:** Never attempt to load your rifle with ammunition that does not meet the cartridge designation stamped on the barrel. Use only clean, dry, factory-loaded 22 Win. Magnum Rim Fire ammunition which conforms to industry standards. Do NOT use 22 Short, Long or Long Rifle cartridges.
- WARNING:** Before loading this firearm, always check the bore and chamber to be sure they are free of grease, oil or any other obstruction. Be sure the chamber is empty, bolt is open and the safety is on SAFE. Avoid having your hands near the muzzle of a loaded rifle.

Open the bolt by lifting the bolt handle and pulling it all the way back. Then, with the safety on SAFE, remove the clip magazine by pressing release button shown in (C). Insert up to seven cartridges in the magazine (see D). Replace loaded magazine being sure it locks in place.

Loading A Single Cartridge

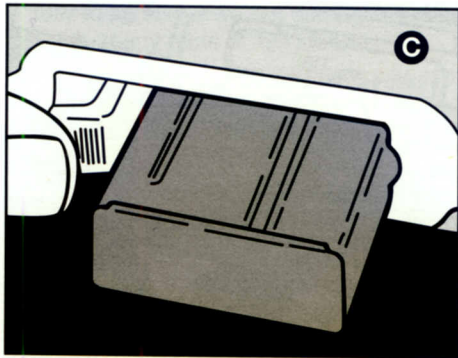
Your rifle may be loaded with a single cartridge, provided the magazine is empty. Open the bolt and put the safety on SAFE. Place the cartridge, bullet end toward the muzzle, directly into the chamber.

Cocked and Ready

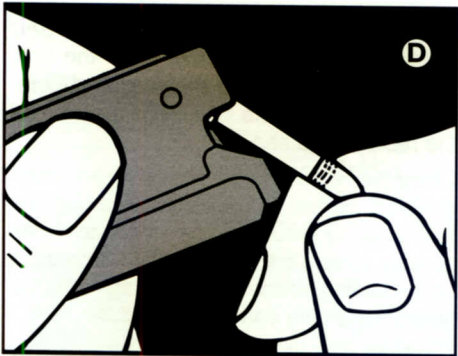
Close the bolt to chamber a cartridge. A red dot on top of the striker knob will signify that *the gun is cocked and ready to fire.*

To Fire

With the gun pointed at the target, move the safety to the FIRE position and squeeze the trigger. Open and close the bolt completely for each repeat shot. If you have not fired all cartridges at the target, be sure to put the safety on SAFE until you are ready to shoot again.



Releasing the clip magazine



Loading the clip magazine

How to Unload

With the safety on SAFE, and the rifle pointed in a safe direction, open the bolt and eject the loaded cartridge from the chamber.

With the bolt still open, remove the clip magazine, and do not reinsert it until you are ready to shoot again.

•**WARNING:** Completely open and fully close the bolt several more times to be certain that the chamber and feed mechanism are empty. Finally, inspect interior of receiver visually. Leave the bolt in the open position.

What to do if Rifle Fails to Fire

1. Misfires:

If you squeeze the trigger and the cartridge does not fire, remain in the shooting position and count to 10. Then operate the bolt to eject the misfired cartridge from the gun.

2. Underpowered Shot:

An underpowered cartridge is unusual if the ammunition is fresh, clean, and factory loaded. However, if you hear an unusual sound or low report, you should stop immediately and proceed as follows:

•**WARNING:** Because the bullet may actually still be in the barrel, you must unload completely and then, with the bolt removed, look through the barrel from the breech end to see if there is any obstruction. If there is, it should be removed by a qualified gunsmith.

Sighting

Your rifle was pre-sighted at the factory. However, due to individual sighting characteristics, minor adjustments may be necessary.

Always ensure the rifle is pointed in a safe direction. Put the rifle on SAFE and open the bolt before making any sight changes.

Sight Adjustment Rule

To make corrections, always remember to move the rear sight in the direction in which you wish to move the center of the group. That is, if you are shooting low, raise the rear sight. If you are shooting to the right, move the rear sight to the left.

Windage (Horizontal) Adjustment

To move the point of impact to the left or right, loosen the leaf binding screw until you can move the leaf manually. Move

the leaf in the appropriate direction, retighten the screw and fire again. Continue this process until your shots are horizontally zeroed-in.

Elevation Adjustment

To raise the rear sight (if you are shooting low) turn the elevation adjustment screw to the right. To lower the rear sight (if you are shooting high) turn the elevation adjustment screw to the left. Continue adjusting and firing until your shots are vertically zeroed-in.



Scope Mounting

Your rifle has a grooved receiver designed to handle tip-off-type 22 scope bases. They are made by Tasco (Part #797C) and Weaver (Part #49440), and others, and are available through your local gun dealer. You may also order directly from Marlin Gun Service. Call 1-800-544-8892 for more information.



Removing the bolt

How to Clean Your Rifle

- **WARNING:** Before cleaning your rifle, be certain it is completely unloaded, and the bolt has been removed.
- **WARNING:** Never attempt to wipe down or clean a loaded firearm. Follow instructions under "How to Unload" before cleaning.

With normal use it is not necessary to clean the bore of your rifle. However, if the rifle gets wet or if foreign material gets into the action or barrel, cleaning as described below is recommended.

Being sure your rifle is unloaded and pointed in a safe direction, open the bolt, pull the trigger fully to the rear and completely withdraw the bolt from the rear of the receiver, as shown in (E).

Clean the bore and barrel by using any standard .22 caliber commercial cleaning rod and cleaning patches. Clean the barrel with powder solvent and wipe lightly with gun oil after cleaning. Always clean the rifle from the breech (chamber end) to the muzzle.

Caution: Before using any solvent or other gun cleaning product, read the label care-

fully to be sure it will not damage either the finish or any parts of this firearm.

•**WARNING:** Further disassembly of the action is not recommended and should only be attempted by a qualified gunsmith.

NOTE: The safest possible way to store this, or any other Marlin bolt action rifle, is with the bolt removed and kept separately, under lock and key.

To replace the bolt assembly, align the tab on the left forward portion of the bolt (see F), with the corresponding groove in the rear of receiver. With trigger pulled, insert bolt into rear of receiver. Never force the breech bolt into the receiver, as

serious damage may result. If you encounter difficulty, remove the bolt and re-check alignment.

Use a very thin coat of light oil during below freezing conditions. Condensation droplets will form soon after the firearm is brought into a warm room, or it may become wet during inclement weather. In any case, all moisture should be removed. Exterior metal finishes may be wiped down with a slightly oiled cloth. For long term storage, lightly oil the bore, barrel and action with gun oil. Remove the bolt (see E) and store it separately. Your firearm should be completely unloaded

and stored in a dry area. Never store your firearm in a carrying case.

Repair Instructions

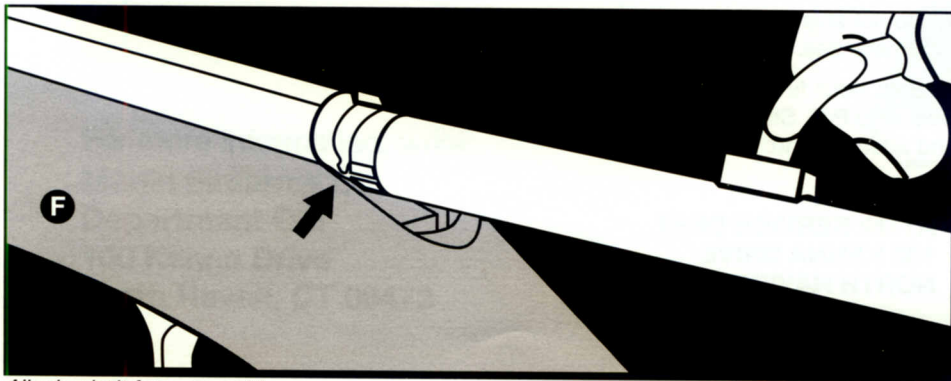
Your firearm has been designed, engineered and manufactured in accordance with Marlin's rigid quality control standards. However, any mechanical device may occasionally require adjustment or repair.

Questions regarding the performance and serviceability of your firearm should be addressed to Marlin Gun Service. You should include the Serial Number, Model Number and a full description of the conditions and problems involved.

Warranty Repairs

Our Warranty policy covers all our firearms against defects in workmanship or material for a period of five years from the date of purchase to the original owner. See the inside front cover of this manual for warranty details.

Guns requiring warranty repairs should be returned to the factory. Be sure to follow the "Shipping and Handling" instructions in this manual.



Aligning bolt for reassembly

Non-Warranty Repairs

Your local gunsmith may be able to repair your gun. If not, ship it to the factory, following the "Shipping and Handling" instructions in this manual.

After receiving your firearm, we will send you an estimate of the repair cost. Repairs will begin upon receipt of your check or money order. If repairs are not possible, your gun will be returned.

Shipping and Handling

When sending your firearm to the factory please follow these instructions:

1. Prior to mailing, be absolutely certain that the firearm is completely unloaded (See "How to Unload" in this manual).
2. Pack your gun carefully. Use ample cushioning material and a sturdy outer cardboard box. Do not ship in a special container which you want returned.

3. Accessories such as scopes, scope mounts, gun case, quick detach type swivels, sling straps, etc. should be removed prior to returning the firearm.

4. Inside the box, include the following information: model number, serial number, description of damage or problem, and under what conditions problem occurs.

5. *Keep a record of your serial number when returning a firearm.*

6. Clearly mark your return address on the outside of the box and on your instruction sheet.

7. Do not ship live ammunition under any circumstances.

8. Ship your firearm via insured Parcel Post or U.P.S. Shipment must be prepaid and addressed to:

**MFC INC.
ATTN: SERVICE DEPT.
100 KENNA DRIVE
NORTH HAVEN, CONN. 06473**

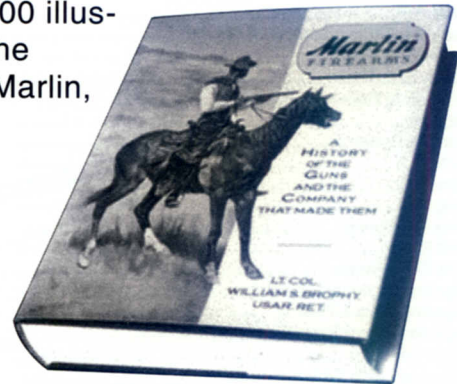
IMPORTANT

If you have any questions or problems relating to your new Marlin, would like additional information on safe operation, or wish to order parts or accessories, just call our Customer Service Center. A Service Representative can be reached at the number listed below, between 8 A.M. and 4:30 P.M. (Eastern Time), Monday through Friday.

1-800-544-8892
(Toll Free)

The Fascinating History of Marlin

Written by the late William S. Brophy, Marlin's Senior Technical Manager and Official Company Historian for many years, this prodigious book details the history of the Marlin Firearms Co. and its products. The hardbound volume contains more than 600 pages and over 1000 illustrations. Must reading for anyone interested in all the models — pistols, rifles and shotguns — made by Marlin, and in the story of more than a century of firearms production in America.



For more information, write:

Marlin Firearms Co.
Department OM
100 Kenna Drive
North Haven, CT 06473

MODEL 25MN PARTS LIST

For parts prices, call 1-800-544-8892 (8 A.M. to 4:30 P.M., Eastern Time, Weekdays)
Be sure to mention gun serial number when ordering parts

III. No.	Part Name	Part No.	III. No.	Part Name	Part No.
**1	Barrel.....	105520	*23	Safety Assembly	520281
2	Barrel Retaining Pin	430397	*24	Sear.....	220151
*	Breech Bolt (Complete) (Not Shown).....	505686	25	Trigger and Safety Pivot Screw (2)	320898
*3	Breech Bolt, Front	105186	26	Sear Spring	420395
*4	Breech Bolt, Rear	520486	27	Stock	505637
5	Breech Bolt Retaining Pin	430597	28	Striker	520153
***6	Buttplate	320402	29	Striker Cam Pin	320799
7	Buttplate Screw (2).....	330790	30	Striker Knob	220355
8	Ejector	305068	31	Striker Retaining Screw.....	320790
9	Extractor	305547	32	Striker Sleeve	320856
*10	Firing Pin	220599	33	Striker Spring	420594
11	Firing Pin Spring.....	420994	34	Striker Cam Bushing	320253
12	Front Sight.....	330144	35	Striker Assembly Pin	330197
13	Front Sight Screw.....	320593		Striker Assembly (Not Shown)	
14	Magazine Complete, 7 Shot.....	405146		Consisting of Above 8 Parts	520654
15	Magazine Guard Plate	305247	36	Swivel Stud (2)	420793
16	Magazine Guard Plate Screw (2)	310790	37	Takedown Screw, Front	305390
17	Magazine Latch	305048	38	Takedown Screw, Rear	305091
18	Magazine Latch Screw	320592	39	Takedown Screw Stud	205059
19	Magazine Mounting Bracket.....	305049	*40	Trigger	220443
20	Magazine Mounting Bracket Screw.....	305092	41	Trigger Guard	204158
21	Rear Sight Assembly.....	530742	42	Trigger Guard Screw	320390
**22	Receiver	505560	43	Trigger Spring	410695
			**44	Trigger Stud	320558

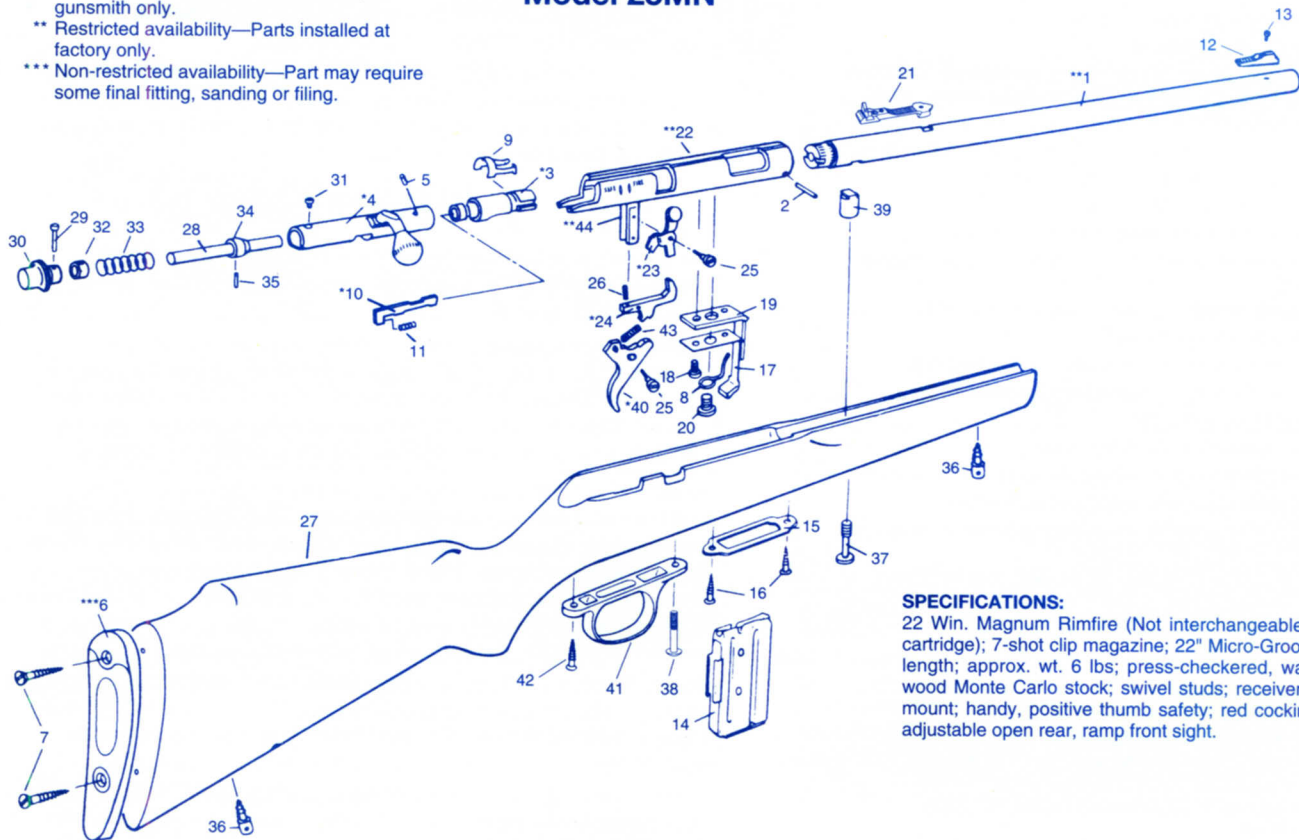
Specifications subject to change without notice.

Model 25MN

* Restricted availability—Part sent to qualified gunsmith only.

** Restricted availability—Parts installed at factory only.

*** Non-restricted availability—Part may require some final fitting, sanding or filing.



SPECIFICATIONS:

22 Win. Magnum Rimfire (Not interchangeable with any other 22 cartridge); 7-shot clip magazine; 22" Micro-Groove® barrel; 41" o.a. length; approx. wt. 6 lbs; press-checked, walnut finished hardwood Monte Carlo stock; swivel studs; receiver grooved for scope mount; handy, positive thumb safety; red cocking indicator; screw-adjustable open rear, ramp front sight.

Marlin's Guide to Gun Safety

1. Handle every gun as you would a cocked and loaded gun.
2. Keep the safety on SAFE until you are ready to shoot.
3. Be sure of your target before you shoot.
4. Before target shooting, be sure you have an adequate backstop. Remember, all rifle ammunition is dangerous at ranges up to, and in excess of a mile.
5. Control the muzzle, and never point a gun at anything you don't want to shoot.
6. Always wear protective glasses when shooting, disassembling or cleaning firearms.
7. Wear hearing protectors when target shooting.
8. Do not use modified, damaged or dirty ammunition.
9. Use only ammunition of the correct caliber, size and bullet shape.
10. Cartridges that have been improperly handloaded can damage the gun and cause personal injury.
11. Avoid ricochets by never shooting at water, or any hard, flat surface.
12. Be sure no one is in path of ejecting shells.
13. Never climb or jump over a fence or other obstacle with a loaded gun.
14. Never climb into or out of a tree, or tree stand with a loaded firearm.
15. Never pull a gun toward you by the muzzle.
16. Avoid alcoholic beverages before and during shooting.
17. Never use a gun that fails to function properly. Do not try to force a jammed action.
18. Be sure to keep the barrel and mechanism free of obstructions.
19. Before cleaning, be sure the chamber, action and magazine are completely unloaded.
20. Always unload a gun before storing, transporting, or leaving unattended.
21. Never enter a motor vehicle with a loaded gun.
22. Store guns and ammunition separately, locked and beyond the reach of children.
23. Always carry your firearm empty with the action open, except when you intend to shoot.
24. Avoid bumping, dropping or jarring any firearm. Bumping, dropping or jarring has resulted in certain firearms discharging accidentally under some circumstances.
25. Consult owner's manual before using any firearm.
26. Never interchange parts between firearms, except where indicated as a safe practice.

Failure to follow these rules, or other instructions in this manual, can result in personal injury.

WARNING

Children are attracted to and can operate firearms that can cause severe injuries or death.

Prevent child access by always keeping guns locked away and unloaded when not in use. If you keep a loaded firearm where a child obtains and improperly uses it, you may be fined or sent to prison.

ADVERTENCIA

A los niños los atraen las armas de fuego y las pueden hacer funcionar. Ellos pueden causarse lesiones graves y la muerte.

Evite que los niños tengan acceso a las armas de fuego guardándolas siempre con llave y descargadas cuando no las esté utilizando. Si usted tiene un arma de fuego cargada en un lugar en que un niño tiene acceso a ella y la usa indebidamente, le pueden dar una multa o enviarlo a la cárcel.

Health Warning: Discharging of firearms in poorly ventilated areas and handling ammunition may cause exposure to lead and/or lead compounds. Exposure may cause cancer, birth defects or damage to the kidney, nervous, blood forming and reproductive systems. Have adequate ventilation at all times, especially in confined areas. Wash hands thoroughly after shooting, handling ammunition, or cleaning a firearm. Do not eat or smoke during these activities.

Safety Warning: Marlin strongly recommends that you take a hunter safety course, taught by a certified instructor, before you use this firearm. Your State Fish & Game Dept. or a local gun shop can suggest courses in your area.

Safety Warning: Keep this firearm out of the reach of children, unauthorized individuals, and others unfamiliar with the safe handling of firearms.