

# CLASSIC SIDE-BY-SIDE RIFLE

INSTRUCTION MANUAL

**KRIEGHOFF**



## CLASSIC Side-by-Side Rifle

### Instruction Manual

---

In creating the Krieghoff CLASSIC side-by-side, we have sought to build a rifle with all of the advantages of a great traditional design. The CLASSIC is produced using the best materials and the most innovative firearms technology, and it incorporates several patented features which make it the safest most reliable double rifle available today, and at a reasonable price.

We are proud of the CLASSIC and hope that it will be your double rifle of choice whenever a double is called for.

Please read the following instructions and descriptions carefully to familiarize yourself with the CLASSIC and its many features. Knowledge and familiarity are the bases of safe gun handling, and safe gun handling is the first and foremost element in the enjoyment of fine firearms.

Good Shooting  
Good Hunting



Dieter Krieghoff



Peter Braß

## CAUTION !!

---

You must read and understand all instructions before using this or any firearm.

Read, learn, and follow the safety procedures described on pages 5 through 7.

Always point a firearm in a safe direction – NEVER toward another person or yourself.

Always be sure of your background before firing. Rifle bullets may carry as far as three miles and can be deadly at that range.

NEVER discharge a rifle towards any hard surface or water because bullets can ricochet in unpredictable directions with deadly force.

Remember that all firearms are not alike. You must familiarize yourself thoroughly with each and every firearm that you use. Learn how to use it.

Learn how to use it safely.

**NEVER POINT ANY FIREARM  
TOWARD ANOTHER PERSON OR  
YOURSELF!!**

## CONTENTS

---

<b>I. General Gun Safety</b> .....	5 - 6
<b>II. Specific Safety Features of the Krieghoff CLASSIC Side-By-Side Rifle</b> .....	7
<b>III. General Description of CLASSIC Features</b> .....	8 - 10
1. Standard Features	
2. Optional Features	
<b>IV. Instructions for use - KRIEGHOFF CLASSIC</b>	
1. Assembly and Disassembly .....	11 - 13
2. The Manual Cocking Device .....	14 - 15
3. Hair Trigger .....	16 - 17
<b>V. Maintenance</b> .....	18 - 20
<b>VI. Scope Mounts (Option)</b> .....	21
<b>VII. Sighting-In and Grouping</b> .....	22 - 23

## I. GENERAL GUN SAFETY

---

### Firearm Safety is YOUR Responsibility !!

#### Read and observe the following:

- A loaded firearm can injure and kill. When handled properly and according to basic safety rules, however, it is safe.
- Accident prevention is the responsibility of anyone handling a firearm.

#### THINK GUN SAFETY!!

- Always handle any firearm as if it is loaded.

#### EVERY GUN IS A LOADED GUN.

- Never point any firearm at yourself or anyone else. Always point your firearm in a safe direction and be sure of your background. Remember, bullets can range as far as three miles and can cause serious injury or death at that range.
- Load your gun only when you are ready to use it. When hunting, always keep your safety on or your hammers uncocked except when shooting.
- Firearm safeties are an important additional safety feature, but like any mechanical device they are subject to wear and can malfunction. No firearm safety is absolutely reliable. Always handle every firearm as if it is loaded and ready to fire.
- Control your shooting. Always be aware of the range of the ammunition you shoot. Rifle bullets may cause grave injury or death as far as three miles. Make sure that you do not endanger anybody when shooting in a certain direction. Never shoot at a flat or hard surface or water, as bullets may ricochet in unpredictable directions.
- Never hold the firearm at the muzzle. Never rest the muzzle on your foot.
- Before handling and loading any firearm, be sure you know how it func-

## I. GENERAL GUN SAFETY

---

tions. Read the instruction manual. If the instruction manual for your Krieghoff firearm is missing, contact Krieghoff International Inc.

PO Box 549

Ottsville PA 18942, USA,

or

H. Krieghoff GmbH

PO Box 2610

D-89016 Ulm, Germany.

- Use factory loaded ammunition only. Factory loaded ammunition provides quality control and consistency essential to the safe use of a firearm. Use only the proper caliber ammunition designated for your firearm. Never use damaged ammunition.

- Keep your firearm clean. Prevent dirt and objects from entering the mechanism and barrel. Before loading any firearm, inspect the barrel to insure it is clean and free of any obstruction. Shooting with any obstruction in the barrel – dirt, mud, snow, grease, wads, lodged bullet or jacket – can cause barrel bulging and/or rupture and result in grave injury or death.
- Never handle or use a firearm after consuming alcohol or any drugs that may alter alertness, consciousness, judgement, or coordination.
- Store firearms and ammunition separately in a safe, dry, ventilated and

locked place, beyond the reach of children. Store all firearms unloaded. Be absolutely certain that the chamber is empty.

- Protect firearms from corrosion, which could effect proper and safe functioning. Firearms should be kept thoroughly cleaned and all metal surfaces should be protected by a light film of non-gumming gun oil, such as Krieghoff's GP, especially during storage. Keep firearm unwrapped during storage and provide good ventilation.
- Remember that no gun can shoot anything that it is not pointed at!!

## II. SPECIFIC SAFETY FEATURES OF THE KRIEGHOFF CLASSIC RIFLE

---

The Krieghoff CLASSIC does not have a mechanical safety. Instead it is equipped with Krieghoff's patented Kickspanner Manual Cocking Device. Slide the Kickspanner forward until it engages and the rifle is cocked and ready to fire. Press it forward slightly from the cocked position to release it and allow it to slide backwards, and the rifle is uncocked. This is of course the ultimate 'on safe' position because the hammers are not cocked and cannot fall accidentally because of bumping, jarring, wear, or mechanical failure. Your CLASSIC rifle is always in either the cocked or uncocked position – always ready to fire or unable to fire, resembling in a very real sense an early rifle

with exposed hammers. There is no question about whether it is cocked and no question about whether it is 'on safe.' And you can carry it fully loaded but uncocked, ready for fast action but without fear of accidental discharge.

### NOTE:

Cocking device in forward position toward the barrel: The Krieghoff CLASSIC rifle is cocked and ready to fire.

Cocking device in rear position toward the stock: The Krieghoff CLASSIC rifle is uncocked and cannot be fired.

- Remember that when you fire only one shot, the second hammer remains

cocked. If it is not necessary to reload and fire quickly, simply operate the Kickspanner, instead of the conventional safety, to uncock the second barrel.

- Your Krieghoff CLASSIC also has the Combi-Cocking-Device. When the Kickspanner is left in the forward – cocked – position, the CLASSIC functions like any self-cocking double rifle. Open it. Reload and close it. And the CLASSIC is cocked and ready to fire. (Note that this feature may not be on European model CLASSICS made prior to 1999. Be familiar with the features of the specific CLASSIC that you are using.)

### III. GENERAL DESCRIPTION OF THE KRIEGHOFF CLASSIC FEATURES

#### 1. Standard Features

---

- The Kickspanner  
The Krieghoff CLASSIC's patented Kickspanner cocking device allows you to cock the rifle manually just before you need to fire it. You have the ultimate safety of a manual cocking device and the great advantage of the CLASSIC double rifle – two shots as quickly as possible whenever necessary. Furthermore, you can carry the Krieghoff CLASSIC fully loaded and uncocked so that it is ready for immediate action but absolutely unable to discharge accidentally.
- The Combi-Cocking Device  
This additional feature of the Kickspanner enables the CLASSIC to function like any self-cocking rifle. As long as the Kickspanner is left in the forward position, the CLASSIC is re-cocked when it is opened and immediately ready to fire when it is re-loaded and closed.
- The Universal Trigger System  
Krieghoff developed and patented a trigger system that many consider the finest available in any modern combination gun. It effectively prevents doubling in even the largest caliber rifle, while providing at the same time crisp 3 1/2 to 4 pound (1.5kg) trigger pulls reminiscent of your best sidelock.
- Adjustable Muzzle Wedge  
**Be absolutely certain that the fire-arm is unloaded before touching the adjustable muzzle wedge.**  
We highly recommend that any adjustments concerning re-regulating are being done by a skilled gunsmith or by the Krieghoff factory. This recommendation includes CLASSIC rifles that feature an adjustable muzzle wedge. Generally speaking, the top screw on the front part of the front sight ramp holds the muzzle wedge in place and should not be touched. The seated hexscrew just below and located between the barrels changes the sideways regulation. Turning the seated hexscrew clockwise will bring the



### III. GENERAL DESCRIPTION OF THE KRIEGHOFF CLASSIC FEATURES

#### 1. Standard Features

---

two rifle barrels closer together. Turning it counterclockwise will spread the barrels further.

Note: Only CLASSICS in long range calibers up to and including .375 H&H or .375 Flanged Magnum have the adjustable muzzle wedge. The large bore CLASSICS have a non-removable barrel wedge firmly soldered between the barrels for added rigidity.

- Forged steel receiver with reinforced sidewalls for extra strength.
- Hammer Safety to prevent the CLASSIC from firing unless it is closed.
- Sliding, self-adjusting wedge to keep the CLASSIC securely bolted.
- Broad, massive, underlugs to withstand wear.
- Solid express rib designed specifically for scope mount installation, eliminating soldering and re-bluing.
- Durable nickel-plated action and triggers to resist wear and corrosion.
- Cold hammered barrels made of highest quality barrel steel.
- Hand checkered, oil finished European walnut stocks.

- Shock absorbing stock bolt assembly which keeps the stock from becoming loose and makes it quickly detachable for easier care and maintenance.
- Optional custom and left-handed stocks.

### III. GENERAL DESCRIPTION OF THE KRIEGHOFF CLASSIC FEATURES

#### 2. Optional Features of the CLASSIC Rifle

---

- Single Trigger  
(Not available for CLASSIC "Big Five".)  
The CLASSIC is available with an optional single mechanical trigger, which functions independently of recoil. Even if the first barrel cartridge is a misfire, the second barrel shot can be made quickly and reliably.
- CLASSIC-S configuration with sideplates.
- 21.5" (55cm) extra short barrels for quick handling.  
(Available in certain calibers only.)
- Wood upgrade.
- Custom stock dimensions and left-handed stocks.
- Optional engraving patterns and custom engraving to your specifications.
- Spring-loaded extractor claws for rimless cartridges.
- Additional custom features are available upon request.
- Krieghoff Express Sight Package with one standing and two folding rear blades and folding front moon sight.
- BreakKO recoil reducer installed in the buttstock. (Recommended for big five calibers.)

## IV. INSTRUCTIONS FOR USE - KRIEGHOFF CLASSIC

### 1. Assembly and Disassembly

---

#### CAUTION

- **You MUST be absolutely certain that any firearm is unloaded before attempting to assemble or disassemble it.**
- Always use snap caps when dry-firing the CLASSIC.
- To prevent damage to the automatic hammer safety, never pull the trigger of the CLASSIC when the top lever is in the open position.

#### Assembly

Lubricate the barrels and action as described on page 18.

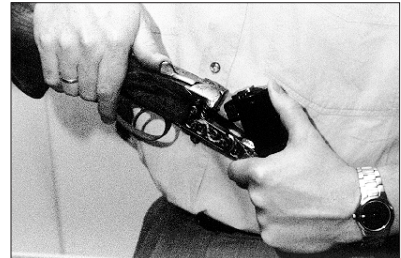
Make sure the extractors are raised. The hammers must be uncocked.

Grasp the barrels in the left hand, just ahead of the monoblock, as shown in the illustration. Holding the stock and receiver by the pistol grip with the right hand, open the top lever and introduce the barrels into the action at about a forty-five (45) degree angle.

Open the top lever. Apply gentle pressure with the ball of the left hand to direct the barrels onto the pivots (see

illustration #1) and, with a rocking motion, seat the barrel cut-outs firmly onto the pivots.

Push the top lever all the way to the right and close the gun. (Note that new unfired rifles have very close tolerances and may be more difficult to assemble until broken in.)



1

## IV. INSTRUCTIONS FOR USE – KRIEGHOFF CLASSIC

### 1. Assembly and Disassembly

---



2

#### Attachment of the forearm

Make sure the hammers are uncocked. Holding the assembled receiver and barrels in one hand, take the forearm in the other and position the rear, rounded surface against the rounded front of the action (see illustration #2) at about a thirty (30) degree angle.



3

Fit the forearm firmly against the action and pivot it towards the barrel until it latches into position. Make sure that the forend latch engages fully with the barrel lug. If necessary, push the forend catch lever manually into its fully seated, closed position (see illustration #3).

## IV. INSTRUCTIONS FOR USE – KRIEGHOFF CLASSIC

### 1. Assembly and Disassembly

---

#### Disassembly

Make sure the hammers are uncocked. To disassemble the CLASSIC, pull the forend latch out fully, rotating the forend away from the barrels and removing it from the rifle.

Move the top lever all the way to the right and rotate the barrels around the hinge pin, as you would to open the rifle. Gently work the barrels free of the action.

Be sure to release the top lever to its closed position after removing the barrel. To do so, push the top lever all the way to the right. Hold it there and push down the top lever release, which is located inside the action, at the rear, near the breech face. Hold the release down and allow the top lever return to its closed position.

## IV. Instructions for use – Krieghoff CLASSIC

### 2. The Manual Cocking Device

---

**Please review the general and specific safety rules on pages 5 to 7.**

The Krieghoff CLASSIC does not have a conventional safety. It is equipped instead with the patented Kickspanner manual cocking device, which is located on the top tang in the position usually occupied by a conventional safety.

If the Kickspanner is in the forward position, the CLASSIC is cocked and ready to fire.

If the Kickspanner is in the rearward position, the CLASSIC is uncocked and unable to fire – the ultimate safe position.

**Cocking device in forward position towards barrels:**

**The CLASSIC is cocked and ready to fire.**

**Cocking device in rear position, towards the stock and shooter:**

**The CLASSIC is uncocked and cannot be fired.**

## IV. Instructions for use – Krieghoff CLASSIC

### 2. The Manual Cocking Device

#### Cocking of the hammers

(illustration #4)

Push the cocking device all the way forward toward the barrels until it engages.

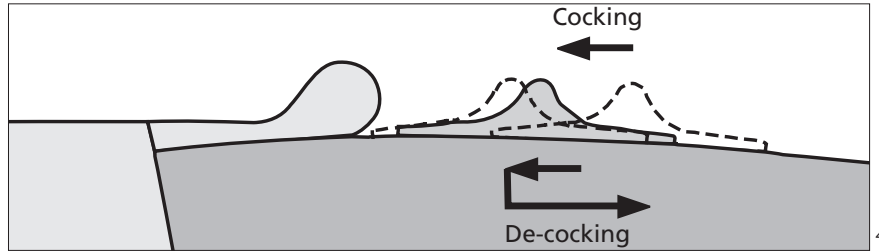
#### Uncocking of the hammers

(illustration #4)

Push the cocking device all the way forward until it releases. Then slide it back into its rearward, uncocked position.

Note that the Kickspanner is spring-loaded. To avoid damage to the mechanism and injury to the hand, do not allow the cocking device to snap back into the rearward position.

Support it with your thumb during the entire length of its rearward travel.



## IV. Instructions for use – Krieghoff CLASSIC

### 3. Hair Trigger

---

WARNING! KRIEGHOFF CLASSIC RIFLES DESIGNED FOR THE EUROPEAN MARKET ARE FREQUENTLY EQUIPPED WITH A HAIR TRIGGER FEATURE, SOMETIMES ALSO REFERRED TO AS SET TRIGGERS. YOU MUST BE CERTAIN THAT YOU ARE TOTALLY FAMILIAR WITH THE FIREARM THAT YOU ARE USING AND UNDERSTAND FULLY HOW TO HANDLE AND SHOOT IT SAFELY! HAIR OR SET TRIGGERS ARE DESIGNED TO FIRE AT THE SLIGHTEST TOUCH. BEFORE LOADING ANY FIREARM YOU SHOULD BE FAMILIAR WITH ITS TRIGGER SYSTEM TO AVOID ACCIDENTAL DISCHARGE.

CLASSIC “Big Five” Rifles do not have the hair or set triggers, but feature Krieghoff’s Universal Trigger System described on page 8. Should your CLASSIC have the hair trigger feature, please read carefully on.

**Warning:**  
**Use the hair trigger only under controlled circumstances when you have benchrested the gun and when you are ready to shoot. The slightest touch at the trigger will let the gun go off!**

**Setting the Hair Trigger** (illus. #5):  
Push the trigger forward towards the muzzle until it engages.



**Disengaging of the Hair Trigger** (illus. #6):  
Point the gun in a safe direction and immediately uncock the hammers using the cocking device before you disengage the hair trigger.



## IV. Instructions for use – Krieghoff CLASSIC

### 3. Hair Trigger



6

After you made sure that the gun is uncocked, put your thumb behind the trigger and keep slight pressure against the trigger. Then lay your index finger of the same hand against the front of the trigger, but still maintain at the same time slight thumb pressure from behind. Now move the trigger slightly in the pull direction until it disengages from the

hair trigger setting holding the trigger firmly between the two fingers the whole time.

#### **Adjustment of the Hair Trigger weight and travel (illus. #7)**

The hair trigger weight and travel can be adjusted with the trigger screw. Always make sure that the gun is unloaded and uncocked, and the set trigger is disengaged when adjusting it.

**Lowering the hair trigger weight and automatically shortening the travel: Turn the trigger screw clockwise.**  
**Increasing the hair trigger weight and automatically increasing the travel: Turn the trigger screw counterclockwise.**

We highly recommend that only a skilled gunsmith does any adjustments to the factory settings of the hair trigger.



7

**Important:**  
**When using the hair trigger you must pull the trigger straight back. Pulling sideways will cause the trigger to stick and will prevent the gun from firing.**

## V. MAINTENANCE

---

### 1. Stock and Forearm

The stock and forearm of the Krieghoff CLASSIC have a traditional European oil finish. Although carefully treated with special walnut oil, they are not fully waterproof and require periodic maintenance, especially after exposure to wet weather.

Allow the wood to dry out at room temperature. Remove any accumulated dirt with a soft cloth or bristle brush. Apply several very small drops of walnut oil to one side of the stock. Spread it over the entire surface and rub it into the wood with your bare hand, allowing the friction to warm the wood and the oil to be

fully absorbed. Repeat the process on the other side of the stock and on the forend.

Periodic treatment of the wood with oil will eventually close all the wood pores, making the stock and forearm more water resistant and adding a lustrous patina to the wood.

Do not use excessive amounts of oil and do not oil the wood more than several times a year unless it has been exposed to wet weather. Excessive oiling can soften the wood and weaken the butt stock.

### 2. Internal Mechanism

Periodically remove the butt stock and clean the internal mechanism of the CLASSIC. Using a soft brush or compressed air, remove any moisture and any particles of powder, lead, brass, or rust. Spray the action out and leave a light coat of a non-gumming, acid free, best quality gun oil with a wide operational temperature range. We recommend Krieghoff Gun Pro (GP). Gun Pro cleans, lubricates and protects against corrosion.

## V. MAINTENANCE

---

### **Note:**

Use only top quality maintenance products that are designed specifically for firearms. Other products may contain ingredients or have chemical properties which can actually impair the proper functioning of your firearm.

### **3. Barrels**

To clean and lubricate your barrels, use only solvents and oil that are formulated specifically for firearms maintenance. Krieghoff Gun Pro is highly recommended.

Check the barrels continually during shooting for powder and bullet residues. Clean the barrels after each use and

after each fifty rounds that is fired through them. Clean and lubricate them only with suitable solvents, bore cleaners, and oils according to the manufacturers' recommendations. Do not use steel bore brushes.

### **Important**

- Always clean the barrels from the breech end to avoid damages to the muzzle.
- Always store cleaned and oiled barrels with the muzzle pointing downward to prevent excess oil from flowing into the receiver. The oil can gum the internal mechanism and can soften

and weaken the stock where it joins the receiver.

- Before loading the gun, always check that the barrels are free of any obstructions. The bores and chambers must be dry and free of oil and grease before you fire the gun. Rifle accuracy and consistent groups can only be achieved when the bores are dry, and free of oil and grease which is also particularly important for the chambers. Oil and grease residues in the bore and importantly also in the chamber will definitely have an adverse affect on rifle accuracy as tests by independent laboratories, for example DEVA, conclusively proved.

## V. MAINTENANCE

---

### 4. Barrel Pivot Recesses and Underlugs

Barrel pivot recesses and underlugs must be kept free of dirt and debris and must always be lightly lubricated to prevent wear. Use only a best quality gun grease which provides superior protection and will not gum up.

We recommend Krieghoff Gun Glide.



## VI. SCOPE MOUNTS (OPTION)

---

The addition of a good scope extends the range and maximizes the accuracy of any rifle. The advantages of a good rifle, however, can be lost completely if it is paired with an inferior or poorly mounted scope. So give careful consideration to your choice of scope and mounts to get the most out of your CLASSIC.

Krieghoff offers factory installation of scopes using claw mounts or pivot mounts with either bridges or with rings around the objectives.

All of these mounts are rugged and reliable and allow the scope to be mounted low over the receiver for fast, accurate shooting. They are all quick-detachable as well and will keep the scope zeroed even after extensive use.

## VII. SIGHTING IN AND GROUPING

---

### Guaranteed accuracy

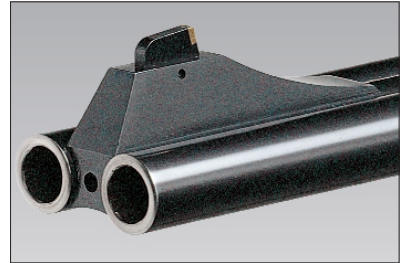
The accuracy of any rifle barrel depends on both the quality of its manufacture and the quality of the ammunition used in it. The barrels of the Krieghoff CLASSIC are cold hammered from the best barrel steel available and are regulated with the expertise that only one hundred years of experience in building fine guns can provide.

As with all side-by-side rifles, however, the problem of accuracy is compounded in the CLASSIC by the configuration of its barrels.

The heat generated by firing the first barrel of a double rifle results in sufficient expansion and torque to affect the accuracy of the second barrel. And since the essential quality of a double is its ability to deliver two shots into potentially dangerous game as quickly, reliably, and accurately as possible, the fine gunmaker has the complex task of regulating the barrels so that they will shoot together at a prescribed yardage with specific ammunition.

Even after factory regulation, however, the accuracy of a double rifle can be affected by the choice of a new ammunition, a change in the rifle's dynamics by adding any weight, such as a scope,

or the need to have the barrels shoot together at a different distance.



9

## VII. SIGHTING IN AND GROUPING

---

Krieghoff has solved this dual problem of barrel regulation with a dual approach in the CLASSIC rifle – the expert use of traditional regulating techniques during manufacture and the introduction of the most innovative feature of the CLASSIC, the adjustable barrel wedge, which is available in .375 H&H or Flanged Magnum and smaller.

The accuracy of your CLASSIC rifle is quite simply guaranteed.

Shooting each barrel cold for each shot, we guarantee that the maximum grouping will be within twenty percent of the ammunition manufacturer's specifications.

With premium ammunition, this translates into a maximum grouping of less than 2" (4cm) for a three shot group at 110 yards (100m), shooting each barrel cold for each shot. Note that these are the maximum groups and that in most cases the groups are significantly better.

When the CLASSIC in calibers up to and including .375 H&H is shot as it may be in the field – right barrel and left barrel in rapid 5 - 10 sec. succession – it is guaranteed to produce a 3 shot maximum group of three inches (8cm) at 110 yards (100m) for both barrels.

For CLASSIC "Big Fives" we guarantee the same maximum grouping under the

parameters outlined above but at a distance of fifty-five yards (50m).

Note: These are maximum guaranteed groups. In most instances the actual results are noticeably better.

## DATA SHEET FOR CLASSIC SIDE-BY-SIDE RIFLE

---

Serial Number.....

Caliber .....

Barrel Length .....

Grade/Engraving .....

Ammunition .....

Accessories .....

.....



## NOTES

---

## NOTES

---

## NOTES

---



H. Krieghoff GmbH  
Jagd- und Sportwaffenfabrik  
Boschstrasse 22  
D-89079 Ulm / Germany  
P.O. Box 2610  
D-89016 Ulm / Germany  
Phone +49 7 31 / 4 01 82-0  
Fax +49 7 31 / 4 01 82-70  
[www.krieghoff.de](http://www.krieghoff.de)

A Tradition of Performance®

Krieghoff International Inc.  
P.O. Box 549  
7528 Easton Road  
Ottsville, PA 18942 USA  
Phone 610 - 847-5173  
Fax 610 - 847-8691  
[www.krieghoff.com](http://www.krieghoff.com)  
"A Tradition of Performance" is a registered trademark of Krieghoff Int., Inc.