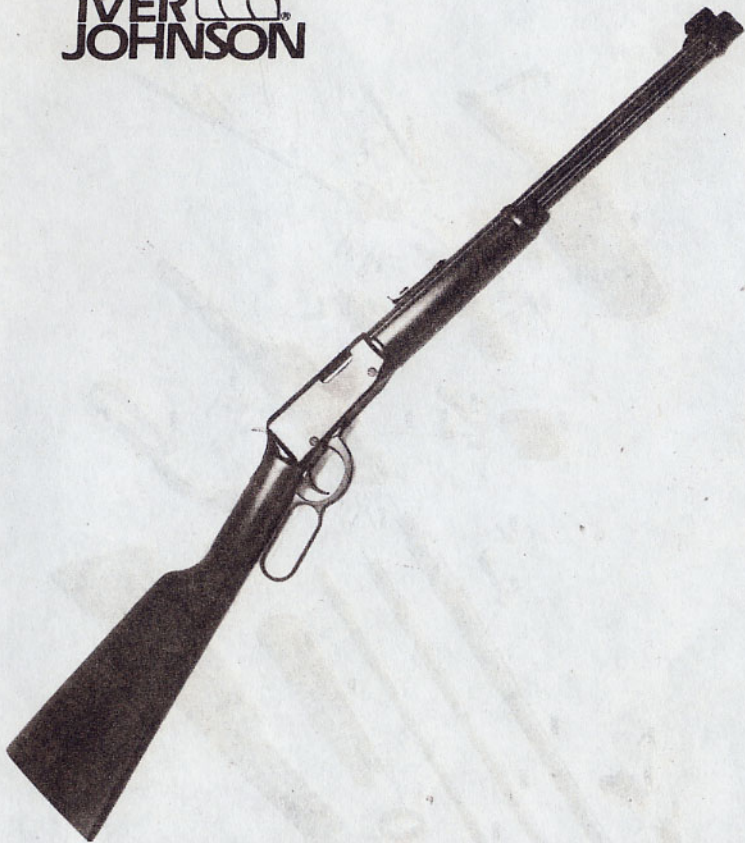


**IVER
JOHNSON**

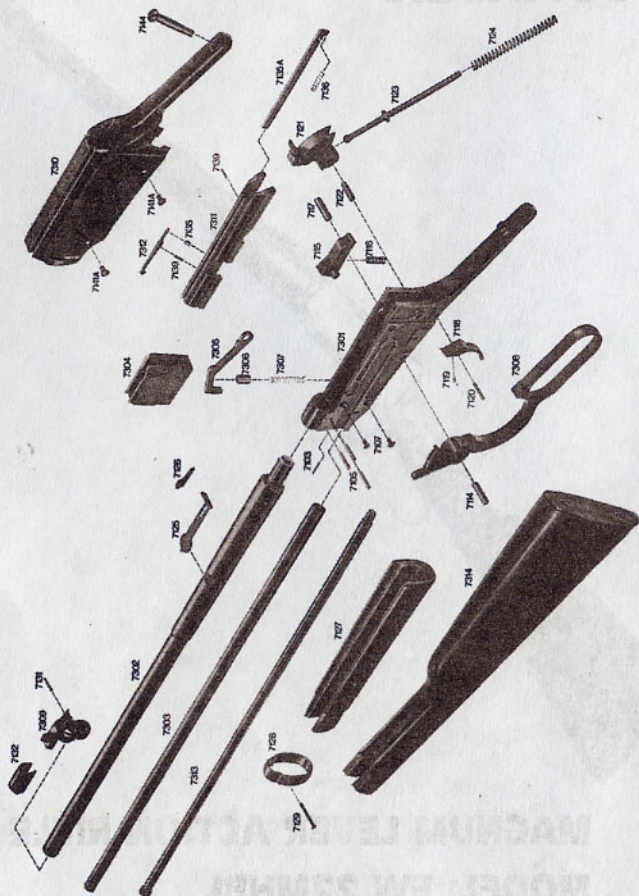


MAGNUM LEVER ACTION RIFLE

MODEL: EW.22MHL

Caliber: Cal. .22 Winchester Magnum Firearm

Please specify on order parts number and name.



| Cat. No. | Spare Parts | Cat. No. | Spare Parts |
|----------|-----------------------|----------|---------------------|
| 7301 | Frame | 7123 | Main spring guide |
| 7302 | Barrel | 7124 | Main spring |
| 7103 | Cylindrical pin | 7125 | Rear sight |
| 7303 | Magazine tube outside | 7126 | Rear sight elevator |
| 7105 | Tapered pin | 7127 | Forearm |
| 7304 | Carrier | 7128 | Rear band |
| 7107 | Set screw | 7129 | Rear band screw |
| 7305 | Carrier lever | 7309 | Front sight |
| 7306 | Tube | 7131 | Conical pin |
| 7307 | Carrier spring | 7132 | Front sight cover |
| 7308 | Finger lever | 7311 | Breech bolt |
| 7114 | Finger lever pin | 7135A | Firing pin |
| 7115 | Locking bar | 7136 | Firing pin spring |
| 7116 | Locking bar spring | 7312 | Extractor |
| 7117 | Locking bar pin | 7138 | Extractor spring |
| 7118 | Trigger | 7139 | Cylindrical pin |
| 7119 | Trigger spring | 7310 | Receiver |
| 7120 | Cylindrical pin | 7141A | Setscrew with disk |
| 7121 | Hammer | 7313 | Magazine |
| 7122 | Hammer pin | 7314 | Butt stock complete |
| | | 7144 | Upper tang screw |

1. GENERAL DIRECTIONS. The EW.22MBL is a lever action rifle that is loaded and repeated by lowering the finger level (7308) all the way downward and then returning it to the original position. When shooting the finger level must be in the upright position in order to fire.

2. OPERATION INSTRUCTIONS FOR EW.22MHL. After checking to see that the chamber is empty unlock magazine (7313) and pull it out of tube until the loading slot is open. Fill the magazine with not more than 12 cartridges, then lock it again. Push the loading lever (7308) all the way forward and then back again (repeating mechanism), the rifle is now ready to fire. After firing, the empty cartridge case will be ejected automatically by means of the repeating mechanism. At the same time, a new cartridge will be transported into the chamber.

3. FOR SAFE CARRYING With the rifle pointed in a safe direction hold hammer (7121) to the rear securely with your thumb and pull trigger (7118). As soon as the hammer can be moved forward, remove

finger from trigger and release hammer as far as it will go. The rifle is on safe. Trigger must be immovable. It is recommended to practice this procedure several times with the unloaded rifle.

4. DISASSEMBLING PROCEDURE. After checking to see that the rifle is unloaded and the chamber is empty loosen screws (7141A and 7144), remove receiver (7310) by lifting it, pull breech bolt out of receiver. For re-assembling, follow this procedure in the reverse way. When assembling the receiver, move loading lever (7313) slightly in order to let the lever-stud slip into the catch ring of the breech bolt (7311).

Safety Precautions:

Always carry the firearm with the safety on. Make sure that after finishing shooting, the firearm is empty and that no cartridge is left in the barrel, carrier or magazine. Never point the weapon at anything you don't intend to shoot. ANY FIREARM IS DANGEROUS IF NOT CAREFULLY AND SAFELY HANDLED.

Technical data:

1. Grooved receiver for telescope mounts
2. Adjustable rear sight
3. Every weapon factory test-fired

| | |
|--------------------|---------------------------------------|
| Caliber: | .22 Winchester Magnum Rimfire only |
| Overall length: | 35.8" |
| Barrel length: | 18.5" |
| Weight: | 5.5 lbs. |
| Magazine capacity: | 12 shot |



2202 REDMOND ROAD
JACKSONVILLE, AR 72076
(501) 982-9491