

USAS-12
SEMI AUTO SHOTGUN

(12 GAUGE, 2³/₄ LENGTH)

OPERATOR'S MANUAL



DAEWOO
DAEWOO PRECISION INDUSTRIES LTD.

USAS-12 SEMI AUTO SHOTGUN

(12 GAUGE, 2 $\frac{3}{4}$ LENGTH)

OPERATOR'S MANUAL



CONTENTS

■ FOREWORD	1
■ BASICS OF SAFETY RULES	1
■ INTRODUCTION	2
■ SPECIFICATIONS	3
A. Shotgun	
B. Ammunition	
■ CHARACTERISTICS	4
■ HANDLING	5
A. Loading	
B. Unloading	
C. Immediate action	
D. Sight adjustment	
E. Caution	
■ TROUBLE SHOOTING	8
■ DISASSEMBLE THE SHOTGUN	9
■ CONVERSION TO AMBIDEXTROUS FUNCTION	15
■ REASSEMBLE	15
■ CLEANING AND MAINTENANCE	16
■ ILLUSTRATED PARTS LIST	17
A. Barrel and handguard group	
B. Bolt and bolt carrier group	
C. Receiver group	
D. Trigger housing group	
E. Butt stock and butt plate group	
■ BASIC ISSUE ITEM LIST(BIIL)	27

■ FOREWORD

This manual is made for information and guidance of personnel whose duties involve the use and maintenance of the 12 gauge USAS-12 SHOTGUN and to enable him to use it with maximum efficiency.

■ BASICS OF SAFETY RULES

- Before handling and loading this gun, be sure you read this manual and know how it functions.
- Do not use a poor quality shotshell as it may cause a malfunction. This shotgun was developed using WINCHESTER 00 BUCK SHOT and its use is recommended.
- Never point a gun at anything you don't want to shoot.
- Avoid alcoholic beverages before or during shooting.
- Be sure your gun is clean - before loading inspect the barrel to insure it is perfectly clean and free of foreign objects. Shooting with an obstruction in the barrel such as dirt, mud, grease, lodged shell or jacket, etc. can cause barrel bulging and/or rupture.
- Store guns and ammunition separately, beyond the reach of children. Be sure the chamber is empty.

■ INTRODUCTION

The USAS-12 SHOTGUN is an aircooled, gas-operated, magazine fed, SELECTIVE FIRE SHOTGUN, capable of ambidextrous function, using standard 12 guage shotgun ammunition.



(Fig. 1)

■ SPECIFICATIONS

A. Shotgun

1) Calibre	18.5×70 mm (12 gauge×2¾ inches)
2) Weight	12 lbs. Empty (5.5 Kg)
3) Length	
—Overall	38 inches (965 mm)
—Barrel	18.1 inches (460 mm)
4) Chamber	12 gauge×3 inches
5) Rate of fire	
—Practical	60—75 RPM

B. Ammunition

1) Calibre	18.5×70 mm (12 gauge×2¾ inches 3 inches MAG. SINGLE)
2) Type	Buck shot RIFLED SLUG

—Warning :

This shotgun was developed using WINCHESTER 00 BUCK SHOT and its use is recommended. Do not use a poor quality shotshell as it may cause a malfunction.

■ CHARACTERISTICS

- Quickly converts to right or left hand operation.
- The aluminum alloy receiver is solid, durable and guarantees longer lifetime.
- Bolt and bolt carrier group, recoil spring and buttstock group, barrel group and trigger housing group easy to disassemble without any special tool.
- Bolt hold-open system in charging handle.
- Locked breech gas operated with self cleaning system.
- Selector lever with 2 positions.
SAFE : Safety
SEMI : Fire
- Rear sight and Front sight are adjustable as M16's.
- Ambidextrous ejection to the right or left.
- Possibility to mount a telescopic sight or M16 compatible sight system.
- Long recoil action to reduce felt recoil and muzzle climb.
- 10 round magazine
- 20 round drum magazine.

■ HANDLING

A. Loading

1) Magazine

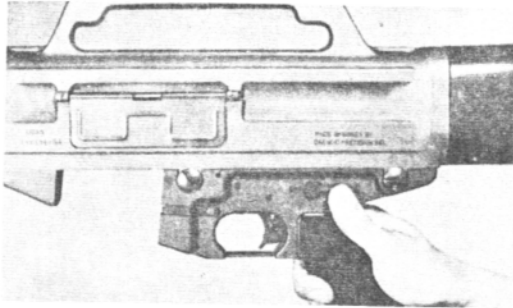
Insert shells one by one into the magazine.

The rim of upper shell should not pass over that of lower shell as it may cause a feeding problem.

2) Gun

Place selector lever on safe :

(It cannot be placed on safe unless the gun is cocked). (Fig. 2)



(Fig. 2)

Grasp the pistol grip, point the muzzle in a safe direction, and insert loaded magazine into magazine well.(Fig. 3)



(Fig. 3)

Push upward until the magazine catch engages and holds the magazine.

If the magazine catch does not work well, lubricate it lightly.

Pull the charging handle fully to rear and release it. The gun is now loaded and can be fired when the selector lever is placed in the fire position.

B. Unloading the gun

- Place the selector lever on 'safe'
- Remove the magazine by pressing the magazine catch.(Fig. 4)



(Fig. 4)

- Pull the charging handle fully back to extract and to eject the shell in the chamber.
- Release the charging handle.

C. Immediate action

Immediate action is the action taken to correct the stoppage without analyzing the cause.

Immediate action to clear a stoppage in the shotgun is as follows.

- 1) Tap upward on the bottom of the magazine to insure that it is fully seated. Pull charging handle fully to the rear.
Watch for ejection of complete shotshell or a empty shell.
- 2) Release charging handle forward to assure bolt carrier closure. Attempt to fire the gun. If gun fails to fire, inspect to determine cause of malfunction and take appropriate action. (See trouble shooting)
- 3) If a shotshell or empty shell is not ejected, check for a shell in the chamber. If chamber is clear, release charging handle to feed a shotshell and attempt to fire. If the gun still fails to fire, inspect to determine cause of malfunction and take appropriate action. (See trouble shooting)
- 4) If a shotshell or empty shell is noted in chamber, it must be removed before attempting to reload or recycle the gun. A stuck shell can be removed by inserting a rod into the bore from the muzzle and tapping the shell.

D. Sight adjustment

- 1) Rear sight is adjustable for windage.
- 2) Front sight is adjustable for elevation by pushing plunger with a pin and turning the sight.

E. Caution

Do not allow gun to rest on open "ejection port cover."
The port cover may be bent and its latch will not work.

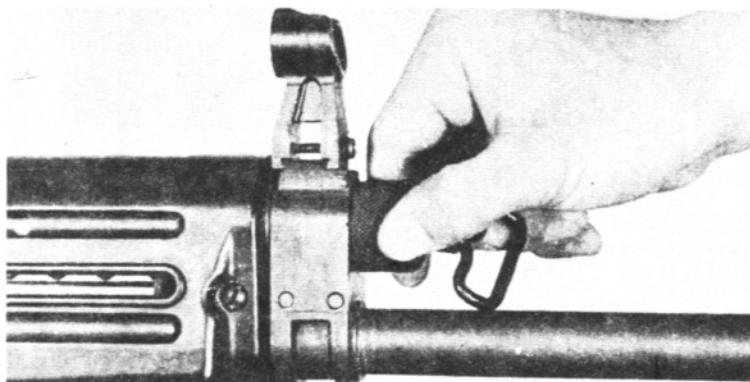
■ TROUBLE SHOOTING

Malfunctions are usually the result of worn parts or improper care of the shotgun. A knowledge of the shotguns function enables the user to classify and correct the malfunction.

PROBLEM	CHECK FOR	HOW TO FIX IT
WON'T FIRE	Selector lever on SAFE	Put it on FIRE
	Broken or bent firing pin	Replace
	Defective ammo	Remove and discard
WON'T EXTRACT	Broken grip edge of extractor	Replace
	Dirty chamber	Clean
	Broken plunger extractor	Replace
WON'T FEED	Magazine not fully seated	Tap the bottom of magazine
	Ammo jammed in chamber	Remove jammed ammo
	Too much dirt built up in gas tower and on gas piston	Disassemble and remove dirt from gas tower and gas piston
WON'T EJECT	Dirty ejector	Remove dirt from ejector and lubricate
	Dirt built up in gas tower and gas piston	Remove dirt from gas tower and gas piston

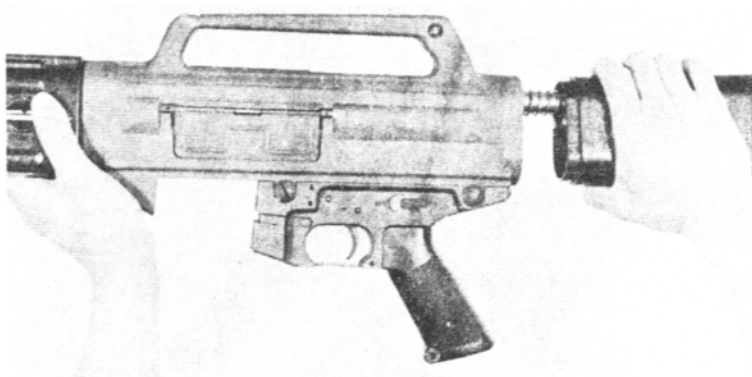
■ DISASSEMBLE THE GUN

- 1) Remove magazine and pull charging handle to rear. Check to make sure chamber is empty.
- 2) Remove knurled nut(CAP) from guide rod at front of gas tower.(Fig. 5)



(Fig. 5)

- 3) Pull butt stock and guide rod/recoil spring assembly from receiver.(Fig. 6)



(Fig. 6)

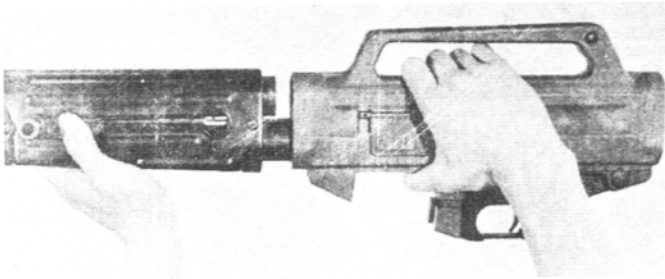
- 4) Elevate muzzle and pull charging handle to rear to remove bolt carrier group from receiver.(Fig. 7)



(Fig. 7)

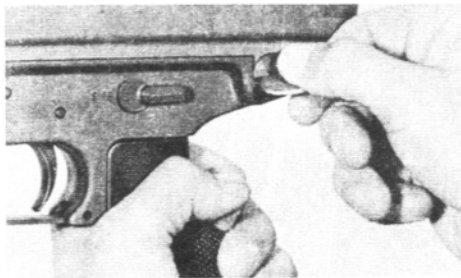
- 5) Pull barrel group forward and remove it from receiver.(Fig. 8)

NOTE : DO NOT REMOVE BARREL BEFORE REMOVING BOLT CARRIER.



(Fig. 8)

- 6) Loosen screws and nuts retaining receiver and trigger housing with coin or others. Remove them from trigger housing.(Fig. 9)



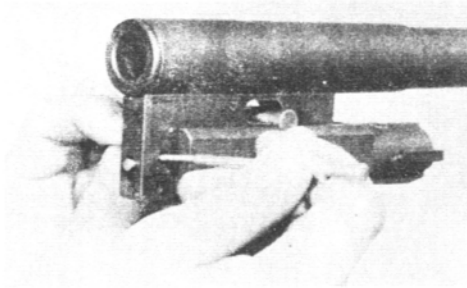
(Fig. 9)

- 7) Pull trigger housing group down to separate it from receiver.(Fig. 10)



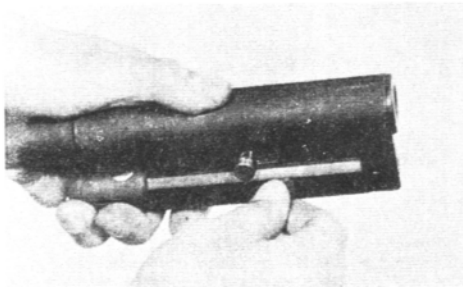
(Fig.10)

- 8) Push out firing pin retainer and remove firing pin and spring from bolt carrier.(Fig. 11)



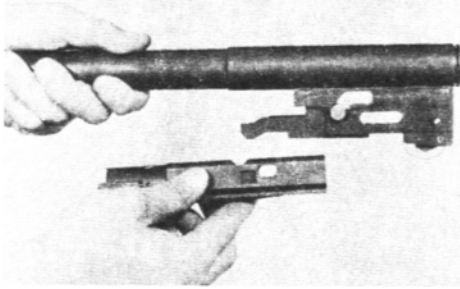
(Fig. 11)

- 9) Remove stroke BAR from bolt and bolt carrier.(Fig. 12)



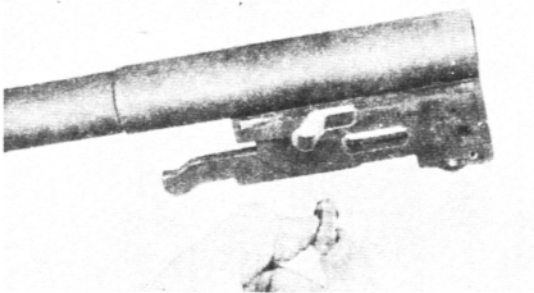
(Fig. 12)

10) Slide bolt forward and remove it from bolt carrier.(Fig. 13)



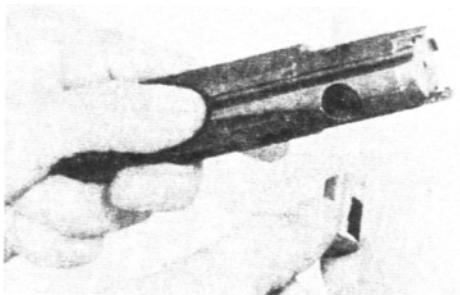
(Fig. 13)

11) Remove roller from bolt and bolt carrier assembly.(Fig. 14)



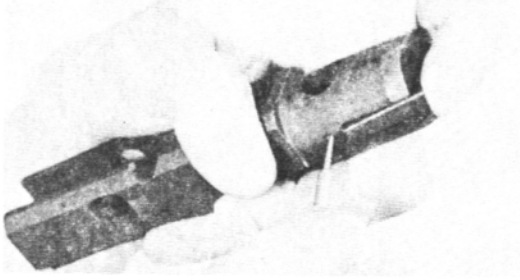
(Fig. 14)

12) Remove lock from bolt.(Fig. 15)



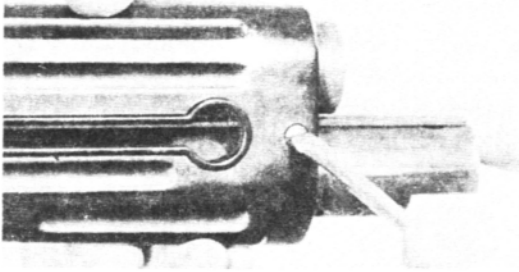
(Fig. 15)

13) Depress extractor plungers and remove extractors.(Fig. 16)



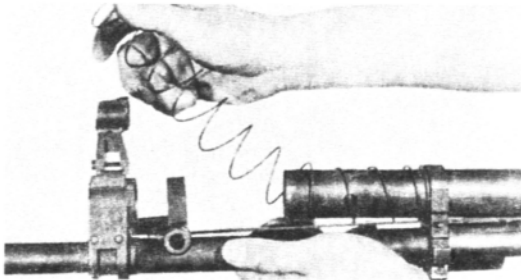
(Fig. 16)

14) To disassemble barrel group, use screwdriver or coin to remove handguard screws. Handguards are removed by lifting over charging handle at disassembly hole.(Fig. 17)



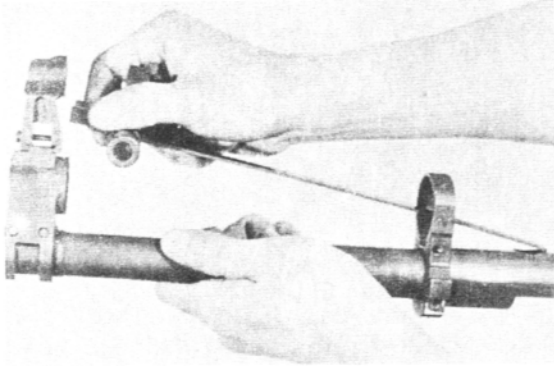
(Fig. 17)

15) Pull gas tube cylinder to rear and remove tube and spring from barrel assembly.(Fig. 18)



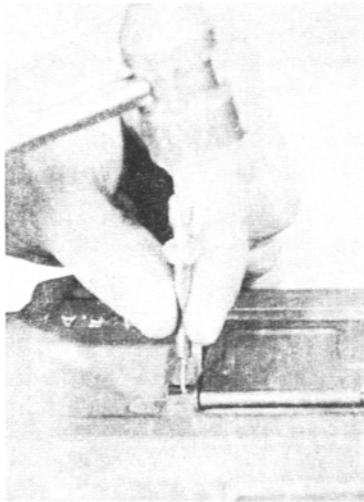
(Fig. 18)

16) Lift charging handle rod free from barrel assembly.(Fig. 19)



(Fig. 19)

17) Ejection port covers(active and inactive) are exchanged for left hand operation by pushing in the roll pin on the rear 'housing ejection port cover pin' and drawing the ejection port cover pin' to the rear.(Fig. 20)



(Fig. 20)

■ CONVERSION TO AMBIDEXTROUS FUNCTION

Conversion of right hand ejection to left hand ejection.

- 1) After the 13th step of disassembly, exchange extractors.
- 2) After 16th step, remove charging handle rod from barrel assembly, push out the roll pin from charging handle assembly, exchange charging handle to right side and reassemble.
- 3) After 17th step, exchange ejection port covers(active cover on the left side, inactive cover on the right side) for left hand ejection and reassemble.
- 4) In trigger housing group.
Push out the roll pin retaining ejector and pull out the ejector, bushing and spring from trigger housing, convert them to the opposite position and reassemble.

■ REASSEMBLE THE GUN

All parts are reassembled in the reverse order to the disassembly procedure.

■ CLEANING AND MAINTENANCE

It must be emphasized that all auto weapons require constant cleaning and maintenance. Because of the nature of the gas operated shotgun and the variety of ammunition encountered, 90% of all problems can be traced to build up of dirt and debris in the gas system.

This shotgun was developed using WINCHESTER 00 BUCKSHOT and its use is recommended.

*Maintenance of shotgun

Only basic field stripping is necessary for universal maintenance.

- 1) Clean bore and chamber using solvent.
- 2) Remove all built up dirt and debris from gas tower, guide rod, grooves.
- 3) Clean bolt and bolt carrier group, paying particular attention to extractors.
- 4) Lightly lubricate moving parts at wear points. Do not lubricate gas tower or piston as this will accelerate accumulation of debris.

■ ILLUSTRATED PARTS LIST

A. Barrel and Hand Guards Group.

ITEM	STOCK NAME	STOCK NO
1	Screw, Hand Guard Front	111779
2	Nut, Hand Guard Front	111780
3	Screw, Hand Guard Rear	111781
4	Washer, Hand Guard	120833
5	Hand Guard(L.H)	711715
6	Hand Guard(R.H)	711716
7	Tube, Cylinder	111718
8	Recoil Spring, Charging Handle	111724
9	Barrel Assembly	711858
10	Charging Handle Assembly	711706
11	Front Sight Assembly	711739

B. Bolt and Bolt Carrier Group

ITEM	STOCK NAME	STOCK NO.
1	Pin, Firing	111743
2	Spring, Firing Pin	111744
3	Pin, Firing Pin	111745
4	Lock	111752
5	Bar, Stroke	111845
6	Bolt(S.A)	111732
7	Extractor	111735
8	Sub-Extractor	111736
9	Plunger, Extractor	111737
10	Spring, Extractor	111738
11	Bolt Carrier assembly	711728
12	Bushing, Guide Rod	111790
13	Roller	111872

C. Receiver Group

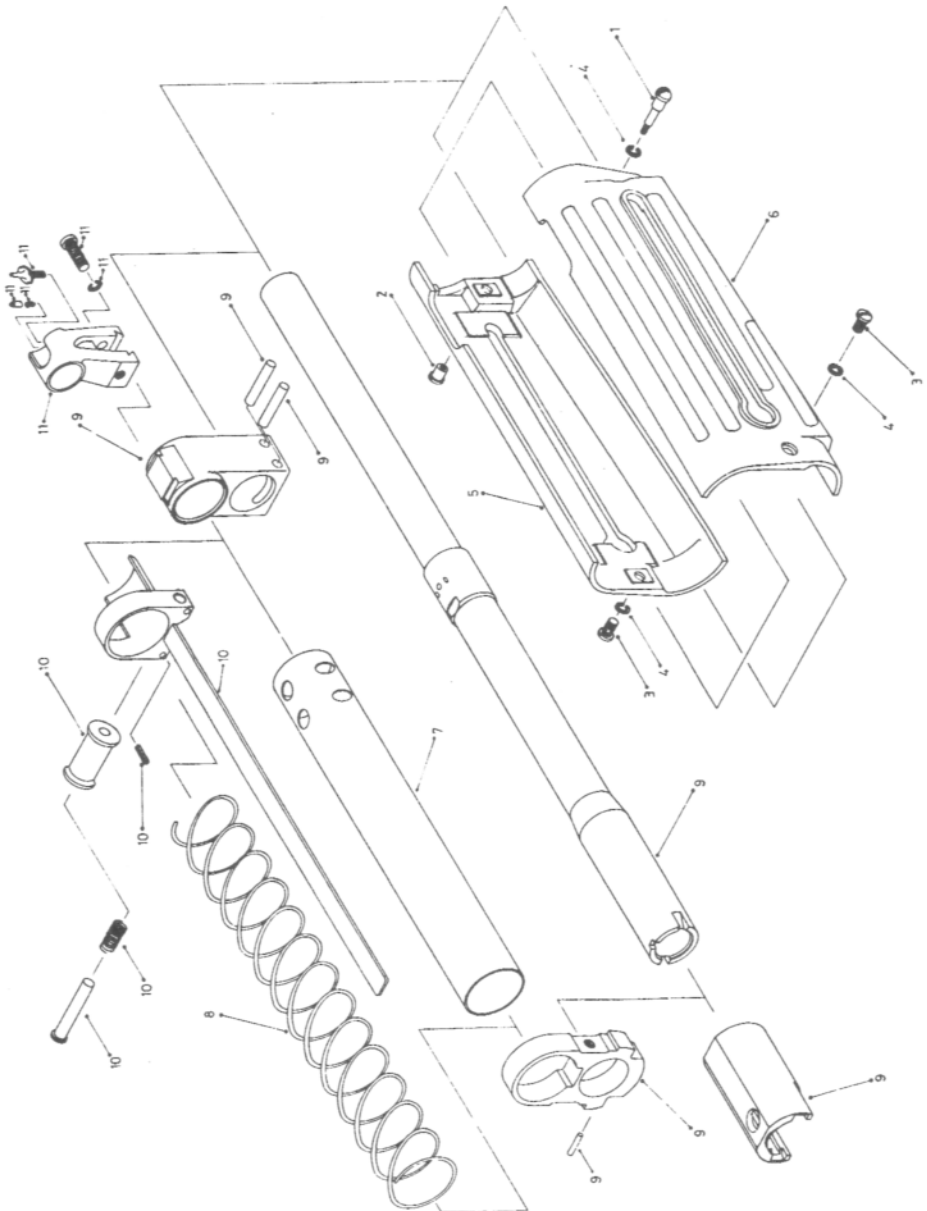
ITEM	STOCK NAME	STOCK NO.
1	Pin, Forward Assist Plunger	110127
2	Receiver	*
3	Pin, Ejection Port Cover	111708
4	Spring, Cover	111709
5	Rear, Sight	111846
6	Housing, Ejection Port Cover Pin	111814
7	Ejection Port cover Assembly	711704
8	Sub-cover Assembly	711719
9	Screw, Rear Sight Windage	110035
10	Drum, Windage	110036
11	Spring, Rear Sight	110040
12	Spring, Rear Sight Detent	110042
13	Detent, Rear Sight	110043
14	Pin, Trigger guard plunger	110120

D. Trigger Housing Group

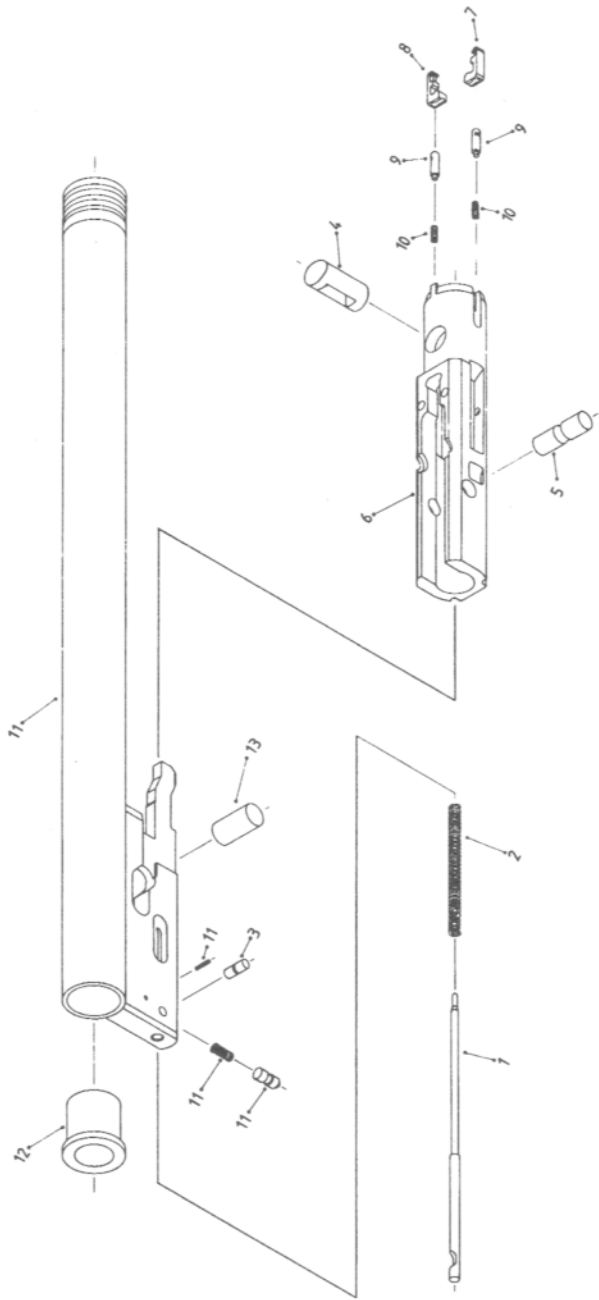
ITEM	STOCK NAME	STOCK NO
1	Guard, Trigger	110002
2	Plunger, Trigger Guard	110003
3	Spring, Trigger Guard	110005
4	Spring, Ejector & Safety Detent	110012
5	Pin, Hammer & Trigger	110025
6	Spring, Trigger	110027
7	Spring, Take Down Pin Detent	110030
8	Detent, Fire Control Selector	110045
9	Spring, Disconnecter	110052
10	Trigger	111896
11	Grip, Pistol	110070
12	Washer, Lock	110111
13	Screw, Pistol Grip	110118
14	Pin, Trigger Guard Plunger	110120
16	Bushing, Ejector	110925
17	Button, Magazine Release	110928
18	Spring, Hammer	110032
19	Ejector	111703
20	Housing, Trigger (S.A.)	111772
21	Hammer with Retainer	111763
22	Disconnecter	110087
23	Selector (S.A.)	111769
24	Sub-Selector	111818
25	Screw, Selector	111819
26	Spring, Magazine Catch	111821
27	Magazine Catch Assembly	711729
28	Spring, Receiver Retaining	111773
29	Screw, Receiver Retaining	111774
30	Nut, Receiver Retaining	111775

E. Butt Stock and Butt Plate Group

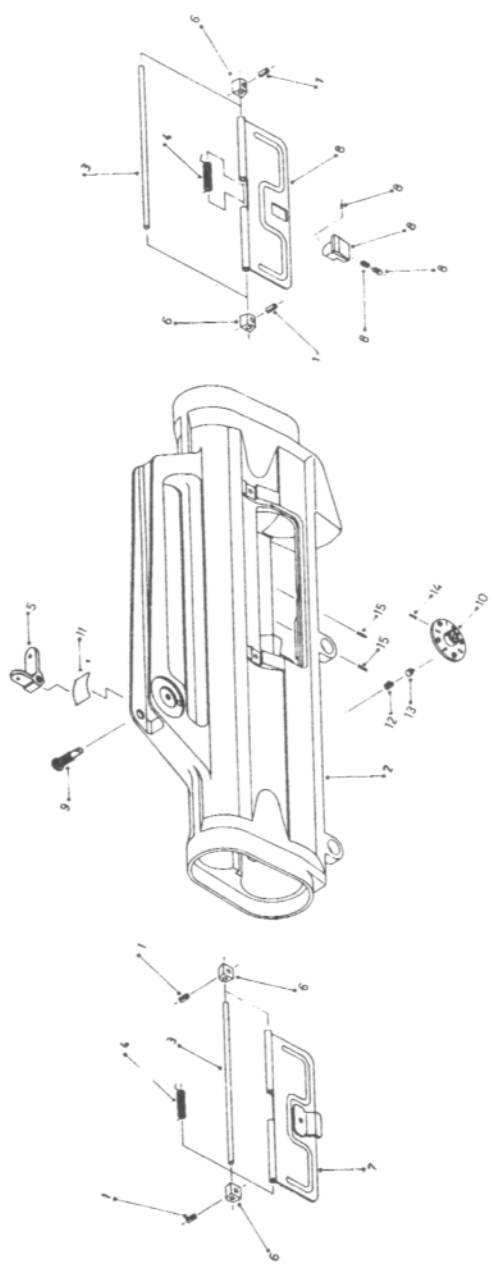
ITEM	STOCK NAME	STOCK NO
1	Stock, Butt	111783
2	Screw, Butt Cap	111810
3	Screw, Butt Stock	111811
4	Insert, Butt Stock	111812
5	Swivel, Sling Front	110081
6	Plate, Butt	111787
7	Pin, Guide Rod Retaining	111793
8	Rivet, Swivel Sling(Rear)	111809
9	Guide Rod Assembly	711722
10	Rubber, Butt Plate	711727
11	Cap Assembly	711708
12	Action Spring	111782
13	Buffer Spring	111898
14	Plug, Buffer Spring	111771



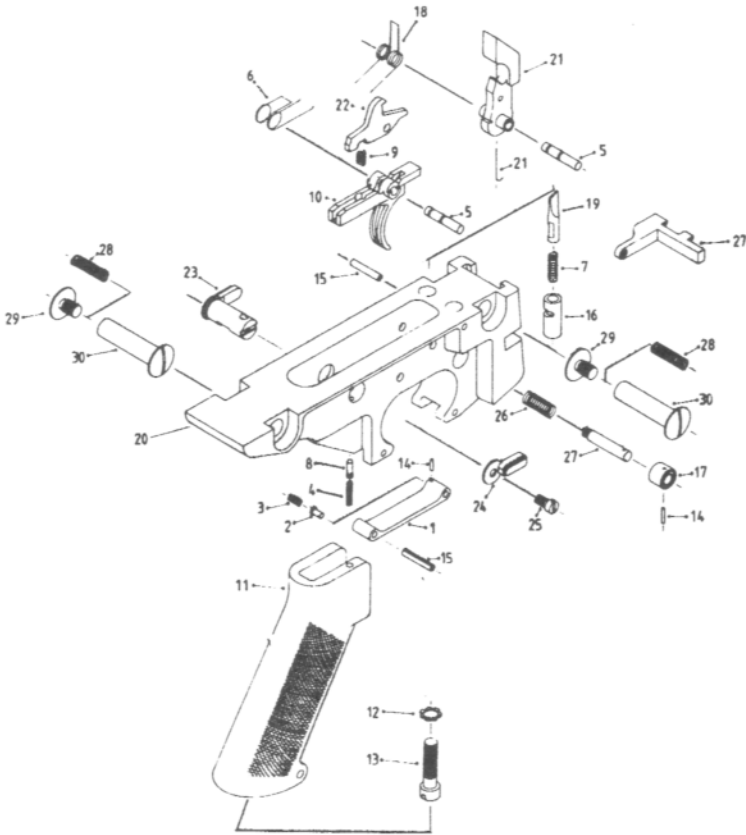
A. Barrel and Hand Guards Group



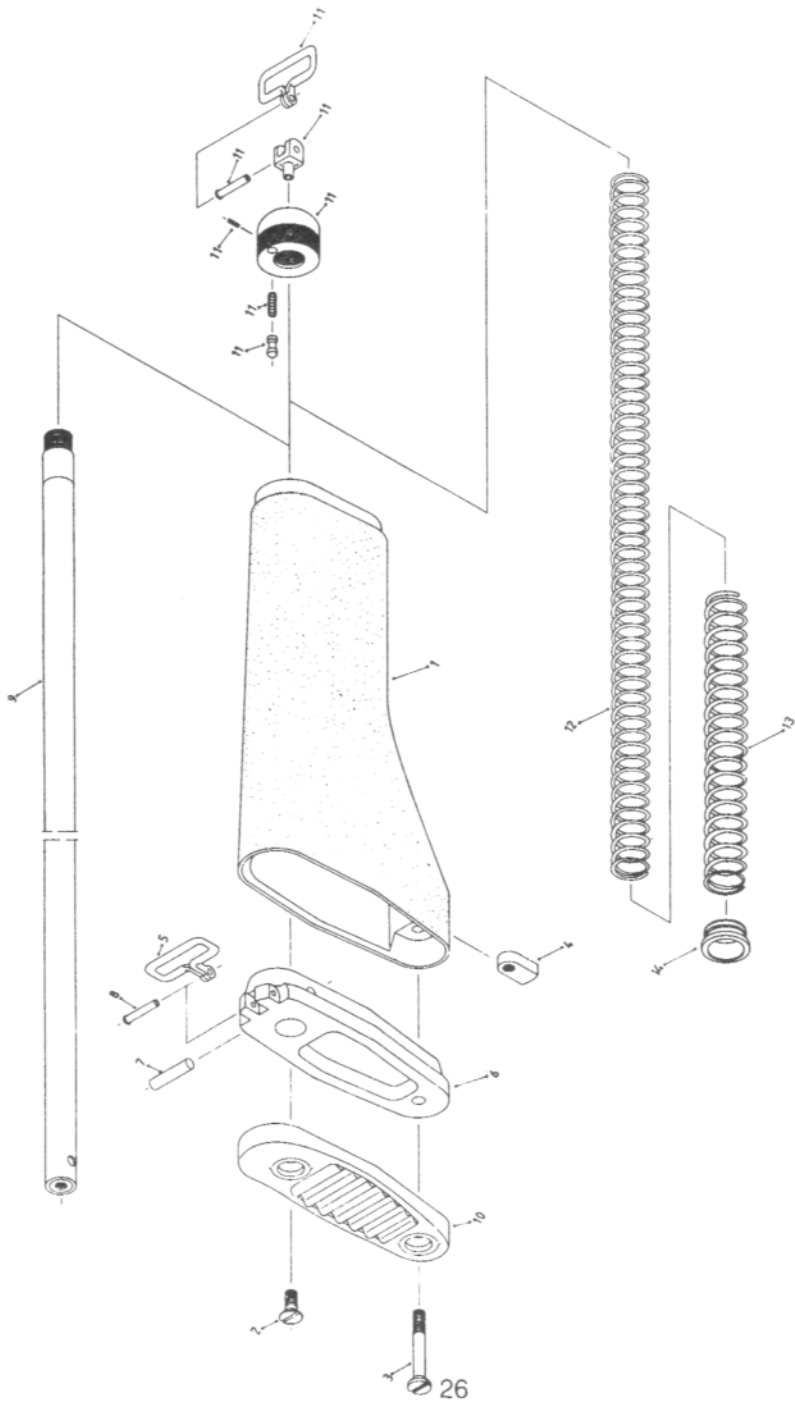
B. Bolt and Bolt Carrier Group



C. Receiver Group



D. Trigger Housing Group



E. Butt Stock and Butt Plate Group

■ **BASIC ISSUE ITEM LIST (BIIL)**

● **OPTION I**

USAS-12 (S. A.) BASIC ISSUE ITEMS LIST (BIIL)

STOCK NO.	DESCRIPTION	UNIT OF MEAS	QTY INC. IN NUIT	QTY OF SUPPLY WITH EQUIP.
711736	BOX, MAGAZINE ASSEMBLY * 10 RDS, SHOTSHELL CAPACITY	EA	1	2
110139	BRUSH, CLEANING RECEIVER	EA	1	1
110141	BOTTLE, ASSEMBLY, LUBRICANT	EA	1	1
110142	CAP. PROTECTIVE MUZZLE	EA	1	1
110987	CASE, CARRYING MAINTENANCE EQUIPMENT	EA	1	1
110808	SLING	EA	1	1
111894	CLEANING TOOL	EA	1	1
	OPERATING MANUAL	VOL.	1	1

● **OPTION II**

USAS-12 (S. A.) BASIC ISSUE ITEMS LIST (BIIL)

STOCK NO.	DESCRIPTION	UNIT OF MEAS	QTY INC. IN NUIT	QTY OF SUPPLY WITH EQUIP
711742	DRUM MAGAZINE ASSEMBLY * 20 RDS, SHOTSHELL CAPACITY	EA	1	1
711736	BOX, MAGAZINE ASSEMBLY * 10 RDS, SHOTSHELL CAPACITY	EA	1	1
110139	BRUSH, CLEANING RECEIVER	EA	1	1
110141	BOTTLE, ASSEMBLY * LUBRICANT	EA	1	1
110142	CAP. PROTECTIVE MUZZLE	EA	1	1
110987	CASE, CARRYING MAINTENANCE EQUIPMENT	EA	1	1
110808	SLING	EA	1	1
111894	CLEANING TOOL	EA	1	1
	OPERATING MANUAL	VOL.	1	1

DAEWOO PRECISION INDUSTRIES LTD.

C.P.O.BOX 1652. SEOUL, KOREA. TEL: (783) 5711 TLX: K26100 DPILTD