

SHOOTING'S THREE TIMES
MORE FUN

with a



**SERIES 180
GAS-POWERED
RIFLE**

"Power without Powder"
Crosman PELLGUNS[®]
High Velocity Air and CO₂ Gas BB GUNS

CROSMAN ARMS CO., INC., FAIRPORT, N. Y.

WORLD'S LARGEST MANUFACTURERS OF CO₂ GAS-POWERED RIFLES AND PISTOLS

Model 180 Series CO₂ Pellgun® Rifle

Operating Instructions

TO CHARGE RIFLE WITH CO₂:

Make certain there is no pellet in barrel. Fire rifle to exhaust residual gas.

1. Push safety lever down and back 180° to "ON" Position.
2. Unscrew and remove knurled tube cap. (If unable to turn by hand, DO NOT attempt to remove with pliers or other tools as this denotes the gun is under pressure.) Hold muzzle end down and used Powerlet will drop out.
3. Insert Powerlet in tube, neck end down. Screw tube cap firmly into place by hand.
4. Cock rifle to full power position, push safety lever up and forward 180° to "OFF" Position. Pull trigger to pierce Powerlet and to release gas in chamber. Rifle now under compression.
5. RECOCK RIFLE IMMEDIATELY TO ALLOW VALVE TO CLOSE, PREVENTING LOSS OF CO₂ GAS.

IMPORTANT: Proper oiling of Pellguns will eliminate most sealing failures. USE SPARINGLY. Excessive oiling is harmful to gun action. Three or four drops is sufficient for each seal or oiling point. Apply every 250 shots or when parts appear dry. Be sure "O" Ring on knurled tube cap is clean and free of foreign matter. Never use penetrating or detergent type oils, as they may be harmful to valve washers and seals. USE CROSMAN PELLGUNOIL® FOR BEST RESULTS.

TO LOAD AND SHOOT RIFLE:

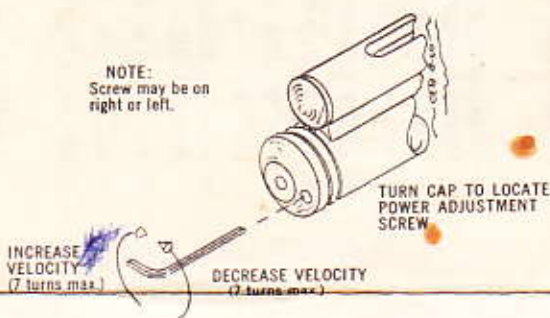
1. Cock rifle by pulling cocking button to the extreme rear click position.
2. Push safety lever down and back 180° to "ON" Position.
3. Lift breech bolt knob up, slide to rear. Place pellet (nose forward) in breech loading recess. Advance breech bolt lock down to right.
4. This rifle features the new two-step adjustable power which allows you to select low power position for short range economy shooting or high power position for longer range, by simply cocking to the power desired.

High power is obtained by pulling the cocking button to extreme rear click position. For low power cock gun to second click position.

This gun has been preset at the factory for average shooting conditions, but if more power or less power is desired, this can be attained by turning the adjusting screw in to increase power or out to decrease power. Fewer shots will be obtained if the power is increased.

Adjustment is made thru a hole in the cocking cap with a 6 x 32 (# 116) Allen Wrench. Adjustment may be desirable at temperature ranges extreme from room temperature.

CAUTION: Cocking failure may result if screw is turned in or out more than seven complete turns from factory setting.



5. Select target, push safety lever up and forward 180° to "OFF" Position, take aim, squeeze trigger to shoot.

TO UNLOAD PELLET FROM BARREL:

Rifle must be uncocked and breech bolt open. Insert 3/16" ramrod in muzzle end of barrel and push pellet out into loading channel.

TO REMOVE STOCK:

1. Push safety lever down and back 180° to "ON" Position, push safety assembly out of trigger guard casting from left side.
2. Unscrew and remove knurled locating nut on underside of stock.
3. Lift gun assembly out of stock.

TO REPLACE STOCK:

1. Press gun assembly firmly into stock.
2. Attach knurled nut on bottom of stock. Nut must be kept tight.
3. With a blunt instrument depress the safety rod assembly and with the safety lever pointing towards trigger, press safety assembly into hole in the trigger guard casting from the right side.

CARE OF RIFLE:

The Model 180 Series Crosman CO₂ Pellgun Rifle is a precision built gun of the most modern design and construction. Materials have been carefully selected for quality and long life. Before it is released for shipment, it has passed numerous rigid inspections and has been test fired for performance.

Treat it with the same fine care that you give your other valued possessions and it will give you many hours of carefree pleasure and enjoyment.

Never use steel darts or other hard missiles. Use only Crosman Super Pells for accuracy and long barrel life. The design and materials used in other brands can cause feeding failure and plugged barrels.

Do not expose charged gun or Powerlets to excessive heat.

REPAIR SERVICE:

Refer to the attached Service Station List for service, including warranty repair work, or see your dealer where purchased. Replacement Powerlets in a convenient pocket size pack, Crosman Super Pells, and Crosman Targets can be obtained at sporting goods dealers everywhere.

Always Follow These Simple Safety Rules:

1. Treat every Gun as if it is a loaded gun until you have personally proved otherwise.
2. Always keep muzzle of gun pointed in a safe direction.
3. Be sure of your target and your back-stop.
4. Conduct yourself as a true sportsman in using your gun.

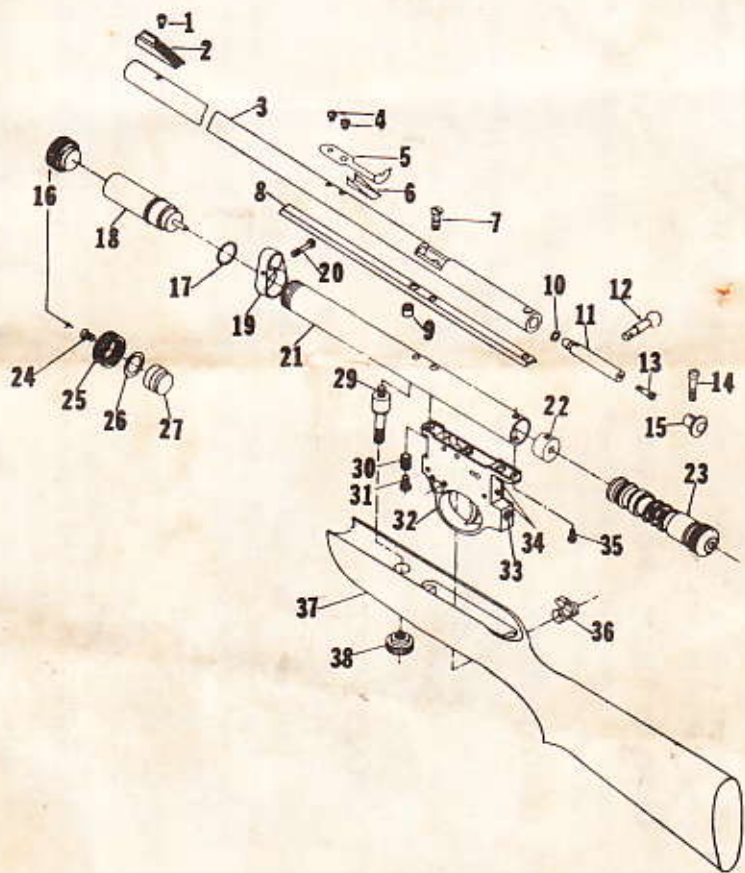


WARRANTY

This Crosman Pellgun is guaranteed against defective material and workmanship for a period of ninety (90) days from date of purchase, providing that the gun has not been subjected to abuse or misuse.

List of Parts and Assemblies:

REF. NO.	PART NO.	PART NAME
1	160-28	Front Sight Screw
2	160-22	Front Sight
3	180-73	Barrel
4	160-29	Rear Sight Screw
5	160-20	Rear Sight
6	160-21	Rear Sight Elevator
7	180-12	Hold Down Screw
8	180-9	Spacer
9	180-57	Breech Gasket
10	130-33	Breech Bolt Seal
11	180-72	Breech Bolt
12	180-70	Bolt Knob
13	180-71	Breech Bolt Screw
14	180-18	Breech Plug Screw
15	180-17	Breech Plug
16	180-64	Tube Cap Assembly
17	150-54	Ø 11 CO ₂ O Ring
18	180-81	Exhaust Valve Assembly
19	160-11A	Strap
20	180-22	Strap Screw
21	180-1	Tube
22	180-11	Inner Plug
23	180-63	Hammer Assembly
24	150-13	Connecting Screw
25	150-12	Tube Cap
26	150-54	Ø 11 CO ₂ O Ring
27	180-38	Rest Block
29	180-14	Locating Screw
30	180-15	Valve Stud
31	180-82	Casing Screw
32	160-47	Trigger Casing Assembly
33	140-39	Weight Screw
34	160-40	Creep Screw
35	130-31	Casing Screw
36	140-54	Safety Assembly
37	180-50	Stock
38	108-14	Locating Screw Nut



Only **Crosman** SERIES 180
CO₂ RIFLES HAVE
ALL THESE FEATURES:

- No pumping; powered by a single giant Crosman CO₂ Gas Powerlet. Approximately 40 shots at 450 f/p/s average muzzle velocity.
- All-steel barrel with new precision "Button Rifling".
- EVERY gun factory-tested to group shots under $\frac{3}{4}$ " at 25'.
- Easy fingertip cocking.
- Positive push-type cross-lock safety . . . shows red on "off" position.
- Carrying distance averages only 300' . . . ideal for limited area shooting.
- Smooth, easy bolt action.
- All blued steel; sport-style hardwood stock.
- Weight, 4 lbs.; length 34".

Ask to see the Crosman Model 180 Rifle in the complete, economical Home Shooting Set (Model 180-K).

The Finest
"POWER WITHOUT POWDER"
Pellet Guns Made