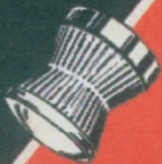


SHOOTING'S THREE TIMES
MORE FUN

with a



**SERIES 150
GAS-POWERED
PISTOL**

Crosman ARMS CO., INC.
FAIRPORT, NEW YORK

World's largest producer of pellet rifles and pistols

www.muzzle.de

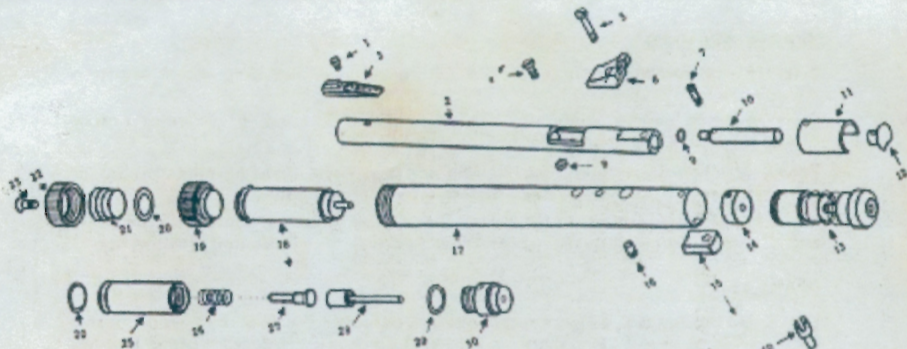
Only **Crosman** SERIES 150
CO₂ PISTOLS HAVE
ALL THESE FEATURES:

- No pumping; powered by one giant Crosman CO₂ Gas Powerlet. Approximately 50 shots at 400 f/p/s average muzzle velocity.
- Deluxe, rugged target sights . . . precision-made and mounted.
- Heavy-duty all-steel barrel with new precision "Button Rifling".
- Blued steel, tenite grip . . . shaped for left or right hand shooters.
- Every pistol factory-tested to group shots under 3/4" at 25'.
- Easy fingertip cocking.
- Positive push-type cross-lock safety . . . shows red on "off" position.
- Exclusive solid breech cover gives smooth, easy loading action.
- Carrying distance averages only 200' . . . ideal for limited area shooting.
- Weight, 1 lb., 10 oz.; length, 10".
- Choice of standard calibers:
.177 (Model 157) and .22 (Model 150).

Ask to see the Crosman Model 150 Pistol in the complete, economical Home Shooting Set (Model 150-K).

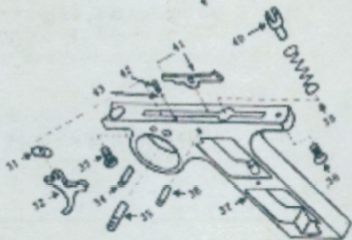
NO FIREARM PERMIT NEEDED

The Finest
"POWER WITHOUT POWDER"
Pellet Guns Made
www.muzzle.de



Specifications:

Barrel length	6"
Overall length	9"
Weight of gun	1 lb. 9 oz.
Model 150	.22 Cal.
Model 157	.177 Cal.



GUARANTEE CERTIFICATE

IMPORTANT

Keep this certificate. Must be presented to Crosman Authorized Service Station to qualify for warranty service.

Customer's Name

Street

Town State Model

Dealer's Signature Date Purchased

(See Over)

www.muzzle.de

List of Parts and Assemblies:

REF. NO.	PART NO.	PART NAME	REF. NO.	PART NO.	PART NAME
1	150-39	Front Sight Screw	23	150-13	Connecting Screw
2	150-35	Barrel	25	150-4	Piercing Body
3	150-58	Front Sight	26	111-28	Check Valve Spring
4	150-39A	Hold Down Screw	27	150-9	Steering Pin
5	150-57	Rear Sight Screw	28	150-80	Valve Stem Assembly
6	150-56	Rear Sight	28	150-28	"O" Ring
7	180-52	Breech Bolt Screw	30	150-5	Exhaust Valve
8	120-29	Breech Gasket	31	111-63	Take Up Spring
9	150-33	Bolt "O" Ring	32	105-13	Trigger
10	130-20	Breech Bolt	33	150-10	Front Frame Screw
11	180-18	Breech Cover	34	105-35	Trigger Pin
12	150-67	Breech Plug	35	105-38	Safety
13	150-62	Hammer Assembly	36	105-37	Sear Pin
14	150-18	Small Tube Plug	37	105-1	Grip Frame
15	130-64	Grip Frame Assembly	38	105-55	Rear Frame Screw
16	150-35	Thrust Pin	39	111-30	Sear Spring
17	150-1	Tube	40	105-48	Sear Spring Head
18	150-61	Valve Assembly	41	130-18	Sear
19	150-64	Tube Cap Assembly	42	105-45	Safety Spring
20	150-54		43	105-44	Safety Spring Ball
21	150-11	Rest Block			
22	150-12	Tube Cap			

When ordering parts please designate Model number on your gun.

Crosman www.muzzle.de

Authorized Repair Stations

The nationwide network of Authorized Crosman Factory Repair Stations listed hereon has been established for your convenience and in the interest of providing fast local service. All of these stations are fully equipped to handle repairs on all models of Crosman Pelleguns, including repairs to guns within guarantee period having malfunctions of a minor nature. Guns having a malfunction of a major nature should be returned to your dealer or direct to the factory at Fairport, N. Y.

The guarantee certificate attached to the instruction sheet that is packed with each Crosman gun should be properly filled out at time of purchase and must accompany your gun when sent to a Service Station for repair during the company's 90-day guarantee service period. In cases where the guarantee certificate has been misplaced a verification (Sales Slip) from your dealer will suffice.

NOTE: Air and CO2 Pistols can only be mailed to and from bona fide dealers and manufacturers and in turn must conform with Postal Laws and regulation requirements at time of mailing. Consult your Postmaster. These units may be sent by Railway Express with no restrictions.

CROSMAN ARMS CO. INC.

OCTOBER 1, 1959

Fairport, N. Y.



www.muzzle.de