

# RHINO

## USER'S MANUAL



**ATTENTION: BEFORE REMOVING THIS FIREARM FROM ITS PACKAGE READ & UNDERSTAND WARNINGS, INSTRUCTIONS AND PRECAUTIONS IN THIS USER'S MANUAL**

**Official Sponsor**



NASGW



## INDEX

---

Version Update June 2010

Warnings	3
Safety	3
Identifying Markings	6
Gallery	7
Revolver Revolution	8
Instructions for use	11
Loading	13
Decocking	13
Unloading	14
Shooting	15
Clearing misfires	16
Sight Adjustment	17
Cleaning	17
Lubrication	18
Ordinary and extraordinary maintenance	18
Exploded view	19
Parts list	20
ArmiSport / Chiappa Firearms Warranty	21

# WARNINGS

**Armi Sport/ Chiappa Firearms is not responsible for damage to objects caused by misuse of the gun or for injuries to persons or animals, or in case of death, caused voluntarily or involuntarily by the gun user.**

**Armi Sport/ Chiappa Firearms is not responsible for injuries caused by poor maintenance, misuse of the gun, unauthorized or improper modifications.**

**Armi Sport/ Chiappa Firearms declines responsibility for the indirect consequences of any injuries and / or death of persons or animals, damage to objects caused by use of the gun or by primer explosion, by bullet's ricochet, or unsafe loading practices and / or procedure.**

Read the entire manual and learn the proper use of the gun without live ammunition. It is important that you understand the proper use of this product. The life of the people close to you may depend on your safety.

If the manual is not clear, please contact the dealer where you bought the gun or call the distributor or the manufacturer by using the contact information provided within this manual.

ANY LEGAL DISPUTE WILL BE UNDER THE JURISDICTION OF A COURT IN THE STATE OF OHIO

## SAFETY RULES

1. Read the instructions carefully before use. Reading the manual and careful examination of the gun are fundamental to avoid any kind of problem.
2. Be aware that you are handling a firearm; therefore your knowledge and behaviour may affect your life and those of the people close to you.
3. Guns and ammunitions must be kept in separate places.
4. **ALWAYS** keep guns and ammunitions out of reach of children.
5. Store the gun in a clean dry and airy place after use to avoid rust in mechanical parts that may cause serious problems in functioning after a period of inactivity.
6. The gun must **ALWAYS** be stored unloaded, ALWAYS check that all the cylinder chambers are empty.
7. Keep away from open flame or heating sources.
8. Never leave a loaded gun unattended.
9. Never leave the weapon loaded, it could fall and cause injury and death. Always point the gun in a safe direction, and handle it as though it were loaded. This is especially important when loading and unloading the gun, and when handing it to someone else. Never take someone's word that it is unloaded. Always make sure the gun is unloaded before laying it down or handing it to someone else.
10. After use, clean and lubricate the inside of the barrel with appropriate oil. Avoid grease or oil build up that can cause excessive pressure and result in serious personal injuries. Before using the gun again, inspect the barrel and chambers to make certain that there are no obstructions in the bore. Remove any oil residue with rod and dry patch before shooting.
11. Accumulation of rust in the barrel can cause excessive pressures resulting in serious injury

- and may cause the explosion of the barrel.
12. Wash hands thoroughly after shooting and handling firearms to remove any unwanted residues.
  13. Pay great attention during transportation and use. Mechanical safety devices can fail. Developing intelligent, good safety habits is the best way to prevent accidents.
  14. **ALWAYS** keep the gun unloaded when transporting it from home to the shooting areas. Carefully check that cartridge chamber is empty.
  15. When you walk around with the gun in a shooting area, **ALWAYS** keep the muzzle pointed in a safe direction.
  16. Do not smoke while handling, loading or shooting any ammunition.
  17. Never drink alcoholic beverages or take any drugs before or during shooting, as this not only constitutes criminal disregard for your safety and that of others, but will seriously impair your judgment and vision. Never use a gun while you are taking medication unless you have checked with your doctor to ensure your fitness to handle the gun safely.
  18. Never rest your finger on the trigger until the very moment you wish to shoot. Always keep the safety on until you are ready to safely shoot at an intended target (see safety features).  
Note: Safety devices on guns are extras and are not a substitute for your proper and safe handling practices.
  19. Always wear and encourage others near you to wear proper ear protection when shooting, especially on a range since the noise from your gun, and other guns close to you, could result in permanent hearing loss.
  20. Always wear protective shooting glasses to protect your eyes from injury by gun powder, gas, lubricant, dirt or metallic particles, carbon residue, sparks or other debris.
  21. Use exclusively factory loaded ammunition of the caliber specified on the firearm. Use of different calibers may cause serious personal injuries to you and to people close to you.
  22. Before shooting **ALWAYS** check to ensure that the barrel is free of obstructions.
  23. When selecting a place to shoot, always be absolutely sure of your target and the area behind it before you touch the trigger, making sure there is an adequate backstop which will stop and contain bullets. A bullet can travel through or past your target with a range up to 1 1/2 miles. If you have any doubt, do not shoot.
  24. Keep all bystanders behind you, standing beside a shooter is not a safe position. Make sure all other shooters and bystanders are well away from the ejection port.
  25. Never shoot against a solid surface or in a pool of water, the projectiles could ricochet and shoot toward any direction.
  26. Do not attempt to re-use unexploded ammunitions.
  27. **NEVER** modify any parts of your gun. Any alteration may cause serious personal injury and voids the warranty.
  28. Only a qualified gunsmith may service the gun for repair or serious maintenance.

Armi Sport/ Chiappa Firearms declines any responsibility for misuse of the firearm.  
In case of alteration of the firearm, Armi Sport/ Chiappa Firearms declines any civil and penal responsibility and will not refund any damage.

**The user is responsible for injuries or damages caused to him or to other persons.**  
**COMPLETE KNOWLEDGE OF YOUR FIREARM CAN MAKE THE DIFFERENCE.**

**QUALITY INSPECTION: Every firearm is thoroughly inspected for function and cosmetic blemish prior to shipment**

## **IDENTIFYING MARKINGS:**

Every gun we produce has a serial number that is marked on the receiver. Close to the serial number you will also find the manufacturers information with the model name and caliber.

**These markings must not be removed from the firearm for any reason.**

## THE RHINO REVOLVER RANGE

MODEL	CODE	FINISH	CALIBER	Barrel length		Total length		Grooves and twist rate	
				IN	CM	IN	CM		
CF340.086	RHINO 200D	Black-rub grip	357 Mag	2"	5	6"1/2	16,4	9	1x476
CF340.078	RHINO 200DS	Black-rub grip	357 Mag	2"	5	6"1/2	16,4	9	1x476
340.071	RHINO 40 DS	Black-wood grip	357 Mag	4"	10	8"12	21,5	9	1x476
340.075	RHINO 40 DS	Black-wood grip	357 Mag	4"	10	8"12	21,5	9	1x476
340.072	RHINO 50 DS	Black-wood grip	357 Mag	5"	12,7	9"12	24	9	1x476
340.076	RHINO 50 DS	Black-wood grip	357 Mag	5"	12,7	9"12	24	9	1x476
340.073	RHINO 60 DS	Black-wood grip	357 Mag	6"	15,2	10"1/2	26,6	9	1x476
340.077	RHINO 60 DS	Black-wood grip	357 Mag	6"	15,2	10"1/2	26,6	9	1x476

### Available accessories:

791.011	Holster for mod. 20 DS-D, suede
791.012	Holster for mod. 20DS-D, brown leather
791.013	Holster for mod. 20DS-D, black leather
270.051	Rubber grip, small
780.106	Wooden grip, medium, checkered
780.107	Wooden grip, large checkered



# GALLERY



**RHINO 200 D  
AND 200 DS (2" barrel)**



**RHINO 40 DS (4" barrel)**



**RHINO 50 DS (5" barrel)**



**RHINO 60 DS (6" barrel)**



# REVOLVER REVOLUTION

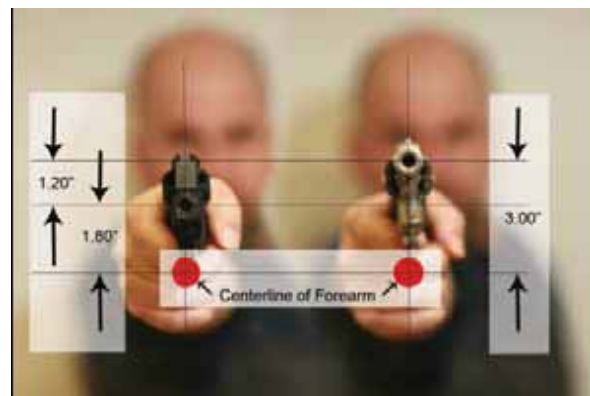
Rhino is the first revolver with truly modern mechanics, designed for a serial, industrial production. Each component is machined from solid steel with the most modern machinery available in the gun industry today. The result is an ultra smooth action, a perfect trigger pull, greater fluidity, lightness and steadiness when shooting. The appearance is like no other revolver you have ever seen.

Typically a revolver fires from the top most chamber which is aligned with the barrel. The new Chiappa Rhino barrel is aligned with the bottom most chamber which is the key component to Rhino's tame characteristics. Due to the lower position of the barrel, the Rhino's appearance is abstract from any other revolver design. The position of the barrel lowers the center of gravity and yields a centerline of the bore more in line with the shooters arm allowing for the most natural "point ability" while engaging a target.

The natural "point-ability" is only the start of where the Rhino stands alone, this characteristic drastically reduces both recoil and muzzle flip which insures subsequent shots to be on target faster than ever before. The reduction of the recoil allows for the use of ultra light alloys to be used in the construction of the Rhino minimizing any adverse effect. The flat sided cylinder design of the Rhino reduces the typical revolver profile allowing greater concealment.

## Reduction of Felt Recoil

As the wrist is almost straight, the recoil is discharged on the straight arm. To give an explanation according to the laws of physics, the "arm of the lever" is very small, and this nearly eliminates the "dynamic moment" which follows the shot in all handguns. Basically, the dynamic moment becomes a static moment, nullifying the amplification of the reaction to recoil which generates on the top of the hand.



## Minimal Muzzle Flip

The strong pressure generated by a powerful caliber usually causes a muzzle flip effect after shooting (dynamic moment), which is proportional to the lever angle created by the high position of the barrel and consequent angle of the wrist. The muzzle flip effect has two negative consequences: one is the physical strain, both when you bear the knock and when you counterbalance it, pushing your hand with equal power into the opposite direction to regain the initial position. The second is the time you lose while your arm and hand are travelling up and down, which is obviously taking time on the sequence of shots. Rhino revolver requires a wrist angle near to zero, thus minimizing muzzle flip and related consequences: subsequent shots on a target are all in the center, and do not tend to slide upwards.



# SAFETY FEATURES

This firearm is equipped with several safety features which, if properly employed, can minimize the danger of accidental discharge.

**WARNING : All traditional revolvers which feature a single action mode have an outer hammer and therefore the single action mode is directly visible. The Rhino revolver has an inner hammer which is activated by a lever connected to the outer "false" hammer. The single action mode IS NOT VISIBLE BY RHINO THROUGH THE EXTERNAL HAMMER, as the latter always goes back to rest position. You will be aware of the single action mode through the red flag jutting out from the frame and the trigger completely pulled back.**

**NOTE: Never rely on mechanical safeties to overcome improper maintenance or unsafe handling practices.**

**NEVER ASSUME THE REVOLVER IS UNLOADED. You can never be sure a revolver is unloaded unless you check that the cylinder is open and no cartridges are in place.**

## Trigger guard

The trigger guard is a loop of metal that surrounds the trigger, protecting it from damage or accidental discharge.

## Inner hammer

The traditional hammer, when the gun is in single action mode, may be accidentally activated. This danger is eliminated by the Rhino revolver, as the external hammer is operating the inner hammer through a cocking lever which, not being exposed, is not sensitive to accidental activation when the revolver falls or is hit inadvertently.

## Automatic trigger safety

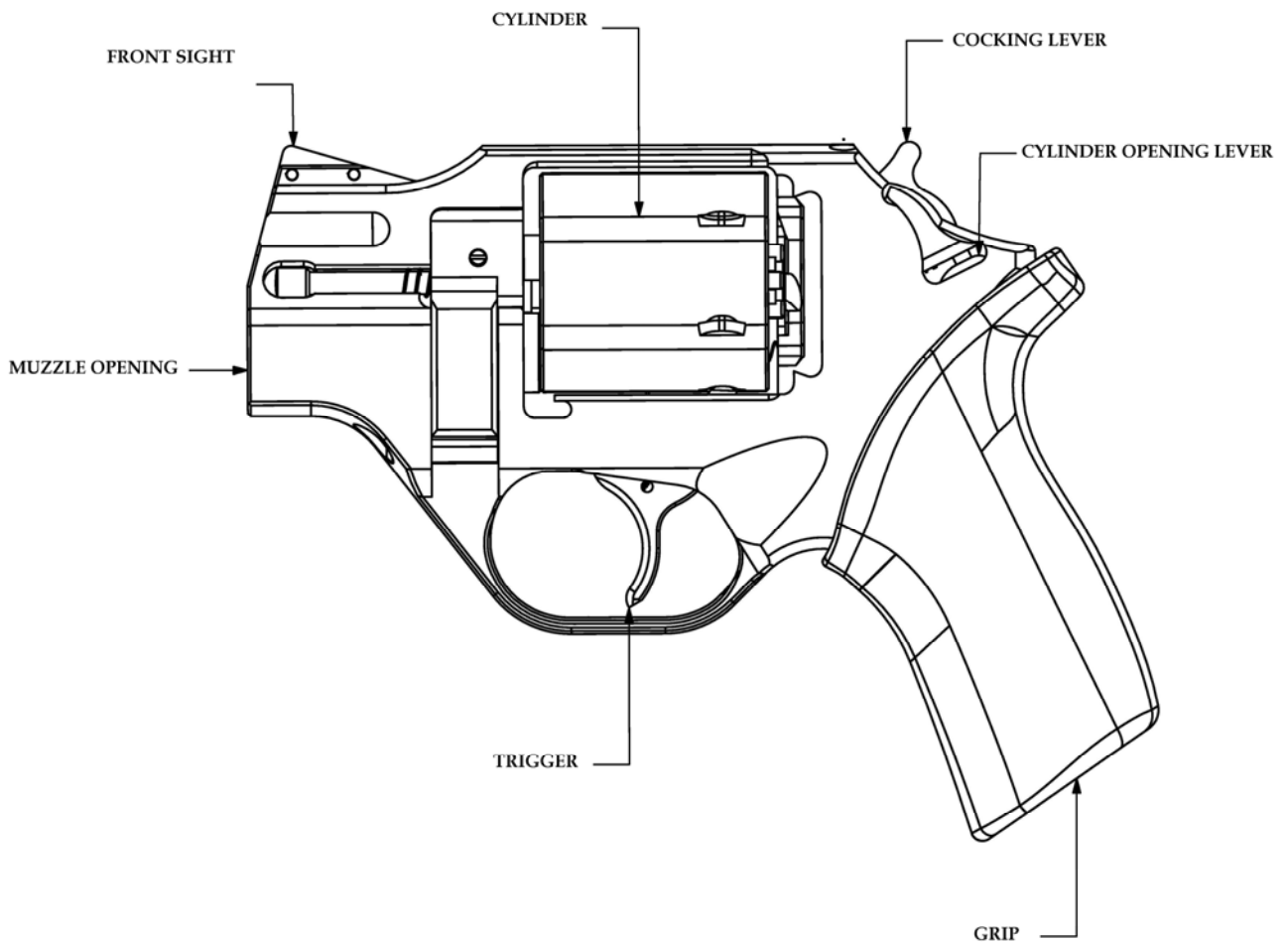
The automatic inner safety avoids that the hammer may approach the firing pin before the trigger has been pulled. By uncocked position the hammer cannot approach the firing pin. This safety is disengaged only when the trigger is pulled to firing position.

## Cylinder safety

Rhino features two cylinder safeties: one is working in case the cylinder is not perfectly closed, and will hamper the revolver from firing. The second is activated in case the cylinder chamber is not perfectly aligned with the barrel bore. In this case, the trigger cannot be pulled to firing point.

### Single Action Flag

By traditional firearms, the hammer is visible and therefore it is easy to detect whether the firearms is in single or double action mode. By the Rhino revolver a red flag on the left of the rear sight indicates, even by touch, the single action mode. Attention: when the flag is jutting out, the revolver is ready to fire.



# INSTRUCTIONS FOR USE

## Ammunition

### NOTICE

WE SPECIFICALLY DISCLAIM RESPONSIBILITY FOR ANY DAMAGE OR INJURY WHATSOEVER OCCURRING IN CONNECTION WITH, OR AS THE RESULT OF, THE USE OF FAULTY, OR NONSTANDARD, OR "REMANUFACTURED" OR HANDLOADED (RELOADED) AMMUNITION, OR OF CARTRIDGES OTHER THAN THOSE FOR WHICH THE FIREARM WAS ORIGINALLY CHAMBERED.

- A firearm and ammunition are a system and must work together. There are different types of ammunition for different types of firearms. Your firearm has been designed for ammunition of a specific type and a specific gauge or caliber. It is important to select the proper ammunition for your firearm.
- Different combinations of bullet velocity, bullet weight and firearm weight can have major impact on felt recoil. To acclimate yourself to higher levels of felt recoil, use a firm two-hand hold on the grip when firing. Always start your shooting experience with the lowest bullet velocity and lowest bullet weight available for your firearm.
- Death, serious injury, and damage can result from the use of wrong ammunition; bore obstructions, powder overloads, or incorrect cartridge components.
- Use only ammunition specifically recommended for your firearm (locate the cartridge designation marked on the firearm. This information indicates the correct ammunition that must be used in this firearm)
- Always use cartridges of the same caliber as that indicated on the frame. You are responsible for selecting ammunition that meets industry standards and is appropriate in type and caliber in this firearm.
- Use only high quality, original factory manufactured ammunition whose pressure cannot be higher than the one stated by S.A.A.M.I. or C.I.P. Never use non-standard, reloaded or hand loaded ammunition which has not been subjected to internal ballistic pressure testing.
- Your gun has been designed for ammunition of a specific caliber – do not alter the barrel, chambers, caliber for which your gun was designed. In some cases, ammunition not specified on your firearm may fit into the chamber. Firing ammunition not specified on your firearm may cause rupture and serious injury or death to you or others.
- Be sure you never mix ammunition.
- Firearms may be severely damaged, and serious injury to the shooter or others may result from any condition causing excessive pressure inside the chambers or barrel during firing. Excessive pressure can be caused by obstruction in the barrel, propellant powder overloads, or by the use of incorrect or defectively assembled cartridges. In addition, the use of a dirty, corroded or damaged cartridge can lead to a burst cartridge case and consequent damage to the firearm and personal injury from the sudden escape of high-pressure propellant gas within the firearm's mechanism.
- Some brands of ammunition may cause difficulty in extracting spent cartridge cases from the cylinder or chamber. If this situation occurs, thoroughly clean the cylinder charge holes or chamber with solvent. If this condition persists, we recommend changing to another brand of ammunition.

- Don't oil cartridges, and be sure to wipe the chamber clean of any oil preservative before commencing to shoot. Oil interferes with the friction between cartridge case and chamber wall that is necessary for safe functioning, and subjects the firearm to stress similar to that imposed by excessive pressure.
- Use lubricants on the visible parts of your firearm. Avoid excessive spraying of any aerosol gun care product, especially where it may get on ammunition. All lubricants, and aerosol spray lubricants in particular, can penetrate cartridge primers and cause misfires. Some highly penetrative lubricants can also migrate inside cartridge cases and cause deterioration of the propellant powder; on firing, the powder may not ignite. If only the primer ignites, there is a danger that the bullet may become lodged in the barrel.

**The use of improper ammunition voids the warranty.**

## Inspection of the revolver

When you inspect your revolver, you must first check for yourself to ensure that it is unloaded. Do this with your finger off the trigger and out of the trigger guard and keep the barrel of the firearm pointed in a safe direction. Press the cylinder opening lever downwards (Figure 1) and push the cylinder to the left (Figure 2).

You must verify that all charge holes are free of live rounds and the barrel is free of any obstructions. You must follow this procedure every time your revolver leaves your hand, is cleaned, handed to you or another person, transported or stored.



FIGURE 1 (cylinder opening lever)



FIGURE 2 (cylinder pushed open)

# Loading

Keep muzzle pointed in safe direction and follow all safety procedures at all times. Practice these steps with an unloaded revolver or dummy ammo until you are completely familiar and comfortable with the procedures. Use live ammo only when you are prepared to shoot. Always use clean, dry, high quality ammunition (of the proper caliber) that meets industry performance standards.

- Do not load the revolver until you are ready to use it. Keep your finger off the trigger and outside the trigger guard until you are ready to fire.
- Never load your revolver until you are at the shooting site and fully prepared to fire.
- To load your revolver, hold it in one hand with the muzzle pointed in a safe direction and away from you and others.
- Keep your finger off the trigger and out of the trigger guard.
- Press the cylinder opening lever downwards to unlock the cylinder.
- Push the cylinder to the left and place a round of the correct ammunition in each charge hole.
- Grasp the revolver in the shooting hand with your finger still outside the trigger guard
- Push the cylinder back into the frame until it locks into place. Your revolver is now fully loaded. The hammer is in the “at rest” position.

# Decocking

Rhino has an inner hammer and an external hammer (a false hammer). When you push the External hammer downwards, the inner hammer is cocked and the gun is in single action. When the gun is in single action, a red pin (flag) is jutting out on the frame (on the left side of the rear sight), and the External hammer will go back to its original position.

If you decide not to fire in single action from a cocked position, continue to point the firearm in a safe direction and then decock the revolver as follows:

- (1) While keeping your fingers well away from the trigger guard, place the thumb of your firing hand on the external hammer and pull it completely back (figure 1).
- (2) Keeping the gun pointed to a safe position, pull the trigger while keeping the external hammer in cocked position (figure 2).
- (3) Carefully ease the external hammer downwards while releasing the trigger, until both are in the “at rest” position
- (4) Make sure that the flag is back into the frame and not jutting out.

**WARNING:** Practice this procedure with your unloaded revolver until you have mastered decocking. Always be aware of the external hammer position. Never holster, carry or store a cocked revolver. Always check that the trigger is in the “at rest” position.



Figure 1 : Cocking the external hammer



Figure 2: Pulling the trigger



Figure 3: Releasing the external hammer

## Unloading:

1. Point the muzzle in a safe direction. Make sure your finger is off the trigger and the trigger is in the "at rest" or forward position.
2. To remove either live cartridges or spent casings from the cylinder, first point the barrel in a safe direction. Press the cylinder opening lever downwards and swing and hold the cylinder fully to the left.
3. With the barrel pointing upward in a safe direction, press the extractor rod through the cylinder and remove all cartridges or casings from the cylinder.
4. Carefully count the cartridges or spent casings to be sure that you have recovered all of them. Make a visual check to be sure all charge holes (chambers) are empty. When unloading your revolver, always be sure to keep it pointed in a safe direction. Remember, a safe direction means that you are not pointing the barrel of your handgun at yourself or anyone or anything you do not intend to shoot.

## Shooting / Firing

Always wear eye and hearing protection when shooting.

Point muzzle in a safe direction.

Load revolver as previously directed.

Grip the frame firmly.

Place index finger on trigger, take aim and gently squeeze rearward until hammer is released and falls forward striking the firing pin. Be prepared for loud noise and recoil.

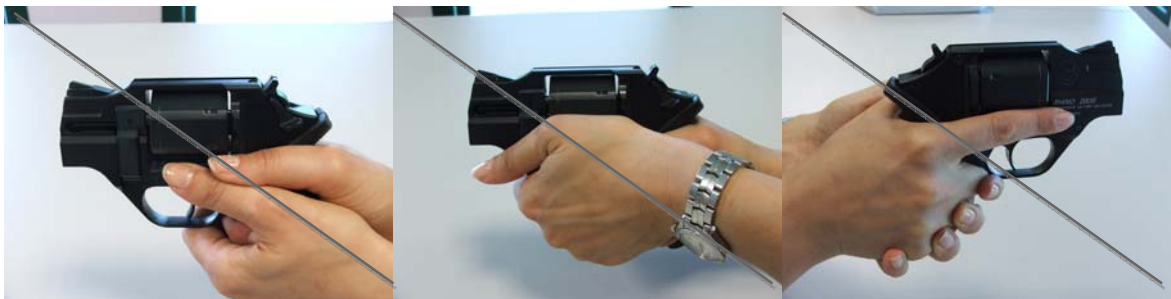
Continue procedure until cylinder is empty.

If all rounds have not been fired and you wish to stop shooting, follow procedures for unloading previously described.

Always use the proper two-hand hold grip. This keeps hands and fingers away from the barrel/cylinder gap.

Never allow hands or fingers to extend beyond the front of the cylinder when firing. This is an improper hold for any revolver.

## VERY IMPORTANT: GRIP INSTRUCTIONS



### WRONG GRIP

Always make sure that you keep your hands and fingers away from the cylinder and the gap between cylinder and frame. In particular, your fingers should never be in front of the cylinder chambers as the gas escaping from the gap between barrel and cylinder could hurt your fingers.



### PROPER TWO-HANDS GRIP



There are two ways to fire the RHINO revolver. The first is in the double action mode, wherein the shooter fully pulls and holds the trigger to the rear, causing the hammer to fully cycle rearward and then release.

The second way to fire the revolver is in the single action mode, in which the hammer is first cocked and the trigger is then pulled and held to the rear. A lesser amount of trigger pressure and travel are necessary to fire the revolver when the hammer is in the cocked position. It is your responsibility to exercise great care in handling a revolver especially when it has been placed in the single action or cocked mode.

#### DOUBLE ACTION FIRING

- Never touch the trigger until you are ready to fire.
- To fire the handgun, pull the trigger fully to the rear. The inner hammer will move rearward and then fall forward to fire the revolver. After firing, you must allow the trigger to move forward fully before you can fire another shot. Failure to do so will prevent the lockwork from fully cycling and will prevent you from being able to fire the next shot.
- Keep your finger off the trigger and outside the trigger guard until you are ready to fire again. Do not touch or otherwise interfere with the travel of the external hammer during double action firing.

#### SINGLE ACTION FIRING

- Never touch the trigger until you are ready to fire.
- Pull the external hammer fully rearward until it is cocked. The action of pulling the external hammer to the rear activates an inner lever which cocks the inner hammer and will also cause the trigger to move rearward. By this position the external hammer will go back to rest position, while the flag signaling that the inner hammer is cocked will be jutting out. The revolver will now fire in the single action mode, requiring significantly less trigger pressure and significantly less travel than in the double action mode.
- Pull the trigger and hold it rearward.
- After firing, you must allow the trigger to move fully forward before you can fire another shot. Failure to do so will prevent the lock work from fully cycling and will prevent your being able to fire the next shot.
- Keep your finger off the trigger and outside the trigger guard until you are ready to fire again.

## Clearing misfires

**WARNING: IF YOUR HANDGUN GIVES ANY INDICATION THAT IT IS NOT PERFORMING PROPERLY OR THE OPERATION OF YOUR HANDGUN HAS CHANGED "THE WAY IT FEELS OR SOUNDS", STOP FIRING. MAKE SURE THE FIREARM IS POINTED IN A SAFE DIRECTION, UNLOAD THE FIREARM AND HAVE IT INSPECTED AND TEST- FIRED BY A GUNSMITH QUALIFIED TO PERFORM SERVICE ON RHINO FIREARMS.**

- If a cartridge fails to fire, wait ten seconds while keeping the muzzle pointed in a safe direction. Keep your finger off the trigger and out of the trigger guard.
- Press and hold the cylinder opening lever downwards and swing the cylinder to the left.
- Remove the defective cartridge and dispose of it in a method specifically approved for live round disposal.

## Sight Adjustment (not available by models 20D and 20 DS)

The rear sight is adjustable for windage & elevation. To adjust your point of impact to the "RIGHT", unscrew the windage sight screw and move the rear sight to the right; to adjust your point of impact to the "LEFT", tighten the windage sight screw to move the sight to the left. To adjust your point of impact up, unscrew the elevation sight screw and move the rear sight down; to adjust your point of impact to go down, tighten the elevation sight screw to go up.

## Disassembly (field stripping) and Assembly

We recommend that you take your revolver to a professional gunsmith for disassembly and assembly. The only part which can be safely removed by a shooter is the grip, which can be disassembled and re-assembled through the relevant screw.

## Cleaning

**Attention: Careful and detailed cleaning of this firearm is essential to guarantee its safety and proper function.**

- Every time you use your gun it is advised to clean it in order to remove all corroding agents (humidity, powder or lead residues etc.) which can in time alter a few parts.
  - In order to perform a standard cleaning, it is sufficient to utilize a good solvent, cleaning oil, and a little brush.
  - For a deeper cleaning, please contact your local gunsmith
  - Always clean the barrel running cleaning rods through it.
1. Run a wet patch through the cylinder. Let soak a few minutes. (Always read the manufacturers' directions of the cleaner you are using)
  2. Run a dry patch through to remove loose crud/deposits.
  3. Run a wet brush through the barrel a few times.
  4. Run a dry patch to remove the dirt.
  5. Repeat steps 3 and 4 a few times until the patch comes out clean.
  6. Lightly oil the barrel. NOTE: Run a dry patch through the barrel before firing to remove oil.
  7. Open the cylinder and follow the same clearing procedure described above to clean all chamber
  8. Clean the revolver surface with a cloth and clearing oil
  9. Dry the chamber with the special brush, dry the surface of the revolver and store in a safe place

# Lubrication

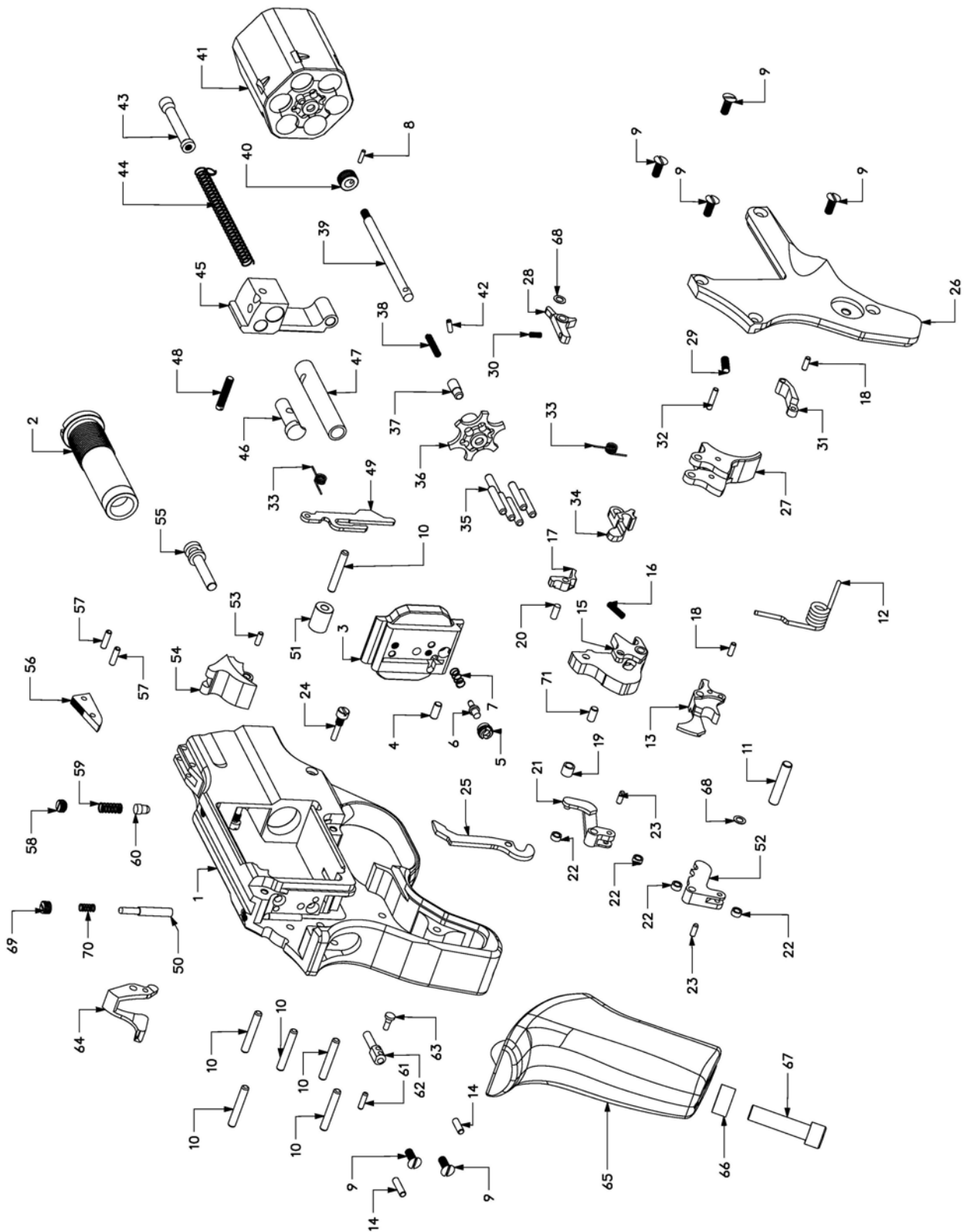
To lubricate moving mechanical parts (trigger assembly) you can use a standard firearms oil. This operation should be performed only when necessary, and not as a standard maintenance. In order to perform lubrication, unscrew the allen key fixing the grip, remove the grip and lubricate the hole on the top of the frame.

An extraordinary clearing of inner components should be carried out by professional personnel (gunsmith) and in this case we recommend to use a dry lubricant, MoS<sub>2</sub> based (molybdenum disulfide).

## Ordinary and extraordinary maintenance

- Before conducting any sort of maintenance, make sure the firearm is unloaded.
- By “ordinary maintenance” we refer to measures the user should take to keep the gun in good working conditions.
- An “Extraordinary maintenance” implies the replacement of broken parts and therefore disassembling the gun. In this case only authorized personnel or a qualified gunsmith should handle the task.
  - Also a long period of heavy use or inactivity requires an extraordinary maintenance; your gun should be taken to a qualified gunsmith to have the action disassembled for professional cleaning and lubrication.
- Your gunsmith will advise the best lubricant for the good maintenance of your revolver.
- Do not leave oil residues when cleaning and lubricating your firearm.
- Make sure that the mechanism of the weapon is easy; if it starts to stiffen, or if corrosion is starting on some essential parts, you should bring your gun to competent, professional personnel.
  - Do not use pure silicon or lanolin.
  - In the following pages you will find exploded views with a list of all parts
  - When ordering parts, it's important to specify date of purchase, serial number, model, caliber and item reference of the part/s needed.
  - If the gun has a problem that you cannot fix, DO NOT FIRE it but send it to an authorized center for a check-up. If you try to fix it personally, you may put in serious danger yourself and the people near you in serious danger.
  - Always pay great attention and handle the gun very carefully, in order to avoid terrible accidents which may change your life and that of others.

# EXPLODED VIEW



# PARTS LIST

Pos.	Code	Description	Pos.	Code	Description
1	700129	Frame Rhino 20/200	39	730819	Extractor rod
2	710282	Barrel Rhino 20/200 cal. .357 Mag	40	730816	Cylinder insert
3	770483	Breech shield	41	770487	Cylinder
4	130000	Pin 3x6,8	42	130087	Spring pin 2x6
5	730876	Firing pin grub screw	43	730820	Extractor rod head
6	730810	Firing pin	44	720110	Ejector spring
7	720021	Firing pin spring	45	770486	Cylinder arm
8	130081	Pin 1,5x5,8	46	730821	Cylinder hook
9	101003	Screw, M3x8, TORX	47	730813	Cylinder rotation axle
10	130013	Pin 3x19,8 (Rhino 20DS and 200DS only)	48	730842	Swing axle pin
11	130035	Pin 4x19,8	49	760127	Cocking lever (Rhino 20DS and 200DS only)
12	721132	Main spring	50	730872	Single action flag (Rhino 20DS and 200DS only)
13	770475	Interlink lever	51	730807	Cocking lever link sleeve 20DS and 200DS only)
14	130089	Pin 2,5x7,8	52	770479	Hammer spring lever
15	770.477A	Inner hammer	53	130005	Pin 2x9,8
16	720108	Hammer sear spring	54	770481	External hammer for Rhino 20DS and 200DS
17	770478	Hammer sear		770493	External hammer for Rhino 20D and 200D
18	130029	Pin 2x5,8	55	730814	Cylinder arm rotating pin
19	730805	Hammer sleeve	56	770485	Front sight
20	730951	Pin 2,5x6	57	130038	Spring pin 2x8
21	770476	Return lever	58	730906	Notched grub screw M5x4
22	730806	Roller	59	720060	Cylinder stop spring
23	730839	Pin 2x5,5	60	730812	Cylinder unhook pin
24	730815	Cylinder arm screw	61	130007	Pin 2x7,8
25	760126	Lifting lever	62	730808	Cylinder release plunger
26	770484	Lock plate	63	730809	Cylinder release plunger pin
27	770472	Trigger	64	770482	Cylinder opening lever
28	770480	Single Action Lever 20DS and 200DS only)	65	270051	Rubber grip
29	104013	Screw, M3x8, allen key head	65	780106	Wooden grip medium for except 20D and 20DS
30	720109	Single Action Lever Spring 20DS and 200DS only)	66	730822	Grip screw washer
31	770474	Connecting rod	67	100014	Allen key screw M5x15
32	130054	Pin 2x10	68	730839	Sleeve 0,2 Rhino 20DS and 200DS
33	721131	Trigger spring		730905	Sleeve 0,2 Rhino 20D and 200D
34	770473	Cylinder stop lever	69	730873	Flag grub screw Rhino 20DS and 200DS
35	130012	Pin 3x15,8		730903	Flag grub screw Rhino 20D and 200D
36	730817	Extractor	70	720005	Flag spring (Rhino 20DS and 200DS only)
37	730818	Extractor plunger	71	130057	Pin d. 3x6
38	720056	Extractor plunger spring			

# WARRANTY CONDITIONS

Armi Sport guarantees that our products are scrupulously checked against defects in materials, workmanship and aesthetical and functioning problems.

In case you find a defect in one of our products, you should immediately contact the DEALER/SHOP/GUNSMITH where you have bought your gun. The seller will indicate the conditions for the repair, which will be either made directly by them or through our assistance.

**ATTENTION: in case you need to send us back a firearm for repair, either under guarantee or against payment, please address to the shop dealer or importer where you bought the firearm. This will allow us to follow the correct procedure; furthermore, transportation of weapons is strictly regulated and in some countries the documents which are required can solely be issued by companies with a specific authorization.**

1. Armi Sport will warrant for structural or project defects without any time limit.
2. Armi Sport guarantees, for a year after the purchase date, the free substitution of parts for defects which have been found out also during use: wear of parts which shouldn't be subject to wear, or excessive wear of parts subject to wear. The customer will have to give evidence of the purchase date with a bill or other valid proof.
3. In case the defect under cover of guarantee is not repairable, Armi Sport will provide for a free substitution of the weapon.

ARMI SPORT RESERVES THE RIGHT OF DEFINING THE TYPE OF DEFECT OF THE WEAPON, AND THEREFORE TO STATE WHETHER THE DEFECT IS COVERED BY GUARANTEE  
Armi Sport's decision will be fair but final.

Armi Sport will be allowed a timing of 60 days for repair under guarantee, and 90 days for free substitution.

We strongly recommend that you keep the receipt  
or proof of purchase for any Armi Sport product

## **THE GUARANTEE IS VOID IN CASE:**

- Inadequate ammunition has been used (any ammunition but those commonly on sale, reloaded ammunition, different from caliber and specification indicated on the gun barrel)
- The gun failed to be provided proper maintenance and cleaning
- The gun has been modified without our prior consent
- Unauthorized, inadequate or incorrect repairs have been carried out
- Parts subject to wear and corrosion
- Damage (improper use of the gun by the user)
- Expired guarantee

In the above cases the repair, if carried out, will be charged to the customer

## **The guarantee does not cover parts subject to wear and corrosion**

In case non original spare parts are used, the guarantee or any service contract with Armi Sport will be void.

ATTENTION: delivery expenses to and from the service center are not covered by the guarantee and will be charged to the customer.

In case, for any valid reason, you do not have the possibility to obtain repair under guarantee at the shop where you bought the gun, you may contact us directly; we will indicate a local dealer to support you with the repair file:

**USA - Phone: 937-835-5000**  
**Italy- Phone: +39/030/9749065**  
e-mail: [info@chiappafirearms.com](mailto:info@chiappafirearms.com)

**Should Chiappa Firearms / Armi Sport become aware of a defect of a product during the guarantee period, the defective part will be replaced free of charge.**

**This instruction manual must always follow the firearm, including change of ownership**

### Procedure for the usage of the guarantee

BEFORE shipping the weapon back for repair, the customer should contact the gunshop where the product was bought. The customer should supply proper information on the defect, and the relevant file will then be started.

The gun shop will be given an "NDR" (Repair Number). The weapon will have to be shipped back to the gun shop in its original packing, with a copy of the purchase date, the Guarantee Form (attached) duly filed with indication of the NDR number, according to the instructions of the dealer.

ATTENTION: the returned gun must be protected with adequate packaging; any damages occurred during transportation and handling will be the customer's responsibility



## Request form

# REPAIR UNDER GUARANTEE

NdR NDR : \_\_\_\_\_

Please write in the above box the Repair Number you were given  
by the gun shop

### 1. Customer data:

- Name: \_\_\_\_\_
- Address : \_\_\_\_\_
- Town : \_\_\_\_\_
- ZIP Code : \_\_\_\_\_
- Phone : \_\_\_\_\_ Available from \_\_\_\_ to \_\_\_\_
- Fax : \_\_\_\_\_

### 2. Product information:

- Model : \_\_\_\_\_
- Serial number : \_\_\_\_\_

### 3. Gun Shop - dealer:

- Purchase date : \_\_\_\_\_
- Dealer name : \_\_\_\_\_
- Dealer address : \_\_\_\_\_

### 4. Description of defect:

---

---

---

---

Documents to attach: Proof of purchase date

# CHIAPPA firearms

Chiappa Firearms, Ltd.  
6785 W. Third Street  
Dayton, OH 45427 USA  
Tel. 937-835-5000  
[www.chiappafirearms.com](http://www.chiappafirearms.com)  
email: [info@chiappafirearms.com](mailto:info@chiappafirearms.com)



Armi Sport  
di Chiappa Silvia & C Snc  
Via Milano N°2 Azzano Mella (BS)  
Tel. 030 9749065 Fax 030 9749232  
[www.armichiappa.com](http://www.armichiappa.com)  
email: [info@armisport.com](mailto:info@armisport.com)



Kimmar Srl  
Via Milano N°2 Azzano Mella (BS)  
Tel. 030 9749065 Fax 030 9749232  
[www.armichiappa.com](http://www.armichiappa.com)  
email: [info@kimmar.com](mailto:info@kimmar.com)