

SAFETY PRECAUTIONS

1. Always handle any gun as if it were loaded.
2. Keep the hammer in its safety notch at all times until intending to shoot.
3. Before use, check that the barrel is free of any obstruction.
4. Be particularly careful when unloading the revolver to check the cylinder to be certain a live round does not remain in the revolver.
5. Never point a gun at anything you do not wish to shoot, even if you think it is unloaded.
6. Store guns and ammunition separately, beyond the reach of children.
7. Avoid alcoholic beverages before and during shooting.
8. If you do not thoroughly understand the proper use and care on your gun, seek the advice of someone you know who is competent in this area.
9. Never place a loaded gun into a vehicle or lean the gun against any object. The gun should be emptied and placed in a case when not in use.
10. Don't abuse your gun or your hunting/shooting privileges.

WARNING!

To prevent injury, death or damage to property, the owner of this single action revolver must handle gun correctly and keep it properly maintained. Furthermore, it is vital for safety to use only high quality ammunition that is of the correct fit and caliber for this pistol.

AMMUNITION

- Use only commercially manufactured ammunition which pressure cannot be higher than the ones stated by S.A.A.M.I. or C.I.P.
- Your gun has been designed for ammunition of a specific caliber - do not alter the barrel, chamber, caliber for which your gun was designed. Be sure you never mix ammunition.
- Use only ammunition specifically recommended for your firearm. (Proper Ammunition specified on barrel and cylinder).
- The use of reloaded Ammunition voids the warranty.

Any questions be directed to:
Cimarron Firearms, Co. Inc. at 1-830- 997-9090

Copyright © 2008 Cimarron Firearms Co. Inc.
All text and graphics belong solely to Cimarron Firearms Co. Inc.

WARNING: Careless and improper handling of this gun could result in unintended discharge causing injury, death or property damage. Safety must be the first and foremost when handling a firearm and ammunition.



INSTRUCTION MANUAL

BEFORE REMOVING THE FIREARM FROM THIS PACKAGE, READ & UNDERSTAND THE PRECAUTIONS IN THE INSTRUCTIONS MANUAL

This Chiappa Firearms / Cimarron Firearms, Co. Inc. product is classified by the Alcohol, Tobacco, and Firearms Division of the U.S. Treasury Department as a firearm or dangerous weapon; it is, therefore, potentially lethal!

FIREARMS SAFETY-IS YOUR RESPONSIBILITY
SAFETY MUST BE THE FIRST AND CONSTANT
CONSIDERATION OF EVERY PERSON WHO HANDLES
FIREARMS AND AMMUNITION.

This Instruction Manual is designed to assist you in learning how to use and care for Your Cimarron PLINKERTON revolver properly. Please contact us if you have any questions about it.

Only when you are certain you fully understand the Manual and can properly carry out its instructions should you practice loading, unloading, etc. with live ammunition. If you have any doubts about your ability to handle or use a particular type of gun safely, then you should seek supervised instruction. Such personalized instruction is often available from gun dealers, gun clubs or police departments. If none of these sources can help you, write to the National Rifle Association, 11250 Waples Mill Road, Fairfax, VA 22030-7400. They will assist you.

The person possessing a gun has a full-time job. You cannot guess; you cannot forget. You must know how to use your firearm safely. Do not use any firearm without having a complete understanding of its particular characteristics and safe use.

TABLE OF CONTENTS

	Page
General Information and Mechanical Characteristics	2
Ammunition	2
Handling	4
To Load and Fire	4
To Uncock (Decock) The Revolver	4
To Unload or Eject Cartridge Cases	5
To Remove or Replace Cylinder	5
Disassembly	5
Reassembly	5
Care and Cleaning	5
Storage	5
The Basic Rules of Safe Firearms Handling	6
Parts Drawing	7
Parts List	8
Fixed Sights	9
Service and Parts Policy	9
Shipping Firearms For Repair	9
Warranty Information	9&10

"PLINKERTON" is a registered U.S. trademark.

ONE YEAR LIMITED WARRANTY

This Chiappa Firearms, Ltd. Firearms distributed by Cimarron Firearms, Co. Inc. is warranted to the original retail customer for one year from the date of purchase against defects in material and workmanship. All parts and labor are covered. The warranty registration card must be completed and returned to obtain warranty coverage.

Transportation to and from our warranty service center, damage caused by failure to perform normal maintenance, sales outside of the United States, damage due to the use of high pressure or other non-standard ammunition, unauthorized repair or modifications, misuse, abuse, and any alterations of this product is not covered by this limited warranty. Any misuse of the revolver handguns to include abuse by "fanning" the hammer, slip hammer shooting, and the "Cylinder Ring" that may be developed either from normal use or the improper engagement and operation of the single action is not covered by this warranty.

To obtain warranty service, send your product with proof of retail purchase , freight prepaid to:

Chiappa Firearms, Ltd.
Attn: Warranty Service Center
530 N. Union Road
Dayton, Ohio 45427

Any questions relating to warranty service should be directed to
Chiappa Firearms Ltd., at 1-937- 854-1040

QUALITY INSPECTION: Every firearm is thoroughly inspected for function and cosmetic blemish prior to shipment.

REPAIR POLICY: Any firearm found to be defective must be returned to Chiappa Firearms Ltd,'s authorized repair center for examination and repair. Call Chiappa Firearms, Ltd. for the shipping address and instructions before shipping your firearm. A copy of your completed service agreement card, sales receipt or other proof of the date of purchase must be enclosed. A letter containing a detailed description of the specific problem, the owner's name, address and phone number or email address must be received with the firearm before repair will begin. Please allow 60 days after receipt for repair to be made. Replacement will be made only if the firearm cannot be repaired. Cimarron and or Chiappa Firearms, Ltd. reserves the right to make this decision. Our decision will be fair but final. See 'FIREARMS SERVICE AGREEMENT' enclosed with this firearm.

SHIPPING DAMAGE: Every firearm is thoroughly quality inspected for damage or defect immediately before shipping. If damage or defects are found during quality inspection the firearm is not shipped. If you receive a damaged firearm it was damaged during shipment. Call Cimarron shipping for instructions. A claim must be completed before returning the firearm to Cimarron. It is your responsibility to work with us until the claim is filed. Damaged firearms must be returned within 30 days.

RETURN POLICY: Any firearm returned for any reason including repair must have prior approval and a return authorization number on the outside of the box. Call (830) 997-9090 or send email to parts@cimarron-firearms.com for your R.A. number before returning firearms. Give a brief description of the problem. Any firearm received without a R.A. number will be returned. Questions regarding returns should be directed to the shipping/receiving department.

RETURN PACKAGING: Requirements: **SAVE THE BOX** and **PACKING MATERIAL**. Firearms must be packaged for return exactly as they were packed when received by the dealer. Specifically:

1. Firearm must be oiled and wrapped in the plastic bag as received.
 2. Firearm is then wrapped in bubble wrap or other similar packaging material as received by dealer to prevent movement in the box while in transit.
 3. Firearm must be placed in original box with Styrofoam or cardboard spacers in proper place in front of barrel and in back of butt as received by dealer.
 4. **YOU ARE RESPONSIBLE FOR PROPER RETURN PACKAGING. CIMARRON IS NOT RESPONSIBLE FOR DAMAGE INCURRED TO THE FIREARM IN RETURN SHIPMENT.**
- METHOD OF SHIPMENT:** Call Cimarron Firearms Co. at (830) 997-9090 for shipping instructions and ship to address. Ship prepaid UPS or FedEx properly insured.

VOID of WARRANTY NOTICE: Only new commercially manufactured ammunition should be used in Cimarron firearms.

SIGHTS AND SIGHTING: Standard Plinkerton Models do not have adjustable sights. Most will shoot center but some may shoot slightly left or right of dead center. We do not guarantee them to shoot dead center for each individuals shooting style. Do not attempt to correct sighting by bending the front sight.

FIREARMS ARE DANGEROUS WEAPONS, READ THE INSTRUCTIONS AND WARNINGS IN THIS MANUAL THOROUGHLY AND CAREFULLY BEFORE USING.

WARNING—ALTERATIONS

This product was designed to function properly in its original condition. Alterations can make it unsafe. Do not alter any part or add or substitute parts or accessories not made by Chiappa Firearms, Ltd. Or any accessories made available by Cimarron Fire Arms Co., Inc.

DO NOT ALTER ANY GUN

THE NAME PLINKERTON IS DESCRIPTIVE OF THE TYPE OF SHOOTING FOR WHICH THIS MODEL IS DESIGNED AND THAT IS PLINKING, GENERAL SHOOTING OR HUNTING. THIS FIREARM IS NOT DESIGNED FOR TIMED SHOOTING COMPETITION OR FAST DRAW AND WE DO NOT WARRANT THE GUN TO PERFORM TO RIGOROUS COMPETITION USE.

The Cimarron PLINKERTON revolvers chambered for 22 long rifle are intended to be used with any standard make of 22 long rifle, long or short ammunition in either regular, high velocity or hyper-velocity loading. Two cylinders are furnished with some PLINKERTON revolvers. The standard cylinder is chambered for 22 Long Rifle cartridge. (22 Short and 22 Long cartridges can also be fired in the Long Rifle cylinder.) The cylinder chambered for the 22 Magnum cartridge (Winchester Magnum Rimfire) is marked .22 Magnum.

WARNING: Fire only 22 Magnum cartridges in the MAGNUM cylinder. Do not fire 22 Short, Long or Long Rifle cartridges in the MAGNUM cylinder. Such cartridges will burst and can cause injury to the shooter and persons nearby.

AMMUNITION (CARTRIDGES) NOTICE

WE SPECIFICALLY DISCLAIM RESPONSIBILITY FOR ANY DAMAGE OR INJURY WHATSOEVER OCCURRING IN CONNECTION WITH, OR AS THE RESULT OF, THE USE IN "PLINKERTON" REVOLVERS OF FAULTY, OR NONSTANDARD OR CARTRIDGES OTHER THAN THOSE FOR WHICH THE FIREARM WAS ORIGINALLY CHAMBERED.

Death, serious injury, and damage can result from the use of wrong ammunition; bore obstructions, powder overloads, or incorrect cartridge components. Always wear shooting glasses and hearing protection.

PLINKERTON INTERNAL KEY SAFETY

This product was designed internal keyed safety . Any alterations can make it unsafe. Do not alter any part of the safety mechanism.

SAFETY OPERATION



Figure 1

The Cimarron PLINKERTON revolvers utilize a special key (Figure 1) to operate the internal locking safety mechanism. Insert the key into the safety as shown in figure 2, and turn the safety either direction until the two red dots oppose each other, when the revolver is on "SAFE" the safety mechanism will protrude from the receiver. (See figure 3)



Figure 2



Figure 3

To place the revolver in "FIRE" position, turn the key either direction until the two red dots are close together. The safety mechanism will be flush with the receiver when in the "FIRE" position. (See Figure 4)



Figure 4

1	700116	Frame S.A Plinkerton
2	740163	Extractor Tube
3	730344	Extractor Screw
4	740164	Extractor Button
5	730345	Extractor Rod
6	721084	Extractor Spring
7	740257	Cylinder
8	730346	Cylinder Rod
9	730347	Cylinder Rod Spring Screw
10	730348	Cylinder Rod Spring Nut
11	720050	Cylinder Rod Spring
12	740258	Hammer
13	730349	Hammer Screw
14	130007	Pin 2x7,8
15	730350	Hammer Pin
16	740166	Loading gate
17	130025	Pin 4x8
18	730763	Safety System
19	100010	Safety Screw
20	730764	Safety Stopper
21	130008	Safety Detent Ball
22	720001	Safety Spring
23	120000	Frame Screw
24	721085	Hammer Spring
25	720051	Spring
26	120014	Trigger Spring Screw
27	721086	Trigger Spring
28	740259	Trigger
29	730351	Trigger Screw
30	760068	Cylinder stop
31	740169	Pawl (Cylinder)
32	721087	Pawl Spring (Cylinder)
33	750090	Left Grip
34	750091	Right Grip
35	730322	Nut
36	103017	Grip Screw
37	207036	Medallion (Grip)
38	720007	Firing Pin Spring
39	740167	Backstrap
40	730765	Firing Pin
41	730766	Firing Pin Bushing

**FIREARMS ARE DANGEROUS WEAPONS,
READ THE INSTRUCTIONS AND WARNINGS IN THIS MANUAL
THOROUGHLY AND CAREFULLY BEFORE USING.**

HANDLING

ALWAYS WEAR SHOOTING GLASSES & HEARING PROTECTION

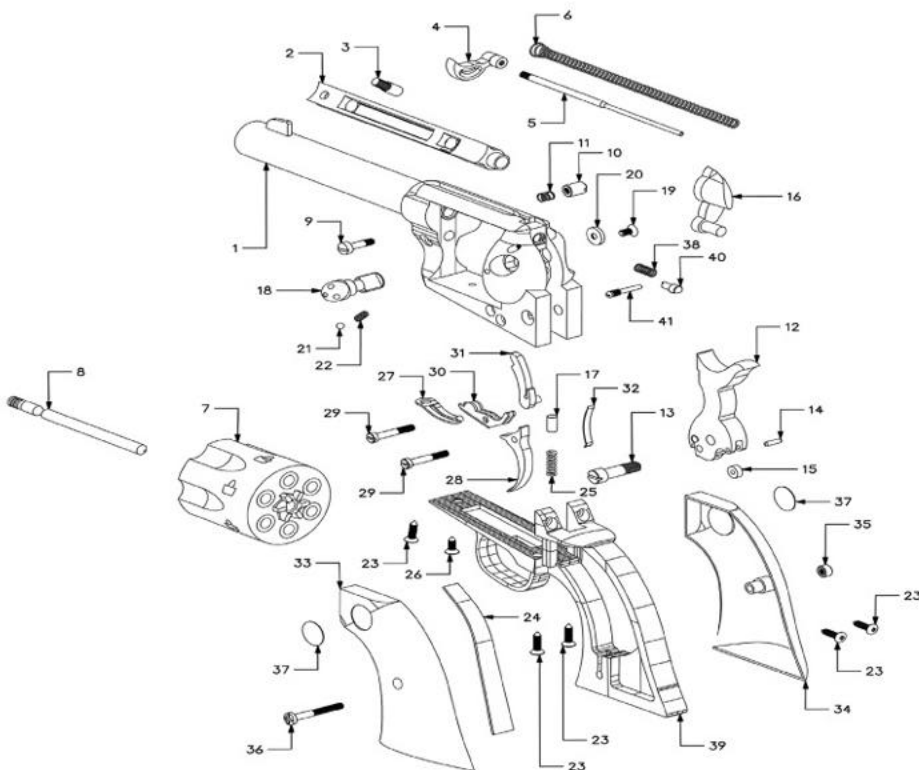
CARRYING: Single action revolvers, should always be carried with the hammer down on an empty chamber to prevent accidental discharges caused by a blow to the hammer.

LOADING & UNLOADING

1. Do not load the revolver until you are ready to use it.
2. Point the revolver in a safe direction
3. Pull the hammer to the second notch "Half-Cock" position, this permits the cylinder to rotate freely.
4. Open the loading gate to expose the chambers.
3. Turn cylinder clockwise, by hand, and insert cartridges in chambers until the cylinder is loaded and close the loading gate.

WARNING: Do not carry this revolver with a live round chambered under the hammer and firing pin. Keeping an empty chamber under the hammer is good insurance against accidental firing.

4. Align a empty chamber so that the hammer will rest on a empty chamber. Pull the hammer to the rear and carefully ease hammer forward while pulling the trigger, allowing the hammer to rest over the empty chamber. The revolver is now in its normal carrying condition – hammer and trigger fully forward, with hammer on a empty chamber.
6. Cocking – To fire the revolver, the hammer must first be manually cocked. When cocking the hammer, have a firm hold on the grip with the shooting hand, and **DO NOT TOUCH THE TRIGGER WHILE COCKING THE HAMMER. TOUCH THE TRIGGER ONLY WHEN YOU ARE READY TO FIRE.** With the fore portion of your thumb firmly on the hammer spur, draw the hammer fully to the rear until it stops. Then permit the hammer to move forward (it will only move slightly) until the trigger engages in the hammer at full cock.
7. Firing – Once the hammer has been cocked, a light pressure on the trigger will disengage the trigger from the hammer. The hammer will fall forward striking the firing pin and the revolver will fire.



SPECIAL WARNING FOR RIMFIRE AMMUNITION

When loading the cylinder, be sure to push each cartridge fully into the chamber to avoid interference of the cartridge rim with either the frame of the revolver or the loading gate. Failure to fully seat the cartridge and any attempt to force the cylinder to rotate or to force the loading gate closed could lead to possible detonation of the cartridge and injury to the shooter. Remember to always keep the muzzle pointed in a safe direction when loading, and to close the loading gate after loading before handling further. NEVER DRY FIRE your revolver. If you do this you will ruin your cylinder and the ammunition will not enter the chamber in the correct way.

UNLOADING

Draw the hammer to its half-cock position and open the loading gate on the right rear part of the frame. Push out each cartridge or empty case with the ejector rod located under the barrel. Operate the ejector rod in each chamber to its full length to assure full length case ejection. Close the loading gate after you are sure that all six chambers in your revolver are empty.

CLEANING

Check first to make sure your revolver is empty. Then remove the cylinder using the following steps:

1. Open the loading gate.
2. Put the hammer in its half-cock notch.
3. Depress the base pin catch. This is the spring loaded plunger which is located on the left front side of the frame. Keep it depressed.
4. Slide the base pin all the way out. The base pin is the pin which the cylinder revolves on. It should always be clean and lubricated.
5. Remove cylinder toward the loading gate taking special care not to lose or misplace the loose fitting bushing located toward the front of the cylinder. (Note: See image below for the proper placement of the bushing.) The cylinder is made to fit your revolver precisely and can be removed and replaced easily, but carefully. It is a close fit, so don't force it to move in any direction. To reassemble, simply reverse the steps used in removal, with the cylinder bushing conical opening facing the back of the cylinder. When you reassemble the base pin, make sure the base pin catch snaps back to its regular position. You can test this by making sure the plunger is free to move when you depress it and it returns under its own spring pressure. Use a aluminum or brass cleaning rod (not steel), a brass bristle brush, and patches appropriate to your revolver's caliber to clean it. Use a good quality cleaning solution to scrub the bore and each cylinder. While scrubbing the bore, always brush all the way through the bore; never try to reverse directions while the brush is actually in the barrel or chamber. After scrubbing, run clean patches through the bore and chambers until they come out clean. Then completely, but lightly, oil the entire revolver. Use your revolver carefully and safely. Help us to help you keep and protect your right to gun ownership.

Cylinder Bushing



DO NOT MISPLACE!

Always keep pistol pointed in a safe direction!

CORRECT BUSHING POSITION



5

INCORRECT BUSHING POSITION



SAFETY INSTRUCTIONS

Whether you are an experienced safe shooter and are familiar with these safety instruction procedures, or have some or no familiarity with handling a gun, it is imperative that you read carefully and thoroughly this entire instruction manual and follow the safety instructions to ensure you are familiar with the proper and safe use of this firearm to prevent personal injury, death, or property damage.

CAUTIONS:

- Before shooting, learn this gun's mechanical and handling characteristics; read and be thoroughly familiar with these safety instructions. If you do not fully understand any of the instructions in this manual, consult a competent firearms instructor through your local gun club or the NRA in Washington or you can write to us at Cimarron Firearms Co., Inc.
- Always point the gun in a safe direction, and handle it as though it were loaded. This is especially important when loading and unloading the gun, and when handing it to someone else. Never take someone's word that it is unloaded.
- Always check it yourself with your fingers off the trigger and the gun pointed in a safe direction.
- Always keep the safety on until you are ready to safely shoot at an intended target (see safety features).

Note: Safety devices on guns are extras and are not a substitute for your proper and safe handling practices.

- While at a shooting range, always carry the gun unloaded and open until preparing to shoot. Keep it pointing in a safe direction when loading, shooting and unloading.
- Never drink alcoholic beverages or take any drugs before or during shooting, as this not only constitutes criminal disregard for your safety and that of others, but will seriously impair your judgment and vision. Never use a gun while you are taking medication unless you have checked with your doctor to ensure your fitness to handle the gun safely.
- Always wear and encourage others near you to wear proper ear protection when shooting, especially on a range since the noise from your gun, and other guns close to you, could result in permanent hearing loss.
- Always wear protective shooting glasses to protect your eyes from injury by gun powder, gas, lubricant, dirt or metallic particles, carbon residue, sparks or other debris.
- Always check the barrel bore, chamber and action to ensure that they are perfectly clean and clear of obstructions. Clean a fouled gun immediately for correct and safe function.
- Do not smoke while handling, loading or shooting any ammunition.
- Always use only good condition, undamaged, clean, dry, original high quality, commercially manufactured ammunition of a reputable company which is appropriate for the gun's caliber. Ammunition which is too small can fall forward and become a barrel obstruction. Manufacturers design guns and ammunition within exacting engineering safety limits.
- When selecting a place to shoot, always be absolutely sure of your target and the area behind it before you touch the trigger, making sure there is an adequate backstop which will stop and contain bullets. A bullet can travel through or past your target up to 1 1/2 miles. If you have any doubt, do not shoot.
- Never shoot at flat or hard surfaces such as rock, or at water. A bullet may ricochet and travel in unpredictable directions to strike you, or an object you cannot see, causing injury death, or property damage.

6