

# *1873 SINGLE ACTION Revolver*

## **INSTRUCTION MANUAL**



### *Official Sponsor*



**ATTENTION: BEFORE REMOVING THE FIREARM FROM ITS  
PACKAGE READ & UNDERSTAND WARNINGS AND FULL  
INSTRUCTIONS AND PRECAUTIONS IN THIS OWNER'S MANUAL**

# *A must for modern cowboys*

## ***A historical note on the 1873 Single Action model and on historical design***

A revolver which reflects the most classic western tradition, the Chiappa 1873 SINGLE ACTION revolver will make a lot of modern cowboys happy. It is a faithful replica of the Colt 1873 Single Action, which is never missed in the most famous western films.

With its grip well distanced from the cylinder group, the shape of the hammer reminding of the main of a running horse, and the typical shark tail-shaped sight, the 1873 Single Action model cannot be missing in the collection of the modern cowboy.

The name “1873 Single Action” is an idea of our American importer, and perfectly evokes the spirit of this weapon. The word was born from the union of “Pinkerton” – the famous agency of investigators who often escorted stagecoaches loaded with gold, and “plinking”, an onomatopoeia which in US slang refers to a kind of shooting, with small calibres on metal targets.



Armi Sport proudly manufactures finely crafted replica firearms reproducing famous historical weapons. These firearms are manufactured using leading edge machinery and high quality modern materials. They are faithful reproductions of firearms originally designed in the nineteenth century; therefore, if you choose to own or use historical firearms you should be aware that, along the one hundred or more years past, there have been significant advances in firearms design and safety.

Armi Sport manufactures these guns not as state of the art firearms, but as historically significant firearms for the collector. It is vital that the user be familiar with his firearm and possible safety risks that may be present in the design. Most significantly, the user should realize that the designs of safeties - or even the presence of adequate safeties - vary significantly on historical designs and do not offer the protection against accidental discharge that modern firearms safeties achieve.

# INDEX

## INDEX

<i>Warnings</i>	4
<i>Safety rules</i>	5
<i>Product Range and technical data</i>	10
<i>Ammunition</i>	11
<i>Loading and unloading</i>	12
<i>Cleaning</i>	13
<i>Ordinary and extraordinary maintenance</i>	14
<i>Exploded views and components</i>	15
<i>Armi Sport/Chiappa Firearms Warranty</i>	17

# WARNINGS

*Armi Sport/ Chiappa Firearms is not responsible for damage to objects caused by misuse of the gun or for injuries to persons or animals, or in case of death, caused voluntarily or involuntarily by the gun user.*

*Armi Sport/ Chiappa Firearms is not responsible for injuries caused by poor maintenance, misuse of the gun, unauthorized or improper modifications.*

*Armi Sport/ Chiappa Firearms declines responsibility for the indirect consequences of any injuries and / or death of persons or animals, damage to objects caused by use of the gun or by primer explosion, by bullet's ricochet, or unsafe loading practices and / or procedure.*

*The gun you own is an accurate 19th century replica. Consequently its safety devices are limited to the technological knowledge of the period. Therefore the risks in using a gun like this are higher compared to a modern design gun.*

*The complete and full knowledge of your firearm may help you to avoid serious injuries due to lack of safety devices.*

*Read the entire manual and learn the proper use of the gun without live ammunition. It is important that you understand the proper use of this product. The life of the people close to you may depend on your safety.*

*If the manual is not clear, please contact the dealer where you bought the gun or call the distributor or the manufacturer by using the contact information provided within this manual.*

*All our guns are tested in the Armi Sport/ Chiappa Firearms facility. To guarantee the gun is safe, it is sent to the National Proof House of Gardone Val Trompia – BRESCIA – ITALY - for proof testing.*

*The Proof House tests the firearm with heavy loads then checks the barrel, chamber and headspace to make certain the firearm is safe for use with standard factory ammunition.*

*The National Proof House will put their markings on the gun, according to the Italian law, certifying the gun is qualified and can be sold.*

***THE COURT OF BRESCIA - ITALY, WILL SETTLE ALL DISPUTES.***

# SAFETY RULES

1. *Read the instructions carefully before use. Reading the manual and a careful examination of the gun are fundamental to avoid any kind of problem.*
2. *Be aware that you are handling a firearm; therefore your knowledge and behaviour may affect your life and those of the people close to you.*
3. *Guns and ammunitions must be kept in different places*
4. **ALWAYS** *keep guns and ammunitions out of reach of children.*
5. *Store the gun in a clean dry and airy place after use to avoid rust in mechanical parts that may cause serious problems in functioning after a period of inactivity.*
6. *The gun must **ALWAYS** be stored unloaded, **ALWAYS** check that the chamber is empty.*
7. *Keep away from open flame or heating sources.*
8. *Never leave a loaded gun unattended.*
9. *Never leave the weapon loaded and with a closed breech block, it could fall and cause injury and death. Always point the gun in a safe direction, and handle it as though it were loaded. This is especially important when loading and unloading the gun, and when handing it to someone else. Never take someone's word that it is unloaded. Always make sure the gun is unloaded before laying it down or handing it to someone else.*
10. *After use, clean and lubricate the inside of the barrel with appropriate oil. Avoid grease or oil build up that can cause excessive pressure and result in serious personal injuries. Before using the gun again, inspect the barrel and chamber to make certain that there are no obstructions in the bore. Remove any oil residue with rod and dry patch before shooting.*
11. *Accumulation of rust in the barrel can cause excessive pressures resulting in serious injury and may cause the explosion of the barrel. A rusted, pitted or eroded barrel should be replaced.*
12. *Wash hands thoroughly after shooting and handling firearms to remove any unwanted residues.*
13. *Being this firearm is a replica of original design, there is no modern safety. Pay great attention during transportation and use. Mechanical safety devices can fail. Developing intelligent, good safety habits is the best way to prevent accidents.*
14. *The only safety is the hammer half cock, read chapter on firearms use. **REMEMBER:** No mechanical safety device is infallible.*
15. **ALWAYS** *keep the gun unloaded when transporting it from home to the shooting areas. Carefully check that cartridge chamber is empty.*

16. *When you walk around with the gun in a shooting area, ALWAYS keep the muzzle pointed in a safe direction.*
17. *NEVER run with a loaded gun, don't cross any obstacle (fences or water courses, etc.) or walk where there is any possibility of slipping or falling without having your firearm unloaded and in safety position.*
18. *Do not smoke while handling, loading or shooting any ammunition, especially black powder. Keep black powder in a closed container at all times, reclosing the container after each and every use.*
19. *Never drink alcoholic beverages or take any drugs before or during shooting, as this not only constitutes criminal disregard for your safety and that of others, but will seriously impair your judgment and vision. Never use a gun while you are taking medication unless you have checked with your doctor to ensure your fitness to handle the gun safely.*
20. *Never rest your finger on the trigger until the very moment you wish to shoot. Always keep the safety on until you are ready to safely shoot at an intended target (see safety features).  
Note: Safety devices on guns are extras and are not a substitute for your proper and safe handling practices.*
21. *Always wear and encourage others near you to wear proper ear protection when shooting, especially on a range since the noise from your gun, and other guns close to you, could result in permanent hearing loss.*
22. *Always wear protective shooting glasses to protect your eyes from injury by gun powder, gas, lubricant, dirt or metallic particles, carbon residue, sparks or other debris.*
23. *Use exclusively factory loaded ammunition of the caliber specified on the firearm barrel. Use of different calibers may cause serious personal injuries to you and to people close to you.*
24. *Before shooting ALWAYS check to ensure that the barrel is free of obstructions.*
25. *When selecting a place to shoot, always be absolutely sure of your target and the area behind it before you touch the trigger, making sure there is an adequate backstop which will stop and contain bullets. A bullet can travel through or past your target up to 1 1/2 miles. If you have any doubt, do not shoot.*
26. *Keep all bystanders behind you, standing beside a shooter is not a safe position. Make sure all other shooters and bystanders are well away from the ejection port.*
27. *Never shoot against a solid surface or in a pool of water, the projectiles could ricochet and shoot toward any direction.*
28. *Never force a jammed action. It could bring to explosion of the round and consequent injury.*
29. *In case of misfire, manually extract the cartridge from the chamber. If firearm fails to fire when trigger is pulled, as a result of slow primer ignition (hangfire), keep muzzle pointed downrange for a minimum of 30 seconds. If the round does not fire, remove the magazine, clear the weapon and*

*examine the ejected, unfired cartridge. If the indent from the firing pin is off center, light or absent, take the pistol to a competent gunsmith. If the indent appears normal compared to other rounds, assume a faulty round, separate from other cartridges, reload and continue shooting.*

- 30. Do not attempt to re-use unexploded ammunitions.*
- 31. NEVER modify any parts of your gun. Any alteration may cause serious personal injury and voids the warranty.*
- 32. Only a qualified gunsmith may service the gun for repair or serious maintenance.*

Armi Sport/ Chiappa Firearms declines any responsibility for misuse of the firearm.

In case of alteration of the firearm, Armi Sport/ Chiappa Firearms declines any civil and penal responsibility and will not refund any damage.

**The user is responsible for injuries or damages caused to him or to other persons.**

COMPLETE KNOWLEDGE OF YOUR FIREARM CAN MAKE THE DIFFERENCE.

*Each firearm is duly submitted to strong testing, to grant the highest security of the product, by the Italian Proof House in Gardone Valtrompia.*

**QUALITY INSPECTION: Every firearm is thoroughly inspected for function and cosmetic blemish prior to shipment**

## SAFETY DEVICE





## IDENTIFYING MARKINGS:

*Every gun we produce has a serial number that is marked on the barrel. Close to the serial number you will also find the National Proof House markings. On the barrel there is also a marking with our company name, gun caliber, Made in Italy. For rifles destined to some countries, a marking in the barrel will also indicate the name of the importer.*

**These markings must not be removed from the firearm for any reason.**

Armi Sport / Chiappa Firearms is proud to offer the following

## 1873 SINGLE ACTION REVOLVER RANGE:

MODEL	Barrel length		Total length		No. of grooves and twist rate	Weight		No. of shots	Finish	
	IN	CM	IN	CM		Kg	Lbs			
340.049	4" 3/4	12	13"	33	6	1x406	1	2,2	6	Black/plastic grips
340.074	4" 3/4	12	13"	33	6	1x406	1	2,2	6	TARGET VERSION Black/wooden grips
340.089	4" 3/4	12	13"	33	6	1x406	1	2,2	6	Antique/plastic grips
340.090	5" 1/2	14	11"1/2	29	6	1x406	1	2,3	6	Black/plastic grips
340.091	7" 3/4	20	13"3/4	35	6	1x406	1	2,4	6	Black/plastic grips

**SIGHTS AND SIGHTING:** Standard 1873 Single Action Models do not have adjustable sights. Most will shoot center but some may shoot slightly left or right of dead center. We do not guarantee them to shoot dead center for each individuals shooting style. Do not attempt to correct sighting by bending the front sight.

## INSTRUCTIONS FOR USE

### Ammunition

THE NAME 1873 SINGLE ACTION IS DESCRIPTIVE OF THE TYPE OF SHOOTING FOR WHICH THIS MODEL IS DESIGNED AND THAT IS PLINKING, GENERAL SHOOTING OR HUNTING. THIS FIREARM IS NOT DESIGNED FOR TIMED SHOOTING COMPETITION OR FAST DRAW AND WE DO NOT WARRANT THE GUN TO PERFORM TO RIGOROUS COMPETITION USE.

The 1873 SINGLE ACTION revolvers chambered for 22 long rifle are intended to be used with any standard make of 22 long rifle, long or short ammunition in either regular, high velocity or hyper-

velocity loading. Two cylinders are furnished with some 1873 SINGLE ACTION revolvers. The standard cylinder is chambered for 22 Long Rifle cartridge (22 Short and 22 Long cartridges can also be fired in the Long Rifle cylinder). The cylinder chambered for the 22 WMR cartridge (Winchester Magnum Rimfire) is marked refer to image. WARNING: Fire only 22 WMR cartridges in the MAGNUM cylinder. Do not fire 22 Short, Long or Long Rifle cartridges in the MAGNUM cylinder. Such cartridges will burst and can cause injury to the shooter and persons nearby.



USE 22 MAGNUM INSTEAD OF 22 WMR. 22WMR MAY BE CONFUSED WITH EARLY 22 MAGNUMS CALLED 22WRM OR SOME SUCH NAME. THERE WAS A 22 MAGNUM MADE BY WINCHESTER THAT SHOULD NOT BE FIRED IN A 22 MAGNUM.

#### **NOTICE**

WE SPECIFICALLY DISCLAIM RESPONSIBILITY FOR ANY DAMAGE OR INJURY WHATSOEVER OCCURRING IN CONNECTION WITH, OR AS THE RESULT OF, THE USE IN "1873 SINGLE ACTION" REVOLVERS OF FAULTY, OR NONSTANDARD, OR "REMANUFACTURED" OR HANDLOADED (RELOADED) AMMUNITION, OR OF CARTRIDGES OTHER THAN THOSE FOR WHICH THE FIREARM WAS ORIGINALLY CHAMBERED.

Death, serious injury, and damage can result from the use of wrong ammunition; bore obstructions, powder overloads, or incorrect cartridge components.

#### **SPECIAL WARNING FOR RIMFIRE AMMUNITION**

When loading the cylinder, be sure to push each cartridge fully into the chamber to avoid interference of the cartridge rim with either the frame of the revolver or the loading gate. Failure to fully seat the cartridge and any attempt to force the cylinder to rotate or to force the loading gate closed could lead to possible detonation of the cartridge and injury to the shooter. NEVER DRY FIRE your revolver. If you do this you will ruin your cylinder and the ammunition will not PROPERLY SEAT IN THE chamber.

- Use only commercially manufactured ammunition which pressure cannot be higher than the ones stated by S.A.A.M.I. or C.I.P.
- Your gun has been designed for ammunition of a specific caliber – do not alter the barrel, chamber, caliber for which your gun was designed.
- Be sure you never mix ammunition.

- Use only ammunition specifically recommended for your firearm (Proper Ammunition specified on barrel and cylinder).
- The use of reloaded Ammunition voids the warranty.

**CARRYING:** Single action revolvers, should always be carried with the hammer down on an empty chamber to prevent accidental discharges caused by a blow to the hammer.

## Loading & unloading

1. Do not load the revolver until you are ready to use it.
2. Point the revolver in a safe direction
3. Pull the hammer to the second notch "Half-Cock" position, this permits the cylinder to rotate freely.
4. Open the loading gate to expose the chambers.
3. Turn cylinder clockwise, by hand, and insert cartridges in chambers until the cylinder is loaded and close the loading gate.

**WARNING:** Do not carry this revolver with a live round chambered under the hammer and firing pin. Keeping an empty chamber under the hammer is good insurance against accidental firing.

4. Align an empty chamber so that the hammer will rest on a empty chamber. Pull the hammer to the rear and carefully ease the hammer forward while pulling the trigger, allowing the hammer to rest over the empty chamber. The revolver is now in its normal carrying condition – hammer and trigger fully forward, with hammer on an empty chamber.

6. Cocking – To fire the revolver, the hammer must first be manually cocked. When cocking the hammer, have a firm hold on the grip with the shooting hand, and **DO NOT TOUCH THE TRIGGER WHILE COCKING THE HAMMER. TOUCH THE TRIGGER ONLY WHEN YOU ARE READY TO FIRE.**

With the fore portion of your thumb firmly on the hammer spur, draw the hammer fully to the rear until it stops. Then permit the hammer to move forward (it will only move slightly) until the trigger engages in the hammer at full cock.

7. Firing – Once the hammer has been cocked, a light pressure on the trigger will disengage the trigger from the hammer. The hammer will fall forward striking the firing pin and the revolver will fire. **NEVER FIRE UNTIL YOUR TARGET IS ACQUIRED AND YOU ARE CERTAIN OF DOWN RANGE SAFETY.**
8. After firing, the hammer will remain down. To fire subsequent shots, fully release the trigger and repeat steps 6 & 7 above for each shot.

**Unloading:** Draw the hammer to its half-cock position and open the loading gate on the right rear part of the frame. Push out each cartridge or empty case with the ejector rod located under the barrel. Operate the ejector rod in each chamber to its full length to assure full length case ejection. Close the loading gate after you are sure that all six chambers in your revolver are empty.

# Cleaning

Attention: a careful and scrupulous ordinary clearing of the firearms is essential to guarantee its safety and long life

- Every time you use your gun it is advised to clean it in order to remove all corroding agents (humidity, powder or lead residues etc.) which can in time alter a few parts.
- In order to perform a standard clearing, it is sufficient to utilize a good solvent, cleaning oil, a little brush.
- For a deeper cleaning, please turn to your local gunsmith

Check first to make sure your revolver is empty. Then remove the cylinder using the following steps:

1. Open the loading gate.
2. Put the hammer in its half-cock notch.
3. Depress the base pin catch. This is the spring loaded plunger which is located on the left front side of the frame. Keep it depressed.
4. Slide the base pin all the way out. The base pin is the pin which the cylinder revolves on. It should always be clean and lubricated.
5. Remove cylinder toward the loading gate taking special care not to loose or misplace the loose fitting bushing located toward the front of the cylinder. (Note: See image below for the proper placement of the bushing.) The cylinder is made to fit your revolver precisely and can be removed and replaced easily, but carefully. It is a close fit, so don't force it to move in any direction. To reassemble, simply reverse the steps used in removal, with the cylinder bushing conical opening facing the back of the cylinder. When you reassemble the base pin, make sure the base pin catch snaps back to its regular position. You can test this by making sure the plunger is free to move when you depress it and it returns under its own spring pressure. Use a aluminum or brass cleaning rod (not steel), a brass bristle brush, and patches appropriate to your revolver's caliber to clean it. Use a good quality cleaning solution to scrub the bore and each cylinder. While scrubbing the bore, always brush all the way through the bore; never try to reverse directions while the brush is actually in the barrel or chamber. After scrubbing, run clean patches through the bore and chambers until they come out clean. Then completely, but lightly, oil the entire revolver. Use your revolver carefully and safely. Help us to help you keep and protect your right to gun ownership.



CORRECT BUSHING  
POSITION

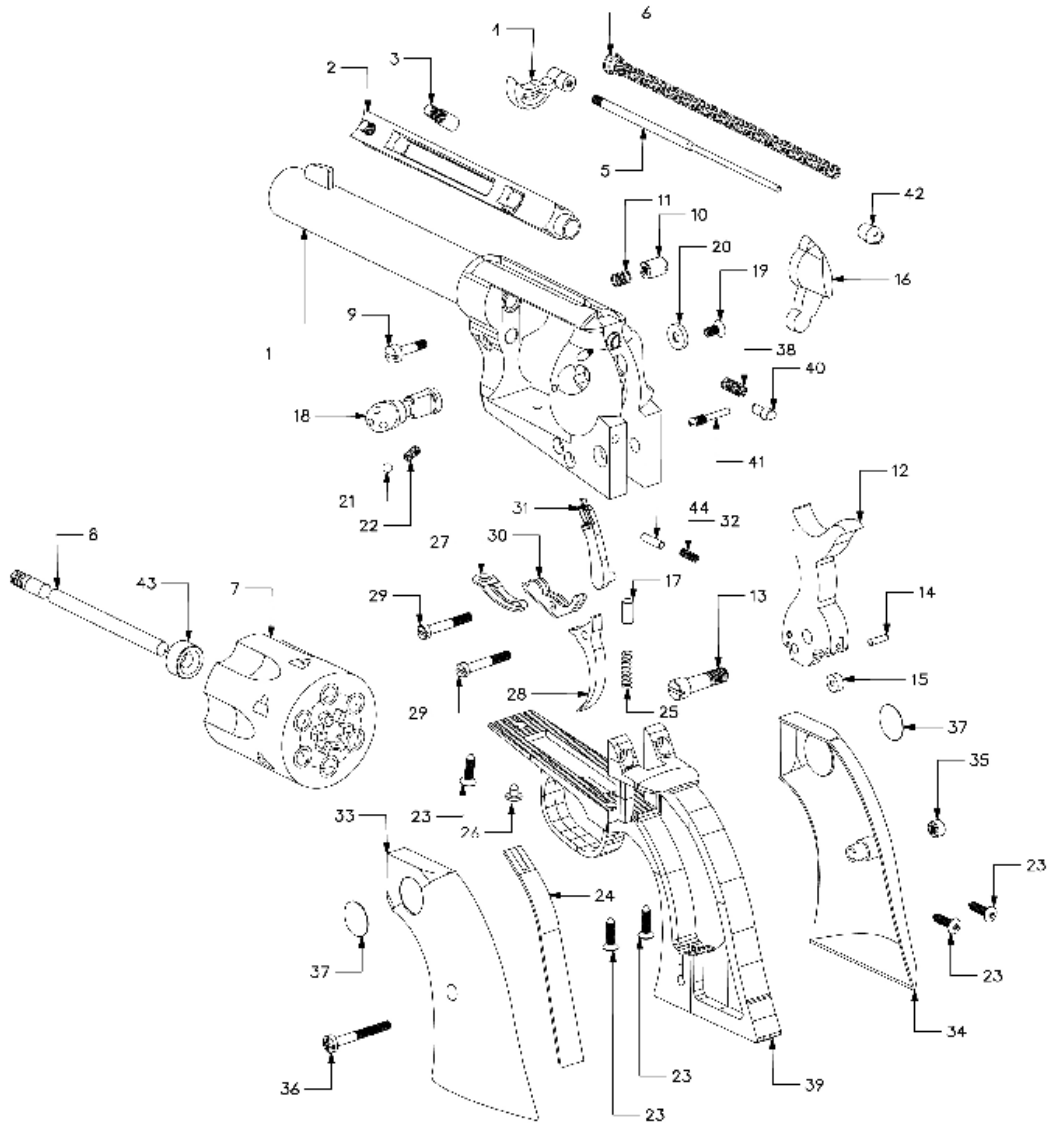


INCORRECT BUSHING  
POSITION

# Ordinary and extraordinary maintenance

- Before any sort of maintenance, make sure the firearm is unloaded.
- By “ordinary maintenance” we refer to measures the user should take to keep the gun in good working conditions.
- An “Extraordinary maintenance” implies the replacement of broken parts and therefore disassembling the gun. In this case only authorized personnel or a qualified gunsmith should operate.
  - Also a long period of heavy use or inactivity requires an extraordinary maintenance; your gun should be taken to a qualified gunsmith to have the action disassembled for professional cleaning and lubrication.
- Your gunsmith will advise the best lubricant for the good maintenance of your revolver.
- Do not leave oil residues when cleaning and lubricating your firearm.
- Make sure that the mechanism of the weapon is easy; if it starts to stiffen, or if corrosion is starting on some essential parts, you should bring your gun to competent, professional personnel.
  - Do not use pure silicon or lanolin.
  - In the following pages you will find exploded views with a list of all parts
  - When ordering parts, it’s important to specify date of purchase, serial number, model, caliber and item reference of the part/s needed.
  - If the gun has a problem that you cannot fix, DO NOT FIRE it but send it to an authorized center for a check-up. If you try to fix it personally, you may put in serious danger yourself and the people near you.
  - Always pay great attention and handle the gun very carefully, in order to avoid terrible accidents which may change your life and that of others.

# EXPLODED VIEW AND PARTS LIST



No.	Code	Descrizione	Description
1	700.116	Frame S.A Plinkerton	Fusto Rev.S.A. Singola Azione 1873 Nera
2	740.163	Extractor Tube	Tubo espuls.Rev.S.A.
3	730.344	Extractor Screw	Vite espulsore Rev. S.A.
4	740.164	Extractor Button	Pulsante espul.Rev.S.A.
5	730.345	Extractor Rod	Perno espulsore Rev. S.A.
6	721.084	Extractor Spring	Molla spec.espulsore Rev.S.A.
7	740.257	Cylinder	Tamb.Rev.S.A.c.22 LR
8	730.346	Cylinder Rod	Asta tamburo Rev.S.A.
9	730.347	Cylinder Rod Spring Scr	Vite asta tamb.Rev.S.A.
10	730.348	Cylinder Rod Spring Nut	Dado vite asta tamb.Rev.S.A.
11	720.050	Cylinder Rod Spring	Molla a spirale 4.1x5.5x0.4
12	740.258	Hammer	Cane Rev. S.A. c.22 LR
13	730.349	Hammer Screw	Vite cane Rev.S.A.
14	130.007	Pin 2x7,8	Vite T.C. taglio M4x6
15	730.350	Hammer Pin	Rullo cane Rev.S.A.
16	740.166	Loading gate	Sportello caricam. Rev. S.A.
17	130.025	Pin 4x8	Rullino d.4x8
18	730.763	Safety System	Sicura SA Singola Azione 1873
19	100.010	Safety Screw	Vite brug.M3x6 testa svasata
20	730.764	Safety Stopper	Tappo Sicura SA Singola Azione 1873
21	130.008	Safety Detent Ball	Sfera d.3
22	720.001	Safety Spring	Molla spir. 2,9x8,3x0,45
23	120.000	Frame Screw	Vite auto. 2,9x9,5 TGS+grezza
24	721.085	Hammer Spring	Molla spec.lamina cane Rev.S.A
25	720.051	Spring	Molla a spirale 3.8x12.5x0.8
26	120.014	Trigger Spring Screw	Vite auto.2,9x6,5TCpunta croce
27	721.086	Trigger Spring	Molla spec.grilletto Rev.S.A.
28	740.259	Trigger	Grilletto Rev. S.A 22LR
29	730.351	Trigger Screw	Vite grilletto Rev.S.A.
30	760.068	Cylinder stop	Leva arresto tamb.Rev-S.A.
31	740.169	Pawl (Cylinder)	Elevatore Rev. S.A.
32	721.087	Pawl Spring (Cylinder)	Molla spec.elevatore Rev.S.A.
33	750.090	Left Grip	Guancina sx Rev.S.A. 22LR
34	750.091	Right Grip	Guancina dx Rev.S.A.
35	730.322	Nut	Rosetta vite guanc.Sing.Action
36	103.017	Grip Screw	Vite T.C. bomb. croce M3x25
37	207.036	Medallion (Grip)	Stemma oro ins.guancette
38	720.050	Firing Pin Spring	Molla spir. 4x9x0.4
39	740.167	Backstrap	Impugnat.Rev.S.A. nera
40	730.765	Firing Pin	Percussore Sicura SA Plinkerto
41	730.766	Firing Pin Bushing	Vite ferma percussore SA Plink
	760.118	Safety key	Chiavetta Sicura SA NERA



# GUARANTEE CONDITIONS

Armi Sport guarantees that our products are scrupulously checked against defects in materials, workmanship and aesthetical and functioning problems.

In case you find a defect in one of our products, you should immediately contact the DEALER/SHOP/GUNSMITH where you have bought your gun. The seller will indicate the conditions for the repair, which will be either made directly by them or through our assistance.

**ATTENTION: end users are not allowed to ship any gun directly to Armi Sport for repair, either under guarantee or against payment. Transportation of weapons is strictly regulated and the documents which are required can solely be issued by companies with specific authorization.**

1. Armi Sport will warrant for structural or project defects without any time limit.
2. Armi Sport guarantees, for a year after the purchase date, the free substitution of parts for defects which have been found out also during use: wear of parts which shouldn't be subject to wear, or excessive wear of parts subject to wear. The customer will have to give evidence of the purchase date with a bill or other valid proof.
3. In case the defect under cover of guarantee is not repairable, Armi Sport will provide for a free substitution of the weapon.

ARMI SPORT RESERVES THE INSINDACABLE FACULTY OF DEFINING THE TYPE OF DEFECT OF THE WEAPON, AND THEREFORE TO STATE WHETHER THE DEFECT IS COVERED BY GUARANTEE –Armi Sport's decision will be fair but final.

Armi Sport will be allowed a timing of 60 days for repair under guarantee, and 90 days for free substitution.

We strongly recommend that you keep the receipt  
or proof of purchase for any Armi Sport product

## THE GUARANTEE IS VOID IN CASE:

- Inadequate ammunition has been used (any ammunition but those commonly on sale, reloaded ammunition, different from caliber and specification indicated on the gun barrel)
- The gun failed to be provided proper maintenance and cleaning
- The gun has been modified without our prior consent
- Unauthorized, inadequate or incorrect repairs have been carried out
- Parts subject to wear and corrosion
- Damage (improper use of the gun by the user)
- Expiry of the guarantee

In the above cases the repair, if carried out, will be charged to the customer

**The guarantee does not cover parts subject to wear and corrosion**

In case non original spare parts are used, the guarantee or any service contract with Armi Sport will be void.

**ATTENTION: delivery expenses to and from the service center are not covered by the guarantee and will be charged to the customer.**

In case, for any valid reason, you do not have the possibility to obtain repair under guarantee at the shop where you bought the gun, you may contact us directly; we will indicate a local dealer to support you with the repair file:

**e-mail: [info@armichiappa.com](mailto:info@armichiappa.com) - Phone: +39/030/9749065**  
**USA: e-mail: [info@chiappafirearms.com](mailto:info@chiappafirearms.com) - Phone: 937-835-5000**

**Should Armi Sport become aware of a defect of the rifle during the guarantee period, the defective part will be substituted free of charge.**

**This instruction manual must always follow the firearm, also in case the owner should change**

Procedure for the usage of the guarantee

BEFORE shipping the weapon back for repair, the customer should contact the gunshop where the product was bought. The customer should supply proper information on the defect, and the relevant file will then be started.

The gun shop will be given an "NDR" (Repair Number). The weapon will have to be shipped back to the gun shop in its original packing, with a copy of the purchase date, the Guarantee Form (attached) duly filed with indication of the NDR number, according to the instructions of the dealer.

**WARNING: the returned gun must be protected with an adequate packaging; any damages occurred during transportation and handling will be the customer's responsibility**



# **Request form**

## **REPAIR UNDER GUARANTEE**

NdR NDR : _____
-----------------

Please write in the above box the Repair Number you were given by the gun shop

### **1. Customer data:**

- Name: \_\_\_\_\_
- Address : \_\_\_\_\_
- Town : \_\_\_\_\_
- ZIP Code : \_\_\_\_\_
- Phone : \_\_\_\_\_ Available from \_\_\_\_ to \_\_\_\_
- Fax : \_\_\_\_\_

### **2. Product information:**

- Model : \_\_\_\_\_
- Serial number : \_\_\_\_\_

### **3. Gun Shop - dealer:**

- Purchase date : \_\_\_\_\_
- Dealer name : \_\_\_\_\_
- Dealer address : \_\_\_\_\_

### **4. Description of defect:**

---

---

---

---

Documents to attach: Proof of the purchase date



**Armi Sport**

Armi Sport  
di Chiappa Silvia & C Snc  
Via Milano N°2 Azzano Mella (BS)  
Tel. 030 9749065 Fax 030 9749232  
[www.armichiappa.com](http://www.armichiappa.com)  
email: [info@armisport.com](mailto:info@armisport.com)



Kimar Srl  
Via Milano N°2 Azzano Mella (BS)  
Tel. 030 9749065 Fax 030 9749232  
[www.armichiappa.com](http://www.armichiappa.com)  
email: [info@kimar.com](mailto:info@kimar.com)

**CHIAPPA**  
firearms

Chiappa Firearms, Ltd.  
6785 W. Third Street  
Dayton, OH 45427 USA  
Tel. 937-835-5000  
[www.chiappafirearms.com](http://www.chiappafirearms.com)  
email: [info@chiappafirearms.com](mailto:info@chiappafirearms.com)