

Charles Daly®

INSTRUCTION MANUAL FOR PUMP SHOTGUNS

**READ THE INSTRUCTIONS AND
WARNINGS IN THIS MANUAL CAREFULLY
BEFORE USING THIS FIREARM**

FIREARMS SAFETY

At Charles Daly, we believe that safe firearms handling is the most important consideration of anyone who uses firearms and ammunition. Please take a few minutes to thoroughly read and understand this instruction manual, the SAAMI "Firearms Safety Depends on You" pamphlet and the NSSF publication "Firearms Responsibility in the Home", all included with this shotgun.



You should completely understand this manual before you practice loading, unloading and firing with live ammunition.

Remember, firearms safety does depend on you!

CAUTION

Take note of the following warnings on gun handling before attempting to use your shotgun:

- ★ Don't rely on your gun's safety. Treat every gun as if it were loaded and ready to fire.
- ★ Never cross a fence, climb a tree or jump a ditch with a loaded gun.
- ★ Never load or carry a loaded gun until you are ready to use it.
- ★ Watch your muzzle so the other fellow doesn't have to.
- ★ Keep guns locked. Keep guns and ammunition separately and in locked storage.
- ★ Don't shoot unless absolutely sure of your target and what is beyond it.
- ★ Know the range of your gun.
- ★ Always wear eye and ear protection when shooting.
- ★ Always be sure the barrel is clear of obstructions, and only carry ammunition specifically intended for the gun you are using.
- ★ Do not alter or modify your gun. Have gun checked regularly by a competent gunsmith.

DIRECTIONS FOR ASSEMBLY

1. Remove the barrel and stock/receiver assembly from the box.



2. Unscrew the forend nut from the front of the forend.



3. Move the forend slightly rearward to its locked closed position. The bolt should be in the position that is shown below.



4. Insert the barrel extension into the receiver, making sure that the barrel extension is sliding between the bolt and the top of the receiver. Continue pushing the barrel back into the receiver until the barrel extension is completely seated and flush with the front of the receiver.



5. Your shotgun is equipped with a plug that limits the number of cartridges that your magazine tube will hold to 2 shells.



6. Reattach the magazine cap, screwing it down as tightly as possible.



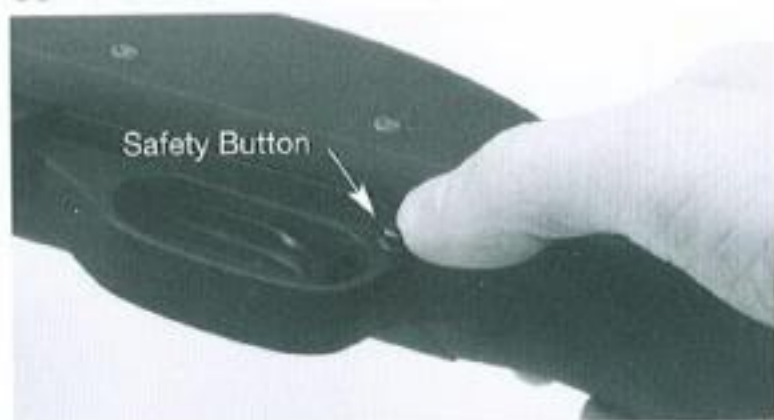
7. The shotgun is now fully assembled. Locate the action release tab located on the left side of the receiver just forward of the trigger guard. Depress this tab to unlock the action. You can now cycle the action by pulling the forend fully rearward and completely forward until the bolt/action is in its locked closed position. Do this a few times after your first assembly to insure your shotgun is properly assembled.



Your shotgun is now ready for loading, after you familiarize yourself with the operation of the manual trigger block safety.

SAFETY

1. Your shotgun is equipped with a manual trigger block safety button located in the trigger guard just behind the trigger. When the button is pushed from the left side of the receiver, protruding to the right side, the trigger is blocked and the shotgun is in its safe position. When the button is pushed from the right side of the receiver, protruding to the left side, you will see a red circle on the safety button indicating the shotgun is not safe, and it is ready to fire if the trigger is pulled.



2. It is highly recommended that the shotgun be kept with the safety on at all times, until you are ready to fire the gun. This will help insure that no accidental discharges will take place. Remember, if you can see the red stripe on the left side of the safety button, the shotgun is in an unsafe condition and can be fired with a pull of the trigger.

Now that you have assembled your shotgun and are familiar with the operation of the safety, you are ready to load the gun

LOADING

1. When loading, keep the safety on. Keep the muzzle pointed in a safe direction.

2. To load the magazine tube, turn the shotgun upside down. Make the sure action is locked closed. As you insert each cartridge you will hear a "click" that tells you the feed latch has closed behind the cartridge and that you can now load the next cartridge.



3. To load a cartridge into the chamber, depress the action release tab. Pull the forend rearward, a cartridge will come out of the magazine tube and the cartridge carrier will raise the cartridge aligning it with the chamber. Pull the forend forward to its locked position. The forward travel of the bolt will chamber the first round.



FIRING

1. When firing, keep the muzzle pointed at your target or game. Be aware of your surroundings and other people or structures within the range of your shotgun.
2. Push the manual trigger block safety to its fire position, with the red line showing on the left side of the receiver.
3. Pull the trigger. The shotgun will discharge the chambered round and unlock the action, thereby enabling you to pull the forend completely rearward, extracting and ejecting the fired cartridge, and placing into position the next cartridge from the magazine tube. Forward movement of the forend, at this time, will enable you to chamber the next cartridge. Continue moving the forend forward until the next cartridge is fully chambered and the bolt/action is locked closed.
4. You can continue firing using the above procedure until the magazine tube is empty and no cartridges remain in the chamber.
5. When you are finished firing push the manual trigger block safety to its safe position. You will no longer be able to see the red stripe on the side of the safety button. Visually check the chamber and magazine tube to insure the firearm is unloaded.

UNLOADING

1. Before unloading, be sure the safety is in the safe position. Never allow your fingers or another object to come in contact with the trigger during unloading.
2. Depress the action release tab.
3. Open and close the action repeatedly to chamber and then eject all cartridges that may be remaining in the magazine tube or the chamber.
4. Visually check to make sure no cartridges are remaining in the chamber or the magazine tube.
5. If you wish to unload the magazine tube without cycling the bolt repeatedly, turn the shotgun over, depress the lifter, insert your finger into the receiver well and depress the cartridge latch. This will allow cartridges remaining in the magazine tube to eject from the tube one at a time.
6. Repeat this procedure until the magazine tube is completely empty.



INTERCHANGEABLE CHOKE TUBES

If your shotgun has interchangeable choke tubes you have the ability to modify your choke pattern by installing interchangeable chokes of different constrictions. Charles Daly VR-MC pump models come with one interchangeable choke tube and a wrench to change the tubes. Additional tubes are available.



When changing choke tubes be absolutely certain your shotgun is unloaded and the safety is in the on position.

Your VR-MC barrel is threaded for your choke tubes. Insert the wrench into the slotted portion of the tubes and turn counterclockwise to remove them, or clockwise to install them.



WARNING: NEVER DISCHARGE YOUR GUN WITHOUT CHOKE TUBES INSTALLED.

DISASSEMBLY

1. Prior to disassembly of your shotgun, be absolutely certain that your shotgun is unloaded. As an added precaution, visually check the chamber and magazine tube for any cartridges. Put the safety in the on position. Pay particular attention to the placement of all parts for ease of reassembly.
2. Close the action. Remove the magazine cap.
3. Remove the barrel assembly from the shotgun, reversing the procedure used for assembly.
4. Pull the forend, action bar and bolt assembly out of the receiver and off of the magazine tube.



5. Remove the bolt assembly from the action bar by lifting it up at the rear of the bolt. Reassembly of the bolt to the action bar requires hooking the front of the bolt over the spring loaded plunger protruding from the face of the bolt carrier, then lowering the bolt to rest on the carrier.



No further disassembly of the bolt assembly or action bar/forend assembly are recommended for routine cleaning and maintenance.

The trigger group may be removed from the receiver for complete cleaning of the receiver. However, the trigger group assembly should not be disassembled further except by a competent gunsmith.

1. To remove the trigger group, first remove the two trigger group retaining pins by using a punch to drive the pins out of the receiver.

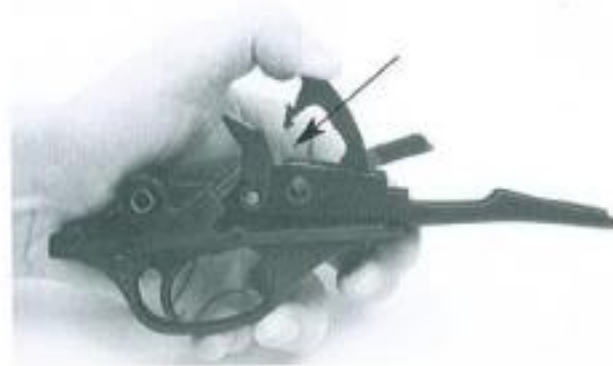


2. Once the retaining pins are removed, the entire trigger group can be removed by pulling down on the trigger guard.



DISASSEMBLY

Note: when reinstalling the trigger group the hammer must be cocked. To cock the hammer, pull down on the hammer with your thumb until it locks into place.



Your shotgun has now been completely disassembled. No further disassembly should be attempted beyond these procedures except by a competent gunsmith. The exploded view of the disassembled parts are shown below.



AMMUNITION

Each Charles Daly pump shotgun is clearly marked with the gauge and maximum length cartridge that may be used in that particular model.

Barrels marked **12 GA 3"** will shoot 12 gauge 2³/₄" and 3" shells. Barrels marked **20 GA 3"** will shoot 2³/₄" and 3" shells. Maxi-Mag models with barrels marked **12 GA 3¹/₂"** will handle all 12 gauge 3¹/₂" Magnum shells, 12 gauge 3" Magnum shells, 12 gauge 2³/₄" Magnum shells and all 12 gauge 2³/₄" hi-brass shells loaded with a minimum 1¹/₄ ounces of lead shot.

Do not use a cartridge that is longer than the maximum cartridge length that is stamped on the barrel.

The use of reloaded or substandard commercially produced ammunition will affect your warranty coverage and could result in severe injury to the shooter or others nearby. See the enclosed warranty registration card for any exclusions and limitations of our warranty.

WARNING

The accidental loading and discharge of shells of the wrong gauge in your gun can result in damage to your gun and possible injury to the shooter. To be safe, carry only the proper gauge ammunition with you when shooting.

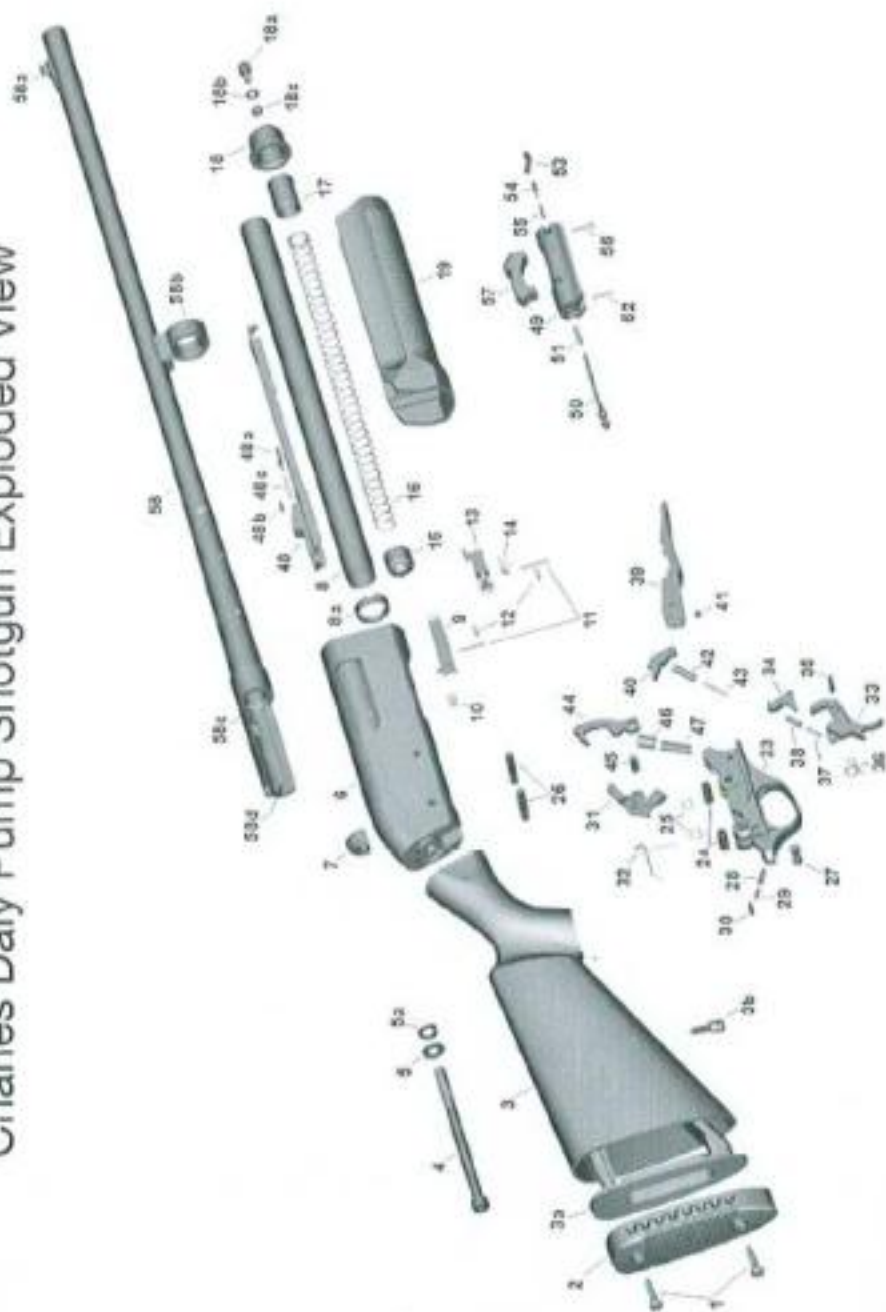
CLEANING

Periodically, clean the bore with proper cleaning equipment and oil all metal surfaces with a high quality gun oil. Never pour oil into the inside mechanisms.

If you will be storing your gun for a long period of time, apply gun grease to all the metal parts and store the shotgun in a dry place. Make sure the muzzle is not plugged with any heavy grease that would cause a barrel obstruction.

Charles Daly Pump-Action Shotgun Part List 12 GA 3" - 3¹/₂" - 20 GA 3"

STOCK ASSEMBLY PARTS	FOREND PARTS	BARREL ASSEMBLY PARTS
1. RECOIL PAD SCREW (X2)	19. FOREND	59. CARRIER DOG FOLLOWER SPRING
2. RECOIL PAD	48. ACTION BAR ASSEMBLY	44. HAMMER
3. STOCK ASSEMBLY	48.a- ACTION BAR FOLLOWER	45. HAMMER PIN
3.a- STOCK INNER FRAME	48.b- ACTION BAR DETENT PIN	46. HAMMER PLUNGER
3.b- STOCK SLING SWIVEL STUD	48.c- ACTION BAR SPRING	47. HAMMER SPRING
4. STOCK SCREW	TRIGGER ASSEMBLY PARTS	BOLT ASSEMBLY PARTS
5. STOCK SCREW WASHER	23. TRIGGER PLATE	48. BREECH BOLT
5.a- WASHER STOPPER	24. TRIGGER PLATE PIN BUSHING (X2)	50. FIRING PIN
RECEIVER ASSEMBLY PARTS	25. TRIGGER PLATE PIN DETENT SPRING (X2)	51. FIRING PIN SPRING
6. RECEIVER	26. TRIGGER PLATE PIN (X2)	52. FIRING PIN RETAINING PIN
7. RECEIVER STOCK PAD	27. SAFETY SWITCH	53. EXTRACTOR
8. MAGAZINE TUBE	28. SAFETY SWITCH DETENT PIN	54. EXTRACTOR PLUNGER
8.a- MAGAZINE NUT	29. SAFETY SWITCH SPRING	55. EXTRACTOR SPRING
9. FEED LATCH	30. SAFETY SWITCH SPRING RETAINING PIN	56. EXTRACTOR PIN
10. FEED LATCH SPRING	31. RELEASE LATCH	57. LOCKING BLOCK
11. FEED LATCH PIN (X2)	32. RELEASE LATCH SPRING	BARREL ASSEMBLY PARTS
12. FEED LATCH PIN DETENT SPRING (X2)	33. TRIGGER	58. BARREL ASSEMBLY (COMPLETE)
13. INTERCEPTOR LATCH	34. TRIGGER BEAR	58.a- FRONT SIGHT
14. INTERCEPTOR LATCH SPRING	35. TRIGGER PIN	58.b- BARREL COLLAR
15. MAGAZINE FOLLOWER	36. TRIGGER SPRING	58.c- BARREL REAR PART
16. MAGAZINE SPRING	37. TRIGGER BEAR DETENT SPRING	58.d- EJECTOR PIN
17. MAGAZINE SPRING RETAINER	38. TRIGGER BEAR DETENT PIN	
18. MAGAZINE CAP	39. CARRIER	
18.a- MAGAZINE CAP SLING SWIVEL STUD	40. CARRIER DOG	
18.b- MAGAZINE CAP SLING SWIVEL WASHER	41. CARRIER DOG PIN	
18.c- MAGAZINE CAP SLING SWIVEL NUT	42. CARRIER DOG FOLLOWER	



PARTS & SERVICE

To order parts, please call, write or email us for availability and pricing. To assist you better, please be prepared to provide your model, gauge, and serial number.

Send all parts correspondence to:

Charles Daly
 Attention: Parts Department
 P. O. Box 6625
 Harrisburg, PA 17112

or email:
service@charlesdaly.com

Tel: (717) 540-4645
 Fax: (717) 540-5801

To return firearms for warranty repairs, please pack your shotgun securely in the original packaging, if possible. Write us a note with the shotgun including a detailed description of the problem you are experiencing. Please include your proof of original retail purchase. Ship the shotgun to our service department via UPS, FedEx or insured US mail at:

Charles Daly
 Attention: Service Department
 5480 Linglestown Road
 P. O. Box 6625
 Harrisburg, PA 17112

Note: No C.O.D. shipments will be accepted.

Charles Daly®

The Shooting Sports Specialist™



www.charlesdaly.com

Discharging firearms in poorly ventilated areas, cleaning firearms, or handling ammunition may result in exposure to lead and other substances known to the State of California to cause birth defects, reproductive harm, and other serious physical injury. Have adequate ventilation at all times. Wash hands thoroughly after exposure.



P.O. Box 6625
5480 Linglestown Road
Harrisburg, PA 17112
Tel. (717) 540-8518 Fax. (717) 540-8567