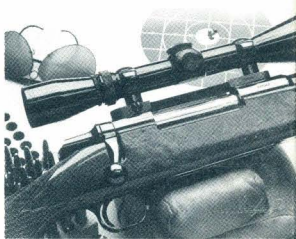


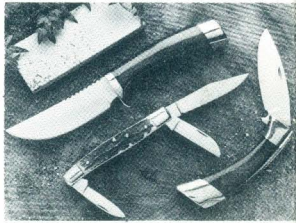
BROWNING SPORTING ARMS—World famous for handcrafted quality and dependability. Browning Sporting Arms include a complete line of shotguns, high power rifles, 22 caliber rifles and pistols in high power and small bore calibers.



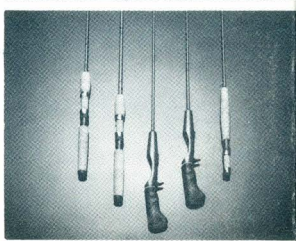
GUN CASES—Protect your new Browning in a choice of 3 flexible cases. They come with vinyl or canvas exteriors, soft interiors that won't scratch, and full length zippers for easy uncasing. Fitted luggage cases are available for all Browning shotguns and rifles. They're a must if your guns are subjected to a lot of abuse. They have a solid plywood frame with a Naugahyde® exterior and a nylon fleece interior.



SPORTSMAN'S KNIVES — Knives to dress big game, clean fish, and handle any camp chore. Fixed blade, folding hunters, pocket knives and a fillet knife with a fine cork handle to keep it afloat. All Browning knives are crafted from specially heat treated, high-carbon, stainless steel.



BROWNING FISHING TACKLE—You'll catch more fish whether you choose Browning Boron, Hi-Density Graphite, or Silaflex II Fiberglass. There's a rod to handle everything from ultra-light fresh-water to deep sea action. Browning is also the sole U.S. distributor of the famous line of Mitchell fishing reels.



Printed in U.S.A.

PP81035



operation and care of
BROWNING 92

VERY IMPORTANT—Save This Booklet. These instructions should be carefully noted.

New Gun Owner's Record

Browning 92

1

(Keep this record for future reference)

Browning Model _____

Serial Number _____

Caliber _____

Purchase Price _____

Purchased From _____

Date of Purchase _____

Please fill out and mail the Market Survey Card at the back of the booklet.

We are proud that you have chosen a Browning. In its manufacture, we have endeavored to incorporate the very finest in materials and craftsmanship, and with just reasonable care, this gun should provide you with many years of pleasure and dependable service. If, by chance you have any observations to make regarding its performance or appearance, we hope you will write us immediately.

We would also like to know more about you as a Browning owner and would be grateful if you could take but a moment to complete and return the market survey card found on the inside back cover.

Thank you.

BROWNING

Route #1, Morgan, Utah 84050

Distributed in Canada by Browning Canada Sports Ltd./Ltée,
5350 Ferrier Street, Montreal, Que. H4P 1L9



YOU ARE RESPONSIBLE FOR FIREARMS SAFETY

Please let us remind you that, as a gun owner, you accept a set of responsibilities of the most demanding nature. How seriously you carry out these responsibilities can be the difference between life and death. Mistakes made with guns are final and cannot be paid for with money or regret. **PLEASE READ AND UNDERSTAND THE PROPER HANDLING AND INSTRUCTION PROCEDURES OUTLINED IN THIS BOOKLET BEFORE USING YOUR NEW FIREARM.**

There is no excuse for careless or abusive handling of any firearm. At all times handle this rifle with intense respect for its force and power.

Please read and practice the following cautions:

CAUTION

- 1. ALWAYS KEEP THE MUZZLE OF YOUR RIFLE POINTED IN A SAFE DIRECTION** even though you are certain the rifle is unloaded. Never point your rifle at anything you do not intend to shoot. Be extremely alert and aware of all persons and property within the range of your ammunition.

2. **WHENEVER YOU PICK UP YOUR RIFLE, ALWAYS OPEN THE ACTION AND VISUALLY CHECK THE CHAMBER, RECEIVER AND MAGAZINE** to be certain they do not contain any ammunition.
3. **THIS RIFLE'S HALF COCK NOTCH IS SIMPLY A HAMMER POSITION THAT KEEPS THE HAMMER OFF THE FIRING PIN WHILE HUNTING OR DURING STORAGE.** You should never trust this hammer position to function as a "safety." A strong enough pull on the trigger can still cause the hammer to fall. And the fact that the half cock notch may frequently catch a hammer that slips from your thumb while cocking (**providing the trigger is not depressed**) should not be taken as an assurance it will be caught ALL the time.

No guarantee can be made that the half cock notch will not at some time prevent the hammer from striking the firing pin. Like any mechanical device it can sometimes fail; it can sometimes be jarred or inadvertently manipulated into an unsafe condition.

Safe gun handling does not stop with your rifle's half cock notch. It **starts** there. It is merely an aid to safe gun handling and is no

4. **ALWAYS KEEP YOUR RIFLE'S HAMMER IN THE HALF COCK POSITION AND YOUR FINGER OFF THE TRIGGER** even if you are certain the rifle is unloaded. While you should never rely on the half cock notch to function as a "safety," it is the preferred carrying position for the hammer on the Browning 92. This is because the Browning 92, like its nineteenth century counterpart has a full length firing pin. With a cartridge in the chamber and the hammer in the dropped or fired position, one end of the firing pin will be against the hammer and the other end will be resting against the primer of the cartridge. In this condition, a sudden jar to either hammer or rifle could cause a discharge.
5. **ALWAYS UNLOAD YOUR RIFLE WHEN NOT IN USE.** Your responsibilities do not end when your rifle is unattended. Store your rifle and ammunition separately—beyond the reach of children. Take all safeguards to insure your gun does not become available to untrained, inexperienced or unwelcome hands.

6. **BEWARE OF BARREL OBSTRUCTIONS** for the safety of both your rifle and yourself. Before you load your rifle, open the action, **BE SURE NO LIVE ROUND IS IN THE CHAMBER OR MAGAZINE**—then glance through the barrel to be sure it is clear of any obstruction. Be careful how you carry your rifle. Do not permit the muzzle to dip into mud, snow or water. Do not thrust your barrel through a thicket with the possibility of ramming a twig into the bore. An infinite variety of objects may inadvertently lodge in a barrel. It takes only a small obstruction to dangerously increase pressures.
Before the first firing of your rifle, clean the bore with a cleaning rod and patch. Wipe away any anti-rust compounds in the action-chamber areas.
7. **DO NOT SNAP THE HAMMER ON AN EMPTY CHAMBER—THE CHAMBER MAY NOT BE EMPTY!** Treat every gun with the respect due a loaded gun—even though you are certain the gun is unloaded.
8. **WHENEVER YOU HAND YOUR RIFLE TO ANOTHER PERSON ALWAYS OPEN THE ACTION.** Whenever you accept a gun from another person, open the action if it isn't

- already open, and inspect the chamber and magazine to be sure all live rounds are cleared.
9. **BE SURE OF YOUR TARGET.** Be sure no persons, livestock, buildings or other objects are behind or near your target. Be absolutely sure of your target particularly during low light periods.
10. **BE SURE OF YOUR BACKSTOP.** Know the range of your ammunition and be certain there is no chance of damage or accident. Never shoot at water or hard objects.
11. **ALWAYS UNLOAD ANY GUN'S CHAMBER AND MAGAZINE BEFORE CROSSING A FENCE, CLIMBING A TREE, JUMPING A DITCH** or negotiating other obstacles. Never lean a loaded gun against a fence, tree, car or other similar object.
12. **FOR EYE AND EAR PROTECTION** we recommend that you always wear shooting glasses and hearing protection when shooting.
13. **AMMUNITION**—Your rifle must be used only with cartridges of the correct caliber as inscribed on the side of the barrel. The barrel and action of this rifle have been made with large safety margins over the pressures developed by established commercial loads.

Nevertheless, Browning, can assume no responsibility for incidents which occur through use of cartridges of non-standard dimension or those developing pressures in excess of SAAMI (Sporting Arms and Ammunition Manufacturers' Institute) established standards.

There are two types of 44 Mag. ammunition commercially available. One loading is designed to be used in handguns and the other in rifles. Apart from a faster burning propellant and a bullet which is designed to perform more efficiently at the lower handgun velocities, the handgun load may also have a primer that is more sensitive than the rifle load. This is to insure reliable ignition in handguns which normally have lower energy firing systems. Rifle loadings have slower burning propellants and bullets designed for better performance at rifle velocities.

As long as the ammunition you obtain is manufactured in accordance with SAAMI recommended standards, either load is acceptable for use with your Browning 92.

Because your Browning 92 has a tubular magazine, particular attention must be paid

to the configuration of the bullet jacket and **USE ONLY SOFT POINT BULLETS WITH A BROAD, FLAT NOSE. ANY OTHER MAY RESULT IN A SPONTANEOUS MAGAZINE EXPLOSION.** This happens when the forces of recoil push the cartridges in the magazine together with enough force that a sharp pointed bullet indents the primer of the cartridge in front of it. Since the magazine tube is not strong enough to contain the subsequent explosion, the result is usually a severely damaged rifle and possible injury to the shooter.

14. **IF YOUR RIFLE FAILS TO FIRE DUE TO A MALFUNCTION OF EITHER RIFLE OR AMMUNITION** keep the muzzle pointed in a safe direction and hold this position for a minimum of 30 seconds. Carefully open the action and remove the cartridge. If the primer is indented, it should be disposed of in a way that can not cause harm. If the primer is not indented, your rifle should be examined by a qualified gunsmith and the cause of the malfunction should be corrected before further use.
15. **BE DEFENSIVE. BE ON GUARD AGAINST UNSAFE GUN HANDLING AROUND YOURSELF AND OTHERS.** Don't be timid when

it comes to gun safety. If you observe other shooters violating the above safety precautions, politely suggest safer handling practices.

16. **EDUCATE AND SUPERVISE.** Stress firearms safety to all members of your family, especially to children and non-shooters. Closely supervise newcomers to the shooting sports. Encourage enrollment in hunting-shooting safety courses.

BROWNING® NOMENCLATURE

In conventional gun terminology the position and movement of gun parts are described as they occur with the gun horizontal and in normal firing position; i.e., the muzzle is forward or front; the butt stock is rearward or rear; the trigger is downward or underneath; the sights are upward or on top. For general nomenclature refer to Figure 1.

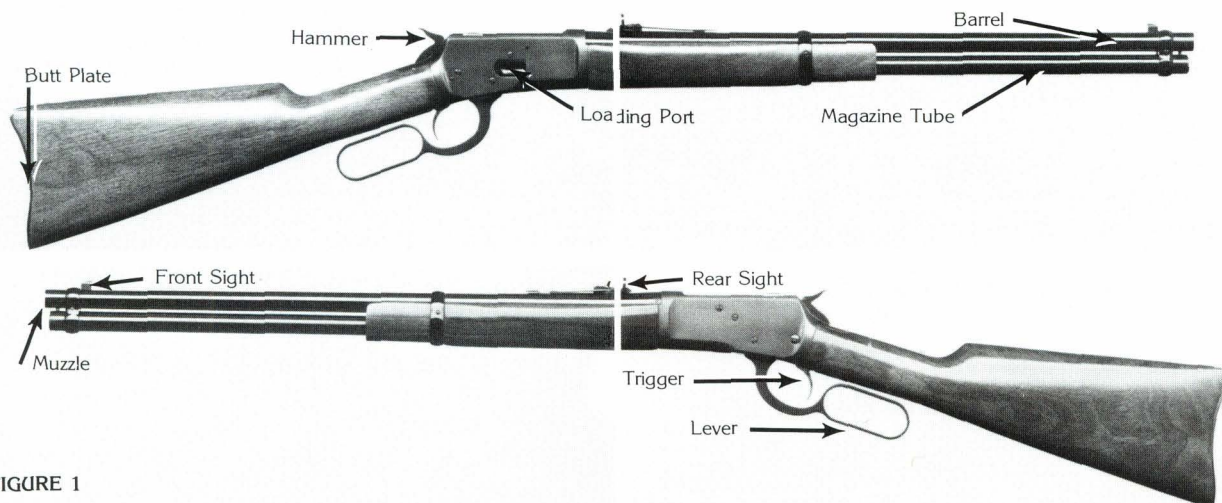


FIGURE 1

SERIAL NUMBER

The serial number of your rifle can be found on the right side of the receiver.

OPERATION

1. **CLEAN THE ANTI-RUST COMPOUND** from the barrel and the inside of the receiver with a clean rag and light gun oil such as Browning Gun Oil or Browning Liquid Gunsmith.
2. **THROUGHOUT THE LOADING PROCESS MAKE CERTAIN THE RIFLE IS POINTED IN A SAFE DIRECTION.** For maximum safety, you should never chamber a cartridge until a shot is imminent.
3. **LOADING IS ACCOMPLISHED BY INSERTING THE CARTRIDGES NOSE FIRST THROUGH THE LOADING PORT** on the right side of the receiver (see fig. 2). The capacity of the magazine is 11 rounds. Another cartridge may be placed in the chamber to provide a total capacity of 12 rounds.

In the event you wish to carry all 12 rounds, you must first insert 11 rounds into the magazine tube and then cycle the action to chamber a round. Immediately place the hammer in the half cock position as described in the

“safety” section of this manual. The twelfth round can now be inserted into the magazine tube as before.

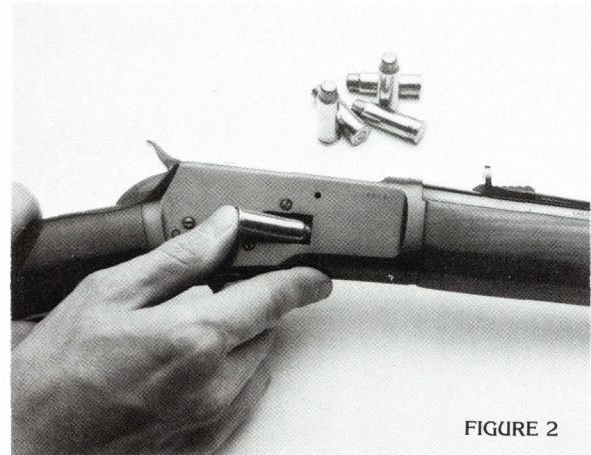
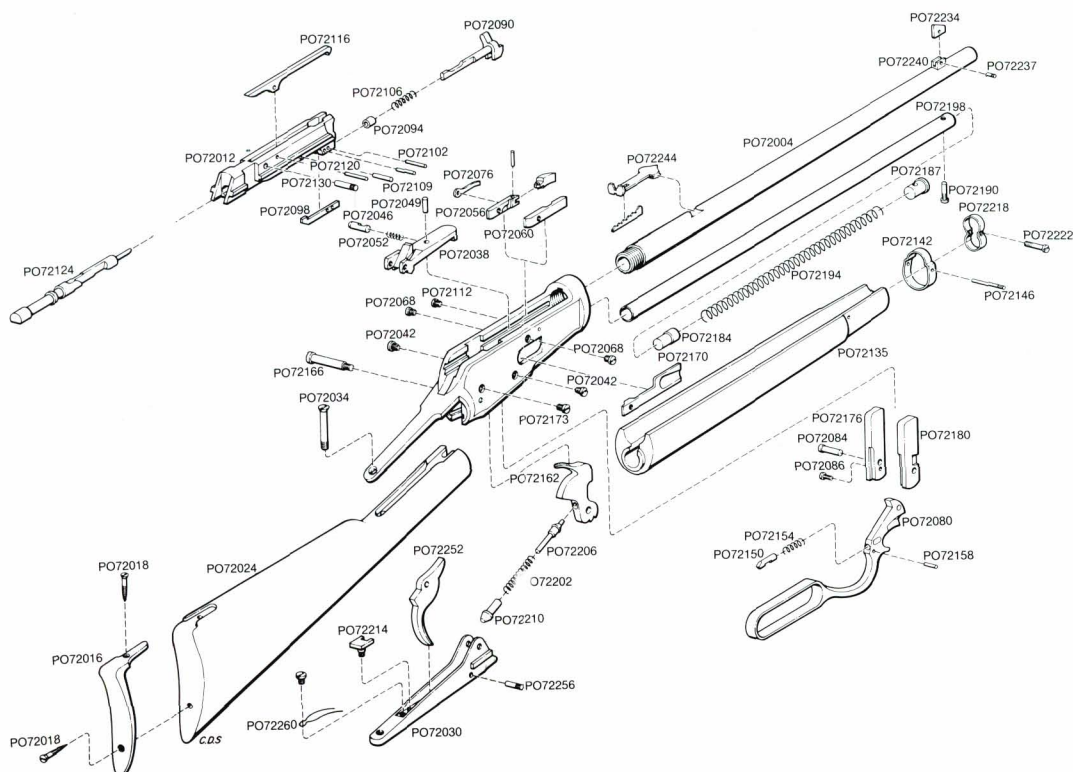


FIGURE 2

4. **WITH A ROUND IN THE CHAMBER, YOU NEED ONLY THUMB THE HAMMER BACK TO ITS FULL COCK POSITION TO READY THE RIFLE FOR FIRING.** Otherwise, cycling the lever to place a round in the chamber will leave the hammer in the full cock position.

Browning 92

Schematic is provided for parts identification only and should not be used as a guide to assemble guns.



PO72004	Barrel with Receiver	PO72102	Ejector Collar Stop Pin	PO72202	Mainspring
PO72012	Breech Bolt	PO72106	Ejector Spring	PO72206	Mainspring Guide Inner
PO72016	Butt Plate	PO72109	Ejector Stop Pin	PO72210	Mainspring Guide Outer
PO72018	Butt Plate Screw	PO72112	Ejector Stop Pin Plug Screw	PO72214	Mainspring Guide Stud
PO72024	Butt Stock	PO72116	Extractor	PO72218	Muzzle Clamp
PO72030	Butt Stock Lower Tang	PO72120	Extractor Pin	PO72222	Muzzle Clamp Screw
PO72034	Butt Stock Tang Screw	PO72124	Firing Pin	PO72234	Sight Blade Front
PO72038	Carrier	PO72130	Firing Pin Stop Pin	PO72237	Sight Blade Pin
PO72042	Carrier Screw	PO72135	Forearm	PO72240	Sight Body Front
PO72046	Carrier Striker	PO72142	Forearm Band	PO72244	Sight Rear
PO72049	Carrier Striker Pin	PO72146	Forearm Band Pin	PO72248	Sight Elevator Rear
PO72052	Carrier Striker Spring	PO72150	Friction Stud	PO72252	Trigger
PO72056	Cartridge Guide Left	PO72154	Friction Stud Spring	PO72256	Trigger Pin
PO72060	Cartridge Guide Right	PO72158	Friction Stud Stop Pin	PO72260	Trigger Spring
PO72064	Cartridge Guide Pin	PO72162	Hammer	PO72264	Trigger Spring Screw
PO72068	Cartridge Guide Screw	PO72166	Hammer Screw		
PO72072	Cartridge Stop	PO72170	Loading Gate Cover		
PO72076	Cartridge Stop Spring	PO72173	Loading Gate Cover Screw		
PO72080	Cocking Lever	PO72176	Locking Bolt Left		
PO72084	Cocking Lever Pin	PO72180	Locking Bolt Right		
PO72086	Cocking Lever Stop Screw	PO72184	Magazine Follower		
PO72090	Ejector	PO72187	Magazine Plug		
PO72094	Ejector Collar	PO72190	Magazine Plug Screw		
PO72098	Ejector Collar Stop	PO72194	Magazine Spring		
		PO72198	Magazine Tube		

5. **AFTER EACH SHOT, IT IS NECESSARY TO LOWER THE LEVER TO OPEN THE ACTION**, extract the spent cartridge, and eject the empty brass. When you raise the lever, the bolt will pick up the next round and push it into the chamber. Be sure you cycle the lever completely. At the bottom of the stroke, resistance will be felt as the lever raises the front end of the carrier and aligns the next round with the chamber.

6. **TO UNLOAD THE RIFLE IT IS NECESSARY TO STRIP SUCCESSIVE CARTRIDGES FROM THE MAGAZINE TUBE BY REPEATEDLY CYCLING THE LEVER. KEEP THE MUZZLE POINTED IN A SAFE DIRECTION AND DO NOT ALLOW YOUR TRIGGER FINGER TO TOUCH THE TRIGGER DURING THIS OPERATION.**

HAMMER

Like most lever action rifles with exposed hammers, the Browning 92 does not have a separate manual safety. The exposed hammer itself can be an excellent indicator of the safety* status of the rifle.

The hammer has three positions: Full cock, half cock, and dropped or fired.

*See handling precautions at the beginning of this booklet.

1. **FULL COCK POSITION**—the hammer is all the way to the rear (see fig. 3). At this point, any pull or force on the trigger could allow the hammer to fall, firing the rifle.



FIGURE 3

The hammer can be placed in this position in either of two ways. First, every time the lever is cycled the rearward movement of the bolt will leave the hammer in this position. The hammer may also be manually placed at full cock by pressing it rearward with the thumb until it engages the full cock notch. Be

*See handling precautions at the beginning of this booklet.

sure to keep your finger off the trigger while cocking the hammer.

2. **HALF COCK POSITION**—This is the position where the hammer should be placed for handling and storage (see fig. 4.)



FIGURE 4

In order to move the hammer from full cock to the half cock position, you must first place your thumb on the hammer to restrict its forward movement. The trigger is then depressed to release the hammer from the full

cock notch and then released so that the sear may engage the half cock notch. If the trigger remains depressed, the hammer will continue past the half cock position to the dropped or fired position.

A wise practice to follow is to place the point of the thumb in the "V" between the hammer and the firing pin so that it can act as a cushion against accidental hammer fall, and at the same time, ease the hammer into the half cock notch. A little practice with an empty rifle will enable a person to become quite adept at using the thumb in this manner.

3. **DROPPED OR FIRED POSITION**—This is the position of the hammer after the rifle has been fired (see fig. 5).



FIGURE 5

Like its nineteenth century counterpart, your Browning 92 has a full length firing pin. This means that with a cartridge in the chamber and the hammer in the dropped or fired position, one end of the firing pin will be touching the hammer and the other end of the firing pin will be resting against the primer of the cartridge. In this configuration, a sudden jar to either the hammer or the rifle could cause discharge.

TRIGGER

The trigger mechanism has been set at the factory to provide a pull of approximately 5½ pounds. It is recommended that no attempt to change these adjustments be made by any other than a qualified gunsmith.

SIGHT ADJUSTMENT

This rifle is equipped with a classic cloverleaf rear sight with a notched elevation ramp. To add elevation and raise the point of impact simply move the cloverleaf to a higher notch. The reverse procedure lowers the point of impact (see fig. 6.)

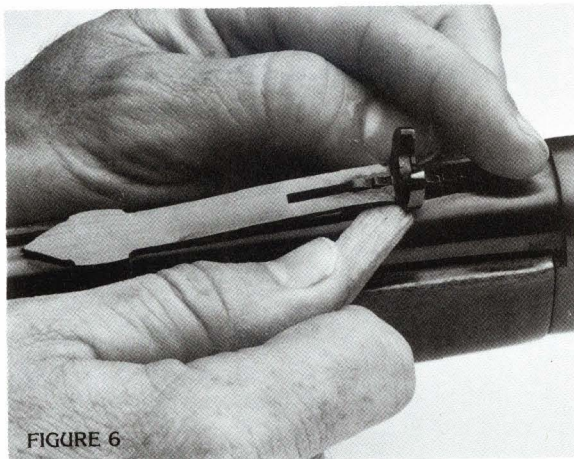


FIGURE 6

If horizontal correction is required (move the point of impact to the right or left,) the rear sight must be moved a very slight amount in the dovetail slot in the barrel. This is accomplished by lightly tapping the BASE of the rear sight in the same direction you want the bullet to move; i.e. if you want the point of bullet impact to move to the left, tap the rear sight to the left; if you want to move the point of bullet impact to the right, tap the rear sight to the right. A small wood dowel or other non-metallic object should be used to bear against the sight base during tapping to avoid marring the finish (see fig. 7.)

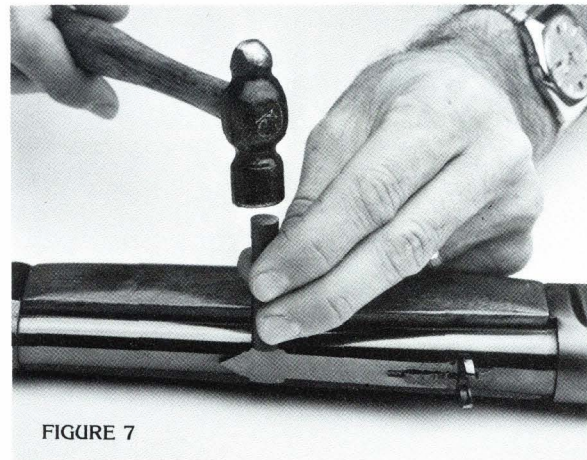


FIGURE 7

Horizontal adjustment of the rear sight is a process of trial and error using the method described above. Fortunately, it is seldom necessary. Before your rifle left the factory, it was carefully test-fired to see that it met our standards of accuracy.

The front sight is a steel post and is not adjustable.

CLEANING SUGGESTIONS

The correct procedure for cleaning your rifle is as follows:

BE CERTAIN THE CHAMBER AND MAGAZINE ARE UNLOADED, THE LEVER IS DOWN AND THE EJECTION PORT IS OPEN.

1. **USING A RIFLE ROD WITH TIP AND PATCH LARGE ENOUGH FOR SNUG FIT IN BORE**, insert rod and patch in barrel and run back and forth several times. Caution should be taken that the rod or handle does not strike the crown of the muzzle as damage to this area can affect the accuracy of the rifle.
2. **INSPECT THE CHAMBER AND BORE FOR POWDER FOULING.** A normal amount of powder residue can be expected and is not serious. It can usually be removed by repeating step No. 1, using a patch saturated with nitro-solvent. If or when fouling should become heavy, it can be removed with a brass bore brush. Dip the brush in nitro-solvent and scrub chamber and bore until the fouling is removed. To prevent brass bristles from breaking off, the brush should be pushed completely through bore before being withdrawn.

SERVICE OR REPAIR

If your rifle should require service or repairs, we suggest you first contact a local authorized Browning Firearms Service Center. Your Browning Sporting Goods dealer can tell you the address of the Service Center nearest you or you may call or write our Consumer Information Department in Morgan, Utah (801) 876-2711.

Otherwise you may return your rifle to our own repair facility for servicing. The address is:

Browning Service Department
Route 4, Box 624-B, Tenbrook Road
Arnold, Missouri 63010
Phone: (314) 287-6800

CANADIAN CUSTOMERS—Please call or write:
Browning Canada Sports Ltd/Ltée
5350 Ferrier Street
Montreal, Quebec H4P 1L9
Phone: (518) 298-8130

When returning your rifle for servicing, please be sure **the chamber and magazine are unloaded**, package it securely in a cardboard container and insure the shipment. Under no circumstances should ammunition be returned as it is against postal and commerce regulations. Send a letter to our Service Department clearly describing the trouble experienced and the repairs or alterations desired. If convenient, also enclose a copy of your letter with the gun.

3. **AFTER FOULING HAS BEEN REMOVED, THE BORE SHOULD BE WIPED DRY** and then a slightly oiled patch run through it for preservation. Browning Gun Oil is recommended.
4. **THE BOLT FACE AND INTERIOR OF THE RECEIVER SHOULD BE WIPED OFF WITH A CLEAN RAG.** Any dried oil in these areas and on the carrier feed ramp should be removed. Follow this cleaning with a very light film of oil. Do not pour large quantities of oil into the action. An excess of oil will run into the wood and cause it to soften or warp.
5. **WIPE ALL EXPOSED METAL SURFACES WITH AN OILED CLOTH MAKING SURE TO WIPE RIFLE CLEAN OF ALL FINGER MARKS** where moisture will accumulate. Ordinary good judgment will, of course, indicate that the metal of the gun should receive a light film of oil any time the rifle has been exposed to weather or handling.
6. **THE WOOD SURFACES CAN ALSO BE WIPED WITH BROWNING GUN OIL.** For extra beauty and durability, the stock may also be enhanced through the application of any quality wood or furniture polish.

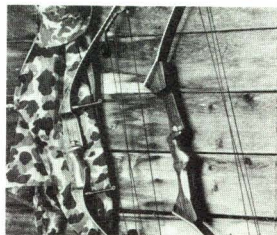
BROWNING SPORTSMAN'S CLOTHING—Hunting and shooting clothing tailored for comfort, utility and style. Also hats, shooting gloves, and leather belts.



BROWNING BOOTS—Browning Boots are known for their comfort and long wear. They're built from the finest leathers, with features like Vibram soles, Goodyear storm welts, Norwegian reverse welts, full glove leather linings and soft cushion insoles.



BROWNING ARCHERY EQUIPMENT—Browning compound bows give you select hardwood handle risers, limbs of hard rock maple and fiberglass laminations and eccentric cams mounted in limb notches rather than on bulky metal hangers for a faster, hard-hitting arrow. In addition to high performance hunting models, there are special light draw weight models for junior and lady archers.



BROWNING GOLF EQUIPMENT—Whether you shoot double bogey or par, Browning's line of low profile clubs, distinctive bags, and tireless Bag Boy Golf Carts will make your game more enjoyable.



You Are Responsible For Firearms Safety

As a gun owner, you accept a set of demanding responsibilities. How seriously you take these responsibilities can mean the difference between life and death. Failure to follow any of these instructions can cause extensive damage to your gun and/or possible serious injury or death to yourself and others. There is no excuse for careless or abusive handling of any firearm. At all times handle any firearm with intense respect for its power and potential danger.

PLEASE READ AND UNDERSTAND ALL OF THE CAUTIONS, PROPER HANDLING PROCEDURES AND INSTRUCTIONS OUTLINED IN THE OWNER'S MANUAL BEFORE USING YOUR NEW FIREARM.

1. **ALWAYS KEEP THE MUZZLE OF YOUR RIFLE POINTED IN A SAFE DIRECTION**, even though you are certain that the rifle is unloaded. Never point any firearm at anything you do not intend to shoot. Be extremely alert and aware of all persons and property within the range of your ammunition.
2. **NEVER RELY TOTALLY ON YOUR RIFLE'S MECHANICAL "SAFETY" DEVICE**. The word "safety" describes a gun's trigger block mechanism, sear block mechanism, hammer block mechanism or firing pin block mechanism. These mechanical devices are designed to place your gun in a **SAFER** status. No guarantee can be made that the gun will not fire even if the "safety" is in the "on safe" position. See "**Operations of the Safety**" for instructions on operation of YOUR gun's "safety."
LIKE ANY MECHANICAL DEVICE, A "SAFETY" CAN SOMETIMES FAIL; IT CAN BE JARRED OR INADVERTENTLY MANIPULATED INTO AN UNSAFE CONDITION.
Mechanical "safeties" merely aid safe gun handling and are no excuse for pointing your rifle's muzzle in an unsafe direction.
While it is a good idea to "test" your rifle's mechanical "safeties" periodically for proper function, **NEVER TEST IT WHILE YOUR RIFLE IS LOADED OR POINTED IN AN UNSAFE DIRECTION**
Safe gun handling does not stop with your gun's mechanical "safety devices -- it starts there. Always treat your rifle with the respect due a loaded, ready-to-fire firearm.
3. **WHENEVER YOU HANDLE A FIREARM, OR HAND IT TO SOMEONE, ALWAYS OPEN THE ACTION IMMEDIATELY, VISUALLY CHECK YOUR RIFLE'S CHAMBER, FEED MECHANISM AND MAGAZINE.**
Make certain they do not inadvertently contain any ammunition. Always keep the chamber empty and "safety" in the "on safe" position unless shooting is imminent.
4. **DO NOT TRANSPORT YOUR RIFLE LOADED, WHETHER IN A SCABBARD, GUN CASE, OR OTHER CONTAINER.**
5. **HUNTING FROM ELEVATED SURFACES SUCH AS TREE STANDS IS DANGEROUS**, and may increase the risk of handling a firearm. The following rules should always be observed by you and those you hunt with: **Always** make certain that the stand being used is safe and stable. **Always** make certain that your firearm is unloaded when it is being taken up to and down from the stand. **Always** make certain that your firearm is not dropped from the stand, or dropped while it is being taken up to or down from the stand. **Remember**, a loaded firearm may discharge when dropped, even with the safety in the "on safe" position.

6. **BEWARE OF BARREL OBSTRUCTIONS**, for the safety of both your gun and yourself. Mud, snow, and an infinite variety of other obstructions may inadvertently lodge in a barrel bore. It takes only one small obstruction to cause dangerously increased pressures that can ruin (swell or rupture) the finest rifle barrels.
BEFORE CHECKING FOR A BARREL OBSTRUCTION, BE CERTAIN NO LIVE ROUND IS IN THE CHAMBER AND THAT THE MAGAZINE IS REMOVED AND FEED MECHANISMS ARE COMPLETELY EMPTY. PLACE THE "SAFETY" IN THE "ON SAFE" POSITION.
Look through the barrel to be sure it is clear of any obstruction. If an obstruction is seen, no matter how small it may be, clean the bore with a cleaning rod and patch as described in "**Cleaning and Maintenance Suggestions.**" Before the first firing, clean the bore with a cleaning rod and patch, and wipe away any anti-rust compound in the action/chamber areas.
7. **ALWAYS UNLOAD YOUR RIFLE WHEN NOT IN USE. REFER TO "UNLOADING THE RIFLE" FOR AN EXPLANATION OF HOW TO UNLOAD YOUR RIFLE PROPERLY.**
As a safety precaution, it is preferable to disassemble your gun for storage. Store your gun and ammunition separately -- well beyond the reach of children. Take all safeguards to ensure your rifle does not become available to untrained, inexperienced or unwelcome hands.
8. **USE THE PROPER AMMUNITION.**
The barrel and action of this rifle have been made with substantial safety margins over the pressures developed by established American commercial loads. Nevertheless, Browning assumes no liability for incidents which occur through the use of cartridges of nonstandard dimensions which develop pressures in excess of commercially available ammunition with standards established by the Sporting Arms and Ammunitions Manufacturers' Institute (SAAMI).
BE ALERT TO THE SIGNS OF AMMUNITION MALFUNCTION.
If you detect an off sound or light recoil when a cartridge is fired, **DO NOT LOAD ANOTHER CARTRIDGE INTO THE CHAMBER.** Open the action and remove all cartridges from the magazine, chamber and action areas. With the action open, glance down the barrel to make sure that an obstruction does not remain in the barrel. If there is an obstruction, completely clear the barrel before loading and firing again. Failure to follow these instructions can cause extensive damage to your gun and possible serious injury to yourself and others.
MAKE SURE OF ADEQUATE VENTILATION IN THE AREA THAT YOU DISCHARGE A FIREARM. WASH HANDS THOROUGHLY AFTER EXPOSURE TO AMMUNITION OR CLEANING A FIREARM.
Lead exposure can be obtained from discharging firearms in poorly ventilated areas, cleaning firearms or handling ammunition. Lead is a substance that has been known to cause birth defects, reproductive harm and other serious injury.
9. **DO NOT SNAP THE FIRING PIN ON AN EMPTY CHAMBER -- THE CHAMBER MAY NOT BE EMPTY!**
Treat every gun with the respect due a loaded gun, even though you are certain the gun is unloaded.
10. **KEEP FINGERS AWAY FROM THE TRIGGER WHILE UNLOADING, LOADING, UNTIL YOU ARE READY TO SHOOT.**

11. **BE SURE OF YOUR TARGET AND BACKSTOP.**
Particularly during low light periods. Know the range of your ammunition. Never shoot at water or hard object.
12. **ALWAYS UNLOAD YOUR RIFLE'S CHAMBER BEFORE CROSSING A FENCE, CLIMBING A TREE, JUMPING A DITCH OR NEGOTIATING OTHER OBSTACLES.**
Refer to "**Unloading The Rifle**" for instructions on the unloading of your rifle. Never place your loaded rifle on or against a fence, tree, car or other similar object.
13. **WEAR EYE AND EAR PROTECTION WHEN SHOOTING.**
Unprotected, repeated exposure to gunfire can cause hearing damage. Wear ear protectors (shooting ear plugs or muffs) to guard against such damage. Wear shooting glasses to protect your eyes from flying particles. Allow proper distance (eye relief) between the scope and your eye when firing a scoped rifle or shotgun. Always keep a safe distance between the muzzle of your firearm and any persons nearby, as muzzle blast, debris and ejecting shells could inflict serious injury. Also, wear eye protection when disassembling and cleaning your shotgun to prevent the possibility of springs, spring-tensioned parts, solvent or other agents from contacting your eyes.
14. **DROPPING A LOADED GUN CAN CAUSE AN ACCIDENTAL DISCHARGE** even with the "safety" in the "on safe" position. Be extremely careful while hunting or during any shooting activity, to avoid dropping any firearm.
15. **IF YOUR RIFLE FAILS TO FIRE, KEEP THE MUZZLE POINTED IN A SAFE DIRECTION.**
Hold this position for a minimum of 30 seconds. Carefully open the action and remove the cartridge. If the primer is indented, the cartridge should be disposed of in a way that cannot cause harm. If the primer is not indented, your firearm should be examined by a qualified gunsmith and the cause of the malfunction should be corrected before further use.
16. **BE DEFENSIVE AND ON GUARD AGAINST UNSAFE GUN HANDLING AROUND YOU AND OTHERS.**
Don't be timid when it comes to gun safety. If you observe other shooters violating any of these safety precautions, politely suggest safer handling practices.
17. **BE CERTAIN YOUR RIFLE IS UNLOADED BEFORE CLEANING.** Because so many gun accidents occur when a firearm is being cleaned, special and extreme care should be taken to be sure your gun is unloaded before disassembly, cleaning and reassembly. Keep ammunition away from the cleaning location. Never test the mechanical function of any firearm with live ammunition.
18. **TEACH AND SUPERVISE FIREARMS SAFETY TO ALL MEMBERS OF YOUR FAMILY -- ESPECIALLY TO CHILDREN AND NONSHOOTERS.**
Closely supervise newcomers to the shooting sports. Encourage enrolling in hunting/shooting safety courses.
19. **NEVER DRINK ALCOHOLIC BEVERAGES OR TAKE ANY TYPE OF DRUGS BEFORE OR DURING SHOOTING.**
Your vision and judgment could be dangerously impaired, making your gun handling unsafe to you and to others.

20. **READ AND HEED ALL WARNINGS** in this instruction book, on ammunition boxes and with all accessories that you install on your firearm. It is your responsibility to secure the most up-to-date information on the safe handling procedures of your Browning gun. Browning assumes no liability for incidents which occur when unsafe or improper gun accessories or ammunition combinations are used.
21. **PERIODIC MAINTENANCE -- AVOID UNAUTHORIZED SERVICING.**
Your rifle is a mechanical device which will not last forever, and as such, is subject to wear and requires periodic inspection, adjustment and service. Browning firearms should be serviced by a Browning Recommended Service Center or by Browning's service facility in Arnold, Missouri. Browning cannot assume any responsibility for injuries suffered or caused by unauthorized servicing, alterations or modifications of Browning firearms.
22. **BROWNING RESERVES THE RIGHT TO REFUSE SERVICE ON FIREARMS THAT HAVE BEEN ALTERED, ADDED TO OR SUBSTANTIALLY CHANGED.**
Removal of metal from barrel(s), or modification of the firing mechanism and/or operating parts may lead to Browning's refusal of service on such firearms. Browning will charge the owner parts and labor to return the firearm to original Browning specifications.
DO NOT, UNDER ANY CIRCUMSTANCES, ALTER THE TRIGGER, SAFETY OR PARTS OF THE FIRING MECHANISM OF THIS OR ANY OTHER FIREARM. FAILURE TO OBEY THIS WARNING MAY RESULT IN INJURY OR DEATH TO YOURSELF OR OTHERS.

BE CAREFUL!