

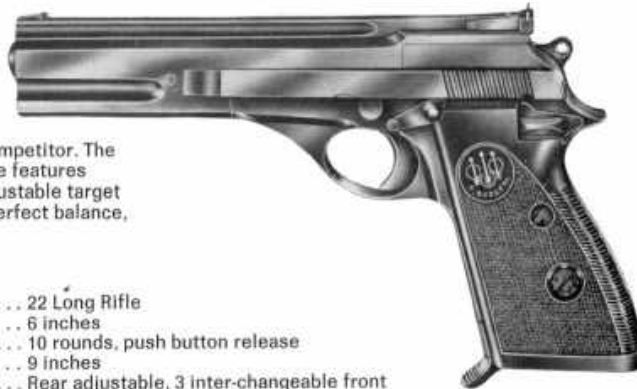
Beretta

Model 76
Caliber .22 L.R.

- Parts List
- Instructions
- Maintenance
- Specifications

Armi Beretta S.p.A. - 25063 Gardone Valtrompia, Brescia (Italy)

Mod. 76 Beretta .22 L.R. Caliber



Designed for the serious minded competitor. The target pistol that incorporates all the features necessary in match shooting . . . adjustable target sights, heavy barrel, ideal weight, perfect balance, and non-glare rib.

Specifications:

Caliber	22 Long Rifle
Barrel	6 inches
Magazine	10 rounds, push button release
Length Overall	9 inches
Sights	Rear adjustable, 3 inter-changeable front
Safety	Lever
Hammer	External
Finish	Blue
Weight	App. 33 ounces
Stock	Two piece wrap-around, checkered
Slide	Stays open on last shot

OPTIONAL

Wooden grips



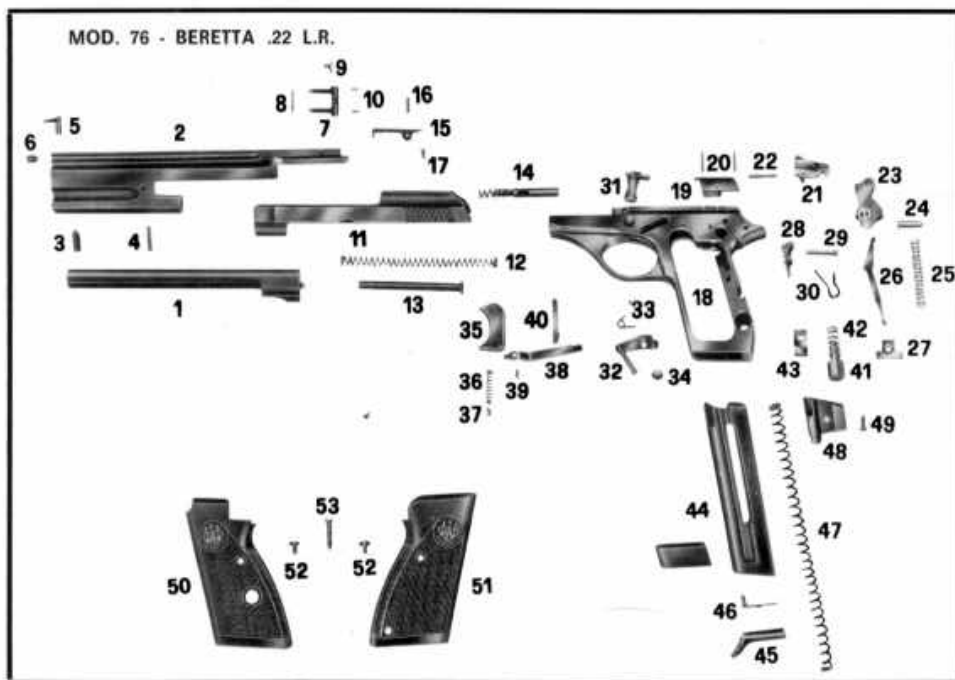
- 1 - Remove the magazine by depressing the release button (Figure 1).
- 2 - Pull slide back fully and check chamber for loaded round. (Carefully cock hammer first in order to ease backward movement).
- 3 - Holding the pistol in the right hand, pull slide to the rear and align slide lock with recess in slide. (Figure 2).

- 4 - With right thumb, rotate the slide lock toward the muzzle.
- 5 - Pull slide forward and remove from the frame. (Figure 3). (Should it be difficult to rotate slide lock, tap barrel muzzle on a wooden surface two or three times in order to relieve pressure between slide lock and barrel lug. If you should encounter further difficulty, pull slide back as far as possible and release several times in order to ease forward motion).



- 6 - In order to remove barrel from the slide assembly, release recoil spring and guide. (Spring and guide are under tension . . . remove carefully). The barrel may now be withdrawn through the underside of the slide (Fig. 4).
- 7 - No further disassembly is recommended except by a competent gunsmith.
- 8 - Assemble in reverse order.

TAKE CARE OF YOUR GUN, IT WILL LAST LONGER AND YOU WILL GET THE BEST RESULTS. KEEP IT CLEAN AND LUBRICATED THROUGHOUT. AFTER EACH FIRING, CLEAN BARREL TO AVOID OXIDATION.



COMPONENT PARTS

MOD. 76 - BERETTA .22 L.R.

- | | |
|---------------------------------|-------------------------------------|
| 1 - Barrel | 28 - Sear |
| 2 - Weight | 29 - Sear pin |
| 3 - Weight screw | 30 - Sear spring |
| 4 - Weight pin | 31 - Slide lock with circlip |
| 5 - Interchangeable front sight | 32 - Slide catch |
| 6 - Front sight screw | 33 - Slide catch spring |
| 7 - Rear sight | 34 - Slide catch screw |
| 8 - Rear sight pin | 35 - Trigger |
| 9 - Rear sight screw | 36 - Trigger bar spring |
| 10 - Rear sight spring (2) | 37 - Trigger bar spring plunger |
| 11 - Slide | 38 - Trigger bar |
| 12 - Recoil spring | 39 - Trigger bar pin |
| 13 - Recoil spring guide | 40 - Disconnecter |
| 14 - Firing pin with spring | 41 - Magazine release button |
| 15 - Extractor | 42 - Magazine release button spring |
| 16 - Extractor pin | 43 - Magazine release catch |
| 17 - Extractor spring | 44 - Magazine box |
| 18 - Steel frame | 45 - Magazine bottom |
| 19 - Ejector | 46 - Magazine bottom plate |
| 20 - Ejector (2) | 47 - Magazine spring |
| 21 - Safety | 48 - Follower |
| 22 - Safety spring with pin | 49 - Follower screw |
| 23 - Hammer | 50 - Left grip |
| 24 - Hammer pin | 51 - Right grip |
| 25 - Hammer spring | 52 - Grip screw (2) |
| 26 - Hammer strut | 53 - Grip securing screw |
| 27 - Strut nut | |