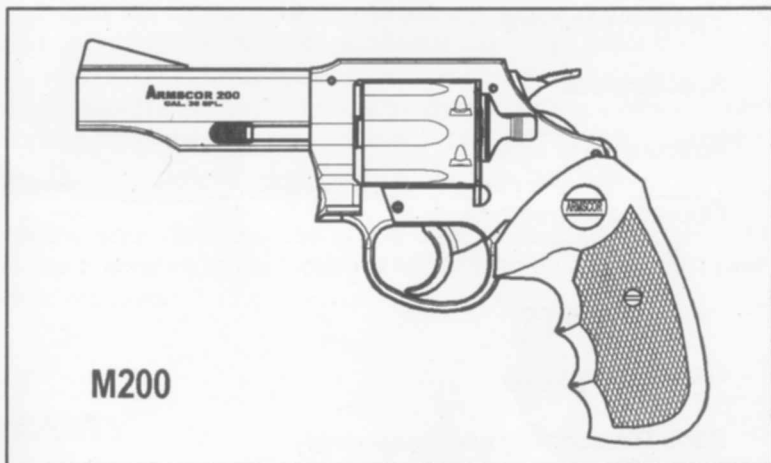


# ARMSCOR

## M200 SERIES REVOLVER

CAL. 38 SPL.



## USER'S MANUAL

**WARNING:** READ THE INSTRUCTIONS AND SAFETY PRECAUTIONS  
IN THIS MANUAL CAREFULLY BEFORE USING THIS  
FIREARM.

---

---

## TABLE OF CONTENTS

Warranty Information	2
Statement of Liability	2
General Information and Mechanical Characteristics	3
Safety Precautions	4
Specifications	5
Ammunition to Use	5
Operating Instructions	6
• Loading	
• Firing	
• Unloading	
Care and Cleaning	7
Basic Disassembly and Reassembly	
• Disassembly	8
• Reassembly	8
Parts List	9
Exploded Drawing	10

---

---

**"READ THE INSTRUCTIONS and SAFETY PRECAUTIONS IN THIS MANUAL CAREFULLY BEFORE USING THIS FIREARM."**

### STATEMENT OF LIABILITY

This revolver is classified as a firearm or dangerous weapon. It is expressly understood that we assume no liability for its resale or unsafe handling under local laws and regulations. Arms Corporation of the Philippines assumes no responsibility for physical injury or property damage resulting from either intentional or accidental discharge, or for the function of the gun subjected to influence beyond their control. Arms Corporation of the Philippines will honor no claims which may result from careless handling, unauthorized adjustments, defective or improper ammunition, corrosion or neglect.

Examine your gun carefully at the time of purchase. It should be forwarded immediately to the factory or its sales agent if any adjustment of any kind is required.

### WARRANTY

Arms Corporation of the Philippines will adjust or repair, to its commercial standard, the gun or any part thereof found by us to be defective in material or workmanship. Such services shall be made free of charge within one (1) year from date of registered purchase.

## GENERAL INFORMATION and MECHANICAL CHARACTERISTICS

The **M-200 REVOLVER** is ARMSCOR'S latest all-new version of a six-shot, swing-out cylinder handgun specifically designed for Police and Military use. It comes as a result of an intensive design and product development which took a lot of research and in-depth design analysis for mechanical features, materials and modern manufacturing processes.

The gun features a simple but modern and reliable mechanical mechanism of high quality standards. It utilizes a spring-loaded, floating firing pin coupled with a transfer bar mounted on and controlled by the trigger. Only when the trigger is fully pulled does the transfer bar interpose itself between the firing pin and falling hammer, which allows the firing pin to contact the primer, thus igniting the cartridge.

This type of system ensures greater safety and dependability, and makes it virtually impossible for any accidental discharge to occur even under abnormal circumstances or rough handling. The only time the gun will fire is when the trigger is fully pulled to the rear!

The hammer has a wide spur serrated thumb piece for fast, positive non-slip cocking, and is activated by a coil spring which provides the needed energy for positive firing.

The **M-200 REVOLVER** is made of hi-grade chrome moly steel on all action parts which are heat-treated for strength, durability and consistency over prolonged usage and repeated firing. These component parts are made utilizing the latest technology in precision investment casting, making many of the parts standard and interchangeable.

Other notable features of the gun are: well-polished metal, deep blue finish; combat-type plastic grip; precision drilled; reamed and button-rifled barrel; carefully machined cylinder made from aircraft high quality steel; crisp single shot action and smooth double action; quick and natural pointing ability that can be relied upon in any combat situation.

## SAFETY PRECAUTIONS

Safety must be the first and constant consideration of every person who handles firearms and ammunition. The person with a gun in his possession has an important responsibility. He must know how to use his firearm safely. **DO NOT ATTEMPT TO USE ANY FIREARM WITHOUT HAVING A COMPLETE UNDERSTANDING OF ITS PARTICULAR CHARACTERISTICS AND SAFE USE.**

The **M-200 REVOLVER** is one of the safest type handguns, as long as it is used correctly by a competent person. Following are basic safety precautions which the user must be thoroughly familiar with when handling the revolver:

1. Always keep the gun holstered except when drawn for a definite purpose.
2. Always check the gun for live ammunition when picked-up, drawn from the holster, handed to or received from another person.
3. Never point the revolver at anything you do not intend to shoot.
4. Never cock the gun unless you are ready to shoot. Do not even insert your finger in the trigger guard until you are ready to shoot.
5. Avoid dry-firing even with dummy cartridges, unless same is performed on a regular target range or at a known inanimate target.
6. When holding the gun that is ready to fire, be absolutely certain that it is not pointed at any part of your body nor at any person within your immediate vicinity.
7. Beware of obstructions in the barrel. If, when firing, a weak or peculiar report is heard, cease firing, swing open the cylinder at once and inspect the barrel for an obstruction. A stuck bullet or any other object in the barrel should be removed immediately. Not doing so may result in a bulged or burst barrel.
8. When a misfire or a "DUD" is experienced, keep the revolver pointed at the target for at least ten seconds before inspecting the gun; a delayed firing may occur.
9. Always swing-out the cylinder from the gun frame every time an inspection is made.
10. As much as possible, wear shooting glasses and hearing protectors when firing.
11. Do not shoot at a hard surface, or water for the bullet can glance off and travel in unpredictable directions with considerable velocity.
12. Avoid drinking alcoholic beverages when handling the firearm.

## SPECIFICATIONS

Caliber .....	.38 Special
Capacity .....	6 Shots
Action .....	Single and Double
Barrel .....	Half Shroud (M200) Full Shroud (M206) Bull Barrel (M202)
Hammer .....	Wide Serrated Thumbpiece
Trigger .....	Wide Finger Radius; Polished Sides
Sights, Front .....	Fixed Ramp
Rear .....	Fixed Wide Square Notch
Safety .....	Transfer Bar System
Firing Pin .....	Floating
Barrel Length .....	102 Mm. 51 Mm. (M206) 222 Mm. 178 Mm. (M206)
Overall Length .....	143 Mm.
Overall Height .....	.930 Kg. .865 Kg. (M206)
Weight, Empty .....	1.81- 2.95 Kg. 5.25 - 5.90 Kg.
Trigger Pull, Single Action .....	Right Hand. One Turn/455 Mm.
Double Action .....	6
Rifling, Twist .....	Blued
No. Of Grooves .....	Combat Type Plastic Grip Wood Grip (Optional)
Finish .....	
Stocks .....	

**NOTE:** Specifications subject to change without prior notice.

## AMMUNITION

The **M-200 REVOLVER** is chambered for Cal. .38 Special cartridges manufactured in accordance with standard industry practice.

**CAUTION: NEVER USE CARTRIDGES OF UNKNOWN CALIBER AND LOADS. IT IS EXTREMELY DANGEROUS TO USE A CARTRIDGE WHOSE PRESSURE IS GREATER THAN THAT DEVELOPED BY CARTRIDGES LOADED TO INDUSTRY STANDARDS, AS THE FIREARMS MAY BE DAMAGED, AND DEATH OR SERIOUS INJURY TO THE SHOOTER OR OTHER PERSONS MAY RESULT.**

## OPERATING INSTRUCTIONS

**CAUTION: THE M-200 REVOLVER IS PACKED WITH LUBRICANT, IT IS A MUST TO FIRST REMOVE EXCESS OIL AND INSPECT THE GUN BEFORE USAGE. FIRING THE GUN WITH EXCESSIVE OIL, GREASE OR ANY OTHER LUBRICANT MAY RESULT TO SEVERE DAMAGE TO THE FIREARM AND INJURY TO THE SHOOTER AND THOSE NEARBY.**

### LOADING

Loading is done by moving the latch rearward with the right thumb. This will release the cylinder so that it can be swung out to the left side for loading. With the muzzle pointing downwards, insert the cartridges into the cylinder chambers making certain the cartridges are firmly seated. Return the cylinder to its original position **by retracting the latch again and swinging it back to the cylinder**. Make sure that the latch returns, and the cylinder locks in alignment with the barrel bore. The revolver is now ready to fire.

**CAUTION: THE CYLINDER SHOULD NOT BE SWUNG IN AND OUT OF THE FRAME WITH EXCESSIVE FORCE, AND NEVER BY WRIST ACTION.**

### FIRING

**Single-Action Firing** is commonly used for deliberate firing when there is enough time to sight the gun carefully and squeeze the trigger in an unhurried manner. It is accomplished by pulling the hammer to its extreme rearward position; the trigger will hold the hammer in place. The gun may then be fired by merely squeezing the trigger. Single shooting may also be employed in rapid firing, depending on the ability of the shooter to quickly pull the hammer, aim the gun and squeeze the trigger.

**Double-Action Firing** is used where the time or any other circumstance does not allow the shooter to fire in single action fashion. Shooting double-action is done by merely pointing the gun at the target and pulling the trigger rearward to its fullest extent. Release trigger to its forward most position to repeat process of double action firing.

### UNLOADING

To extract the fired or unfired cartridges, move the latch rearward and swing out the cylinder to its extreme outward position, point the gun upwards and press down the ejector rod head. This will eject the cartridges or fired shells from the cylinder chambers. The gun is now ready for reloading.

## CARE and CLEANING

For the revolver to function safely and reliably, it is essential to keep it always in good condition by making it free of rust, dirt, grease and firing residues. It is important to clean and lubricate the gun to avoid rusting of metal parts after firing and before storing. Doing the job requires no disassembly of mechanism parts. Under normal cleaning purposes, removal of the cylinder-crane link assembly is sufficient.

To clean the revolver when not fired or after prolonged storage, rub the external parts with a slightly oiled rug and then **swab** out the bore and cylinder chambers with a flannel patch. Remove excess oil but leave a slight film to protect the metal from rusting. Clean all crevices with a nylon or brass brush. **DO NOT OVER LUBRICATE.**

To clean the revolver after firing, scrub the bore and the cylinder with a gun cleaning solvent (preferably nitro solvent), and then use a brush dipped in solvent, to remove powder and primer residues. Areas to be cleaned are from around the breech of the cylinder, ejector, barrel bore and other adjacent areas which have been subjected to the residue. If there are head residues or foreign matters left inside the barrel or chambers, scrub these parts further with brass brush dipped in powder solvent. After cleaning the gun with solvent, remove all traces of the solvent and apply a light film of oil immediately thereafter. It is normal to find residues in the barrel and cylinder within 24 hours to 48 hours after initial cleaning. These can be removed with bristle brush and a slight re-application of solvent, after which light oil should be re-applied on all surface.

**CAUTION: NEVER STORE THE REVOLVER WITH A PLUG IN THE BARREL. THIS WILL CONTRIBUTE TO THE ACCUMULATION OF MOISTURE. THE GUN SHOULD BE RE-STORED IN ROOMS WITH DRY ATMOSPHERE AND WITH THE LEAST HUMIDITY; IT SHOULD NOT BE STORED ENCASED IN LEATHER OR ANYTHING THAT WILL ATTRACT AND HOLD MOISTURE, CAUSING IT TO RUST.**

When storing the gun for a prolonged period of time, the gun's locking mechanism should be oiled heavily with an acid-free lubricant. The external parts must be heavily coated with an anti-rust oil or grease to prevent moisture from sipping into the internal mechanism and settling on the external surface. Linseed oil should be applied to wooden grips to prevent cracking. CAUTION should be exercised in doing this so as not to affect the moving mechanisms, linseed oil becomes sticky when dry. Before using a revolver that has been stored for a prolonged period of time, the revolver must always be cleaned first as discussed above.

## BASIC DISASSEMBLY and REASSEMBLY

**CAUTION: BEFORE STARTING DISASSEMBLY, CHECK TO ENSURE THAT THE CYLINDER CHAMBERS ARE FREE OF AMMUNITION.**

### DISASSEMBLY

The cylinder-crane link assembly is removed by unscrewing the crane lock screw. Swing out the cylinder and draw forward out of the frame. With leather-padded pliers, unscrew the ejector rod head and remove the crane link out of cylinder. Further stripping of cylinder-ejector assembly is not recommended.

To disassemble the mechanism parts, remove grips and side plate screws and pry up the side plate gently and evenly, tapping the frame lightly to loosen it. Remove the transfer bar and hand from their pivot pins on the trigger. Cock the hammer and insert an opened paper clip through the cross hole of the hammer spring guide to trap the hammer spring. By releasing the hammer, the spring assembly is removed out of frame. Pull the trigger to the rear and remove the hammer and trigger successively out of the frame cavity. Remove the cylinder lock out of its hole in the frame. To remove the cylinder stop, pivot it downward out of its slot in the frame and then lift it from its pivot pin. Further disassembly of the remaining parts (e.g. the firing pin and hammer-plunger assemblies, barrel and pivot pins as attached to frame), is not recommended. This should only be performed at the factory or by a qualified gunsmith.

### REASSEMBLY

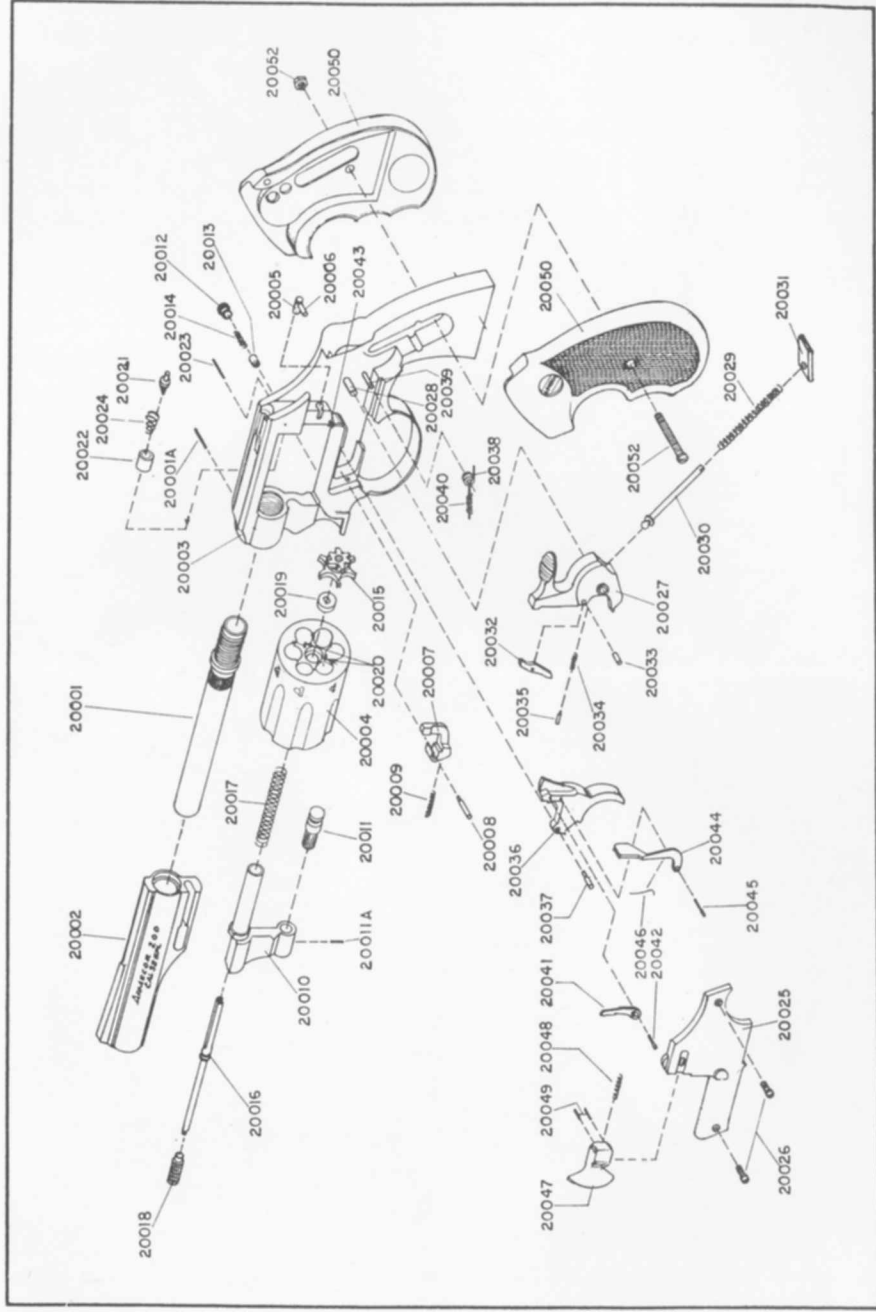
Reassembly is done in the reverse order of disassembly. In attaching the side plate, push the cylinder lock fitted to frame all the way forward. Hold the side plate while depressing the latch until it is even with the edge of the frame. Then, engage its lock lid to its slot in the frame and push the side plate gently inward to its final position. In doing this, make sure that the cylinder lock pin enters its clearance slot on the latch and the transfer bar and hand do not come off free of their pivot pins on the trigger. **RE-CHECK THE GUN FOR PROPER FUNCTIONING BEFORE LOADING LIVE AMMUNITION.**

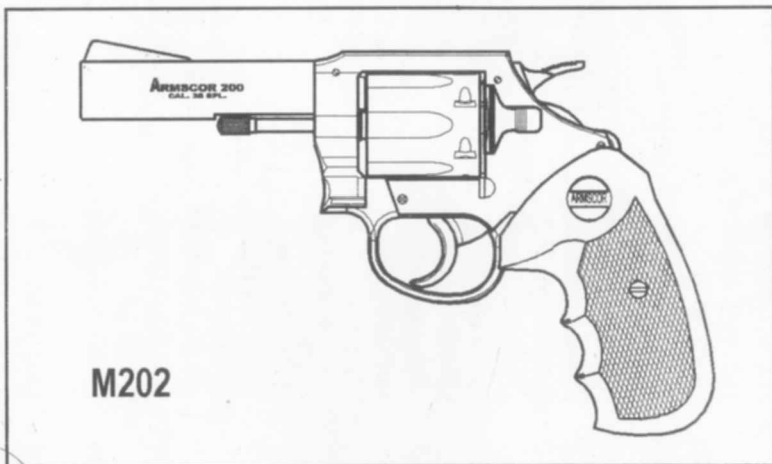
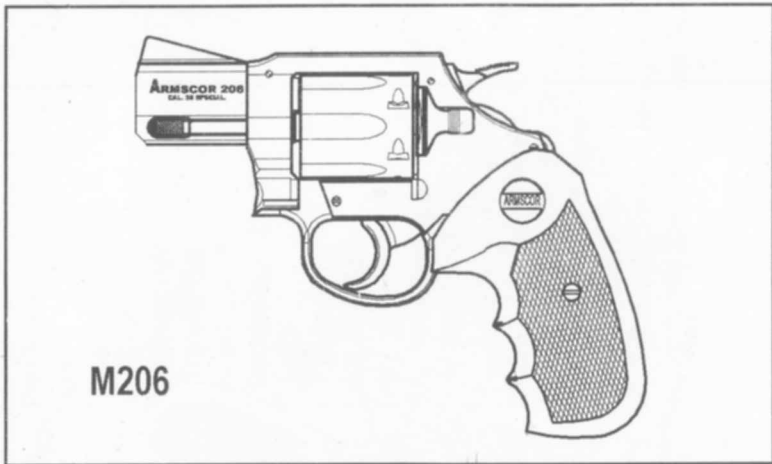
# PART LIST

Part No.	Part Name	Part No.	Part Name	Part No.	Part Name
20001	*Barrel	20020	Ejector Alignment Pin	20041	** Hand
20001A	Barrel Pin	20021	*Firing Pin	20042	Hand Pin
20002	*Barrel Housing	20022	*Firing Pin Bushing	20043	Hand Rest Pin
20003	*Frame	20023	Firing Pin Bushing	20044	** Transfer Bar
20004	*Cylinder	20024	Retainer Pin	20045	Transfer Bar Pin
20005	Cylinder Lock	20025	*Firing Pin Spring	20046	* Transfer Bar Spring
20006	Cylinder Lock Pin	20026	*Side Plate	20047	** Latch
20007	**Cylinder Stop	20027	Side Plate Screw	20048	Latch Spring
20008	Cylinder Stop Pin	20028	** Hammer	20049	Latch Bearing Pin
20009	Cylinder Stop Spring	20029	Hammer Pivot Pin	20050	Grip
20010	*Crane Link	20030	Hammer Spring	20052	Grip Screw and Nut
20011	*Crane Link Pivot	20031	Hammer Spring Guide	20054	Rear Sight Block (M210)
20011A	Crane Link Pivot Stud	20032	Compression Plate	20055	Rear Sight Blade (M210)
20012	Cross Pin	20033	** Hammer Pawl	20056	Rear Sight Block Screw (M210)
20013	Crane Lock Screw	20034	Hammer Pawl Pin	20057	Rear Sight Block Elevating Spring (M210)
20014	Crane Lock Detent	20035	Hammer Pawl Spring	20058	Rear Sight Block Windage Adj. Screw (M210)
20015	Crane Lock Spring	20036	Hammer Pawl Plunger	20059	Rear Sight Block PivotPin (M210)
20016	*Ejector	20037	** Trigger	20060	Rear Sight Elevating Screw Lock Bearing (M210)
20017	Ejector Rod	20038	Trigger Pivot Pin	20061	Rear Sight Elevating Screw Lock Bearing Spring (M210)
20018	Ejector Rod Spring	20039	Trigger Spring		
20019	Ejector Rod Head	20040	Trigger Spring Rod		
20020	*Ejector Rod Guide		Trigger Spring Spacer Spring		

\* Parts Not Sold - Repaired or fitted by factory only.

\*\* Parts that may be fitted by Police Armors or competent gunsmith only.





### WARNING

Discharging firearms in poorly ventilated areas, cleaning firearms, or handling ammunition may result in exposure to lead and other substances known to cause birth defects, reproductive harm and other serious physical injury. Have adequate ventilation at all times. Wash hands thoroughly after exposure.

ARMS CORPORATION OF THE PHILIPPINES  
Armscor Avenue, Fortune, Marikina City 1800, Philippines  
Tel. Nos. (632) 941-6243/44 • 941-4252 • 941-8279  
Fax No. (632) 942-0682  
Email: [info@armscor.com.ph](mailto:info@armscor.com.ph). Website: <http://www.armscor.com.ph>