



ARMSCOR

MODEL 1400

USER'S MANUAL MANUAL

WARNING:

READ THE INSTRUCTIONS AND SAFETY PRECAUTIONS IN THIS MANUAL CAREFULLY BEFORE USING THIS FIREARM.

DISCHARGING FIREARMS IN POORLY VENTILATED AREAS, CLEANING FIREARMS OR HANDLING AMMUNITION MAY RESULT IN EXPOSURE TO LEAD AND OTHER SUBSTANCES KNOWN TO THE STATE OF CALIFORNIA TO CAUSE BIRTH DEFECTS, REPRODUCTIVE HARM AND OTHER SERIOUS PHYSICAL INJURY. HAVE ADEQUATE VENTILATION AT ALL TIMES. WASH YOUR HANDS THOROUGHLY AFTER EXPOSURE.

The model M1400 is among the newest in Armscor line of cal.22 rim fire rifles. It is basically a modified version of the M14P with an enhanced design of receiver, bolt ejector that gives a smoother and more reliable action. The rear of the cocking cam is provided with an indicator that shows the firing pin at "cocked" position. Other notable features include a lightweight and specially contoured barrel and a classic gunstock.

INSTRUCTIONS FOR OPERATING AND CARE

This rifle is packed and shipped from the factory with detached bolt assembly.

*** TO INSERT BOLT INTO RECEIVER**

Cock the bolt assembly by gripping the bolt firmly and rotating the cocking cam counter clockwise. Move safety to "F" position. Depress trigger. Align the lug underneath the bolt assembly with the receiver track. Slide the cocked bolt assembly into the receiver. Push fully forward and turn cocking cam clockwise until lugs are properly seated. Release the trigger.

* TO LOAD MAGAZINE BOX

Hold magazine firmly in one hand. With the other hand, position cartridge over magazine lip just forward of notch. Insert cartridge head under ears at rear of magazine. Repeat until the magazine is fully loaded to its capacity.

* TO MAKE SAFE

Pull safety on right side of the receiver in the direction of the “S” mark. This locks trigger and gun cannot be fired.

* TO ATTACH MAGAZINE BOX

Position magazine open end and ears rearward. Insert magazine into the opening forward of the trigger guard. Push magazine inward until it engages with the magazine catch.

* TO OPEN ACTION

Hold bolt handle and rotate cocking cam counter clockwise. As soon as the lugs clear the lug seat, pull bolt handle fully rearward.

* TO CLOSE ACTION

Push bolt handle fully forward and rotate cocking cam clockwise until lugs are properly seated.

* TO FIRE

BE SURE THAT THE RIFLE IS POINTED AT TARGET! With action closed, move safety to “F” position. Pull the trigger. To repeat, open and close the action. The discharged shell will be ejected and a new cartridge will be fed into chamber. Pull trigger. Repeat process as desired until magazine is empty.

* TO REMOVE MAGAZINE BOX

To disengage magazine, pull magazine catch rearward, hold on lock and pull the box downward and out.

* TO LOAD FOR SINGLE SHOT

Open action. Insert cartridge directly into chamber with empty magazine in place.

* FOR SHORT STORAGE

After firing, swab bore with clean cloth patch wet with approved cleaning solvent. Wipe dry. Apply light coat of oil on barrel bore, cocking cam, bolt and other metal surfaces to keep free of rust.

* FOR LONG STORAGE

After firing, swab bore with clean cloth patch wet with approved cleaning solvent. Wipe dry. Apply a good grade of gun grease or gun oil on the bore and the outside metal surfaces. Before firing after storage, remove all traces of gun grease or gun oil from barrel bore. CHECK THAT BORE IS FREE OF ANY OBSTRUCTION! Obstruction will block passage of bullet and may cause injury to barrel or person.

CAUTION:

The safety in your firearm is correctly designed, fitted and tested. However, any mechanical device can fail. NEVER POINT your firearm at anything but a safe target and never rely upon the safety to justify careless handling.

PRODUCT SPECIFICATIONS:

Model	M1400
Caliber	22 LR
Action	Bolt Action
Sights	Hooded Bead Ramp Front Sight, Rocky Mountain Partridge Type Rear Sight with Serrated Blade for Elevation.
Barrel Length	22.75 inches
Magazine Capacity	6 or 10 Rounds
Overall Length	40.50 inches
Trigger Pull	4.0 – 6.0 Lbs
Length of Pull	13.50 – 14.00 inches
Drop at Comb	1.625 – 1.75 inches
Drop at Heel	3.00 – 3.125 inches

Weight (empty)	6.0 lbs (Approx)
Finish	Blued
Barrel	Ordinance Steel, Precision Rifled with Six (6) Grooves Right Hand Twist.
Stock	Natural finish Philippine Wood stock, Monte Carlo Style with Plastic Butt Pad Without Check Piece, Checkering and Grip Cap.
Other Feature	With Cocking Indicator

PART NAME	PART NUMBER
A- BARREL- RECEIVER ASSEMBLY	
Barrel Receiver Cross Pin	1401
Barrel	140E02
Barrel Take down Stud	1403
Barrel Take down Screw	1404
Barrel Take down Screw Washer	1405
Ejector	140E06
Ejector Screw	1407
Front Sight Hood	1408
Front Sight Bead	140E08
Front Sight Base	140E09
Front Sight Screw	1410
Rear Sight Elevator	1411
Rear Sight Leaf	1412
Rear Sight Leaf Insert	1413
Receiver	140E14
B- BOLT ASSEMBLY	
Bolt	140E15
Cocking Cam	140E16

Cocking Indicator	140E17
Cocking Indicator Spring	140E17A
Cocking Cam Stud	1418
Cocking Cam Stud Retainer	1419
Extractor Left Hand	1421
Extractor Right Hand	1422
Extractor Plunger	1423
Extractor Spring	1424
Firing Pin	1425
Firing Pin Spring	1426
Firing Pin Spring Retainer Pin	1427
Firing Pin Spring Follower	1428
Firing Pin Cross Pin	1429A
Hammer	1429

C- TRIGGER HOUSING ASSEMBLY

Magazine Catch	1430
Magazine Catch Insert	1430A
Magazine Catch Pivot Pin	1431
Magazine Catch Stop Pin	1432
Safety Latch	1433
Safety Latch Bearing	1433A
Safety Latch Bearing Spring	1433B
Safety Latch Pivot Pin	1434
Safety Latch Button	1435
Sear	1436
Sear Pivot Pin	1437
Sear Spring	1438
Sear Stop Pin	1439
Trigger	1440
Trigger Pivot Pin	1441

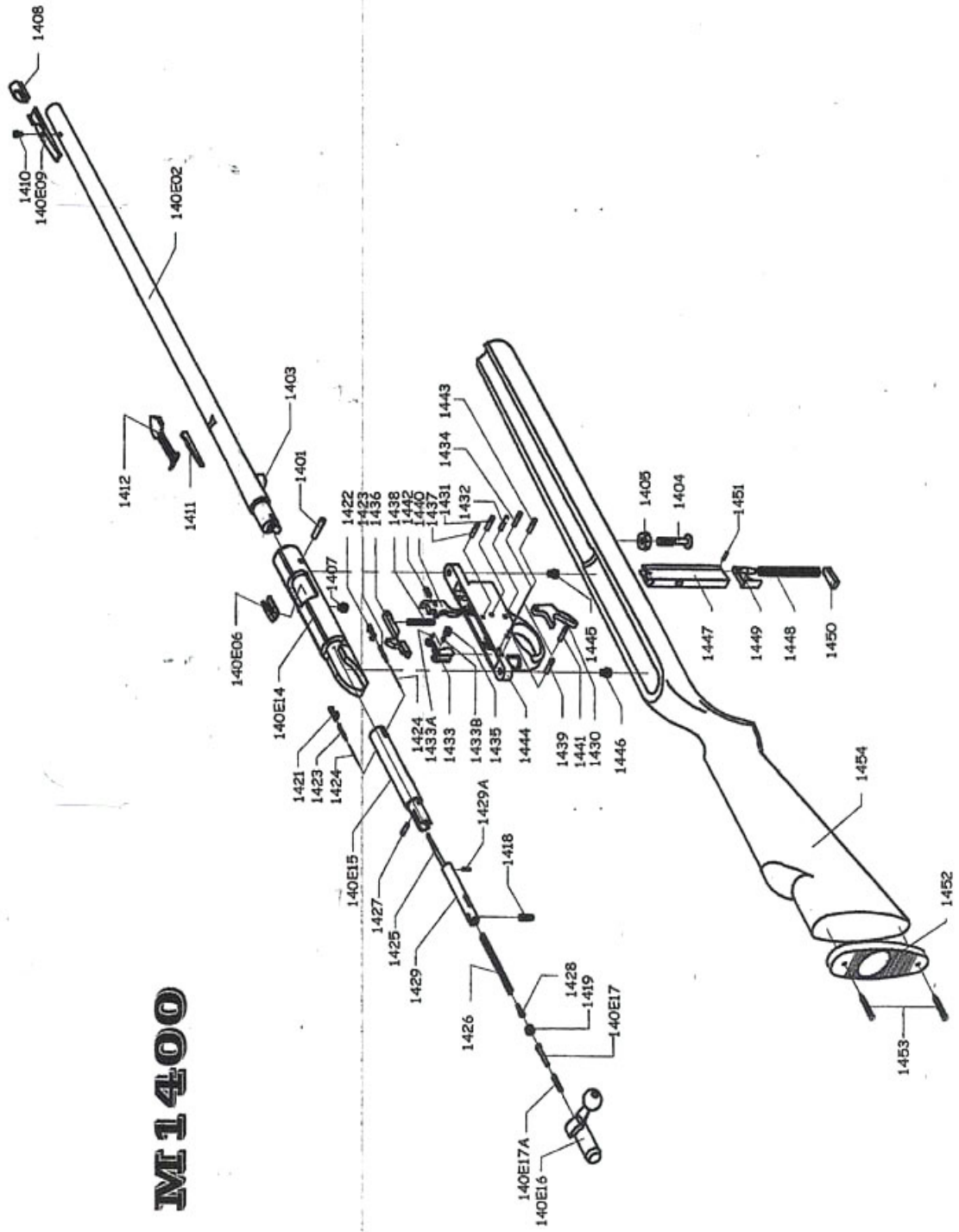
Trigger Spring	1442
Trigger Stop Pin	1443
Trigger Housing	1444
Trigger Housing Hold Down Screw (front)	1445
Trigger Housing Hold Down Screw (rear)	1446

D- MAGAZINE BOX ASSEMBLY

Magazine Box	1447
Magazine Spring	1448
Magazine Spring Follower	1449
Magazine Spring Retainer	1450
Magazine Spring Retainer Cross Pin	1451

E- GUNSTOCK ASSEMBLY

Butt Pad (plastic)	1452
Butt Pad Retainer Screws	1453
Gun Stock	1454



MI 1400