

**TM 9-1015-221-20P**

**SUPERSEDES COPY DATED 27 JUNE 1969**

---

**TECHNICAL MANUAL**

**ORGANIZATIONAL MAINTENANCE  
REPAIR PARTS AND SPECIAL TOOLS LIST**

**FOR**

**RIFLE, RECOILLESS, 106-MM:  
M40A2 (1015-00-133-8484)  
AND M40A4 (1015-00-133-8485)**

---

**HEADQUARTERS, DEPARTMENT OF THE ARMY**

**MAY 1986**

Technical Manual

No. 9-1015-221-20P

HEADQUARTERS  
DEPARTMENT OF THE ARMY  
Washington, DC 19 May 1986

**Organizational Maintenance Repair Parts  
and Special Tools List**

for

**RIFLE, RECOILLESS, 106-MM****M40A2 (1015-00-133-8484)****AND****M40A4 (1015-00-133-8485)**


---

Current as of 9 January 1986

**REPORTING ERRORS AND RECOMMENDING IMPROVEMENTS**

You can help improve this manual. If you find any mistakes or if you know of a way to improve the procedures, please let us know. Mail your letter, DA Form 2028 (Recommended Changes to Publications and Blank Forms), or DA Form 2028-2 located in back of this manual direct to: Commander, US Army Armament, Munitions and Chemical Command, ATTN: AMSMC-MAS, Rock Island, IL, 61299-6000. A reply will be furnished to you.

**TABLE OF CONTENTS**

		Page	Illus Figure
Section	I. INTRODUCTION .....	1	
Section	II. REPAIR PARTS LIST .....	1-1	
Group	00 Rifle, recoilless, 106-mm M40A2 11578739 and rifle, recoilless, 106-mm M40A4 11578740 .....	1-1	1
Group	01 Gun spotting, caliber .50: M8C 7268115 .....	2-1	2
	0101 Bolt assembly 7266341 .....	3-1	3
	0104 Firing mechanism assembly 7268119 .....	4-1	4
Group	02 Telescope, elbow: M92F 8286960 .....	5-1	5
Group	04 Cannon, 106-mm, M206 11578014 and 0405 hinge assembly 7308856 .....	6-1	6
Group	04 Cannon, 106-mm, M206 11578014 and 0406 vent assembly 7309187 .....	7-1	7
Group	04 Cannon, 106-mm, M206 11578014 .....	8-1	8
	0401 Cartridge case detent assembly 7230797 .....	9-1	9
	0403 Breechblock operating lever 7307520 .....	10-1	10
	0404 Lanyard rod assembly 7307472 .....	11-1	11
Group	13 Artillery cleaning brush .....	12-1	12

\*This manual supersedes TM 9-1015-221-20P, dated 27 June 1969, including all changes.

TABLE OF CONTENTS

		Page	Illus Figure
Section III.	SPECIAL TOOLS LIST .....	13-1	
Group 9500	Special tools .....	13-1	13
Section IV.	NATIONAL STOCK NUMBER AND PART NUMBER INDEX .....	I-1	

# ORGANIZATIONAL, MAINTENANCE REPAIR PARTS AND SPECIAL TOOLS LIST

## Section I. INTRODUCTION

**1. SCOPE.** This RPSTL lists and authorizes spares and repair parts; special tools; special test, measurement, and diagnostic equipment (TMDE); and other special support equipment required for performance of organizational maintenance of the 106-MM recoilless rifle. It authorizes the requisitioning, issue, and disposition of spares, repair parts and special tools indicated by the Source, Maintenance and Recoverability (SMR) codes.

**2. GENERAL.** In addition to Section I, Introduction, this Repair Parts and Special Tools List is divided into the following sections:

a. *Section II. Repair Parts List.* A list of spares and repair parts authorized by this RPSTL for use in the performance of maintenance. The list also includes parts which must be removed for replacement of the authorized parts. Parts lists are composed of functional groups in ascending alphanumeric sequence, with the parts in each group listed in ascending figure and item number sequence. Bulk materials are listed in item name sequence. Repair parts kits are listed separately in their own functional group within section II. Repair parts for repairable special tools are also listed in this section. Items listed are shown on the associated illustration(s)/figure(s).

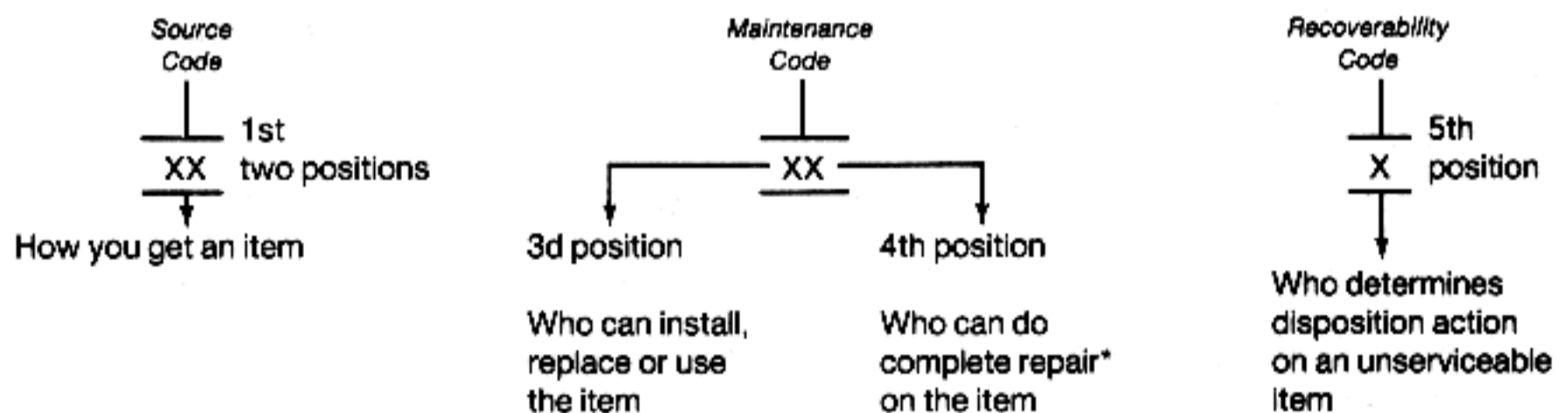
b. *Section III. Special Tools List.* A list of special tools, special TMDE, and other special support equipment authorized by this RPSTL (as indicated by Basis of Issue (BOI) information in DESCRIPTION AND USABLE ON CODE column) for the performance of maintenance.

c. *Section IV. National Stock Number and Part Number Index.* A list, in National Item identification number (NIIN) sequence, of all National stock numbered items appearing in the listing, followed by a list in alphanumeric sequence of all part numbers appearing in the listings. National stock numbers and part numbers are cross-referenced to each illustration figure and item number appearance.

### 3. EXPLANATION OF COLUMNS (SECTIONS II AND III).

a. *ITEM NO. (Column (1)).* Indicates the number used to identify items called out in the illustration.

b. *SMR CODE (Column (2)).* The Source, Maintenance, and Recoverability (SMR) code is a 5-position code containing supply/requisitioning information, maintenance category authorization criteria, and disposition instruction, as shown in the following breakout:



\*Complete Repair: Maintenance capacity, capability, and authority to perform all corrective maintenance tasks of the "Repair" function in a use/user environment in order to restore serviceability to a failed item.

(1) Source code. The source code tells you how you get an item needed for maintenance, repair, or overhaul of an end item/equipment. Explanations of source codes follow:

Code	Explanation
PA PB PC** PD PE PF PG	Stocked items; use the applicable NSN to request/requisition items with these source codes. They are authorized to the category indicated by the code entered in the 3d position of the SMR code.  **NOTE: Items coded PC are subject to deterioration.
KD KF KB	Items with these codes are not to be requested/requisitioned individually. They are part of a kit which is authorized to the maintenance category indicated in the 3d position of the SMR code. The complete kit must be requisitioned and applied.
MO-(Made at org/ AVUM Level) MF-(Made at DS/ AVIM Level) MH-(Made at GS Level) ML-(Made at Specialized Repair Act (SRA) MD-(Made at Depot)	Items with these codes are not to be requested/requisitioned individually. They must be made from bulk material which is identified by the part number in the DESCRIPTION AND USABLE ON CODE (UOC) column and listed in the bulk material group in the repair parts list in this RPSTL. If the item is authorized to you by the 3d position code of the SMR code, but the source code indicates it is made at a higher level, order the item from the higher level of maintenance.
AO-(Assembled by org/AVUM Level) AF-(Assembled by DS/AVIM Level) AH-(Assembled by GS Level) AL-(Assembled by SRA) AD-(Assembled by Depot)	Items with these codes are not to be requested/requisitioned individually. The parts that make up the assembled item must be requisitioned or fabricated and assembled at the level of maintenance indicated by the source code. If the 3d position code of the SMR code authorizes you to replace the item, but the source code indicates the item is assembled at a higher level, order the item from the higher level of maintenance.
XA -	Do not requisition an "XA" -coded item. Order its next higher assembly. (Also, refer to the NOTE below.)
XB -	If an "XB" item is not available from salvage, order it using the FSCM and part number given.
XC -	Installation drawing, diagram, instruction sheet, field service drawing, that is identified by manufacturer's part number.
XD -	Item is not stocked. Order an "XD" -coded item through normal supply channels using the FSCM and part number given, if no NSN is available.

**NOTE**

Cannibalization or controlled exchange, when authorized, may be used as a source of supply for items with the above source codes, except for those source coded "XA" or those aircraft support items restricted by requirements of AR 700-42.

# ORGANIZATIONAL, MAINTENANCE REPAIR PARTS AND SPECIAL TOOLS LIST

## Section I. INTRODUCTION

**1. SCOPE.** This RPSTL lists and authorizes spares and repair parts; special tools; special test, measurement, and diagnostic equipment (TMDE); and other special support equipment required for performance of organizational maintenance of the 106-MM recoilless rifle. It authorizes the requisitioning, issue, and disposition of spares, repair parts and special tools indicated by the Source, Maintenance and Recoverability (SMR) codes.

**2. GENERAL.** In addition to Section I, Introduction, this Repair Parts and Special Tools List is divided into the following sections:

a. *Section II. Repair Parts List.* A list of spares and repair parts authorized by this RPSTL for use in the performance of maintenance. The list also includes parts which must be removed for replacement of the authorized parts. Parts lists are composed of functional groups in ascending alphanumeric sequence, with the parts in each group listed in ascending figure and item number sequence. Bulk materials are listed in item name sequence. Repair parts kits are listed separately in their own functional group within section II. Repair parts for repairable special tools are also listed in this section. Items listed are shown on the associated illustration(s)/figure(s).

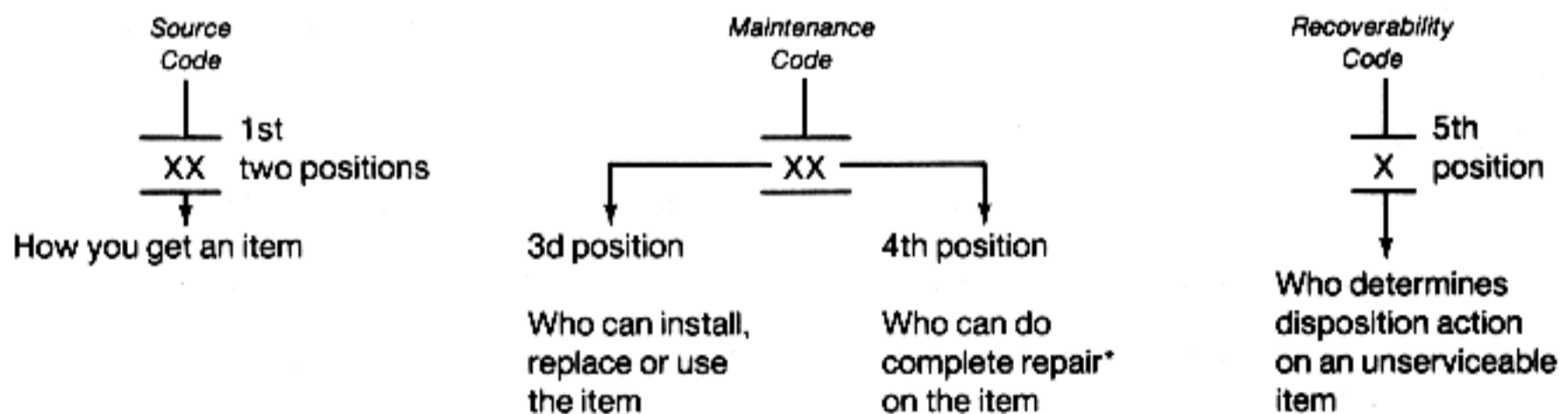
b. *Section III. Special Tools List.* A list of special tools, special TMDE, and other special support equipment authorized by this RPSTL (as indicated by Basis of Issue (BOI) information in DESCRIPTION AND USABLE ON CODE column) for the performance of maintenance.

c. *Section IV. National Stock Number and Part Number Index.* A list, in National item identification number (NIIN) sequence, of all National stock numbered items appearing in the listing, followed by a list in alphanumeric sequence of all part numbers appearing in the listings. National stock numbers and part numbers are cross-referenced to each illustration figure and item number appearance.

### 3. EXPLANATION OF COLUMNS (SECTIONS II AND III).

a. *ITEM NO. (Column (1)).* Indicates the number used to identify items called out in the illustration.

b. *SMR CODE (Column (2)).* The Source, Maintenance, and Recoverability (SMR) code is a 5-position code containing supply/requisitioning information, maintenance category authorization criteria, and disposition instruction, as shown in the following breakout:



\*Complete Repair: Maintenance capacity, capability, and authority to perform all corrective maintenance tasks of the "Repair" function in a use/user environment in order to restore serviceability to a failed item.

(2) **Maintenance code.** Maintenance codes tell you the level(s) of maintenance authorized to USE and REPAIR support items. The maintenance codes are entered in the third and fourth positions of the SMR code as follows:

(a) The maintenance code entered in the third position tells you the lowest maintenance level authorized to remove, replace, and use an item. The maintenance code entered in the third position will indicate authorization to one of the following levels of maintenance:

<i>Code</i>	<i>Application/Explanation</i>
C	Crew or operator maintenance done within organizational or aviation unit maintenance.
O	Organizational or aviation unit category can remove, replace, and use the item.
F	Direct support or aviation intermediate level can remove, replace, and use the item.
H	General support level can remove, replace, and use the item.
L	Specialized repair activity can remove, replace, and use the item.
D	Depot level can remove, replace, and use the item.

(b) The maintenance code entered in the fourth position tells you whether or not the item is to be repaired and identifies the lowest maintenance level with the capability to do complete repair (i.e., perform all authorized repair functions).

#### **NOTE**

Some limited repair may be done on the item at a lower level of maintenance, if authorized by the Maintenance Allocation Chart (MAC) and SMR codes.

This position will contain one of the following maintenance codes:

<i>Code</i>	<i>Application/Explanation</i>
O	Organizational or aviation unit is the lowest level that can do complete repair of the item.
F	Direct support or aviation intermediate is the lowest level that can do complete repair of the item.
H	General support is the lowest level that can do complete repair of the item.
L	Specialized repair activity (designate the specialized repair activity) is the lowest level that can do complete repair of the item.
D	Depot is the lowest level that can do complete repair of the item.
Z	Nonreparable. No repair is authorized.
B	No repair is authorized. No parts or special tools are authorized for the maintenance of a "B" coded item. However, the item may be reconditioned by adjusting, lubricating, etc., at the user level.

(3) **Recoverability code.** Recoverability codes are assigned to items to indicate the disposition action on unserviceable items. The recoverability code is entered in the fifth position of the SMR code as follows:

<i>Recoverability Codes</i>	<i>Application/Explanation</i>
Z	- Nonreparable item. When unserviceable, condemn and dispose of the item at the level of maintenance shown in 3d position of SMR code.
O	- Reparable item. When uneconomically reparable, condemn and dispose of the item at organizational or aviation unit level.
F	- Reparable item. When uneconomically reparable, condemn and dispose of the item at the direct support or aviation intermediate level.
H	- Reparable item. When uneconomically reparable, condemn and dispose of the item at the general support level.
D	- Reparable item. When beyond lower level repair capability, return to depot. Condemnation and disposal of item not authorized below depot level.
L	- Reparable item. Condemnation and disposal not authorized below specialized repair activity (SRA).
A	- Item requires special handling or condemnation procedures because of specific reasons (e.g., precious metal content, high dollar value, critical material, or hazardous material). Refer to appropriate manuals/directives for specific instructions.

c. **FSCM (Column (3)).** The Federal Supply Code for Manufacturer (FSCM) is a 5-digit numeric code which is used to identify the manufacturer, distributor, or Government agency, etc., that supplies the item.

d. **PART NUMBER (Column (4)).** Indicates the primary number used by the manufacturer (individual, company, firm, corporation, or Government activity), which controls the design and characteristics of the item by means of its engineering drawings, specifications standards, and inspection requirements to identify an item or range of items.

**NOTE**

When you use an NSN to requisition an item, the item you receive may have a different part number from the part ordered.

e. **DESCRIPTION AND USABLE ON CODE (UOC) (Column (5)).** This column includes the following information:

- (1) The Federal item name and, when required, a minimum description to identify the item.
- (2) Spare/repair parts that make up an assembled item are listed immediately following the assembled item line entry or reference is made to the applicable figure.
- (3) In the Special Tools List section, the basis of issue (BOI) appears as the last line(s) in the entry for each special tool, special TMDE, and other special support equipment. When density of equipments supported exceeds density spread indicated in the basis of issue, the total authorization is increased proportionately.
- (4) The statement "END OF FIGURE" appears just below the last item description in column 5 for a given figure in both section II and section III.

f. **QTY (Column (6)).** The QTY (quantity per figure column) indicates the quantity of the item used in the breakout shown on the illustration figure, which is prepared for a functional group, subfunctional group, or an assembly. A "V" appearing in this column in lieu of a quantity indicates that the quantity is variable and the quantity may vary from application to application.



**4. EXPLANATION OF COLUMNS (SECTION IV).****a. NATIONAL STOCK NUMBER (NSN) INDEX.**

(1) **STOCK NUMBER** column. This column lists the NSN by National item identification number

(NIIN) sequence. The NIIN consists of the last nine digits of the NSN (i.e.,  $\frac{5385-01-574-1476}{\text{NIIN}}$ ).

When using this column to locate an item, ignore the first 4 digits of the NSN. However, the complete NSN should be used when ordering items by stock number.

(2) **FIG.** column. This column lists the number of the figure where the item is identified/located. The figures are in numerical order in section II and section III.

(3) **ITEM** column. The item number identifies the item associated with the figure listed in the adjacent FIG. column. This item is also identified by the NSN listed on the same line.

**b. PART NUMBER INDEX.** Part numbers in this index are listed by part number in ascending alphanumeric sequence (i.e., vertical arrangement of letter and number combination which places the first letter or digit of each group in order A through Z, followed by the numbers 0 through 9 and each following letter or digit in like order).

(1) **FSCM** column. The Federal Supply Code for Manufacturer (FSCM) is a 5-digit numeric code used to identify the manufacturer, distributor, or Government agency, etc., that supplies the item.

(2) **PART NUMBER** column. Indicates the primary number used by the manufacturer (individual, firm, corporation, or Government activity), which controls the design and characteristics of the item by means of its engineering drawings, specifications standards, and inspection requirements to identify an item or range of items.

(3) **STOCK NUMBER** column. This column lists the NSN for the associated part number and manufacturer identified in the PART NUMBER and FSCM columns to the left.

(4) **FIG.** column. This column lists the number of the figure where the item is identified/located in sections II and III.

(5) **ITEM** column. The item number is that number assigned to the item as it appears in the figure referenced in the adjacent figure number column.

**5. SPECIAL INFORMATION.**

**a. Assembly Instructions.** Detailed assembly instructions for items source coded to be assembled from component spare/repair parts are found in TM 9-1015-221-12. Items that make up the assembly are listed immediately following the assembly item entry or reference is made to an applicable figure.

**b. Associated Publications.** The publication(s) listed below pertain to the 106-MM recoilless rifle and its components:

<i>Publication</i>	<i>Short Title</i>
LO 9-1015-221-12	Rifle, Recoilless, 106-MM: M40A2 and M40A4
TM 9-1015-221-12	Rifle, Recoilless, 106-MM: M40A2 and M40A4
TM 9-1015-221-34	Rifle, Recoilless, 106-MM: M40A2 and M40A4
TM 9-1015-221-34P	Rifle, Recoilless, 106-MM: M40A2 and M40A4

**c. Illustrations - Listing.** The illustrations in this RPSTL are identical to those published in TM 9-1015-221-34P. Only those parts codes "C" or "O" in the third position of the SMR code are listed in the tabular listing; therefore, there may be a break in the item number sequence. Only illustrations containing organizational or aviation unit authorized items appear in this RPSTL.

## 6. HOW TO LOCATE REPAIR PARTS.

### a. *When National Stock Number or Part Number is Not Known:*

- (1) First. Using the table of contents, determine the assembly group or subassembly group to which the item belongs. This is necessary since figures are prepared for assembly groups and subassembly groups, and listings are divided into the same groups.
- (2) Second. Find the figure covering the functional group or subfunctional group to which the item belongs.
- (3) Third. Identify the item on the figure and note the item number.
- (4) Fourth. Refer to the Repair Parts List for the figure to find the part number for the item number noted on the figure.
- (5) Fifth. Refer to the Part Number Index to find the NSN, if assigned.

### b. *When National Stock Number or Part Number is Known:*

- (1) First. Using the index of National stock numbers and part numbers, find the pertinent National stock number or part number. The NSN index is in National Item Identification Number (NIIN) sequence (see 4a(1)). The part numbers in the PART NUMBER INDEX are listed in ascending alphanumeric sequence (see 4b). Both indexes cross-reference you to the illustration figure and item number of the item you are looking for.
- (2) Second. After finding the figure and item number, verify that the item is the one you're looking for, then locate the item number in the repair parts list for the figure.

## 7. ABBREVIATIONS. Not applicable.

## Section II. REPAIR PARTS LIST

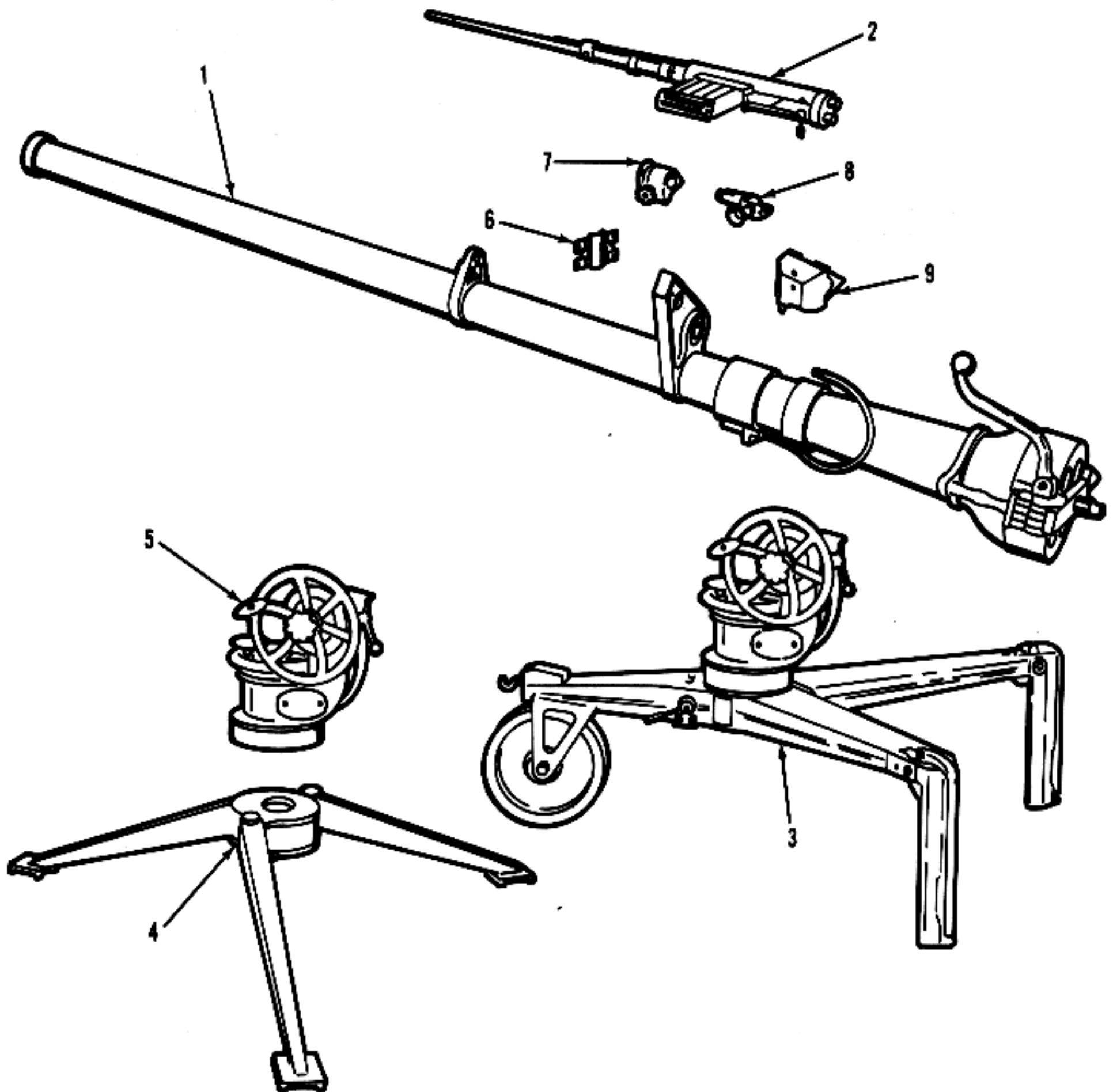


Figure 1. Rifle, Recoilless, 106-MM: M40A2 or M40A4.

(1) ITEM NO	(2) SMR CODE	(3) FSCM	(4) PART NUMBER	(5) DESCRIPTION AND USABLE ON CODES(UOC)	(6) QTY
-------------------	--------------------	-------------	-----------------------	---	------------

GROUP OO RIFLE, RECOILLESS, 106-MM:  
M40A2 (11578739) OR M40A4 (11578740)

FIG. 1 RIFLE, RECOILLESS, 106MM:  
M40A2 OR M40A4

6	PACFF	19200	8299677	CLAMP.....	1
7	PACDD	19200	8299670	MOUNT TELESCOPE, M90.....	1
8	PACDD	19200	8286960	TELESCOPE, ELBOW, M92F.....	1
9	PACFF	19200	8293769	COVER.....	1

END OF FIGURE

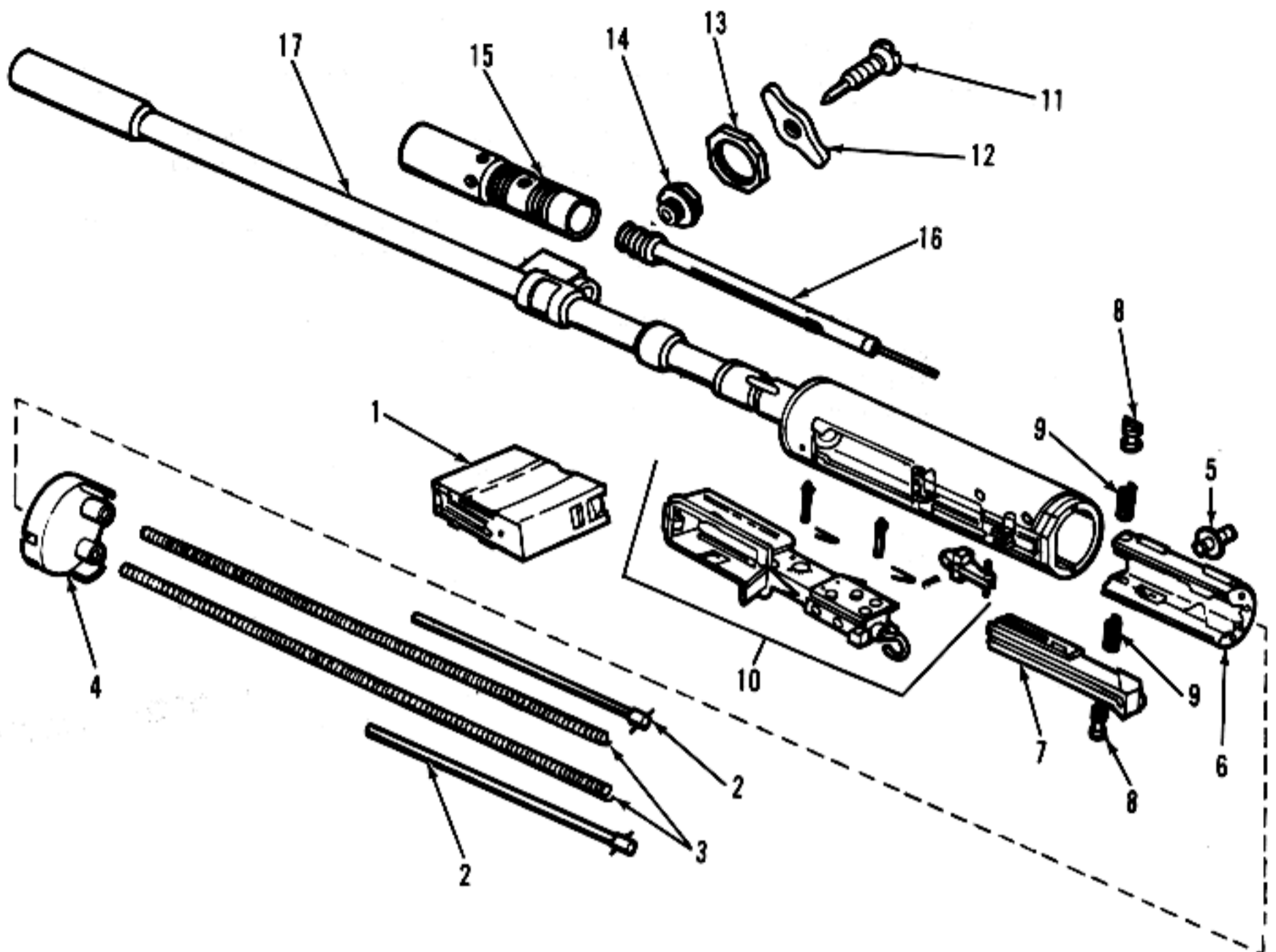


Figure 2. Gun, Spotting, Caliber 50: M80.

(1) ITEM NO	(2) SMR CODE	(3) FSCM	(4) PART NUMBER	(5) DESCRIPTION AND USABLE ON CODES(UOC)	(6) QTY
-------------------	--------------------	-------------	-----------------------	---	------------

GROUP 01 GUN, SPOTTING, CALIBER .50:  
M80 (7268115)

FIG.2 GUN, SPOTTING,  
CALIBER .50: M80

1	PAOZZ	19204	12003046	MAGAZINE, CARTRIDGE.....	1
2	PAOZZ	19204	7267851	ROD, GUIDE ASSEMBLY.....	2
3	PACZZ	19204	7791229	SPRING, HELICAL COMPRESSION.....	2
7	AFOFF	19204	7266341	BOLT, ASSEMBLY (SEE FIG. 3 FOR ASSEMBLY BREAKDOWN).....	1
8	PACZZ	19204	7268393	GUIDE, BOLT RECEIVER.....	2
9	PACZZ	19204	7266415	SPRING, HELICAL COMPRESSION.....	2

END OF FIGURE

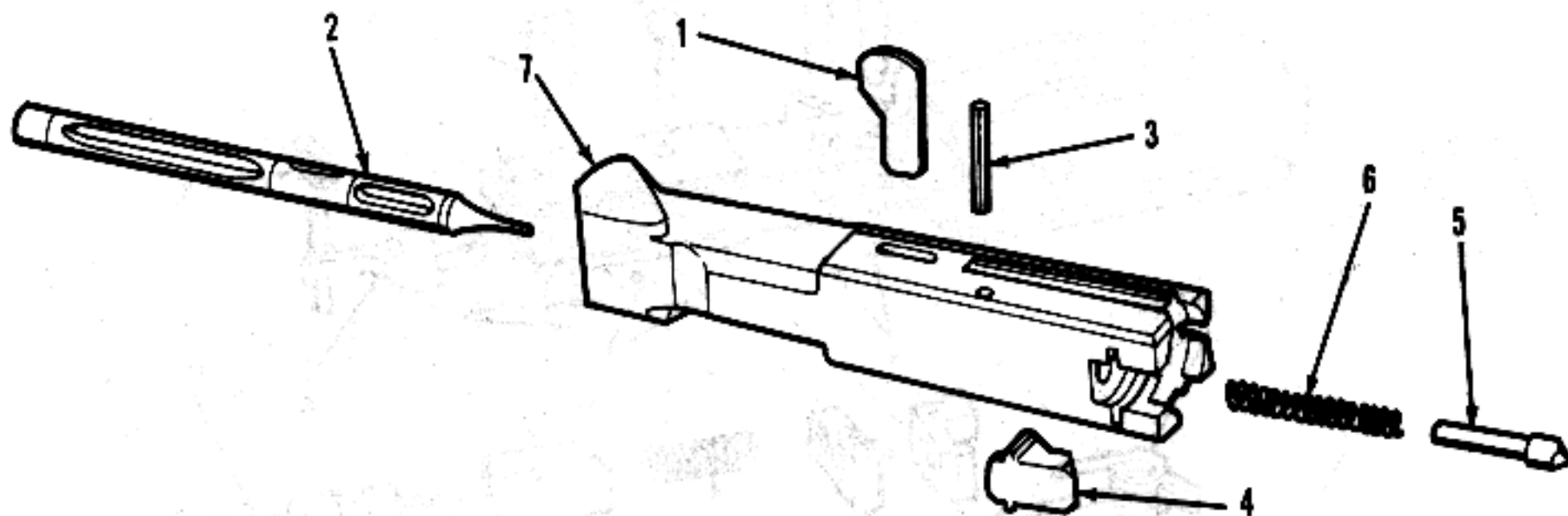


Figure 3. Bolt Assembly.

(1) ITEM NO	(2) SMR CODE	(3) FSCM	(4) PART NUMBER	(5) DESCRIPTION AND USABLE ON CODES(UOC)	(6) QTY
-------------------	--------------------	-------------	-----------------------	---	------------

GROUP 0101 BOLT ASSEMBLY (7266341)

FIG.3 BOLT ASSEMBLY

1	PACZZ	19204	7266400	RETRACTOR, FIRING PIN.....	1
2	PACZZ	19204	7266374	PIN, FIRING.....	1
3	PACZZ	96906	MS16562-131	PIN, SPRING.....	1
4	PACZZ	19204	7266357	EXTRACTOR, CARTRIDGE.....	1
5	PACZZ	19204	7266393	PLUNGER, EXTRACTOR.....	1
6	PACZZ	19204	7266416	SPRING, HELICAL COMPRESSION.....	1

END OF FIGURE

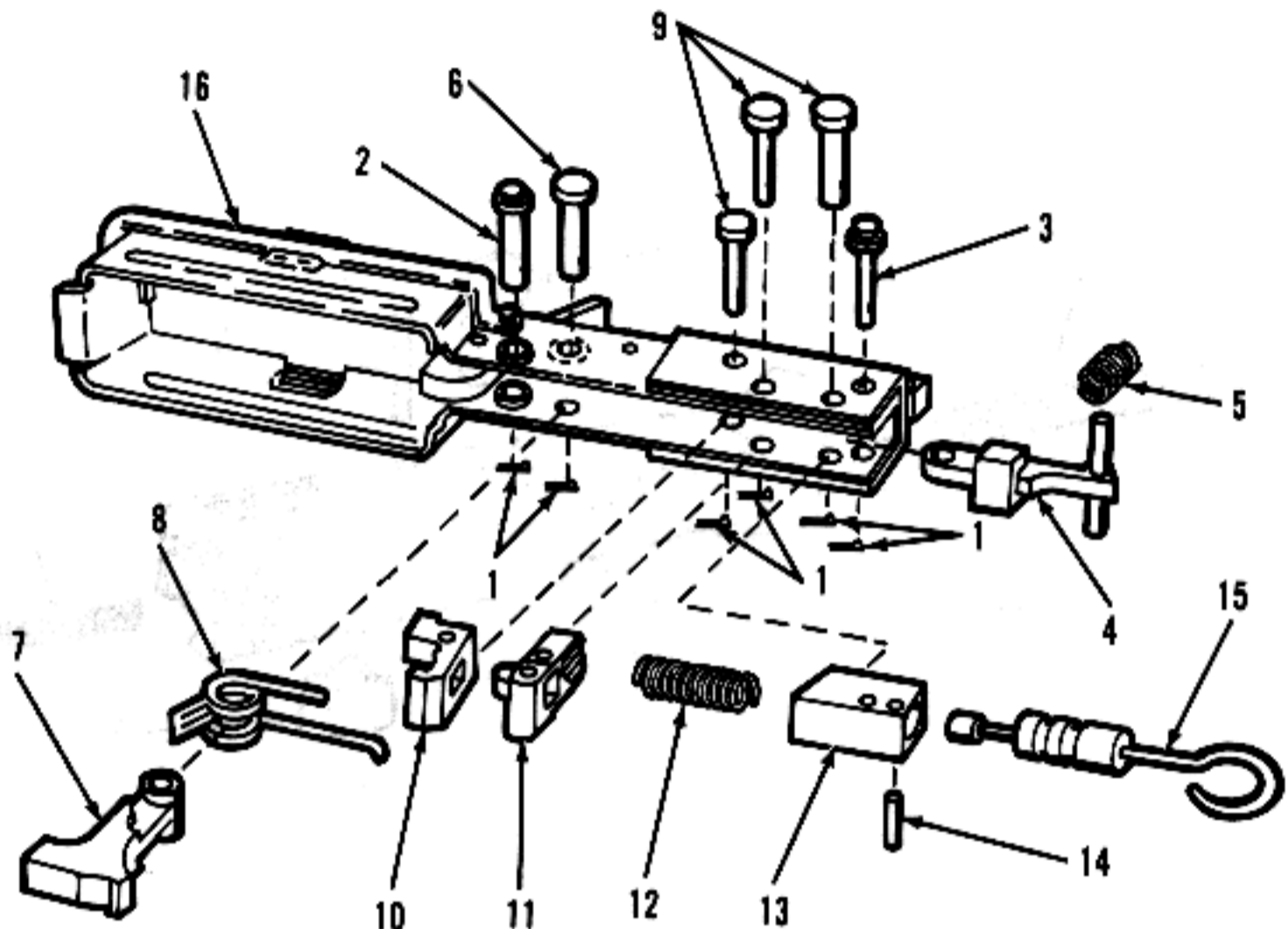


Figure 4. Firing Mechanism Assembly.

(1) ITEM NO	(2) SMR CODE	(3) FSCM	(4) PART NUMBER	(5) DESCRIPTION AND USABLE ON CODES(UOC)	(6) QTY
-------------------	--------------------	-------------	-----------------------	---	------------

GROUP 0104 FIRING MECHANISM ASSEMBLY  
(7268119)

FIG. 4 FIRING MECHANISM ASSEMBLY

1	PACZZ	96906	MS24665-814	PIN, COTTER.....	6
14	PAOZZ	96906	MS16562-120	PIN, SPRING.....	1
15	PAOZZ	19204	7266561	ROD, FIRING ASSEMBLY.....	1

END OF FIGURE

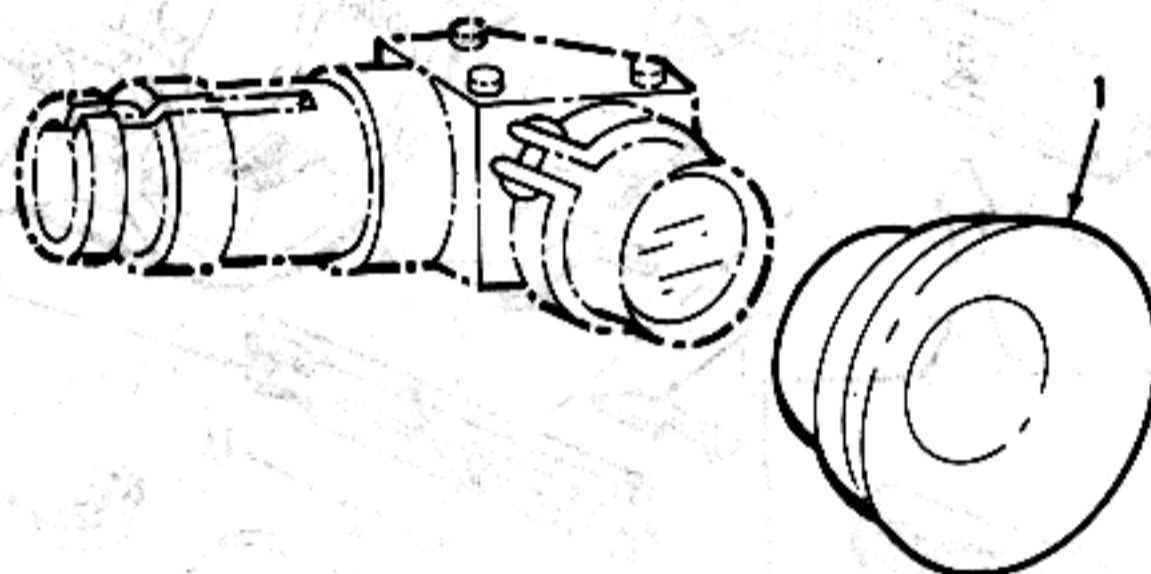


Figure 5. Telescope, Elbow: M92F.

(1) ITEM NO	(2) SMR CODE	(3) FSCM	(4) PART NUMBER	(5) DESCRIPTION AND USABLE ON CODES(UCC)	(6) QTY
-------------------	--------------------	-------------	-----------------------	---	------------

GROUP 02 TELESCOPE, ELBOW: M92F  
(8286960)

FIG. 5 TELESCOPE, ELBOW: M92F

1 PA0ZZ 19200 8228878

EYE SHIELD.....

END OF FIGURE



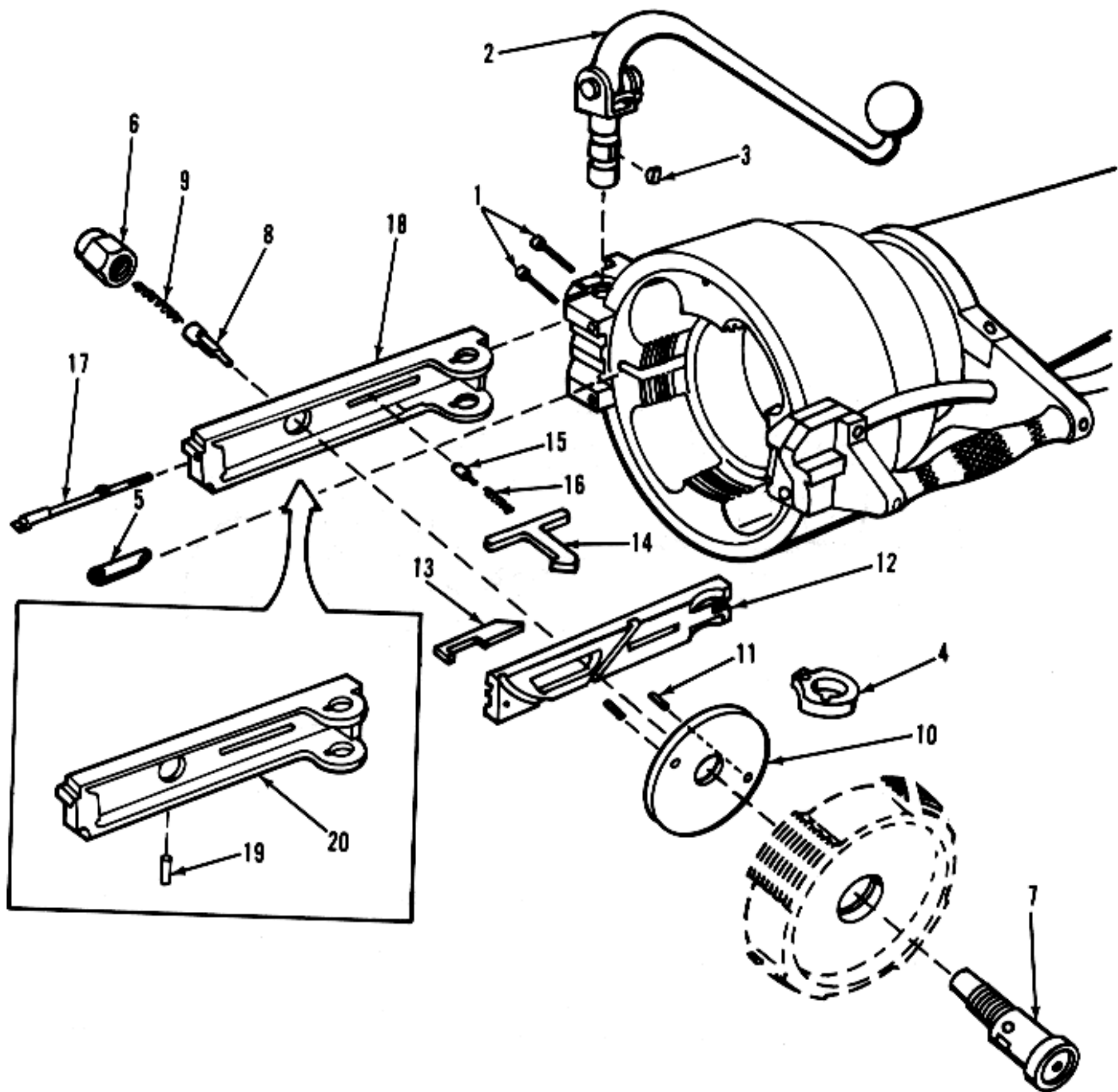


Figure 6. Cannon, 106-MM: M206 and Hinge Assembly.

(1) ITEM NO	(2) SMR CODE	(3) FSCM	(4) PART NUMBER	(5) DESCRIPTION AND USABLE ON CODES(UCC)	(6) QTY
-------------------	--------------------	-------------	-----------------------	---	------------

GROUP 04 CANNON, 106-MM: M206  
(11578014) AND  
GROUP 0405 HINGE ASSEMBLY  
(7308856)

FIG. 6 CANNON, 106-MM: M206 AND  
HINGE ASSEMBLY

1	PA0ZZ	96906	MS16998-50	SCREW, CAP, SOCKET HEAD.....	2
2	A0000	19206	7307520	LEVER, BREECHBLOCK OPERATING (SEE FIG. 10 FOR ASSEMBLY BREAKDOWN).....	1
3	PACZZ	96906	MS35756-6	KEY, WOODRUFF.....	1
4	PA0FF	19206	8766017	DOG ASSEMBLY.....	1
5	PAC00	19206	7230797	DETENT ASSEMBLY.....	1
7	PA0ZZ	19206	8766068	HOUSING.....	1
8	PACZZ	19206	11578018	PIN, FIRING.....	1
9	PACZZ	19206	7230810	SPRING, HELICAL, COMPRESSION.....	1
11	PACZZ	19206	7230807	ROLLER, BEARING.....	2
13	PACZZ	19206	11578017	CAM, CONTROL.....	1
14	PACZZ	19206	7230799	EXTRACTOR, CARTRIDGE.....	1
15	PA0ZZ	19206	11578301	PLUNGER, DETENT.....	1
16	PA0ZZ	19206	7230809	SPRING, HELICAL COMPRESSION.....	1
17	PACZZ	19206	11578019	SEAR.....	1

END OF FIGURE

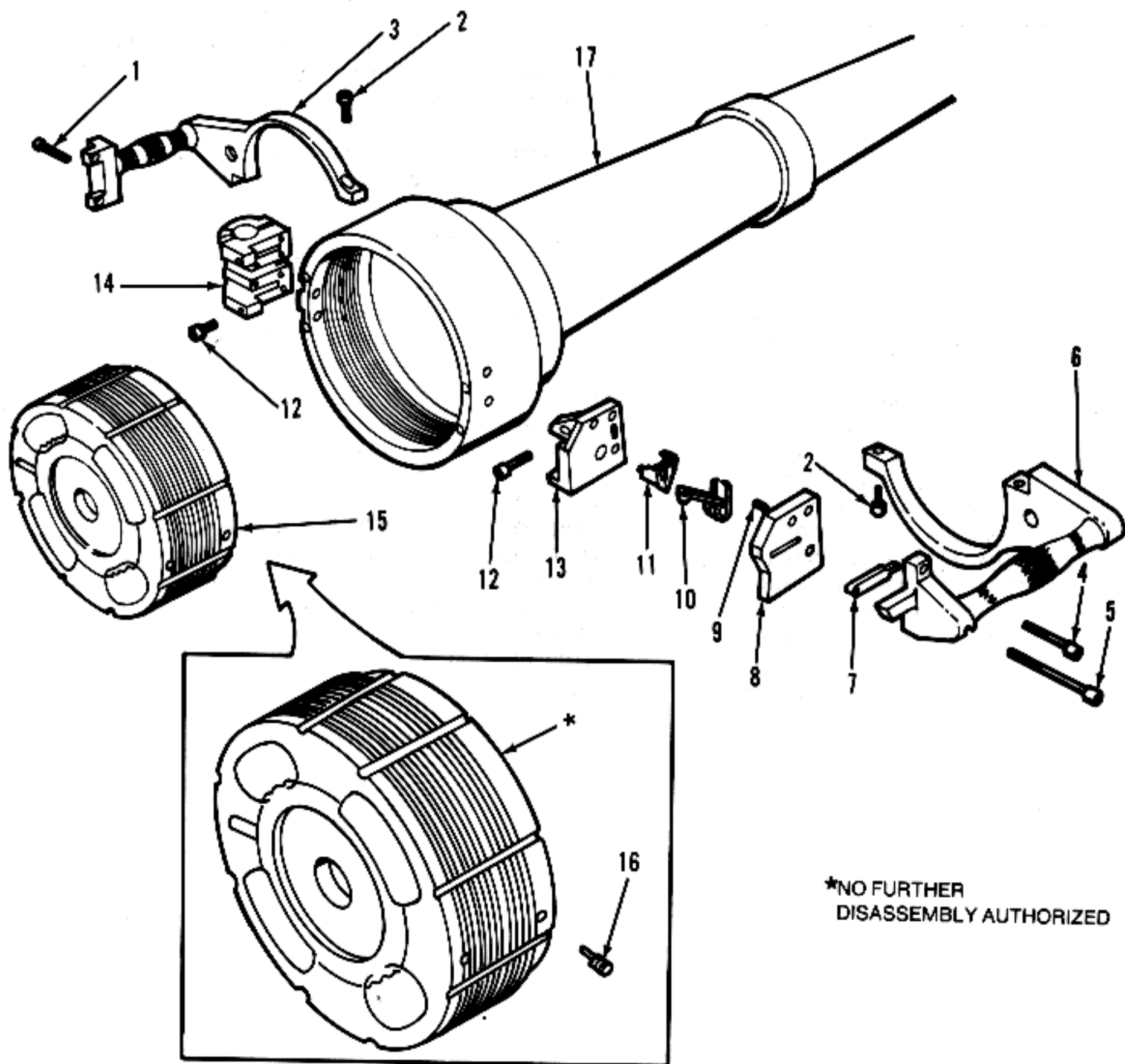


Figure 7. Cannon, 106-MM: M206 and Vent Assembly.

(1) ITEM NO	(2) SMR CODE	(3) FSCM	(4) PART NUMBER	(5) DESCRIPTION AND USABLE ON CODES(UOC)	(6) QTY
GROUP 04 CANNON, 106-MM: M206 (11578014) AND GROUP 0406 VENT ASSEMBLY (7309187)					
FIG. 7 CANNON, 106-MM: M206 AND VENT ASSEMBLY					
1	PA0ZZ	96906	MS16998-50	SCREW, CAP, SOCKET HEAD.....	4
2	PA0ZZ	96906	MS16998-74	SCREW, CAP, SOCKET HEAD.....	2
4	PA0ZZ	96906	MS16998-47	SCREW, CAP, SOCKET HEAD.....	1
5	PA0ZZ	19203	9406768	SCREW, CAP, SOCKET HEAD.....	1
7	PA000	19206	7307472	ROD LANYARD ASSEMBLY.....	1
8	PA0ZZ	19206	7307503	COVER TRIGGER.....	1
9	PA0ZZ	96906	MS16562-49	PIN, SPRING.....	1
10	PA0ZZ	19206	11578016	SPRING, HELICAL TORSION.....	1
11	PA0ZZ	19206	11578015	TRIGGER.....	1
12	PA0ZZ	96906	MS16998-45	SCREW, CAP, SOCKET HEAD.....	4
13	PA0ZZ	19206	7307502	HOUSING, TRIGGER.....	1
15	PA000	19206	7309187	VENT ASSEMBLY.....	1
16	PA0ZZ	19206	7309107	..SETSCREW.....	1

END OF FIGURE

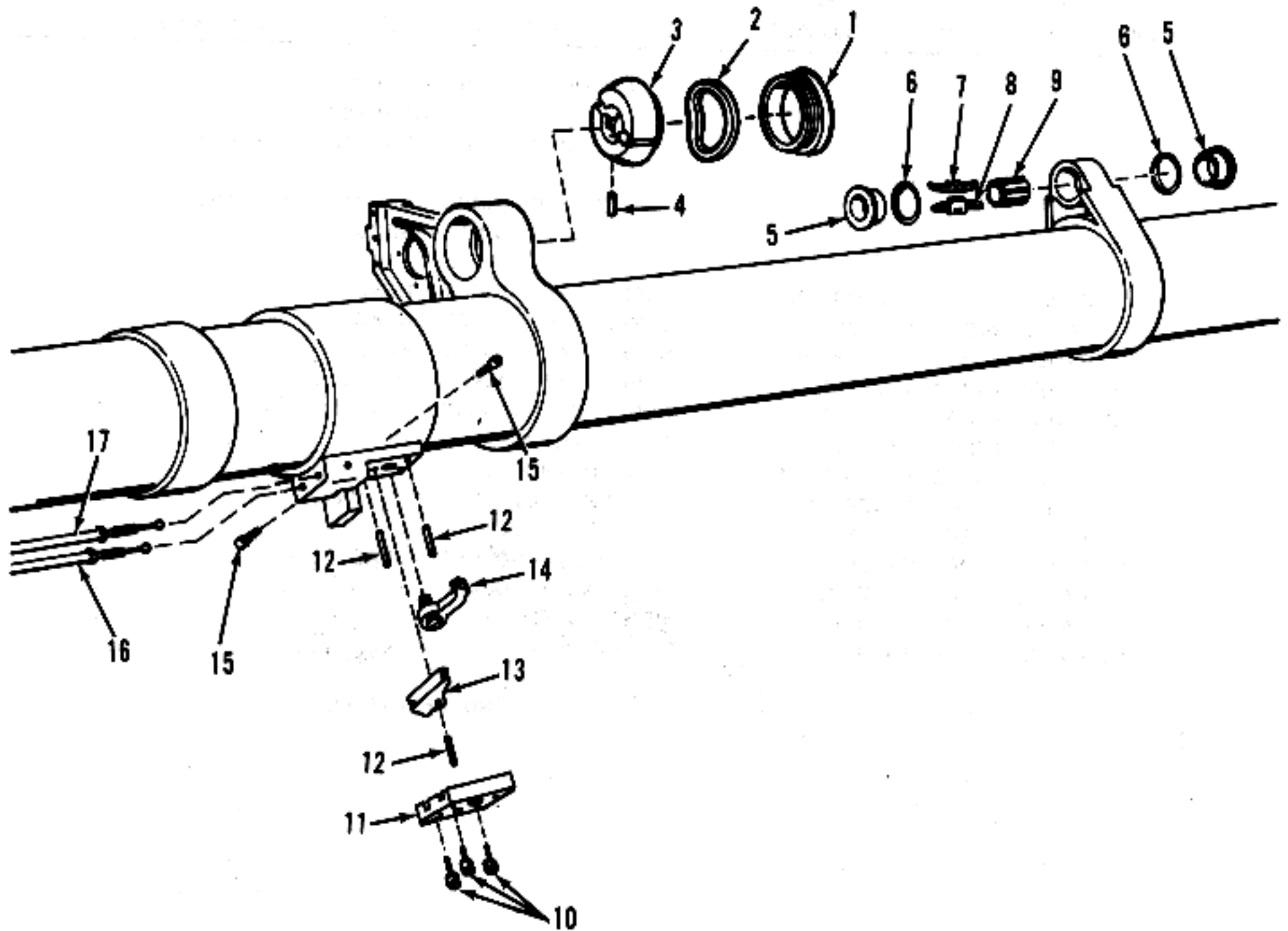


Figure 8. Cannon, 106-MM: M206.

(1) ITEM NO	(2) SMR CODE	(3) FSCM	(4) PART NUMBER	(5) DESCRIPTION AND USABLE ON CODES(UOC)	(6) QTY
-------------------	--------------------	-------------	-----------------------	---	------------

GROUP 04 CANNON, 106-MM: M206  
(11578014)

FIG. 8 CANNON, 106-MM: M206

10	PA0ZZ	96906	MS16997-58	SCREW,CAP, SOCKET HEAD.....	3
11	PA0ZZ	19206	7307512	COVER,QUICK BREAKDOWN.....	1
15	PA0ZZ	19206	7307478	SETSCREW.....	2
16	PA0ZZ	19206	11578002	CABLE .50 CALIBER SPOTTING GUN.....	1
17	PA0ZZ	19206	11577981	CABLE,FIRING, 106MM RECOILLESS RIFLE.....	1

END OF FIGURE

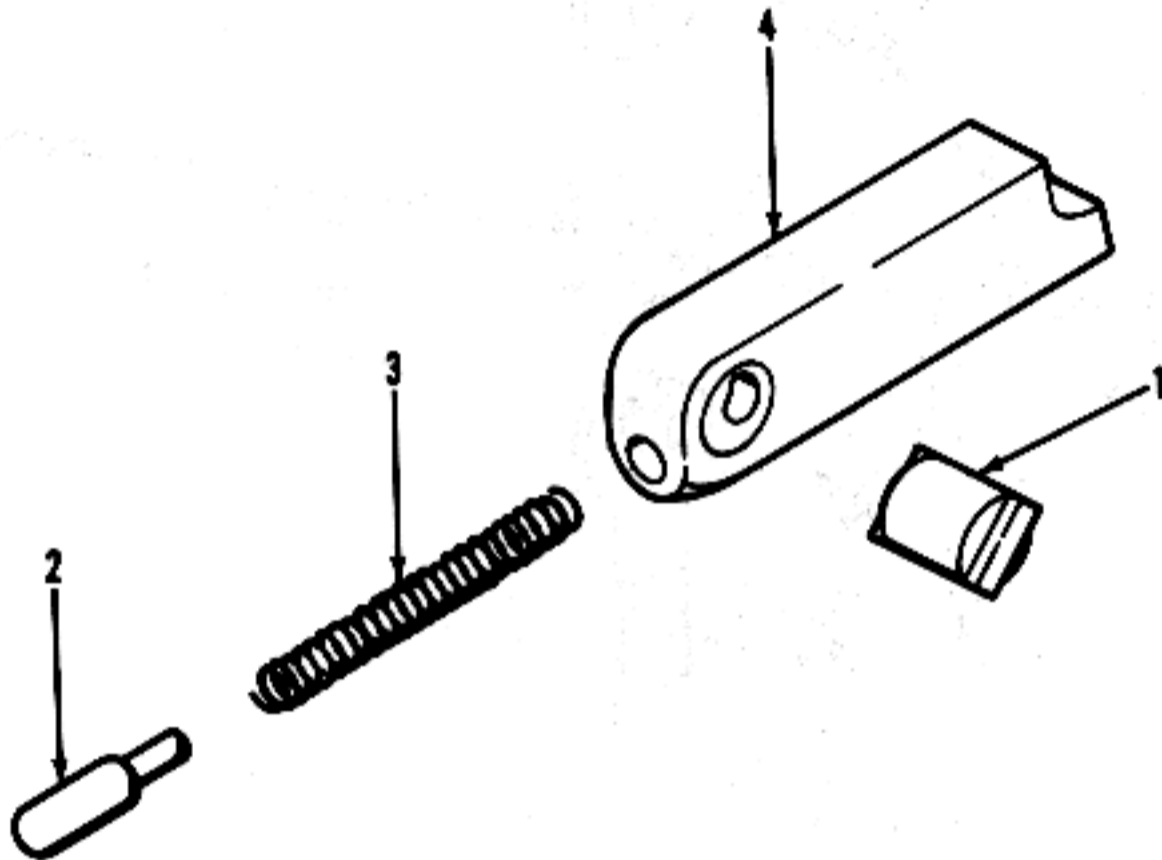


Figure 9. Detent Assembly, Cartridge Case.

(1) ITEM NO	(2) SMR CODE	(3) FSCM	(4) PART NUMBER	(5) DESCRIPTION AND USABLE ON CODES(UCC)	(6) QTY
-------------------	--------------------	-------------	-----------------------	---	------------

GROUP 0401 DETENT ASSEMBLY,  
CARTRIDGE CASE (7230797)

FIG. 9 DETENT ASSEMBLY,  
CARTRIDGE CASE

1	PAOZZ	19206	7230800	FULCRUM.....	1
2	PAOZZ	19206	11578301	PLUNGER, DETENT.....	1
3	PACZZ	19206	7230809	SPRING, HELICAL COMPRESSION.....	1
4	XAOZZ	19204	7230794	BODY, CARTRIDGE, CASE.....	1

END OF FIGURE

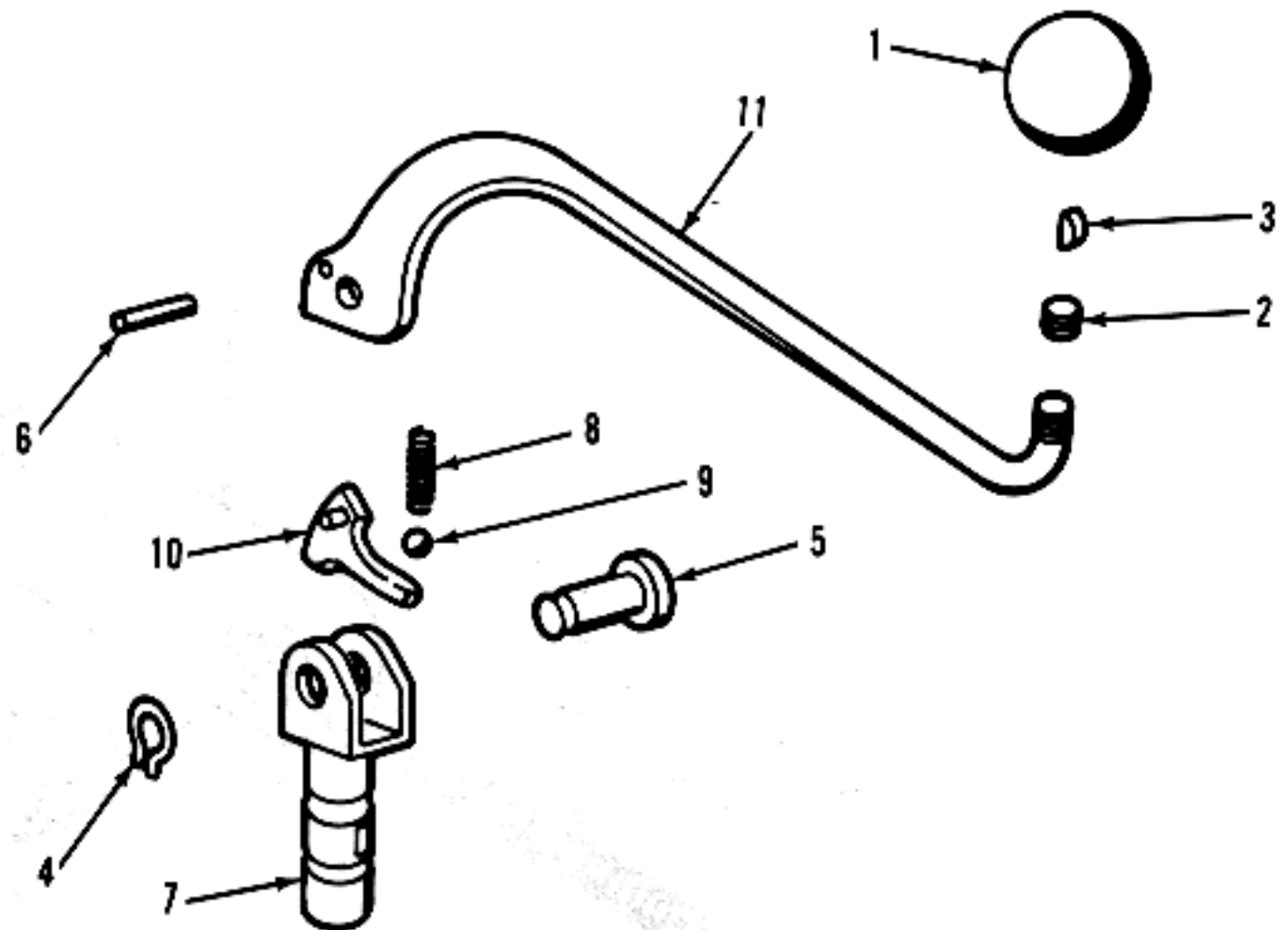


Figure 10. Breechblock Operating Lever.

(1) ITEM NO	(2) SMR CODE	(3) FSCM	(4) PART NUMBER	(5) DESCRIPTION AND USABLE ON CODES (UCC)	(6) QTY
-------------------	--------------------	-------------	-----------------------	--	------------

GROUP 0403 BREECHBLOCK OPERATING  
LEVER (7307520)

FIG. 10 BREECHBLOCK OPERATING LEVER

1	PA0ZZ	19206	7307477	BALL BREECH BLOCK.....	1
2	PA0ZZ	88044	AN565D820H6	SETSCREW.....	1
3	PACZZ	96906	MS35756-6	KEY, WOODRUFF.....	1
4	PA0ZZ	96906	MS16626-1050	RING, RETAINING.....	1
5	PA0ZZ	19206	8767165	PIN, GROOVED, HEADED.....	1
6	PA0ZZ	19206	7307476	PIN, STRAIGHT HEADLESS.....	1
7	PA0ZZ	19206	7307509	PIN, GROOVED, HEADED.....	1
8	PA0ZZ	19206	7307475	SPRING, HELICAL COMPRESSION.....	1
9	PA0ZZ	96906	MS19061-13	BALL, BEARING.....	1
10	PA0ZZ	19206	7307484	CAM, CONTROL.....	1
11	PA0ZZ	19206	7307523	BODY, BREECHBLOCK.....	1

END OF FIGURE

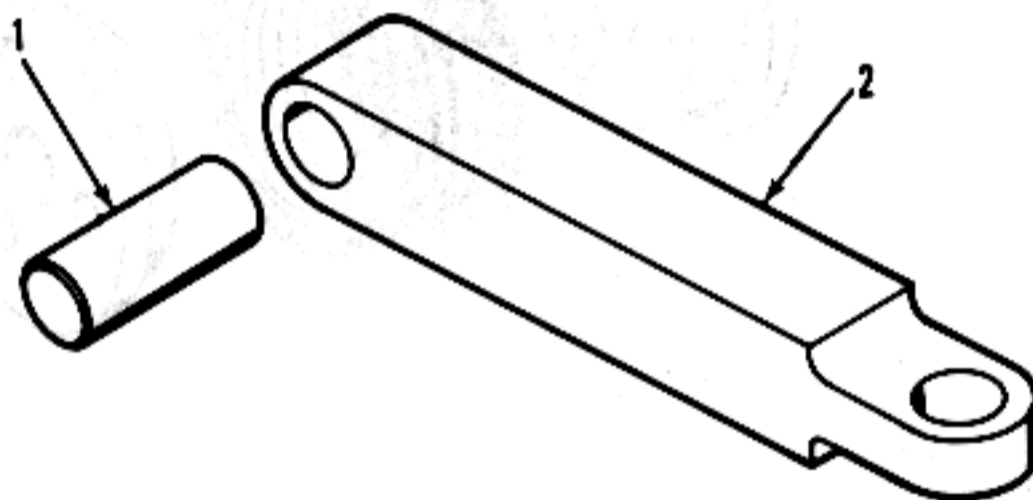


Figure 11. Lanyard Rod Assembly.

(1) ITEM NO	(2) SMR CODE	(3) FSCM	(4) PART NUMBER	(5) DESCRIPTION AND USABLE ON CODES(UDC)	(6) QTY
-------------------	--------------------	-------------	-----------------------	---	------------

GROUP 0404 LANYARD ROD ASSEMBLY  
(7307472)

FIG.11 LANYARD ROD ASSEMBLY

1	PA0ZZ	96906	MS16562-141	PIN, SPRING.....	1
2	XA0ZZ	19206	7307485	BODY.....	1

END OF FIGURE



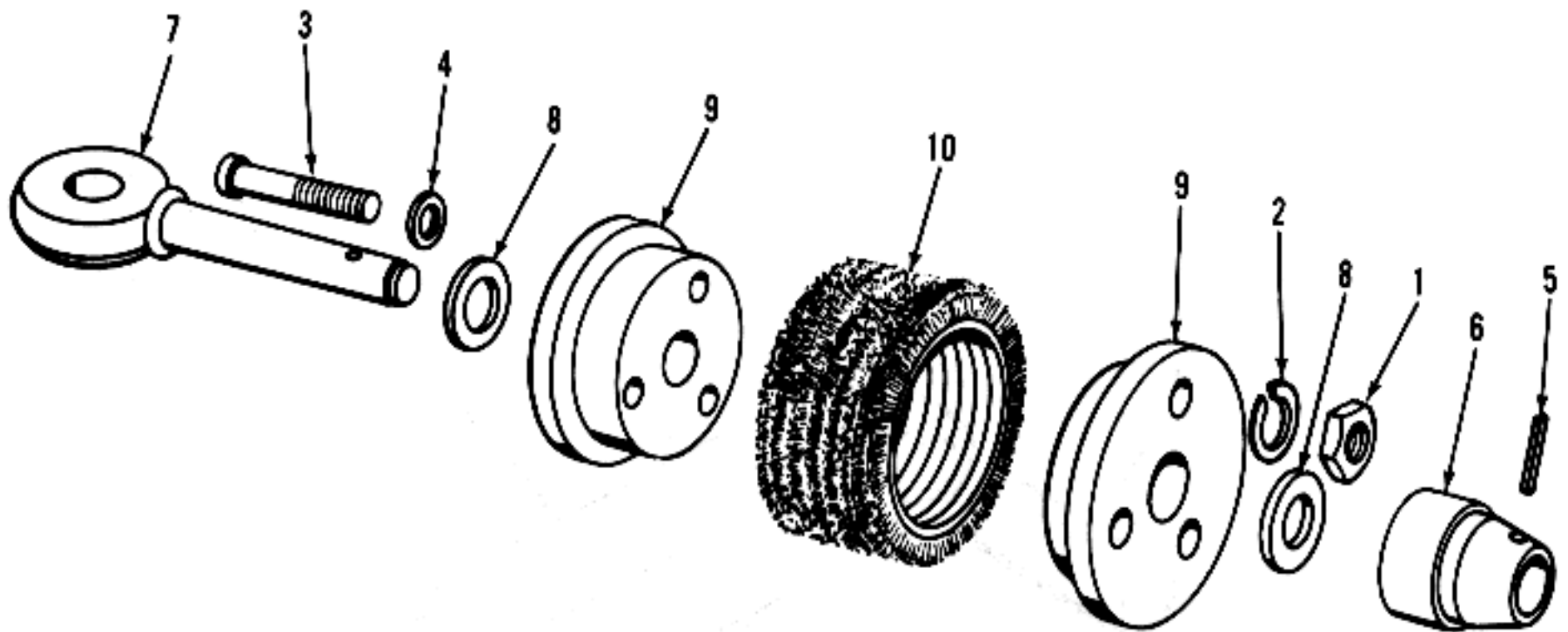


Figure 12. Artillery Cleaning Brush.

(1) ITEM NO	(2) SMR CODE	(3) FSCM	(4) PART NUMBER	(5) DESCRIPTION AND USABLE ON CODES (UIC)	(6) QTY
-------------------	--------------------	-------------	-----------------------	--	------------

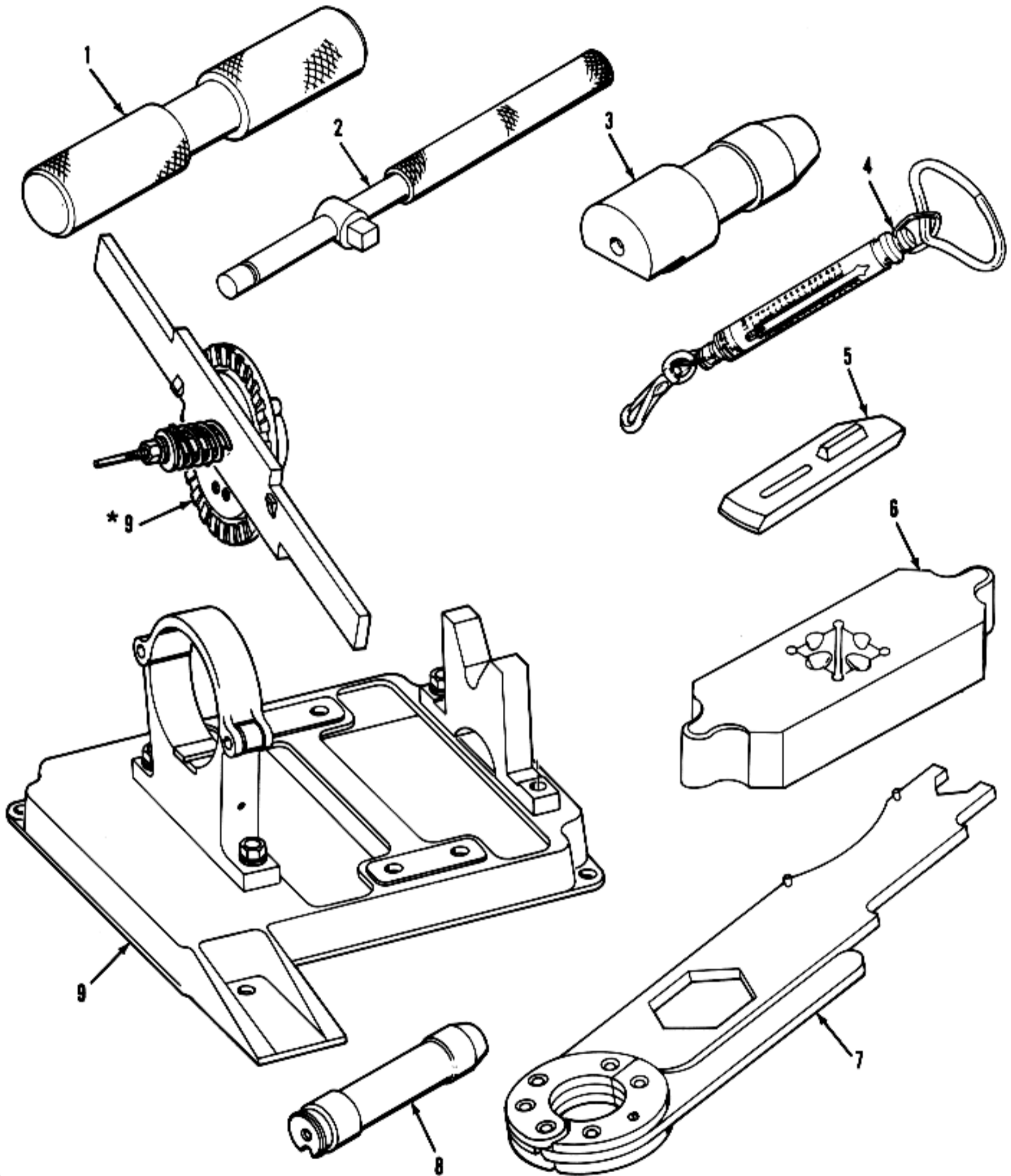
GROUP 13 ARTILLERY CLEANING  
BRUSH (8766039)

FIG.12 ARTILLERY CLEANING BRUSH

1	PA0ZZ	96906	MS51967-2	NUT, PLAIN, HEXAGON.....	3
2	PA0ZZ	96906	MS35338-63	WASHER, LOCK.....	3
3	PA0ZZ	96906	MS90728-16	SCREW, CAP, HEXAGON HEAD.....	3
4	PA0ZZ	96906	MS27183-10	WASHER, FLAT.....	3
5	PA0ZZ	96906	MS16562-42	PIN, SPRING.....	1
6	PA0ZZ	19206	8766029	ADAPTER, BORE BRUSH.....	1
7	PA0ZZ	19206	8766031	BOLT BLANK.....	1
8	PA0ZZ	96906	MS27183-18	WASHER, FLAT.....	2
9	PA0ZZ	19206	8766038	CAP, END.....	2
10	PA0ZZ	19207	6157208	BRUSH SECTION.....	1

END OF FIGURE

## Section III. SPECIAL TOOLS LIST



\*SUPPLIED WITH IDENTICALLY NUMBERED PART

Figure 13. Special Tools.

(1) ITEM NO	(2) SMR CODE	(3) FSCM	(4) PART NUMBER	(5) DESCRIPTION AND USABLE ON CODES(UCC)	(6) QTY
-------------------	--------------------	-------------	-----------------------	---	------------

## GROUP 9500 SPECIAL TOOLS

## FIG.13 SPECIAL TOOLS

2 PA0ZZ 50024 2479141

HANDLE, SOCKET WRENCH WRENCH -T-  
SLIDING 3/4 DRIVE 18-1/2 O/A LG.....  
BOI:1 AUTH BY NUMBERED BTRY/CO AND  
SIMILAR HQ PERFG ORG/AVUM MAINT  
FOR OTHER UNITS

5 PA0ZZ 19206 7307536

TOOL, FIRING CABLE.....  
BOI:1 AUTH BY NUMBERED BTRY/CO AND  
SIMILAR HQ PERFG ORG/AVUM MAINT  
FOR OTHER UNITS

6 PA0ZZ 19206 7309111

TOOL, RECOIL, COMPENSATING RING  
ADJUSTING.....  
BOI:1 AUTH BY NUMBERED BTRY/CO AND  
SIMILAR HQ PERFG ORG/AVUM MAINT  
FOR OTHER UNITS

END OF FIGURE

## Section IV. NATIONAL STOCK NUMBER AND PART NUMBER INDEX

NATIONAL STOCK NUMBER INDEX					
STOCK NUMBER	FIG.	ITEM	STOCK NUMBER	FIG.	ITEM
1015-00-004-2318	6	15	5305-00-730-7478	8	15
	9	2	1015-00-730-7502	7	13
5315-00-013-7137	4	1	1015-00-730-7503	7	8
5315-00-051-8636	4	14	1015-00-730-7509	10	7
5315-00-052-6697	11	1	1015-00-730-7512	8	11
5305-00-052-8251	6	1	1015-00-730-7523	10	11
	7	1	4933-00-730-7536	13	5
5305-00-071-2513	12	3	5310-00-761-6882	12	1
1015-00-089-8542	8	17	1015-00-782-9872	12	6
5120-00-099-8544	13	2	1015-00-782-9873	12	9
5306-00-143-1678	12	7	5310-00-809-4058	12	4
5315-00-240-1008	12	5	5310-00-809-5998	12	8
5365-00-256-2861	10	4	5315-00-844-3966	7	9
5310-00-274-8715	12	2	5360-00-854-4471	2	3
1290-00-300-8034	1	9	5360-00-873-6959	7	10
4933-00-334-0498	13	6	1015-00-878-0032	8	16
5305-00-336-1616	7	16	1240-00-886-5888	1	8
1015-00-340-3426	7	15	5315-00-898-9823	3	3
1240-00-344-4689	1	7	3110-00-948-9796	10	9
1005-00-345-3827	2	2	5305-00-978-9378	8	10
1240-00-346-7676	5	1	5305-00-983-6662	7	12
1015-00-445-9902	10	10	5305-00-983-6664	7	4
5315-00-474-7405	10	5	5305-00-983-7448	7	2
1290-00-535-7761	1	6	1015-00-998-6072	7	11
5305-00-576-2150	10	2	1015-00-998-6073	6	13
1005-00-603-1297	2	8	1015-00-998-6074	6	8
1015-00-615-7208	12	10	1015-00-998-6075	6	17
5315-00-616-5514	6	3	1015-01-044-6921	2	1
	10	3			
5305-00-638-7518	7	5			
1015-00-672-8735	6	7			
1015-00-679-0481	6	4			
1015-00-723-0797	6	5			
1015-00-723-0799	6	14			
1015-00-723-0800	9	1			
3110-00-723-0807	6	11			
5360-00-723-0809	6	16			
	9	3			
5360-00-723-0810	6	9			
1005-00-726-6357	3	4			
1005-00-726-6374	3	2			
1005-00-726-6393	3	5			
1005-00-726-6400	3	1			
5360-00-726-6415	2	9			
5360-00-726-6416	3	6			
1005-00-726-6561	4	15			
1015-00-730-7472	7	7			
5360-00-730-7475	10	8			
5315-00-730-7476	10	6			
1015-00-730-7477	10	1			

## NATIONAL STOCK NUMBER AND PART NUMBER INDEX

FSCM	PART NUMBER	PART NUMBER INDEX		ITEM
		STOCK NUMBER	FIG.	
88044	AN565D820H6	5305-00-576-2150	10	2
96906	MS16562-120	5315-00-051-8636	4	14
96906	MS16562-131	5315-00-898-9823	3	3
96906	MS16562-141	5315-00-052-6697	11	1
96906	MS16562-42	5315-00-240-1008	12	5
96906	MS16562-49	5315-00-844-3966	7	9
96906	MS16626-1050	5365-00-256-2861	10	4
96906	MS16997-58	5305-00-978-9378	8	10
96906	MS16998-45	5305-00-983-6662	7	12
96906	MS16998-47	5305-00-983-6664	7	4
96906	MS16998-50	5305-00-052-8251	6	1
			7	1
96906	MS16998-74	5305-00-983-7448	7	2
96906	MS19061-13	3110-00-948-9796	10	9
96906	MS24665-814	5315-00-013-7137	4	1
96906	MS27183-10	5310-00-809-4058	12	4
96906	MS27183-18	5310-00-809-5998	12	8
96906	MS35338-63	5310-00-274-8715	12	2
96906	MS35756-6	5315-00-616-5514	6	3
			10	3
96906	MS51967-2	5310-00-761-6882	12	1
96906	MS90728-16	5305-00-071-2513	12	3
19206	11577981	1015-00-089-8542	8	17
19206	11578002	1015-00-878-0032	8	16
19206	11578015	1015-00-998-6072	7	11
19206	11578016	5360-00-873-6959	7	10
19206	11578017	1015-00-998-6073	6	13
19206	11578018	1015-00-998-6074	6	8
19206	11578019	1015-00-998-6075	6	17
19206	11578301	1015-00-004-2318	6	15
			9	2
19204	12003046	1015-01-044-6921	2	1
50024	2479141	5120-00-099-8544	13	2
19207	6157208	1015-00-615-7208	12	10
19204	7230794		9	4
19206	7230797	1015-00-723-0797	6	5
19206	7230799	1015-00-723-0799	6	14
19206	7230800	1015-00-723-0800	9	1
19206	7230807	3110-00-723-0807	6	11
19206	7230809	5360-00-723-0809	6	16
			9	3
19206	7230810	5360-00-723-0810	6	9
19204	7266341		2	7
19204	7266357	1005-00-726-6357	3	4
19204	7266374	1005-00-726-6374	3	2
19204	7266393	1005-00-726-6393	3	5
19204	7266400	1005-00-726-6400	3	1
19204	7266415	5360-00-726-6415	2	9
19204	7266416	5360-00-726-6416	3	6
19204	7266561	1005-00-726-6561	4	15
19204	7267851	1005-00-345-3827	2	2

## NATIONAL STOCK NUMBER AND PART NUMBER INDEX

FSCM	PART NUMBER	PART NUMBER INDEX		FIG.	ITEM
			STOCK NUMBER		
19204	7268393		1005-00-603-1297	2	8
19206	7307472		1015-00-730-7472	7	7
19206	7307475		5360-00-730-7475	10	8
19206	7307476		5315-00-730-7476	10	6
19206	7307477		1015-00-730-7477	10	1
19206	7307478		5305-00-730-7478	8	15
19206	7307484		1015-00-445-9902	10	10
19206	7307485			11	2
19206	7307502		1015-00-730-7502	7	13
19206	7307503		1015-00-730-7503	7	8
19206	7307509		1015-00-730-7509	10	7
19206	7307512		1015-00-730-7512	8	11
19206	7307520			6	2
19206	7307523		1015-00-730-7523	10	11
19206	7307536		4933-00-730-7536	13	5
19206	7309107		5305-00-336-1616	7	16
19206	7309111		4933-00-334-0498	13	6
19206	7309187		1015-00-340-3426	7	15
19204	7791229		5360-00-854-4471	2	3
19200	8228878		1240-00-346-7676	5	1
19200	8286960		1240-00-886-5888	1	8
19200	8293769		1290-00-300-8034	1	9
19200	8299670		1240-00-344-4689	1	7
19200	8299677		1290-00-535-7761	1	6
19206	8766017		1015-00-679-0481	6	4
19206	8766029		1015-00-782-9872	12	6
19206	8766031		5306-00-143-1678	12	7
19206	8766038		1015-00-782-9873	12	9
19206	8766068		1015-00-672-8735	6	7
19206	8767165		5315-00-474-7405	10	5
19203	9406768		5305-00-638-7518	7	5