

Point 'n View Binocular & Digital Camera



8x22 with built in
Binoculars VGA Digital
Camera

©2010 BARSKA® | La Verne, CA 91750 | USA
www.barska.com

Introduction

BARSKA's Point 'n View is a state-of-the-art integration of a high quality roof prism binocular and digital camera that is equally at home on a nature outing, sporting event, or on vacation. Instead of packing a separate binocular and digital camera, Point 'n View gives you the convenience of both in one compact device. See, save, and share your special moments with friends and family, simply look through the binoculars and capture or record the scene with the digital camera. It's that simple. Once the image is recorded, you can download it to your PC, and print it or e-mail it to family and friends. You can even record video! Visit BARSKA's website www.barska.com to see our full line of binoculars, riflescopes, spotting scopes, telescopes and more.

WARNINGS

Cautions

- Never immerse digital camera binocular into any fluid or liquid. Remove dust or stains with a soft cloth dampened with water or neutral detergent. Keep in a dry cool dust-free environment or a container when it is not in use.
- Avoid dropping the digital camera binocular. Do not disassemble digital camera binocular.

Usage of the battery

- Please always use Alkaline Battery (AAA Alkaline Battery)
- Please remove batteries when not using your digital camera binocular for long periods of time.

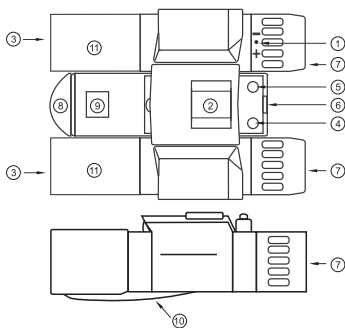
About usage

- To avoid damage do not use the digital camera binocular under the following conditions.
 - 1.Places in temperature higher than 100° F.(35° C)
 - 2.Damp or dusty places.
 - 3.Places with strong electromagnetic field.
- Please do not disassemble or repair the product to avoid malfunction.
- Please do not drop the product on the ground to avoid malfunction.

www.barska.com

②

Parts of the Binocular



- | | |
|-------------------------------|-----------------------------|
| 1. Diopter Knob(on underside) | 6. USB Port |
| 2. Center Focus Knob | 7. Eyepiece |
| 3. Objective Lens | 8. Camera Lens |
| 4. Power/Mode Button | 9. LCD Screen |
| 5. Shutter/Set Button | 10. Battery Compartment Lid |
| | 11. Barrel |

Accessories Included

- | | |
|------------------|-------------------|
| 1. USB Cable | 3. Neck Strap |
| 2. Carrying Case | 4. PC Software CD |

www.barska.com

③

Binocular Basics

WARNING!

Never use digital camera binocular to look at the sun!
Looking at or near the sun will cause instant and irreversible damage to your eye. Eye damage is often painless, so there is no warning to the observer that damage has occurred until it is too late. Do not point the binocular at or near the sun. Children should always have adult supervision while observing.



Adjustment of eye-relief for eyeglass wearers

Fold down the rubber eyecups and place them against your glasses to get the best viewing result.

Adjusting the eyepieces

The distance between your eyes is called inter pupillary distance. The inter pupillary distance is different from one person to another. It is important to adjust to your inter pupillary distance before using your digital camera binocular:

- Hold digital camera binocular firmly in the normal viewing position.
- Adjust the barrels by pushing together or pulling apart until you see a single circle field with both of your eyes.

Focusing the Binocular

These binoculars have individual focus system which means the focusing knob is located individually in each eyepiece. Focus the left eyepiece to your left eye and the right eyepiece to your right eye.

- Look at something in the distance. Close the right eye (or cover the front of the right binocular), and focus the left eyepiece to your left eye until the image is clear.
- Close the left eye (or cover the front of the left binocular), and focus the right eyepiece to your right eye until the image is clear.
- Adjust each eyepiece as necessary.
- When looking at a different image you need to repeat this process.

www.barska.com

④



Attention!:

* Remove the batteries when not using the camera. Failure to do so will result in losing pictures and dead batteries after several days.

* When batteries are removed, memory of pictures can maintain for 30 seconds. Batteries must be replaced within 30 seconds to avoid losing pictures. Be sure the digital camera binocular is OFF before charging the batteries.

Inserting Batteries

Lift the battery compartment lid and insert two AAA size alkaline batteries.

Taking Pictures w/Camera

Turn on the power

Press menu button wait for two seconds to turn on the power, and then operate after beep. (Automatic power off after idling 30 seconds).

Photo taking

Adjust the camera binocular when the images are clear. Press shutter button. Camera binocular will beep once after the image has been saved, it means you have taken the picture successfully and the number on the LCD display increases by 1. When pressing the shutter button, if you hear it ring out twice this indicates that the digital camera is at full capacity.

Power Off - $\square F$

1. Press the menu button to select the icon $\square F$ shown on the LCD screen.
2. Press the shutter button once and the camera will switch off.

Self-Timer - St

1. Press the menu button to select the icon St shown on the LCD screen.
2. Press the shutter button to start a 10 second count down (the camera will beep once a second).
3. After 10 seconds a photo will be taken automatically.

Continuous Shot Mode - $\square B$ (video)

1. Press the menu button to select the icon $\square B$ shown on the LCD display.
2. Hold the shutter button down to shoot continuously.
3. The camera will continue to beep while the video is being taken. Photos taken in Continuous shot mode may fail under poor lighting conditions. Files are saved as video clips (AVI).

Continuous Still Shot Mode - $\square S$ (3 continuous still shots)

1. Press the menu button to select the icon $\square S$ shown on the LCD display.
2. Press the shutter button once - 3 continuous shots are taken.

Note : The 3 photos taken in this mode will be downloaded individually.

Operation Instruction

Delete (Last Photo) - $\square L$

To delete the last photo taken:

1. Press the menu button to select the icon $\square L$ shown on the LCD screen.
2. Press the shutter button within 5 seconds and the last photo will be deleted.
3. The LCD counter will display the updated number of photos that can be taken at the current resolution and compression.

Delete All - $\square A$

To delete all photos on the camera.

1. Press the menu button to select the icon $\square A$ shown on the LCD screen.
2. Press the shutter button and the photo counter will flash.
3. Press the shutter button again within 5 seconds and all photos in the camera will be deleted.
4. The LCD counter will be reset to show the maximum number of photos that can be taken at the current resolution and compression.

Photo Resolution Hl / Lo and Compression Hd / Ld

There are 2 photo resolutions to select from, high resolution - Hl or low resolution - Lo

1. Press the menu button to select Hl or Lo shown on the LCD display.
2. If the LCD displays Hl this means the present resolution is Lo . In order to change to Hl , click on the shutter button within 5 seconds.
3. If the LCD displays Lo this means the present resolution is Hl . In order to change to Lo , click on the shutter button within 5 seconds
4. All photos taken after changing resolution will be taken at the new resolution.

Operation Instruction cont.

There are 2 photo compressions to select from, high density - Hd or low density - Ld .

1. Press the menu button to select Hd or Ld shown on the LCD display
2. If the LCD displays Hd this means the present compression is Ld . In order to change to Hd click on the shutter button within 5 seconds
3. If the LCD displays Ld this means the present compression is Hd . In order to change to Ld click on the shutter button within 5 seconds.
4. All photos taken after changing compression will be at the new compression.

The photo resolution and compression settings determine the number of photos that can be taken and the amount of memory required for each photo. The following table tells you how many photos can be taken based on the image resolution and compression:

Resolution	Compression	Number of photos
Hl	Ld	26 photos
Hl	Hd	78 photos
Lo	Ld	104 photos
Lo	Hd	About 312 photos

Frequency - $50 / 60$

The camera has 2 Frequency settings, 50HZ for Asia and Europe, and 60HZ for the U.S. and Japan. To set the camera for the correct frequency:

1. Press the menu button to select the icon 50 for 50HZ or the icon 60 for 60HZ shown on the LCD screen.
2. Press the shutter button to change the frequency setting.

Energy Save Mode:

To conserve battery power, if the camera is not used within 30 seconds, it will automatically switch off.

Driver Installation (For Windows 2000/XP/Vista/7)

Insert installation disk into the Disk Driver

1. Click twice on "My Computer" and then click twice on the path for CD-ROM. You will see "setup".
2. Double click on "setup" and "Welcome to Install Dual mode camera" will appear. Click "Next" to continue and install the software as per instructions on screen. It will take a few minutes while the software searches for installed components.
3. After process of installation, click "Finish".
4. At this time, your computer will restart soon and the folder "Dual mode camera" will appear on your PC desktop.

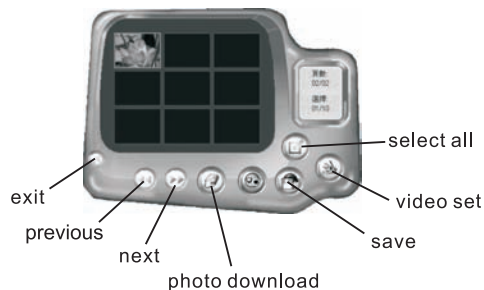


IMPORTANT: Before installing CD Driver, make sure that you do not have the camera or USB cable attached to your computer. This will affect the install process and will cause your installation to fail. Do not connect the camera and cable to your computer until the entire installation process has been completed.

Note: In XP operating system, when the camera is connected to the computer with USB cable, "Found new Hardware" dialog appears. While installing hardware you may get a message that the software has not passed Windows logo testing, please click "Continue anyway" and click "Finish" and the new device can be used.

Note: If you have installed this software before "Confirmed file deletion" dialog will appear when you attempt to reinstall the same software.

Note: The functions of the icons at the bottom of the above dialog are as follows: (from left to right) previous, next, photo download, save and select all pictures and video set.

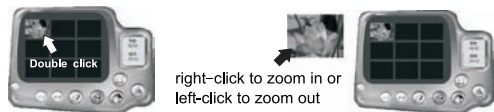


Uploading Images

- 1) Connect camera and computer with enclosed USB cable, your computer can identify new hardware and install it automatically without any other operations. The photos from the camera can be downloaded to the computer at any time.
- 2) Double click "Dual mode camera" on your PC desktop.
- 3) Double click "My DSC" the following blue box interface will appear



- 4) Click the camera icon in the above dialog (the third icon(download) from left to right at bottom of screen) and photos stored in the camera will appear in the boxes. When there are no photos in the camera, the following message will appear "There are no photos in the camera".



- 5) You can better view each photo by right-clicking on each photo to enlarge photo and the left-click on photo to bring back to smaller size. To get back to screen, click on "X" at end of page.
- 6) To save an individual photo > right-click click on the photo > a red frame will appear around the photo > then click the save button (fifth button from the left on bottom of screen). A screen will appear to save the photo to your "My Documents" or "My Pictures" folder. You also can choose to save as a ".Jpeg" or save as "Bmp" Name the photo and click Save. The photo will be saved to your "My Documents" or "My Pictures" folder> click "X" to exit. You also have the option to save all photos. Just click on yellow icon (sixth button from left on bottom of screen). Click "Save" all photos and all photos will appear> then click save.

1. Connect camera and computer with USB cable.
2. Click the "Dual mode camera" folder
3. When it opens, click on "MyDSC" icon.
4. Blue screen with white boxes will appear.
5. Scroll down to first button on bottom of screen and click on "download".
6. White box with photo will have red Avi in it.
7. Right click on that Avi photo to put red line around the photo.

8. Scroll to fifth button from the left on bottom of screen and Save the Avi photo.
9. Save to "My Documents" or "My Pictures" name the file and press Save.

To Play the Saved VIDEO:

1. Go to your Windows Media Player > then click Start > Programs > accessories > entertainment > Windows Media Player.
2. Windows Media Player opens. Go to top left of page and click on "File".
3. Click open and click on your Saved Avi file to open.
4. View video on screen.

PC Camera Function

1. Connect camera and computer with enclosed USB cable.
2. Double click the "Dual mode camera" folder on your PC desktop, then double click on the PCCam shortcut > then PCCAM image box will appear on your screen.
3. Select "preview" under menu "Option", then PC Camera will stream live (point camera at yourself)
4. Under menu "Option" you can make setting for "video capture filter" Video capture pin.
5. Click "file" to choose "set Captured File" for set the file name as E:123.avi and click "open". "Set file size" Dialog appears then clicks "OK" after set the capture file size.
6. Select "Start capture" under Menu "capture" and click "OK" in ready to capture dialog.
7. Without time set, the process of video capture will be continued until you click "Stop Capture" and then exit PC Cam dialog window.