

How to fake fingerprints?

October 26, 2004 (starbug)

Simple instructions how copy and fake fingerprints

In order to fake a fingerprint, one needs an original first. Latent fingerprints are nothing but fat and sweat on touched items. Thus to retrieve someone else's fingerprint (in this case the fingerprint you want to forge) one should rely on well tested forensic research methods. Which is what's to be explained here. (Figure 1).



Figure 1: Fat residue from fingerprint

A good source of originals for our counterfeits are glasses, doorknobs and glossy paper. The standard method of forensic research makes them visible: Sprinkling it with colored powder, which sticks to the fat (Figure 2).

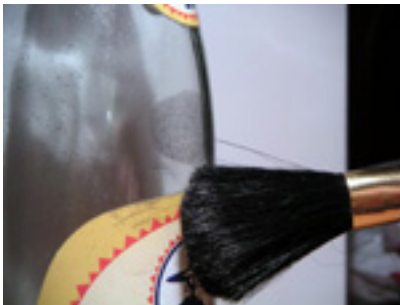


Figure 2: Visualisation with graphite powder

Another solution involves Cyanoacrylat, the main ingredient of superglue. A small amount thereof is poured into a bottlecap, which is then turned upside down and put over the fingerprint. (Figure 3).



Figure 3: Visualisation with superglue

The Cyanoacrylat gasses out and reacts with the fat residue to a solid, white substance (Figure 4).

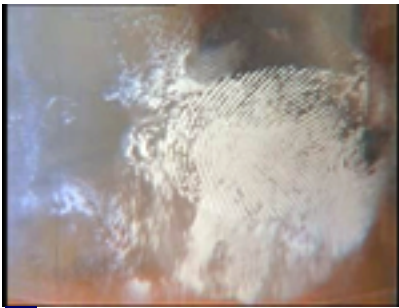


Figure 4: Print after Cyanacrylate processing

The further treatment involves scanning/photographing (Figure 5) and a bit of graphical refurbishment (Figure 6).



Figure 5: Digitalising the print

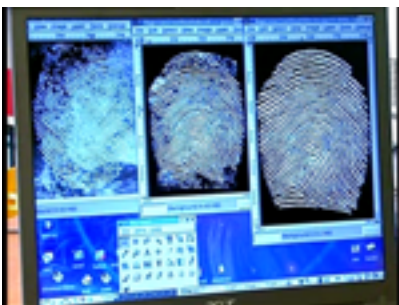


Figure 6: Brushing up the image of the print

The goal is to get an exact image of the fingerprint, for further use as mold, out of which the

dummy is made. The easiest way is to print the image on a transparency slide (the ones normally used for an overhead projector) with a laser printer. The toner forms a relief, which is later used similar to letter press printing. Wood glue is suitable for producing the dummy (Figure 7)

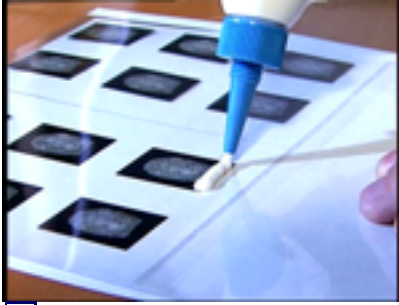


Figure 7: Wood glue for the dummy

A small dash of glycerene may be used to optimize humidity and workability. After thorough mixing, the dummy gets coated with a thin layer of the compound (Figure 8,9).

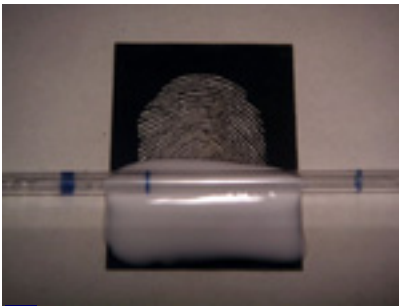


Figure 8: Covering the dummy with wood glue

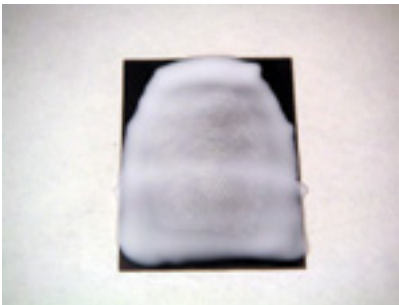


Figure 9: Glue layer on the printout

After the glue has dried (Figure 10), it is pulled off the foil (Figure 11) and is cut to finger size.



Figure 10: Hardened glue



Figure 11: Dummy, ready to use

Theatrical glue is used to glue the dummy onto the own finger (Figure 12).



Figure 12: The new identity is ready!

The new identity is ready!

✉ [biometrie\(at\)ccc.de](mailto:biometrie(at)ccc.de)