

CONVECTIVE MOTIONS AND NET CIRCULAR POLARIZATION IN SUNSPOT PENUMBRAE

J.M. BORRERO¹ & S.K. SOLANKI^{1,2}¹Max Planck Institut für Sonnensystemforschung, Max Planck Strasse 2, Katlenburg-Lindau, 37191, Germany²School of Space Research, Kyung Hee University, Yongin, Gyeongg: 446-701, Korea

borrero@mps.mpg.de, solanki@mps.mpg.de

Draft version November 13, 2009

ABSTRACT

We have employed a penumbral model, that includes the Evershed flow and convective motions inside penumbral filaments, to reproduce the azimuthal variation of the net circular polarization (NCP) in sunspot penumbrae at different heliocentric angles for two different spectral lines. The theoretical net circular polarization fits the observations as satisfactorily as penumbral models based on flux-tubes. The reason for this is that the effect of convective motions on the NCP is very small compared to the effect of the Evershed flow. In addition, the NCP generated by convective upflows cancels out the NCP generated by the downflows. We have also found that, in order to fit the observed NCP, the strength of the magnetic field inside penumbral filaments must be very close to 1000 G. In particular, field-free or weak-field filaments fail to reproduce both the correct sign of the net circular polarization, as well as its dependence on the azimuthal and heliocentric angles.

Subject headings: Sun: sunspots – Sun: magnetic fields – Sun: polarimetry

1. INTRODUCTION

Several investigations have proposed the presence of convective motions within the sunspot penumbra (Danielson 1961, Grosser 1989, Márquez et al. 2006, Langhans 2006, Sánchez Almeida 2005, 2006, Sánchez Almeida et al. 2007), but only very recently have those motions been observationally pinpointed as occurring within penumbral filaments (Ichimoto et al. 2007; Rimmele 2008; Zakharov et al. 2008; cf. Bellot Rubio et al. 2005). Zakharov and co-workers have found that these convective flows appear similar to the upper part of convective rolls proposed by Danielson (1961), with an upflow at the filament's center that turns into downflowing lanes at its edges. The measured speed of these motions is about 1 km s⁻¹. Superposed to this convective flow is the Evershed flow, with typical speeds of about 4 – 5 km s⁻¹, although much larger values have been reported (del Toro Iniesta et al. 2001; Penn et al. 2003; Bellot Rubio et al. 2004; Borrero et al. 2005; Sánchez Almeida 2005). Recent 3D MHD simulations (Scharmer et al. 2008a; Rempel et al. 2009) suggest a relation between these two velocity fields, with the Evershed flow being formed by the deflection of the convective flow along the horizontal magnetic field inside penumbral filaments.

It is also well established that as the observer's line-of-sight penetrates through the penumbral ambient field and into the penumbral filament, the magnetic inclination and line-of-sight velocity undergo large variations. These are widely accepted as being responsible for creating the anomalous (i.e. asymmetric or even multi-lobed) polarization profiles observed in the penumbra (Sánchez Almeida & Lites 1992, Solanki & Montavon 1993; see Solanki 2003 for a review). Models incorporating such variations have successfully reproduced the azimuthal and Center-to-Limb variation of the net circular polarization (NCP) in visible and infrared Fe I lines (Sánchez Almeida 1996, 2005; Martínez Pillet 2000, 2001; Schlichenmaier &

Collados 2002; Schlichenmaier et al. 2002; Müller et al. 2002; Borrero et al. 2007).

However, the effect that the newly-discovered convective component of the velocity field inside penumbral filaments has on the net circular polarization (azimuthal and center-to-limb variation) has not been studied. The convective flow can potentially have important consequences for the NCP observed at disk center, or at all disk positions at locations perpendicular to the line-of-symmetry of the sunspot. In both cases the Evershed flow is almost perpendicular to the line-of-sight, which should enhance the contribution of the convective flow. Furthermore, the NCP generated by the convective flow could be detected by spectropolarimeters operating at extremely high spatial resolution (Scharmer et al. 2008b) and it could be related to the non-zero NCP observed at the edges of penumbral filaments (Ichimoto et al. 2008).

In this paper we address this possibility and study the effect of the combined magnetic and convective flow pattern reported by Zakharov et al. inside penumbral filaments, on the azimuthal and center-to-limb variations of the net circular polarization in sunspot penumbrae.

2. MHS MODEL FOR PENUMBRA FILAMENTS

We will adopt a 2.5D model for penumbral filaments similar to that of Scharmer & Spruit (2006) and Borrero (2007). We assume that the properties of the filament do not change along its axis, i.e. directed radially outwards in the sunspot (y -axis). Therefore we can restrict ourselves to the XZ plane. In this plane the filament is located at the bottom of the domain: $z = 0$. Hereafter we employ the indexes 'f' and 's' to refer to the filament and its surroundings, respectively. The filament's boundary has a semi-circular shape of radius R . Using polar coordinates (r, θ) , the magnetic field vector for the filament's interior, \mathbf{B}_f , and its surroundings \mathbf{B}_s are prescribed as follows:

$$\mathbf{B}_s(r, \theta) = B_0 \sin \gamma_0 \mathbf{e}_y + B_0 \sin \theta \cos \gamma_0 \left(1 - \frac{R^2}{r^2}\right) \mathbf{e}_r + B_0 \cos \theta \cos \gamma_0 \left(1 + \frac{R^2}{r^2}\right) \mathbf{e}_\theta \quad \text{if } r > R, \quad (1)$$

$$\mathbf{B}_f(r, \theta) = B_{f0} \mathbf{e}_y \quad \text{if } r < R, \quad (2)$$

where B_0 and γ_0 refer to the strength and inclination (with respect to the z -axis) of the surrounding magnetic field far away from the tube ($r \rightarrow \infty$). B_{f0} refers to the magnetic field inside the penumbral filament, which we assume to be aligned with the filament's axis and homogeneous. We do not attempt to model what happens below $z = 0$ and therefore, throughout this paper, the polar angle coordinate is constrained to $\theta \in [0, \pi]$ (see Figure 1). Following Spruit & Scharmer (2006) we have adopted a potential configuration for the surrounding magnetic field \mathbf{B}_s . Similarly, the velocity field is prescribed as follows:

$$\mathbf{V}_s = 0 \quad \text{if } r > R, \quad (3)$$

$$\mathbf{V}_f(r, \theta) = V_e \mathbf{e}_y + V_{fr}(r) \mathbf{e}_r + V_{f\theta}(r, \theta) \mathbf{e}_\theta \quad \text{if } r < R, \quad (4)$$

where V_e refers to the Evershed flow (radial flow along the y -axis). Superposed to it, we allow for the possibility of a convective flow pattern in the XZ plane. The radial, V_{fr} , and angular $V_{f\theta}$ components of the convective velocity flow are given by:

$$V_{fr}(r) = V_c \left\{ 1 - e^{-\beta(r-R)^2} \right\} \quad (5)$$

$$V_{f\theta}(r, \theta) = \left[\rho_0 \exp\{-r \sin \theta / H_s\} + r \delta \sin \theta \right]^{-1} \left\{ \frac{\partial(rV_r)}{\partial r} \times \left[\rho_0 \left(\theta - \frac{\pi}{2} \right) + \alpha r \cos \theta \right] + rV_r \left[\alpha \cos \theta + \frac{r\rho_0}{2H_s^2} \left(\theta - \frac{\pi}{2} - \cos \theta \sin \theta \right) \right] \right\} \quad (6)$$

where ρ_0 refers to the density in the surrounding atmosphere at $z = 0$: $\rho_0 = \rho_s(0)$. In addition, α and δ can be written as:

$$\alpha = \frac{\rho_0}{H_s} - \delta, \quad (7)$$

$$\delta = \frac{B_0^2 \cos^2 \gamma_0}{\pi g R^2}, \quad (8)$$

where g represents the Sun's gravitational acceleration at the surface ($g = 2.74 \times 10^4 \text{ cm s}^{-2}$) and H_s is the density scale height for the surrounding atmosphere in which the filament is embedded. The value of β in Eq. 5 can be chosen to allow for a more rapid/slow drop of the radial (in the XZ plane) velocity profile within the penumbral filament. In our case we have chosen it such that $\beta R^2 \gg 1$. This ensures that at $r = 0$, $V_{fr}(0) \simeq V_c$. Thus V_c can be identified with the magnitude of the convective upflow at the filament's center. The complicated functional dependence of the velocity field comes from the fact that it has been derived fully analytically under the following constraints: (a)

Mass conservation inside the filament: $\nabla(\rho_f \mathbf{V}_f) = 0$; (b) Hydrostatic equilibrium inside the filament: $\nabla P_{gf} = \rho_f \mathbf{g}$; (c) Total pressure balance between the filament and its magnetic surrounding; and (d) The overall configuration must be convective-like. The rather tedious derivation of $\mathbf{V}_f(r, \theta)$ is described in the Appendix of this paper.

The resulting flow pattern inside the filament in the XZ plane is presented in Figure 1, where it can be seen that it features an upflow at the filament's center, with downflowing lanes at the filament's edges. This convective pattern resembles the flows inside penumbral filaments in the simulations from Heinemann et al. (2007) and Rempel et al. (2009), as well as the pattern deduced from observations by Zakharov et al. (2008).

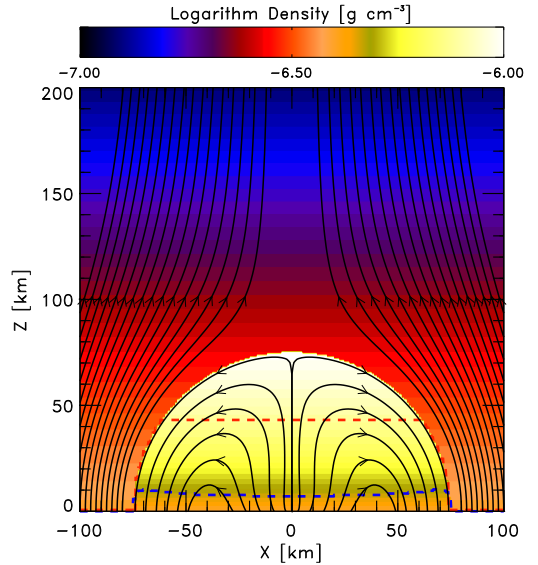


FIG. 1.— Vertical cut (XZ plane) showing the density configuration for a penumbral filament in a surrounding potential field. This configuration was obtained with the following model parameters: $B_0 = B_{f0} = 1000 \text{ G}$, $R = 75 \text{ Km}$, $\gamma_0 = 60^\circ$. The field lines outside the filament ($r > R$) correspond to the magnetic field lines in the surrounding atmosphere (Eq. 1) projected onto the XZ plane, while the field lines inside the filament denote the convective flow pattern (Eq. 4-8) in the same plane. The blue dashed line shows the location of the $\tau_3 = 1$ level (Wilson depression) and the dashed red line denotes the location of the constant ($1.3 \times 10^5 \text{ dyn cm}^{-2}$) gas pressure level.

Our model can be used to mimic the magnetostatic solutions for the gappy penumbral model presented by Scharmer & Spruit (2006). This can be achieved by simply reducing the magnetic field inside the filament until it becomes a field-free gap $B_{f0} = 0$. It can also mimic the classical flux-tube picture (Borrero 2007; Borrero et al. 2007) by removing the convective flow inside the filament $V_c = 0$. The later two papers will be hereafter referred to as papers I and II.

Once the velocity and magnetic field have been prescribed, we can obtain the pressure and density stratification of the surrounding atmosphere, $P_{gs}(z)$ and $\rho_s(z)$, from a tabulated atmosphere. Here we use the hot umbral model from Collados et al. (1994; other models are discussed in Sect. 6). Note that, since the external magnetic field is potential, the adopted pressure and density stratification are also valid everywhere outside the filament. The

boundary layer between the filament and the surrounding field is located at $(R, \theta) \equiv (\pm\sqrt{R^2 - z^2}, z)$ (in polar and cartesian coordinates, respectively) and denoted by a $*$ throughout this paper. At this boundary the following relation links the external and internal gas pressures:

$$P_{\text{gf}}^* + \frac{B_{\text{f}}^{*2}}{8\pi} = P_{\text{gs}}^* + \frac{B_{\text{s}}^{*2}}{8\pi} \quad (9)$$

This equation is valid irrespective of the external and internal velocity and magnetic fields, as long as their radial components vanish at the filament's boundary: $V_{\text{fr}}^* = V_{\text{sr}}^* = B_{\text{sr}}^* = B_{\text{fr}}^* = 0$. As in paper I, we can take derivatives with respect to θ in Eq. 9 and apply the θ -component of the momentum equation. This yields the following relation for the density across the filament's boundary:

$$\rho_{\text{f}}^* \left\{ Rg \cos \theta + \frac{1}{2} \frac{\partial V_{\text{f}\theta}^{*2}}{\partial \theta} \right\} = \rho_{\text{s}}^* Rg \cos \theta - \frac{1}{8\pi} \frac{\partial B_{\text{s}\theta}^{*2}}{\partial \theta} \quad (10)$$

Note that the velocity we have prescribed (Eq. 6) satisfies $V_{\text{f}\theta}^* = 0$. Therefore Eq. 10 can be simplified into:

$$\rho_{\text{f}}^* = \rho_{\text{s}}^* + \frac{1}{\pi Rg} \left[B_0^2 \sin \theta \cos^2 \gamma_0 \right] \quad (11)$$

These boundary conditions must be applied, together with the general stationary momentum equation, in order to obtain the pressure and density structure inside the filament:

$$\rho(\mathbf{v}\nabla)\mathbf{v} = -\nabla P_g + \frac{1}{c}\mathbf{j} \times \mathbf{B} + \rho\mathbf{g} \quad (12)$$

In this equation (ideal MHD without viscosity) the left-hand-side term corresponds to the advection term, where the right-hand-side terms correspond to the gas pressure gradient, the Lorentz force and the gravity, respectively. Since the magnetic field inside the filament is constant (Eq. 2), the Lorentz force ($\mathbf{j} \times \mathbf{B}$) plays no role in the pressure and density equilibrium for $r < R$. In addition, the convective velocities are much smaller than the sound speed: $V_{\text{fr}}, V_{\text{f}\theta} \simeq 1 \text{ km s}^{-1}$ (see Ichimoto et al. 2007; Zakharov et al. 2008) and therefore the advection term can be neglected. This yields a pressure and density balance that conforms with hydrostatic equilibrium inside the filament: $\nabla P_{\text{gf}} = \rho_{\text{f}}\mathbf{g}$. The horizontal (x -axis) component of this equation yields the pressure. Once it is obtained, the vertical (z -axis) component of the momentum equation gives the density:

$$P_{\text{gf}}(z) = P_{\text{gs}}(z) + \frac{1}{8\pi} \left[4B_0^2 \cos^2 \gamma_0 \left(1 - \frac{z^2}{R^2} \right) + B_0^2 \sin^2 \gamma_0 - B_{\text{f}0}^2 \right] \quad (13)$$

$$\rho_{\text{f}}(z) = \rho_{\text{s}}(z) + z \frac{B_0^2 \cos^2 \gamma_0}{\pi g R^2} \quad (14)$$

Figure 1 shows the density configuration for a penumbral filament and its surroundings, along with the magnetic field lines outside the filament and the convective

flow pattern inside it. Once the gas pressure and the densities are known, the temperature can be evaluated using the ideal gas law with a variable molecular weight to account for the ionization of the different species. As a result, we now have the temperature, density, gas pressure, and the velocity and magnetic field vector at every point in the XZ plane.

Note that our approach to the magneto-hydrostatic equilibrium is slightly different from Scharmer & Spruit (2006). This yields a different thermodynamic structure. For example, in Scharmer & Spruit (2006) the density inside the gap is larger than the density outside by a constant factor at all depths. In our case, the density difference changes linearly with depth (Eq. 14), and it peaks at the top of the filament while vanishing at $z = 0$. Our approach is also different from the flux-tube MHS equilibrium presented in Borrero (2007) in that we do not model the lower half of the filament, as we do not know if deeper down the filament has the shape of a flux-tube or an elongated plume. This in turn means that we do not have to deal with possible negative densities in the lower half of the filament as in the flux-tube case (see Eq. 14 in paper I). It also allows us to have an uniform magnetic field inside the filament (Eq. 2). All these details about the thermodynamics, however, play a secondary role for radiative transfer calculations. In particular, they are negligible for the net circular polarization since this quantity depends mostly on the magnetic field and velocity configurations.

Finally it is also important to mention that Equations 2 and 4 ($\mathbf{B}_{\text{f}}(\mathbf{r}, \theta)$ and $\mathbf{v}_{\text{f}}(\mathbf{r}, \theta)$) imply, through the induction equation, that the magnetic field along the filament's axis, $B_{\text{f}0}$, changes in time. This inconvenience could have been avoided by postulating a magnetic field inside the filament that is parallel to the velocity field. Since the magnitude of the Evershed effect is much larger than that of the convective velocities: $V_e \gg V_c$, it immediately follows that the magnetic field in the XZ plane is much smaller than the magnetic field along the filament axis.

3. REFERENCE FRAME AND AZIMUTHAL VARIATION OF THE NCP

The thermodynamic, kinematic and magnetic configuration for a penumbral filament has been obtained in the previous section in the Local Reference Frame: $\mathcal{S} = \{\mathbf{e}_x, \mathbf{e}_y, \mathbf{e}_z\}$ (where the z -axis corresponds to the direction perpendicular to the solar surface), but in order to study the azimuthal variation of the net circular polarization at different heliocentric angles we need to place ourselves in the observer's reference frame: $\mathcal{S}'' = \{\mathbf{e}_x'', \mathbf{e}_y'', \mathbf{e}_z''\}$, where now the z'' -axis points towards the observer. To that end, we perform a double rotation of the velocity and magnetic field vectors. First a rotation by angle Ψ along \mathbf{e}_z . This allows us to place the filament at any azimuthal position within the sunspot. $\Psi = 0$ refers to the line-of-symmetry of the sunspot on the center-side penumbra (i.e. it points towards the center of the solar disk). Secondly, a rotation by angle Θ (heliocentric angle) along the resulting \mathbf{e}_y' . This allows us to locate the sunspot at any position on the solar disk (see Eq. 1 in paper II). After performing these rotations, the inclination of the magnetic field vector with respect to the observer can be obtained as: $\gamma = \cos^{-1}(B_z''/B)$, the azimuth of the mag-

netic field in the plane perpendicular to the observer as: $\phi = \tan^{-1}(B''_x/B''_y)$, and finally the line-of-sight velocity as: $v_{los} = v''_z$.

The equations describing the ray paths (lines-of-sight) along which the radiative transfer equation is to be solved, is given by:

$$x = x_0 + (z_{\max} - z) \tan \Theta \sin \Psi \quad (15)$$

$$y = y_0 + (z_{\max} - z) \tan \Theta \cos \Psi, \quad (16)$$

where (x_0, y_0, z_{\max}) is the point where the line-of-sight pierces the uppermost boundary of our computational domain. Note that our model is 2.5D which means there are no variations along the filament's axis (y -coordinate) which implies that Equation's 16 role can be simply substituted by a modification in the optical depth scale as $d\tau_{los} = d\tau / \cos \beta$, with $\beta = \tan^{-1}(\tan \Theta \cos \Psi)$. With this information, we can now calculate the paths of each line-of-sight piercing the XZ plane in Figure 1 at different x_0 's. In our calculations we use 64 ray-paths with $x_0 = -2R, \dots, 2R$. The radiative transfer equation is solved using the synthetic module in the SIR code (Ruiz Cobo & del Toro Iniesta 1992) for each ray path. Stokes V profiles as a function of wavelength of two widely used spectral lines: Fe I 6302.5 Å and Fe I 15648.5 Å are computed. The net circular polarization for each ray, N_m is obtained as the wavelength integral of Stokes V , with the final NCP (denoted as \mathcal{N}) being the mean over the ray-paths that pierce the filament (only M rays out of 64)¹

$$\mathcal{N} = \frac{1}{M} \sum_m^M N_m = \frac{1}{M} \sum_m^M \int V_m(\lambda) d\lambda \quad (17)$$

Figure 2 (top panel) shows examples (dashed lines) of the individual 64 Stokes V_m profiles generated by each of the ray paths when looking at a penumbral filament located along the line-of-symmetry in the limbward-side of the penumbra ($\Psi = \pi$) of a sunspot located at an heliocentric angle of $\Theta = 45^\circ$. Only half of the ray-paths actually pierce the filament and produce a non-vanishing NCP (M out of 64). In color we also plot the averaged Stokes V profiles. The lower panel of Fig. 2 shows an example of the NCP generated by individual ray-paths (N_m) in the two considered spectral lines, at a heliocentric angle of $\Theta = 45^\circ$, and at two different azimuthal angles: $\Psi = 0$ (center side penumbra) and $\Psi = \pi$ (the limb-ward side of the penumbra). This example was obtained using the following model parameters: $B_0 = B_{f0} = 1000$ G, $V_e = 6$ km s^{-1} , $V_c = 1$ km s^{-1} , $\gamma_0 = 60^\circ$ and $R = 75$ km.

¹ By averaging only over the lines-of-sight that pierce the filament we are ensuring that the filling factor of the filament is always one or, in other words, that our resolution element is fully occupied by the filament irrespective of Θ and Ψ . Failing to do this would allow us to arbitrarily change the filling factor at each azimuthal position to create more or less net circular polarization. Note that the same results would be obtained if we assume that there are several filaments lying next to each other within the resolution elements as long as it is fully filled with filaments and they are located at the same height.

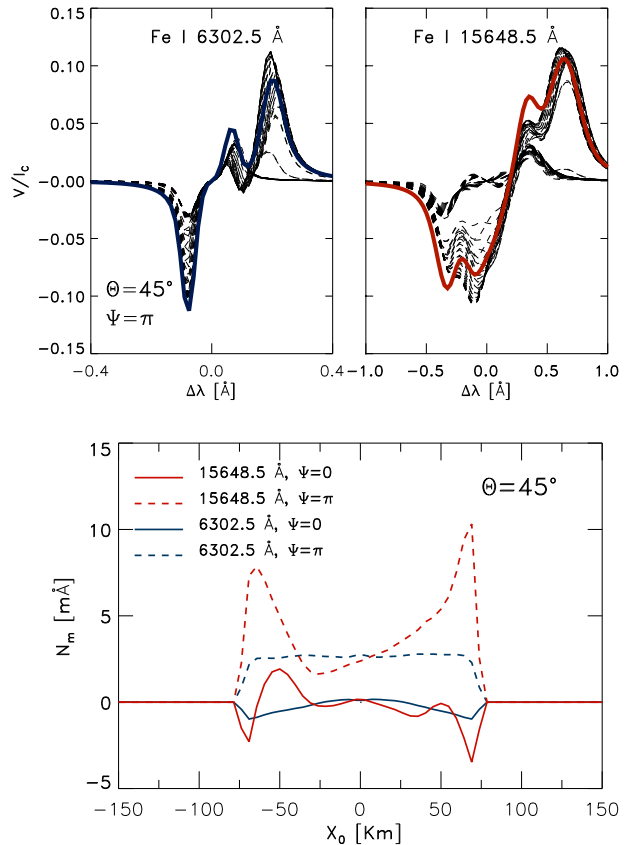


FIG. 2.— *Top panel:* individual Stokes V_m profiles (black dashed lines) generated by each of the ray-paths for $\Theta = 45^\circ$ and $\Psi = \pi$. The averaged profile (over all 64 individual rays) is also showed in color. *Bottom panel:* net circular polarization generated by different ray-paths, N_m , piercing the filament at different points. Solid lines correspond to the center side penumbra on the line of symmetry of the sunspot ($\Psi = 0$), while dashed lines correspond to the limb side penumbra also over the line of symmetry ($\Psi = \pi$). Blue lines correspond to the Fe I line at 6302.5 Å and red lines are for Fe I 15648.5 Å. Model parameters are the same as in Figure 1: $B_0 = B_{f0} = 1000$ G, $R = 75$ Km, $\gamma_0 = 60^\circ$. In addition, we have employed: $V_e = 6$ km s^{-1} , $V_c = 1$ km s^{-1} .

We have repeated the same calculations for 25 different azimuthal positions between $\Psi = 0, 2\pi$ and at 4 heliocentric angles: $\Theta = 15, 30, 45, 60^\circ$. Results are presented in Figure 3 (top panel for Fe I 6302.5 Å and bottom panel for Fe I 15648.5 Å). Example of theoretical and observed $\mathcal{N}(\Psi)$ -curves are overplotted in Figure 4 for two cases: ASP (Advanced Stokes Polarimeter; Elmore et al. 1992) observations of Fe I 6302.5 Å at $\Theta = 38^\circ$ (AR 8545; May 21, 1999) and TIP (Tenerife Infrared Polarimeter; Martínez Pillet et al. 1999) observations of Fe I 15648.5 Å at $\Theta = 60^\circ$ (AR 8706, September 21, 1999). Figure 4 clearly demonstrates that the total amount of NCP and its sign are well reproduced as a function of the azimuthal position at the displayed heliocentric angles. It is particularly gratifying to see the model reproducing the multi-peak shape of the NCP curve of Fe I 15648.5 Å. The theoretical $\mathcal{N}(\Psi)$ curves compare satisfactorily with the observed ones also at other heliocentric angles for these

two spectral lines (compare Fig. 3 with Figs. 3-4 of paper II).

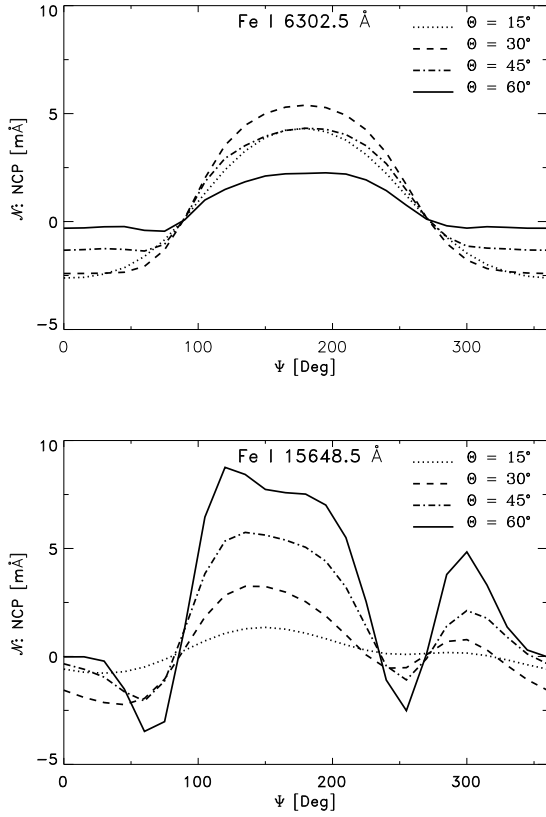


FIG. 3.— Predicted azimuthal variation of the net circular polarization, $\mathcal{N}(\Psi)$, for two different neutral iron atomic lines: 6302.5 Å (top) and 15648.5 Å (bottom) for sunspots located at different heliocentric angles. They have been obtained using the model for penumbral filaments described in this paper, which includes both the Evershed flow and convective motions inside the filament. The model parameters used are the same as in Figure 2: $B_0 = B_{f0} = 1000$ G, $R = 75$ Km, $\gamma_0 = 60^\circ$, $V_e = 6$ km s $^{-1}$, $V_c = 1$ km s $^{-1}$.

It is important to mention here that the observed NCP curves have been obtained mainly for points located in the middle penumbra. It may seem that the model parameters: $B_0 = B_{f0} = 1000$ G and $\gamma_0 = 60^\circ$ chosen to reproduce them are more typical of the outer penumbra. This is not the case since these model parameters refer to locations far away from the flux-tube. In fact, in the vicinity of the flux-tube the field strength and inclination of the external magnetic field reaches values closer to 1500 G and 45° respectively (see for example Fig. 1 in paper I), which is more representative of the mid-penumbra.

4. EFFECT OF A CONVECTIVE FLOW ON THE NCP

As demonstrated in the previous section, the model for penumbral filaments employed here produces very similar $\mathcal{N}(\Psi)$ -curves as the round horizontal flux-tube model employed by Borrero et al. 2007 (see Figs. 3-4) to describe penumbral filaments. In order to understand the reason for this we need to investigate the similarities and differences between our current model for penumbral filaments and the model from paper II.

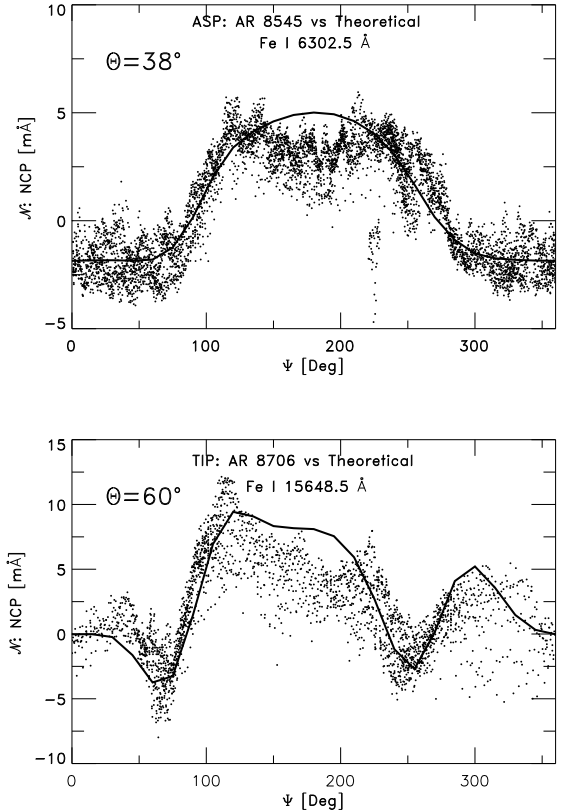


FIG. 4.— Same as Figure 3 but for and Fe I 6302.5 Å and $\Theta = 38^\circ$ (top panel) and Fe I 15648.5 Å and $\Theta = 60^\circ$ (bottom panel). Observations of $\mathcal{N}(\Psi)$ for two different sunspots observed at those heliocentric angles in these two spectral lines are displayed by the dots (same data as underlying Figs. 3-4 in paper II).

The magnetohydrostatic equilibrium for horizontal flux-tubes imposes large temperatures in the tube's lower half. This yields a $\tau = 1$ level that is always formed within the upper middle-half of the flux tube (see Fig. 2 in paper I), just as in our Fig. 1. Therefore, the lower half of the flux-tube does not significantly affect the emergent radiation, so that the main difference between the model employed in this work and the horizontal flux-tube model is the addition of the convective flow (Eqs. 3 through 8).

To investigate the effect that these convective motions have on the generated NCP, we have calculated the NCP produced by individual rays cutting through a penumbral filament (in the same way as in Figure 2) but switching off the Evershed effect: $V_e = 0$. An example is presented in Figure 5 for a filament located at disk center ($\Theta = 0^\circ$) and at the line-of-symmetry of the sunspot ($\Psi = 0^\circ$). We have carried out the experiment for two different convective velocities: $V_c = 1$ (solid lines) and 3 km s $^{-1}$ (dashed lines). Note that, in this particular example the results would have been the same even if a horizontal Evershed flow was present, $V_e \neq 0$ (Eq. 4), since it does not contribute to the LOS-velocity.

According to Figure 5, the amount of NCP does not exactly scale linearly with V_c . This is due to the fact that V_c does not necessarily represent the convective velocities seen in spectropolarimetric observations, but rather the strength of the convective upflow at the filament's center (see discussion in Section 2), which is partly hidden be-

low the $\tau = 1$ level (see Fig. 1). For $V_c = 1 \text{ km s}^{-1}$ the generated NCP is always smaller than $3 \text{ m}\text{\AA}$ (absolute value). The results for the Fe I 6302.5 \AA line show that, at the center of the filament (where the upflow is present) the NCP is negative, but it turns positive closer to the filament's edge (at the downflow lanes).

Hinode/SP (Ichimoto et al. 2008) has not so far provided a clear correlation between convective velocities and NCP in sunspots penumbrae close to disk center in the Fe I 6302.5 \AA line, probably due to the limited spatial resolution of the observations, which smears out the NCP variation across the filament. For Fe I 6302.5 \AA this makes the effect of the convective velocity field negligible, since the NCP generated by the upflow cancels out with the NCP generated by the downflowing lanes. Due to the $\Delta\phi$ -mechanism (Müller et al. 2002) Fe I 15648.5 \AA does not show such a correlation between upflows/downflows and NCP, however, we can see in Fig. 5 that the regions with positive net circular polarization are roughly equal to the regions with negative one. Therefore the spatially averaged NCP also tends to cancel out in this near-infrared spectral line. It is also worth noticing, in Figures 2 and 5, that the curves $N_m(x)$ are not symmetric even though the filament is located at disk center. The asymmetry is again due to the $\Delta\phi$ -mechanism which affects more the infrared lines (red curves) than the visible lines (blue curves).

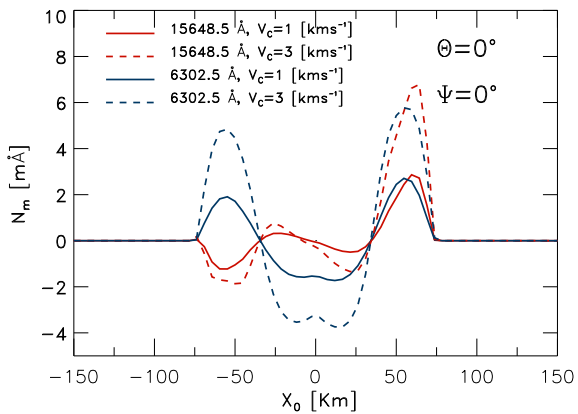


FIG. 5.— Net circular polarization produced by different ray-paths, N_m , cutting a penumbral filament at different x_0 's. This test was performed with the following model parameters: $B_0 = B_{f0} = 1000 \text{ G}$, $\gamma_0 = 60^\circ$, $R = 75 \text{ km}$, $V_e = 0 \text{ km s}^{-1}$, $\Theta = \Psi = 0^\circ$, $V_c = 1 \text{ km s}^{-1}$ (solid lines) or $V_c = 3 \text{ km s}^{-1}$ (dashed).

In Figure 6 we present different $\mathcal{N}(\Psi)$ -curves for sunspots located at different heliocentric angles. The first thing one realizes is that for $\Theta = 0^\circ$ a flat curve is obtained. This was to be expected because at disk center it does not matter where the filament is located within the sunspot (Eq. 15). In addition, the total NCP is very small ($|\mathcal{N}(\Psi)| < 1 \text{ m}\text{\AA}$). This is in agreement with our previous discussion, and is due to the fact that the upflow at the filament's center produces an NCP opposite in sign as the downflowing lanes at its edges, yielding very small values once we calculate the spatial average.

² Equations 13 and 14 show that neither the density nor gas pressure, and thus also not the temperature, depend on the x-coordinate.

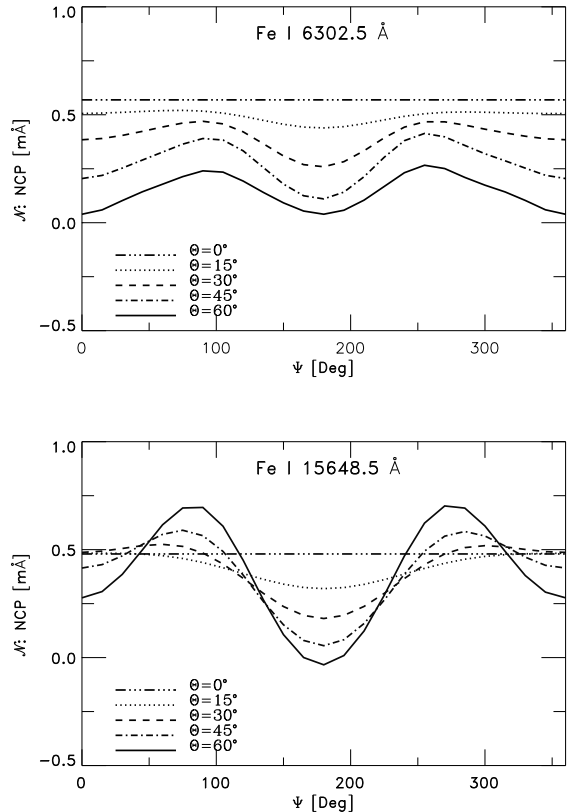


FIG. 6.— Azimuthal variation of the NCP $\mathcal{N}(\Psi)$ predicted at different heliocentric angles Θ , for a penumbral filament harboring no Evershed flow ($V_e = 0$) and a convective flow $V_c = 3 \text{ km s}^{-1}$. The rest of the model parameters are the same as in Fig. 4: $B_0 = B_{f0} = 1000 \text{ G}$, $\gamma_0 = 60^\circ$, $R = 75 \text{ km}$. Top panel shows the NCP calculated for Fe I 6302.5 \AA and the bottom panel for Fe I 15648.5 \AA .

The NCP decreases towards the limb along the line-of-symmetry of the spot ($\Psi = 0, \pi$). This is because the projection of the convective velocity field along the observer's line-of-sight decreases, and therefore we expect the NCP at this azimuthal position to decrease with increasing Θ . Note that this is not necessarily the case for regions perpendicular to the line-of-symmetry ($\Psi = \pi/2, 3\pi/2$) since the overturning upflow would become aligned with the observer. Indeed we observe that, for Fe I 6302.5 \AA (Fig. 6; top panel), at $\Psi = \pi$ and $\Psi = 3\pi/2$ the NCP decreases by a smaller amount with Θ than at $\Psi = 0, \pi$. In the case of Fe I 15648.5 \AA (Fig. 6; bottom panel), the additional contribution of the $\Delta\phi$ -mechanism produces an increase in the NCP, perpendicular to the line-of-symmetry, as Θ increases.

We stress that in these experiments we neglected the contribution of the Evershed flow ($V_e = 0$). If we had included it, its effect would have become larger with increasing Θ , making the effect of V_c even more negligible by comparison. Consequently the NCP generated by convective velocities inside penumbral filaments is easily masked by the lack of spatial resolution, projection effects, and the additional effect of the Evershed flow.

Finally it is important to bear in mind that the model presented here does not transport any net energy since the

temperature in the downflowing lanes is the same as in the central upflow². To test what would happen in a more realistic situation where real convection would be present we have repeated our experiments in this section (Figs. 5 and 6) but artificially increasing the temperature in the upflowing lane according to:

$$\Delta T(x, z) = \Delta T_0 \left(1 - \frac{z}{\sqrt{R^2 - x^2}} \right) \text{ if } \begin{cases} V_z(x, z) < 0 \\ \sqrt{x^2 + z^2} < R \end{cases} \quad (18)$$

where $\Delta T_0 = 3000$ K. This value for ΔT_0 has been chosen such that upflows provides sufficient energy to explain a penumbral brightness that is about 70 % of the quiet Sun. Note that Equation 18 only applies to upflows inside the filament: $V_z < 0$ and $r = \sqrt{x^2 + z^2} < R$. Equation 18 shows that the temperature difference vanishes at the filament's edge, where convective-like motions are no longer present. Under this new configuration, the results show that the actual shape for the NCP-curve (Figs. 5-6) in Fe I 6302.5 Å does not change, whereas for Fe I 15648.5 Å does. On the one hand, these changes are at the level of ~ 1 mÅ, which supports our previous claim that the thermodynamic structure plays only a secondary role in the generation of NCP. On the other hand, after modifying the temperature in the upflow, density and gas pressure have not been modified in a way that is consistent with the equilibrium of the filament (Eq. 13-14), therefore these claims need further investigation with a model that allows for these differences self-consistently.

5. EFFECT OF THE FILAMENT'S MAGNETIC FIELD STRENGTH ON THE NCP

Another model with distinct similarities to the structure we have studied here is the *gappy penumbral model* (Spruit & Scharmer 2006; Scharmer & Spruit 2006), which postulates that the penumbral filaments are formed by field-free gaps that penetrate the penumbral magnetic field from below. Inside such field-free gaps overturning convective motions occur. This is an advantage, as compared to horizontal flux-tube models (Solanki & Montavon 1993), since convective motions are able to carry enough energy to heat the penumbra, which in turn could explain its enhanced brightness relative to the umbra (cf. Schlichenmaier & Solanki 2003; Ruiz Cobo & Bellot Rubio 2008). In the context of the gappy penumbral model, the Evershed flow would be produced by the deflection of these convective motions along the inclined field lines above the gap (Scharmer et al. 2008b), although it has not yet been shown that in this model the Evershed flow would be restricted to material threaded by a magnetic field (Solanki et al. 1994).

In the previous examples (Sects. 3 and 4) we have assumed that the magnetic field inside the penumbral filament is as strong as the external field far away from the filament ($B_{f0} = B_0 = 1000$ G). However, our model for penumbral filaments would present a very similar configuration, both in the magnetic field and the velocity field, to the gappy penumbral model if we set the field strength inside the filament to zero: $B_{f0} = 0$. Very recently, however, Scharmer (2008) has acknowledged the possibility of a non-zero (although strongly reduced) magnetic field inside the *field-free gap* (cf. Brummell et al. 2008; Rempel et al. 2009).

The azimuthal variation of the NCP, $\mathcal{N}(\Psi)$, for a penumbral filament observed away from disk center for various field strengths inside the filament is presented in Fig. 7 for Fe I 6302.5 (top panel, for $\Theta = 38^\circ$) and Fe I 15648.5 Å (bottom panel, for $\Theta = 60^\circ$). The case of $B_{f0} = 1000$ G is indicated by solid lines in this figure, which are identical to the solid lines in Fig. 4, which reproduce very well the observations. However, when the field strength inside the filament drops below 1000 G the discrepancy between theoretical and observed curves becomes clear. Similar discrepancies appear also at other heliocentric angles.

In particular, for $B_{f0} < 500$ G, the NCP produced by an almost field-free filament is always negative at all azimuthal angles in both spectral lines, and therefore does not reproduce the correct sign of the NCP. In addition, the multi-peak structure observed in Fe I 15648.5 Å disappears completely for $B_{f0} < 500$ G, which is contrary to observations. These computations imply a value of B_{f0} not much below 1000 G, which in agreement with the findings of Borrero & Solanki (2008) who found that in the outer penumbra, the magnetic field inside penumbral filaments is not weaker than in the external field.

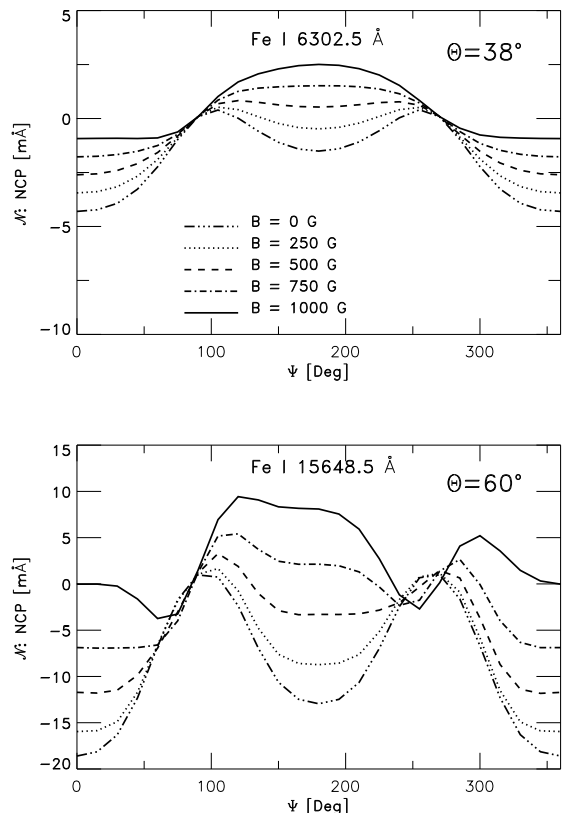


FIG. 7.— Azimuthal variation of the NCP $\mathcal{N}(\Psi)$ predicted at $\Theta = 38^\circ$ for Fe I 6302.5 Å (top panel), and at $\Theta = 60^\circ$ for Fe I 15648.5 Å (bottom panel). Note that solid lines ($B_{f0} = 1000$ G) are the same as in Figure 4. This case corresponds to a strong magnetic field inside the filament, and is able to reproduce the observations satisfactorily. The other curves refer to different values of B_{f0} , as marked in the upper panel. The model parameters employed here are: $B_0 = 1000$ G, $R = 75$ Km, $\gamma_0 = 60^\circ$, $V_e = 6$ km s⁻¹, $V_c = 1$ km s⁻¹.

6. EFFECT OF OTHER MODEL PARAMETERS

In order to investigate whether our results are effected by our particular choice of model parameters we have studied the effect of these parameters on the $\mathcal{N}(\Psi)$ curves. For example, the effect of the inclination of the external field. The idea behind this is that a smaller γ_0 increases the gradient in the inclination along the line-of-sight, so that a larger NCP should be generated through the $\Delta\gamma$ -mechanism (Sánchez Almeida & Lites 1992). Using $\gamma_0 = 45^\circ$ indeed increases the amount of NCP (for Fe I 6305.5 Å only), however it did not have any significant impact on the overall shape of the $\mathcal{N}(\Psi)$ curves.

We have also employed other models for the external atmosphere. Instead of the hot umbral model from Collados et al. (1994) we adopted the mean penumbral model by del Toro Iniesta et al. (1994), which is about 1200 K hotter than the former at $\tau_5 = 1$ and possesses a steeper gradient in temperature. Again, no significant differences were observed, supporting our earlier statement (Sect. 2) that the thermodynamic details play only a minor role. Of course, if the thermodynamics change dramatically noticeable differences do appear. For example, using the cool (instead of hot) umbral model from Collados et al. (1994) has the effect of yielding very small, $|\mathcal{N}(\Psi)| < 1$ mÅ, values for the net circular polarization in Fe I 6302.5 Å, in clear disagreement with observations. This happens because this umbral model is very cold and therefore the lower level of the atomic transition depopulates, which produces spectral lines that are far from their saturation point, becoming less sensitive to the gradients along the line-of-sight (Grossmann-Doerth et al. 1989; Borrero et al. 2004).

We have also studied the effects of other possible convective velocity fields. For example, consider:

$$\mathbf{V}_f(r, \theta) = V_e \mathbf{e}_y + V_c \left\{ 1 - \frac{r}{R} \right\} \mathbf{e}_r - V_c \cos \theta \mathbf{e}_\theta \quad (19)$$

This velocity field produces a very similar convective pattern as the one described in Eqs. 3-8 (see also Fig. 1), but it does not satisfy mass conservation inside the penumbral filament. In spite of this, we have repeated most of the calculations presented in this paper using this velocity field and found that it produces essentially the same results as the more realistic flow that conserves mass.

Another parameters that affects the NCP-curves is the percentage of the resolution element that is assumed to be occupied by the penumbral filament (filling factor; see footnote in Section 3). A smaller filling factor will scale the $\mathcal{N}(\Psi)$ -curves proportionally. However, on the one hand the model parameters we have chosen are meant to model the conditions in the middle-penumbra, where the filling factor of the filament is seen to peak (see Bellot Rubio et al. 2004, Borrero et al. 2005). On the other hand a decrease of a 25 % in the filling factor can be compensated by an similar increase in the magnitude of the Evershed flow V_e or a decrease in the inclination of the external field γ_0 (that increases in the gradient in the inclination of the magnetic field as the line-of-sight passes from the external atmosphere to the inside of the filament).

7. CONCLUSIONS

We have developed a magnetohydrostatic model of a penumbral filament embedded in a surrounding potential field. The MHS equilibrium imposes a density, pressure and temperature structure inside the penumbral filaments such that the $\tau = 1$ -level is formed inside the filament. Consequently, we do not need to specify its sub-surface structure, which could be in the form of a flux-tube (filament with circular cross section) or in the form of a vertically elongated plume. Inside the filament we assume the presence of the Evershed flow along its axis and of a convective velocity field perpendicular to it. The filament's magnetic field is imposed to be homogeneous in its interior.

By means of Stokes radiative transfer calculations, we have shown that this model is able to reproduce the observed azimuthal variation of the net circular polarization $\mathcal{N}(\Psi)$, observed at different heliocentric angles for two different (visible and near-infrared) Fe I lines.

We have also studied the effect of the convective velocity field on the generated $\mathcal{N}(\Psi)$ -curves. We have found that its effect is much smaller than the NCP generated by the Evershed flow. In addition, the NCP generated by the convective downflows ($\mathcal{N} > 0$) partly cancels with the NCP generated by the upflow at the filament's center ($\mathcal{N} < 0$).

Finally, we have employed our model to study the NCP generated by field-free gaps (Spruit & Scharmer 2006) and have found that this model does not reproduce satisfactorily the observed NCP. For that to happen, the magnetic field inside the filament should be around 1000 G, which is not compatible with the concept of a field-free gap.

Our results do not, by themselves, rule out the field-free gap model, since the model employed here is still rather simple, although it does account for the main features of the penumbral fine structure. A more elaborate model based on field-free gaps could still yield NCP curves closer to the observed ones.

In summary, our investigation confirms that the net circular polarization is produced mainly by the Evershed flow in filaments filled with a rather strong horizontal field, and embedded in an inclined magnetic field, as originally proposed by Solanki & Montavon (1993) and worked out in greater detail by Martínez Pillet (2000), Müller et al. (2002), Schlichenmaier et al. (2002), Borrero et al. (2007) and others.

More elaborate models are already available thanks to recent 3D MHD simulations (Schüssler & Vögler 2006, Heinemann et al. 2007, Rempel et al. 2008, 2009). These simulations, reveal a complex picture that shares similarities and differences with both the flux-tube and the gappy penumbral model (see Borrero 2009, Schlichenmaier 2009). In a next step it is important to introduce non-grey radiative energy transfer into such simulations, so that similar analyses as carried out here can be performed.

This work was partly supported by the WCU grant No. R31-10016 from the Korean Ministry of Education, Science and Technology

DETERMINATION OF THE FILAMENT'S CONVECTIVE FLOW THROUGH MASS CONSERVATION

In this section we derive a velocity field inside penumbral filaments that conforms with mass conservation for a prescribed density and gas pressure stratification inside the filament. Gas pressure and density have been obtained under hydrostatic equilibrium in Section 2 of this paper and are given by Eqs. 13 and 14, respectively. In addition, in order to satisfy the boundary conditions at the filament's boundary (Eqs. 9-10) the radial and angular component of the velocity field must vanish at the filament's boundary: $V_{fr}^* = V_{f\theta}^* = 0$. The final requirement is that the velocity flow must be convective, that is, with an upflow at the filament's center and downflowing lanes at its edges.

We start by writing down the condition: $\nabla(\rho_f \mathbf{V}_f) = 0$ in polar coordinates. Unless otherwise specified we will always refer to the filament and therefore the subindex 'f' is implied throughout this section.

$$V_r \frac{\partial \rho}{\partial r} + \frac{V_\theta}{r} \frac{\partial \rho}{\partial \theta} + \frac{\rho}{r} \left\{ \frac{\partial(rV_r)}{\partial r} + \frac{\partial V_\theta}{\partial \theta} \right\} = 0. \quad (\text{A1})$$

We now rewrite A1 as:

$$\frac{\partial V_\theta}{\partial \theta} + q(r, \theta) V_\theta = m(r, \theta), \quad (\text{A2})$$

where $q(r, \theta)$ and $m(r, \theta)$ are:

$$q(r, \theta) = \frac{1}{\rho} \frac{\partial \rho}{\partial \theta}, \quad (\text{A3})$$

$$m(r, \theta) = - \left\{ \frac{\partial(rV_r)}{\partial r} + \frac{rV_r}{\rho} \frac{\partial \rho}{\partial r} \right\}. \quad (\text{A4})$$

Equation A2 is a first order linear partial differential equation that can be solved with the help of an integrating factor $i(r, \theta)$, given by:

$$i(r, \theta) = \exp \left\{ \int q(r, \theta) d\theta \right\} = \exp \left\{ \int \frac{1}{\rho} \frac{\partial \rho}{\partial \theta} d\theta \right\} = \rho(r, \theta), \quad (\text{A5})$$

Equation A5 shows that the integrating factor is indeed the density. Multiplying the left and right hand sides of Eq. A2 by the density, yields the solution for V_θ as:

$$V_\theta(r, \theta) = \frac{1}{\rho(r, \theta)} \left\{ \int \rho(r, \theta) m(r, \theta) d\theta + C(r) \right\} = \frac{1}{\rho(r, \theta)} \left\{ - \int \frac{\partial(r\rho V_r)}{\partial r} d\theta + C(r) \right\} \quad (\text{A6})$$

where $C(r)$ is an integration constant that can depend of the radial coordinate. For simplicity we will now make the further assumption that V_r depends only on the radial distance from the filament's center: $V_{fr}(r)$. With this, we can simplify Eq. A6 to:

$$V_\theta(r, \theta) = \frac{-1}{\rho(r, \theta)} \left\{ rV_r \int \frac{\partial \rho}{\partial r} d\theta + \frac{\partial(rV_r)}{\partial r} \int \rho d\theta - C(r) \right\}. \quad (\text{A7})$$

Now, according to Eq. 14 in Section 2 of the paper, the filament's density is given by:

$$\rho_f(r, \theta) = \rho_s(z) + r\delta \sin \theta, \quad (\text{A8})$$

where we have only substituted $z = r \sin \theta$ and $\delta = \frac{B_0^2 \cos^2 \gamma_0}{\pi g R^2}$ (Eq. 8). Now, the density stratification of the external atmosphere $\rho_s(z)$ can be written in terms of the density at $z = 0$: ρ_0 and its density scale-height H_s :

$$\rho_s(z) = \rho_0 e^{-z/H_s} = \rho_0 e^{-r \sin \theta / H_s} = \rho_s(r, \theta) \quad (\text{A9})$$

In general, the density scale-height varies with height, however, over the range of heights we are interested in: $z \in [0, R]$, H_s can be considered to be constant. When substituting Eq. A9 into A8 and then into A7 we are left with two integrals that can be solved analitically, in terms of the hypergeometric function ${}_2F_1(1/2; (1-k)/2; 3/2; \cos^2 \theta)$, but only if we perform a Taylor expansion of the density in the surrounding atmosphere $\rho_s(r, \theta)$.

$$\rho_s(r, \theta) = \rho_0 \left[1 + \sum_{k=1}^{\infty} \frac{(-1)^k r^k}{k! H_s^k} \sin^k \theta \right] = \rho_0 \left[1 - \frac{r}{H_s} \sin \theta + \frac{r^2}{2H_s^2} \sin^2 \theta + \mathcal{O}(\sin^3 \theta) \right] \quad (\text{A10})$$

Fortunately, for typical penumbral conditions we have that $R\delta > \rho_0$. In this case the term $r\delta \sin \theta$ in Equation A8 is the main contributor to the filament's density $\rho_f(z)$, which in turn means that we can truncate the Taylor expansion of

$\rho_s(z)$ (Eq. A10) to include only the first two terms. In this way we can avoid dealing with hypergeometric functions and transform the integrals inside Eq. A7 into:

$$\int \frac{\partial \rho_f(r, \theta)}{\partial r} d\theta \approx \int \left[\frac{-\rho_0 \sin \theta}{H_s} \left(1 - \frac{r \sin \theta}{H_s} \right) + \delta \sin \theta \right] d\theta = \alpha \cos \theta + \frac{r \rho_0}{2H_s^2} (\theta - \cos \theta \sin \theta) \quad (\text{A11})$$

$$\int \rho_f(r, \theta) d\theta \approx \int \left[\rho_0 - \rho_0 \frac{r \sin \theta}{H_s} + r \delta \sin \theta \right] d\theta = \rho_0 \theta + \alpha r \cos \theta \quad (\text{A12})$$

where α and δ had already been defined in Eqs. 7 and 8 in Section 2 of the paper. The integration constant $C(r)$ in Eq. A7 is determined by imposing that across the center of the filament the velocity field takes the form of an upflow: $V_{f\theta}(r, \pi/2) = 0$. Finally, substituting Eqs. A11 and A12 into A7 yields the final result for $V_{f\theta}(r, \theta)$ given by Eq. 6. Note that Equations 6 and A7 are completely general as long as the radial component of the velocity field depends only on r : $V_{fr}(r)$.

For the determination of $V_{fr}(r)$ we are free to choose any function that vanishes at the filament's boundary: $V_{fr}^* = 0$ such that there is total pressure balance between the filament and the surrounding atmosphere (Eq. 9). Our choice of $V_{fr}(r)$ will also affect the functional form of $V_{f\theta}(r, \theta)$ (through Eq. 6). According to the discussion in Section 2 we are looking for solutions that verify: $V_{f\theta}^* = 0$ such that the velocity term in Eq. 10 disappears. This is guaranteed if $V_{fr}^* = 0$ (which we are already looking for) but also $\partial V_{fr}^* / \partial r = 0$. Note that our choice of $V_{fr}(r)$ (Eq. 5) satisfies both conditions: both $V_{fr}(r)$ and its derivative vanish at the filament's boundary.

$$V_{fr}(r) = V_c \left\{ 1 - e^{-\beta(r-R)^2} \right\} \quad (\text{A13})$$

REFERENCES

- Bellot Rubio, L.R., Balthasar, H., Collados, M. 2004, *A&A*, 427, 319
 Bellot Rubio, L.R., Langhans, K. & Schlichenmaier, R. 2005, *A&A*, 443, L7
 Brummell, N.H., Tobias, S.N., Thomas, J.H. & Weiss, N. 2008, 686, 1454
 Borrero, J.M. 2007, *A&A*, 471, 967, paper I
 Borrero, J.M. 2009, in proc. International Workshop of 2008 Solar Total Eclipse: Solar Magnetism, Corona and Space Weather—Chinese Space Solar Telescope Science. Science in China. *in press*. DOI 10.1007/s11433-009-0247-2. arXiv: 0810.0080
 Borrero, J.M. & Solanki, S.K. 2008, *ApJ*, 687, 668
 Borrero, J.M., Solanki, S.K., Bellot Rubio, L.R., Lagg, A. & Mathew, S.K. 2004, *A&A*, 422, 1093
 Borrero, J.M., Lagg, A., Solanki, S.K. & Collados, M. 2005, *A&A*, 436, 333
 Borrero, J.M., Bellot Rubio, L.R. & Müller, D.A.N. 2007, *ApJ*, 666, L133, paper II
 Collados, M., Martínez Pillet, V., Ruiz Cobo, B., del Toro Iniesta, J.C. & Vázquez, M. 1994, *A&A*, 291, 622
 Danielson, R.E. 1961, *ApJ*, 134, 289
 Elmore, D.F., et al. 1992, *Proc. SPIE*, 1746, 22
 Grosser, H. 1989, *Astronomische Gesellschaft*, 3, 9
 Grossmann-Doerth, U., Schüssler, M. & Solanki, S.K. 1989, *A&A*, 221, 338
 Heinemann, T., Nordlund, Å, Scharmer, G.B. & Spruit, H.C. 2007, *ApJ*, 669, 1390
 Ichimoto, K., Suematsu, Y., Tsuneta, S., Katsukawa, Y., Shimizu, T., Shine, R. A., Tarbell, T. D., Title, A. M., Lites, B. W., Kubo, M. & Nagata, S. 2007, *Science*, 318, 1597
 Ichimoto, K., Tsuneta, S., Suematsu, Y., Katsukawa, Y., Shimizu, T., Lites, B.W., Kubo, M., Tarbell, T.D., Shine, R. A., Title, A. M. & Nagata, S. 2008, *A&A*, 481, L9
 Langhans, K. 2006, *ASP Conf. Series*, 358, 3. Eds: Roberto Casini & Bruce W. Lites.
 Márquez, I., Bonet, J.A., Sánchez Almeida, J. & Domínguez Cerdeña, I. 2006, *ASP Conf. Series*, 358, 96. Eds: Roberto Casini & Bruce W. Lites.
 Martínez Pillet, V. 2000, *A&A*, 361, 734
 Martínez Pillet, V. 2001, *A&A*, 369, 644
 Martínez Pillet, V., et al. 1999, *Astron. Gesellschaft Abstr. Ser.*, 15, 5
 Müller, D.A.N., Schlichenmaier, R., Steiner, O. & Stix, M. 2002, *A&A*, 393, 305
 Penn, M.J., Cao, W.D., Walton, S.R., Chapman, G.A. & Livingston, W. 2003, *ApJ*, 590, L119
 Rempel, M., Schüssler, M. & Knölker, M. 2009, *ApJ*, 691, 640
 Rempel, M., Schüssler, M., Cameron, R. & Knölker, K. 2009, *Science*, 325, 171
 Rimmele, T. 2008, *ApJ*, 672, 684
 Ruiz Cobo, B. & del Toro Iniesta 1992, *ApJ*, 398, 375
 Ruiz Cobo, B. & Bellot Rubio, L.R. 2008, *A&A*, 488, 749
 Sánchez Almeida, J. 1996, *ApJ*, 446, 537
 Sánchez Almeida, J. 2005, *ApJ*, 622, 1292
 Sánchez Almeida, J. 2006, *ASP Conf. Series*, 358, 13. Eds: Roberto Casini & Bruce W. Lites.
 Sánchez Almeida, J. & Lites, B.W. 1992, *ApJ*, 398, 359
 Sánchez Almeida, J., Márquez, I., Bonet, J.A. & Domínguez Cerdeña, I. 2007 *ApJ*, 658, 1357
 Scharmer, G.B. 2008, *Physica Scripta*, 133, 014015.
 Scharmer, G.B. & Spruit, H.C. 2006, *A&A*, 460, 605
 Scharmer, G.B., Narayan, G., Hillberg, T., de la Cruz Rodríguez, J., Löfdahl, M.G., Kiselman, D., Sütterlin, P., van Noort, M. & Lagg, A. 2008b, *ApJ*, 689, L69
 Scharmer, G.B., Nordlund, Å, Heinemann, T. 2008a, *ApJ*, 677, L149
 Schüssler, M. & Vögler, A. 2006, *ApJ*, 641, L73
 Solanki, S.K. 2003, *A&ARv*, 11, 153
 Solanki, S.K., & Montavon, C.A.P. 1993, *A&A*, 275, 283
 Solanki, S.K., Montavon, C.A.P. & Livingston, W. 1994, *A&A*, 283, 221
 Spruit, H.C. & Scharmer, G.B. 2006, *A&A*, 447, 343
 Schlichenmaier, R. 2009, *Space Science Reviews*, 144, 213
 Schlichenmaier, R. & Collados, M. 2002, *A&A*, 381, 668
 Schlichenmaier, R. & Solanki, S.K. 2003, *A&A*, 411, 257
 Schlichenmaier, R., Müller, D.A.N., Steiner, O. & Stix, M. 2002, *A&A*, 81, L77
 del Toro Iniesta, J.C., Tarbell, T.D. & Ruiz Cobo, B. 1994, *ApJ*, 436, 400
 del Toro Iniesta, J.C., Bellot Rubio, L.R. & Collados, M. 2001, *ApJ*, 549, L139
 Zakharov, V., Hirzberger, J., Riethmüller, T.L., Solanki, S.K., Kobel, P. 2008, *A&A*, 488, L17