

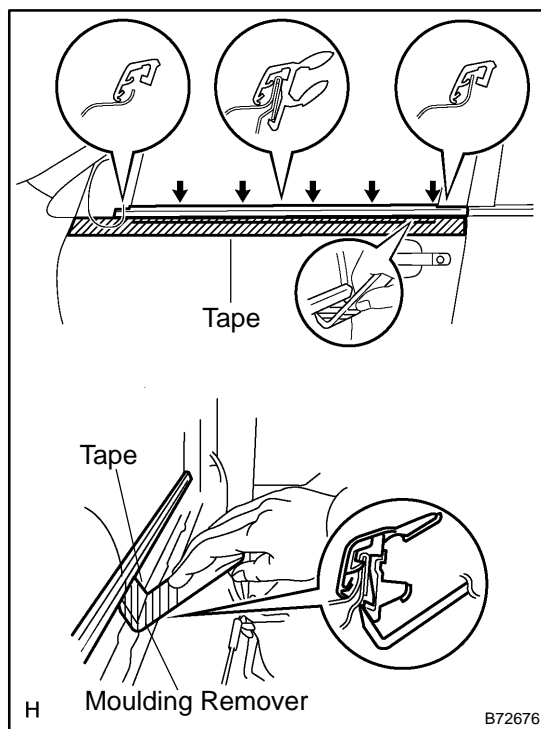
# FRONT DOOR BELT MOULDING ASSY LH

## REPLACEMENT

76018-02

### HINT:

- The installation procedures are the removal procedures in reverse order.
  - Use the same procedures for the RH side and LH side.
1. REMOVE FRONT ARMREST ASSY LH (See page 75-7)
  2. REMOVE POWER WINDOW REGULATOR MASTER SWITCH ASSY (W/ POWER WINDOW) (See page 75-7)
  3. REMOVE FRONT ARMREST BASE PANEL UPPER LH (W/O POWER WINDOW) (See page 75-7)
  4. REMOVE FRONT DOOR WINDOW REGULATOR HANDLE ASSY (W/O POWER WINDOW) (See page 75-7)
  5. REMOVE FRONT DOOR LOWER FRAME BRACKET GARNISH LH (See page 75-7)
  6. REMOVE FRONT DOOR TRIM BOARD SUB-ASSY LH (See page 75-7)



7. REMOVE FRONT DOOR BELT MOULDING ASSY LH
  - (a) Put protective tape under the weatherstrip.
  - (b) Using a moulding remover, pry out the weatherstrip as shown in the illustration.

### HINT:

Tape the moulding remover tip before use.