

DOOR CONTROL TRANSMITTER REGISTRATION

730B3-03

1. REGISTRATION OF RECOGNITION CODE

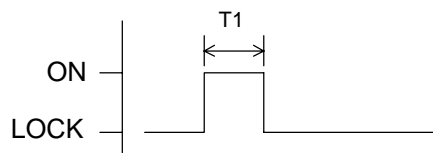
HINT:

- The add mode is used to retain the already registered codes while registering a new recognition code. This mode is used when adding a transmitter. If the number of the registered codes exceeds 4, the previously registered code will be correspondingly erased in order, starting from the first registered code.
 - The rewrite mode is used to erase all the previously registered codes and register only new recognition codes. This mode is used when exchanging the transmitter or the door control receiver for new one.
 - The prohibition mode is used to erase all the registered codes and cancel the wireless door lock function. Use this mode when the transmitter is lost.
 - The confirmation mode is to confirm how many recognition codes have already been registered before an additional registration of a recognition code.
 - All the following registration procedures must be performed in order continuously.
- (a) The vehicle should be in the following conditions.
- (1) The key is not inserted in the ignition key cylinder.
 - (2) Driver's door is OPENED. (The other doors are CLOSED)
 - (3) Driver's door is UNLOCKED.
- (b) Perform the following operations to select the desired mode.
- (1) Insert and remove the key from the ignition switch twice within 5 seconds.
 - (2) After the above operations, close and open the driver door twice within 40 seconds. Then insert the key into the ignition key cylinder and remove it.
 - (3) After the above operations, close and open the driver door twice within 40 seconds. Then insert the key into the ignition key cylinder and close the door.
 - (4) Turn the ignition switch from LOCK to ON and back to LOCK at approximately 1 second interval 1 to 5 times to select a mode (see the table below). Then remove the key from the ignition key cylinder.

Number of ON-LOCK operation of ignition switch:

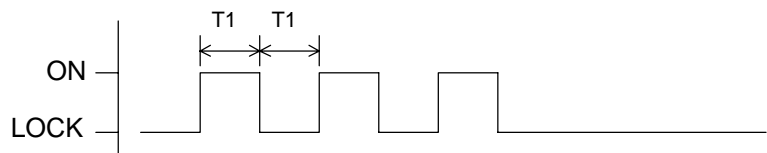
Add Mode

ON-LOCK operation: 1 time



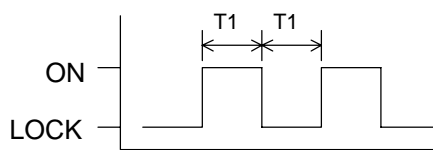
Confirmation Mode

ON-LOCK operation: 3 times



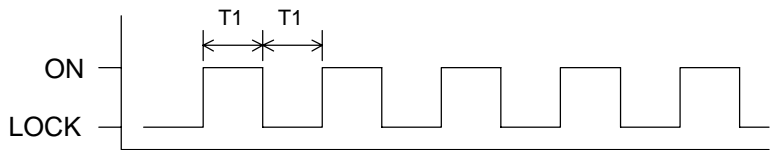
Rewrite Mode

ON-LOCK operation: 2 times



Prohibition Mode

ON-LOCK operation: 5 times



T1: Approx. 1 sec.

B58899

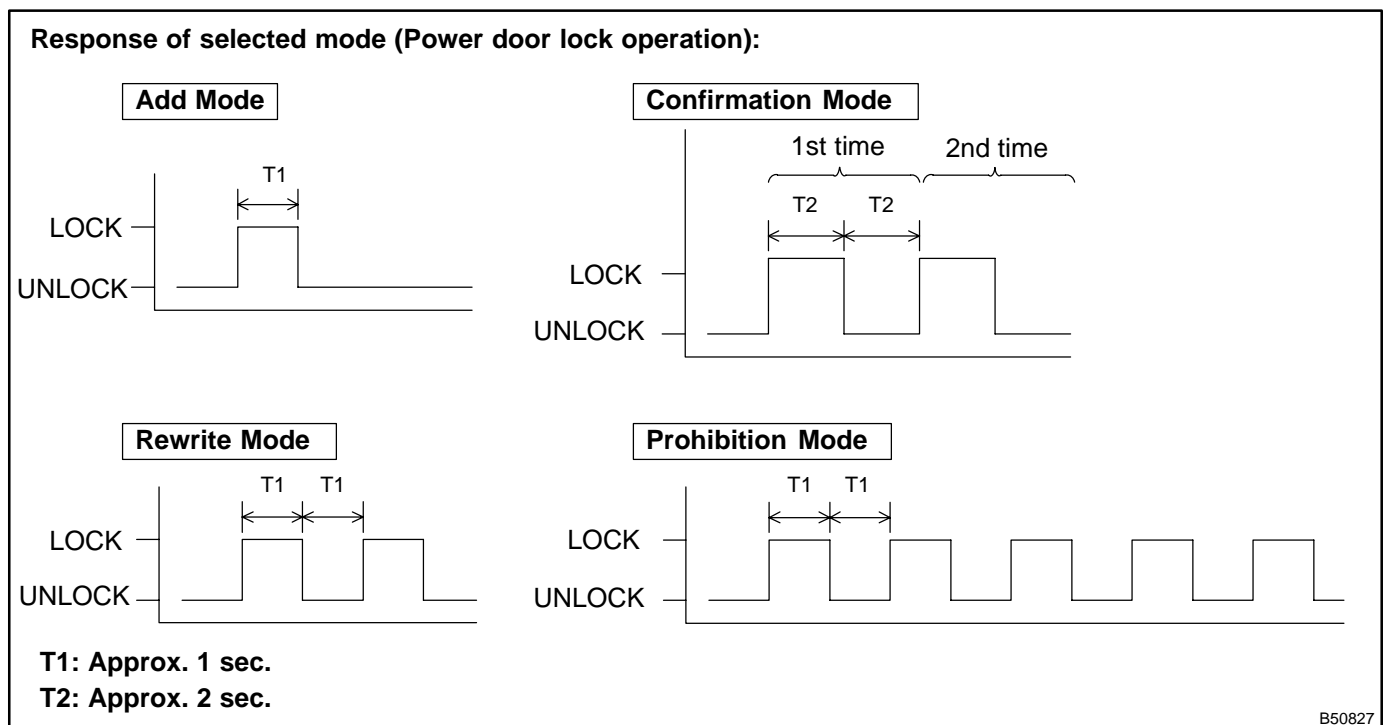
NOTICE:

If the number of the ON-LOCK operation of the ignition switch is 0, 4 or 6 or more, there will be no response (power door lock and unlock operation) to inform which mode has been selected.

- (5) After selecting a mode, the integration relay automatically performs the power door LOCK-UNLOCK operation within 3 seconds to inform the selected mode (see the table below).

HINT:

- In the confirmation mode, when the operation is performed twice, it directs that 2 types of recognition codes have been registered.
- In the confirmation mode, If the number of the registration code is 0, the LOCK-UNLOCK operation is automatically performed 5 times.
- If the prohibition mode or confirmation mode is selected, registration procedure is completed.

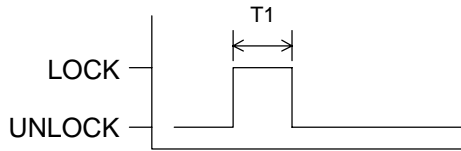


(c) Register the new recognition codes (Add mode or Rewrite mode):

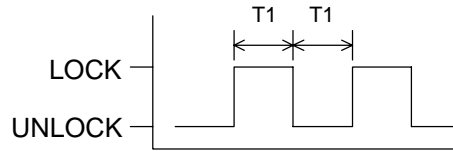
- (1) Within 40 seconds after the add mode or the rewrite mode has been selected, press the LOCK and UNLOCK switches on the transmitter switch simultaneously for 1.0 – 1.5 seconds. Within 3 seconds after the previous operation, press either one of the switches for more than 1.0 seconds.
- (2) Within 3 seconds after the transmitter switch has been turned OFF, the LOCK-UNLOCK operation will be automatically performed once if the registration of the recognition code of the transmitter is completed correctly. In case the LOCK-UNLOCK operation is performed twice, the registration of recognition code has failed. Perform the registration procedure from the beginning once again.

Response for registration completion:**LOCK-UNLOCK Occurs Once**

Registration of recognition code has been completed.

**LOCK-UNLOCK Occurs Twice**

Registration of recognition code has failed.



T1: Approx. 1 sec.

B58900

- (3) If the multiple transmitter to be registered, repeat step (c) within 40 seconds after the previous registration.

HINT:

- 4 types of recognition codes can be registered at one time.
- If even one of the following conditions is satisfied, the registration mode will finish.
 - 40 seconds have elapsed while an input of each mode is ready.
 - Any of the doors is opened
 - The key plate is inserted in the ignition key cylinder.
 - 4 types of recognition codes are registered at once.