

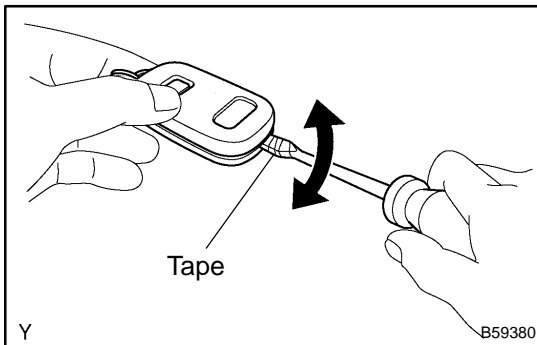
# TRANSMITTER BATTERY REPLACEMENT

730B2-01

## 1. REPLACE TRANSMITTER BATTERY

### NOTICE:

Special caution should be taken for handling each component as they are precision electronic components.



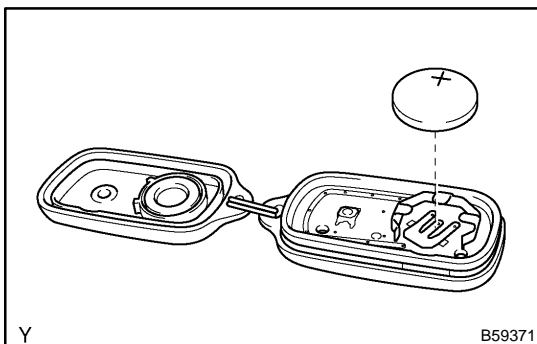
(a) Using a screwdriver, pry out the transmitter case.

### NOTICE:

**Do not forcibly pry out the case.**

### HINT:

Tape the screwdriver tip before use.



(b) Remove the battery (lithium battery).

### NOTICE:

- **Do not push the terminals with your finger.**
- **Prying up the battery (lithium battery) to forcibly remove it will cause deformation of the terminals.**
- **Do not touch the battery with wet hands. Water may cause unexpected rust.**
- **Do not touch or move any components inside the transmitter as it may interfere with proper operation.**

## 2. INSTALL TRANSMITTER BATTERY

(a) Install a new battery (lithium battery) with the positive (+) side up, as shown in the illustration.

### NOTICE:

- **Be sure that the positive side and the negative side of the transmitter battery are matched-up correctly.**
- **Be careful not to bend the electrode of the transmitter battery insertion.**
- **Be careful that dust or oil does not adhere to the transmitter case.**

(b) Install the case securely.