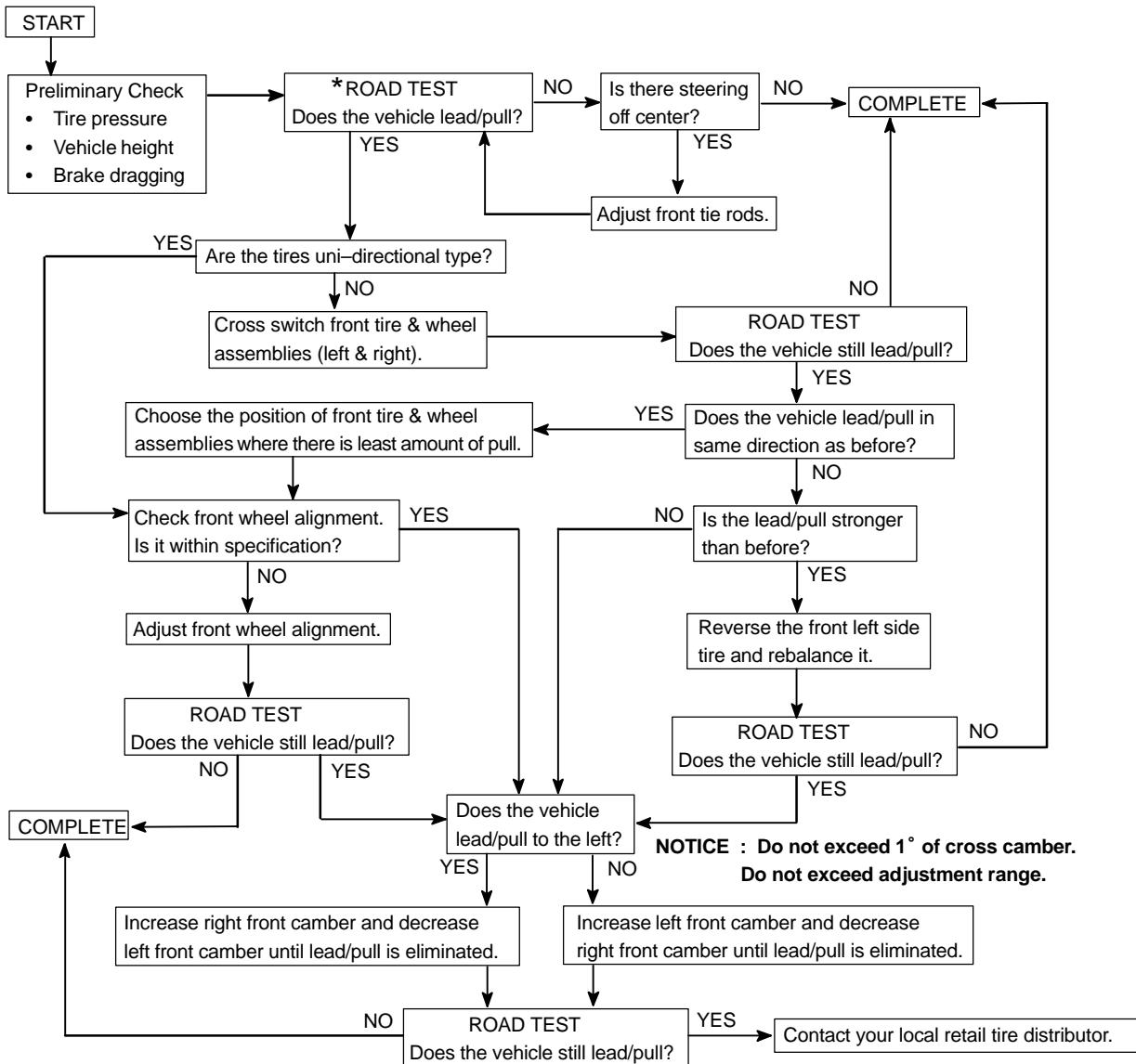


# REPAIR

## HINT:

This is a flow chart for vehicle pull.



Select a flat road where the vehicle can be driven in a straight line for 100 meters at a constant speed of 35mph. Please confirm safety and set the steering wheel to its straight position. Drive the vehicle in a straight line for 100 meters at a constant speed of 35 mph without holding the steering wheel.

(1) The vehicle can keep straight but the steering wheel has some angle. —→ STEERING OFF CENTER (See page 50-4)

(2) The vehicle cannot keep straight. —→ STEERING PULL